

# Port of Henry - Ozinga Update





# Port of Henry – Circa 2007



**OZINGA®**



# Port of Henry – 2007

City of Henry

Ozinga

**OZINGA®**



# Port of Henry – 2009

New Access Road,  
Berms & Maint. Shop

New Plant &  
Dredging Begins

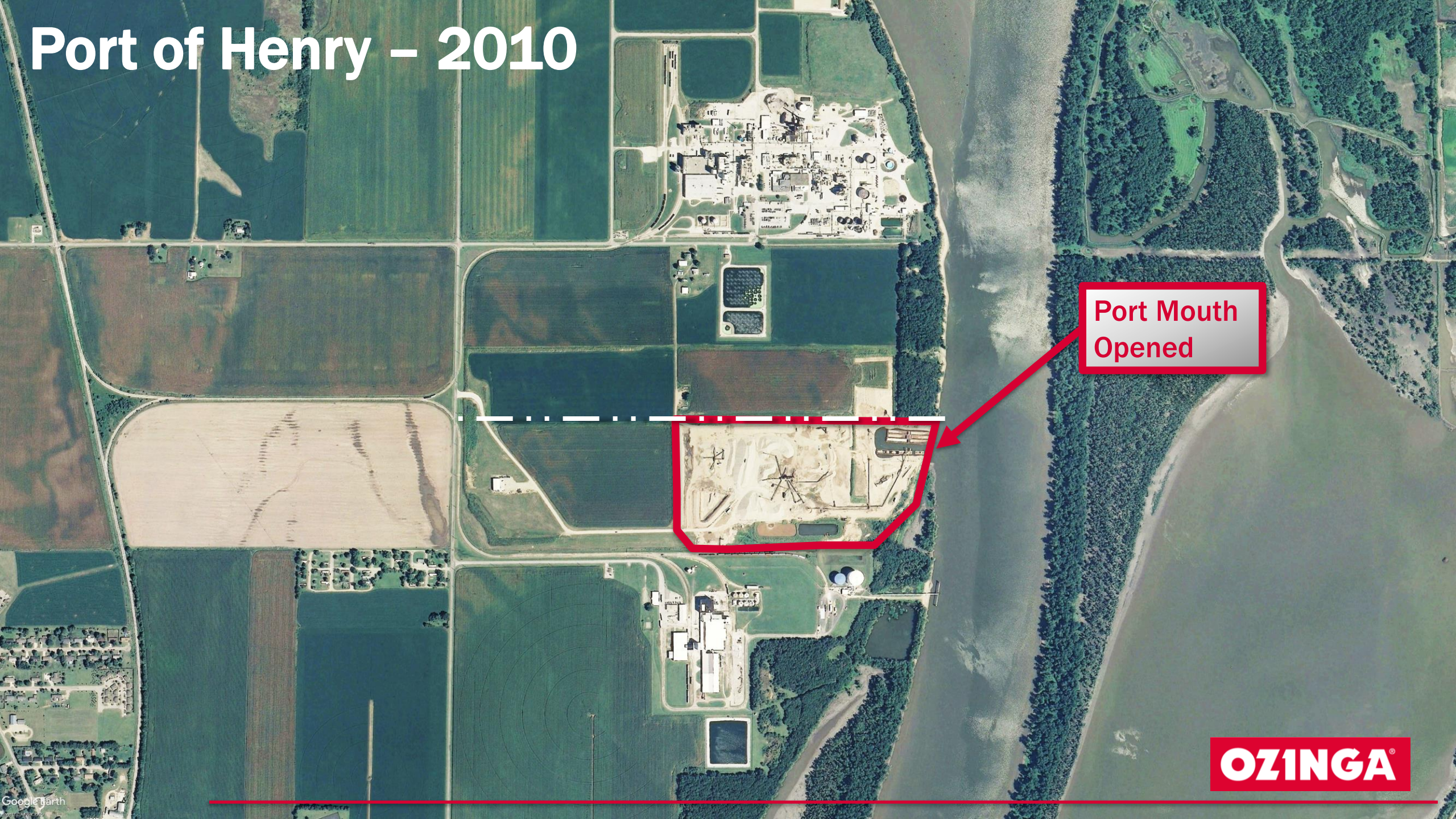
Port of Henry – 2009



# Port of Henry – 2010

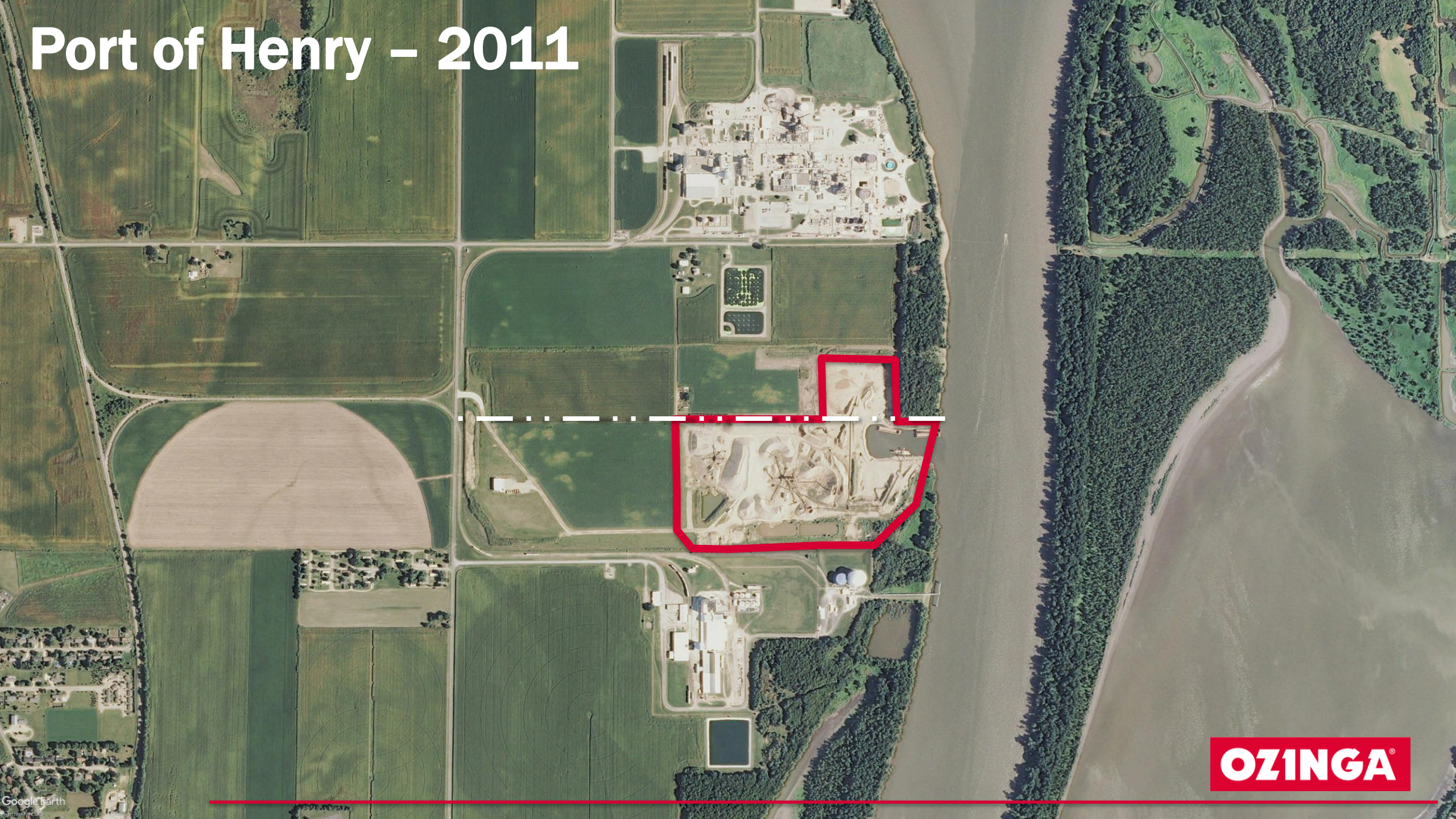
Port Mouth  
Opened

**OZINGA®**



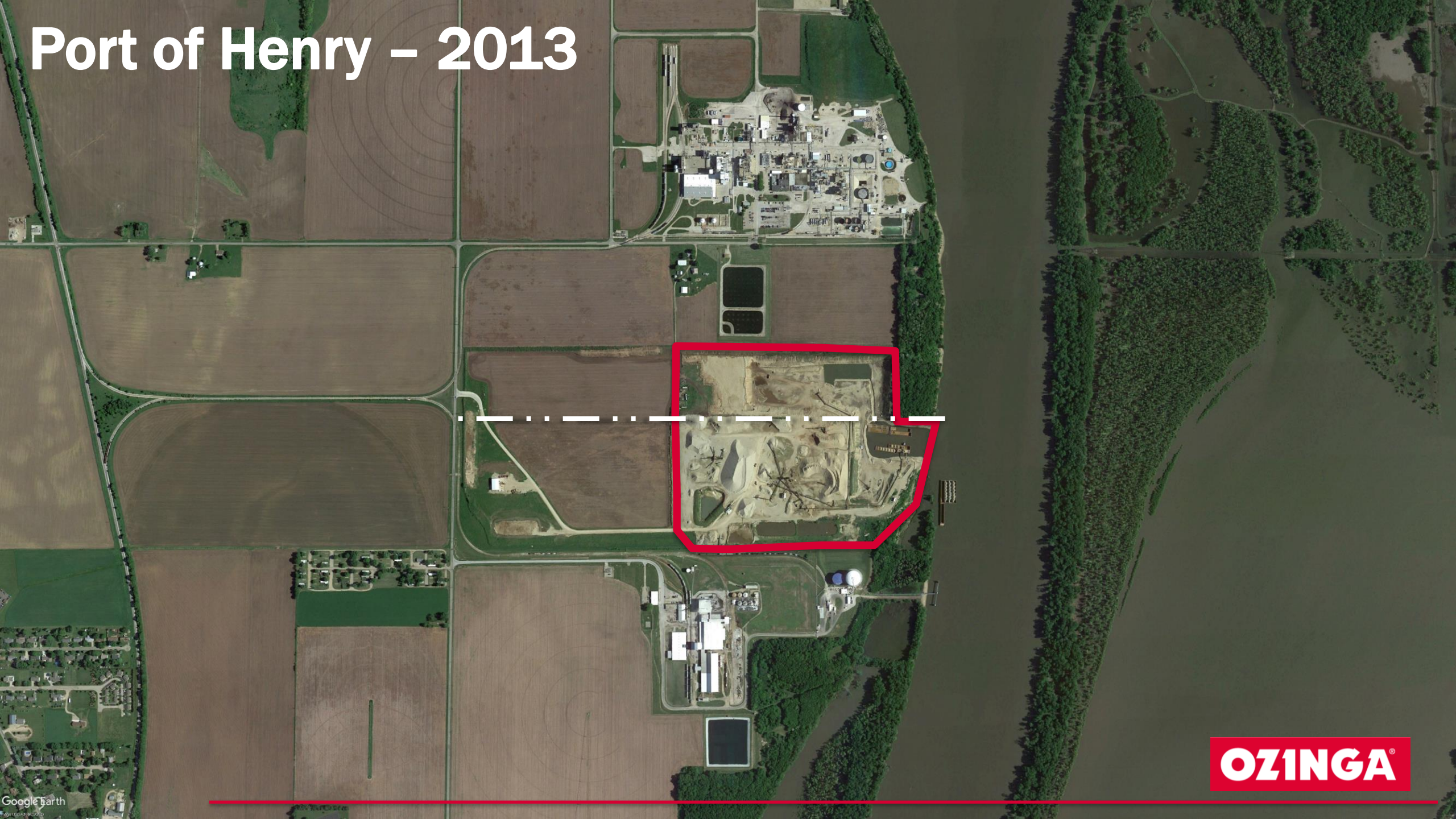


# Port of Henry – 2011



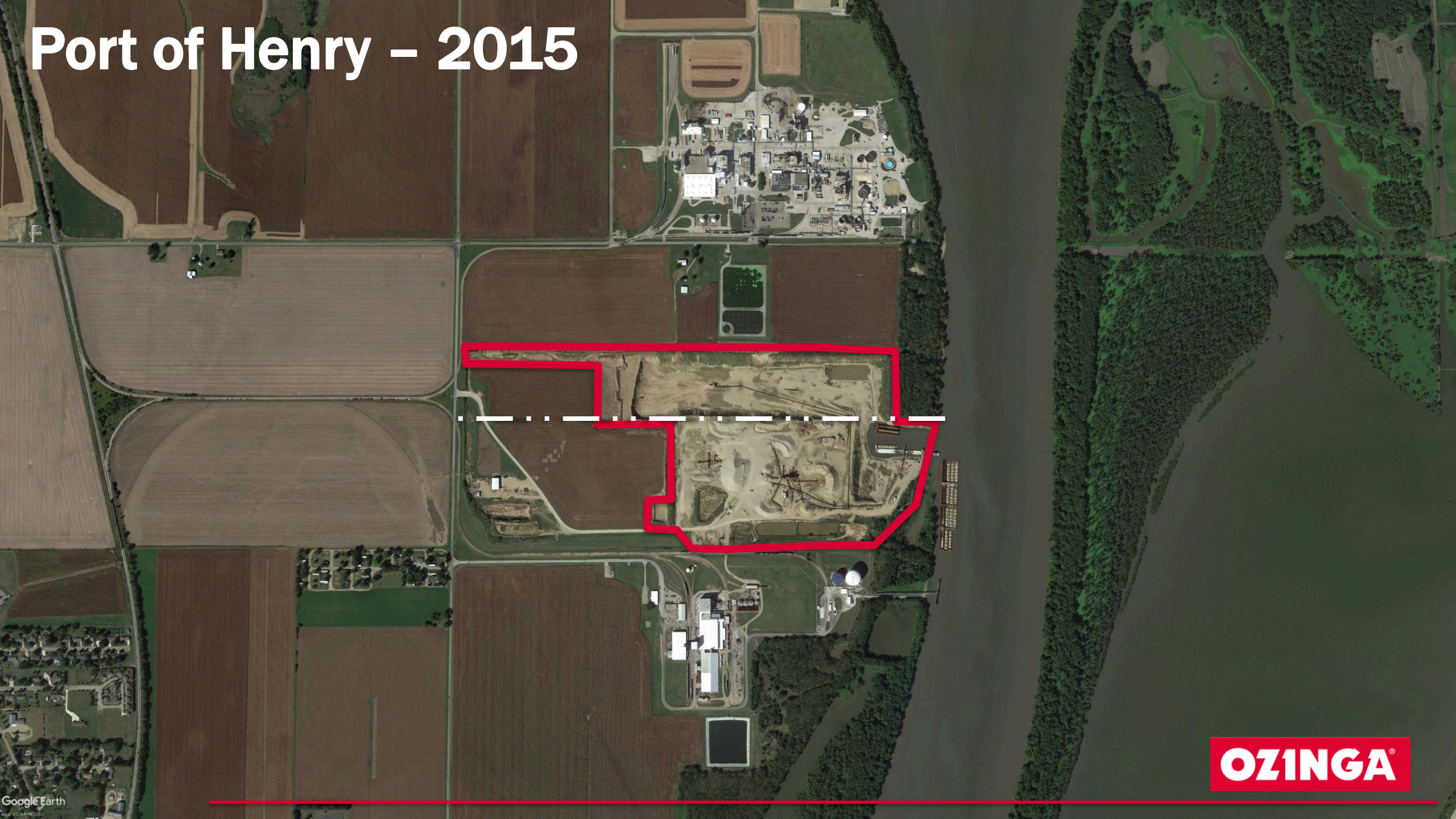


# Port of Henry – 2013



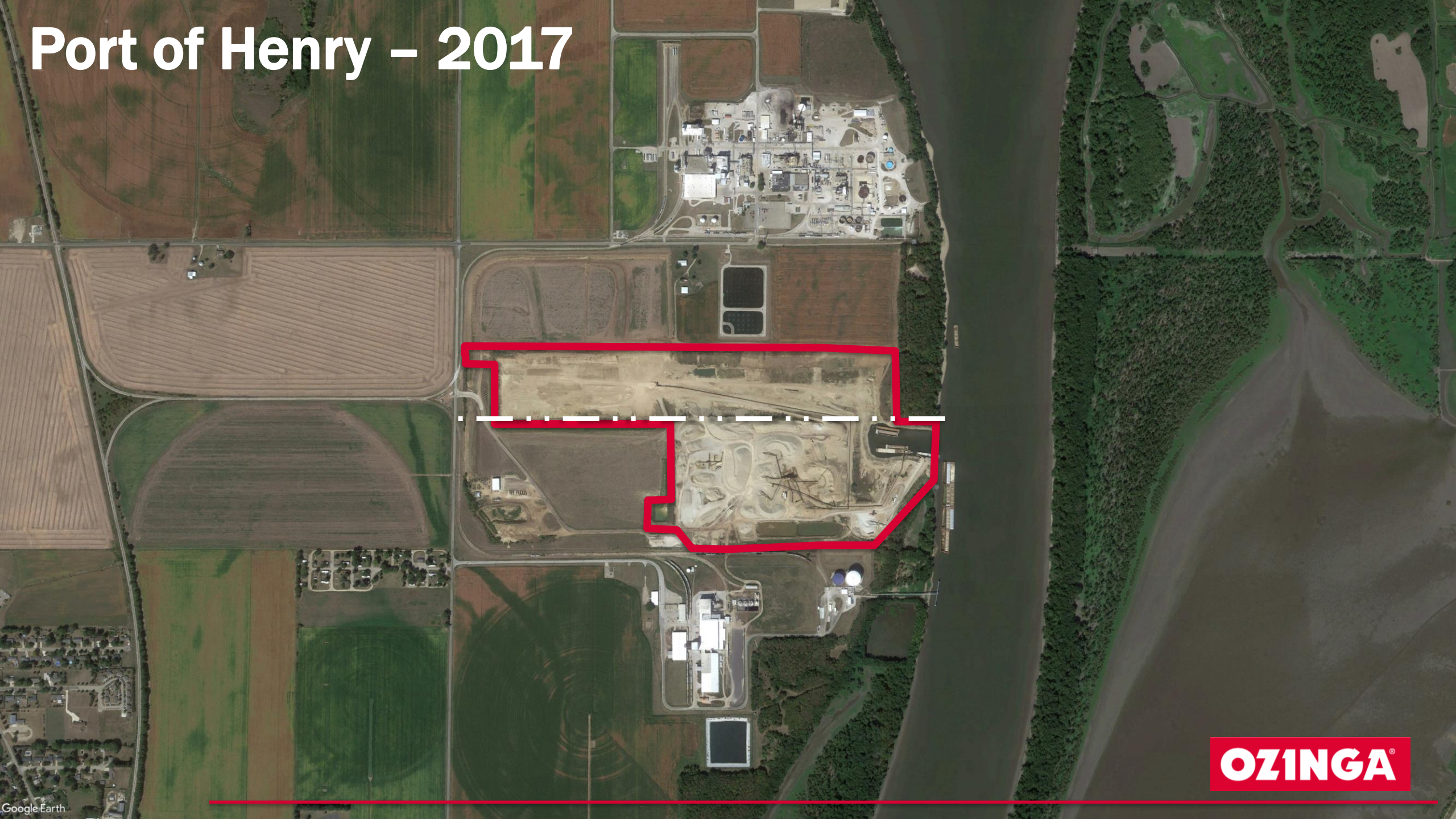


# Port of Henry – 2015





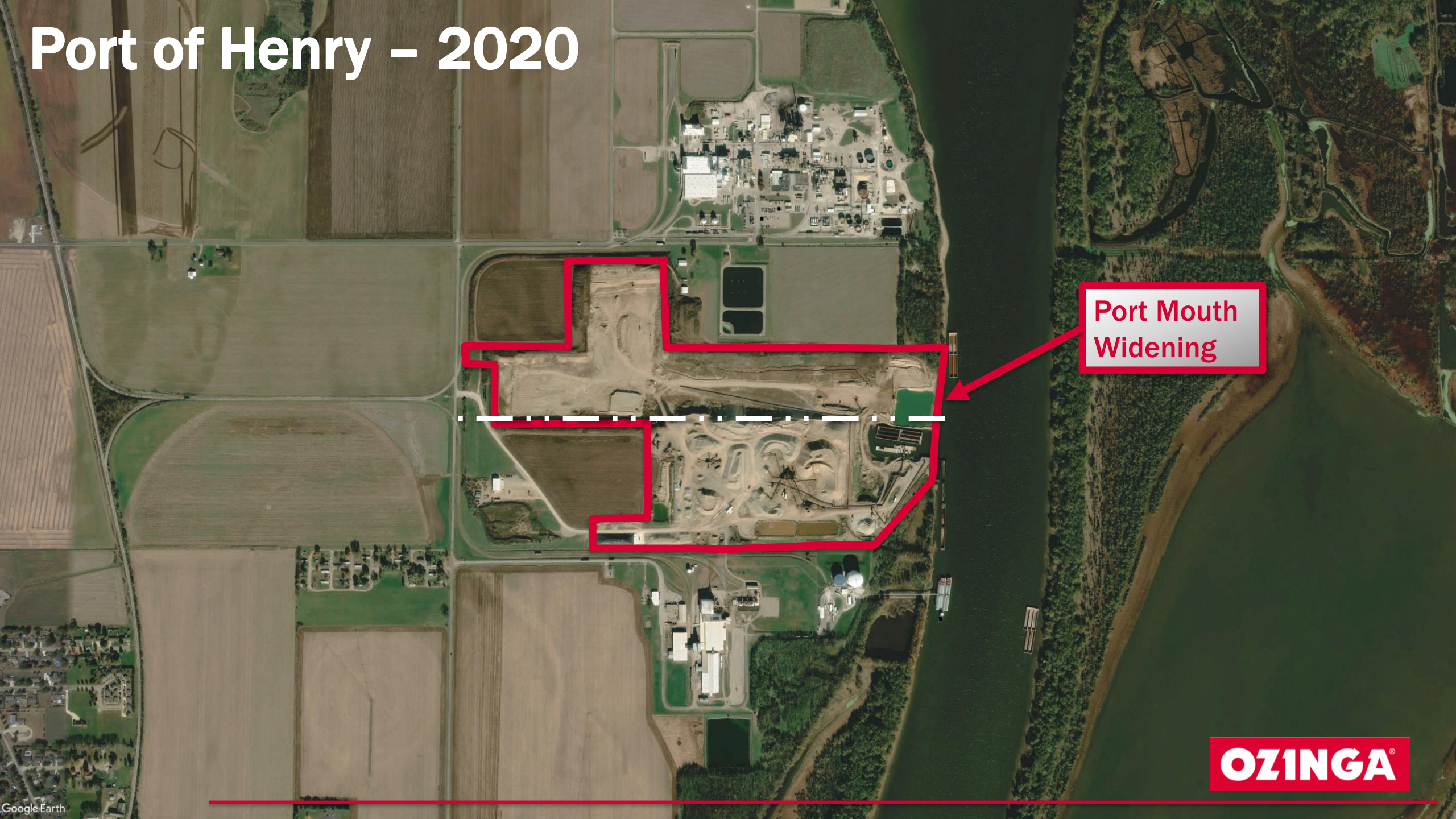
# Port of Henry – 2017



**OZINGA®**



# Port of Henry – 2020



Port Mouth  
Widening

**OZINGA®**



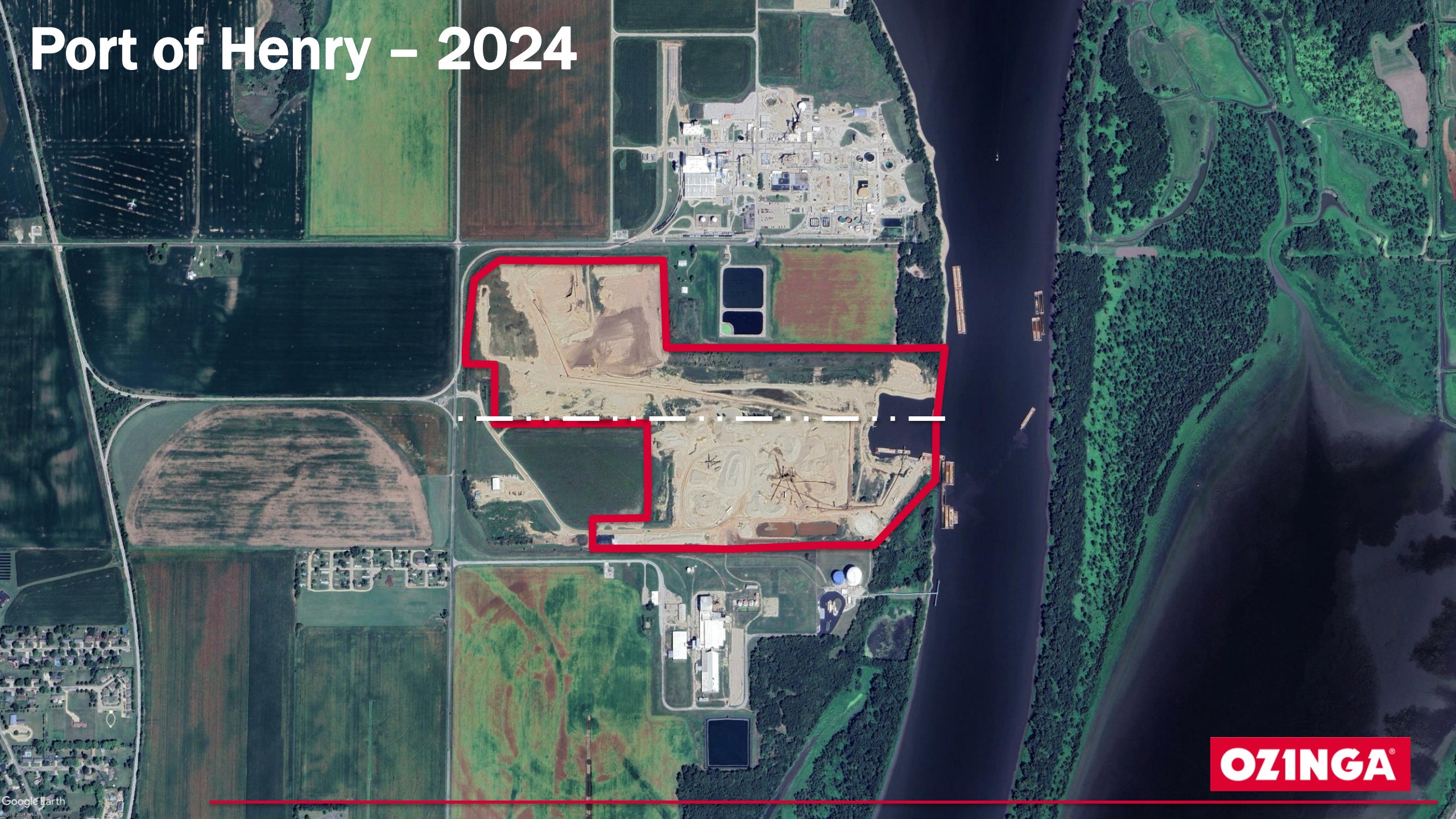
# Port of Henry – 2022

Port Mouth  
Widened

**OZINGA®**



# Port of Henry – 2024





# Port of Henry – 2024



**OZINGA®**



# Port of Henry – Historical Milestones

---

- Agreement signed to create port: **December 2006**
- First coworker hired: **2007**
- Plant assembly started: **2008**
- Plant production started: **April 3, 2009**
- Year one (1) production volume: **373,000 tons**
- Water opened to start barge operations: **2009**
- First barge loaded: **2010**
- Barge slip widened: **2021**
- Baled waste transfer station permitted: **2021**



# Port of Henry – Recent Milestones



## Henry Mining Operations

- **2024**
  - Production 450,000 Tons
  - Sales 455,000 Tons
- **Barge Loads Outbound**
  - 200 sand
  - 50 gravel
- **Barge Loads Inbound**
  - 10 Fertilizer
  - 25 Road salt
- **Overburden Dirt Relocated**
  - 150,000 Tons
  - Finish rough grade +/- 6"
  - Construct 2:1 slopes
  - Hydro-seeding





# Port of Henry – Key Stats

**Materials YTD: 8,000,000 Tons**

**Royalties (Impact Fees) Paid to COH: \$1,200,000**

**Key projects built with COH mined materials:**

- 1. Wrigley Field**
  - 1060 Project
- 2. Dan Ryan Expressway (I-90/94)**
  - Reconstruction
- 3. 400 Lake Shore Drive**
  - 858 ft & 72 floors
- 4. 1000 Michigan Avenue**
  - 805 ft & 73 floors





# Port of Henry – Opportunities

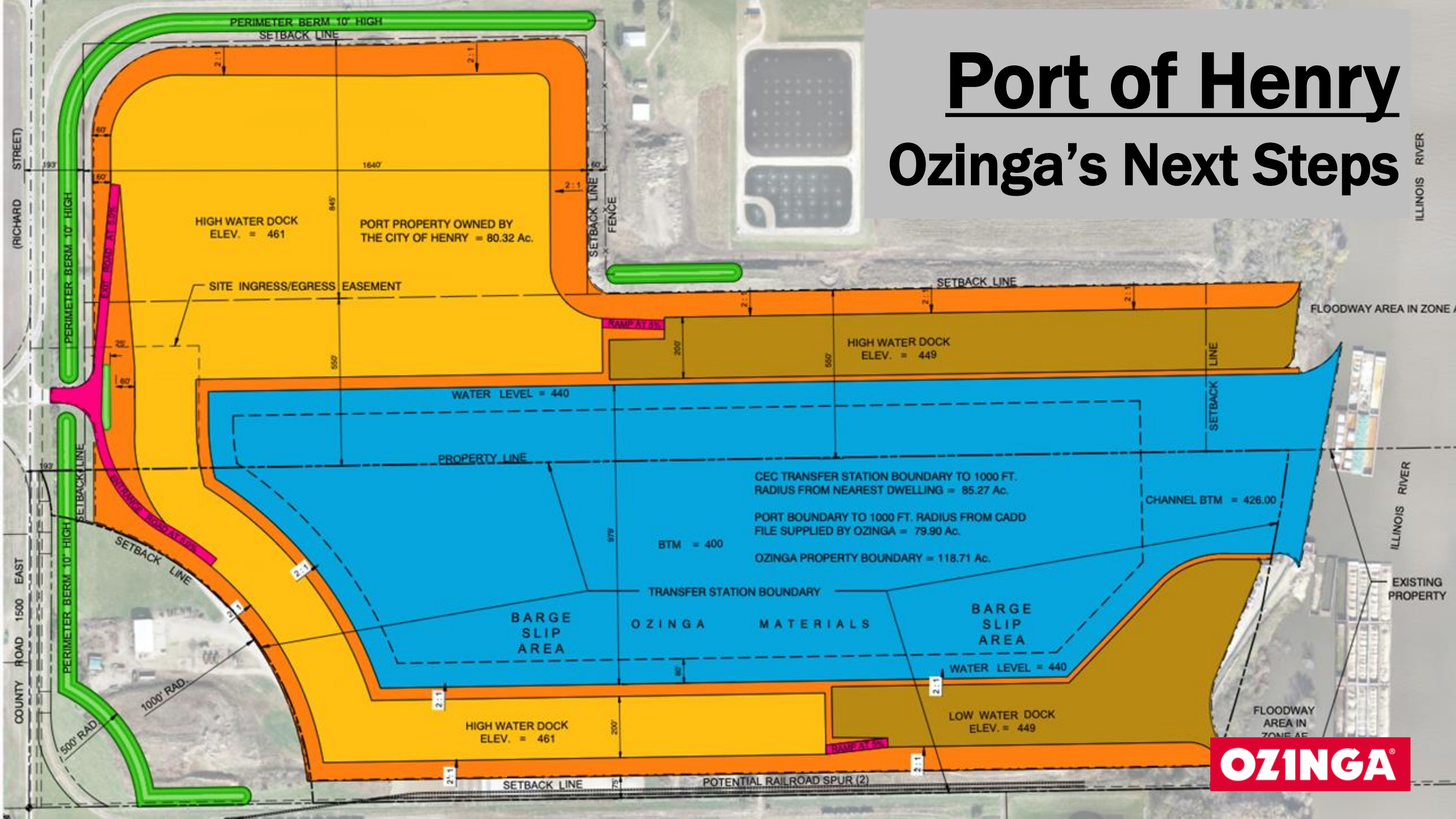
---

- Baled waste projects
- Waste-related manufacturing
- Potential industrial users
- Potential agricultural users
- Applied for 3 MARAD grants
- Finalist for Congressional Earmark
  - Only 20 of over 400 accepted



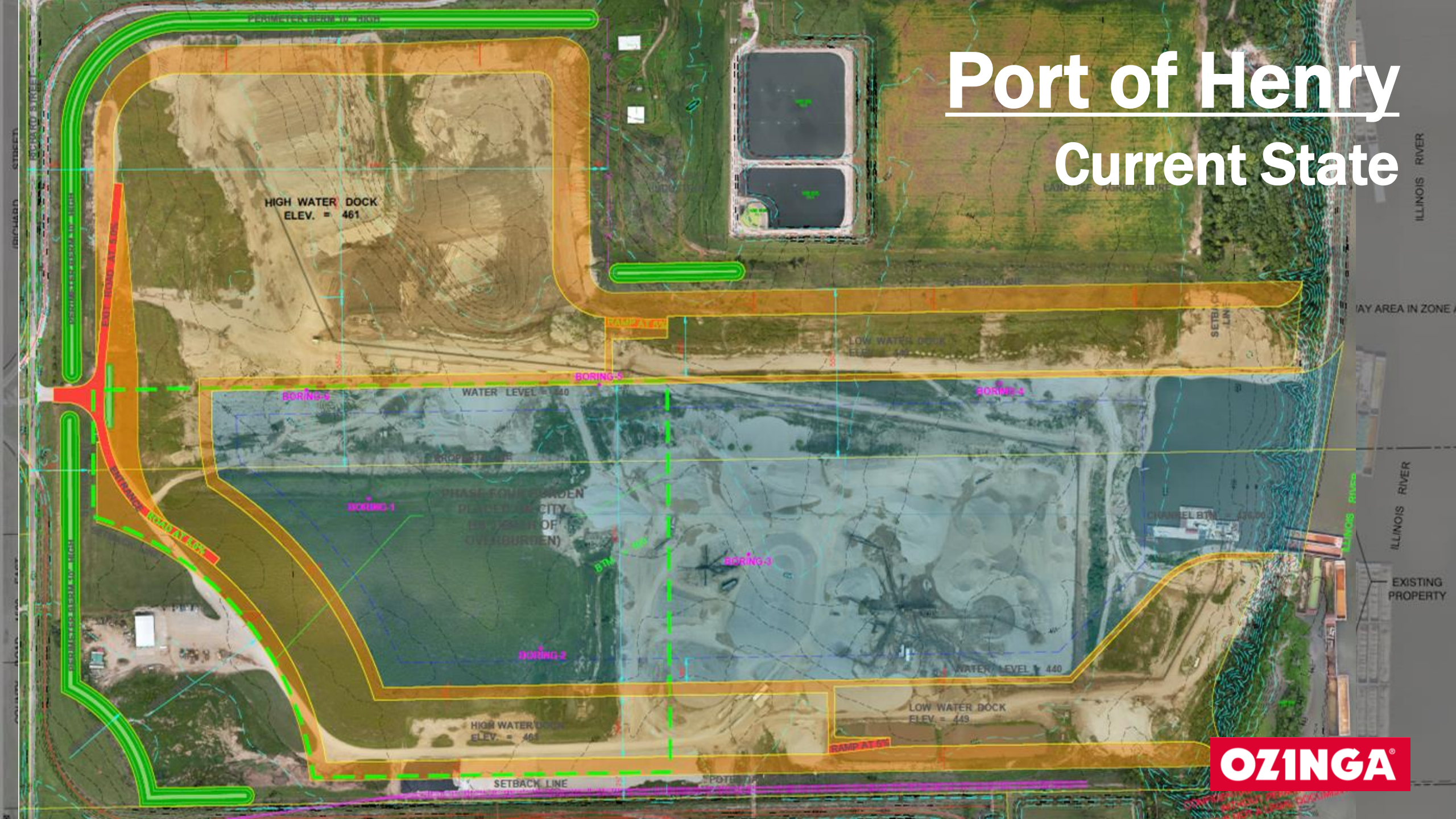
# Port of Henry

## Ozinga's Next Steps





# Port of Henry Current State





# Port of Henry

---

