

▶ PEEL HERE ▶

CAUTION

KEEP OUT OF REACH OF CHILDREN
READ SAFETY DIRECTIONS BEFORE OPENING OR USING

PEST CONTROLLERS OWN

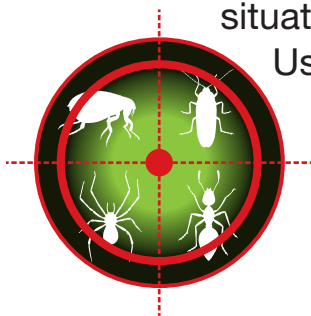
Deltamethrin 10SC

Insecticide

ACTIVE CONSTITUENT: 10 g/L DELTAMETHRIN

GROUP **3A** INSECTICIDE

For the control of a range of insect pests in various situations as per the Directions for Use Table.



**IMPORTANT: READ THIS LEAFLET BEFORE
OPENING OR USING**

PCO
PEST CONTROLLERS OWN

CONTENTS
5 Litres

DIRECTIONS FOR USE:**RESTRAINT:** DO NOT apply spray treatment outdoors if rain is imminent.

SITUATION	PEST	RATE	CRITICAL COMMENTS
Domestic, Commercial and Public Building:- including food processing establishments, shops, factories, ships, offices, schools, storerooms, hospitals, barracks, private houses and external areas associated with such establishments.	Cockroaches	Initial treatment 150 mL Maintenance treatments 75 mL (Refer to 'Use as a Surface Spray' section for dilution rates).	Conduct a thorough inspection and apply to known and potential cockroach harbours. A barrier application around areas where cockroach infestations maybe originating is also suggested.
	Web-spinning Spiders		Spray spiders, their webbing and areas where spiders may hide directly. It is recommended that webbing is left in place for a few days after application to optimise efficacy.
	Non web-spinning Spiders		Spray areas where spiders are known to occur.
	Ants		Where possible locate the nest and spray directly into the nest entrances. Penetration of insecticide can be assisted by pre-wetting sandy and porous soils with water. A thorough soaking treatment with insecticide mixture is required to destroy the nest. If nest cannot be located then spray infested areas.
	Fleas		Clean and vacuume infested areas and dispose of dust collected in the garbage in a sealed plastic bag. Lightly spray infested areas concentrating on areas under furniture etc. Treat pets with suitable registered flea control product. See also the notes on application to carpets below.
	Silverfish		Direct spray area to potential infestation eg. Under skirting boards and furniture where dark conditions may favour silver fish populations.
	Bed-bugs		Apply to bed frame and walls, cracks, crevices and skirting boards in the vicinity of the bed.

SITUATION	PEST	RATE	CRITICAL COMMENTS
Domestic, Commercial and Public Building:- including food processing establishments, shops, factories, ships, offices, schools, storerooms, hospitals, barracks, private houses and external areas associated with such establishments.	Bird mites	Initial treatment 150 mL Maintenance treatments 75 mL	Treat infested areas. Inspect roof voids and remove any old bird nest material. A suitably registered product such as Barmac Permethrin D Insecticide Dust is recommended for treatment in roof void areas.
	Carpet Beetles	(Refer to 'Use as a Surface Spray' section for dilution rates).	Apply to infested carpets particularly in areas of little or no traffic and underneath windows where adult beetles may be entering the building. See also the note on application to carpets below.
	Clothes moths		Spray surfaces in areas where clothes are stored. DO NOT spray the clothes themselves.
Domestic, Commercial and Public Building:- including food processing establishments, shops, factories, ships, offices, schools, storerooms, hospitals, barracks, private houses and external areas associated with such establishments.	Mosquitoes and houseflies	75 mL (Refer to 'Use as a Surface Spray' section for dilution rates).	Spray surfaces where flies and mosquitoes are known to come and rest. Flies – include external surfaces that are exposed to the morning sun. Mosquitoes – spray walls, awning, fences and vegetated areas in proximity to buildings. Note: The perception of the level of control of flying insects achieved within any given area treated with residual surface spray will be affected by the extent of in-migration of individuals from external (untreated) areas. A residual surface spray with only control those insects that alight on the treated surfaces and therefore complete elimination of flying insects from the treated area should not necessarily always be expected.

SITUATION	PEST	RATE	CRITICAL COMMENTS
Domestic, Commercial and Public Building:- including food processing establishments, shops, factories, ships, offices, schools, storerooms, hospitals, barracks, private houses and external areas associated with such establishments.	Stored product insect pests	75 mL (Refer to 'Use as a Surface Spray' section for dilution rates).	The use of this product in the control of stored product pests should be considered part of an integrated strategy to prevent development of insect populations. Best results will be obtained where good hygiene is maintained. Infested areas should be cleaned prior to application and regularly cleaned thereafter to reduce food sources for pests. When treating for beetle pests pay special attention to sheltered areas such as crack and crevices, under furniture and equipment, floors, walls and shelves. Adult moths can be controlled by applying this product to walls and surfaces where the flying adults come to rest.
Cut flowers for export	Quarantine pests	250 mL per 100 L water	Flowers must be totally submerged in the diluted product for not less than 1 minute and then left to dry naturally for 2 hours.
For short term protection of freshly felled pine logs to debarking.	Five-spined Bark Beetle (<i>Ips gradicollis</i>)	100 mL in 10 L water	Apply through knapsack or power sprayer at a rate of 10 L per 100m ² of surface area. Note: For best results apply promptly after felling or sawing operations.
For short term protection of freshly fells pine logs poles, posts and sawn timber including in situ timbers.	Beetle family Anobiidae, Beetle family Bostychidae		

NOT TO BE USED FOR ANY PURPOSE, OR IN ANY MANNER, CONTRARY TO THIS LABEL UNLESS AUTHORISED UNDER APPROPRIATE LEGISLATION.

GENERAL INSTRUCTIONS

MIXING / APPLICATION

Shake original container before use. Periodically agitate suspension during application to ensure thorough mixing. For best results, form a pre-mix of the required amount of product with an equal volume of water. Stir thoroughly. Add to spray tank and dilute with remaining amount of water. Agitate thoroughly.

DO NOT store diluted insecticide. Prepare a fresh solution as necessary.

DO NOT spray the moving parts of any machinery, electric motors or switchgear with the water-based product.

Use as a surface spray:

For use on non-porous surfaces: Dilute required amount of product with 5 L of water and apply as a course spray at a rate of 5 L per 100m² not exceeding the point of run-off.

For use on porous surfaces or for use through power equipment: Dilute required amount of the product with 10 L of water and apply per 100m² of surface, not exceeding the pint of run-off.

Note on application to carpets:

Whist carpets are regarded as porous surfaces, excess liquid application may produce water-stains and therefore the non-porous surface rate should be adopted if possible.

Hence for short pile carpet, the 5 L dilution rate (per 100m²) should be sufficient.

However, for long pile or shag carpet, the 10 L dilution rate (per 100m²) may be required, to ensure effective penetration and application to all of the carpet-pile.

Since carpets vary in their thickness, colour and material it is recommended that a small, inconspicuous area of carpet be sprayed and allowed to dry first to ensure that staining will not occur.

Use a residual surface treatment for control of stored product pests:

THE FOLLOWING MEASURES SHOULD BE OBSERVED:

- Ensure food items in store are not exposed to spray – if necessary remove food items from the area to be treated. Allow all treated surfaces to dry before replacing food items – where possible avoid spraying actual surfaces which food is likely to directly contact.
- DO NOT allow spray to contact food packaging material and discard any foodstuff accidentally contaminated with spray solution.

PRECAUTIONS

General

AVOID CONTACT WITH FOOD, FOOD UTENSILS OR SURFACES IN WHICH FOOD IS PREPARED.

Before use: Remove or cover all exposed foodstuffs. Cover all dishes and utensils, and surfaces where food is prepared.

After use: Thoroughly ventilate area. Clean up thoroughly before processing/ serving resumes.

For surface treatment only: DO NOT spray into the atmosphere using foggers or other devices designed to create an aerosol. Allow treated carpets to dry before resuming activity on them.

INSECTICIDE RESISTANCE WARNING

For insecticide resistance management, Pest Controllers Own Deltamethrin 10SC Insecticide is a Group 3A Insecticide.

GROUP 3A INSECTICIDE

Some naturally occurring insect biotypes resistant to Pest Controllers Own Deltamethrin 10SC Insecticide may exist through normal genetic variability in any insect population. The resistant individuals can eventually dominate the insect population if Pest Controllers Own Deltamethrin 10SC Insecticide or other Group 3A insecticides are used repeatedly. The effectiveness of Pest Controllers Own Deltamethrin 10SC Insecticide on resistant individuals could be significantly reduced. Since occurrence of resistant individuals is difficult to detect prior to use, Amgrow Pty Ltd accepts no liability for any losses that may result from the failure of Pest Controllers Own Deltamethrin 10SC Insecticide to control resistant insects. For information about strategies for managing insecticide resistance contact your local supplier or Amgrow Pty Ltd.

PROTECTION OF THE WILDLIFE, FISH, CRUSTACEANS AND ENVIRONMENT

Dangerous to fish. DO NOT contaminate streams, rivers or waterways with the chemical or used containers.

STORAGE AND DISPOSAL

Store in closed, original container in a cool, well-ventilated area. DO NOT store for prolonged periods in direct sunlight. Triple or preferably pressure rinse containers before disposal. Add rinsings to spray tank. DO NOT dispose of undiluted chemicals on-site. If recycling, replace cap and return clean containers to recycler or designated collection point. If not recycling, break, crush or puncture and bury empty containers in a local authority landfill. If no landfill available, bury the containers below 500 mm in a disposal pit specifically marked and set up for this purpose clear of waterways, desirable vegetation and tree roots. Empty containers and product should not be burnt.

PRECAUTIONS – RE-HANDLING

Allow spray to dry thoroughly, before handling materials (eg. cut flowers and sawn logs) that have been treated with Pest Controllers Own Deltamethrin 10SC Insecticide. If prior handling is necessary wear chemical resistant gloves. Gloves must be washed after each day's use.

SAFETY DIRECTIONS

Harmful if swallowed. Facial skin contact may cause temporary facial numbness. Will irritate eyes and skin. Avoid contact with eyes and skin. When opening the container, preparing spray and using prepared spray wear cotton overalls buttoned to the neck and wrist, washable hat, elbow-length PVC gloves and face shield. If product on skin, immediately wash area with soap and water. If in eyes, wash immediately with water. After use and before eating, drinking or smoking, wash hands, arms and face thoroughly with soap and water. After each day's use, wash gloves, face shield and contaminated clothing.

FIRST AID

If poisoning occurs, contact a doctor or Poisons Information Centre.
Phone Australia on 131126, New Zealand 0800 764 766.

MATERIAL SAFETY DATA SHEET

Additional information is listed in the Material Safety Data Sheet (MSDS) which can be obtained from the supplier.

CONDITIONS OF SALE

Amgrow Pty Ltd shall not be liable for any loss injury damage or death whether consequential or otherwise whatsoever or howsoever arising whether through negligence or otherwise in connection with the sale supply use or application of this product. The supply of this product is on the express condition that the purchaser does not rely on Amgrow's skill or judgement in purchasing or using the same and every person dealing with this product does so at his own risk absolutely. No representative of Amgrow has any authority to add to or alter these conditions.

APVMA Approval No.: 68802/59116



Manufactured by:

Amgrow Pty Ltd ABN 81 100 684 786
Unit B2A, 3-29 Birnie Avenue, Lidcombe NSW 2141
TELEPHONE: 1800 631 008



CAUTION

KEEP OUT OF REACH OF CHILDREN
READ SAFETY DIRECTIONS BEFORE OPENING OR USING

PEST CONTROLLERS OWN

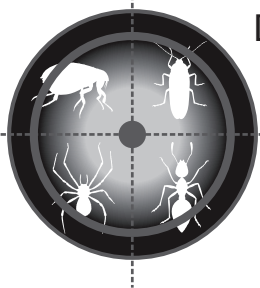
Deltamethrin 10SC

Insecticide

ACTIVE CONSTITUENT: 10 g/L DELTAMETHRIN

GROUP **3A** INSECTICIDE

For the control of a range of insect pests in
various situations as per the
Directions for Use Table.



**IMPORTANT: READ THE ATTACHED LEAFLET
BEFORE OPENING OR USING**

PCO
PEST CONTROLLERS OWN

CONTENTS
5 Litres

GLUE AREA

GLUE AREA



PEST CONTROLLERS OWN
Deltamethrin 10SC
Insecticide

STORAGE AND DISPOSAL

Store in closed, original container in a cool, well-ventilated area. DO NOT store for prolonged periods in direct sunlight. Triple or preferably pressure rinse containers before disposal. Add rinsings to spray tank. DO NOT dispose of undiluted chemicals on-site. If recycling, replace cap and return clean containers to recycler or designated collection point. If not recycling, break, crush or puncture and bury empty containers in a local authority landfill. If no landfill available, bury the containers below 500 mm in a disposal pit specifically marked and set up for this purpose clear of waterways, desirable vegetation and tree roots. Empty containers and product should not be burnt.

PRECAUTIONS – RE-HANDLING

Allow spray to dry thoroughly, before handling materials (eg. cut flowers and sawn logs) that have been treated with Pest Controller's Own Deltamethrin 10SC Insecticide. If prior handling is necessary wear chemical resistant gloves. Gloves must be washed after each day's use.

SAFETY DIRECTIONS

Harmful if swallowed. Facial skin contact may cause temporary facial numbness. Will irritate eyes and skin. Avoid contact with eyes and skin. When opening the container, preparing spray and using prepared spray wear cotton overalls buttoned to the neck and wrist, washable hat, elbow-length PVC gloves and face shield. If product on skin, immediately wash area with soap and water. If in eyes, wash immediately with water. After use and before eating, drinking or smoking, wash hands, arms and face thoroughly with soap and water. After each day's use, wash gloves, face shield and contaminated clothing.

FIRST AID

If poisoning occurs, contact a doctor or Poisons Information Centre. Phone Australia on 131126, New Zealand 0800 764 766.

MATERIAL SAFETY DATA SHEET

Additional information is listed in the Material Safety Data Sheet (MSDS) which can be obtained from the supplier.

CONDITIONS OF SALE

Amgrow Pty Ltd shall not be liable for any loss injury damage or death whether consequential or otherwise whatsoever or howsoever arising whether through negligence or otherwise in connection with the sale supply use or application of this product. The supply of this product is on the express condition that the purchaser does not rely on Amgrow's skill or judgement in purchasing or using the same and every person dealing with this product does so at his own risk absolutely. No representative of Amgrow has any authority to add to or alter these conditions.

APVMA Approval No.: 68802/59116

PCO
PEST CONTROLLERS OWN

Manufactured by:

Amgrow Pty Ltd ABN 81 100 684 786
Unit B2A, 3-29 Birnie Avenue, Lidcombe NSW
2141 TELEPHONE: 1800 631 008

Amgrow

IN A TRANSPORT
EMERGENCY DIAL 000
• POLICE OR FIRE
BRIGADE •



Batch Number

Date of

Manufacture