

# Department of Education

# SPTVE

## Computer Systems Servicing 10

### Domain Controller

### Quarter 2: Week 1 Module



Michael T. Dela Cruz

**Writer**

Gregorio S. Quineri

**Validator**

Dr. Valentina A. Ballesteros

**Quality Assurance Team Chair**



**Schools Division Office – Muntinlupa City**

Student Center for Life Skills Bldg., Centennial Ave., Brgy. Tunasan, Muntinlupa City  
(02) 8805-9935 / (02) 8805-9940



## EXPECTATIONS

At the end of the module, you should be able to:

1. check normal server functions in accordance with manufacturer's instructions;
2. install and update required modules/add-ons on NOS installation procedures; and
3. confirm network services based on user/system requirements.



## PRE-TEST

**Directions:** Read the following statement carefully. Encircle the letter of the correct answer.

1. What will you type in order to start "Welcome to the Active Directory Domain Service Installation Wizard"?  
A. dcpromo  
B. DNS  
C. Forest  
D. FQDN
2. The the page with the strong password you chose in your server is called\_\_\_\_\_  
A. Forest Root Domain  
B. Reboot on completion  
C. Additional Domain Controller Options  
D. Directory Service Restore Mode Administrator Password
3. What will you select in functional level page?  
A. Windows 7  
B. Windows 10  
C. Windows Server 2008  
D. Windows Server 2008 R2
4. A set of files and folders that reside on the local hard disk of each domain controller in a domain is also know as\_\_\_\_\_  
A. Dcpromo  
B. Forest  
C. FQDN  
D. SYSVOL
5. This is the last and important step in order to take effect all the settings that you have changed is called\_\_\_\_\_  
A. Reboot on completion  
B. Set DNS server  
C. Set-up password  
D. Type dcpromo
6. The following are the functions of directory except\_\_\_\_\_  
A. Computers  
B. Printers  
C. Ports  
D. User Accounts
7. The most important consideration before installing Domain controller is\_\_\_\_\_  
A. Assign Server Name  
B. Assign Static IP address  
C. Update the date and time  
D. Install Windows Server 2008 R2

8. What page will you select as DNS Server?
  - A. Forest functional level
  - B. Choose a Deployment Configurations
  - C. Additional Domain Controller Options
  - D. Welcome Active Directory Domain Service
9. Which will you click after to set password in your server?
  - A. Continue
  - B. Next
  - C. Reboot
  - D. Yes
- 10 Which of the following choices will serve as functional domain name?
  - A. Apple.docx
  - B. Ball.jpeg
  - C.CSS.com
  - D. Dog.exe



## LOOKING BACK

**Directions:** Arrange the jumbled letters to form a word / acronym based on the definition.

- \_\_\_\_\_ 1. **S D S S R E E R V** – Maintains a list of servers and systems.
- \_\_\_\_\_ 2. **V L O S S Y** – A set of files and folders that reside on the local hard disk of each domain controller in a domain.
- \_\_\_\_\_ 3. **Q D F N**-Complete domain name for a specific computer, or host, on the internet.
- \_\_\_\_\_ 4. **C D**-Enables users to authenticate to the domain for access to network resources.
- \_\_\_\_\_ 5. **P O R O M C D**-a tool in Active Directory that installs and removes Active Directory Domain Services and promotes domain controllers

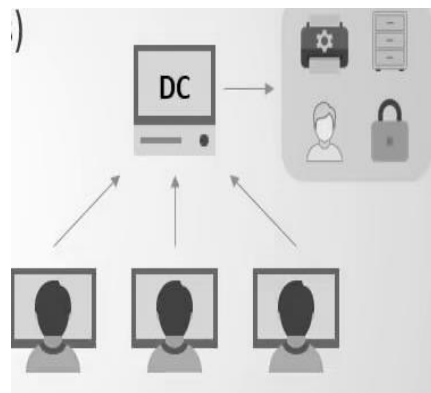


## BRIEF INTRODUCTION

**Domain Controller (DC)** is any server with **AD DS** role that responds to security authentication request and contains Active Directory & Group Policy.

Function of Directory Service (**Active Directory Users and Computers**)

- a) User accounts (usernames and passwords)
- b) Computers
- c) Printers
- d) File shares



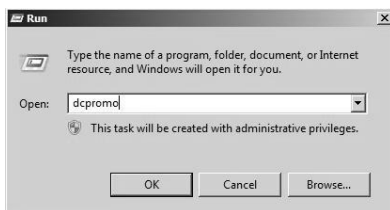
## How to install Domain Controller in Windows Server 2008 R2?

Before configuring Domain Controller in your server you must first:

- Install Windows Server 2008 R2 in your server
- Update the date and time
- Assign Server name and Static IP address of the server

- Go to **Start menu** and type **dc promo** in the search box.
- Opens **Welcome to the Active Directory Domain Service Installation Wizard** and click **Next**.
- The **Operating System Compatibility** page will open and click **next**.
- The “**Choose a Deployment Configuration**” page will appear and Select **Create a new domain in a new forest** option.
- On the **Name the Forest Root Domain** page, Type the name of the domain (Example: **CSS.com**) and click **Next**.
- Set Forest Functional Level** page, select the **Windows Server 2008 R2** option. Click **Next**.
- On the **Additional Domain Controller Options** page, Select **DNS server** and click **Next**.
- Click **Yes** to continue
- Leave the Database, Log Files and SYSVOL folder in their default locations and click **Next**
- On the **Directory Service Restore Mode Administrator Password**, enter a strong password in the **Password** and **Confirm password** text boxes.
- Click **Next**.
- Active Directory will install and put a checkmark in the **Reboot on Completion**

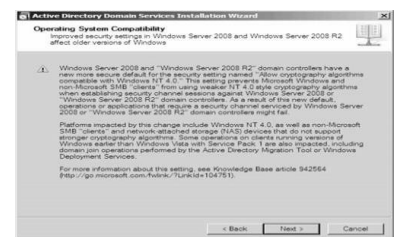
1



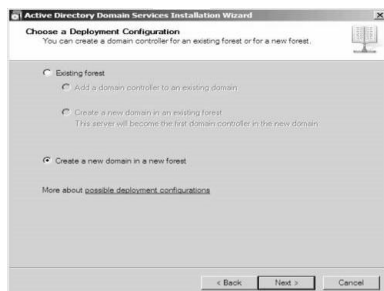
2



3



4



5



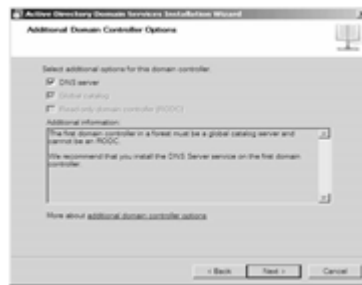
6



7



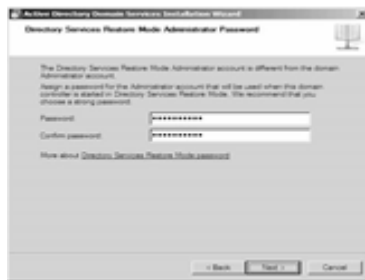
8



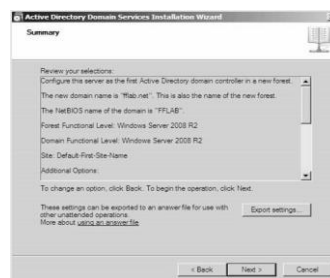
9



10



11



12



## ACTIVITIES

**Directions:** Arrange the steps into the correct order in creating domain controller.

### Steps 1-6

- \_\_\_\_\_ a. On Operating System Compatibility page and click next
- \_\_\_\_\_ b. Set Forest Functional Level page, select the Windows Server 2008 R2 option. Click Next.
- \_\_\_\_\_ c. Type dcpromo
- \_\_\_\_\_ d. Choose a Deployment Configuration and select the Create a new domain in a new forest option
- \_\_\_\_\_ e. Name the Forest Root Domain page and click Next
- \_\_\_\_\_ f. Start Welcome to the Active Directory Domain Service Installation Wizard.

## Steps 7- 12

- \_\_\_\_\_ a. Reboot on completion
- \_\_\_\_\_ b. Click yes to continue
- \_\_\_\_\_ c. Directory Service Restore Mode Administrator Password and enter strong password
- \_\_\_\_\_ d. Sysvol folder and click next
- \_\_\_\_\_ e. Confirm the information on the Summary page and click Next.
- \_\_\_\_\_ f. Additional Domain Controller Options page and choose DNS server



### REMEMBER

**Directions:** Explain and write your answer on the spaces provided for.

1. What is the role of the Domain Controller?

---

---

---

---

2. Simplify the the steps in creating domain controller

---

---

---

---

---

---

---

---

---

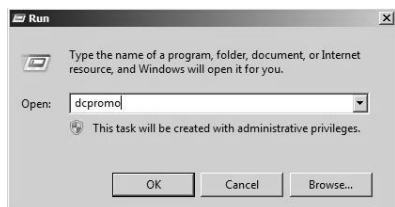
---



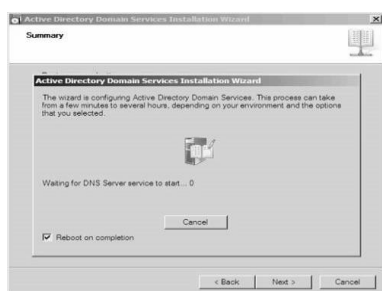
## CHECK YOUR UNDERSTANDING

**Directions:** Identify the steps of creating domain controller.

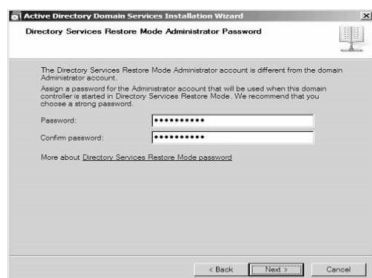
1.



2.



3.



4.



5.

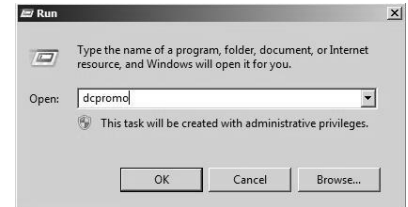




## POST TEST

**Directions:** Read the following statement carefully. Encircle the correct answer.

- The diagram shows that the user entered “dcpromo” on the search box. What page will appear if you click Ok or press Enter?
  - Forest Root Domain
  - Reboot on completion
  - Additional Domain Controller
  - Active Directory Domain Service Installation Wizard
- This server is with AD DS role that responds to security authentication request is called\_\_\_\_\_.
  - Domain Controller
  - FQDN
  - SYSVOL
  - Windows 10
- The setting of password will be done on what page?
  - Reboot on completion
  - Forest Root Domain
  - Additional Domain Controller
  - Directory Service Restore Mode Administrator
- Setting your Windows Server 2008 R2 will be change in what page?
  - Functional level page
  - Additional Domain Controller
  - Directory Service Restore Mode Administrator
  - Active Directory Domain Service Installation Wizard
- The illustration shows on how set-up what particular configuration?
  - DNS server
  - Password
  - SYSVOL
  - Reboot
- What will be the next page after you click Yes? (Please refer to the diagram used in Item number 5)
  - Reboot on completion
  - Forest Root Domain
  - Additional Domain Controller
  - Directory Service Restore Mode Administrator





7. A set of files and folders that reside on the local hard disk of each domain controller in a domain is also known as\_\_\_\_\_.
- A. Dcpromo
  - B. Forest
  - C. FQDN
  - D. SYSVOL
8. The most important consideration before installing Domain controller is\_\_\_\_\_.
- A. Assign Server Name
  - B. Assign Static IP address
  - C. Update the date and time
  - D. Install Windows Server 2008 R2
9. The following are the functions of directory except\_\_\_\_\_
- A. Computers
  - B. Printers
  - C. Ports
  - D. User Accounts
10. What page will you select as DNS Server?
- A. Forest functional level
  - B. Choose a Deployment Configurations
  - C. Additional Domain Controller Options
  - D. Welcome Active Directory Domain Service

<p><b>ANSWER KEY</b></p> <p><b>Pre-test</b></p> <ol style="list-style-type: none"> <li>1. A</li> <li>2. D</li> <li>3. D</li> <li>4. D</li> <li>5. A</li> <li>6. C</li> <li>7. D</li> <li>8. C</li> <li>9. B</li> <li>10. C</li> </ol> <p><b>Looking Back</b></p> <ol style="list-style-type: none"> <li>1. DNS SERVER</li> <li>2. SYSVOL</li> <li>3. FDQN</li> <li>4. DC</li> <li>5. DCPROMO</li> </ol>	<p><b>Activity (1-6)</b></p> <ol style="list-style-type: none"> <li>a) 3</li> <li>b) 6</li> <li>c) 1</li> <li>d) 4</li> <li>e) 5</li> <li>f) 2</li> </ol> <p><b>Activity (7-12)</b></p> <ol style="list-style-type: none"> <li>a. 12</li> <li>b. 8</li> <li>c. 14</li> <li>d. 9</li> <li>e. 11</li> <li>f. 7</li> </ol>	<p><b>Check your understanding</b></p> <ol style="list-style-type: none"> <li>1. Type dcprmo</li> <li>2. Reboot on completion</li> <li>3. Directory Service Restore Mode</li> <li>Administrator Password and enter strong password</li> <li>4. Name the Forest Root Domain page and click Next</li> <li>5. Welcome to the Active Directory Domain Service Installation Wizard.</li> </ol> <p><b>Post Test</b></p> <ol style="list-style-type: none"> <li>1. D</li> <li>2. A</li> <li>3. D</li> <li>4. A</li> <li>5. C</li> <li>6. D</li> <li>7. D</li> <li>8. C</li> <li>9. C</li> <li>10. D</li> <li>11. D</li> </ol>
---	---	--

## References

<https://www.youtube.com/watch?v=cTe5GsyhKUk> Date retrieved: September 17,2020

<https://www.youtube.com/watch?v=QGfwfWcLFMw&t=2s> Date retrieved: September 17, 2020

Computer Systems Servicing NCII, Competency Based Learning Material, John Derrick Ramos