

Department of Education

SPTVE

Computer Systems Servicing 10

Dynamic Host Configuration Protocol

Quarter 2: Week 2 Module



Michael T. Dela Cruz

Writer

Gregorio S. Quineri

Validator

Dr. Valentina A. Ballesteros
Quality Assurance Team Chair



Schools Division Office – Muntinlupa City

Student Center for Life Skills Bldg., Centennial Ave., Brgy. Tunasan, Muntinlupa City
(02) 8805-9935 / (02) 8805-9940



EXPECTATIONS

At the end of the module, you should be able to:

1. check normal server functions in accordance with manufacturer's instructions;
2. install and update required modules/add-ons on NOS installation procedures; and
3. confirm network services based on user/system requirements.



PRE-TEST

Directions: Read the following statement carefully. Encircle the letter of the correct answer.

1. DHCP stands for_____
 - A. Domain Host Control Protocol
 - B. Dynamic Host Control Protocol
 - C. Domain Host Configuration Protocol
 - D. Dynamic Host Configuration Proctocol
2. What version of IP address is used in configuring DHCP role?
 - A. v3
 - B. v4
 - C. v5
 - D. v6
3. If you want to locate server manager you must find_____
 - A. administrative tools
 - B. DHCP
 - C.DNS
 - D. IP Address
4. This the tab you click if you already set the desired IP address.
 - A. continue
 - B. game over
 - C. next
 - D.valid
5. What will be the next step after validating IP address?
 - A. add DHCP
 - B. add IP address
 - C. add password
 - D. add scope name
6. This procedure will save the changes you have made in the server.
 - A. activating Scope
 - B. click Install Button
 - C. restarting Server
 - D. typing stating IP
7. What is the next procedure after opening administrative tools?
 - A. add roles
 - B. install DCHP
 - C. type IP Address
 - D. open start menu

8. Where will you type the IP address of the computer server?
 - A. DHCP Server
 - B. administrative tools
 - C. roles Summary and Add roles
 - D. preferred DNS Server IPv4 address
9. What will you click after you activated Server manager?
 - A. DHCP Server
 - B. administrative tools
 - C. roles Summary and Add roles
 - D. preferred DNS Server IPv4 address
10. What will you chose after naming scope and identifying IP address range?
 - A. restart
 - B. install
 - C. valid
 - D. roles



LOOKING BACK

Directions: Underline the word/s which corresponds to the given function.

1. **(Server, Router, Switch)** - a computer which manages access to a centralized resource
2. **(Server, Router, Switch)** - networking hardware that connects devices on a computer network by using packet switching to receive and forward data to the destination
3. **(Server, Router, Switch)** - perform the traffic directing functions on the Internet
4. **(IP address, Network Administrator)** - identifying number that is associated with a specific computer or computer network
5. **(IP address, Network Administrator)** - responsible for keeping an organization's computer network up-to-date and operating as intended.



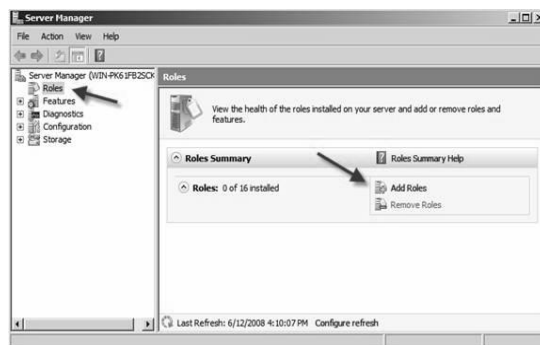
BRIEF INTRODUCTION

Dynamic Host Configuration Protocol (DHCP) is a protocol used to assign an IP address to a computer or device that has been connected to a network automatically. Routers, switches, or servers that use DHCP to assign addresses to other computers can make setup and management easier for the network administrator.

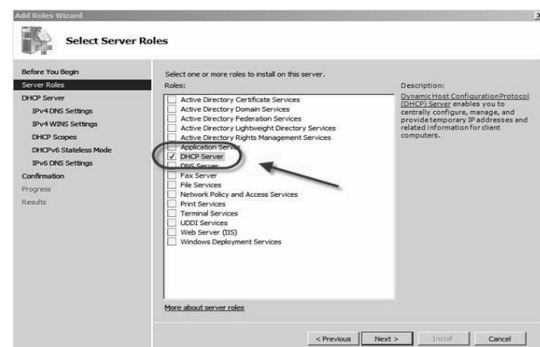


How to install DHCP in Windows Server 2008 R2

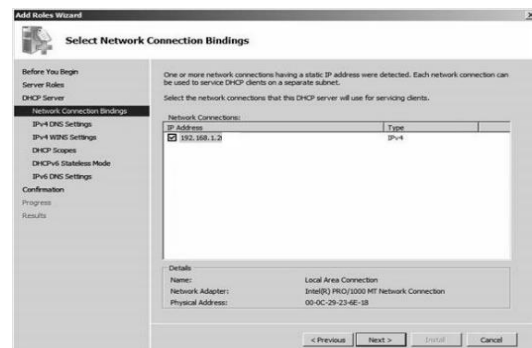
1. Click **Start** button
2. Go to **Administrative Tools**
3. Click **Server Manager**
4. Locate **Roles Summary** then click **Add Roles**



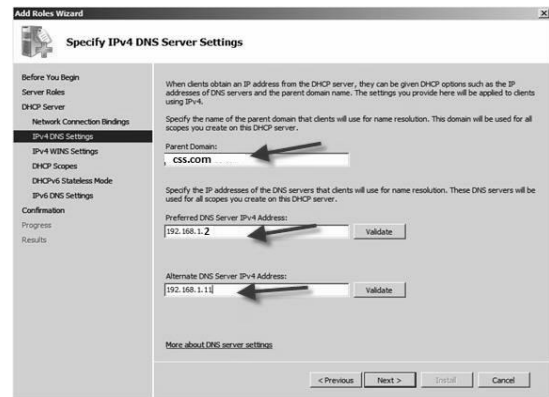
5. Click **Next** Button
6. Check **DHCP Server** in the list of Roles
7. Click **Next** Button



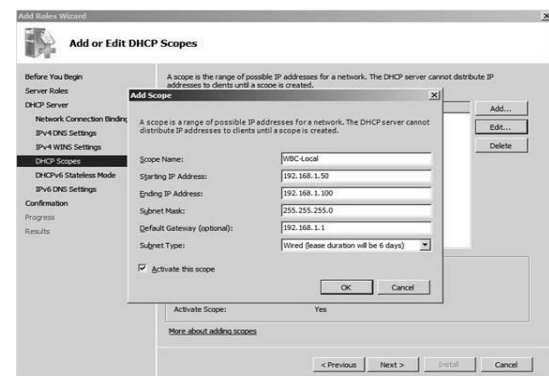
8. Click **Next** Button
9. Make sure the IP address of Server has a **check** then click **Next** button
10. Type the IP address of the Server in the **Preferred DNS Server IPv4 address** text box



11. Click the **Validate** Button
12. Click **Next** Button
13. Click **Next** Button
14. Click **Add** button on the right side to add scope
15. Type the **scope name**
16. Type the **Starting IP address:**
17. Type the **Ending IP address:**
18. Make sure **Activate this scope** has a **Check** then click **OK**



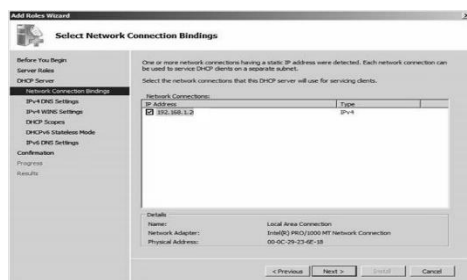
19. The name of the scope and IP address range will appear then click **Next** button
20. Click **Next** button
21. Click **Next** button
22. Click **Next** button
23. Click **Install** button
24. Click **Close** button then **Restart** your server computer.



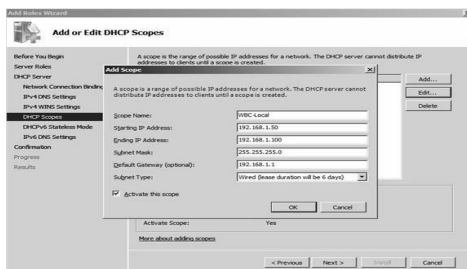
ACTIVITIES

Directions: Label each picture with corresponding step in adding DHCP role (Server).

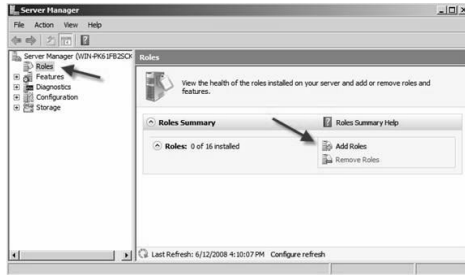
A.



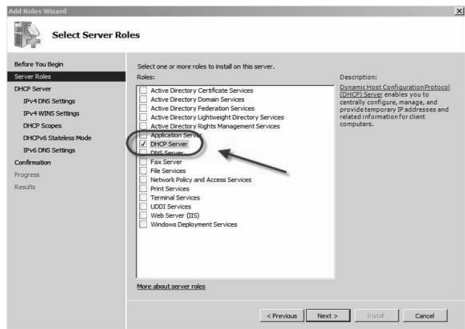
B.



C.



D.



E.



REMEMBER

Directions: Explain and write your answer on the spaces provided for.

1. What is the function DHCP?

2. List and summarize the steps in adding DHCP role in a server



CHECK YOUR UNDERSTANDING

Directions: Arrange the steps in adding DHCP role in a server. (Refer to Activity 1 and use the corresponding letter to each picture)

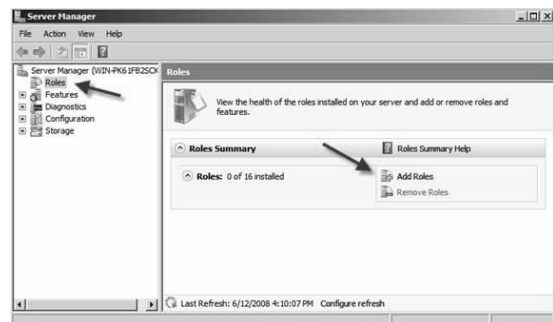
1. _____
2. _____
3. _____
4. _____
5. _____



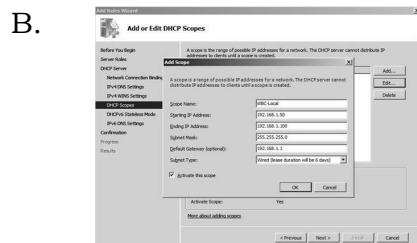
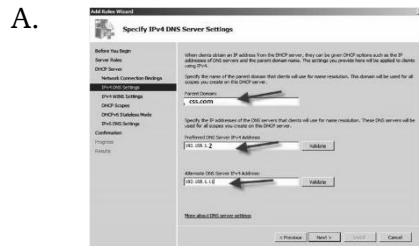
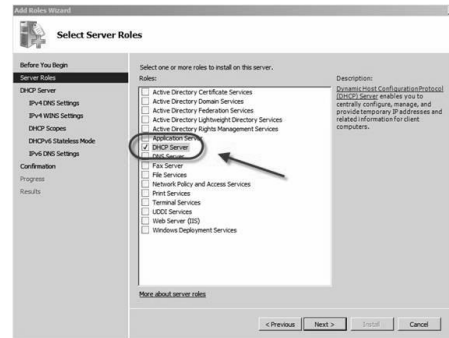
POST TEST

Directions: Read the following statement carefully. Encircle the letter of the correct answer.

1. Which of the following procedures will that show the given diagram?
 - A. install>restart
 - B. valid> add scope
 - C. starting IP > ending IP
 - D. administrative tools>server Manager
2. What will you do in order to proceed to the next step?
 - A. click Next > DHCP Server
 - B. roles Summary > add roles
 - C. type Scope name > starting IP
 - D. click Next > preferred DNS Server



3. The picture shows what particular procedure in installing DHCP role?
 - A. click Valid > click Next
 - B. click DHCP > click Add
 - C. click IP Address > click Add
 - D. click DHCP Server > click Next
4. Which of the following is the next process if you execute the previous (Question #3 answer) step?



5. The version of the IP address to be used in this activity would be_____
 - A. version 1
 - B. version 2
 - C. version 4
 - D. version 5
6. It is a protocol used to assign an IP address to a computer is also known as_____
 - A. DNS
 - B. DHCP
 - C. router
 - D. switch

7. The diagram shows what procedure of configuring DHCP role?

- A. restarting Server
- B. typing Scope Name
- C. validating DNS Server
- D. typing Preferred DNS Server

8. The next step you that will you encounter after the previous step (Question #7) and clicking the next button is

- A. restarting server
- B. typing scope name
- C. clicking Install button
- D. typing Ending IP address

9. The acronym DHCP has a meaning of _____

- A. Domain Host Control Protocol
- B. Dynamic Host Control Protocol
- C. Domain Host Configuration Protocol
- D. Dynamic Host Configuration Protocol

10. Opening of administrative tools is crucial in order to configure server manager. What will you click to activate it?

- A. next button
- B. start button
- C. valid Button
- D. yes Button



<p>Check your understanding</p> <p>1. C 2. D 3. A 4. E 5. B</p> <p>Post Test</p> <p>1. D 2. B 3. D 4. D 5. C 6. B 7. C 8. B 9. D 10. B</p>	<p>Activity</p> <p>A. Type the IP address of the Server in the Preferred DNS Server IPv4 address text box B. The name of the scope and IP address range C. Locate Roles Summary then click Add roles D. Check DHCP in the list Roles E. Type Scope name, Starting Address and Ending Address</p>	<p>ANSWER KEY</p> <p>Pre-test</p> <p>1. D 2. B 3. A 4. C 5. D 6. C 7. A 8. D 9. C 10. B</p> <p>Looking Back</p> <p>1. SERVER 2. SWITCH 3. ROUTER 4. DIP ADDRESS 5. NETWORK ADMINISTRATOR</p>
--	--	--

References

Computer Systems Servicing NCII, Competency Based Learning Material, John Derrick Ramos