

Department of Education

SPTVE

Computer Systems Servicing 10

File Server

Quarter 2: Week 3 Module



Michael T. Dela Cruz

Writer

Gregorio S. Quineri

Validator

Dr. Valentina A. Ballesteros
Quality Assurance Team Chair



Schools Division Office – Muntinlupa City

Student Center for Life Skills Bldg., Centennial Ave., Brgy. Tunasan, Muntinlupa City
(02) 8805-9935 / (02) 8805-9940



EXPECTATIONS

At the end of the module, you should be able to:

1. check normal server functions in accordance with manufacturer's instructions;
2. install and update required modules/add-ons on NOS installation procedures ;and
3. confirm network services based on user/system requirements.



PRE-TEST

Directions: Read the following statement carefully. Encircle the letter of the correct answer.

1. It is a computer on a network that is used to provide users on a network with access to files is called_____
A. DNS Server
B. DHCP Server
C. file Server
D. web Server
2. Administrative tools can be accessed by activating_____
A. close button
B. save button
C. start button
D. restart button
3. What is the next page after you have configured already the administrative tools?
A. DHCP Server
B. file Server
C. server Manager
D. web server
4. This is the page where you can assign the role of the server.
A. file Services
B. IP Address
C. roles summary
D. validate role
5. What will you check after you have clicked add role and next button?
A. file services
B. IP Address
C. roles summary
D. validate role
6. You will check "File Server Resource Manager" after clicking what role?
A. file Service
B. file Server
C. file role
D. file only

7. The next procedure after checking "File Server Resource Manager is to_____?
 A. Click Next > Disk Local C. Click Next > File Services
 B. Click Next > Local Disk D. Click Next > File Server
8. The place where you can assigned all sharing folders and files into it is called_____?
 A. local Disk C: C. local disk E:
 B. local Disk D: D. local disk F:
9. The second to the last procedure in installing File Server is called_____
 A. Close C. roles
 B. Install D. valid
10. The last page must be closed as the last step of the the process. This statement is _____
 A. false C. satisfactory
 B. maybe D. true



LOOKING BACK

Directions: Read the following statement carefully. Encircle the letter of the correct answer.

1. DHCP stands for_____
 A. Domain Host Control Protocol
 B. Dynamic Host Control Protocol
 C. Domain Host Configuration Protocol
 D. Dynamic Host Configuration Proctocol
2. The version of IP address used in configuring DHCP role?
 A. v3 C. v5
 B. v4 D. v6
3. If you want to locate server manager you must find_____
 A. administrative tools C. DNS
 B. DHCP D. IP Address
4. This the tab you click if you already set the desired IP address.
 A. continue C. next
 B. game over D. valid
5. What will be the next step after validating IP address?
 A. add DHCP C. add password
 B. add IP address D. add scope name

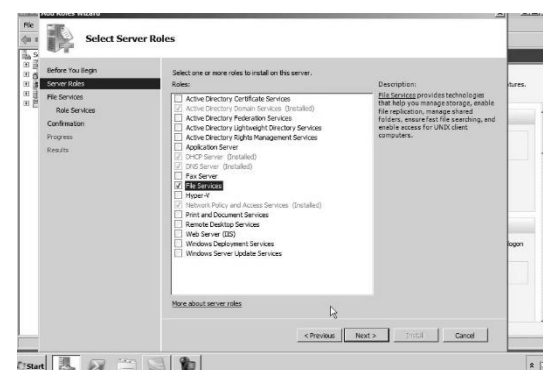
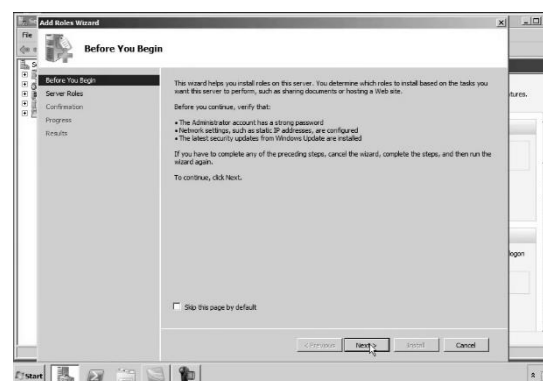
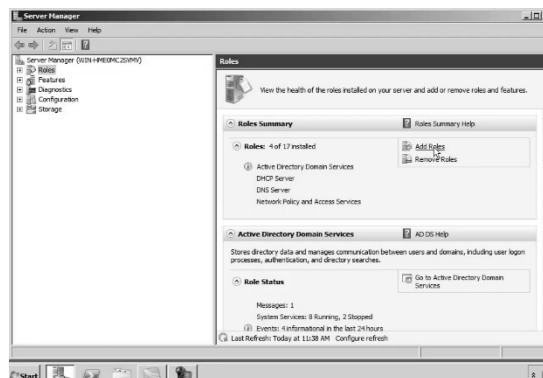


BRIEF INTRODUCTION

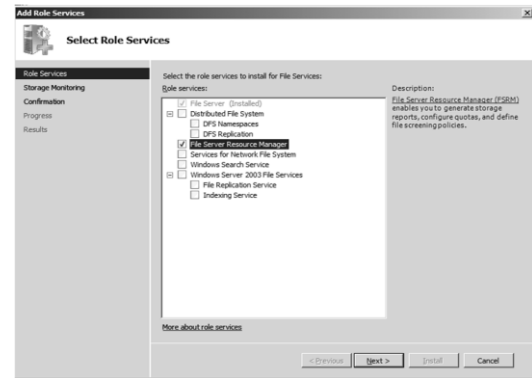
File server is a computer on a network that is used to provide users on a network with access to files.

How to install File Server Role in Windows Server 2008 R2

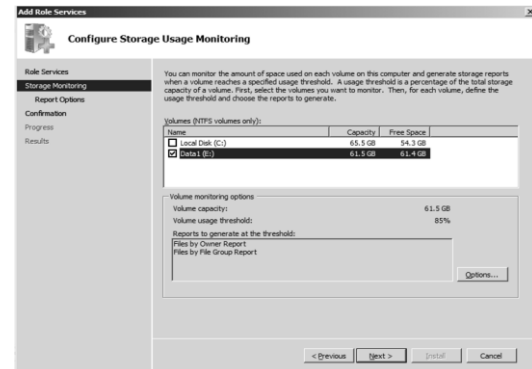
1. Click **Start** button
2. Go to **Administrative Tools**
3. Click **Server Manager**
4. Locate **Roles Summary** then click **Add Roles**
5. Click **Next** Button
6. Check **File Services** in the list of Roles then click **Next** button
7. Click **Next** Button



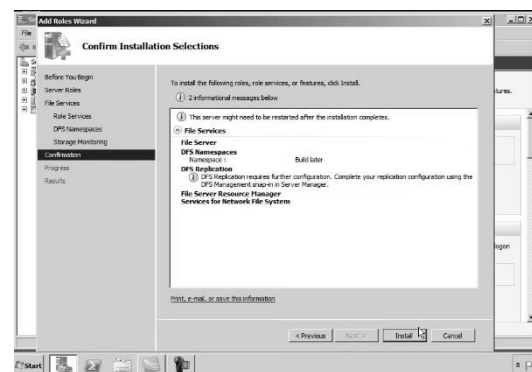
8. Click **Next** Button
9. Check **File Server**
10. Check **File Server Resource Manager**



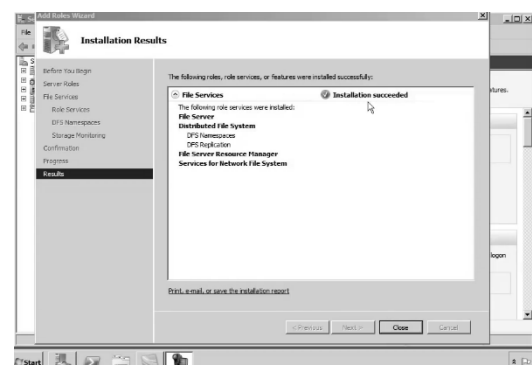
11. Click **Next** Button
12. Check **Local Disk** that you will use then click **Next** button
13. Click **Next** button



14. Click **Install**



15. Click **Close** button

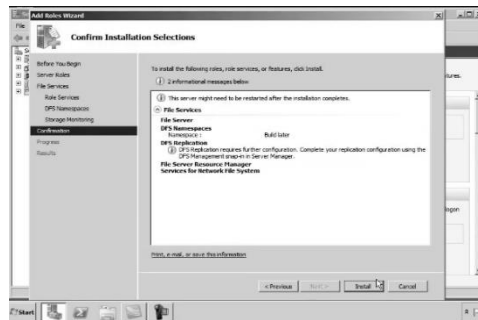




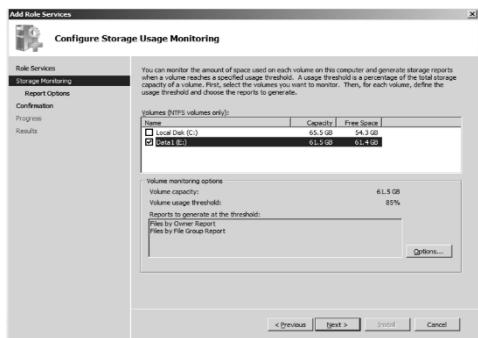
ACTIVITIES

Directions: Label each picture with corresponding step in adding File server role.

A.



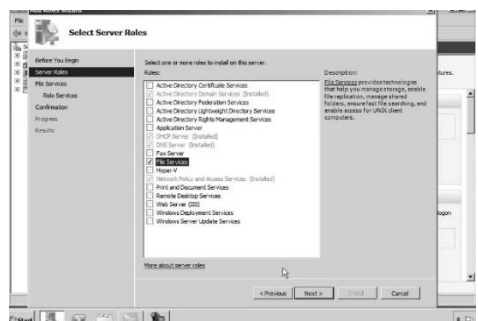
B.



C.



D.



The screenshot shows a window titled "Add Before Wizard" with a sidebar on the left containing icons for File, Add, Edit, and a folder icon. The main content area is titled "Before You Begin" and contains the following text:

This wizard helps you install rules on the server. You determine which rules to install based on the tasks you want the server to perform, such as allowing documents or hosting a Web site.

Before you continue, verify that:

- The administrator account has a strong password.
- Network settings, such as static IP addresses, are configured.
- The latest security updates from Microsoft Update are installed.

If you have to complete any of the preceding steps, cancel the wizard, complete the steps, and then run the wizard again.

To continue, click Next.

At the bottom, there is a checkbox labeled "Skip this page by default" and a set of navigation buttons: "Back" (disabled), "Next" (active), "Cancel", and "Cancel" (disabled).



Directions: Explain and write your answer on the spaces provided for.

-
-
-

-
- This image shows a blank sheet of white paper with horizontal ruling lines. The lines are evenly spaced and run across the width of the page. There are no margins, text, or other markings on the paper.



CHECK YOUR UNDERSTANDING

Directions: Arrange the steps in adding File Server role. (Refer to Activity 1 and use the corresponding letter to each picture)

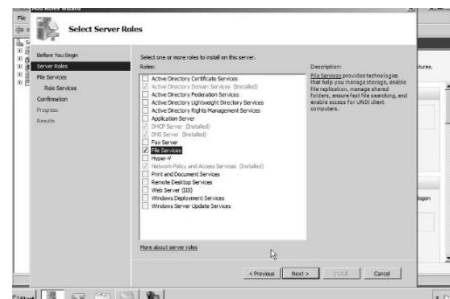
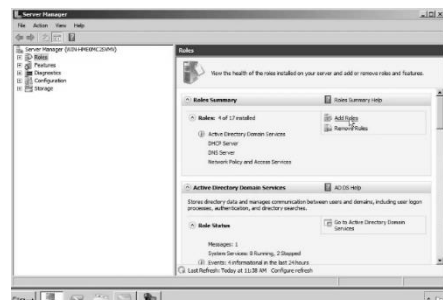
1. _____
2. _____
3. _____
4. _____
5. _____



POST TEST

Directions: Read the following statement carefully. Encircle the letter of the correct answer.

1. Which of the following procedures will that show the given diagram?
 - A. valid> Add scope
 - B. start>Server Manager
 - C. start>Administrative tools
 - D. administrative tools>Server Manager
2. What will you do in order to proceed to the next step?
 - A. click Next > DHCP Server
 - B. roles Summary > add roles
 - C. type Scope Name > starting IP
 - D. click Next > preferred DNS Server
3. The picture shows what particular procedure installing file server?
 - A. file role > click Next
 - B. filename > click Next
 - C. file server > click Next
 - D. file services > click Next



4. It is a computer on a network that is used to provide users on a network with access to files is called_____

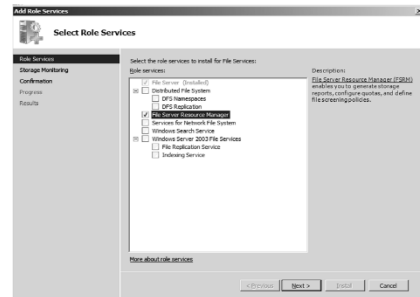
A .DNS Server
B.DHCP Server
C. file Server
D. web Server

5. Administrative tools can be accessed by activating_____

A. close button
B. save button
C. start button
D. restart button

6. What is the best description of the procedure presented in the diagram?

A. check file server > File Server Resource Manager
B. check File Services > File Server Resource Manager
C. check File name > File Server Resource Manager
D. check File > File Server Resource Manager



7. The next page you that will you encounter after the previous step (Question #6) and clicking the next button is _____

A. administrative tools
B. DNS Server
C. file Server
D. local Disk

8. The common storage area used in file server assigned in sharing files and folders is called_____

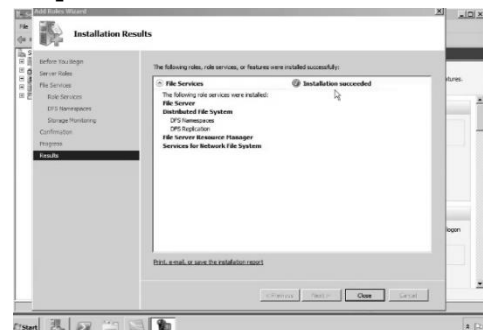
A. local disk A:
B. local disk B:
C. local disk C:
D. local disk D:

9. Which of the following best describes the diagram provided?

A. click install
B. click close
C. click Save
D. click Restart

10. You will check "File Server Resource Manager" after clicking what role?

A. file Service
B. file Server
C. file role
D. file only



<p>Check your understanding</p> <p>1. C 2. E 3. D 4. B 5. A</p> <p>Post Test</p> <p>1. D 2. B 3. D 4. C 5. C 6. B 7. D 8. A 9. B 10. A</p>	<p>Activity</p> <p>A. Click Install B. Check local disk C. Administrative tools and click server manager D. Check file services E. Roles Summary and click roles</p>	<p>ANSWER KEY</p> <p>Pre-test</p> <p>1. C 2. C 3. A 4. A 5. C 6. A 7. B 8. B 9. B 10. D</p> <p>Looking Back</p> <p>1. A 2. B 3. A 4. D 5. D</p>
--	--	---

References

Computer Systems Servicing NCII, Competency Based Learning Material, John Derrick Ramos

<https://www.youtube.com/watch?v=KzQqkS8rzj4> Date retrieved: September 17, 2020

<https://www.youtube.com/watch?v=uJ0yVkCbiXY> Date retrieved: September 17, 2020