

Department of Education

SPTVE

Computer Systems Servicing 10

Remote Desktop

Quarter 2: Week 5 Module



JACINTO SAZ TABIOS JR.

Writer

Gregorio S. Quineri

Validator

Dr. Valentina A. Ballesteros
Quality Assurance Team Chair



Schools Division Office – Muntinlupa City

Student Center for Life Skills Bldg., Centennial Ave., Brgy. Tunasan, Muntinlupa City
(02) 8805-9935 / (02) 8805-9940



EXPECTATIONS

This is the FIFTH content under the Learning Competencies LO2 **CONFIGURE NETWORK SERVICES** of the lesson **SETTING UP COMPUTER SERVERS (SUCS)**. In this topic, you should be able to:

1. understand remote desktop connections;
2. follow the steps in setting up a remote desktop services; and
3. appreciate the steps in adding & enabling remote desktop roles.



PRE-TEST

Directions: Match column A with Column B. Write your answer on the space provided.

COLUMN A

- ___ 1. Remote connection tool of Microsoft Windows that allows a user to view and control the desktop activity of another computer running on a compatible operating system on the network.
- ___ 2. Has the capability to access from a computer to another remote computer at home, at work or other computer's location.
- ___ 3. It is where you can perform any computer task distantly, can manipulate an application instantly, communicate to other computer virtually, and shares data connected to it over the network.
- ___ 4. Administrative tools and server manager roles needed to add and enabled in configuring a remote connection.
- ___ 5. These are the two (2) computers required in order to establish a remoteconnection.
- ___ 6. Used to connect from one computer to a remote desktop.
- ___ 7. It is where you can open the remote desktop.
- ___ 8. It is where you can add a remote desktop connection.
- ___ 9. Reason in selecting "Allow connections from computers any versions of Remote Desktop" on the process of enabling a remote desktop.
- ___ 10. The name of TAB to click under System Protection in enabling a remote desktop.

COLUMN B

- A. Remote Desktop Protocol
- B. Remote Desktop Connection
- C. Desktop
- D. Remote Desktop Services
- E. Client &Server Address
- F. Computer
- G. Start button
- H. Administrative tools or Server Manager
- I. Less secure
- J. Remote
- K. Administrator



LOOKING BACK

Directions: Read each statement carefully and encircle the letter of the correct answer.

1. What will be the previous step before the diagram appears ?

A. check names > click ok
B. check names > click yes
C. check name > click yes
D. check name > click ok

2. What step best describes encircled number 6 on the picture?

A. click assigned tab
B. click permission tab
C. click full control
D. click full control and apply

3. This encircled number on the picture that will share the particular folder to the network?

A. 1
B. 2
C. 3
D. 4

4. What will you do in order to activate this tab (picture)?

A. right click local disk d and then click save
B. right click folder and then choose properties
C. right click everyone and then choose ok
D. right click share this folder and then choose ok

5. The next tab that you will see after this step (picture shown) if you click ok?

A. add button
B. save button
C. start button
D. restart button

6. A type of access level that the users can edit and rename files is called _____.

A. checking names
B. checking permissions
C. read
D. write

7. The folder name that you can use to assigned to the shared folder on the network is _____

A. accomodation
B. direction
C. redirection
D. validation

8. The user can run a specific program is one characteristics of the user level access called _____.

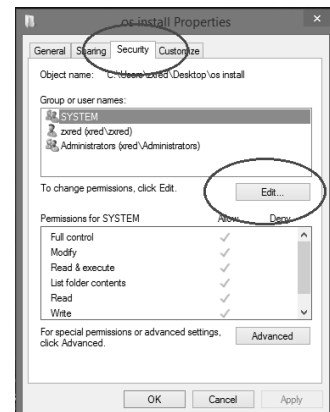
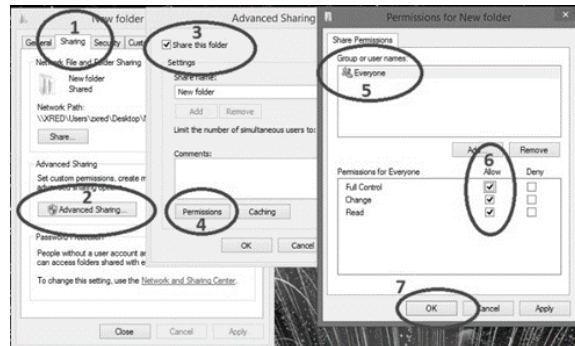
A. access rights
B. execute
C. read
D. write

9. Access rights is also called _____?

A. permissions
B. read
C. username
D. write

10. What local disk can you share to the network if you are the network administrator?

A. local disk A
B. local disk B
C. local disk C
D. local disk D





BRIEF INTRODUCTION

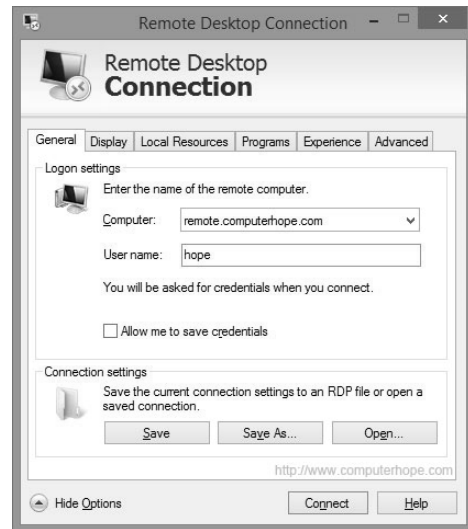
Remote Desktop Protocol is a remote connection tool of Microsoft Windows that allows a user to view and control the desktop activity of another computer running on a compatible operating system on the network.

Remote Desktop Connection has the capability to access from a computer to another remote computer at home, at work or other computer's location. A user can perform any computer task distantly, can manipulate an application instantly, communicate to other computer virtually, and shares data connected to it on its desktop.

The keyboard and mouse of a system unit are unrestricted and can be used to access other desktop computer easily, view its desktop display as if you are in front of the remote computer.

It is very significant to add and enable a remote desktop role and services from the administrative tools of the server computer and configure the remote desktop connection of other computer. This will mean that we need at least two computer systems (client & server) to be able to establish remote desktop connections over a network.

To open a Remote Desktop, click the Start button, type remote desktop, and click on Remote Desktop Connection. From there on, type the computer address of the other computer and its needed user in order to establish a remote connection.



ACTIVITIES

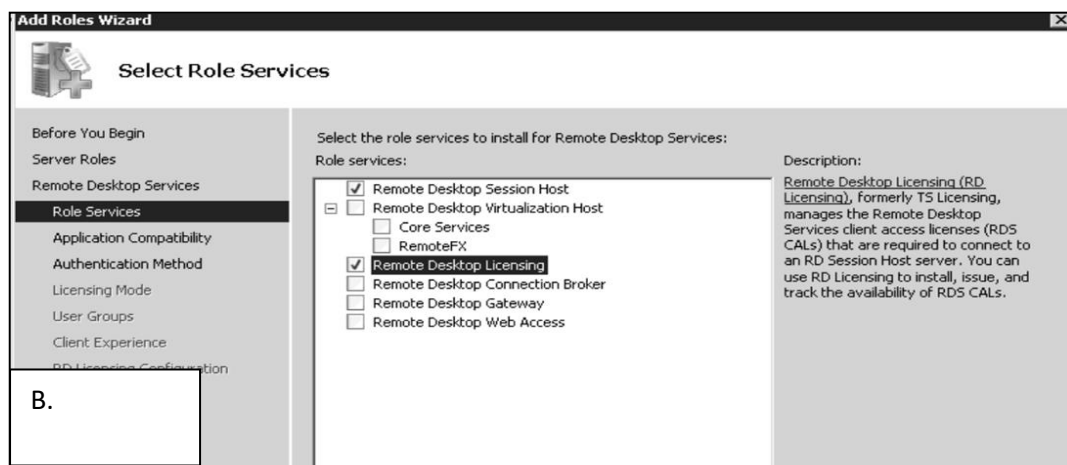
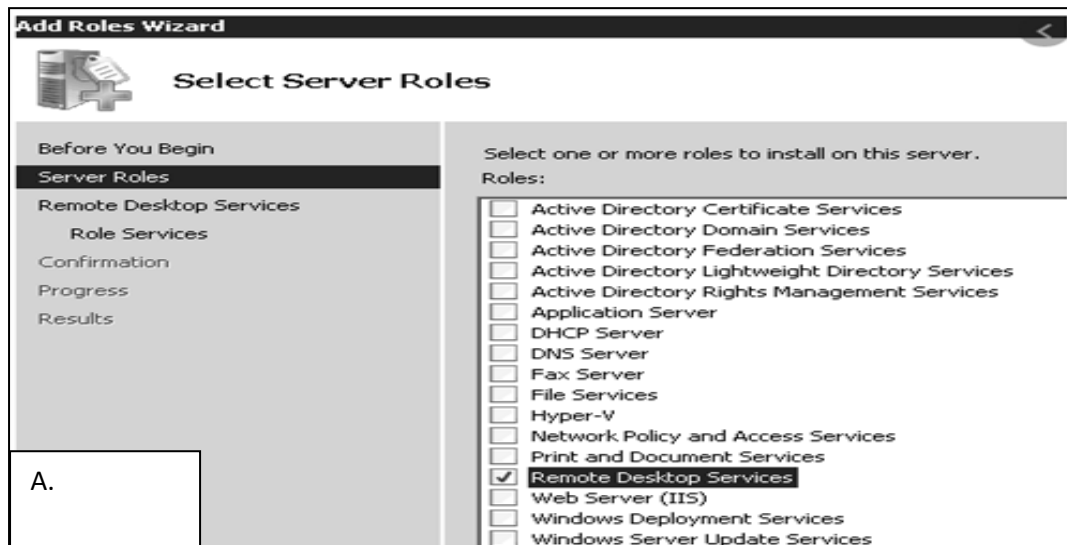
A- Directions: Given the following steps on **how to install remote desktop services**, study the picture and identify its steps. Write the order of step as your answer in the box found on each picture.

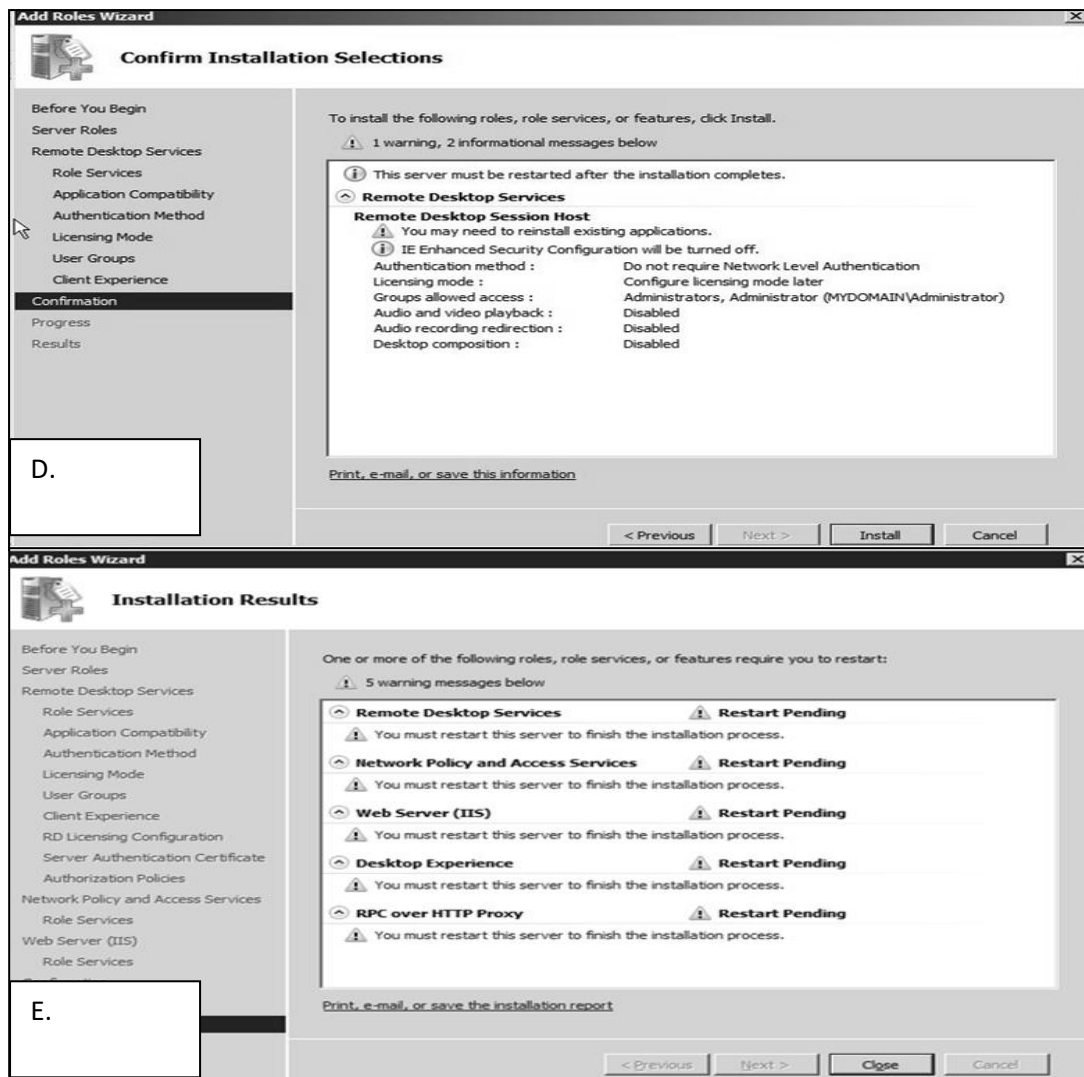
Steps:

1. Go to Administrative Tools
2. Click Server Manager
3. Click Add Roles from Roles Summary, then click Next Button
4. Tick Remote Desktop Services, click Next, and another Next button
5. Tick Remote Desktop Session host then click Next button
6. Click Install Remote Desktop Session Host Anyway, click Next, and another Next Button

7. Tick "Make sure do not require Network Level Authentication" then click Next button.
8. Choose Configure later then click Next Button, then Next, and another Next button
9. Click Install button
10. Click Close and Restart the server computer.

Pictures:



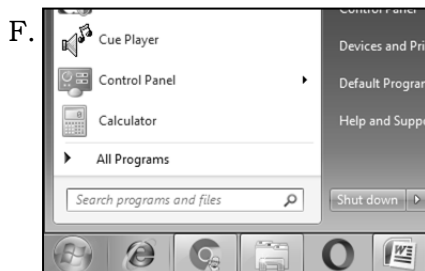


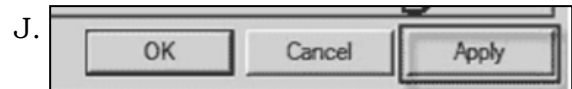
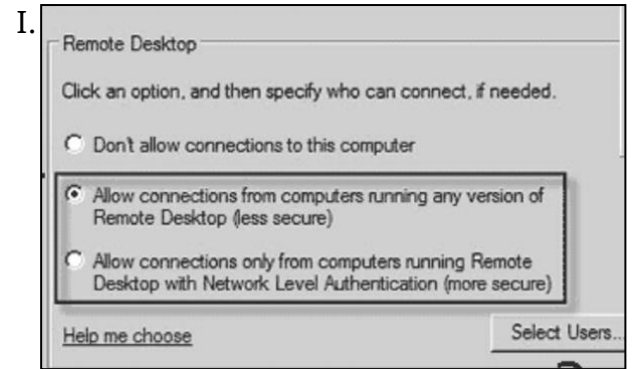
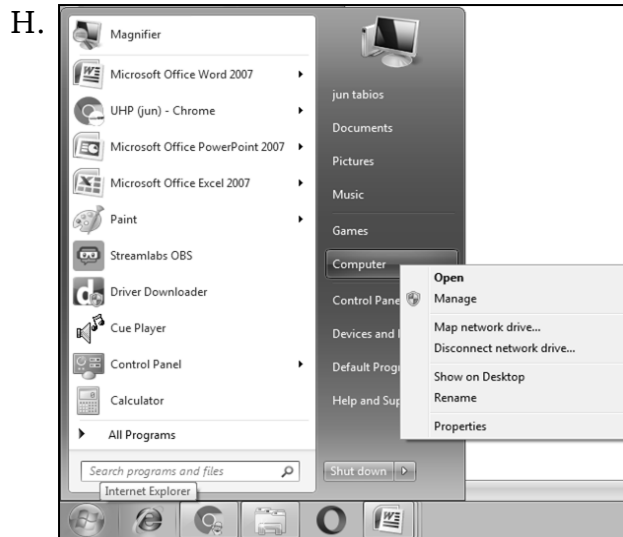
B. Directions: Given the following steps on **how to enable remote desktop of the server**, study the picture and identify its corresponding steps. Write the number step on each picture as the answer.

Steps:

1. Click **Start**
2. Right click **Computer** then choose **Properties**
3. In the **left side**, click **System Protection**
4. Click **Remote tab**
5. Select **Allow connections from computers any versions of Remote Desktop (it is less secure)**
6. Click **Apply** and **OK**

Pictures:





REMEMBER

Directions: Rearrange the following steps in their proper order. Write a number on the space provided for to indicate the order of precedence.

A. Remote Desktop Services:

- ___ 1. Go to Administrative Tools
- ___ 2. Click Server Manager
- ___ 3. Click Add Roles from Roles Summary, then click Next Button
- ___ 4. Tick Remote Desktop Services, click Next, and another Next button
- ___ 5. Tick Remote Desktop Session host then click Next button
- ___ 6. Click Install Remote Desktop Session Host Anyway, click Next, and another Next Button
- ___ 7. Tick "Make sure do not require Network Level Authentication" then click Next button.
- ___ 8. Choose Configure later then click Next Button, then Next, and another Next button
- ___ 9. Click Install button
- ___ 10. Click Close and Restart the server computer.

B. Enable Remote Desktop Services:

- ___ 11. Select Allow connections from computers any versions of Remote Desktop (less secure)
- ___ 12. Click Apply and OK
- ___ 13. Right click Computer then choose Properties
- ___ 14. In the left side, click System Protection
- ___ 15. Click Remote tab



CHECK YOUR UNDERSTANDING

This part presents an activity that will allow you to transfer the knowledge/skills/attitude you gained or learned into real-life concerns/situations.

Directions: Match the following **steps** that will best describe to the **pictures** below. Write your answer on the space provided for before each number.

Steps:

- ___ 1. Adding a server role
- ___ 2. Install the remote desktop connection
- ___ 3. Select Allow connections from computers any versions of Remote Desktop
- ___ 4. Right click Computer, then propriertirs
- ___ 5. Click Remote settings.
- ___ 6. Tick remote desktop services

Pictures:

A.



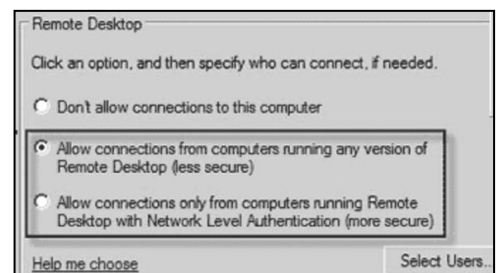
B.



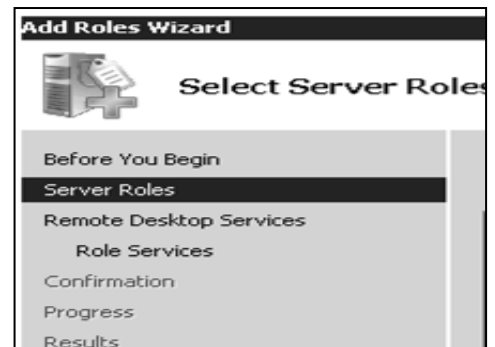
C.



D.



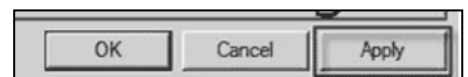
E.



F.



G.





POST TEST

Directions: Match column A with Column B. Write your answer on the space provided for each number.

COLUMN A

- ___ 1. Used to connect from one computer to a remote desktop.
- ___ 2. It is where you can open the remote desktop.
- ___ 3. It is where you can add a remote desktop connection.
- ___ 4. Reason in selecting “Allow connections from computers any versions of Remote Desktop” on the process of enabling a remote desktop.
- ___ 5. The name of TAB to click under System Protection in enabling a remote desktop.
- ___ 6. Remote connection tool of Microsoft Windows that allows a user to view and control the desktop activity of another computer running on a compatible operating system on the network.
- ___ 7. Has the capability to access from a computer to another remote computer at home, at work or other computer’s location.
- ___ 8. It is where you can perform any computer task distantly, can manipulate an application instantly, communicate to other computer virtually, and shares data connected to it over the network.
- ___ 9. Administrative tools and server manager roles needed to add and enabled in configuring a remote connection.
- ___ 10. These are the two (2) computers required in order to establish a remoteconnection.

COLUMN B

- | |
|---|
| A. Remote Desktop Protocol |
| B. Remote Desktop Connection |
| C. Desktop |
| D. Remote Desktop Services |
| E. Client &Server |
| F. Computer Address |
| G. Start button |
| H. Administrative tools or Server Manager |
| I. Less secure |
| J. Remote |
| K. Administrator |

Answer Key

PRETEST					POST TEST
	Looking Back		REMEMBER		
1. A	1. A		A	1. F	
1. B	2. D		1. 1	1. G	
2. C	3. C		2. 2	2. H	
3. D	4. B		3. 3	3. I	
4. E	5. A		4. 4	4. J	
5. F	6. D		5. 5	5. A	
6. G	7. C		6. 6	6. B	
7. H	8. B		7. 7	7. C	
8. I	9. A		8. 8	8. D	
9. J	10. D		9. 9	9. E	
ACTIVITIES			10. 10		
A			B		
A. 4			11. 4		
B. 5			12. 5		
C. 7		CHECK YOUR UNDERSTANDING	13. 1		
D. 9	1. E		14. 2		
E. 10	2. F		15. 3		
	3. D				
B	4. A				
F. 4	5. B				
G. 5	6. C				
H. 1					
I. 2					
J. 3					

References

<https://www.digitalcitizen.life/simple-questions-what-are-remote-desktop-connections>

Date retrieved: September 7, 2020

<https://www.slideshare.net/kenjifritz/css-module-7-connect-to-another-computer-using-remote-desktop-connection> Date retrieved: September 7, 2020