

**Department of Education**

**SPTVE**

**COMPUTER SYSTEMS SERVICING 10**

**PORT FORWARDING & ACCESSING**

**REMOTE DESKTOP**

**Quarter 2: Week 6 Module**



JACINTO SAZ TABIOS JR.

*Writer*

Gregorio S. Quineri

*Validator*

Dr. Valentina A. Ballesteros  
*Quality Assurance Team Chair*



**Schools Division Office – Muntinlupa City**

Student Center for Life Skills Bldg., Centennial Ave., Brgy. Tunasan, Muntinlupa City  
(02) 8805-9935 / (02) 8805-9940



## EXPECTATIONS

This is the SIXTH content under the Learning Competencies **LO2 CONFIGURE NETWORK SERVICES** of the lesson **SETTING UP COMPUTER SERVERS (SUCS)**. In this topic content, you should be able to:

1. understand port forwarding;
2. follow the steps in accessing a remote desktop computer; and
3. appreciate the procedural steps for port forwarding.



## PRE-TEST

Before we start the lesson content on this module, you will need to answer the questions below in order to recognize your prior learning and competencies

**Directions:** Identify a word that best described in each sentence. Write your answer on the space provided.

1. A point to which a computer, a process, a service, or an application connects.  
A. admin  
B. forwarding  
C. port  
D. router
2. A default port number of Remote Desktop Protocol.  
A. 3389  
B. 3387  
C. 3386  
D. 3385
3. The port number use by HTTP in requesting a remote web server.  
A. 79  
B. 80  
C. 81  
D. 82
4. The port number use by HTTPS in requesting a remote web server.  
A. 443  
B. 445  
C. 446  
D. 447
5. It is needed in order to communicate between computers that are connected together on a network behind a router.  
A. ip address  
B. internet address  
C. home address  
D. mac address
6. A web-based panel that can be accessed through a browser's address bar.  
A. admin  
B. forwarding  
C. port  
D. router

7. It is the most used IP address of a router.
 

A. 192.168.1.0	C. 192.168.1.2
B. 192.168.1.1	D. 192.168.1.3
  
8. The common default password and user name of a router.
 

A. 12345	C. abc123
B. abcde	D. admin
  
9. A peer-to-peer connection using a remote desktop client and directs its access to the host as if you're using the PC by itself.
 

A. port	C. port forwarding
B. forwarding	D. port backrwarding
  
10. It is used to open the router's web panel.
 

A. explorer	C. google
B. browser	D. opera



## LOOKING BACK

Previously, you have been acquired knowledge, skills, and attitude gained from the preceding lesson about remote desktop protocol and service roles. Please answer the questions below as part of the continuing process in the attainment of further competencies.

**Directions:** Rearrange the following steps in their proper order. Write a numbers on the space provided for, to indicate the order of precedence.

### A. Remote Desktop Services:

- \_\_\_\_\_ 1. Go to Administrative Tools
- \_\_\_\_\_ 2. Click Server Manager
- \_\_\_\_\_ 3. Click Add Roles from Roles Summary, then click Next Button
- \_\_\_\_\_ 4. Tick Remote Desktop Services, click Next, and another Next button
- \_\_\_\_\_ 5. Tick Remote Desktop Session host then click Next button
- \_\_\_\_\_ 6. Click Install Remote Desktop Session Host Anyway, click Next, and another Next Button
- \_\_\_\_\_ 7. Tick "Make sure do not require Network Level Authentication" then click Next button.
- \_\_\_\_\_ 8. Choose Configure later then click Next Button, then Next, and another Next button
- \_\_\_\_\_ 9. Click Install button
- \_\_\_\_\_ 10. Click Close and Restart the server computer.

### B. Enable Remote Desktop Services:

- \_\_\_\_\_ 11. Select Allow connections from computers any versions of Remote Desktop (less secure)
- \_\_\_\_\_ 12. Click Apply and OK

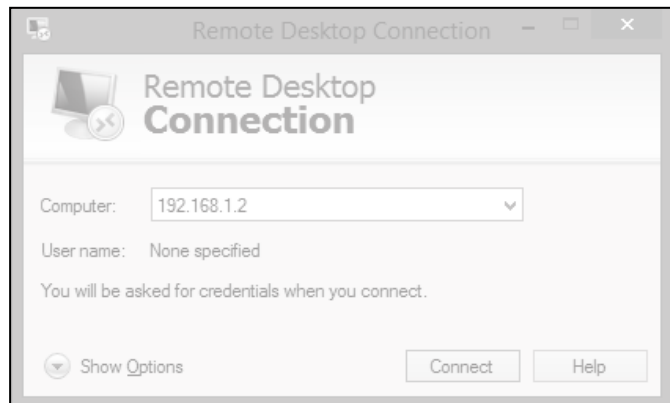
- \_\_\_\_\_ 13. Right click Computer then choose Properties
- \_\_\_\_\_ 14. In the left side, click System Protection
- \_\_\_\_\_ 15. Click Remote tab



## BRIEF INTRODUCTION

A port is a point to which a computer, a process, a service, or an application connects.

By default, Remote Desktop Protocol program uses port 3389. And every time you access a website, you are actually requesting a remote web server using port 443 and 80 for HTTPS/HTTP protocol respectively.



An IP address is needed in order to communicate between computers that are connected together on a network behind a router. To connect to the PC using a remote desktop port forwarding protocol, log in to the router, change its settings forwarding port to 3389, and enter the IP address of the PC in the router.

A router has a web-based panel that can be accessed through a browser's address bar. In most cases, a router's IP address is 192.168.1.1 with a user name (admin) and password (admin)

Remote desktop port forwarding is a peer-to-peer connection using a remote desktop client and directs its access to the host as if you're using the PC by itself.



## ACTIVITIES

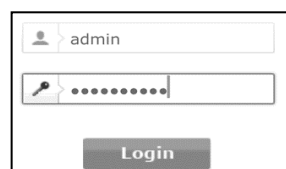
**A - Directions:** Given the following steps on **how to Port-Forwarding Remote Desktop Port 3389 in Router (Server)**, study the pictures and match its corresponding steps. Write the letter of the picture on the space provided found in the order of steps.

Steps:

Pictures:

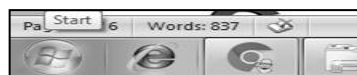
- \_\_\_ 1. Open web browser (IE, Opera, Google Chrome, Firefox)

A

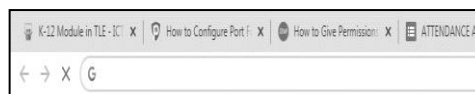


- \_\_\_ 2. In the address bar type the IP address of the router (Ex. 192.168.1.1 or 192.168.0.1)
- \_\_\_ 3. Type the router administrator username and password (Ex. admin, admin)
- \_\_\_ 4. In the router's configuration screen, look for a place to turn on port forwarding (port mapping)
- \_\_\_ 5. Forward TCP port 3389, the default port for Remote Desktop connection and then click Save Settings

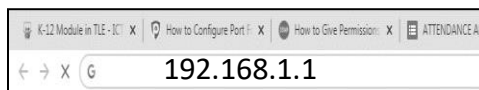
B.



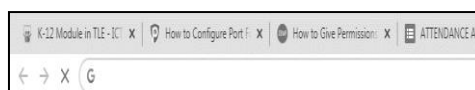
C.



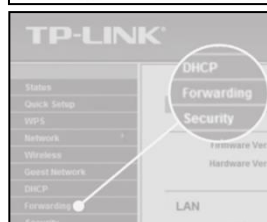
D.



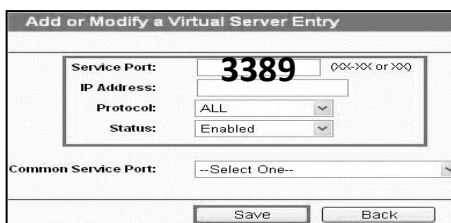
E.



F.



G.



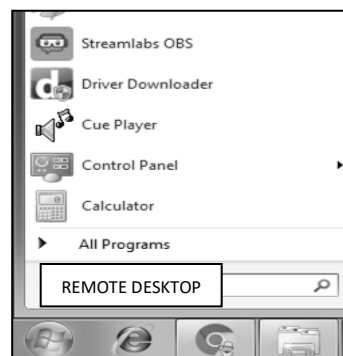
**B - Directions:** Given the following steps on **how to Access Remote Desktop**, study the pictures and match its corresponding steps. Write the letter of the picture on the space provided found in the order of steps.

Steps:

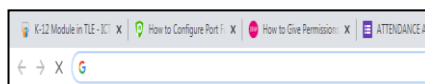
- \_\_\_ 1. Click Start
- \_\_\_ 2. In the search box type: Remote Desktop
- \_\_\_ 3. In the search results, click Remote Desktop Connection
- \_\_\_ 4. Type the IP address of the server or computer you want to connect (Ex. 192.168.1.2)

Pictures:

A.



B.

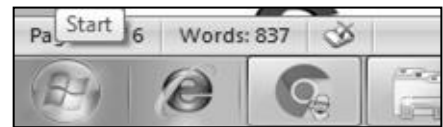


C.

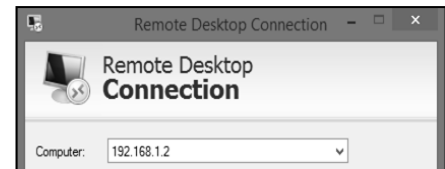


\_\_\_ 5. Click Connect or press Enter key.

D.

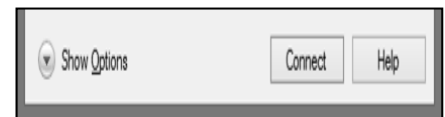


E.



192.168.1.2

F.



### REMEMBER

You have now learned the ideas from this lesson content on how to forward-port and accessing a remote desktop by following its procedural steps.

**A - Directions:** Read each statement carefully and encircle the letter of your best answer.

1. A point to which a computer, a process, a service, or an application connects.
 

A. port	C. program
B. processor	D. protocol
2. The default port number of Remote Desktop Protocol.
 

A. 3386	C. 3388
B. 3387	D. 3389
3. A port number use by HTTP in requesting a remote web server.
 

A. 79	C. 81
B. 80	D. 82
4. It is needed in order to communicate between computers that are connected together on a network behind a router.
 

A. home address	C. Link address
B. IP address	D. MAC address
5. A peer-to-peer connection using a remote desktop client and directs its access to the host as if you're using the PC by itself.
 

A. remote control	C. remote desktop connection
B. remote protocol	D. Remote desktop port forwarding

**B - Directions:** Rearrange the following steps in their proper order. Write a number on the space provided for to indicate the order of precedence.

**I – Port-Forwarding Remote Desktop Connections:**

- \_\_\_\_\_ A. Forward TCP port 3389, the default port for Remote Desktop connection and then click Save Settings
- \_\_\_\_\_ B. Open web browser (IE, Opera, Google Chrome, Firefox)
- \_\_\_\_\_ C. In the address bar type the IP address of the router (Ex. 192.168.1.1 or 192.168.0.1)
- \_\_\_\_\_ D. Type the router administrator username and password (Ex. admin, admin)
- \_\_\_\_\_ E. In the router's configuration screen, look for a place to turn on port forwarding (port mapping) like in the image below.

**II - Access Remote Desktop:**

- \_\_\_\_\_ F. Type the IP address of the server or computer you want to connect (Ex. 192.168.1.2)
- \_\_\_\_\_ G. Click Connect or press Enter key.
- \_\_\_\_\_ H. Click Start
- \_\_\_\_\_ I. In the search box type: Remote Desktop
- \_\_\_\_\_ J. In the search results, click Remote Desktop Connection



**CHECK YOUR  
UNDERSTANDING**

This part presents an activity that will allow you to transfer the knowledge/skills/attitude you gained or learned into real-life concerns/situations.

**Directions:** Match the following **steps** that will best describe to the **pictures** below.

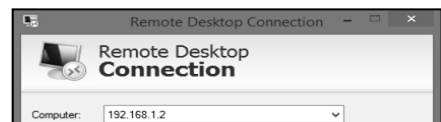
Write your answer on the space provided.

Steps:

- \_\_\_ 1. Click Start
- \_\_\_ 2. In the search box type: Remote Desktop
- \_\_\_ 3. In the search results, click Remote Desktop Connection

Pictures:

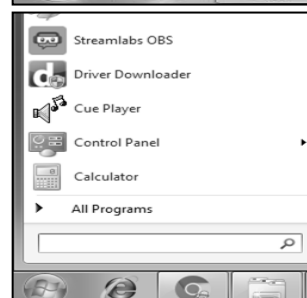
A



B

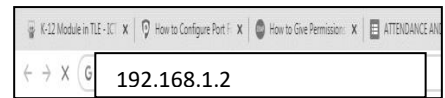


C



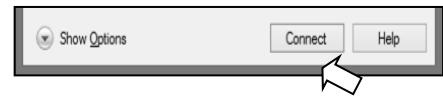
\_\_\_ 4. Type the IP address 192.168.1.2 on the browser's address bar.

D



\_\_\_ 5. Click Connect or press Enter key.

E



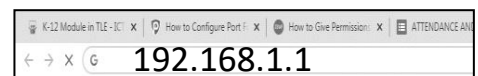
\_\_\_ 6. Open web browser (IE, Opera, Google Chrome, Firefox)

F



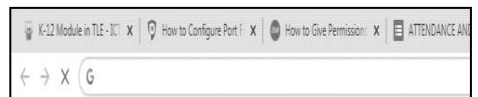
\_\_\_ 7. In the address bar type the IP address of the router (Ex. 192.168.1.1 or 192.168.0.1)

G



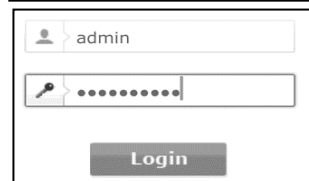
\_\_\_ 8. Type the router administrator username and password (Ex. admin, admin)

H



\_\_\_ 9. In the router's configuration screen, look for a place to turn on port forwarding (port mapping)

I

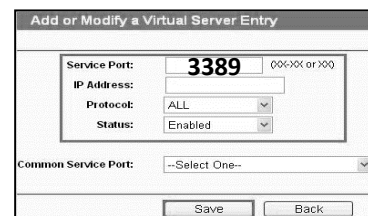


\_\_\_ 10. Forward TCP port 3389, the default port for Remote Desktop connection and then click Save Settings

J



K





## POST TEST

**Directions:** Identify a word that best describes in each sentence. Write your answer on the space provided.

1. A web-based panel that can be accessed through a browser's address bar.  
A. admin  
B. forwarding  
C. port  
D. router
2. Most IP address of a router.  
A. 192.168.1.0  
B. 192.168.1.1  
C. 192.168.1.2  
D. 192.168.1.3
3. The common default password and user name of a router.  
A. 12345  
B. abcde  
C. abc123  
D. admin
4. A peer-to-peer connection using a remote desktop client and directs its access to the host as if you're using the PC by itself.  
A. port  
B. forwarding  
C. port forwarding  
D. port backwarding
5. It is used to open the router's web panel.  
A. explorer  
B. browser  
C. google  
D. opera
6. A point to which a computer, a process, a service, or an application connects.  
A. admin  
B. forwarding  
C. port  
D. router
7. The default port number of Remote Desktop Protocol.  
A. 3389  
B. 3387  
C. 3386  
D. 3385
8. A port number use by HTTP in requesting a remote web server.  
A. 79  
B. 80  
C. 81  
D. 82
9. The port number use by HTTPS in requesting a remote web server.  
A. 443  
B. 445  
C. 446  
D. 447
10. It is needed in order to communicate between computers that are connected together on a network behind a router.  
A. ip address  
B. internet address  
C. home address  
D. mac address

## Answer Key:

PRE TEST	LOOKING BACK	ACTIVITIES	REMEMBER	CHECK YOUR UNDERSTANDING	POST TEST
1. C 2. A 3. B 4. A 5. A 6. D 7. B 8. D 9. D 10. B	A 1. 6 2. 7 3. 8 4. 9 5. 10 6. 1 7. 2 8. 3 9. 4 10. 5  B 11. 1 12. 2 13. 3 14. 4 15. 5	A 1. C 2. D 3. A 4. F 5. G  B 1. D 2. A 3. C 4. E 5. F	A 1. A 2. D 3. B 4. B 5. D  B-I A. 5 B. 1 C. 2 D. 3 E. 4  B-II F. 4 G. 5 H. 1 I. 2 J. 3	1. B 2. C 3. F 4. D 5. E 6. H 7. G 8. I 9. K 10. K	1. D 2. B 3. D 4. D 5. B 6. C 7. A 8. B 9. A 10. A

## References

<https://www.purevpn.com/blog/how-to-configure-port-forwarding-for-remote-desktop-port/>

Date retrieved: September 9, 2020