

Department of Education

SPTVE

COMPUTER SYSTEMS SERVICING 10

PRINTER SERVER

Quarter 2: Week 7 Module



JACINTO SAZ TABIOS JR.
Writer


Gregorio S. Quineri
Validator

Dr. Valentina A. Ballesteros
Quality Assurance Team Chair



Schools Division Office – Muntinlupa City

Student Center for Life Skills Bldg., Centennial Ave., Brgy. Tunasan, Muntinlupa City
(02) 8805-9935 / (02) 8805-9940



EXPECTATIONS

This is the SEVENTH Content under the Learning Competencies **LO2 CONFIGURE NETWORK SERVICES of the lesson SETTING UP COMPUTER SERVERS (SUCS)**. In this topic, you should be able to:

1. understand printer server;
2. follow the procedural steps involving printer server; and
3. appreciate the procedural steps in setting up a printer server.



PRE-TEST

Before we start the lesson content on this module, you will need to answer the questions below in order to recognize your prior learning and competencies.

Directions: Read each statement carefully and encircle the letter of your best answer.

1. A very important task in the process of computing that will translate a soft copy, machine readable to a hard, touchable printed document on a paper.
A. photocopying
B. printing
C. scanning
D. texting
2. An output peripheral hardware device used to transform an electronic data into a text, images, or both on a document.
A. digital Camera
B. fax Machine
C. scanner
D. printer
3. Type of server that connects a printer to a client computers over a network and accepts print jobs from the computers, and send the jobs to the appropriate printers.
A. printing
B. printing role
C. printer server
D. printer services
4. It is used to enable the Print Management tool in managing shared printers and can track printing events using the Event Viewer.
A role
B. service
C. print service
D. print service role
5. A printer configuration that is connected to the computer itself.
A. local printer
B. printer service
C. print services
D. shared printer

6. Printer configuration that is being used by another computer over the network.

A. local printer	C. printer service
B. printer service	D. shared printer

7. A program to be installed in order to utilized the hardware device by the computer system.

A. application	C. device Driver
B. code	D. program

8. This will make a printer print automatically once being shared.

A. print server	C. print service
B. printing server	D. printing service

9. This panel is used in adding printer device hardware.

A. back panel	C. front panel
B. control panel	D. patch panel

10. A server roles use to add a printer service.

A. print services	C. print server
B. Print role	D. print



LOOKING BACK

Previously, you have been acquired knowledge, skills, and attitude gained from the preceding lesson about port forwarding and accessing remote desktop connections. Please answer the questions below as part of the continuing process in the attainment of further competencies.

A - Directions: Read each statement carefully and encircle the letter of your best answer.

1. Point to which a computer, a process, a service, or an application connects.

A. port	C. program
B. processor	D. protocol

2. Default port number of Remote Desktop Protocol.

A. 3386	C. 3388
B. 3387	D. 3389

3. Port number use by HTTP in requesting a remote web server.

A. 79	C. 81
B. 80	D. 82

4. Needed in order to communicate between computers that are connected together on a network behind a router.

A. home address	C. link address
B. IP address	D. MAC address

5. A peer-to-peer connection using a remote desktop client and directs its access to the host as if you're using the PC by itself.
- A. remote control
 - B. remote protocol
 - C. remote desktop connection
 - D. remote desktop port forwarding



BRIEF INTRODUCTION

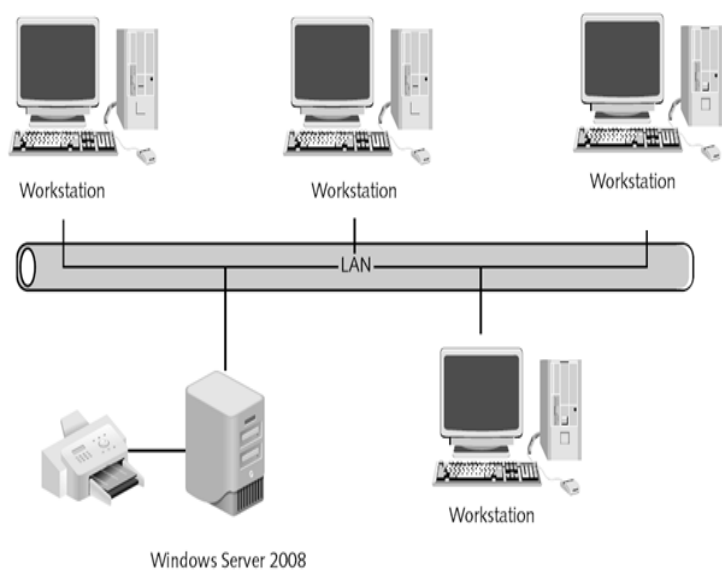
Printing is a very important task in the process of computing that will translate a soft copy, machine readable to a hard, touchable printed document on a paper. A Printer is an output peripheral hardware device use to transform an electronic data into a text, images, or both on a document.

According to Wikipedia, a Printer Server is a type of server that connects printers to client computers over a network. It accepts print jobs from the computers and sends the jobs to the appropriate printers, queuing the jobs locally to accommodate the fact that work may arrive more quickly than the printer can actually handle.

In Microsoft Windows Server 2008, a Print Service Role is used to enable the Print Management tool in managing shared printers and can track printing events using the Event Viewer.

Windows Server can automatically detect and install new hardware. If the printer device program is not being recognized, installing a printer with its device driver should be done in order to properly install the printer device hardware.

Sharing a local printer attached to a Server PC will become and enables a print server automatically.





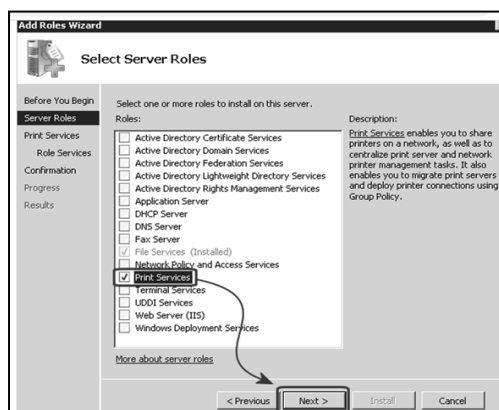
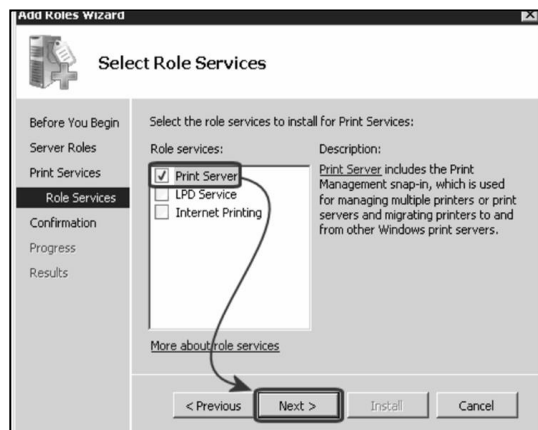
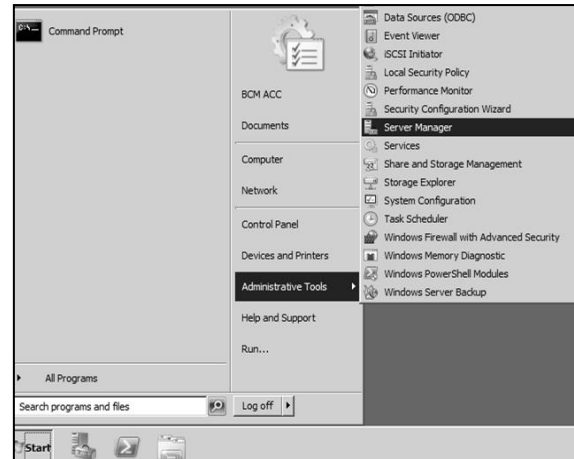
ACTIVITIES

A - Directions: Given the following steps on **How To Add A Printer Server Roles**, study the pictures and match its corresponding steps. Write the letter of the picture on the space provided found in the order of steps.

Steps:

- _____ 1. From the Start, open the Server Manager.
- _____ 2. Right click Roles and then click Add Roles
- _____ 3. Tick Print Services from the Server Roles and then click Next.
- _____ 4. Tick Print Server from the Role Services and then click Next.
- _____ 5. Click Install to confirm the Printer Server.

Pictures:

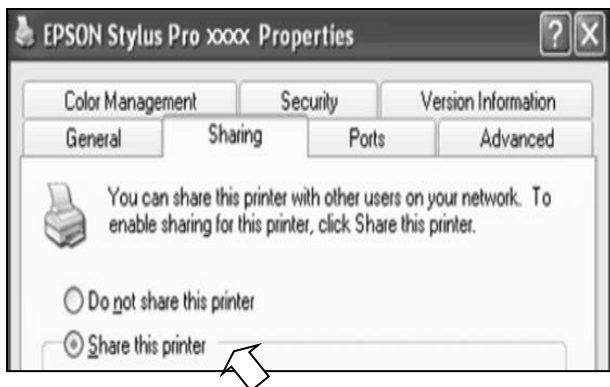
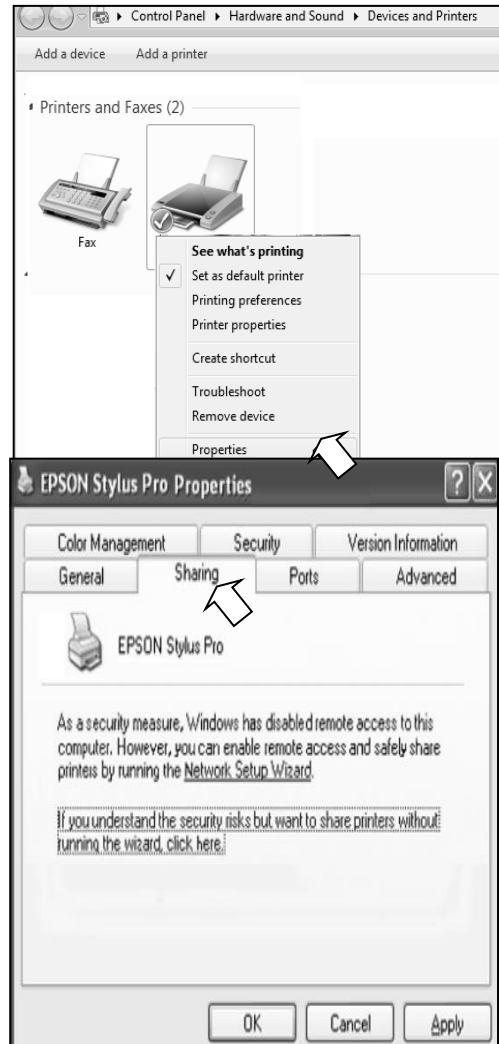


B - Directions: Given the following steps on **Sharing A Local Printer Server**, study the pictures and match its corresponding steps. Write the letter of the picture on the space provided found in the order of steps.

Steps:

- _____ 6. On the Device and Printer, right-click the installed printer to share and choose Printer Properties
- _____ 7. On the opened box click Sharing tab.
- _____ 8. Choose Share this printer option to allow the printer to be shared on the network.
- _____ 9. Use the default shared name of the printer In Share Name field.
- _____ 10. Click OK button to share the printer.

Pictures:



REMEMBER



You have now learned the ideas from this lesson content if what is a printer server and its procedural steps on how to configure a print server roles.

A - Directions: Rearrange the following steps according to their proper order.
Write a number on the space provided for to indicate the order of precedence.

I – Add Printer Server Roles:

- _____ 1. Tick Print Services from the Server Roles and then click Next.
- _____ 2. Tick Print Server from the Role Services and then click Next.
- _____ 3. Click Install to confirm the Printer Server.
- _____ 4. From the Start, open the Server Manager.
- _____ 5. Right click Roles and then click Add Roles

II – Sharing A Printer:

- _____ 6. On the Device and Printer, right-click the installed printer to share and choose Printer Properties
- _____ 7. On the opened box click Sharing tab.
- _____ 8. Choose Share this printer option to allow the printer to be shared on the network.
- _____ 9. Use the default shared name of the printer In Share Name field.
- _____ 10. Click OK button to share the printer.

B - Directions: Read each statement carefully and encircle the letter of your best answer.

- _____ 11. A very important task in the process of computing that will translate a soft copy, machine readable to a hard, touchable printed document on a paper.
- _____ 12. An output peripheral hardware device use to transform an electronic data into a text, images, or both on a document.
- _____ 13. Type of server that connects a printer to client computers over a network and accepts print jobs from the computers, and send the jobs to the appropriate printers.
- _____ 14. Use to enable the Print Management tool in managing shared printers and can track printing events using the Event Viewer.
- _____ 15. A printer configuration that is connected to the computer itself.



**CHECK YOUR
UNDERSTANDING**

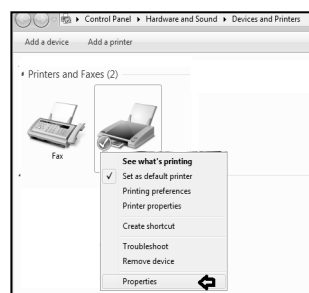
This part presents an activity that will allow you to transfer the knowledge/skills/attitude you gained or learned into real-life concerns/situations.

Directions: Match the following **steps** that will best describe to the **pictures** below. Write your answer on the space provided.

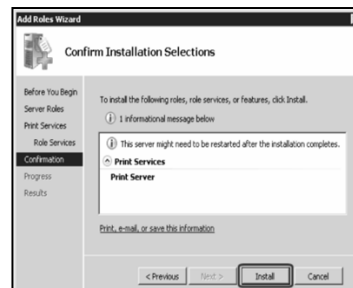
Steps:

- _____ 1. Open the Server Manager.
- _____ 2. Right click Roles and then click Add Roles
- _____ 3. Tick Print Services from the Server Roles and then click Next.
- _____ 4. Tick Print Server from the Role Services and then click Next.
- _____ 5. Click Install to confirm the Printer Server.
- _____ 6. On the Device and Printer, right-click the installed printer to share and choose Printer Properties
- _____ 7. On the opened box click Sharing tab.
- _____ 8. Choose Share this printer option to allow the printer to be shared on the network.
- _____ 9. Use the default shared name of the printer In Share Name field.
- _____ 10. Click SERVER manager from the taskbar.

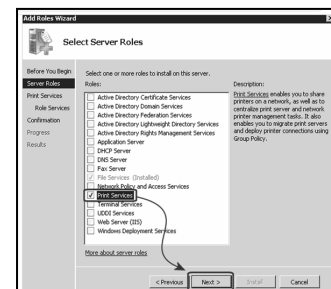
Pictures:



A



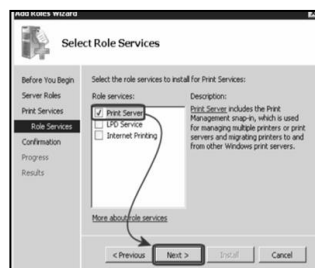
B



C



D



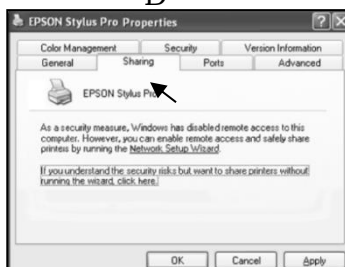
E



F



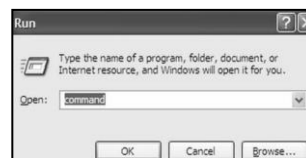
G



H



I



J



K



POST TEST

Directions: Read each statement carefully and encircle the letter of your best answer.

1. Printer configuration that is being used by another computer over the network.
A. local printer
B. printer service
C. printer service
D. shared printer
2. Program to be installed in order to utilized the hardware device by the computer system.
A. application
B. code
C. device Driver
D. program
3. This will make a printer automatically once being shared.
A. print server
B. printing server
C. print service
D. printing service
4. This panel is use in adding printer device hardware.
A. control panel
B. back panel
C. front panel
D. patch panel
5. Server roles use to add a printer service.
A. print services
B. print role
C. print server
D. print
6. A very important task in the process of computing that will translate a soft copy, machine readable to a hard, touchable printed document on a paper.
A. photocopying
B. printing
C. scanning
D. texting
7. An output peripheral hardware device use to transform an electronic data into a text, images, or both on a document.
A. digital Camera
B. fax Machine
C. scanner
D. printer
8. Type of server that connects a printer to a client computers over a network and accepts print jobs from the computers, and send the jobs to the appropriate printers.
A. printing
B. printing role
C. printer server
D. printer services
9. Use to enable the Print Management tool in managing shared printers and can track printing events using the Event Viewer.
A. role
B. service
C. print service
D. print service role
10. A printer configuration that is connected to the computer itself.
A. local printer
B. printer service
C. printer service
D. shared printer

KEY ANSWERS

PRE TEST	LOOKING BACK	ACTIVITIES	REMEMBER	CHECK YOUR UNDERSTANDING	POST TEST
1. B 2. D 3. C 4. D 5. A 6. D 7. C 8. A 9. A 10. A	1. A 2. D 3. B 4. B 5. D	1. A 2. C 3. B 4. D 5. E 6. A 7. B 8. C 9. D 10. E	1. 3 2. 4 3. 5 4. 1 5. 2 6. 1 7. 2 8. 3 9. 4 10. 5	1. K 2. F 3. C 4. E 5. B 6. A 7. H 8. D 9. I 10. K	1. D 2. C 3. A 4. A 5. A 6. B 7. D 8. C 9. D 10. A

Reference

<http://unixwiz.net/techtips/server2008-print-mgmt.html>
Date Retrieved: September 12, 2020