



Republic of the Philippines
Department of Education
National Capital Region
Schools Division Office – Muntinlupa City

SPECIAL PROGRAM IN TECHNICAL VOCATIONAL EDUCATION (SPTVE)
DRESSMAKING 10
Q3-Week-5

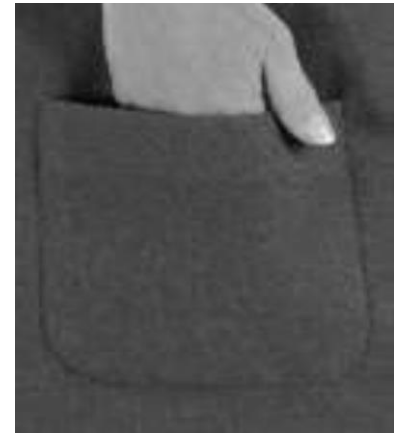
- I. Topic: **How to Make Patch Pocket**
- II. Objectives:
1. determine the steps on how to make a patch pocket.
 2. follow the steps in making a patch pocket.
 3. value the importance of determining the techniques in making patch pockets.
- III. Brief Introduction of the Lesson

A pocket is a small bag or pouch attached to a garment used as a place for money, handkerchiefs, or wallet. Sometimes pockets are used for decoration.

Patch Pocket- attached at the right side of the garment. This is found in blouses, polo shirts, jackets, pants, dresses, and skirts.

Steps on how to Make Patch Pocket

1. Cut 5"x6" size of fabric and mark 3cms top hem and 1cm side seam allowances.
2. Fold top edge 0.5 cm to the wrong side and stitch.
3. Fold down the top edge along with the 3cm allowance to the right side.
4. Stitch along seam allowance or fold line.
5. Trim and turn the top edge on the right side.
6. Fold each side of the pocket.
7. Miter the corners.
8. Position and pin the pocket on the garment.
9. Topstitch the pocket leaving 1/8" allowance from the edge.



IV. Activities:

Activity 1

SEQUENCING

Directions: Arrange the following procedures chronologically by writing the right number based on their proper order.

Steps on how to Make Patch Pocket

- _____ Fold top edge 0.5 cm to the wrong side and stitch.
- _____ Topstitch the pocket leaving 1/8" allowance from the edge.



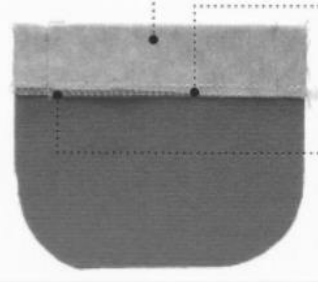
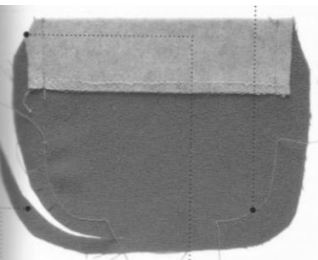
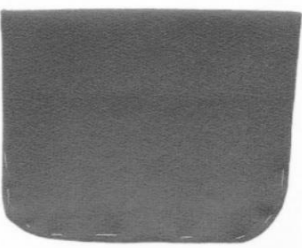
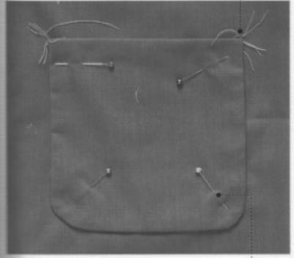


Republic of the Philippines
Department of Education
 National Capital Region
 Schools Division Office – Muntinlupa City

- _____ Fold down the top edge along with the 3cm allowance to the right side.
- _____ Cut 5"x6" size of fabric and mark 3cms top hem and 1cm side seam allowances.
- _____ Miter the corners.
- _____ Stitch along seam allowance or fold line
- _____ Fold each side of the pocket
- _____ Position and pin the pocket on the garment.
- _____ Trim and turn top edge on the right side.

Activity 2

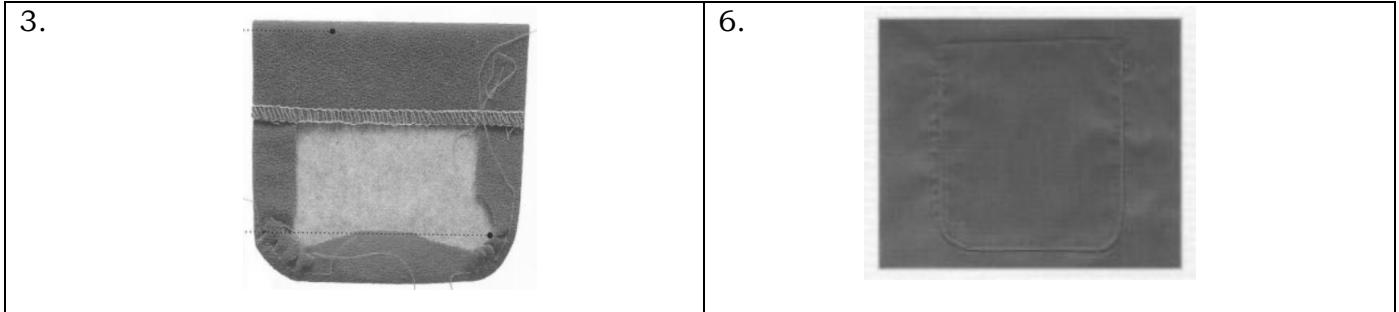
Directions: Make the path following the steps. If there is no available sewing machine, you can use hand sewing.

Equipment	Tools	Supplies
Sewing Machine Ironing Board Flat Iron	Scissors Seam ripper Hand needle Thimble Tape Measure	Fabric 1 pc. 3" x 6" 1pc. 8"x8" Pins Thread
PROCEDURE		
1.		4.
2.		5.
		
		





Republic of the Philippines
Department of Education
 National Capital Region
 Schools Division Office – Muntinlupa City



RUBRICS

Name:		Section:		Date:
ITEMS	20	15	10	SCORE
TOOLS	Tools were complete, appropriate, and correctly used.	Lack of one tool, some are appropriate and correctly used.	Lack of two tools, some are appropriate and correctly used.	
PROCEDURE	Correct methods and procedures correctly followed	Correct methods and procedures incorrectly followed	Failed to follow the correct method and procedures	
SPEED	Finished ahead of time.	Finished on time	Finished beyond the allotted time	

SCORE:

Activity 3
Types of Pocket

Directions: Draw the 3 types of pockets that can be attached to your skirt. Use short size bond paper.

--	--	--





Republic of the Philippines
Department of Education
National Capital Region
Schools Division Office – Muntinlupa City

V. Assessment:

Directions: Write the letter of the correct answer on a separate sheet of paper.

1. A type of pocket that is inserted into the garment with the opening strengthened by an added welt, which is the only section visible when completed.
A. Welt pocket
B. Patch pocket
C. Shear pocket
D. clause pocket
2. Which refers to a piece of cloth stitched to a garment and resembles a small pouch or bag for small items?
A. collar
B. pocket
C. neckline
D. sleeve
3. A pocket is found on the outer part of the garment.
A. slide pocket
B. side pocket
C. bound pocket
D. patch pocket
4. This is known as the pocket proper
A. pocket mouth
B. inner facing
C. pocket bag
D. pocket piece
5. It is a space provided between the cutting line and the seam line.
A. lay-outting
B. seam allowance
C. pinning
D. plain seam

VI. Reflection:

Directions: Answer the following questions briefly on a separate sheet of paper.

1. What significant learning did I gain from the lesson?

References:

Hilario, Carmelita B. (2008). Clothing and Technology Made Easy. Revised Edition. Quad Alpha Centrum Bldg. Mandaluyong City: National Book Store.
Competency-Based Learning Material in Fourth Garments NC II
Department of Education
Effective Technology and Home Economics IV, Cruz, Julia, Duran, Gloria, Philippine Copyright 1998, Adrian Publishing Co. Inc.
Francisco, Chic R., Complete Step-By-Step Guide to Pattern-Making and Sewing of Various Skirt Styles. Golden Ideas Publishing House, Inc., 2000.

Writer: Hermie A. Gregorio
Validator: Leonaida L. Gutierrez

