



# Portfolio

---

Gabby Saucedo



# Table of Contents

I.	Studio Projects
3	Library at Pearl
7	Poppy
11	Maison du Parc
15	Farro Loft
II.	Additional Designs
18	Textile Design
19	Urban Folly Model
21	Visual Research and Analysis

# Studio Projects

---

# Library at Pearl

303 Pearl Parkway, San Antonio, Texas

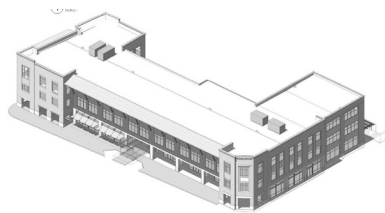
Capstone Studio - 20 Weeks



East Circulation Desk

## Project Overview

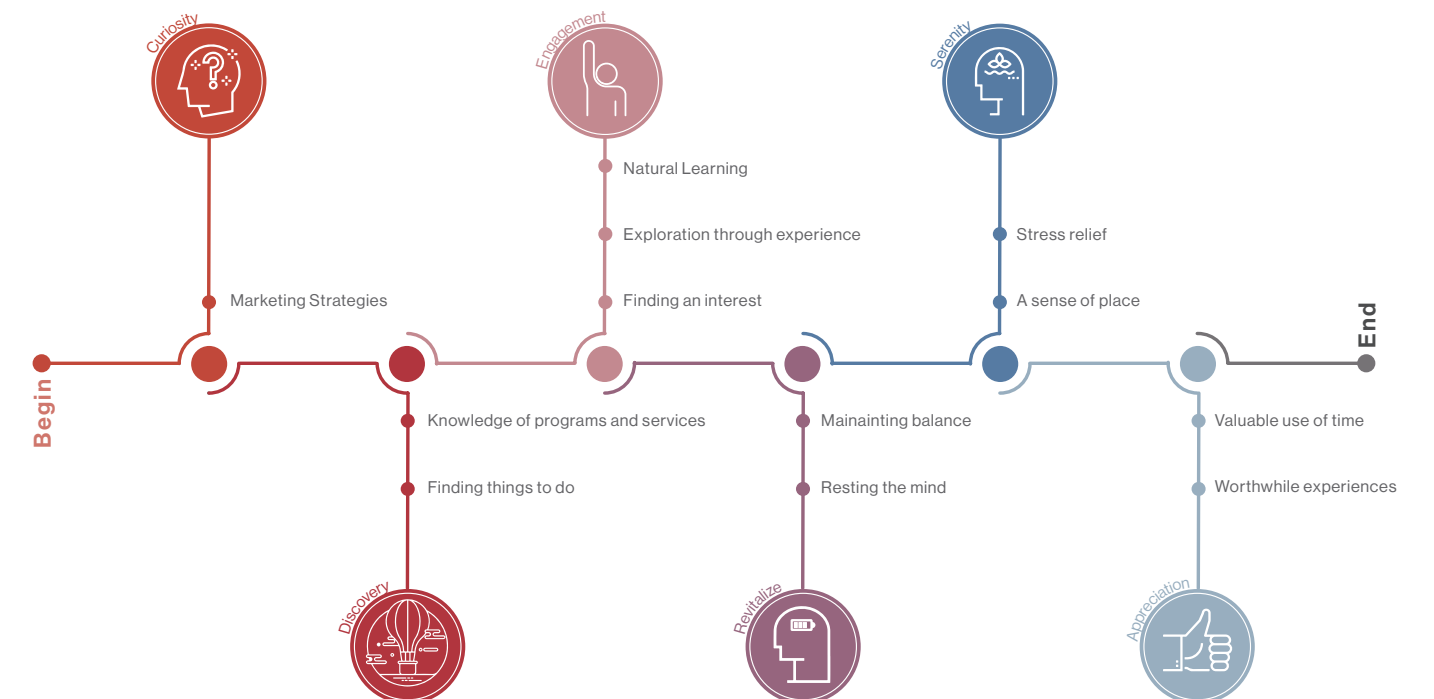
The Library at Pearl is a project focused on using design to transform people's perception of the typical library. Libraries are an invaluable resource to communities and are essential local institutions. With the introduction of social amenities and dynamic spaces, the public library can be transformed into a community hub.



## Research Highlights



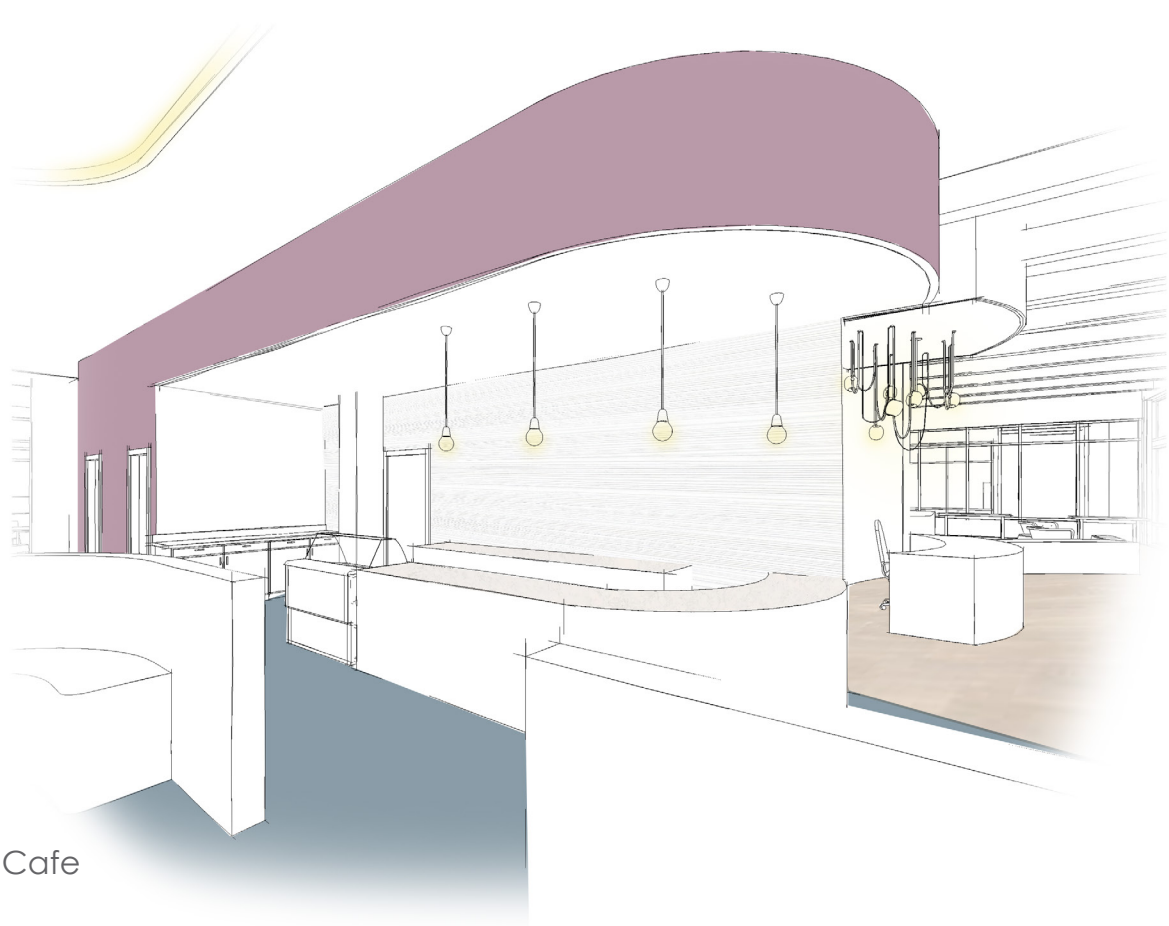
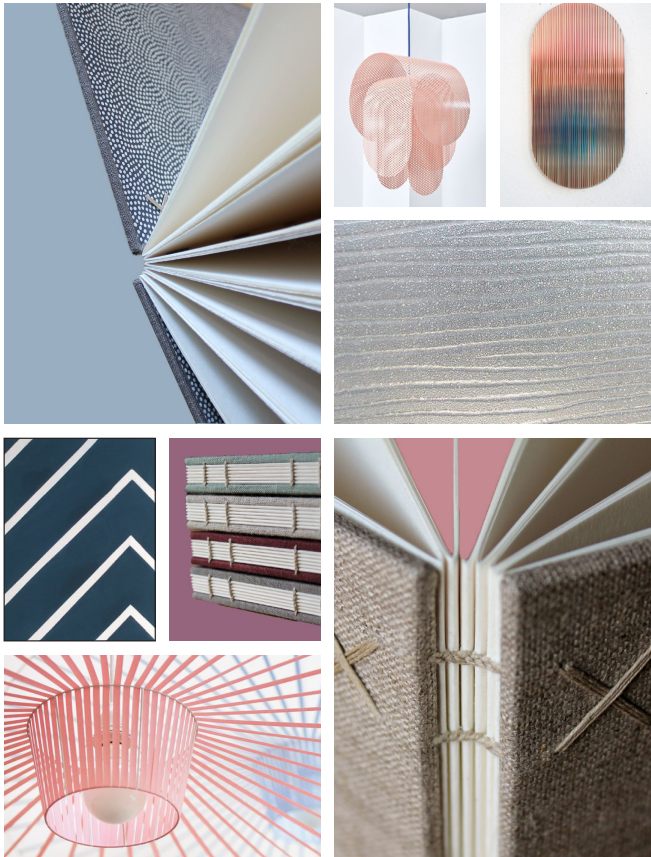
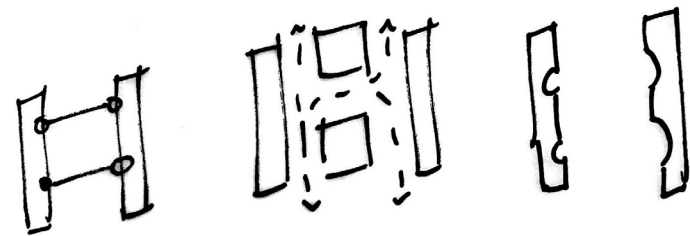
## User Journey





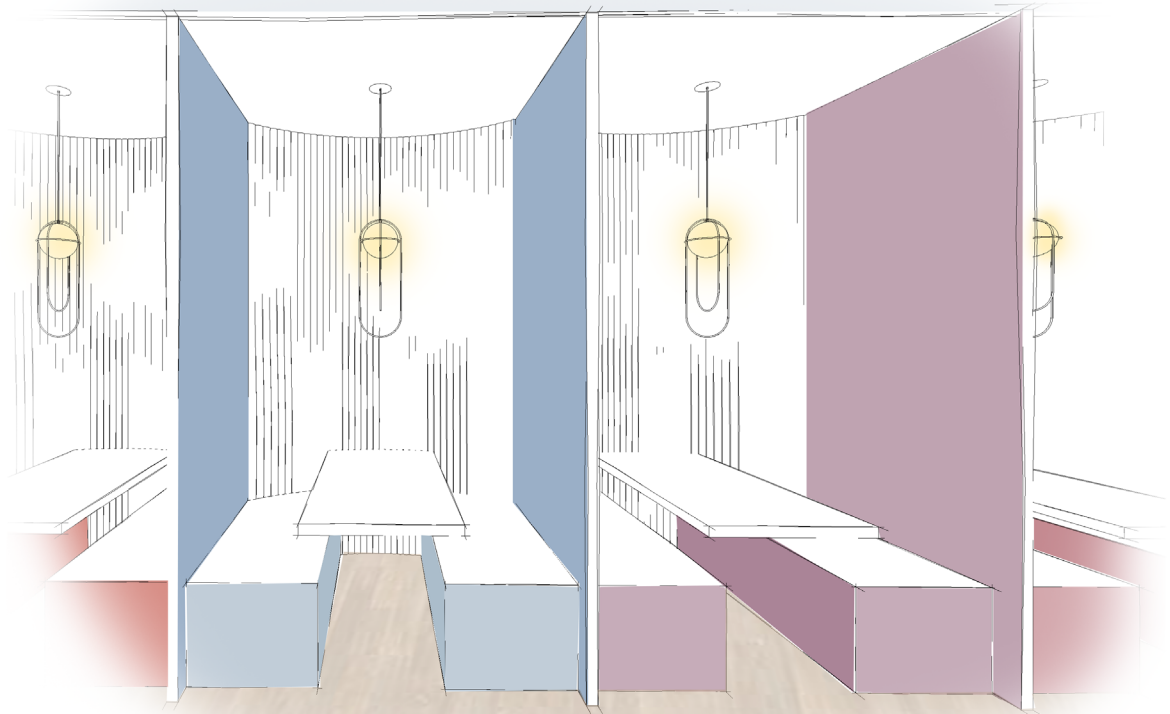
# Concept: Coptic Binding

Coptic binding a form of bookbinding that physically secures the two covers of a book in a way that exposes the spine. The sewn structure of this method represents ways of connecting, securing, and binding two parts of a whole.



Cafe

# Floorplan



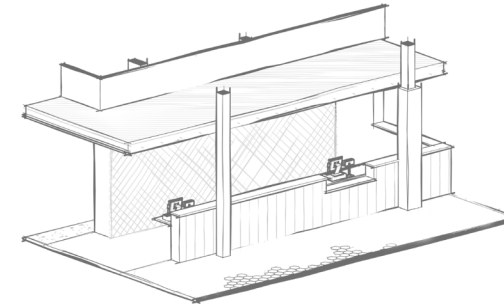
Gathering Nooks



# Poppy

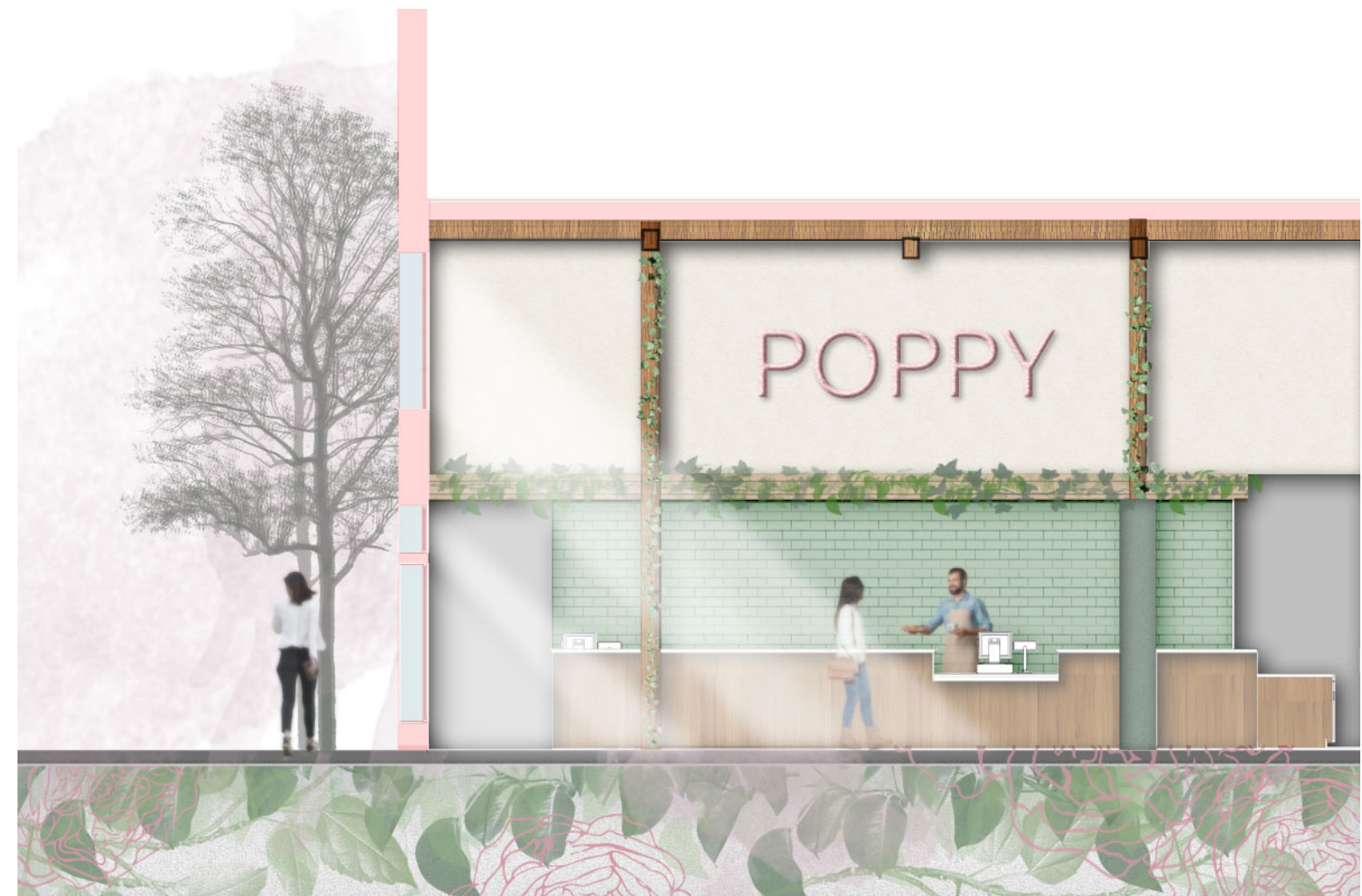
38 Montgomery St. Savannah, Georgia

Fast Casual Flagship - 10 weeks



Point of Sale Axon

Poppy is driven by Ptak's food philosophy. She only cooks with local ingredients and strives to provide the freshest flavors possible. The materiality of the space is natural and feminine, mimicking Ptak's style as a food stylist. Hints of greenery throughout the space help to connect it to the outside environment.



## Client: Claire Ptak

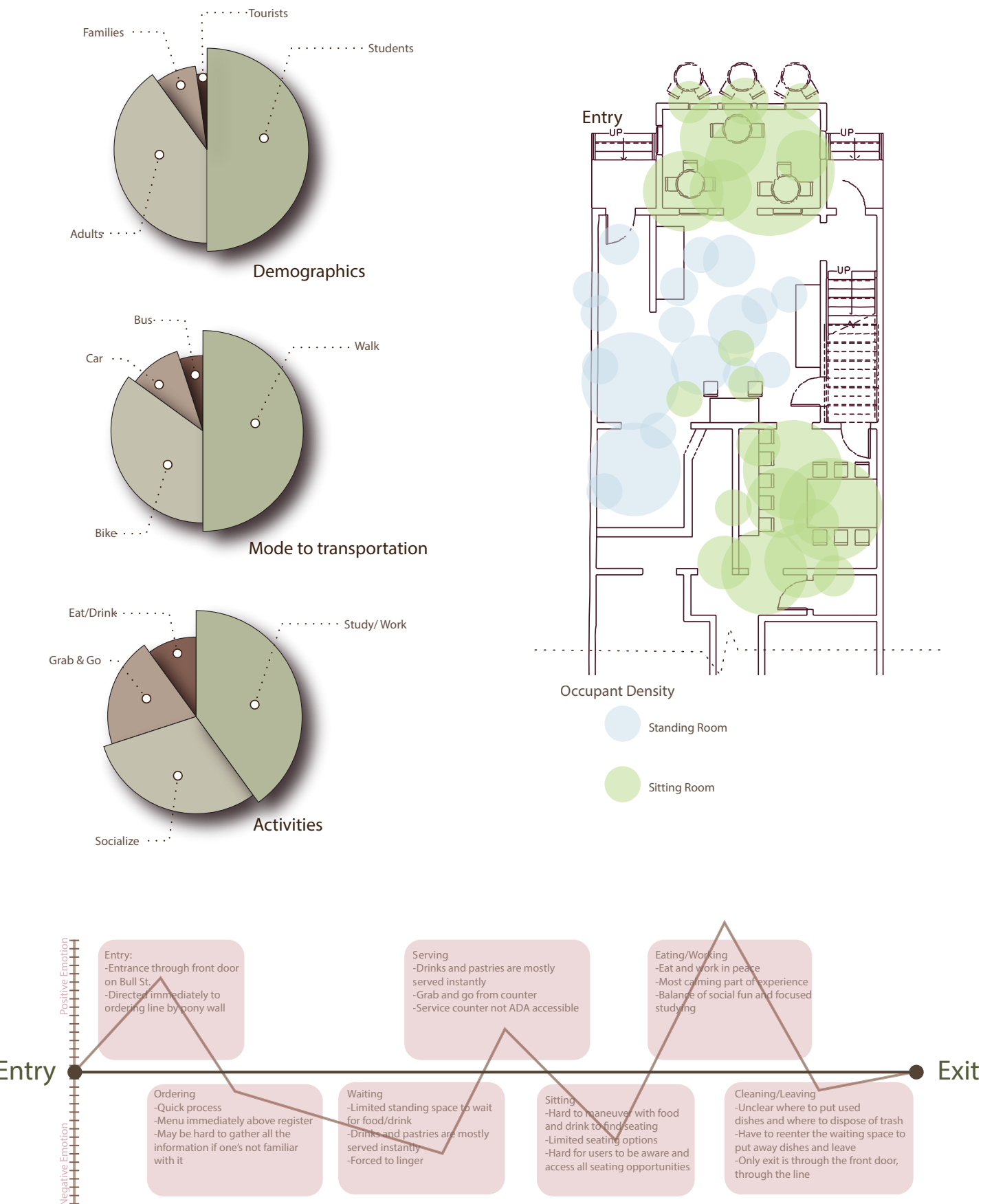
Claire Ptak is an American baker, food stylist, and author. She was taught the art of cooking by her family in California as a young child. She currently runs her own shop, Violet, in London, England. Poppy would mark her return to America with a branded restaurant of her own.





User Experience Research

Case study of Foxy Loxy Cafe in Savannah:



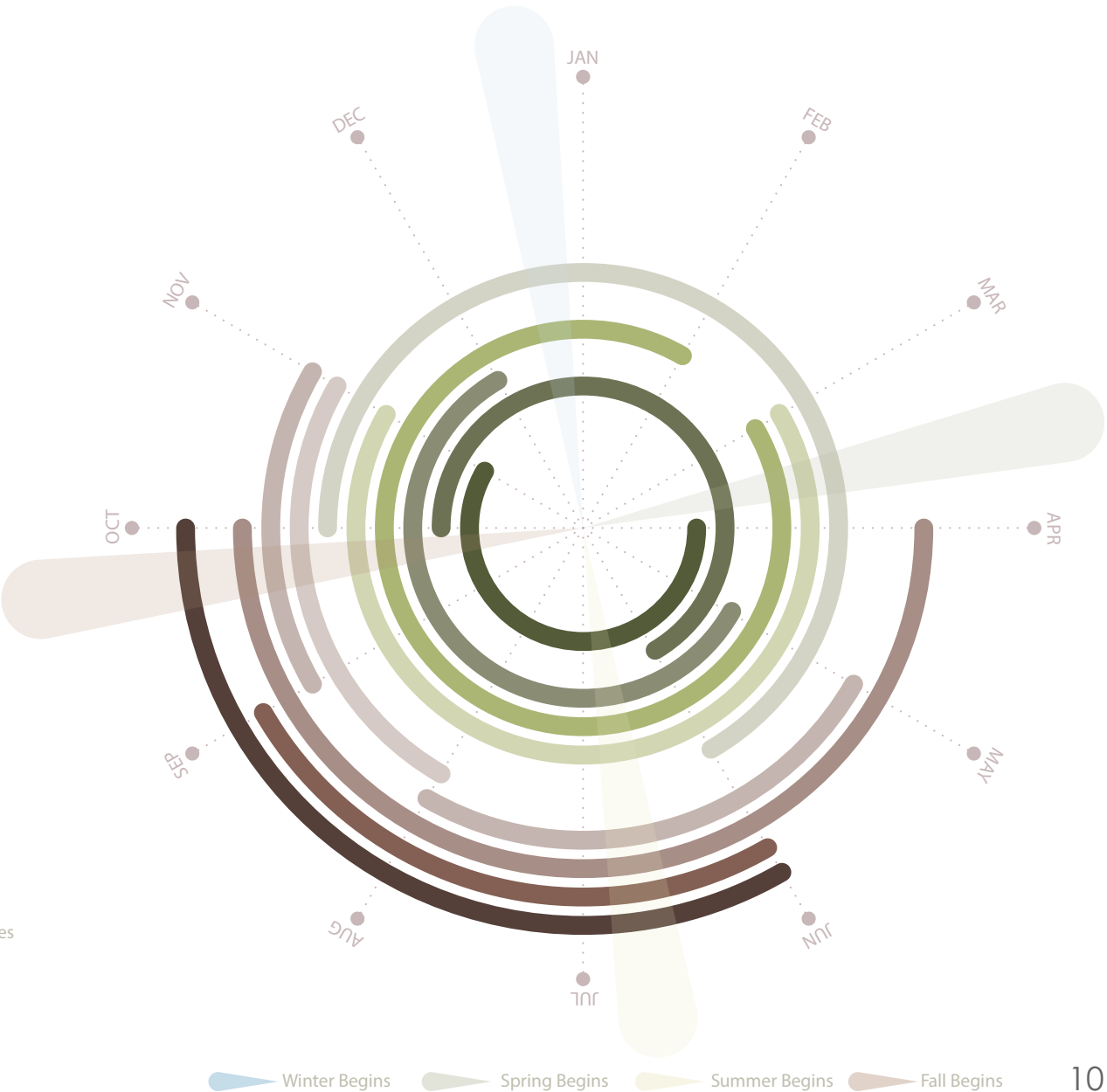
Site Research

Ptak's emphasis on locality and seasonality when it comes to her ingredients was an important consideration when conducting site research. I looked at Savannah's specific seasonal produce and how it fluctuates throughout the year. Prioritizing ingredients and their relationship to Savannah is essential to create a space that fully communicates Ptak's goals and ambitions. It also ingrains these values in customers that comes to visit Poppy.

38 Montgomery St.  
Savannah, GA 31401



- Tomatoes
- Melons
- Berries
- Stone Fruit
- Apples/Pears
- Edible Plant Stems
- Allium Vegetables
- Root Vegetables
- Marrow Vegetables
- Cruciferous Vegetables
- Leafy Greens





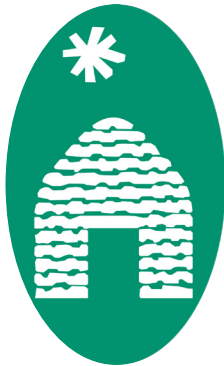
# Maison du Parc

60 Place Jean Juarés, 84400 Apt

Collaborative Preservation Studio - 8 Weeks



Entry Vestibule

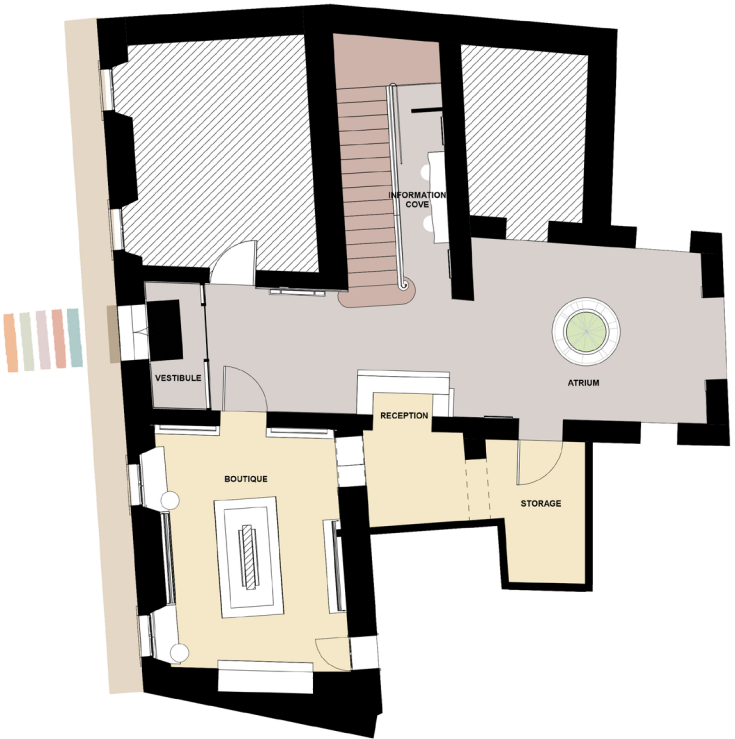


**Client:** Parc Naturel Régional du Luberon

Parc Naturel Régional du Luberon is the gateway to information about France's provincial region. They are made up of 77 municipalities that aim to preserve, educate, and promote engagement with both the man made and natural elements of the region.



This SCADpro sponsored course was a collaborative effort with historic preservation students. We worked together to find a way to preserve Maison du Parc's historic integrity while bringing it up to date to draw more attention to the work they do. Our concept stemmed from the natural and man made beauty of the Luberon, more specifically their cultivation of ochre.



Floorplan



estailades  
stone

ochre

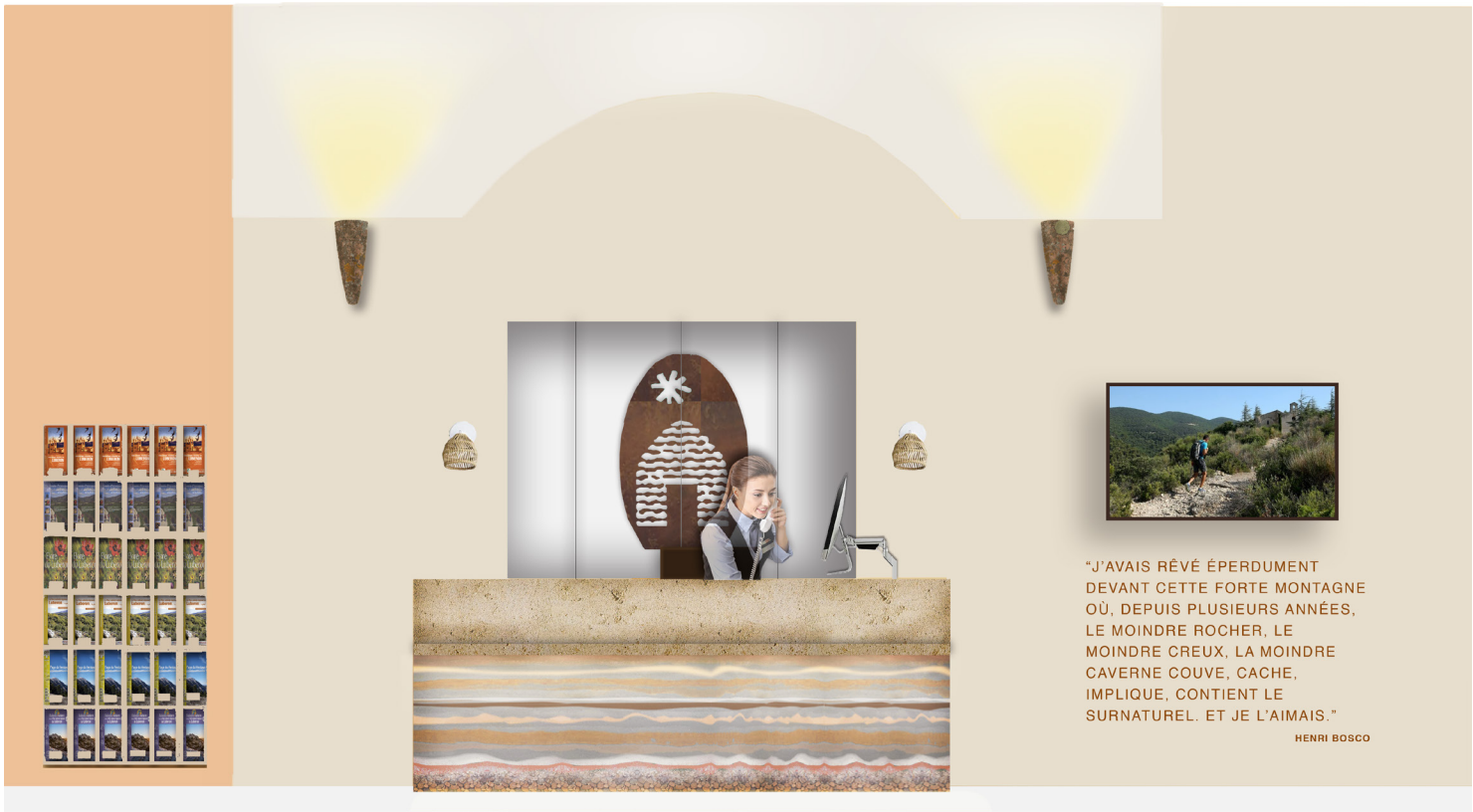
calade  
stone

almond  
tree wood

limestone

terracotta





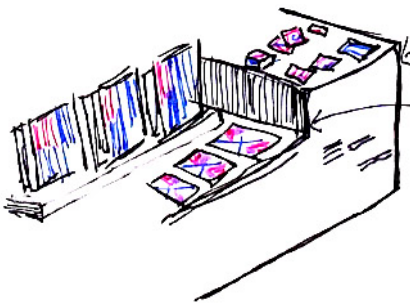
Reception Desk



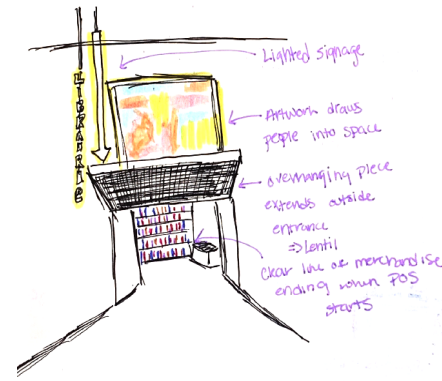
Boutique



Ochre Wall and Information Cove



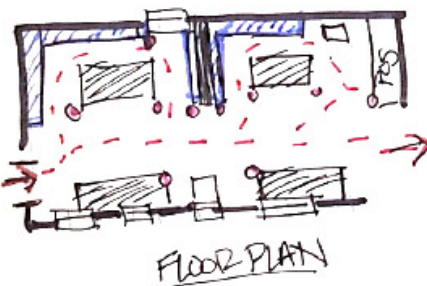
Centre Pompidou



Musée des Arts Décoratifs

Multiple levels of display  
 ↳ smart for Maison du Parc to play with vertical height in small space

For the boutique renovation, we took inspiration from the various retail environments we encountered throughout our excursions to other cities. Through field notes and sketches we developed a concept to increase activity in Maison du Parc's boutique.



Abbaye Notre-Dame de Sénanque

GROUND LEVEL RETAIL

- Floor Display  
 ↳ baskets, etc
- Wall Displays
- Table Displays



# Farro Loft

142 2nd Ave N, Nashville, TN

Residential Adaptive Reuse - 10 weeks



Floorplan Level 2



Floorplan Level 1

Farro's music and photography inspired the mid-century modern aesthetic of his loft. The space is meant to emanate warmth and comfort. The exposed brick adds character to the interior and earth tones create a relaxed atmosphere.



Kitchen Elevation



Living Room



Dining Room



Client: Zac Farro

Zac Farro is best known as the drummer for the rock band, Paramore. He is also in his own band Halfnoise. His loft space was meant to reflect Farro's dynamic lifestyle.

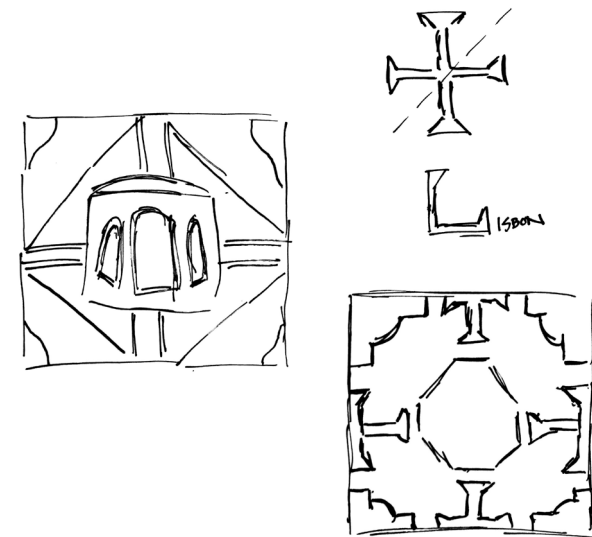
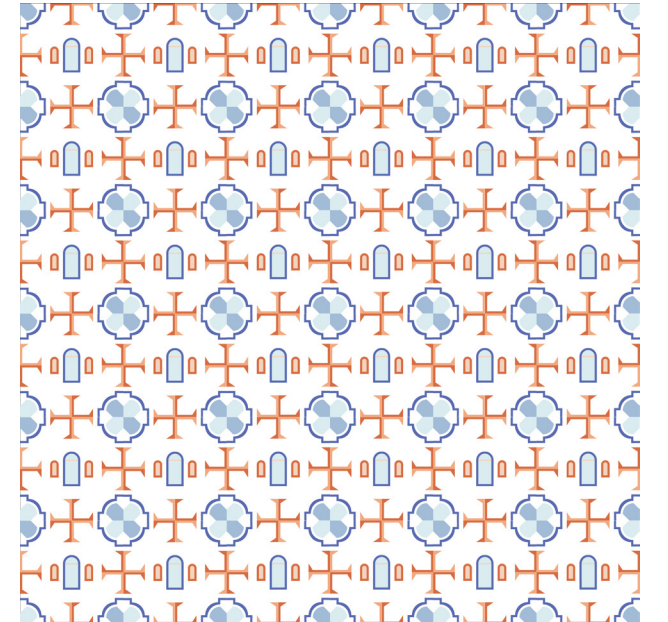
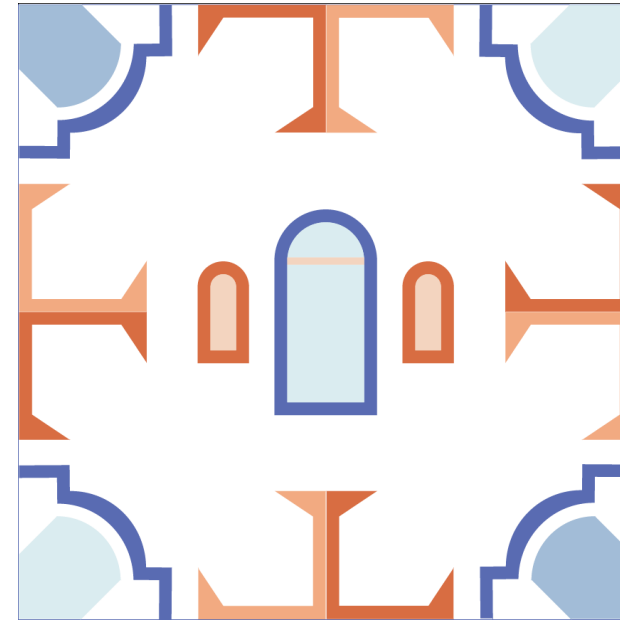


# Additional Designs

## Textile Pattern Design

### Interior Materials

A textile design inspired by Lisbon, Portugal.



Portugal's vibrant and dynamic culture was the inspiration for this pattern. After researching about the daily life in Lisbon, i took design motifs from their trolley's as well as their decorative tiles known as Azulejos. The 9" pattern is repeatable and shown as a full 56" x 56" repeat.





# Urban Folly

## Conceptual Model

A conceptual gallery space inspired by the artist Roos van Dijk.

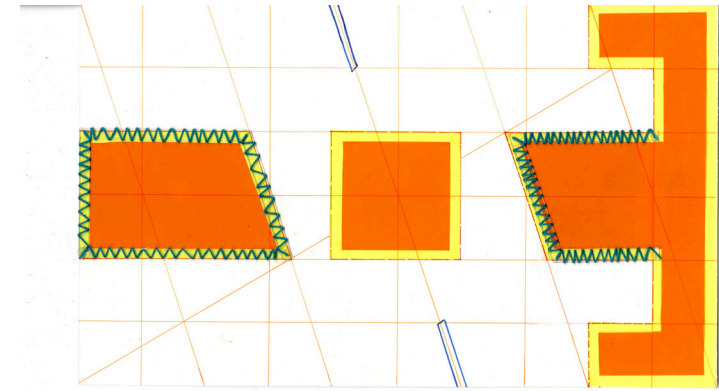


Process models preceding the final

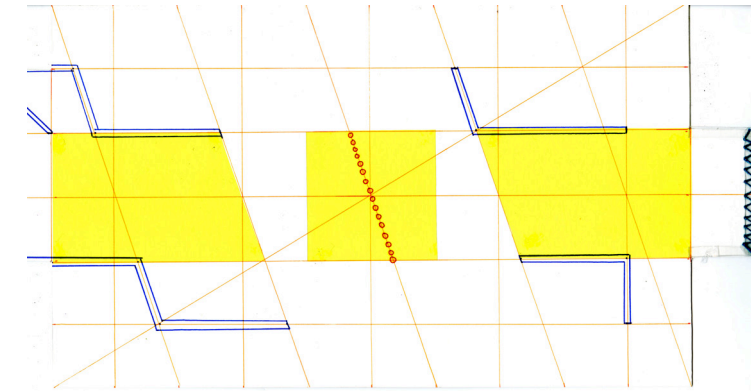


## Artist: Roos van Dijk

Roos van Dijk is a Dutch architectural and abstract painter. Her artwork is characterized by its clean geometry, bold colors, and dramatic light and shade.



Floorplan: Level 1



Floorplan: Level 2

## The Spatial Experience

Van Dijk's work was used as an inspiration for this gallery space. The complimentary colors and geometric forms create a dynamic experience that guides users throughout the space. Light and views were transformed using translucent materials and repetitive patterns



Entry Perspective



Stairway Perspective



Entry Vestibule



# Visual Research and Analysis

## Lighting for Production Design

Concept renderings inspired by fantastical lighting.

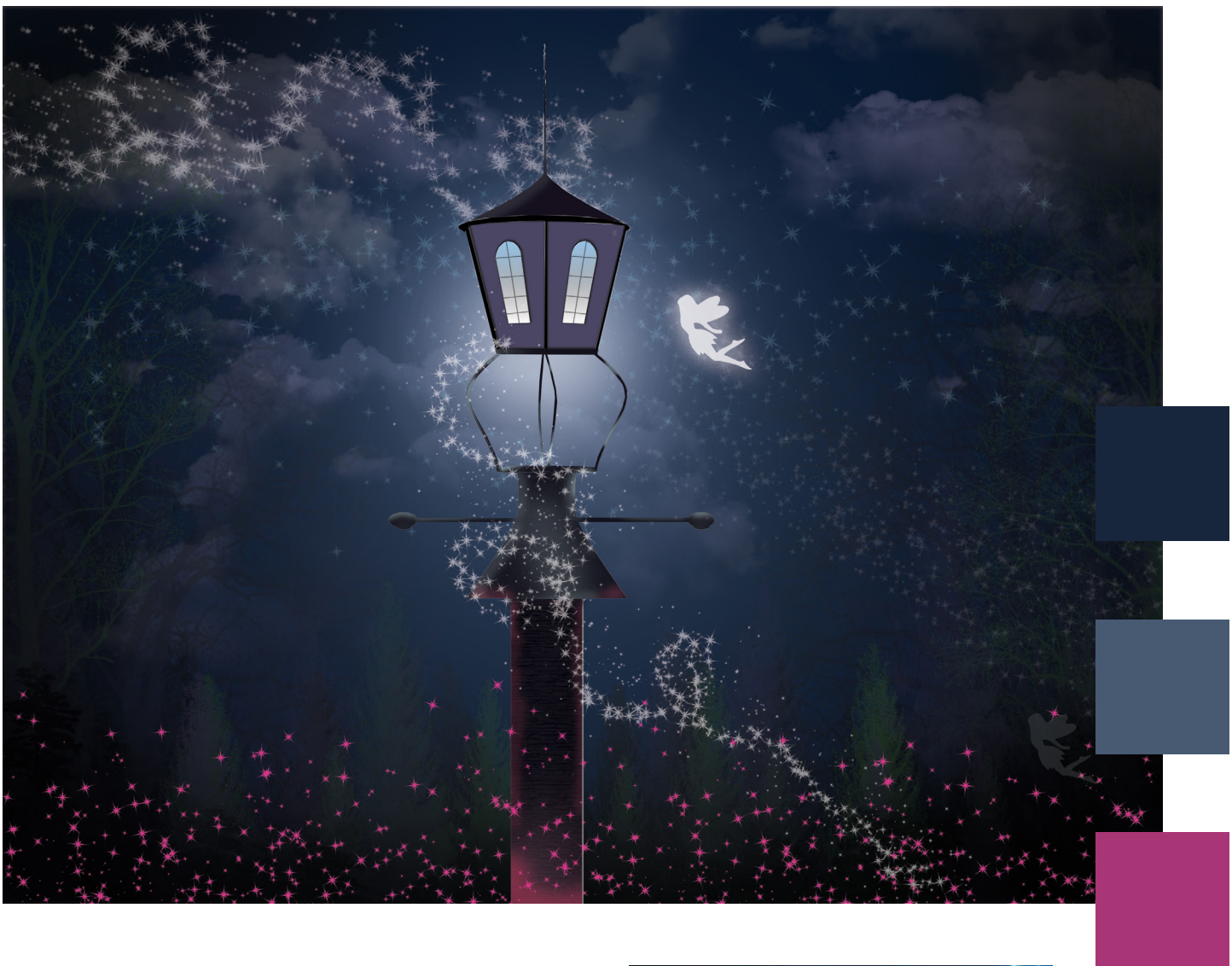


### Lighting for Light's Sake

David Stenbeck's digital rendering was the inspiration for this concept environment. I focused on the contrast in color, as well as the luminance in Stenbeck's work. I wanted to create a space that felt surreal and lived somewhere where water and clouds coexist.



David Stenbeck  
@dovneon



### Subject Based Lighting

This rendering of a faerie house is inspired by the magical quality of this still from the 2014 movie *Maleficent*. I wanted to create a sense of brilliant light in the dark forest. The light creates a focal point to instill awe and communicate an environment filled with magic.



*Maleficent* (2014)



## Contact

---

**Email**      GabbySauceda8@gmail.com

**Phone**      (210) ◦ 859 ◦ 7612

**Website**      GabbySauceda.com

**LinkedIn**      linkedin.com/in/gabby-sauceda

**Instagram**      instagram.com/gabbysaucedadesign

