

Gabby Saucedo

Warby Parker Headquarters

230 W Broughton Street | Savannah, GA 31401

Drawn by GS

Date 2-20-2018

COVER SHEET

G 000

Scale 1/4" = 1'-0"

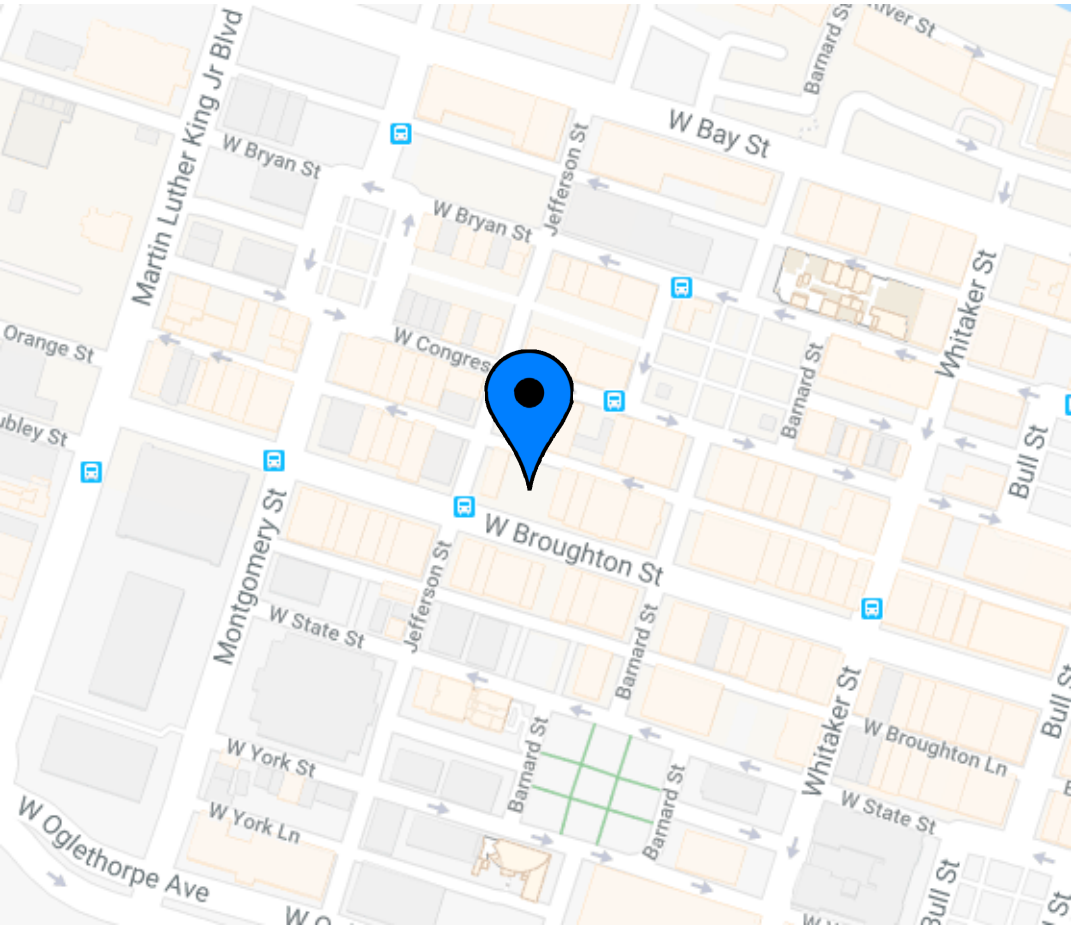
2/28/2018 12:46:36 PM

Sheet List	
Sheet Number	Sheet Name
G 000	COVER SHEET
ID 0.0	LIFE SAFETY PLAN LEVEL 3
ID 1.0	CONSTRUCTION PLAN LEVEL 3
ID 1.1	CONSTRUCTION PLAN LEVEL 4
ID 2.0	FURNITURE PLAN LEVEL 3
ID 2.1	FURNITURE PLAN LEVEL 4
ID 3.0	REFLECTED CEILING PLAN LEVEL 3
ID 3.1	REFLECTED CEILING PLAN LEVEL 4
ID 4.0	FINISH PLAN LEVEL 3
ID 5.0	POWER AND DATA PLAN
ID 6.0	ENLARGED PLANS
ID 7.0	ELEVATIONS
ID 7.1	ELEVATIONS
ID 7.2	BUILDING SECTIONS
ID 8.0	WALL SECTIONS AND MILLWORK
ID 9.0	SCHEDULES

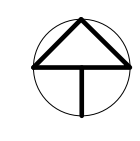
Symbol Legend	
Symbol	Symbol Name
	Callout Head
	Ceiling Tag with Height
	Centerline
	Door Tag
	Elevation Tag
	Keynote
	Millwork Finish Tag
	North Arrow
	Room Finish Tag
	Room Tag with Number
	Section Head
	Section Tail
	Wall Tag

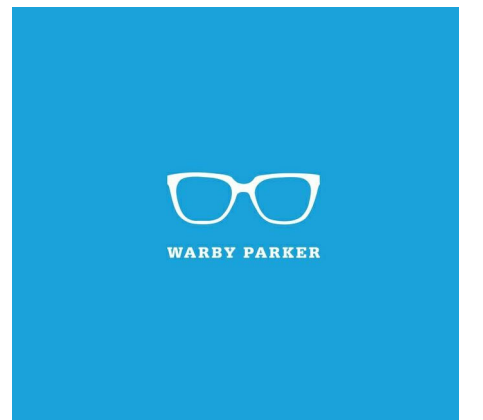


WARBY PARKER HEADQUARTERS



Savannah, GA

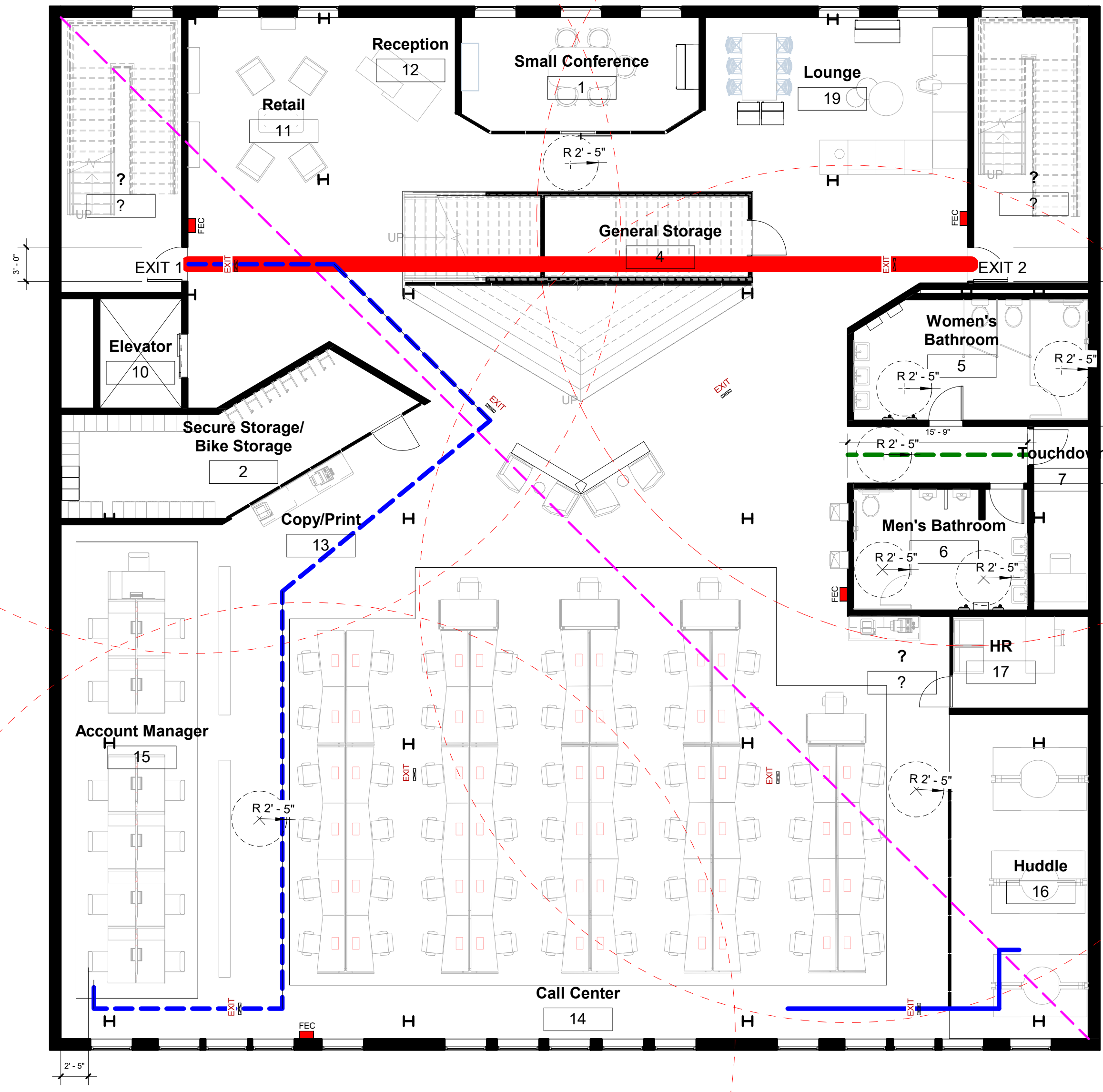




Gabby Saucedo

Warby Parker Headquarters

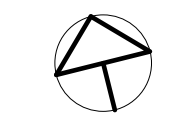
230 W Broughton Street | Savannah, GA 31401



SYMBOL LEGEND	
	Overall Diagonal
	Common Path of Travel
	Greatest Travel Distance
	Exit Separation
	Fire Extinguisher Coverage Area
	Fire Extinguishers
	Dead End Corridor
	Exit Sign
	ADA Clearances

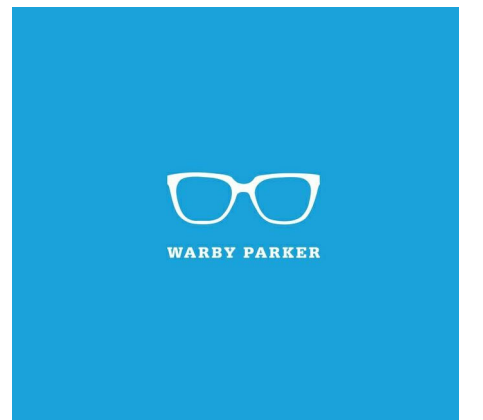
LIFE SAFETY DATA	
Occupancy Classification	Business (B)
Common Path of Travel	22' - 2"
Greatest Travel Distance	107' - 5"
Exit Separation	68' - 2"
Overall Diagonal	126' - 9"
Dead End Corridor	15' - 9"

① LIFE SAFETY PLAN LEVEL 3
1/8" = 1'-0"



Drawn by	GS
Date	2-20-2018
LIFE SAFETY PLAN LEVEL 3	
ID 0.0	
Scale	As indicated

2/28/2018 12:46:46 PM

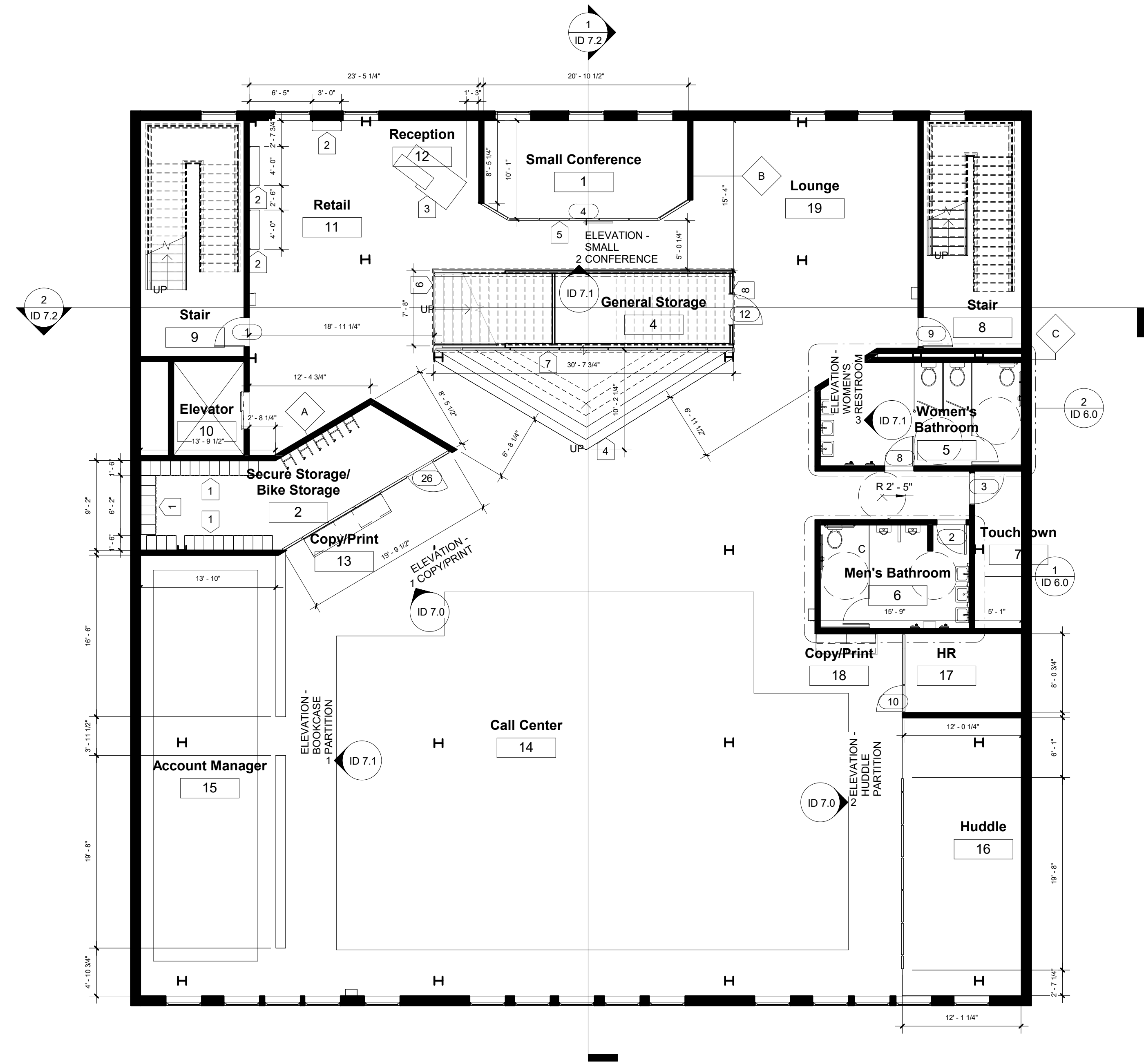


Gabby Saucedo

Warby Parker Headquarters

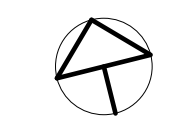
230 W Broughton Street | Savannah, GA 31401

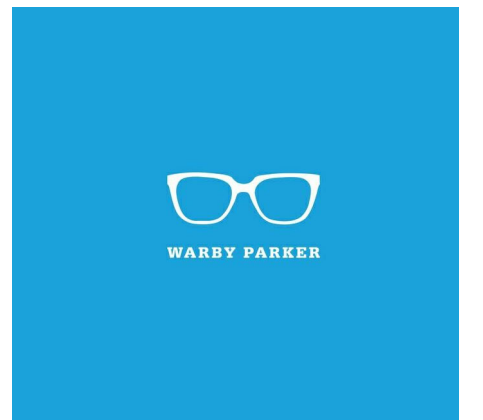
KEYNOTES	
1	Built-in stacked employee lockers
2	Wall mounted built-in retail shelves
3	Custom reception desk
4	Sitting stairs in central location
5	Curtain wall into small conference room
6	Open to above area around grand staircase
7	Double height curtain wall extending along side of grand staircase
8	General storage built under stairs



1 CONSTRUCTION PLAN LEVEL 3
1/8" = 1'-0"

Drawn by	GS
Date	2-20-2018
CONSTRUCTION PLAN LEVEL 3	
ID 1.0	
Scale	1/8" = 1'-0"



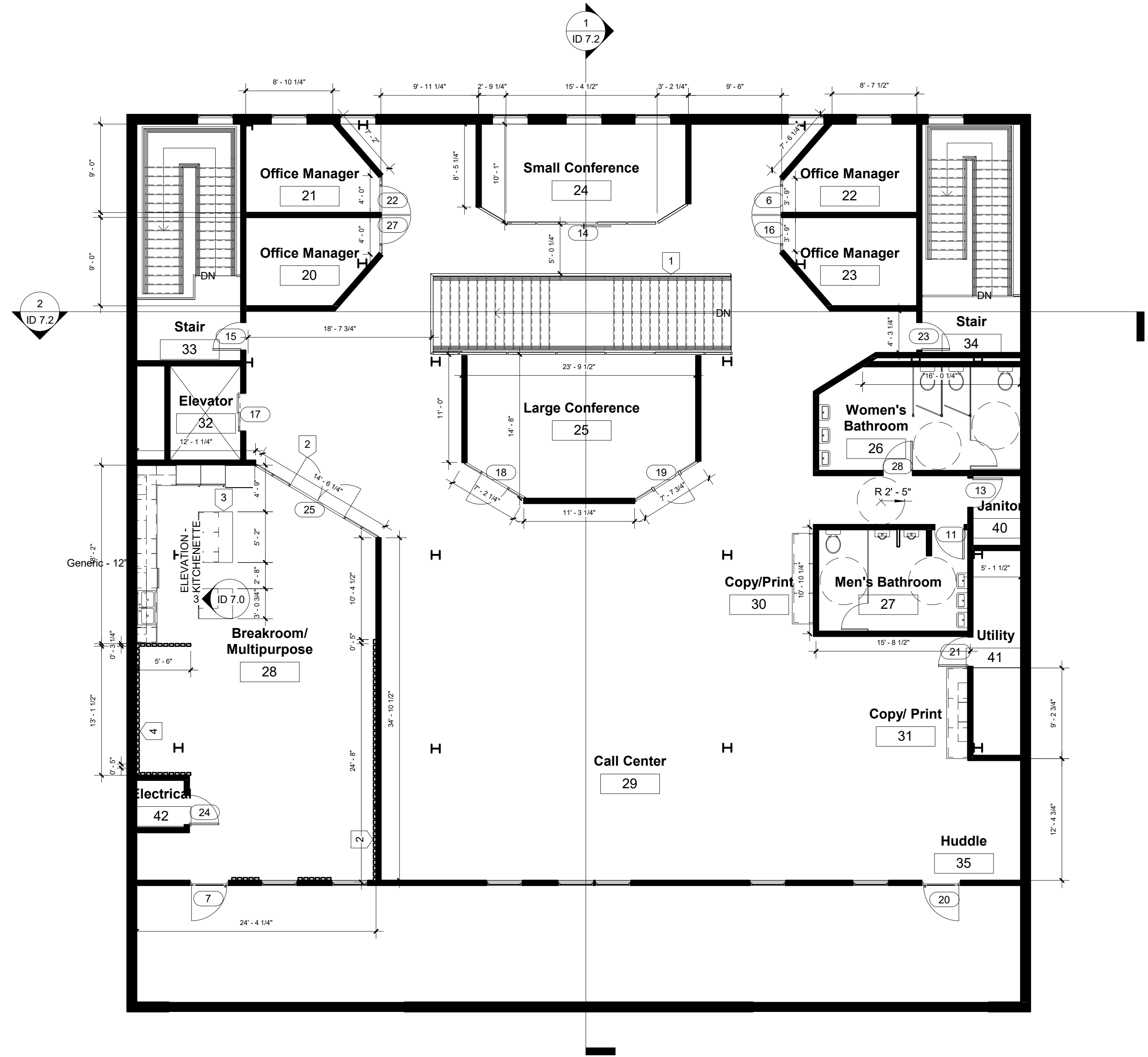


Gabby Saucedo

Warby Parker Headquarters

230 W Broughton Street | Savannah, GA 31401

KEYNOTES	
1	Glass railing along stair
2	Double door in curtain wall at breakroom entry
3	Island countertop space for prep and seating
4	Wood slats on wall



1 CONSTRUCTION PLAN LEVEL 4
1/8" = 1'-0"

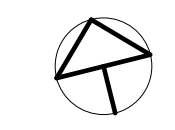
Drawn by GS

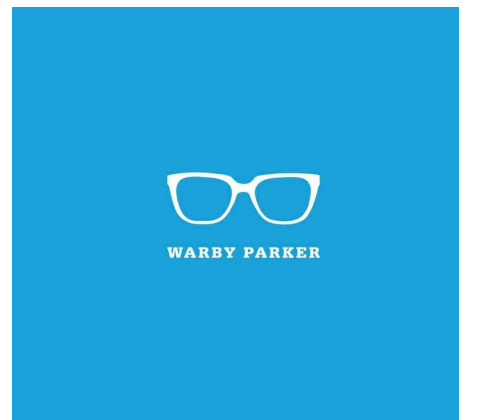
Date 2-20-2018

CONSTRUCTION PLAN LEVEL 4

ID 1.1

Scale 1/8" = 1'-0"



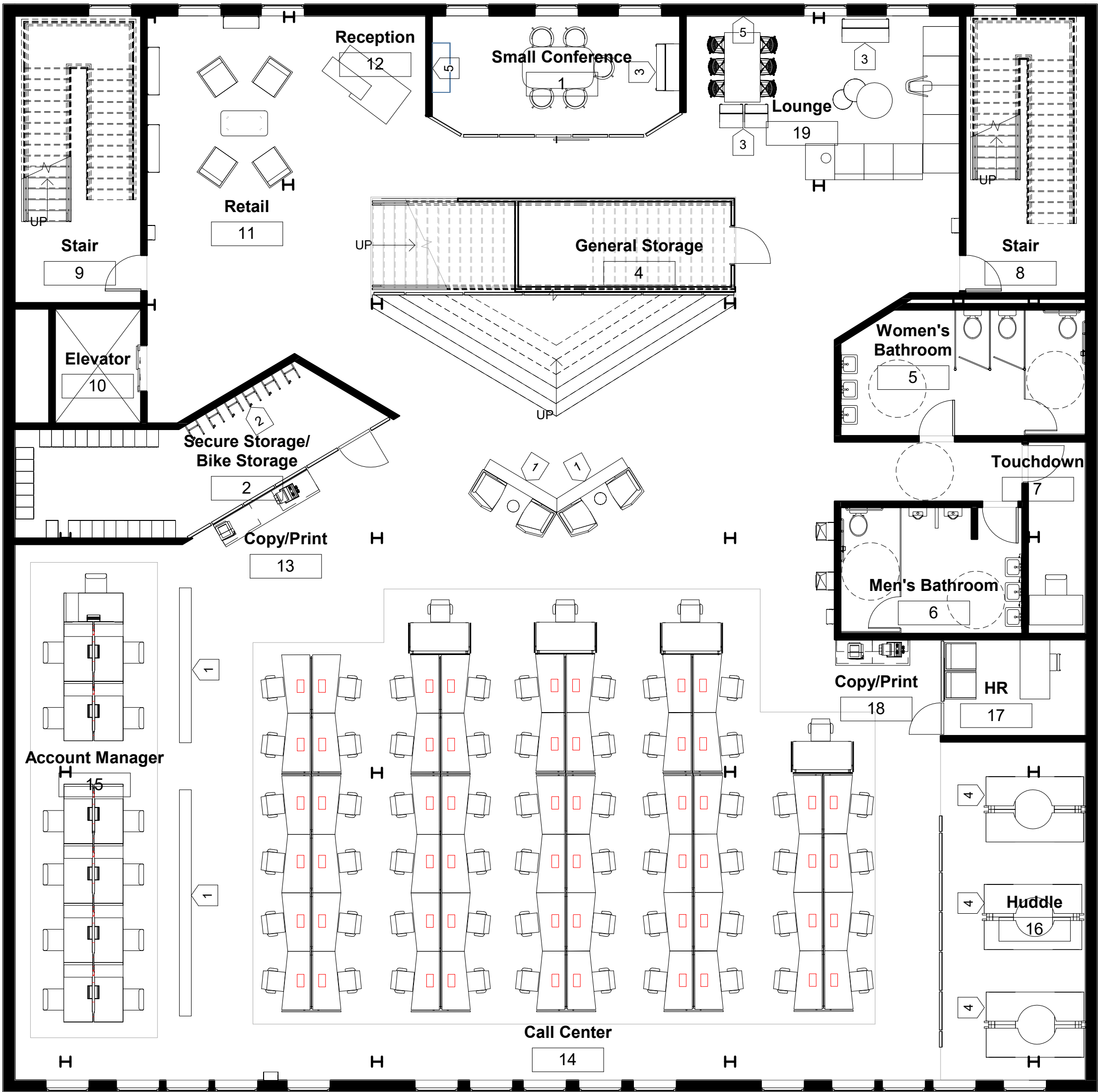


Gabby Saucedo

Warby Parker Headquarters

230 W Broughton Street | Savannah, GA 31401

KEYNOTES	
1	10' custom bookcases to serve as partition
2	Bike racks mounted to wall at minimum 4' above floor
3	Moveable work surfaces
4	Semi-private seating for huddle
5	Wall mounted TV



① FURNITURE PLAN LEVEL 3
1/8" = 1'-0"

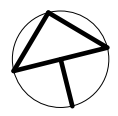
Drawn by GS

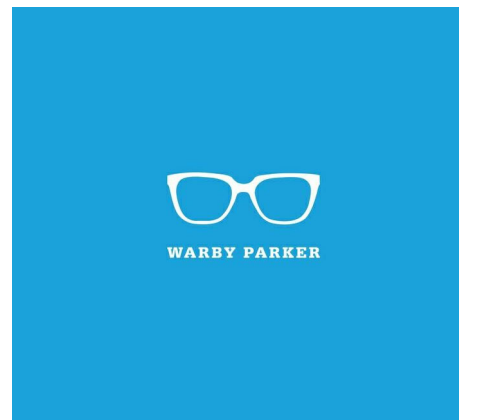
Date 2-20-2018

FURNITURE PLAN
LEVEL 3

ID 2.0

Scale 1/8" = 1'-0"



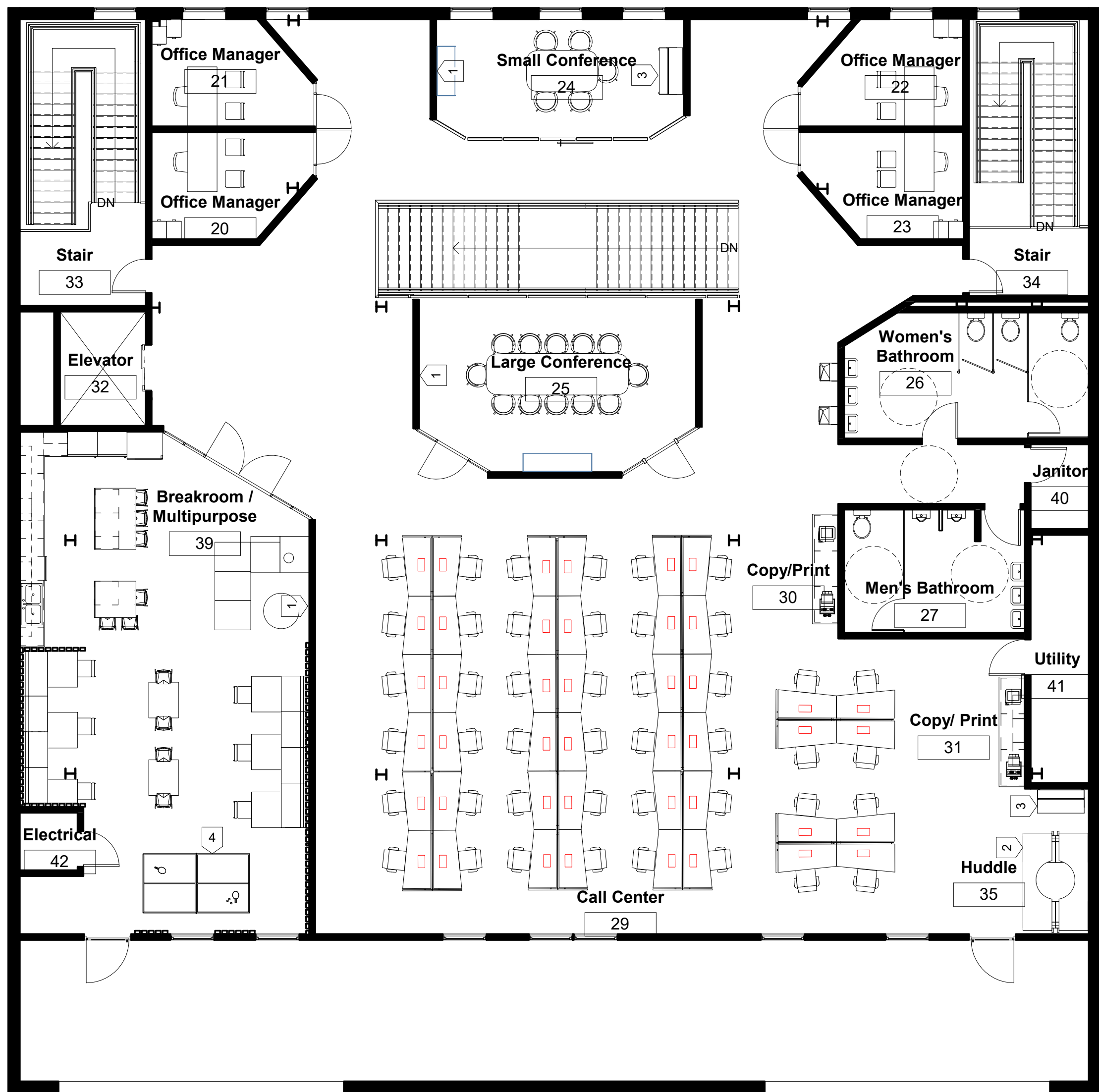


Gabby Saucedo

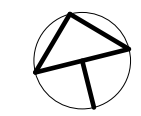
Warby Parker Headquarters

230 W Broughton Street | Savannah, GA 31401

KEYNOTES	
1	Wall mounted TV
2	Semi-private seating for huddle
3	Moveable work surfaces
4	Multipurpose ping pong table



① FURNITURE PLAN LEVEL 4
1/8" = 1'-0"



Drawn by GS

Date 2-20-2018

FURNITURE PLAN
LEVEL 4

ID 2.1

Scale 1/8" = 1'-0"

2/27/2018 5:23:41 PM

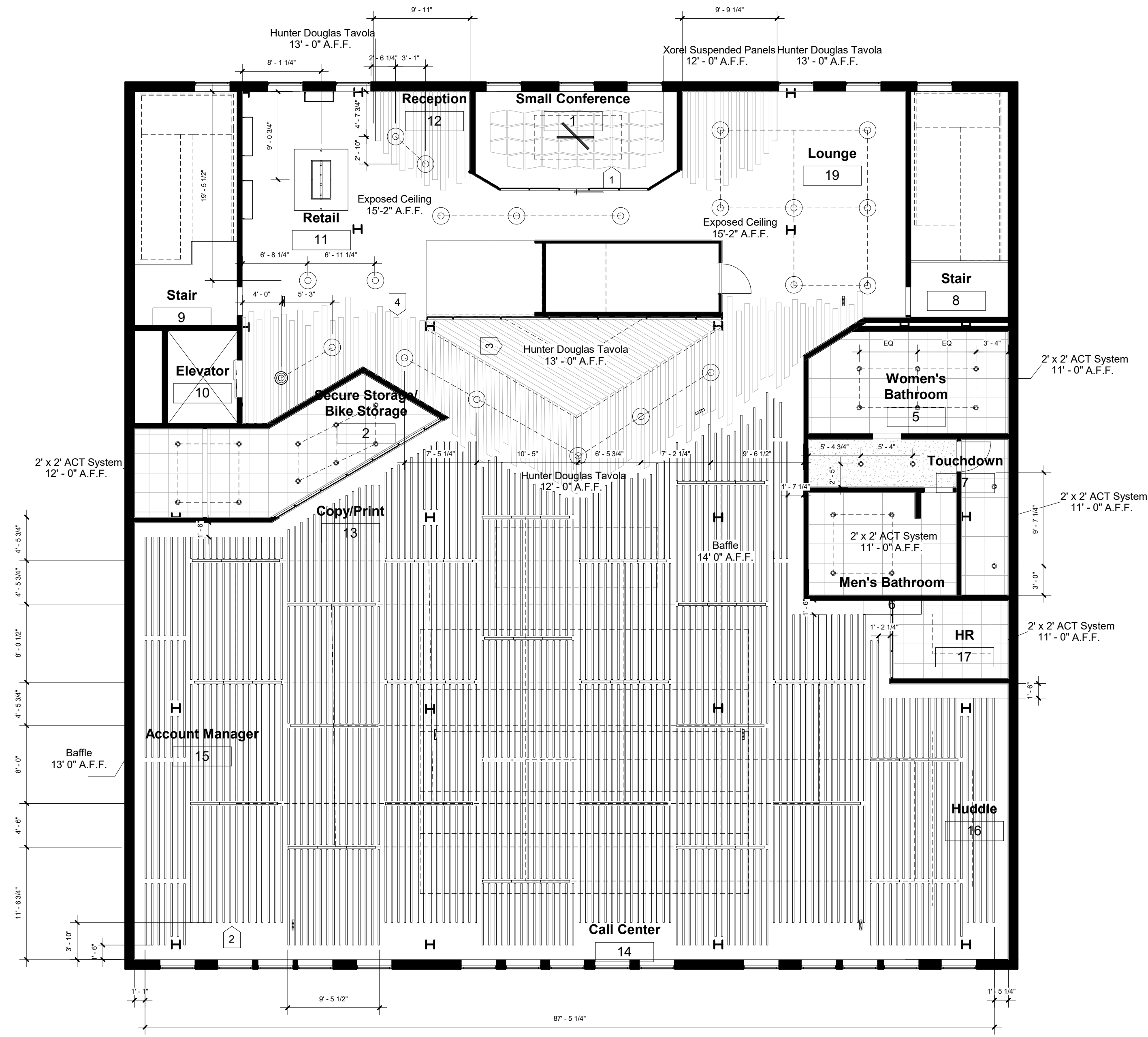


Gabby Saucedo

Warby Parker Headquarters

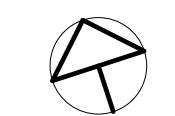
230 W Broughton Street | Savannah, GA 31401

KEYNOTES	
1	Xorel Artform panels mounted from ceiling to be centered in room
2	Hunter Douglas Baffles to be placed 6" from each other vertically and horizontally. Baffles typically 1'6" from wall unless otherwise noted. QP Triple Section Linear Bar lights to be placed in center of gaps between baffles where shown.
3	HD Tavola planks placed at angle that follows sitting stairs
4	HD Tavola planks at varying lengths through pathway



Lighting Legend	
○	RECESSED CAN
⊙	HOIST PENDANT
—	QP TRIPLE SECTION LINEAR BAR
▭	MURRAY RECTANGULAR CHANDELIER
⌵	RBW BRANCH PENDANT LARGE

1 REFLECTED CEILING PLAN LEVEL 3
1/8" = 1'-0"



Drawn by	GS
Date	2-20-2018
REFLECTED CEILING PLAN LEVEL 3	
ID 3.0	
Scale	1/8" = 1'-0"

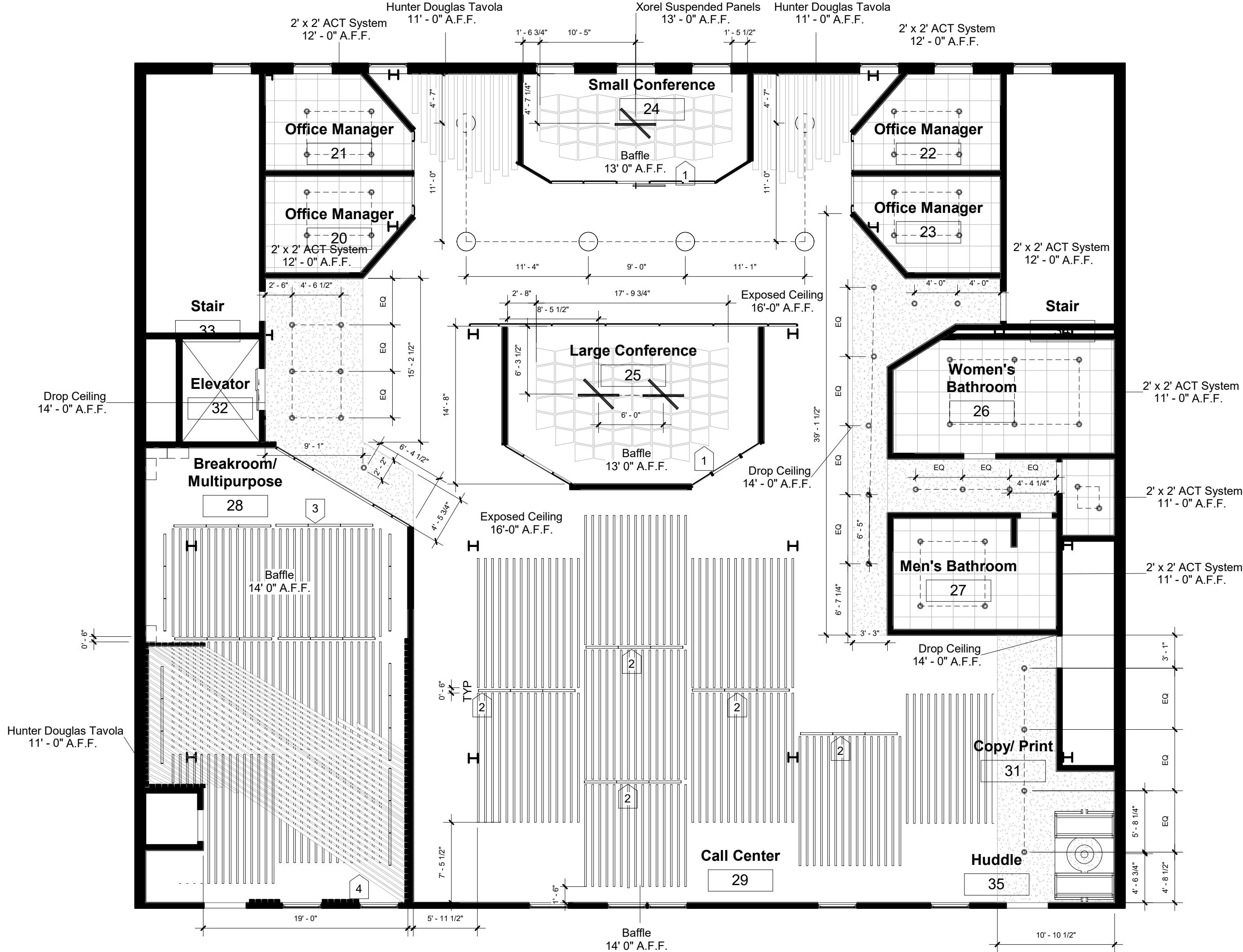
2/28/2018 12:47:08 PM



Gabby Saucedo

Warby Parker Headquarters

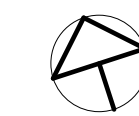
230 W Broughton Street | Savannah, GA 31401



KEYNOTES	
1	Xorel Artform panels mounted from ceiling to be centered in room
2	Hunter Douglas Baffles to be placed 6" from each other vertically and horizontally. QP Triple Section Linear Bar lights to be placed in center of gaps between baffles where shown.
3	QP Triple Section Linear Bar light to be placed 6" from edge of baffles in breakroom where shown.
4	Hunter Douglas Tavola ceiling design to be placed under baffles in breakroom where shown.

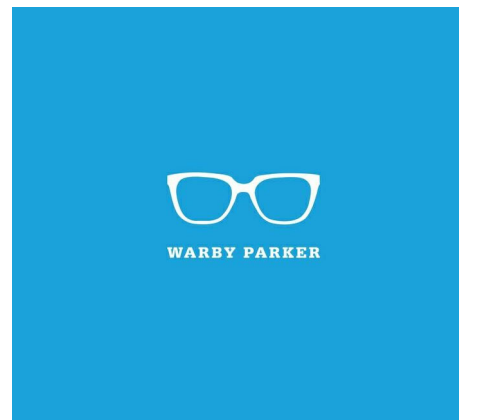
Symbol	Lighting Legend	Fixture
○		HOIST PENDANT
⊘		RBW BRANCH PENDANT LARGE
○		RECESSED CAN
—		QP TRIPLE SECTION LINEAR BAR

① REFLECTED CEILING PLAN LEVEL 4
1/8" = 1'-0"



Drawn by	GS
Date	2-20-2018
REFLECTED CEILING PLAN LEVEL 4	
ID 3.1	
Scale	1/8" = 1'-0"

2/28/2018 12:47:11 PM

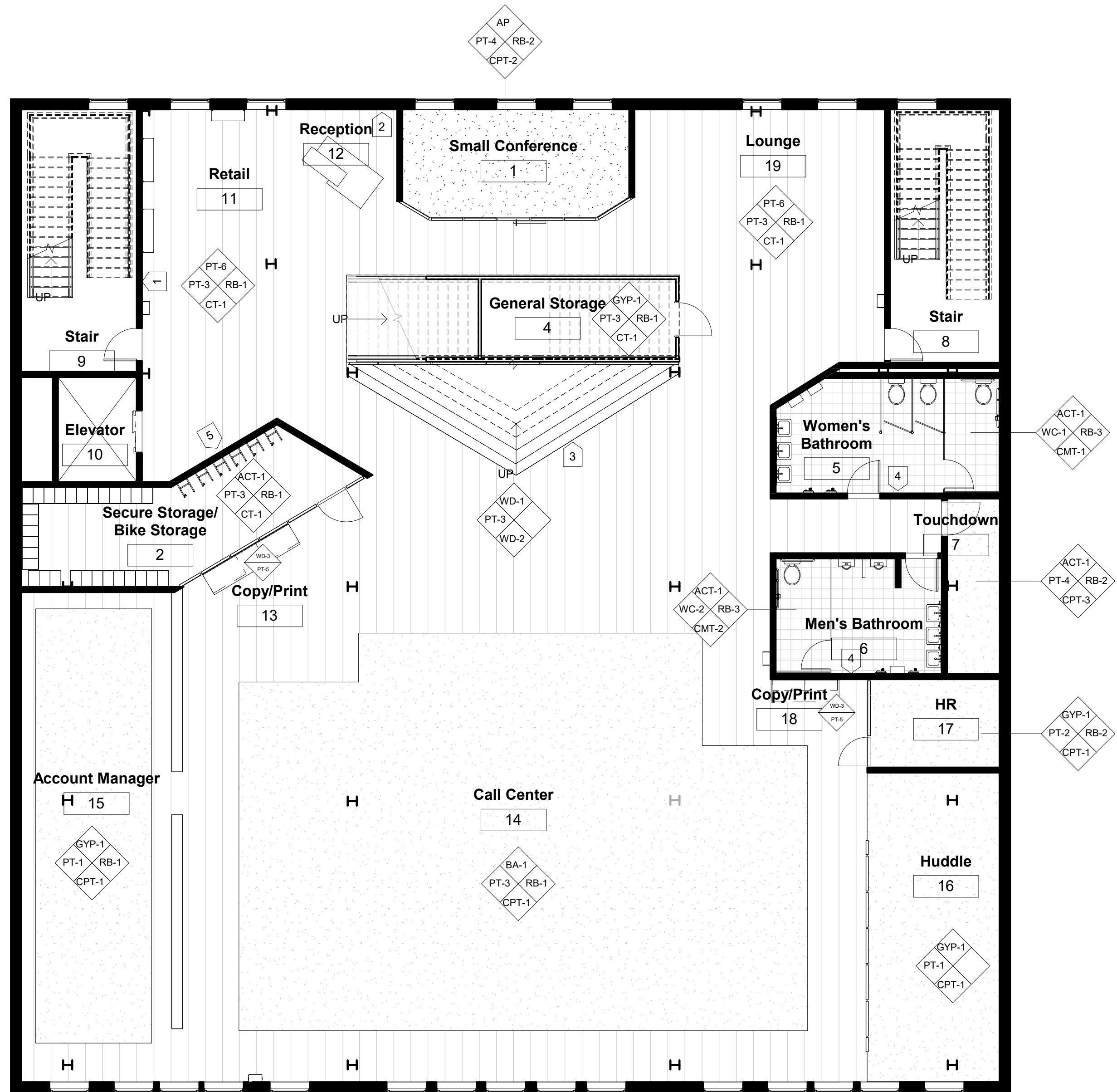


Gabby Saucedo

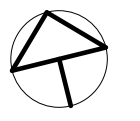
Warby Parker Headquarters

230 W Broughton Street | Savannah, GA 31401

KEYNOTES	
1	No wall base - brick to meet directly with floor
2	Wall to have multiple paint colors
3	Sitting stairs to be wood veneer
4	Wallcovering on two sides of bathroom, with paint on remaining walls
5	Graphic wall at entrance



① FINISH PLAN LEVEL 3
1/8" = 1'-0"



Drawn by	GS
Date	2-20-2018
FINISH PLAN LEVEL 3	
ID 4.0	
Scale	1/8" = 1'-0"

2/28/2018 12:47:15 PM



Gabby Saucedo

Warby Parker Headquarters

230 W Broughton Street | Savannah, GA 31401

Drawn by GS

Date 2-20-2018

POWER AND DATA PLAN

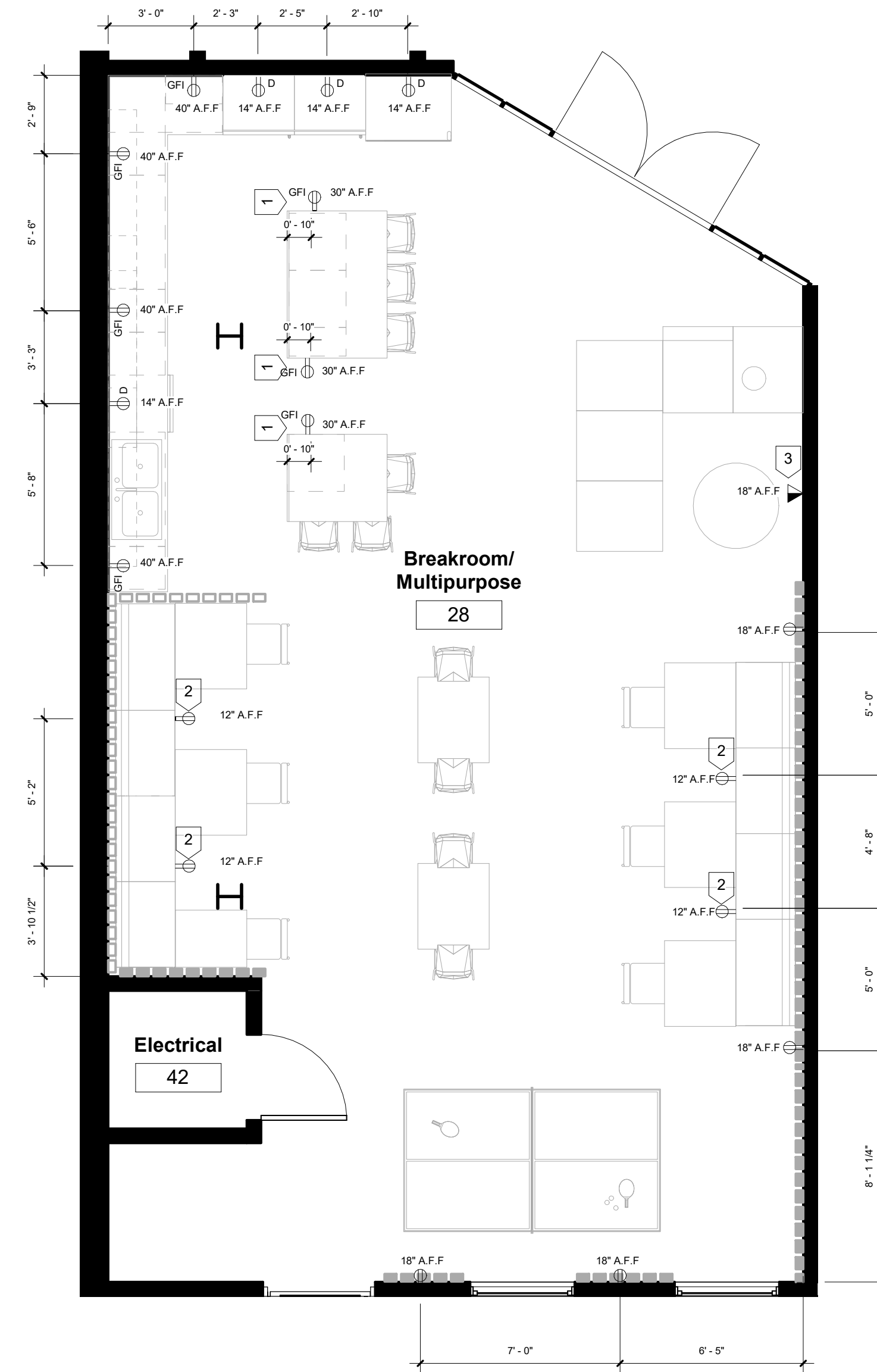
ID 5.0

Scale 1/4" = 1'-0"

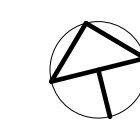
2/27/2018 6:38:32 PM

KEYNOTES	
1	Outlets mounted on island cabinets
2	Outlets mounted to bases of booth seating
3	Data outlet for wall mounted TV

POWER AND DATA LEGEND	
	Duplex Outlet
	GFI Outlet
	Dedicated Circuit
	Data Outlet



① POWER DATA PLAN BREAKROOM
1/4" = 1'-0"

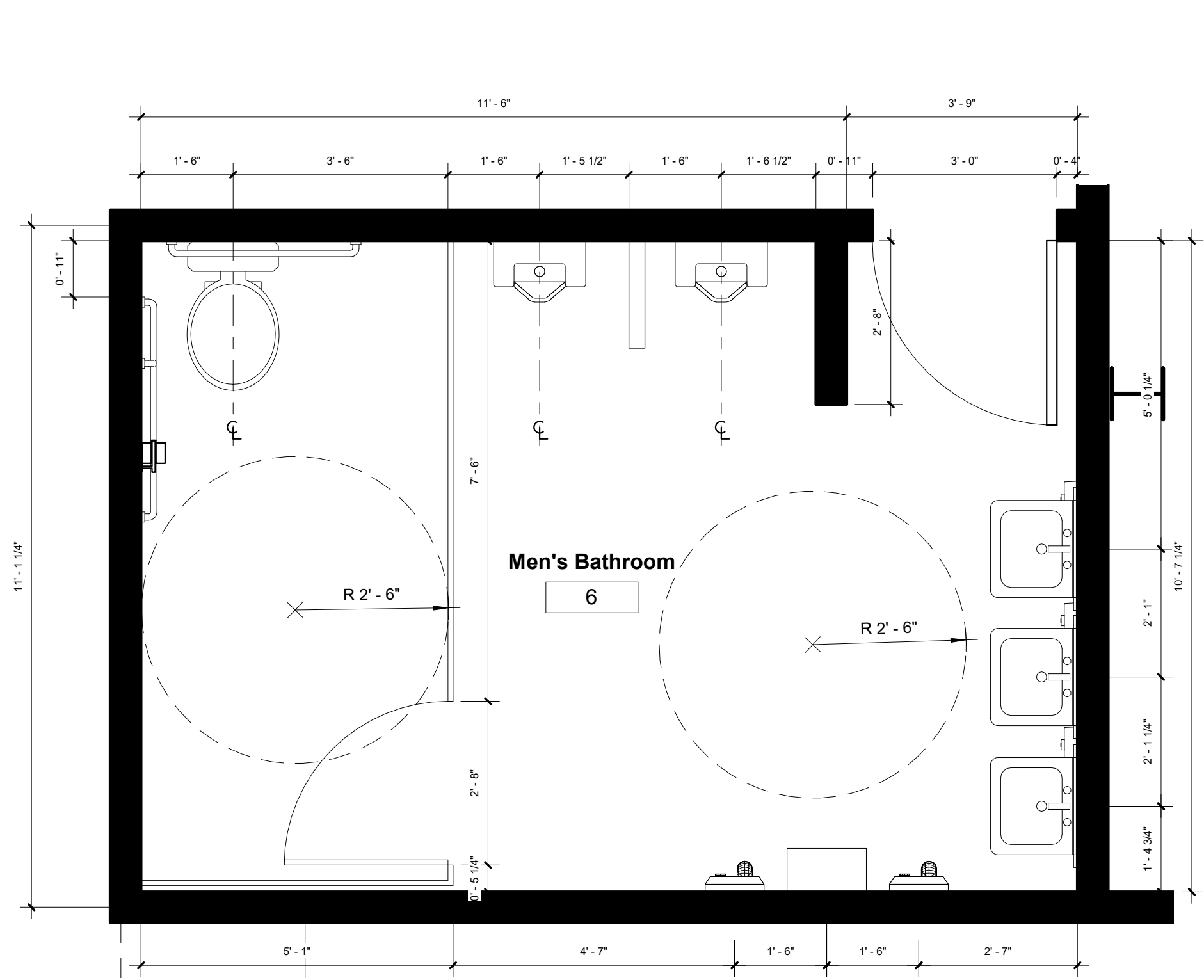




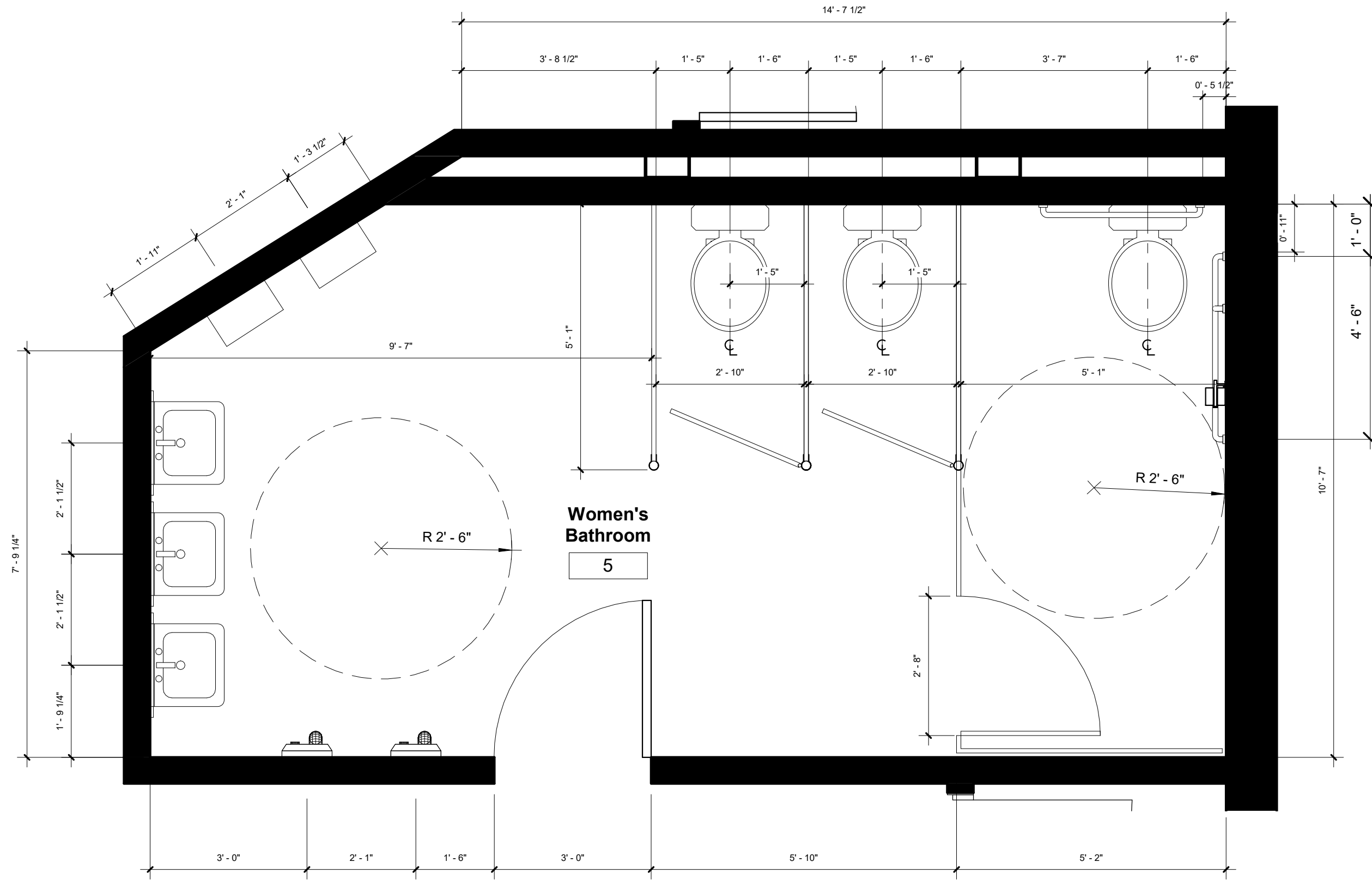
Gabby Saucedo

Warby Parker Headquarters

230 W Broughton Street | Savannah, GA 31401



1 ENLARGED PLANS - MEN'S RESTROOM
1/2" = 1'-0"



2 ENLARGED PLANS - WOMEN'S RESTROOM
1/2" = 1'-0"

Drawn by GS

Date 2-20-2018

ENLARGED PLANS

ID 6.0

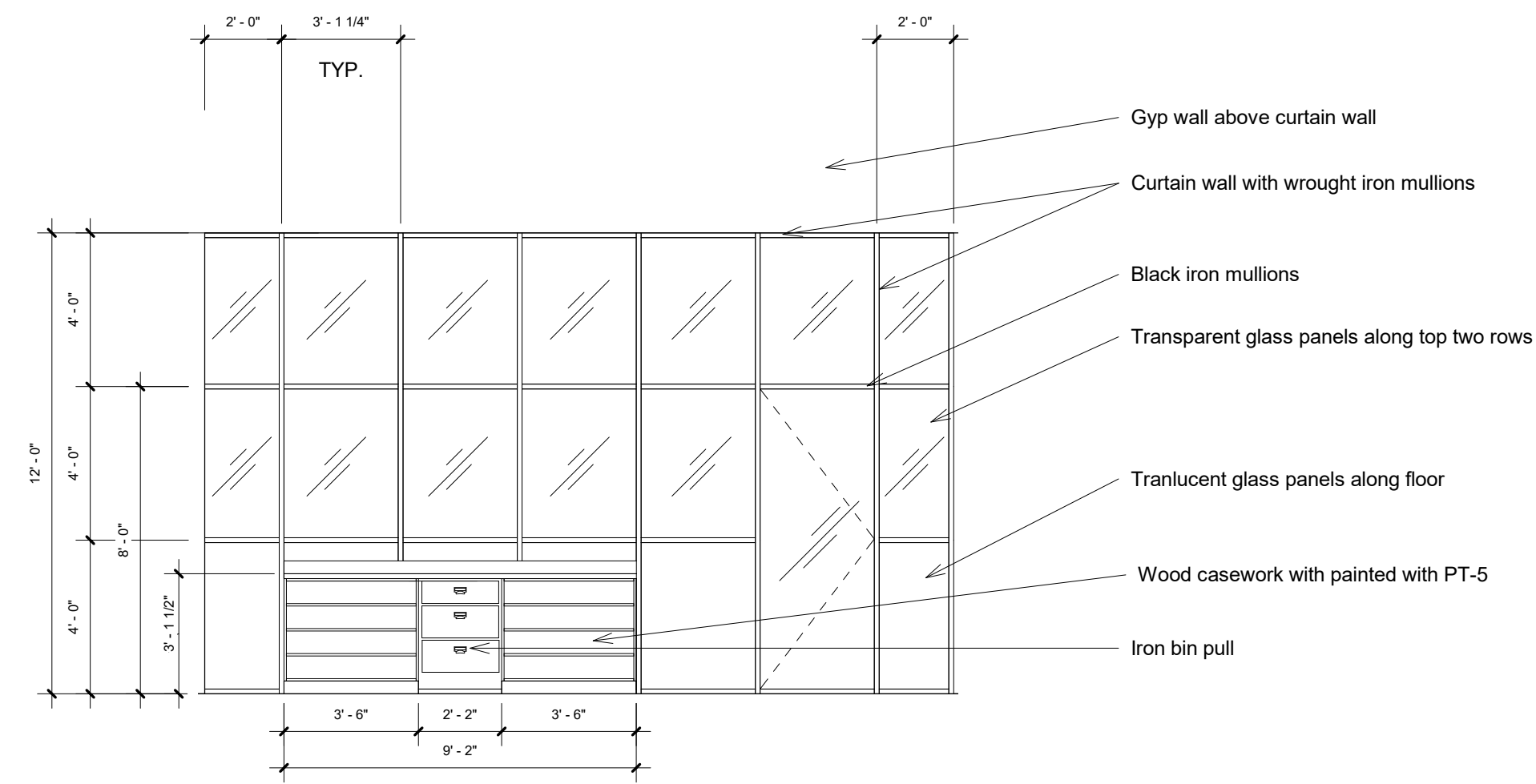
Scale 1/2" = 1'-0"



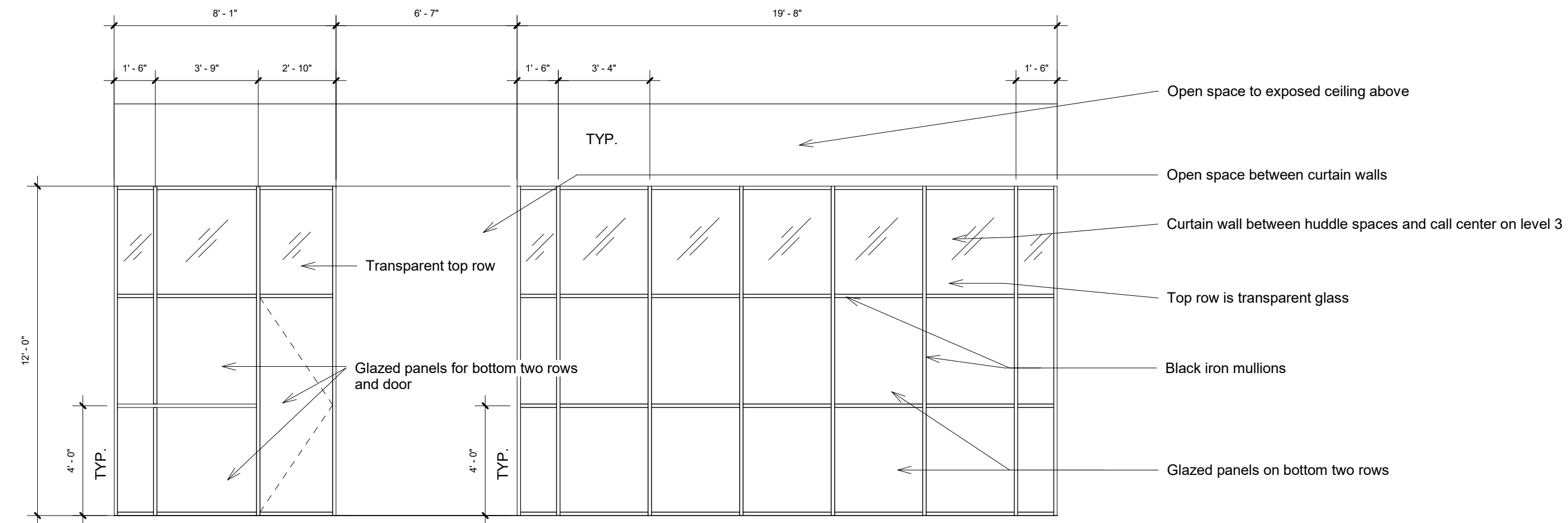
Gabby Saucedo

Warby Parker Headquarters

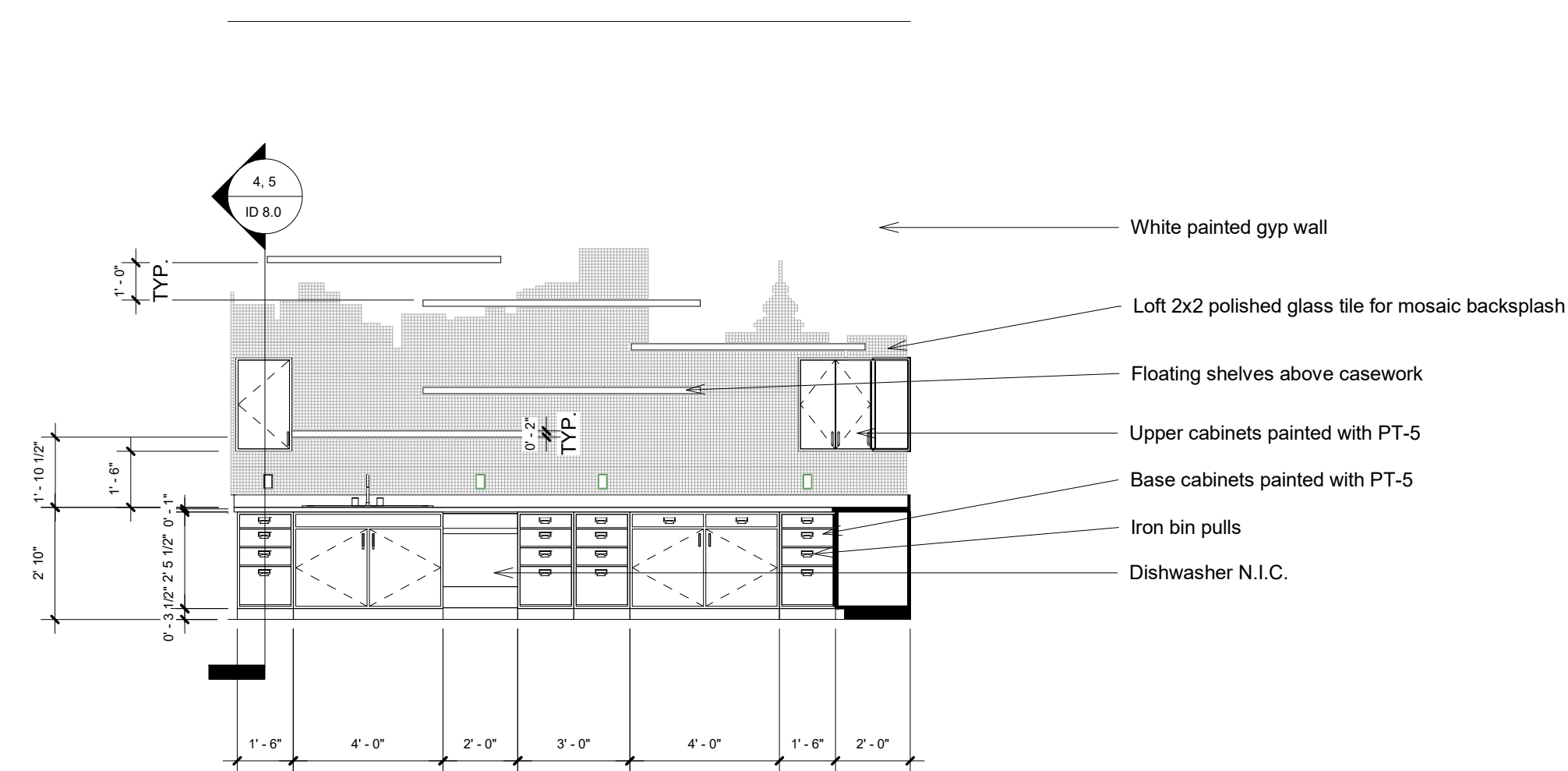
230 W Broughton Street | Savannah, GA 31401



① ELEVATION - COPY/PRINT
1/4" = 1'-0"



② ELEVATION - HUDDLE PARTITION
1/4" = 1'-0"



③ ELEVATION - KITCHENETTE
1/4" = 1'-0"

Drawn by Author

Date 2-20-2018

ELEVATIONS

ID 7.0

Scale 1/4" = 1'-0"



Gabby Saucedo

Warby Parker Headquarters

230 W Broughton Street | Savannah, GA 31401

Drawn by GS

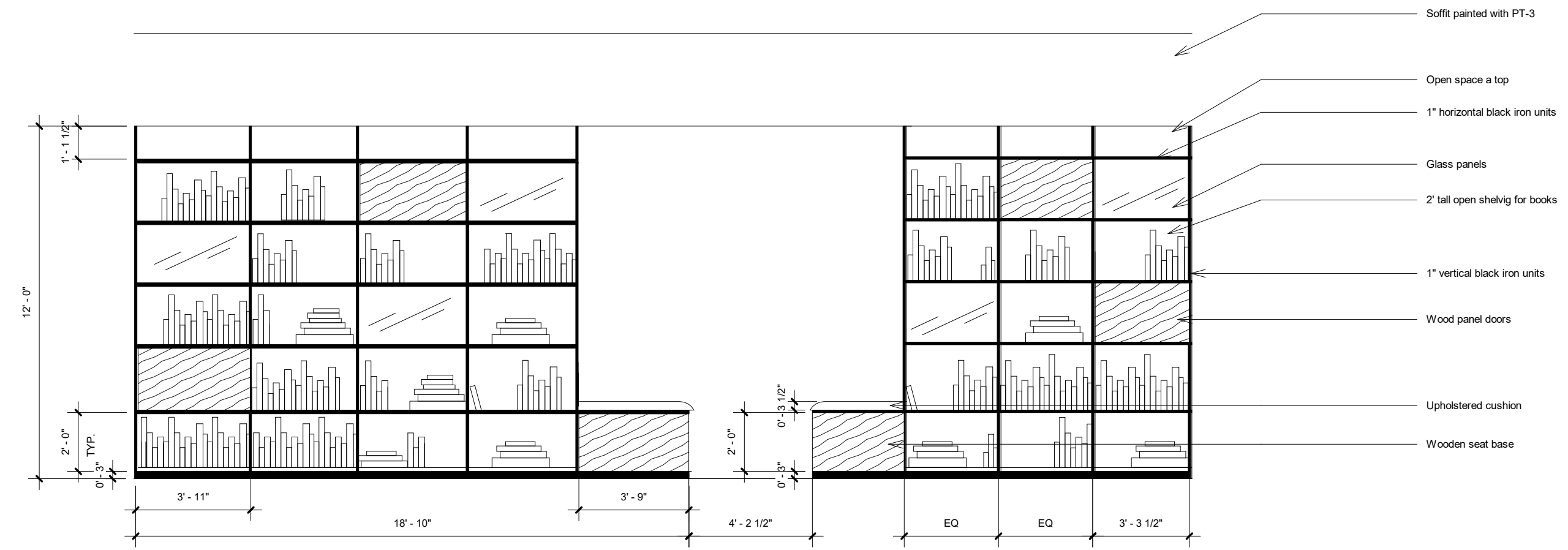
Date 2-20-2018

ELEVATIONS

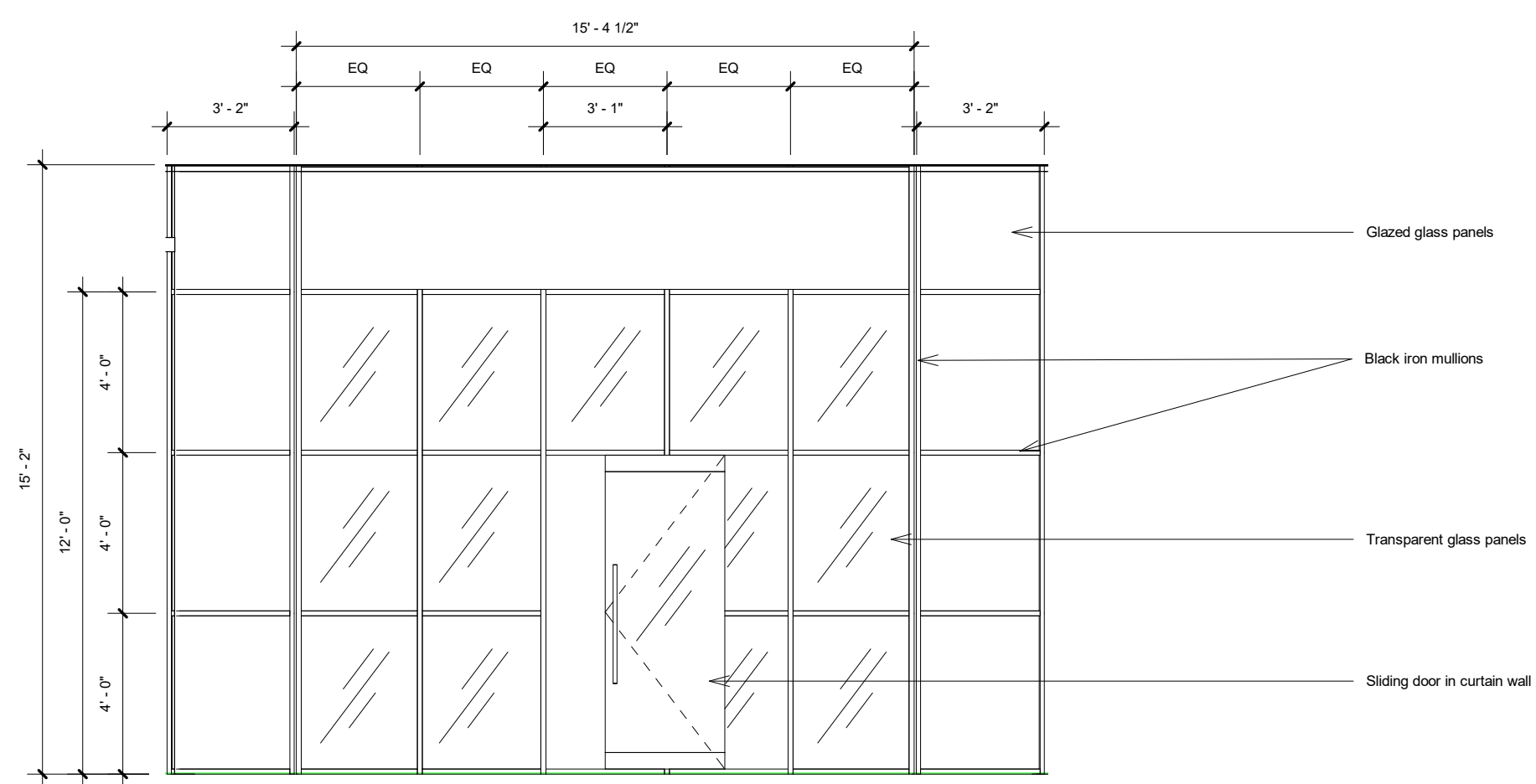
ID 7.1

Scale 1/4" = 1'-0"

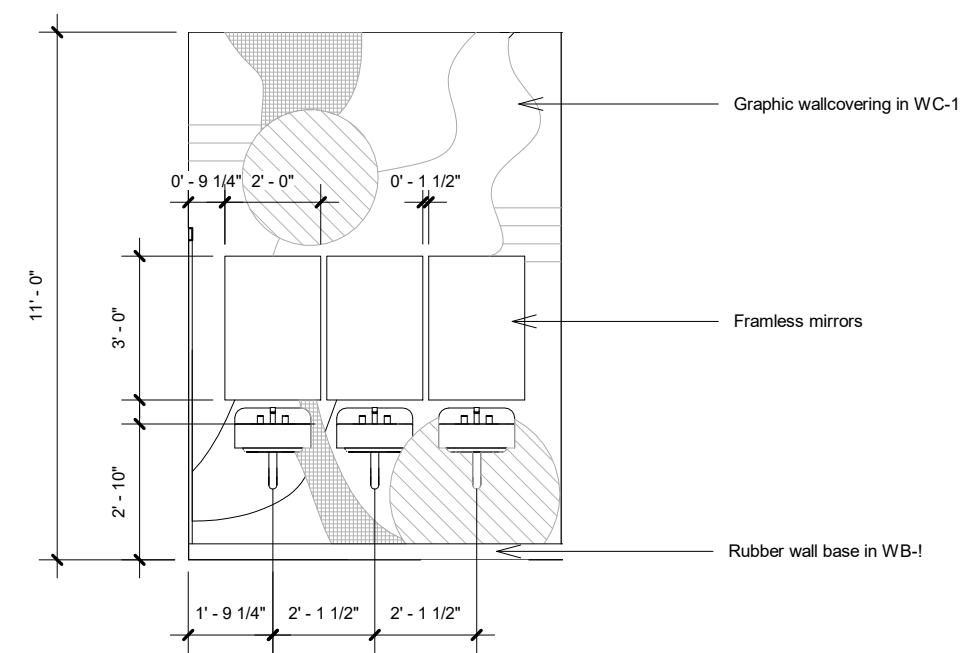
2/28/2019 12:35:14 AM



1 ELEVATION - BOOKCASE PARTITION
1/4" = 1'-0"



2 ELEVATION - SMALL CONFERENCE
1/4" = 1'-0"



3 ELEVATION - WOMEN'S RESTROOM
1/4" = 1'-0"



Gabby Saucedo

Warby Parker Headquarters

230 W Broughton Street | Savannah, GA 31401

Drawn by Author

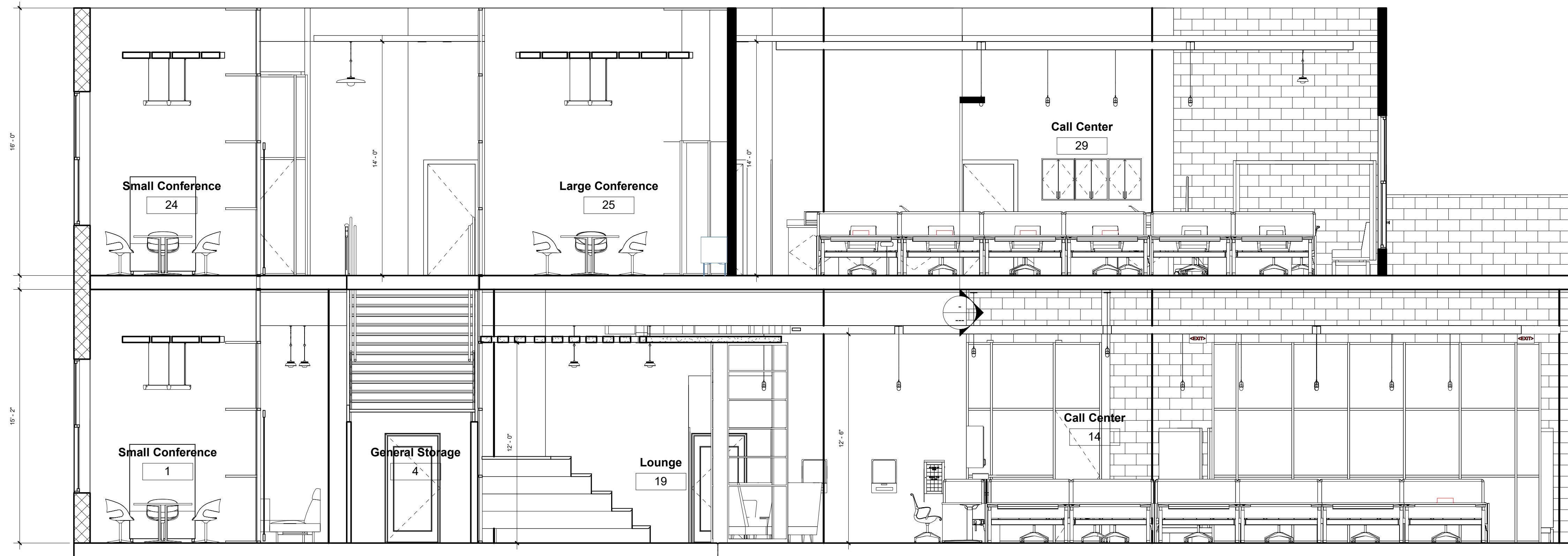
Date 2-20-2018

BUILDING SECTIONS

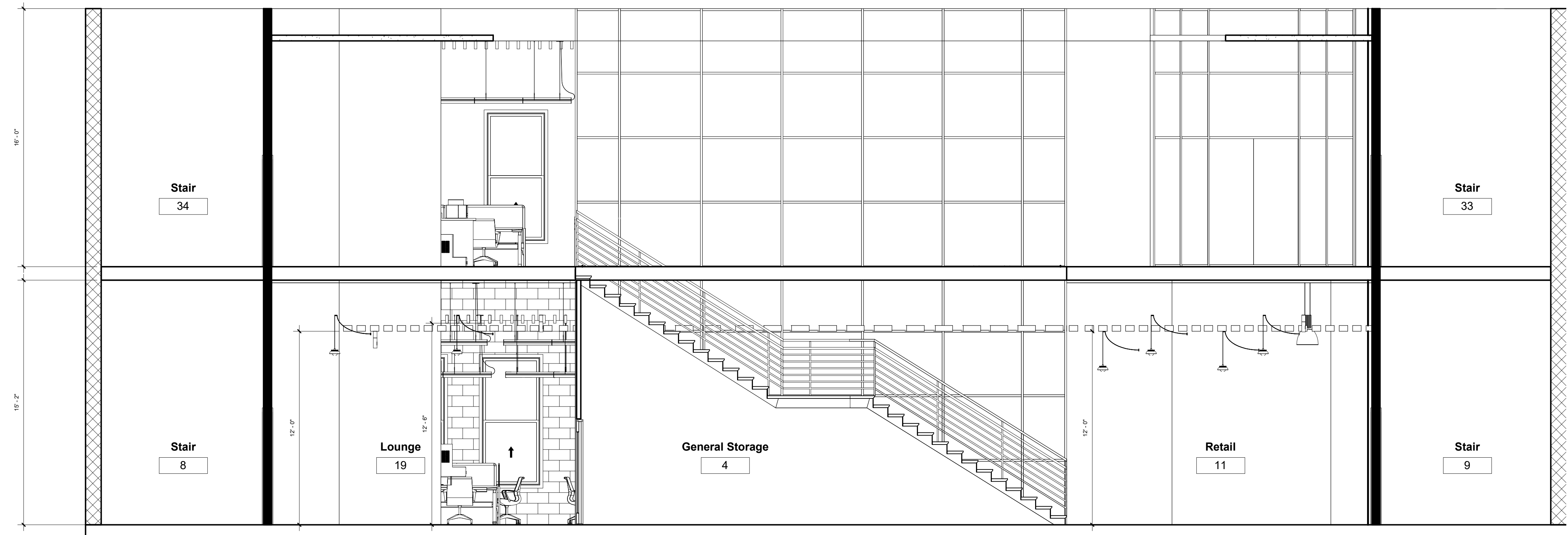
ID 7.2

Scale 1/4" = 1'-0"

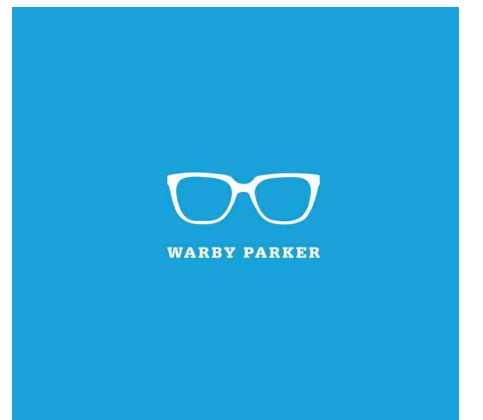
2/28/2018 12:47:36 PM



① LATITUDINAL SECTION
1/4" = 1'-0"



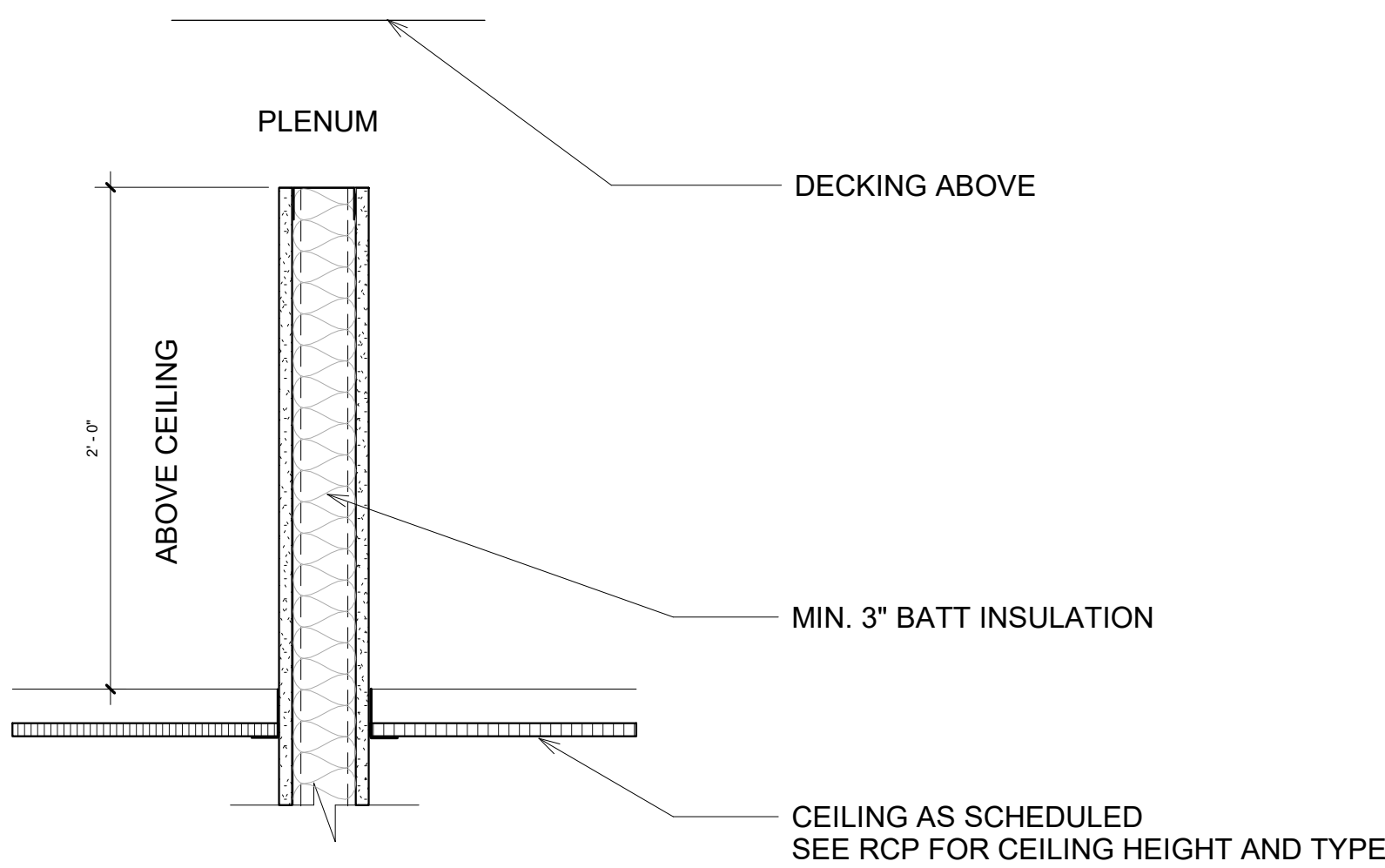
② LONGITUDINAL SECTION
1/4" = 1'-0"



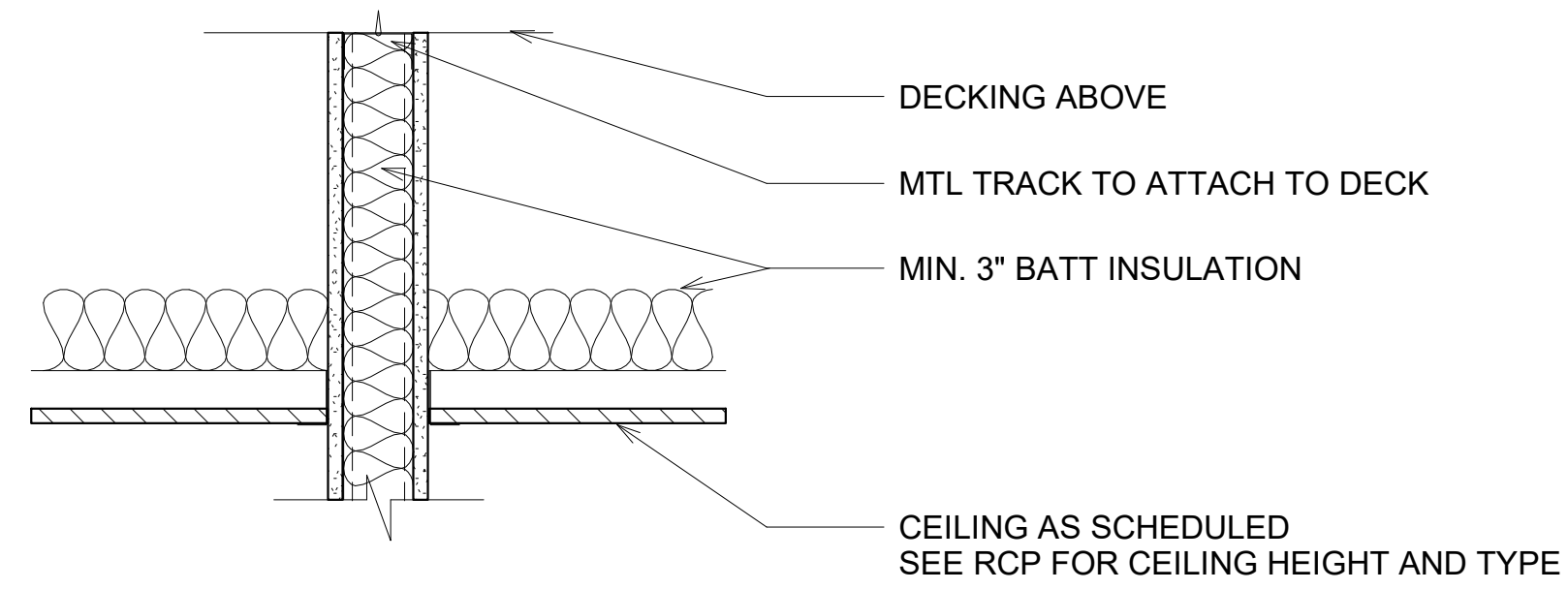
Gabby Saucedo

Warby Parker Headquarters

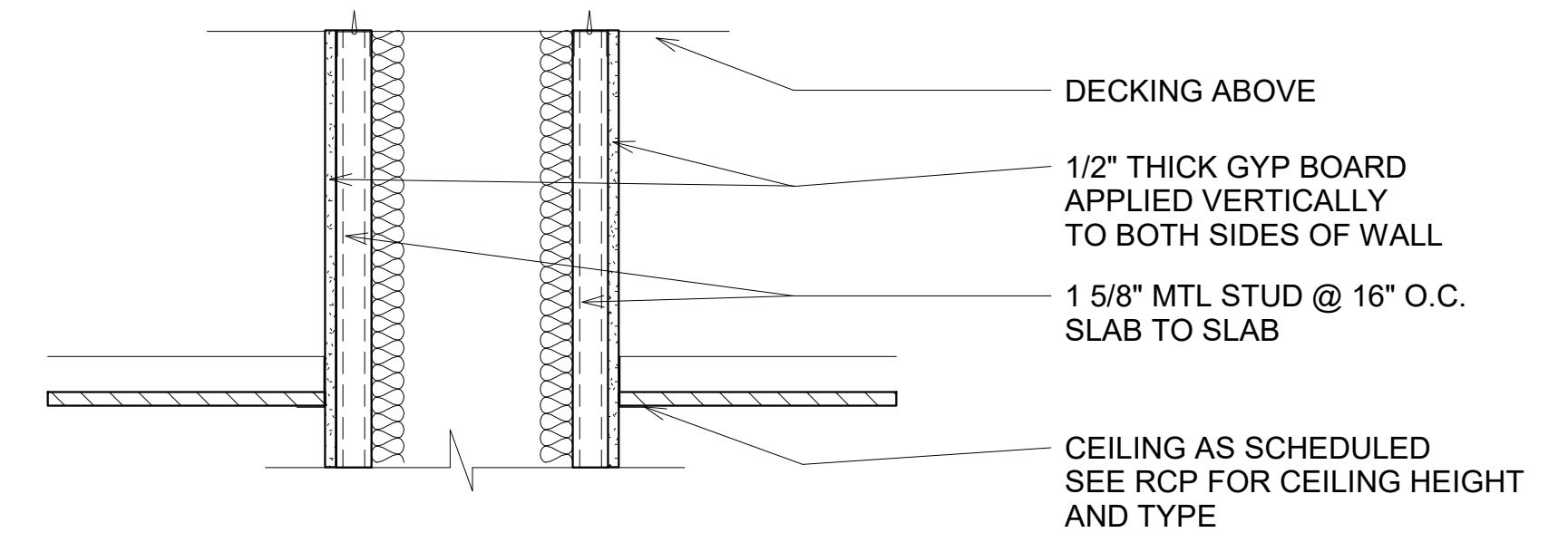
230 W Broughton Street | Savannah, GA 31401



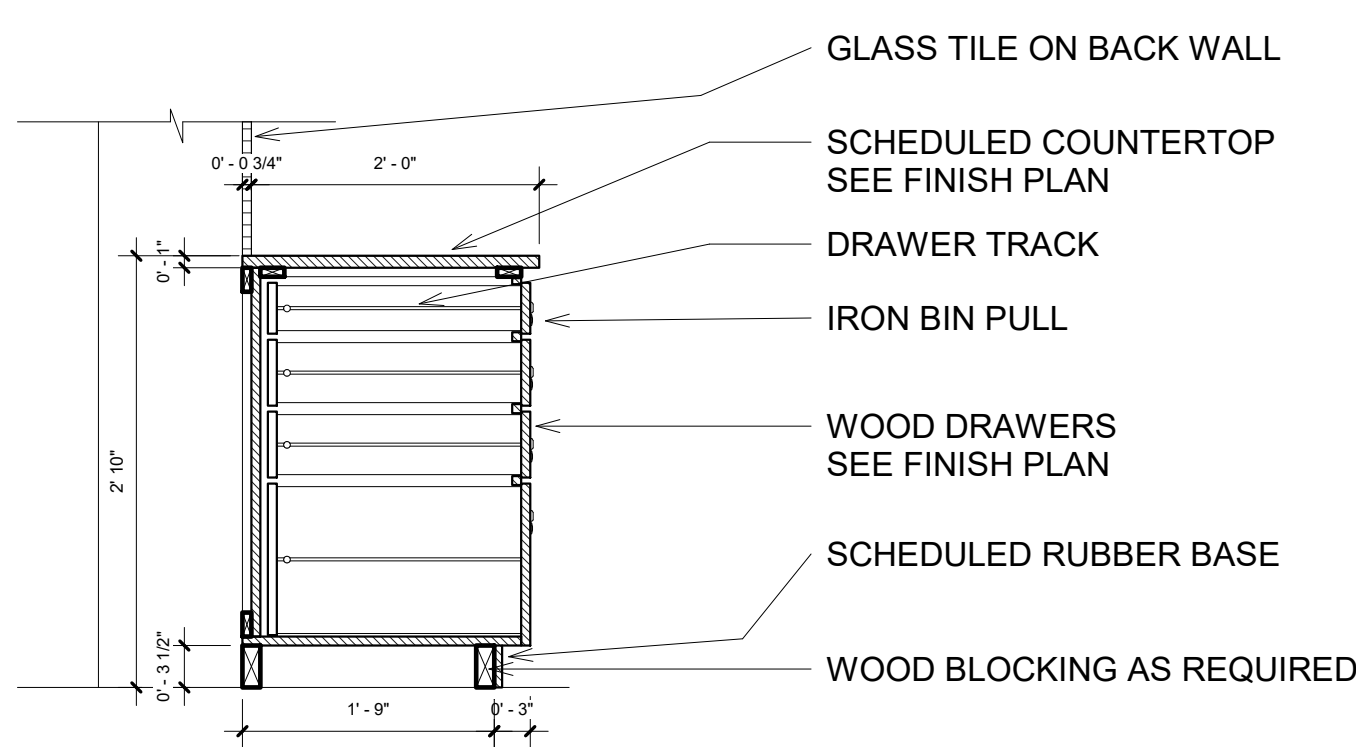
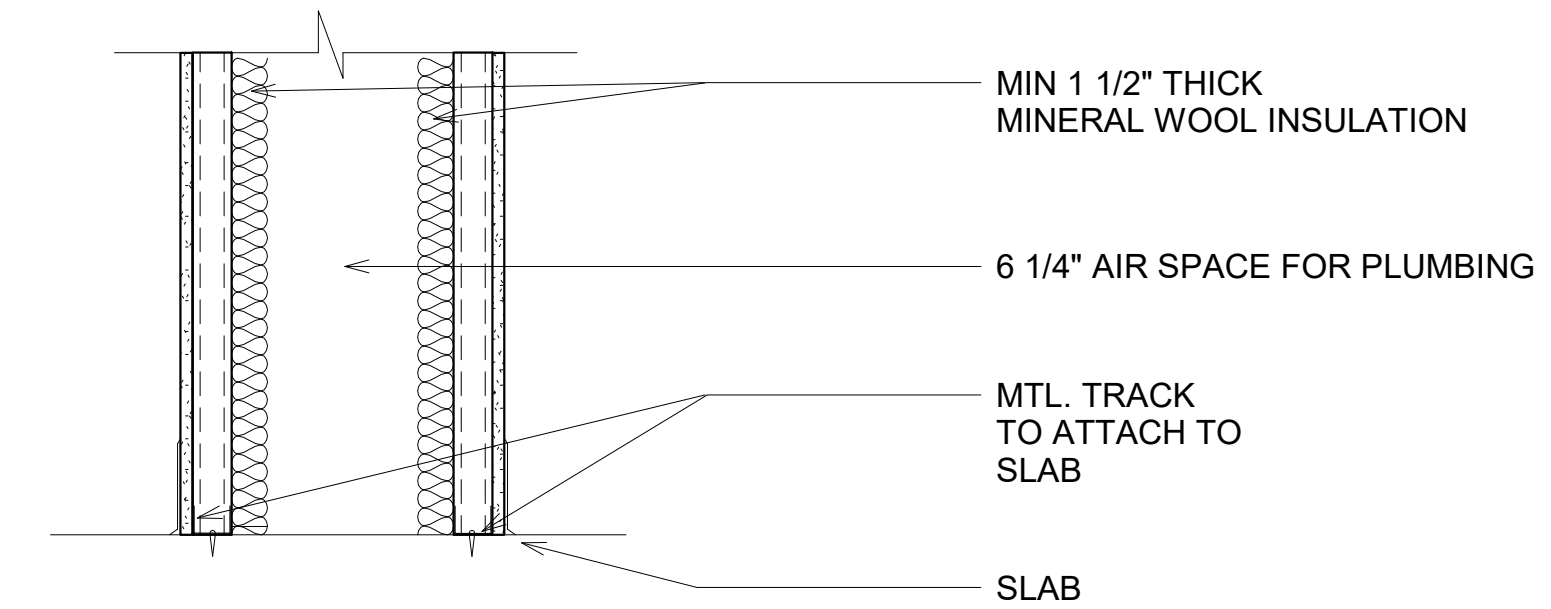
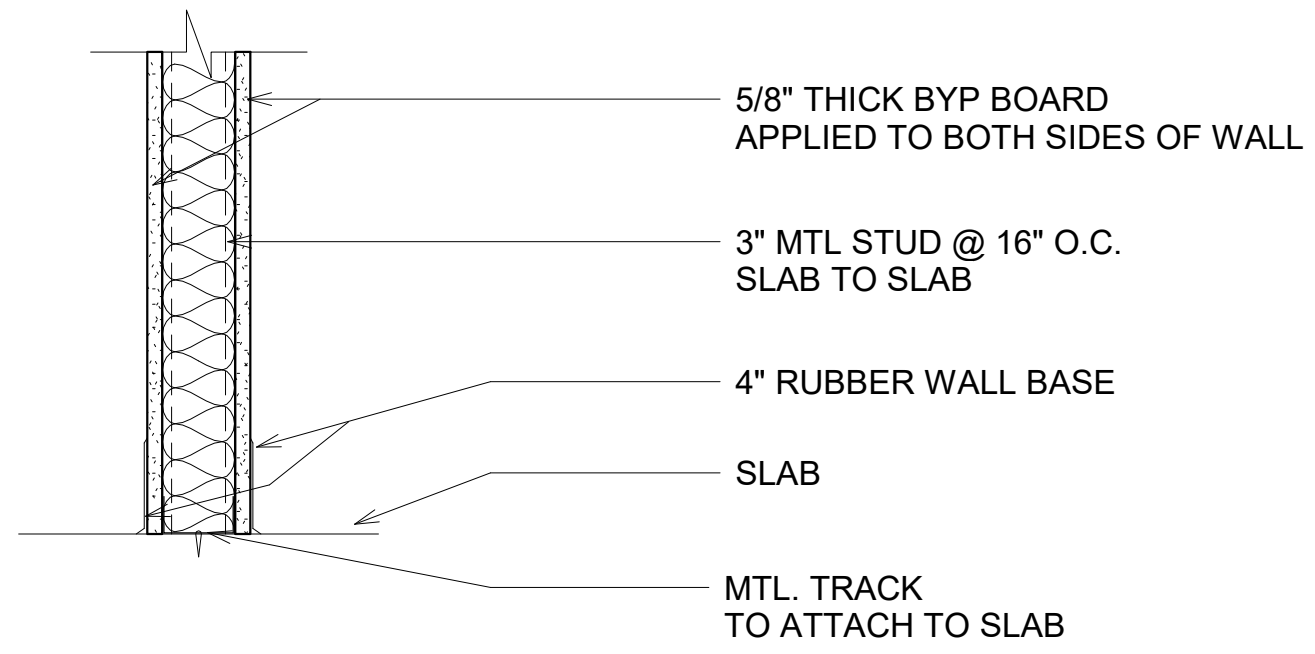
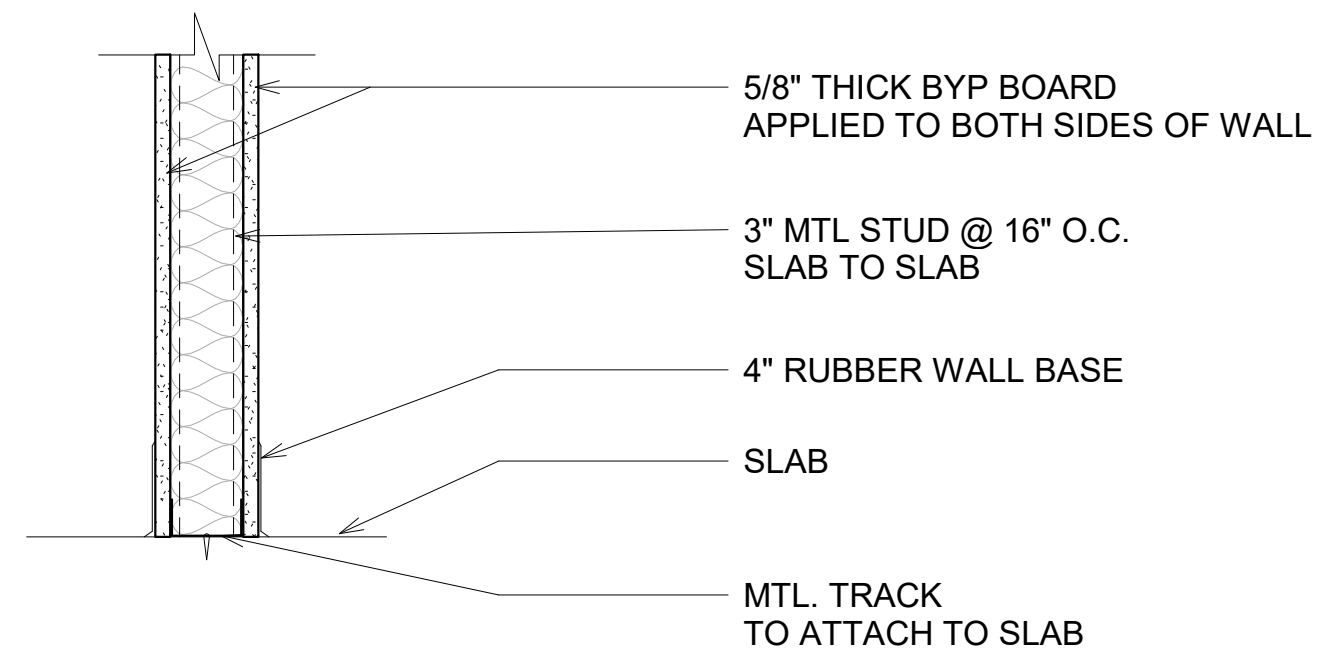
① TYPE A
1 1/2" = 1'-0"



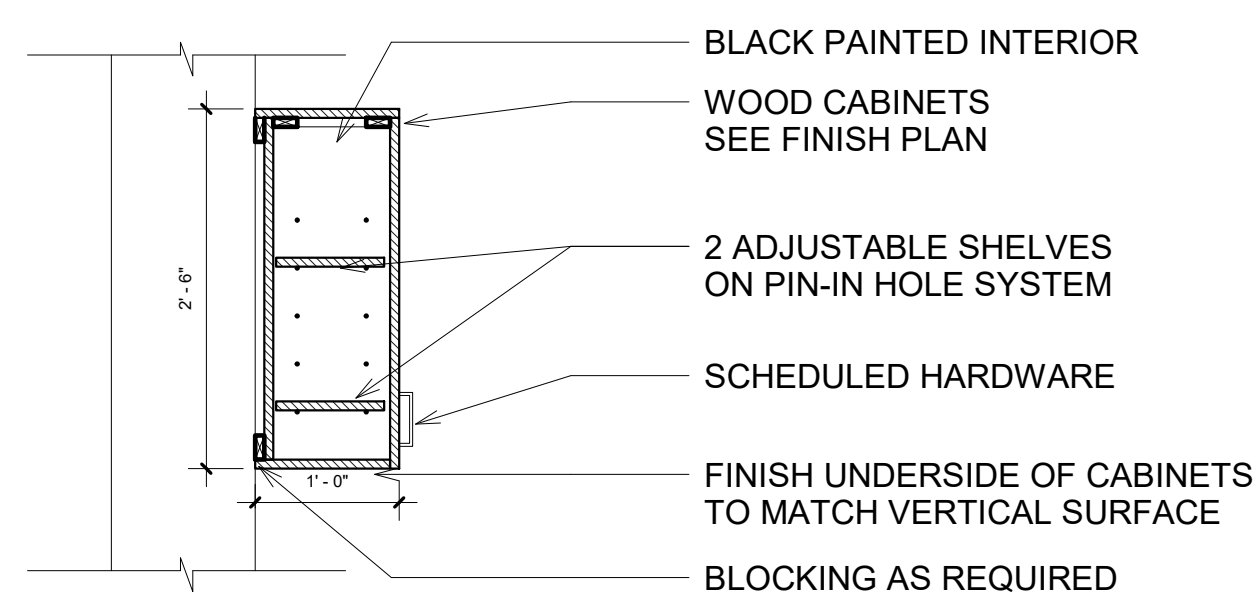
② TYPE B
1 1/2" = 1'-0"



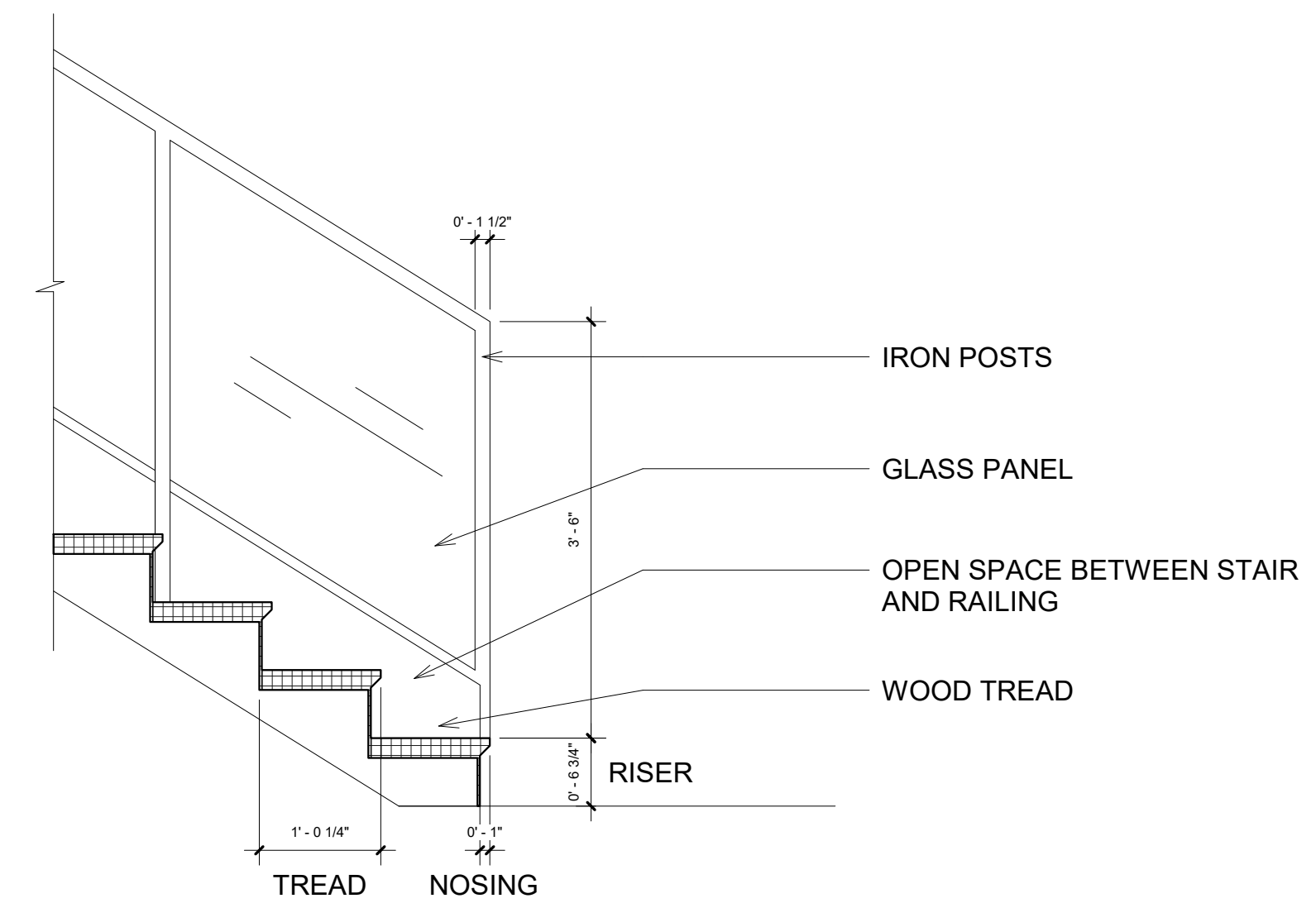
③ TYPE C
1 1/2" = 1'-0"



④ Kitchenette Base Cabinet
3/4" = 1'-0"



⑤ Kitchenette Wall Cabinet
3/4" = 1'-0"



⑥ Grand Staircase
3/4" = 1'-0"

Drawn by GS

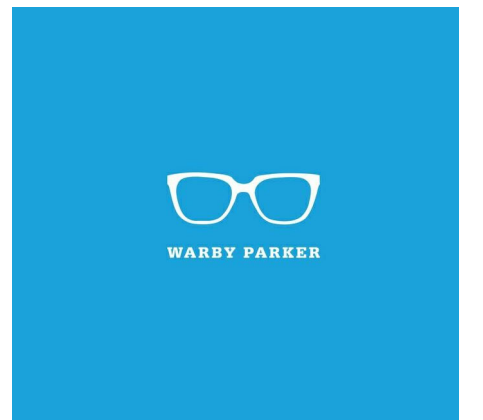
Date 2-20-2018

WALL SECTIONS AND MILLWORK

ID 8.0

Scale As indicated

2/27/2018 7:17:27 PM



Gabby Saucedo

Warby Parker Headquarters

230 W Broughton Street | Savannah, GA 31401

Door Schedule						
Mark	Level	Width	Height	Thickness	Finish	Comments
1	LEVEL 3	3' - 0"	7' - 0"	0' - 2"		
2	LEVEL 3	3' - 0"	6' - 8"	0' - 2"		
3	LEVEL 3	3' - 2 13/16"	6' - 6 5/16"			
4	LEVEL 3	2' - 11 3/8"	7' - 9 3/4"			
5	LEVEL 3	2' - 11 7/16"	7' - 6 3/16"	0' - 1 3/16"		
6	LEVEL 4	2' - 10 1/2"	6' - 9 3/4"			
7	LEVEL 4	3' - 11 1/4"	7' - 0"	0' - 3 15/16"	Polish Finish, Powder-Coated	
8	LEVEL 3	3' - 0"	6' - 8"	0' - 2"		
9	LEVEL 3	3' - 0"	7' - 0"	0' - 2"		
10	LEVEL 3	2' - 7 3/4"	7' - 9 3/4"			
11	LEVEL 4	3' - 0"	6' - 8"	0' - 2"		
12	LEVEL 3	3' - 2 13/16"	6' - 6 5/16"			
13	LEVEL 4	3' - 0"	6' - 8"	0' - 2"		
14	LEVEL 3	2' - 11 3/8"	7' - 10 1/2"			
15	LEVEL 4	2' - 10"	6' - 8"	0' - 2"		
16	LEVEL 4	2' - 10 1/2"	6' - 9 3/4"			
17	LEVEL 4	2' - 11 7/16"	7' - 6 3/16"	0' - 1 3/16"		
18	LEVEL 4	3' - 0 13/16"	7' - 9 3/4"			
19	LEVEL 4	2' - 11 5/16"	7' - 9 3/4"			
20	LEVEL 4	3' - 11 1/4"	6' - 7 1/2"	0' - 3 15/16"	Polish Finish, Powder-Coated	
21	LEVEL 4	3' - 0"	6' - 8"	0' - 2"		
22	LEVEL 4	2' - 10 1/2"	6' - 9 3/4"			
23	LEVEL 4	2' - 10"	6' - 8"	0' - 2"		
24	LEVEL 4	3' - 0"	6' - 8"	0' - 2"		
25	LEVEL 4	6' - 4 13/16"	7' - 9 3/4"			
26	LEVEL 3	2' - 11 11/16"	7' - 9 3/4"			
27	LEVEL 4	2' - 10 1/2"	6' - 9 3/4"			
28	LEVEL 4	3' - 0"	6' - 8"	0' - 2"		

Finish Schedule						
Abbreviation	Finish	Manufacturer	Pattern/Style	Color	Size	Notes
ACT-1	Acoustic Ceiling Tile	Armstrong	Solid	White	2' - 0"	
AP-1	Xorel Artform Acoustic Panels	Carnegie	Meteor	Flashback	1' - 8"	
BA-1	Optima Acoustic Baffles	Armstrong	Solid	White	12' - 0"	
CMT-1	Cement Tile	Atrafloor	Jester		5' - 0"	
CMT-2	Cement Tile	Atrafloor	Zuri		5' - 0"	
CPT-1	Carpet Tile	Flor	Lilting	Multi	2' - 0"	
CPT-2	Carpet Tile	Flor	Twisted Spokes	Maize	2' - 0"	
CPT-3	Carpet Tile	Flor	Tisted Spokes	Azul	2' - 0"	
CT-1	Cork Tile	US Floors	Cork Deco	Salon Duterra	4' - 0"	
CT-2	Cork Tile	US Floors	Cork Deco	Salon Dulsia	4' - 0"	
GYP	Gypsum					
PT-1	Zero VOC Paint	AFM Safecoat		0017 Lunar Moon		
PT-2	Zero VOC Paint	AFM Safecoat		0620 Star Studded		
PT-3	Zero VOC Paint	AFM Safecoat		0628 Illuminating Experience		
PT-4	Zero VOC Paint	AFM Safecoat		0529 Black Licorice		
PT-5	Zero VOC Paint	AFM Safecoat		0429 Misty Dawn		
PT-6	Zero VOC Paint	AFM Safecoat		0255 Navy Night		
RB-1	Rubber Wall Base	FLEXCO		Black	0' - 4"	
RB-2	Rubber Wall Base	FLEXCO		Blue Shadow	0' - 4"	
RB-3	Rubber Wall Base	FLEXCO		True White	0' - 4"	
WC-1	Wallcovering	Wall Shoppe	El Quijote	Ballet Slipper	2' - 3"	
WC-2	Wallcovering	Wall Shoppe	El Quijote	Blue and Coral	2' - 3"	
WD-1	Wood	EcoFusion	Woven Bamboo	Summer Breeze	4' - 0"	
WD-2	Wood	EcoFusion	Woven Bamboo	Grey Ash	4' - 0"	

Drawn by GS

Date 2-20-2018

SCHEDULES

ID 9.0

Scale