



# WALLPACK AREA LUMINAIRE

## Project Information

Type \_\_\_\_\_

Name \_\_\_\_\_

Voltage \_\_\_\_\_

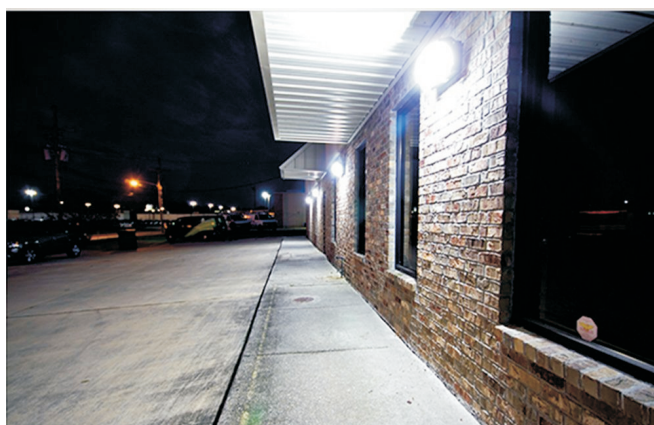
## Product Description

Wallpack Light led luminaire has a beautiful low profile design intended for indoor industrial/warehouse/commercial lighting applications LED driver and thermal management. High-performance illumination that lasts 50,000HRS. It's ideal for replacing 80-200W Metal Halide, with typical energy savings of 80%.



## Application

General area and security lighting, etc.



## Electric Characteristic

Specification/Model	LS-WP41W	LS-WP60W	LS-WP80W	LS-WP100W
LED Chips	Philip 3030			
Input power	41W	60W	80W	100W
Lumens output	4920-5330LM	7200-7800LM	9600-10400LM	12000-13000LM
Efficiency	120-130LM/W	120-130LM/W	120-130LM/W	120-130LM/W
CRI	> 80Ra			
Color Temperature	3000/4000/5000K			
Input voltage	100-277V UL Driver			
Lighting beam	130D			
Working temperature	-30+60°C			
Junction temperature	<75°C			
lamps efficiency	≥90%			
Certificates	ETL,CETL,DLC			
Equivalent	80-100W MH/HPS	120-150W MH/HPS	150-180W MH/HPS	180-200W MH/HPS

## Ordering Information

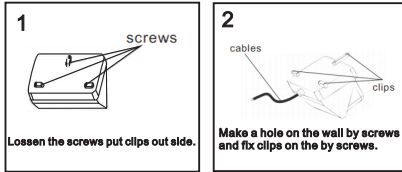
Example: LS-WP40W-30K-N-T

Product	Power	Replacement	Color Temperature	Photocell	Furnish
ALCWP41W	41W	80-100W MH/HPS	30K 3000K 40K 4000K 50K 5000K	N not photocell Y yes photocell	T-Black B-Brown
ALCWP60W	60W	120-150W MH/HPS			
ALCWP80W	80W	150-180W MH/HPS			
ALCWP100W	100W	180-200W MH/HPS			



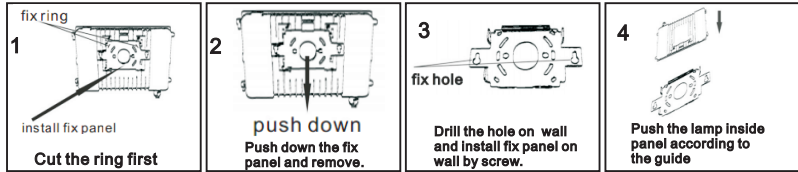
## Installation Options

### 1. 40W 60W wallpack light installation guide

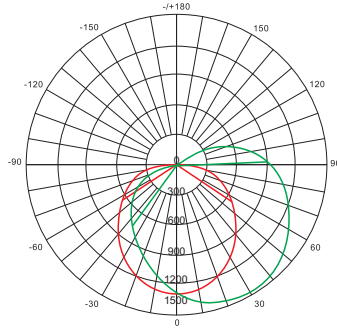


3. Connect the fixture wire to electricity wire L to L, N to N, Ground to Ground.

### 2. 80W 100W wallpack light installation guide



## Photometrics

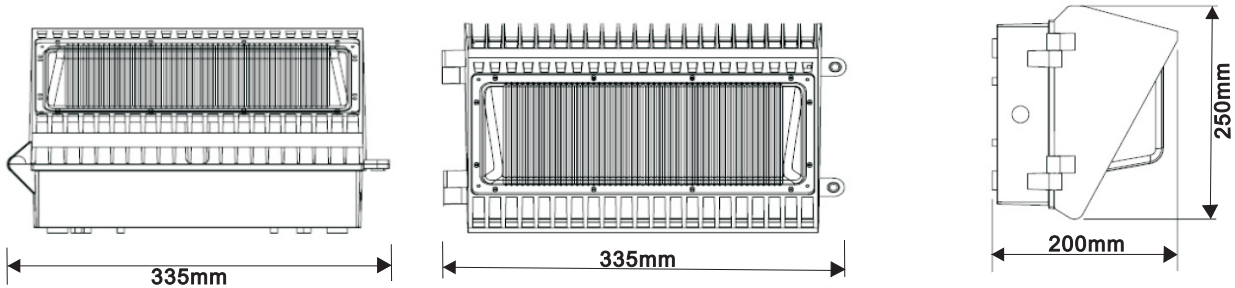


## Projected LED Lumen Maintenance

Operating hours	0	25000	50000
Lumen maintenance factor	1	0.91	0.8

Data references the extrapolated performance projections for the WALLPACK LED platform in a 25°C ambient, based on 10,000 hours of LED testing (tested per IESNA LM-80-08 and projected per IESNA TM-21-11).

## Dimensions:



## After sale Service:

The product refers to electricians knowledge. Please don't disassemble it by yourself. If any quality problem happens, please contact the factory for warranty details.

NOTE: Actual performance may differ as a result of end-user environment and application. All values are without notice.