

CYBER SAFETY: TRENDS AND UPDATES

2019 RISK, HEALTH, & SAFETY FOR ALL CONFERENCE

9.30.19

PRESENTED BY: CARLA BORDA

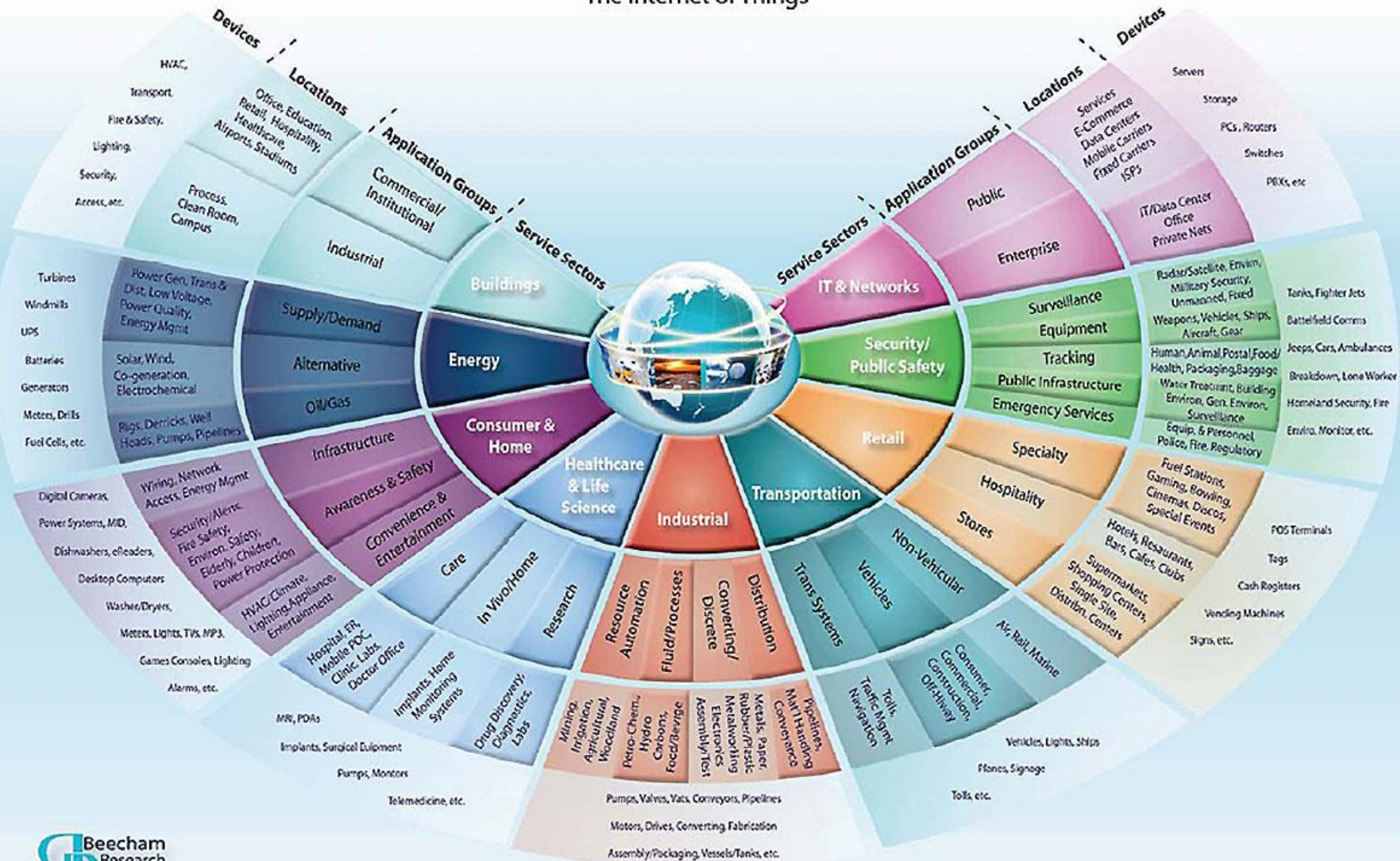


CYBER RISK

The potential of loss or harm related to technical infrastructure or the use of technology within an organization



The Internet of Things



17 BIGGEST DATA BREACHES EVER



Source: www.paymentsnext.com



Massive data breach hits Capital One, affecting more than 100 million customers

[Kelly Tyko](#), USA TODAY Published 7:42 p.m. ET July 29, 2019 | Updated 5:36 p.m. ET July 30, 2019



#Petya.A #NotPetya

PetyaA, July 4, 2017 - 9:23 pm UTC

u will get my private key to decrypt any harddisk (ex
d with the key

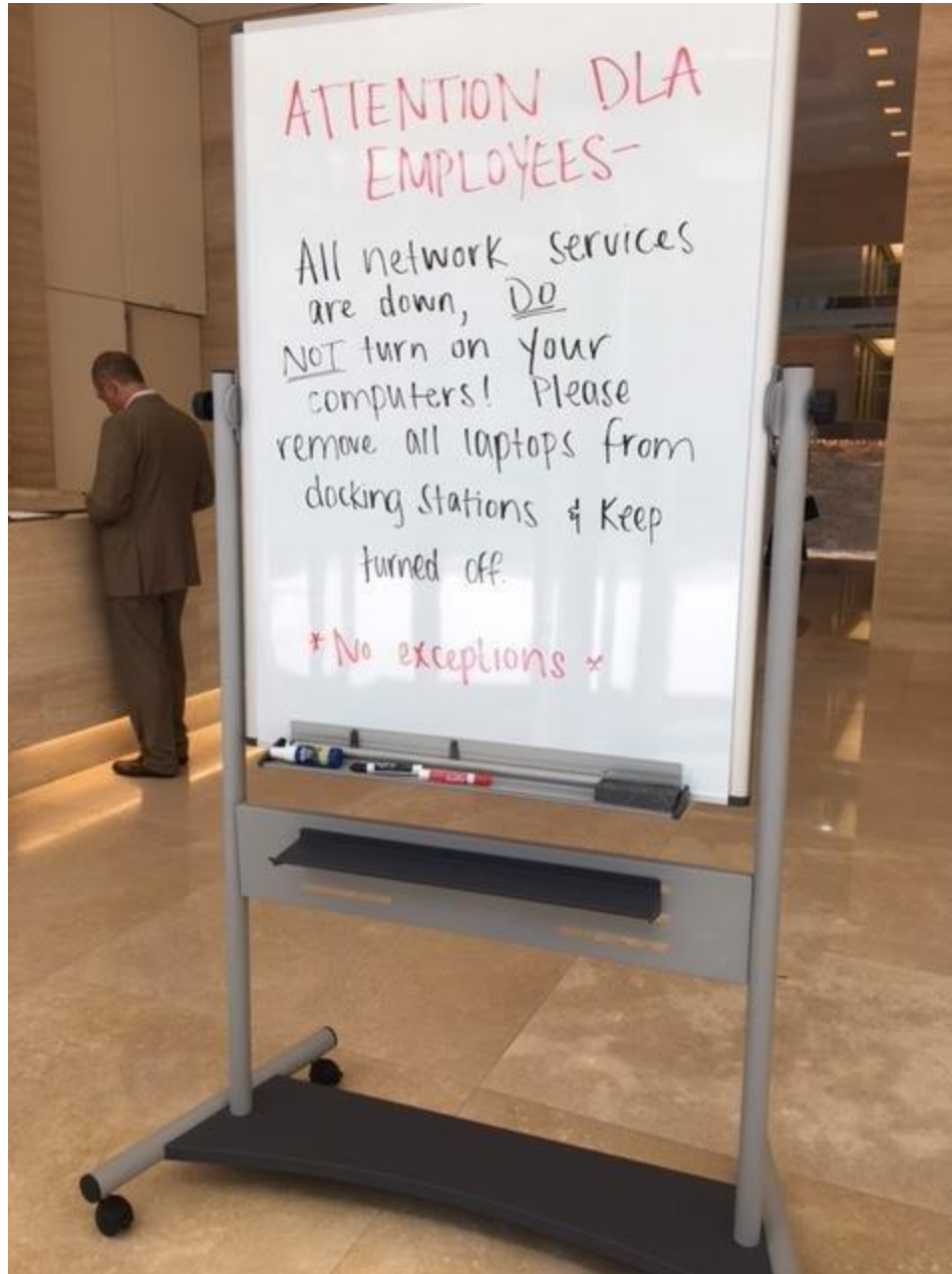
```
BpUlwnLLD_HiTNeq7ASihMRqa6RESE-6bXEMFVWESXo  
ipiQ6cXA9GG1DPEjJWoWu5JWmMy48CxlAt270GgiFHY
```

```
y public.pem -signature public.sha256.dgst public.pem
```

```
h5ggclftv6.onion/signup_user_complete/?id=1trno4d6hir  
onion/ca.crt
```

```
2:79:38:3E:9B:0F:EE:DF:EB:D6:45:92:47:0A:05:0E:9E:B8
```



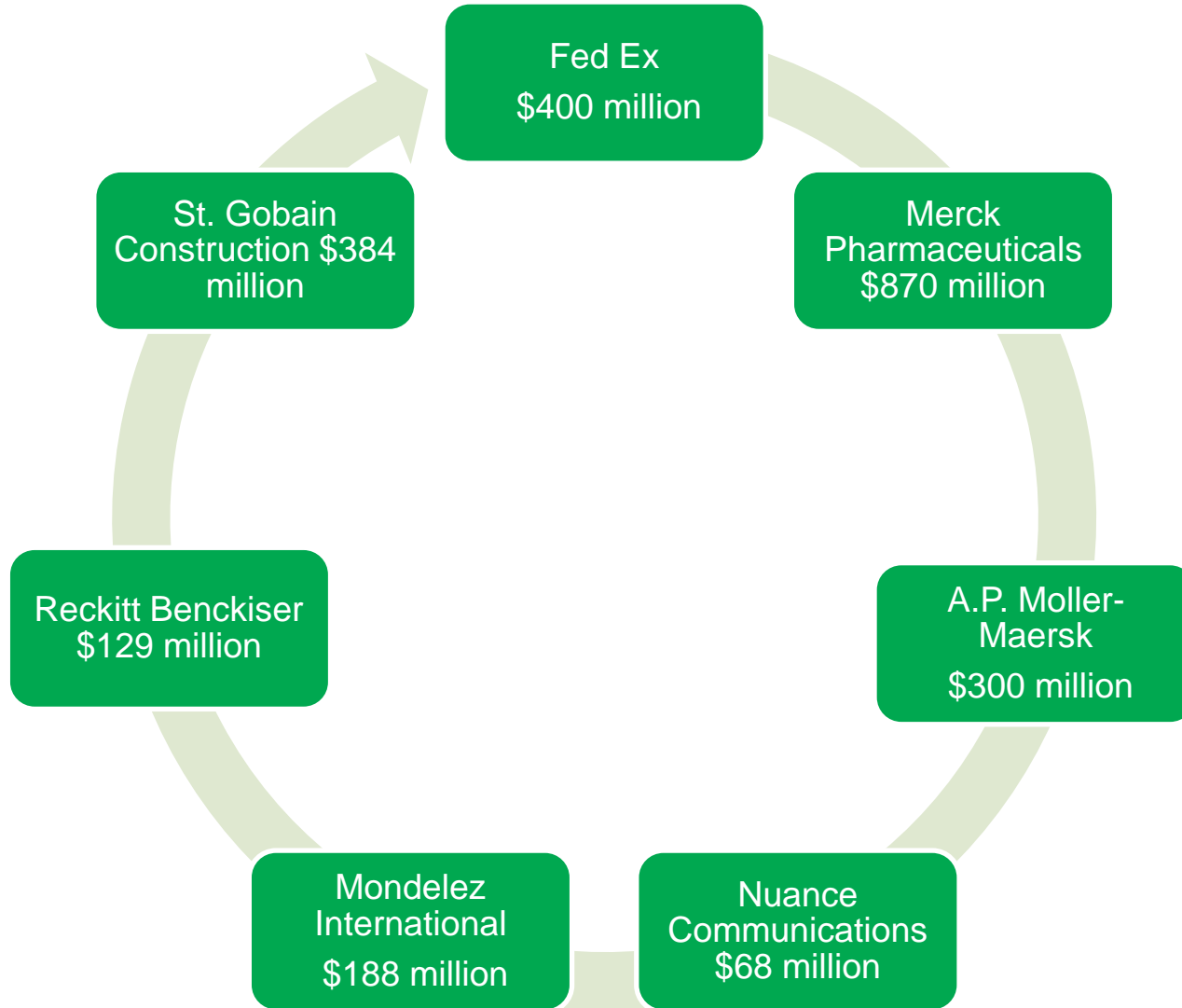


4,000 SERVERS

45,000 COMPUTERS

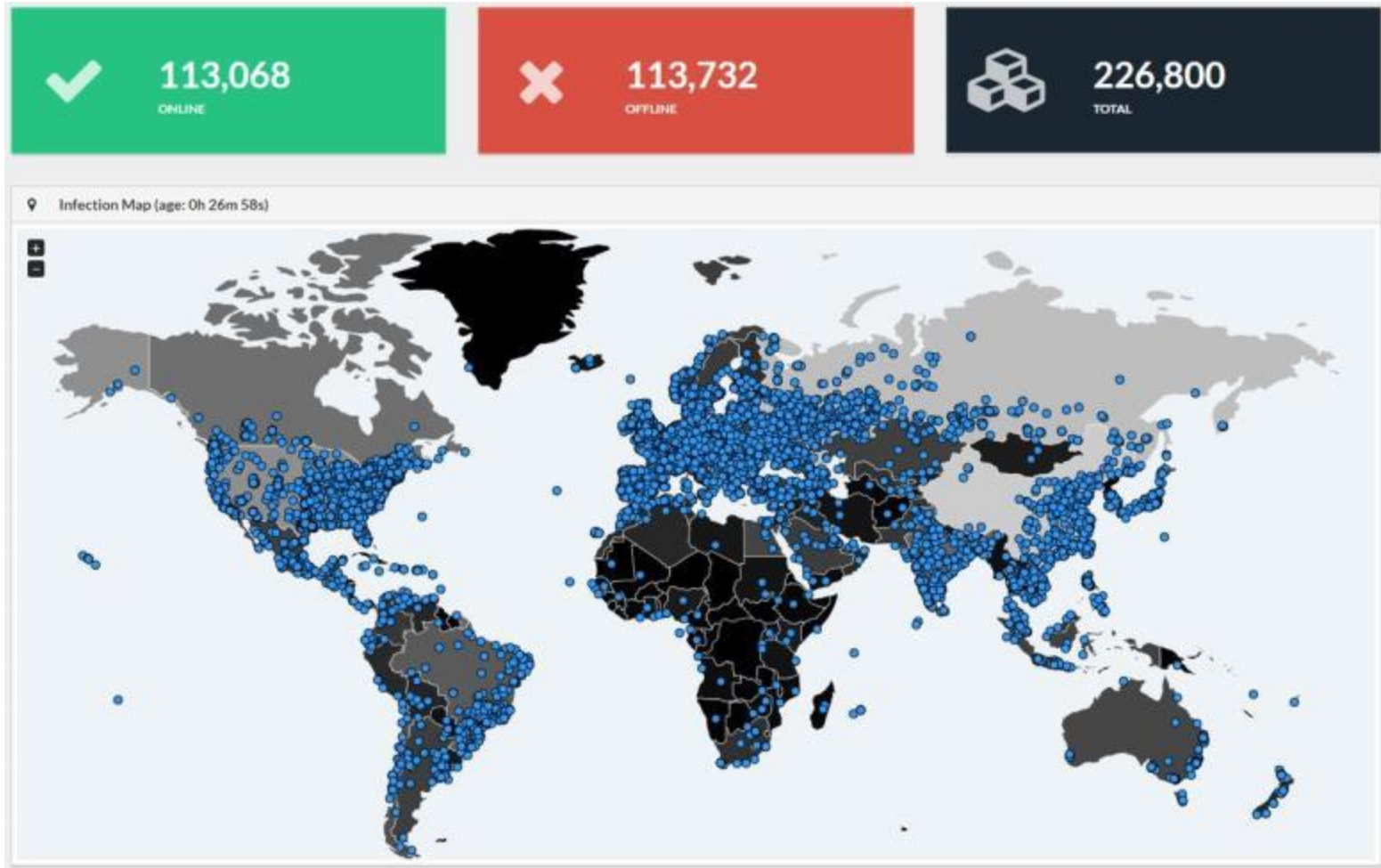
2500 APPLICATIONS





24 HOURS OF WANNACRY INFECTION

CRIPPLED 200,000 COMPUTERS IN 160 COUNTRIES COSTING BETWEEN \$4 AND \$8 BILLION



NORSK HYDRO CYBER ATTACK

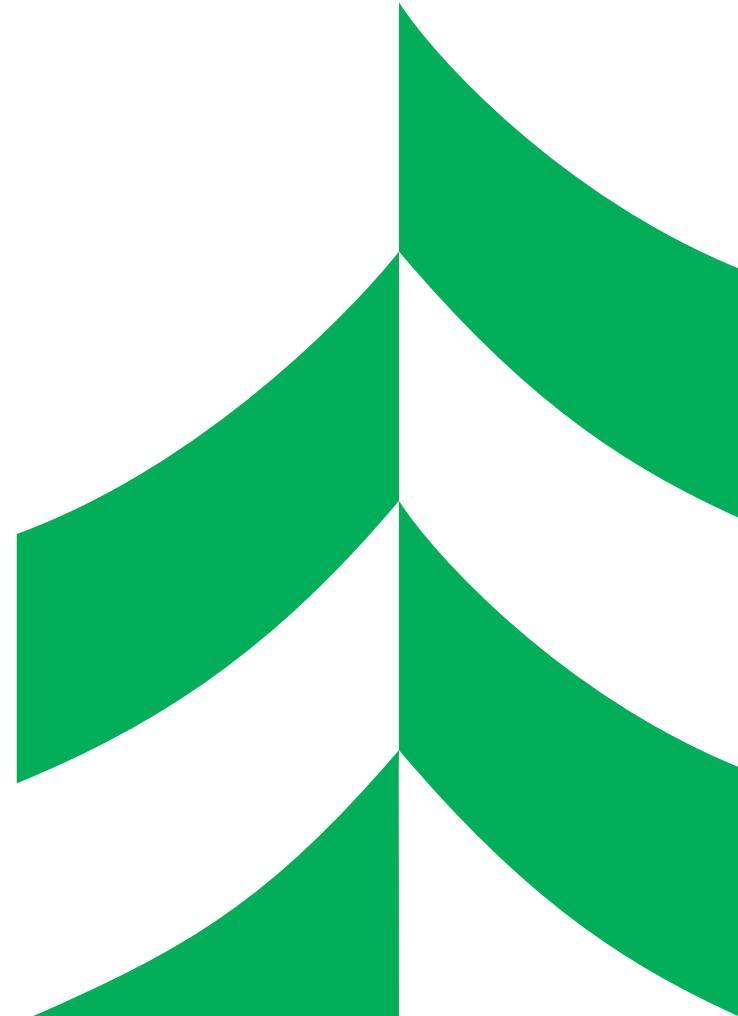
Norwegian Aluminum Producer

Ransomware infection LockerGoga infected all workstations at the same time

Costs exceed \$75 million



**YOU CAN OUTSOURCE THE
FUNCTION
BUT NOT THE RISK**



WHAT DO YOU OUTSOURCE?



“Data owner” is company
who **originally had the data**

Data owner has liability for
privacy no matter where data is compromised!



93% increase in the average ransom demanded or paid



VS.



\$116,324

\$224,871



THE REGULATORY ENVIRONMENT

State Data Breach Laws

Children's Online Privacy Protection Act (**COPPA**)

Health Insurance Portability & Accountability Act (**HIPAA**)

Federal Information Security Management Act (**FISMA**)

GDPR (General Data Protection Regulation)

Gramm-Leach-Bliley

Health Information Technology for Economic & Clinical Health Act (**HITECH Act**)

Securities and Exchange Commission (**SEC**)

FTC

FDIC and **FFIEC**

Sarbanes-Oxley

California Consumer Protection Act

Payment Card Industry Data Security Standard (**PCI-DSS**)

Marriott, British Airways handed record fines under GDPR

Marriott: \$123 million

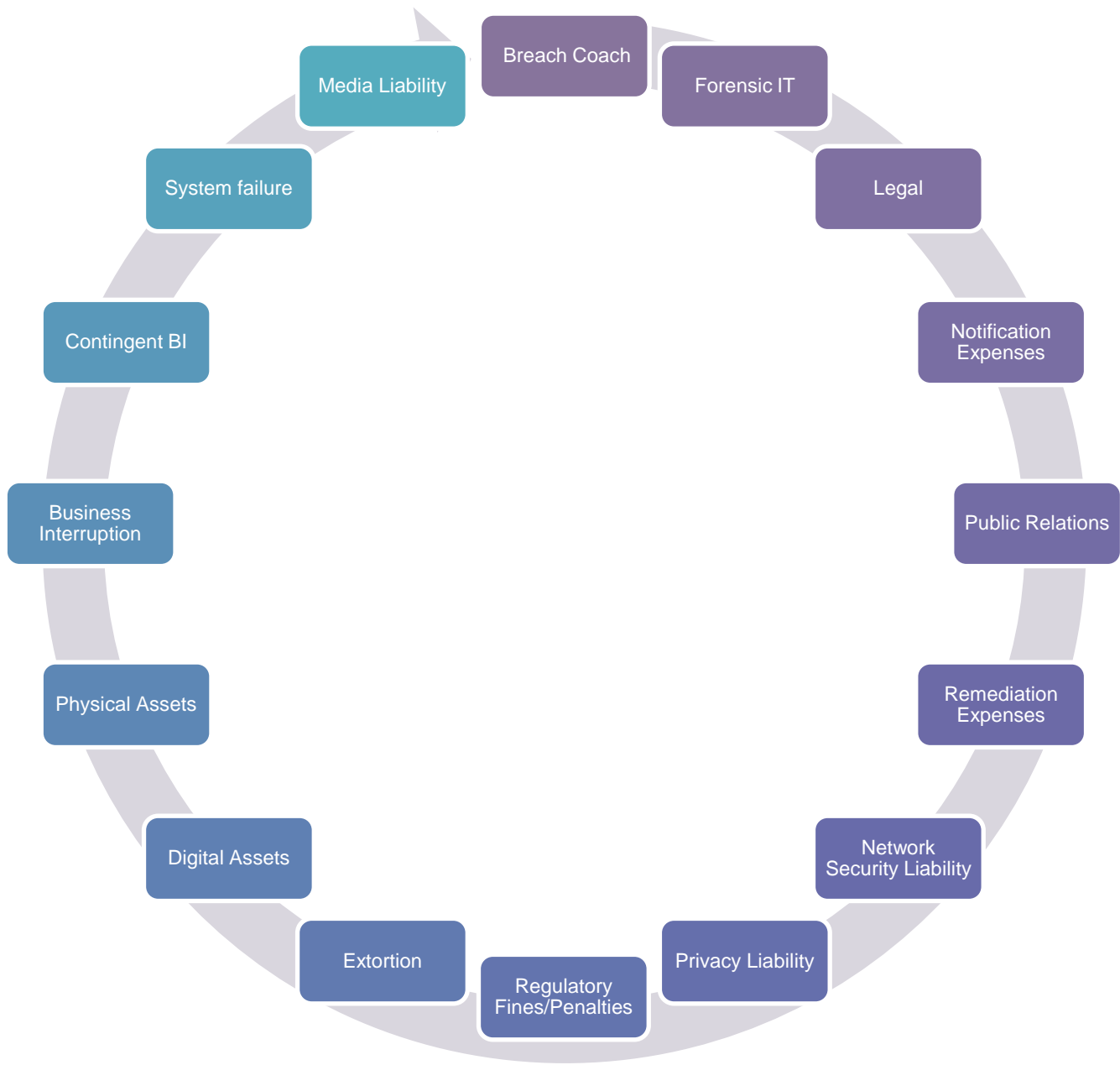
British Airways: \$230 million



CYBER WAR

A conflict without foot soldiers, guns, or missiles





CYBER CRIME

- Computer Fraud
- Funds Transfer Fraud
- Social Engineering Fraud
- Invoice Manipulation Fraud
- Telecommunications Fraud



CYBER INSURANCE RESOURCES

- Post-Breach

- Response team
- Negotiated vendor relationships
- Privacy attorneys/forensics/PR



- Pre-Breach

- Employee training modules
- Cyber risk assessments
- Cybersecurity consultation
- Hardware/software offerings
- Discounted services (pen tests, scans, etc.)



HOW TO ASSESS CYBER RISKS?

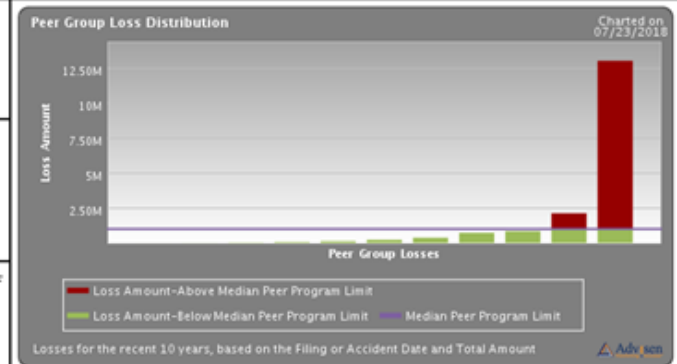
- Understand critical assets
- Determine risk strategy
- Risk assessment
- Modeling/analytics
- Have a plan!

Limit Adequacy

Median Peer Program Limit
\$ 1,000,000

% of Settlements above
Median Peer Program Limit
18.2%

Average Amount in Excess of
Median Peer Program Limit
\$ 6,570,250



RISK EXPOSURE

Where do you measure in Risk Exposure?

68

Warning! Your risk is high!

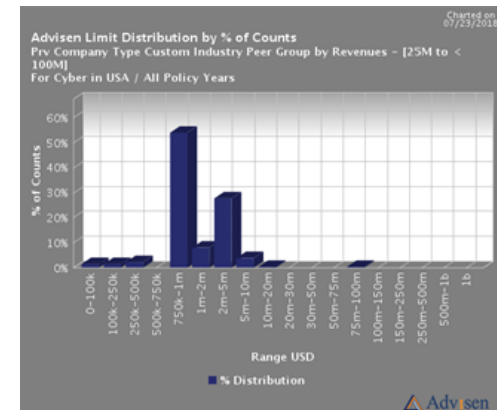
You need to take immediate action that will improve your situation. ABRC can guide you out of risky situations and get you back on the right track. Call ABRC today to begin.

Here are some things to consider about your results

1 Do you have effective data backup procedures in place?

■ Yes

Good job you answered yes. You are protecting yourself from these risks. Data loss is a major threat to any business, and there are many ways to lose it: viruses, malware and ransomware, accidental deletion, hard drive failure, employee misconduct, theft, physical damage or natural disasters. Having an effective data backup plan is crucial to recover data and keep your business running after a loss occurs. Back up your data at least once daily to allow minimal data loss, and make certain to encrypt your backup data in the event of theft. Regularly store your backup data offline to protect your business in the event of physical damage or natural disaster.



CONTACT: CARLA BORDA

CARLA.BORDA@ASSOCIATEDBRC.COM

262-439-4726

TAKE OUR CYBER RISK SURVEY

[**HTTPS://WWW.ASSOCIATEDBRC.COM/EXPERTISE/SPECIALTY-COVERAGES/CYBER-LIABILITY**](https://www.associatedbrc.com/expertise/specialty-coverages/cyber-liability)



Benefits and Risk Consulting