

Process Safety Management Compliance Issues

A Photographic Tour of Worst Chemical Manufacturing Nowhere, USA

Gayle Nicoll, PhD, REP, ASP, CSP
Senior Scientist
AECOM Technical Solutions
1555 North RiverCenter Dr., Suite 214
Milwaukee, WI 53212
414-944-6080 (office)
608-359-5923 (cell)
Gayle.Nicoll@aecom.com



Site Visit

Hypothetical Site

No real location, no real identity

Anonymous Photo

ID What's Wrong

Discuss How To Correct



Building Exterior



Chemical Unloading Area

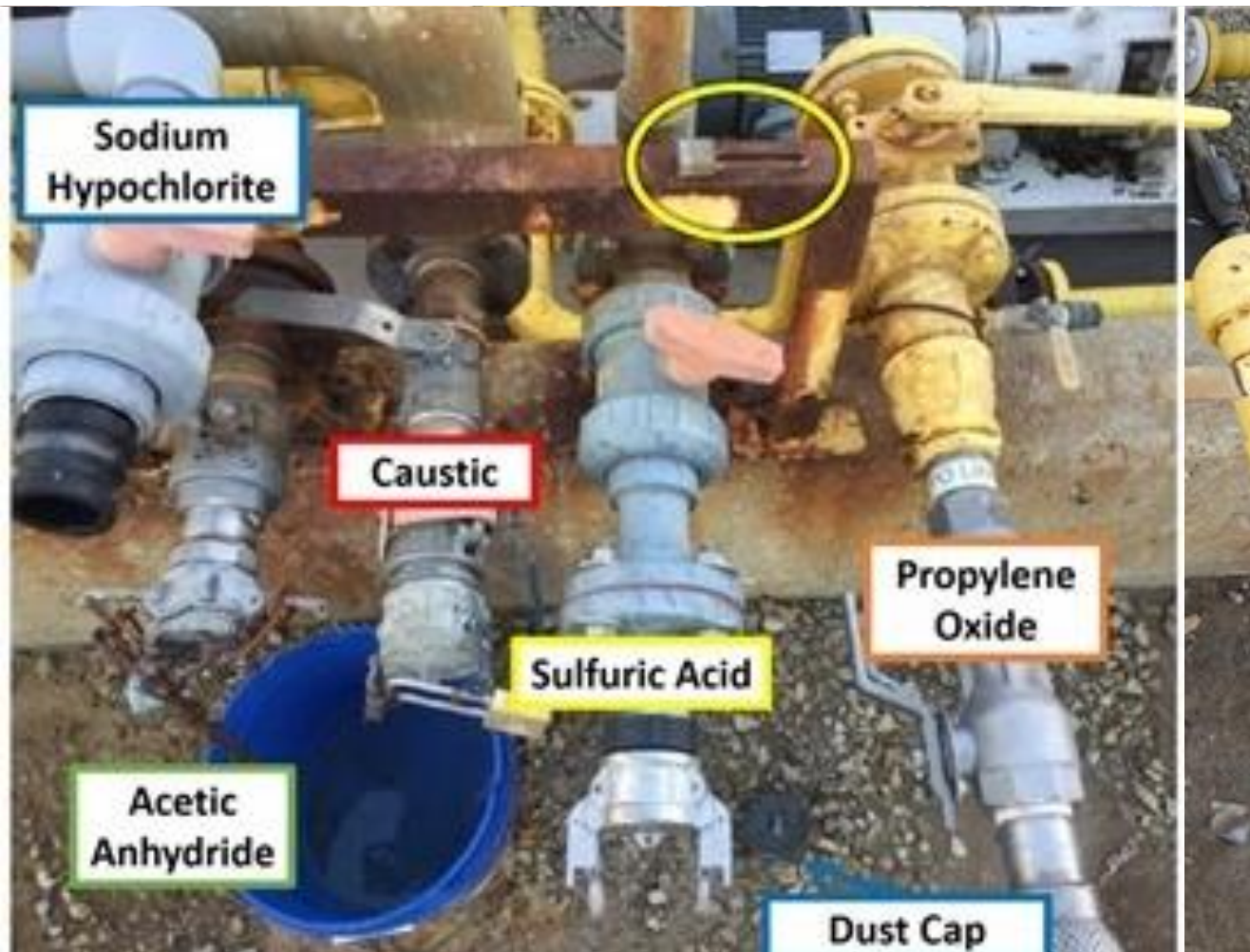


Photo Credit: CSB, Media Room, Photo Gallery, MGPI Investigation, <https://www.csb.gov/photos/>

Site Access



Flammable/Combustible Containment



Hot Work



Photo Credit: CSB, Media Room, Photo Gallery, Partridge-Raleigh Investigation,
<https://www.csb.gov/photos/>

Flammable Liquid Storage



Tank Exterior



Flammable/Combustible Tank



Emergency Lighting



Tank Venting



Building Interior



Braided Hose



Photo Credit: CSB, Media Room, Photo Gallery, DuPont, Belle, WV Investigation,
<https://www.csb.gov/photos/>

Pumping Flammable Material



Discharge to Sewer



Blowout Wall



Combustible Dust



Flammable/Combustible Interior



Look Up



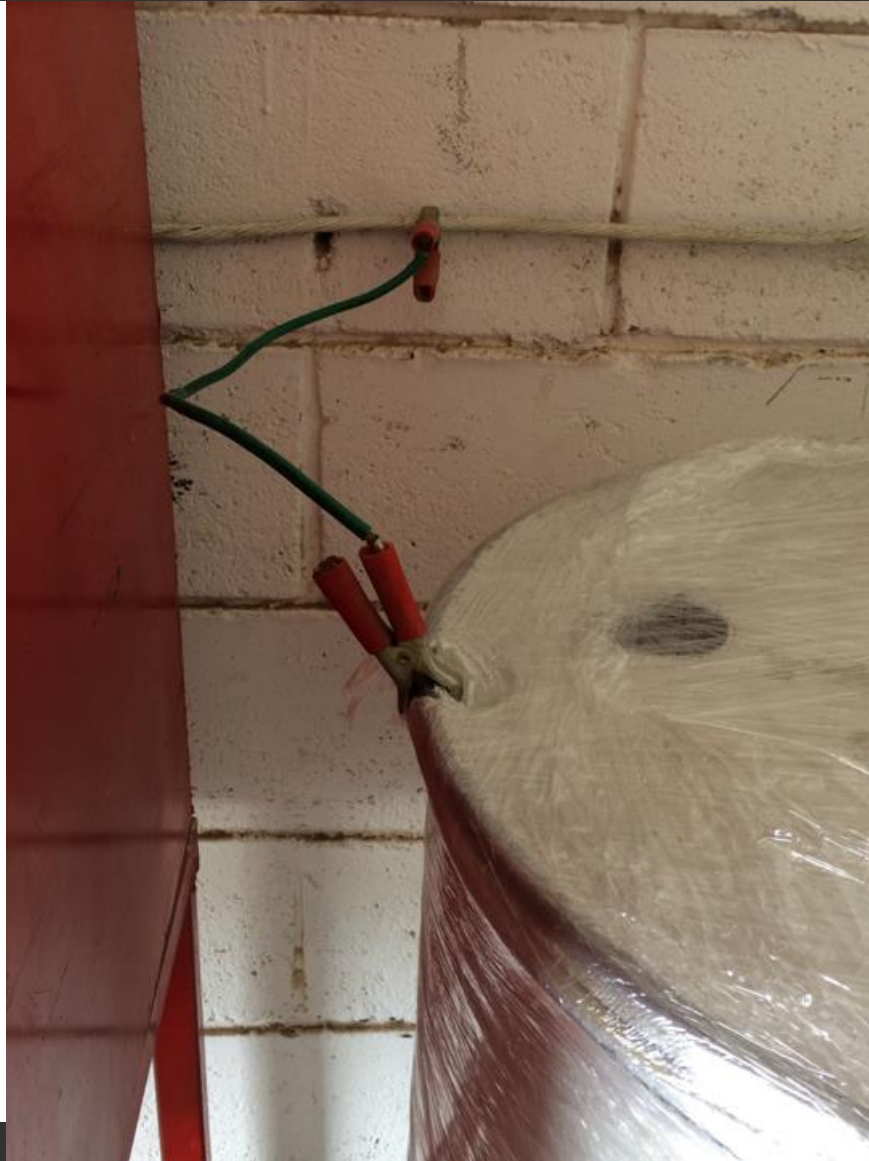
Identity Crisis



Water Bath



Flammable/Combustible



Smoke Hatch



LOTO



The Worst PSM
Program

Anywhere, USA

**LOTO Program
Manual**

Combustible Liquid Storage



Hazardous Chemical Storage



Tank Venting



Out of Service Slings



Compressed Air Line



Sewer



Flammable/Combustible Area



VFD Wiring Issue



Electrical



Live Busbar

A green, rectangular sign with rounded corners and a white border, tilted upwards. The word "Challenge" is written in large, white, sans-serif capital letters. The sign is supported by two metal poles. The background is a bright blue sky with scattered white clouds.

Challenge

Do You See It?



Do You See It?



Hazardous (Classified) Location



Hazardous (Classified) Location



Do You See It?



Flammable/Combustible



Inside Tank



What do you see?

Conclusion

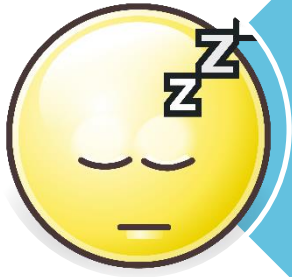


Look around your facility with a fresh set of eyes.



Focus on:

- Electrical
- PM Completion



Don't get complacent

An Ounce of Prevention...



Photo Credit: CSB, Media Room, Photo Gallery, Husky Energy, Superior, WI, 2018,
<https://www.csb.gov/photos/>