

# TURNING ORGANICS INTO ENERGY

## GENERATION

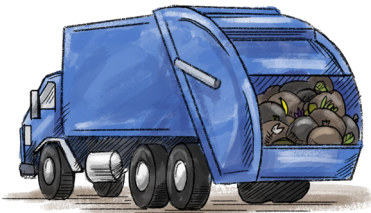
Any entity producing organic, biodegradable waste can divert material to anaerobic digestion.

Good candidates for the program include: hotels, grocery stores, food and beverage manufacturers, cafeterias, restaurants, etc.

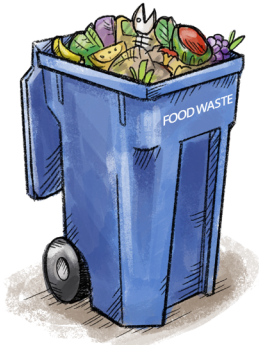
Your business can divert packaged and unpackaged food waste, including prepared food, fruit, vegetables, meat, dairy, and fats, oils, and grease (F.O.G.).

## COLLECTION

You can coordinate with your existing waste hauler to transport material in totes, self-contained compactors, or small dumpsters.



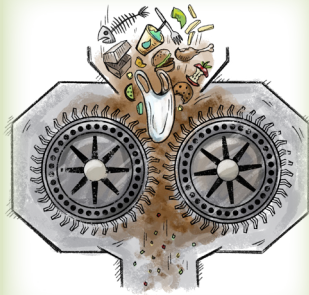
To prevent pest and odor problems, organic waste can be collected in plastic bags.



## PRE-PROCESSING

Wasatch Resource Recovery will receive and process the food waste.

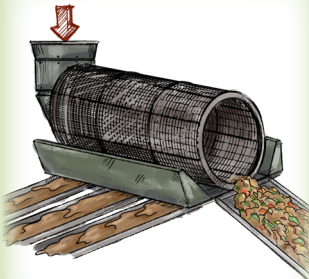
Special equipment is used to remove contaminants and then grind and liquefy the material to create a slurry suitable for the digester.



**SHRED**  
*WASTE SHREDDER*



**LIQUEFY**  
*TURBO DISSOLVER*



**SCREEN**  
*ROTARY DRUM SCREEN*

## DIGESTION

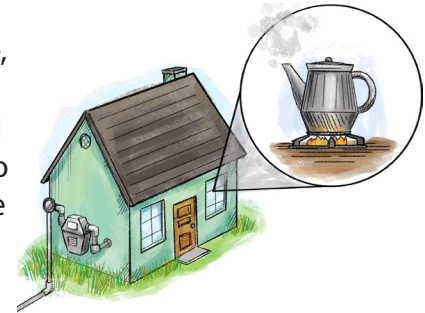
Wasatch Resource Recovery utilizes anaerobic digestion to break down the organic waste.

This is a proven process that aids microorganisms as they turn organic waste into methane and a biobased fertilizer.



## END PRODUCTS

A renewable energy source, methane, is produced and converted into pipeline grade natural gas.



Enough natural gas will be created from previously landfilled materials to supply a community the size of Bountiful, Utah (40,000 people).

The solids from the digestion produce a biobased, nutrient-rich fertilizer which can be marketed to the agriculture industry.



[www.wasatchresourcerecovery.com](http://www.wasatchresourcerecovery.com)