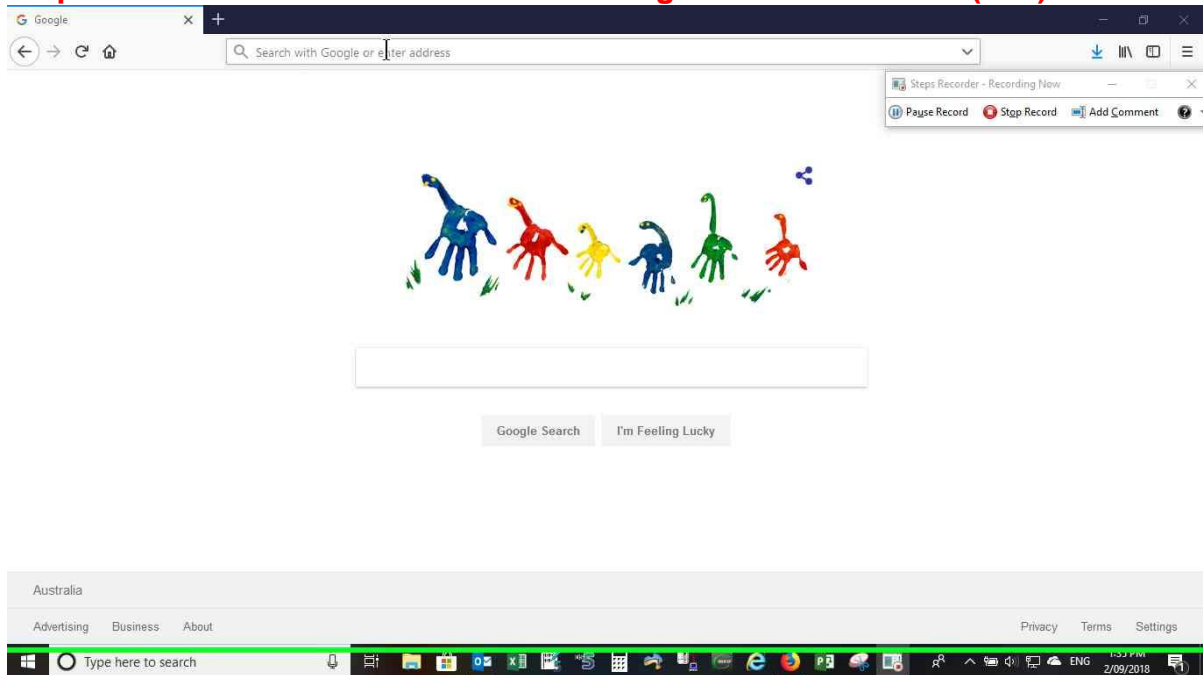


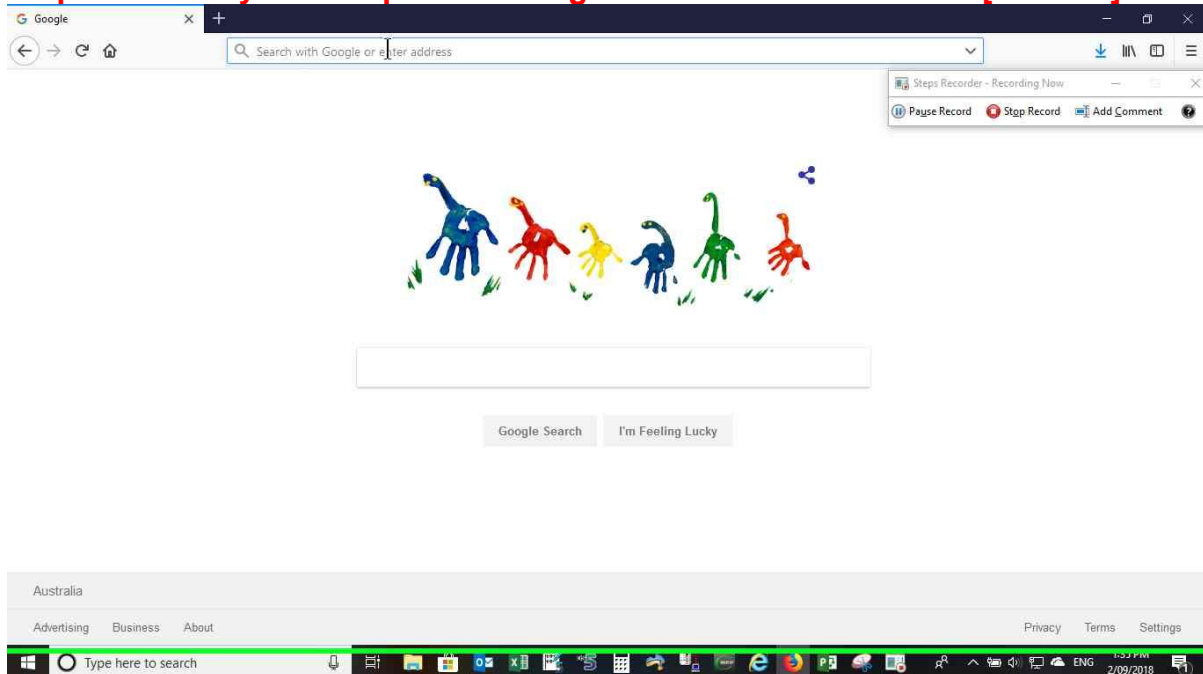
Steps to configure Cybertec DMM250 Router with IOT2IOTHUB configuration file.

Step 1: User left click on "Search with Google or enter address (edit)"



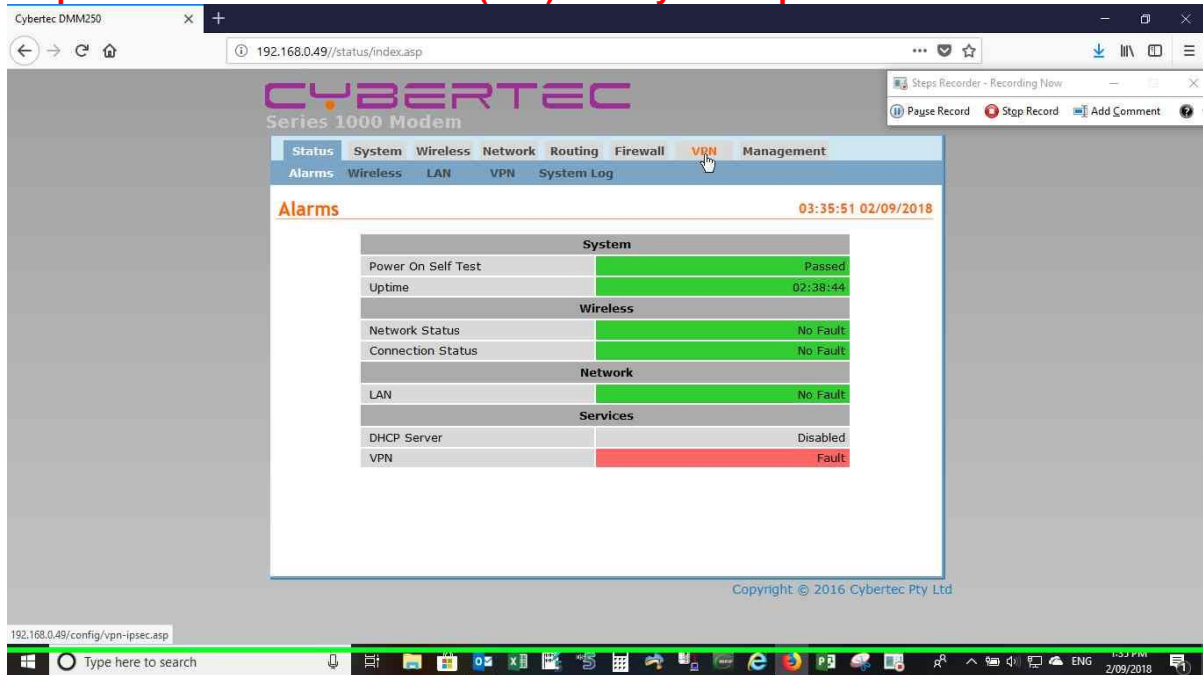
Step 1 screenshot.

Step 2: User keyboard input on "Google – IP Address of router" [... Enter]



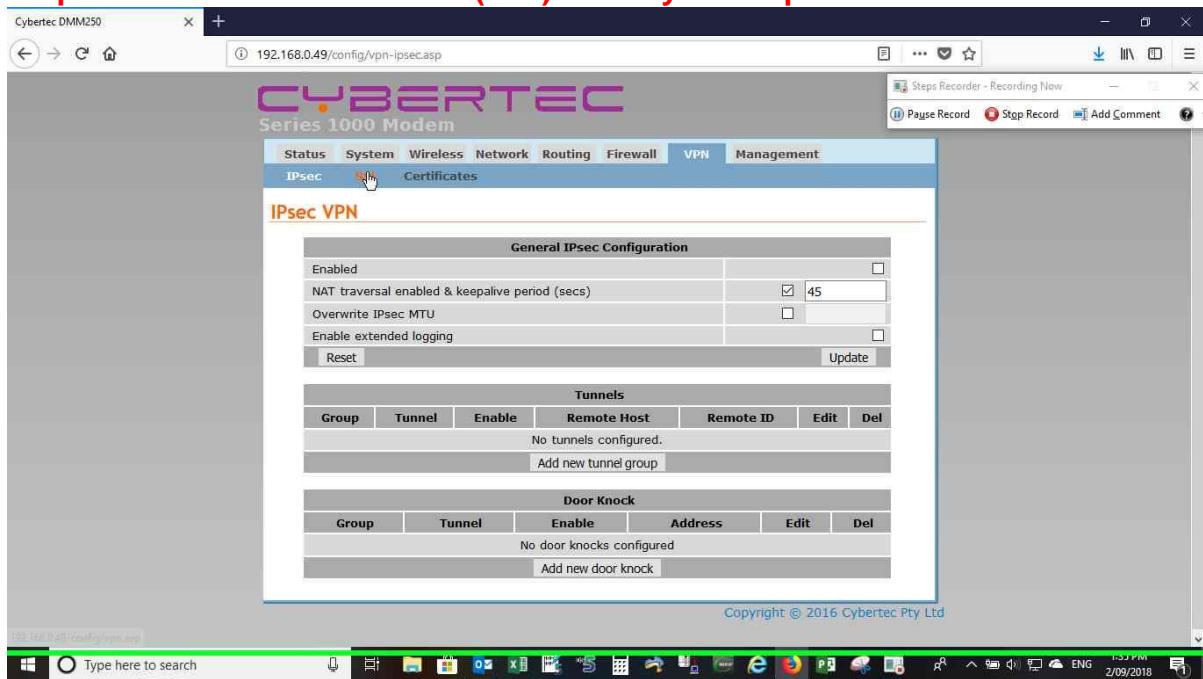
Step 2 screenshot.

Step 3: User left click on "VPN (edit)" in "Cybertec portal"



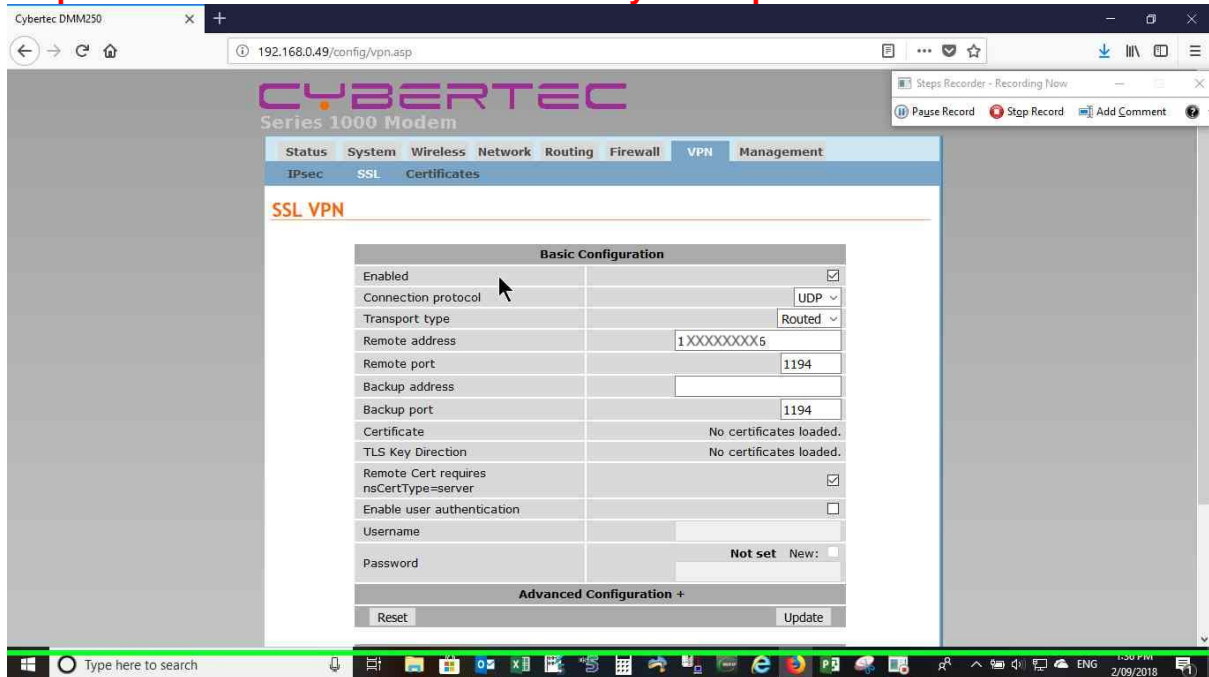
Step 3 screenshot.

Step 4: User left click on "SSL (edit)" in "Cybertec portal"



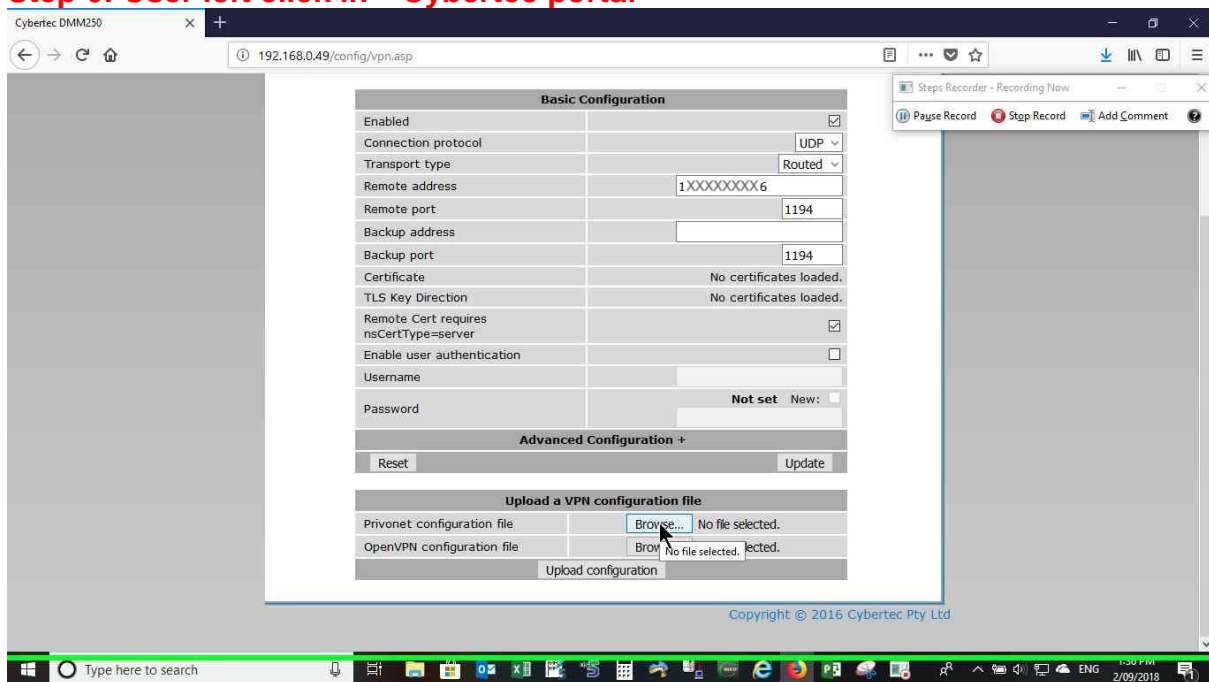
Step 4 screenshot.

Step 5: User mouse wheel down on in "Cybertec portal "



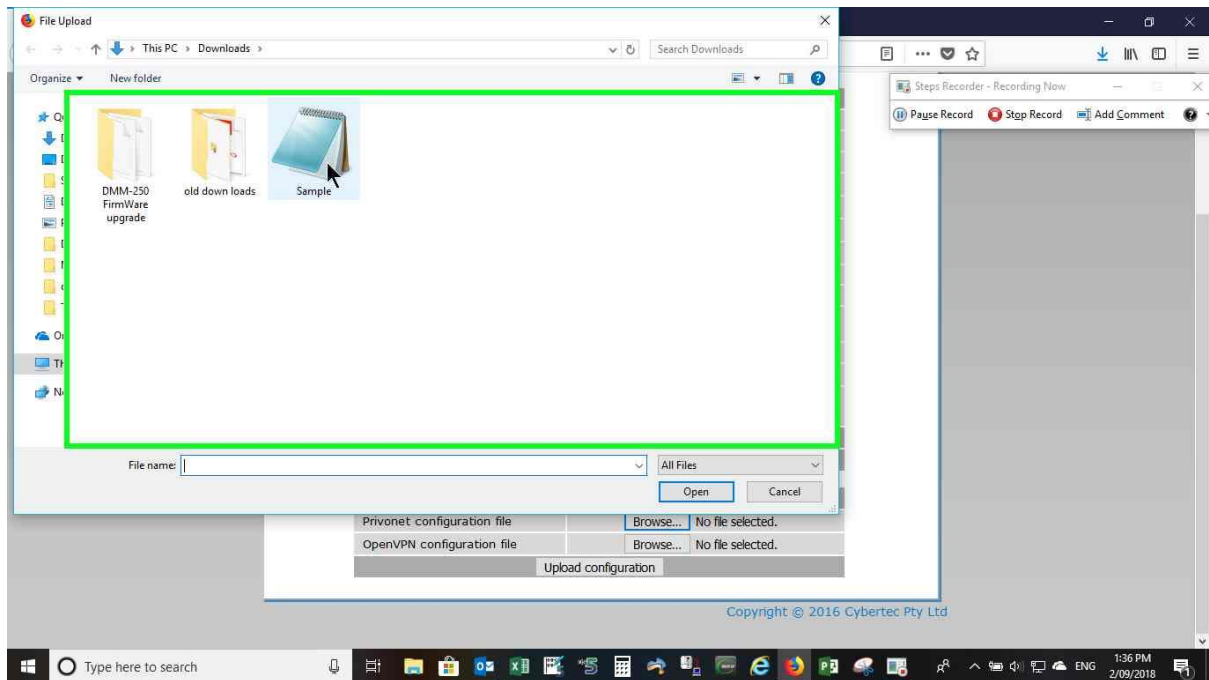
Step 5 screenshot.

Step 6: User left click in " Cybertec portal "



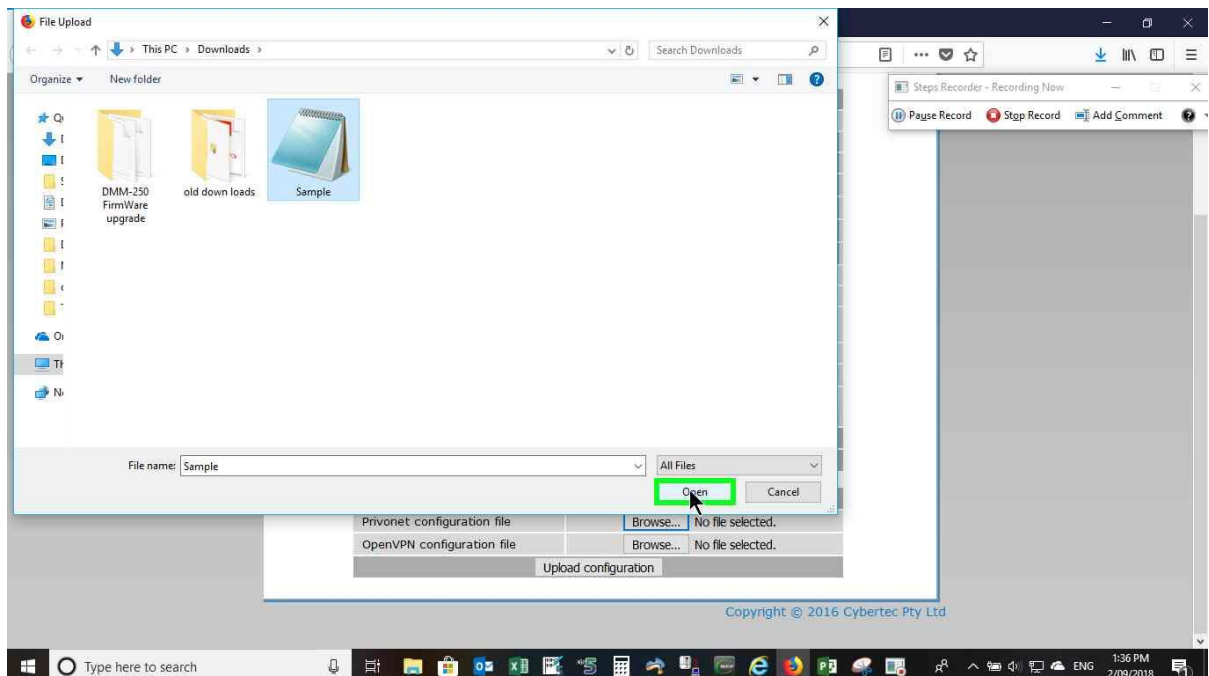
Step 6 screenshot.

Step 7: User left click on "Sample (list item)" in "File"
(this is the .cfg file download from IOT2IOTHUB Portal)



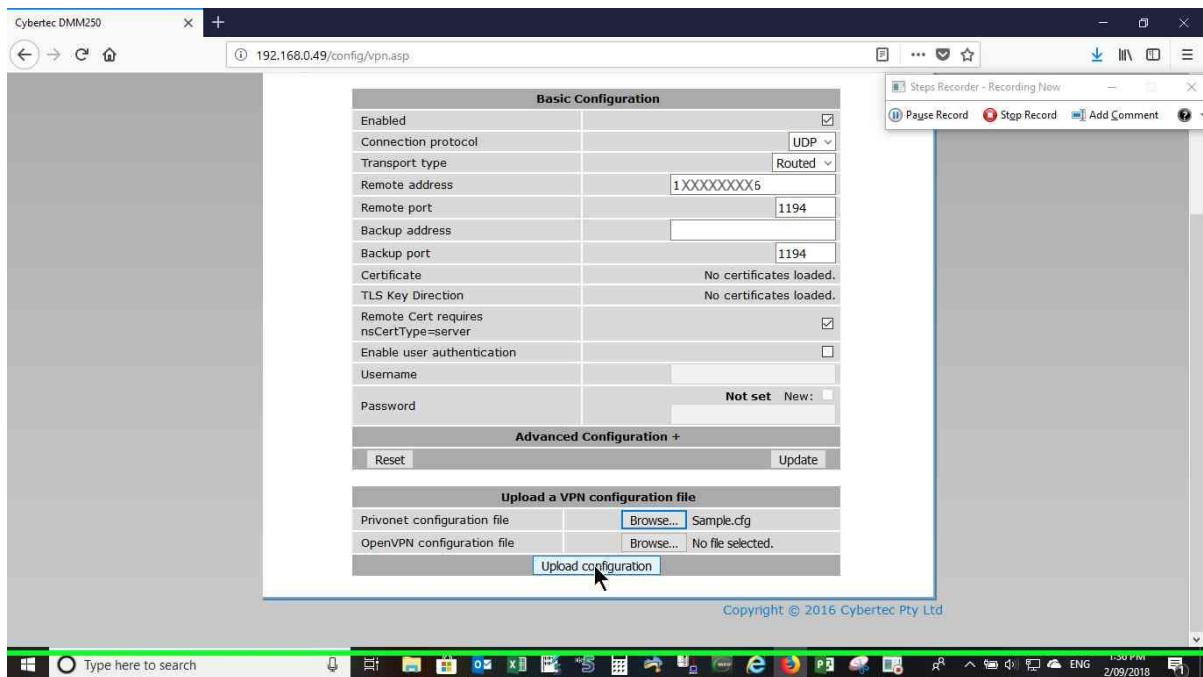
Step 7 screenshot.

Step 8: User left click on "Open (button)" in "File"



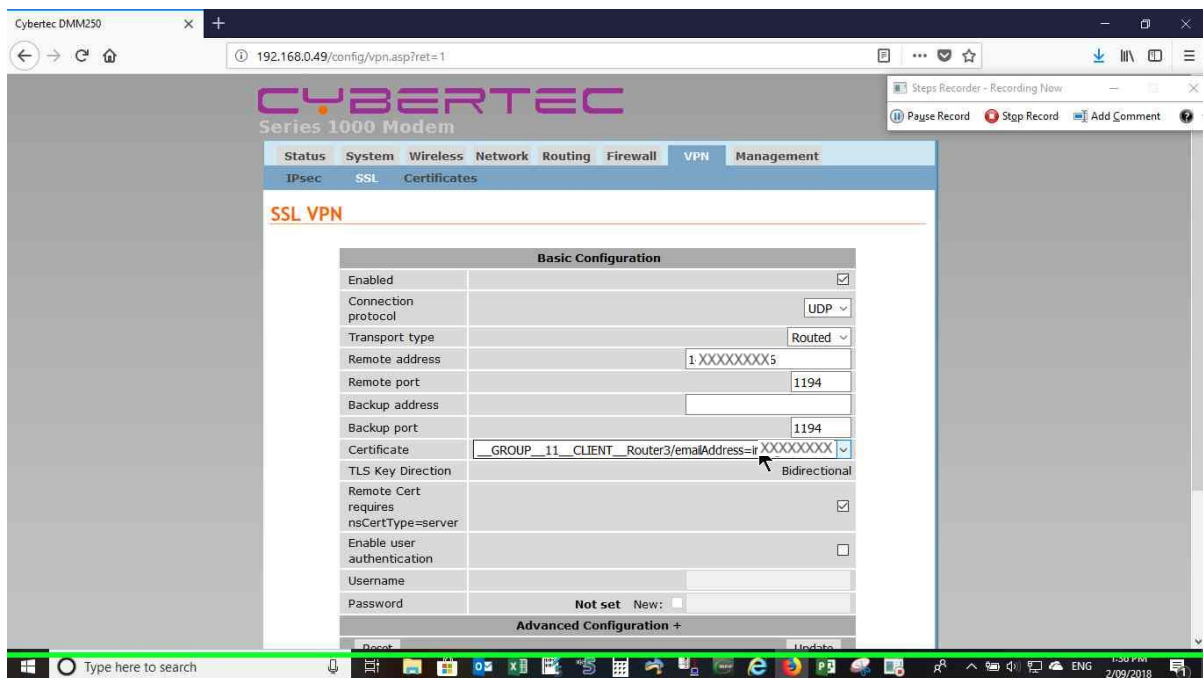
Step 8 screenshot.

Step 9: User left click on "Upload configuration (button)" in " Cybertec portal "



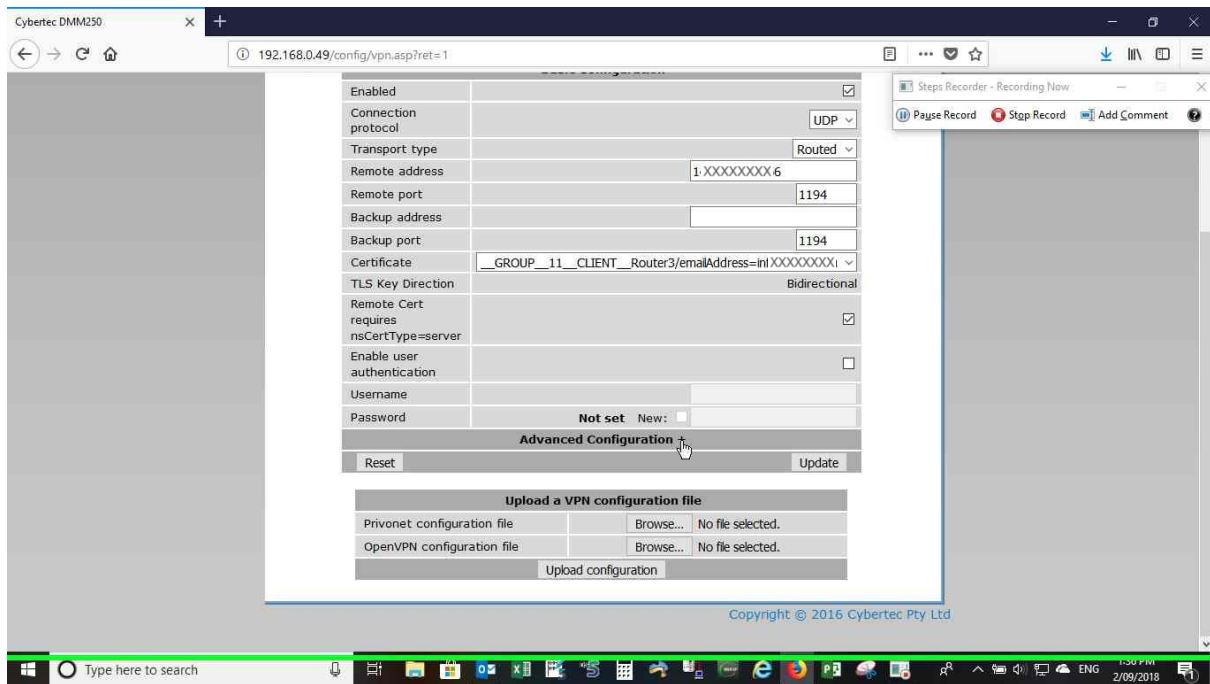
Step 9 screenshot.

Step 10: User mouse wheel down in " Cybertec portal "



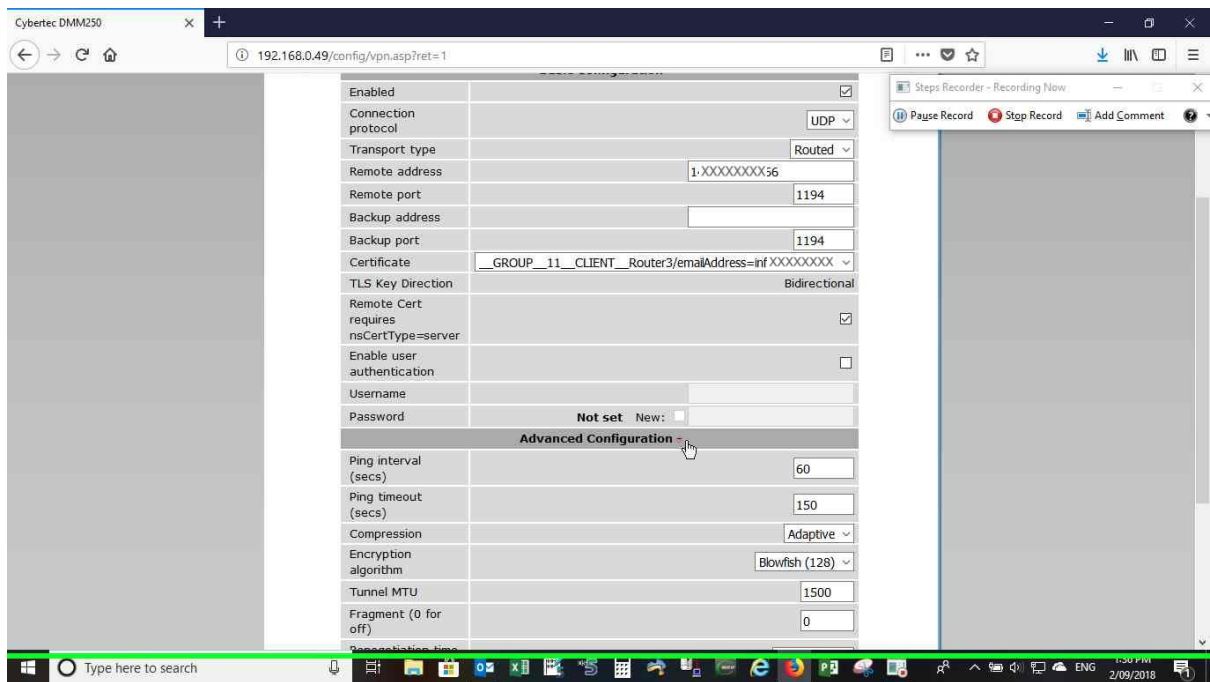
Step 10 screenshot.

Step 11: User left click in "Cybertec portal"



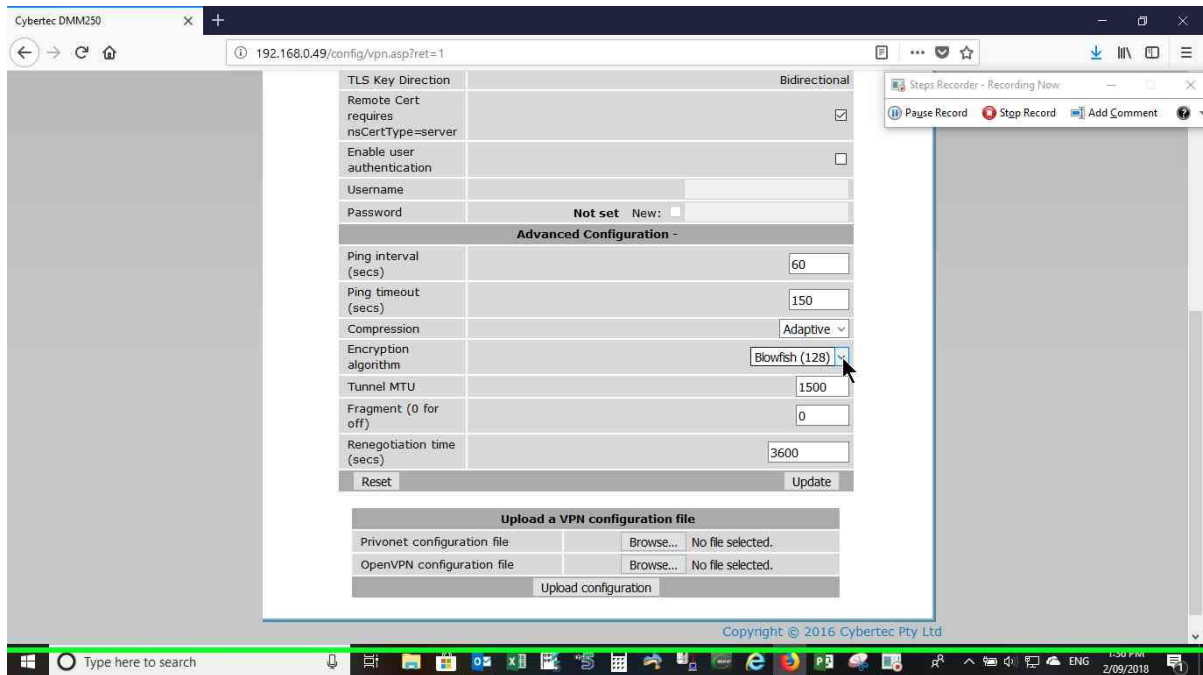
Step 11 screenshot.

Step 12: User mouse wheel down on "Advanced Configuration - (header)" in "Cybertec portal"



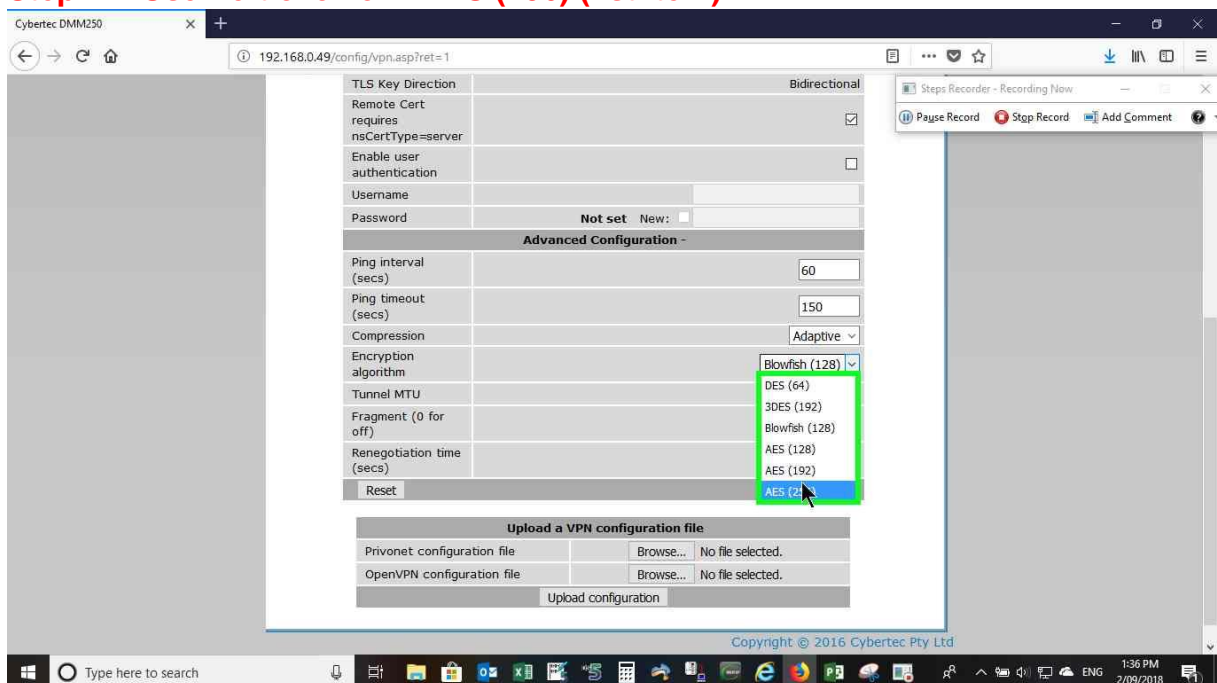
Step 12 screenshot.

Step 13: User left click on "Encryption algorithm Blowfish (128) ()" in "Cybertec portal"



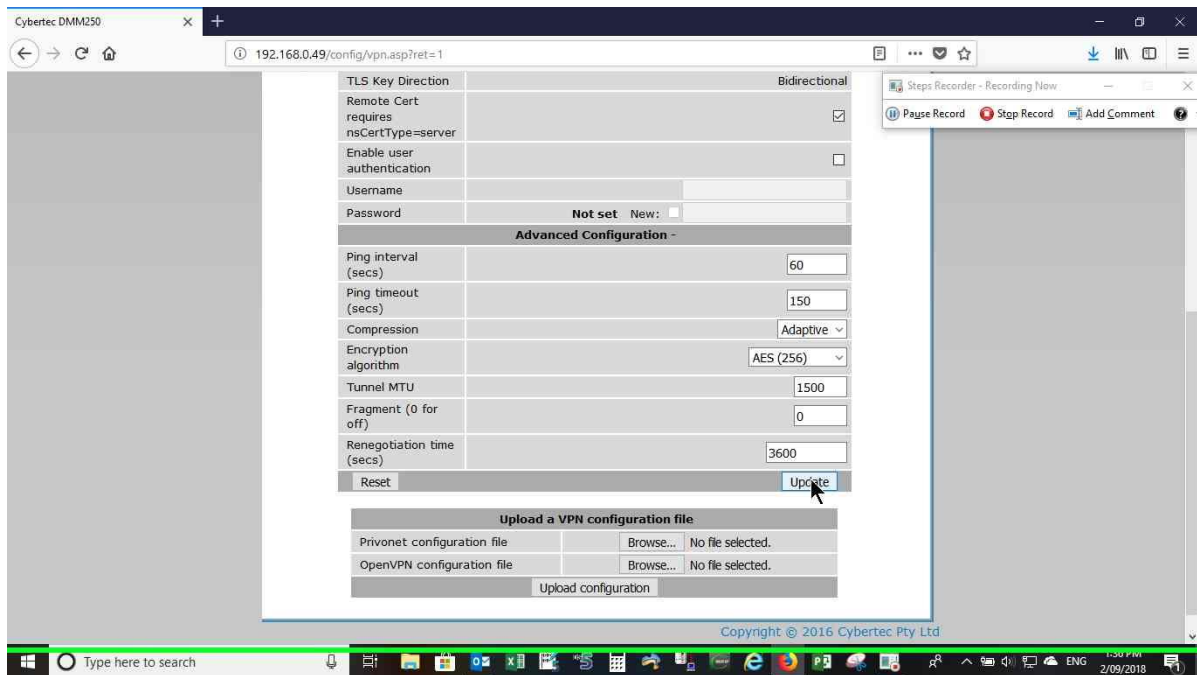
Step 13 screenshot.

Step 14: User left click on "AES (256) (list item)"



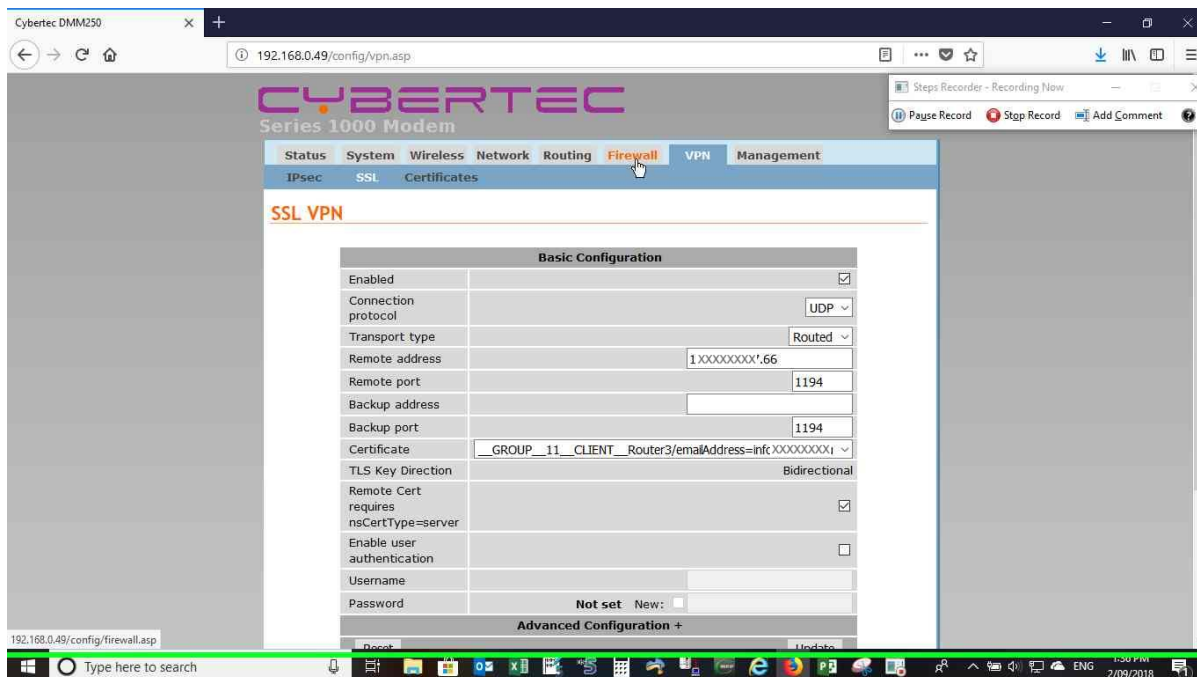
Step 14 screenshot.

Step 15: User left click in " Cybertec portal " Update



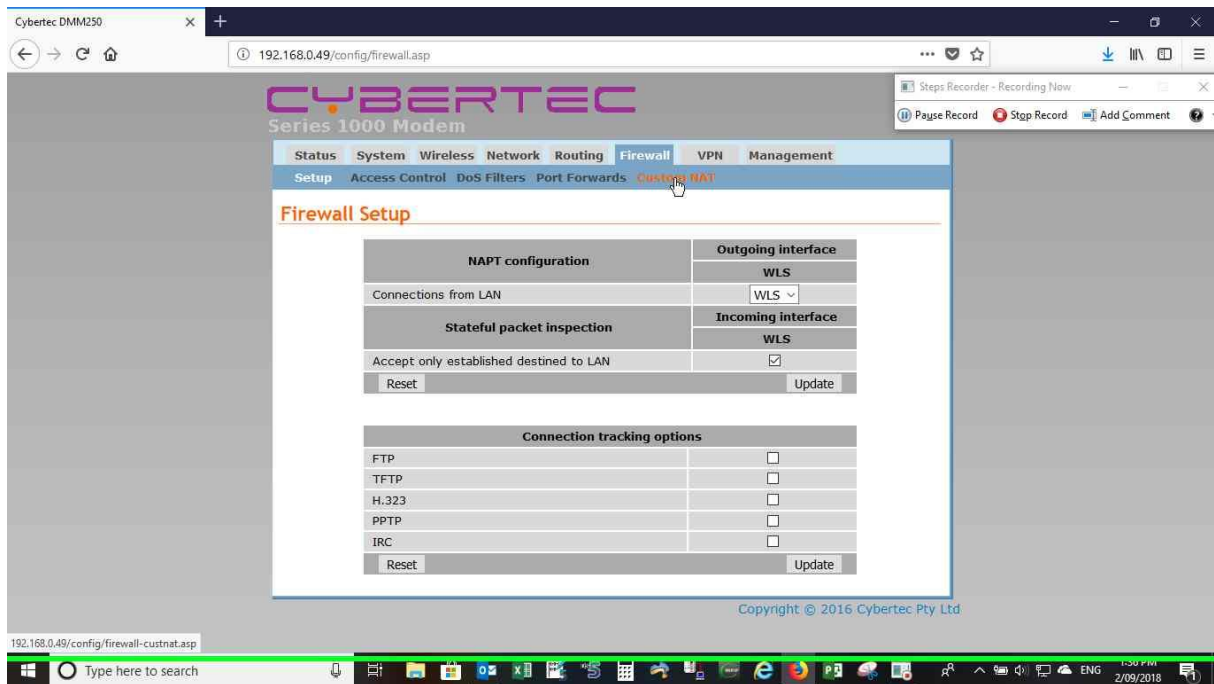
Step 15 screenshot.

Step 16: User left click on "Firewall (edit)" in " Cybertec portal "



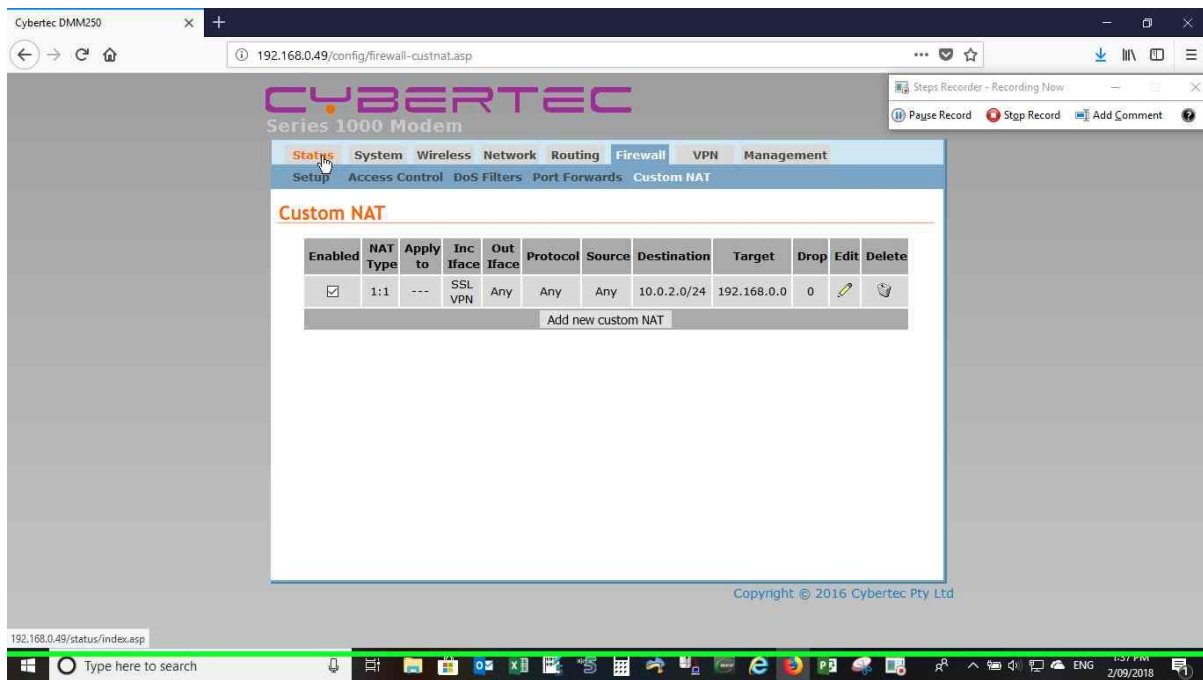
Step 16 screenshot.

Step 17: User left click on "Custom NAT (edit)" in "Cybertec portal "



Step 17 screenshot.

Step 18: Check to see if custom NAT loaded then left click on "Status (edit)" in "Cybertec portal "



Step 18 screenshot.

Step 19: Check to see if VPN is Green on "Status (edit)" in "Cybertec portal"

The screenshot displays the Cybertec Series 1000 Modem web interface. The top navigation bar includes tabs for Status, System, Wireless, Network, Routing, Firewall, VPN, and Management. Below this, a secondary bar shows Alarms, Wireless, LAN, VPN, and System Log. The main content area is titled "Alarms" and shows a timestamp of 06:16:09 02/09/2018. A table lists the status of various components:

System		
Power On Self Test		Passed
Uptime		05:13:57
Wireless		
Network Status		No Fault
Connection Status		No Fault
Network		
LAN		No Fault
Services		
DHCP Server		Disabled
VPN		No Fault

Copyright © 2017 Cybertec Pty Ltd

Step 19 screenshot.