

Installing OpenVPN – Windows PC and Adding IOT2IOTHUB .ovpn file

The installation of the OpenVPN client requires administrator rights. Start the installation of the file `openvpnngui.exe`. A setup wizard will guide you through the installation process.

Notes

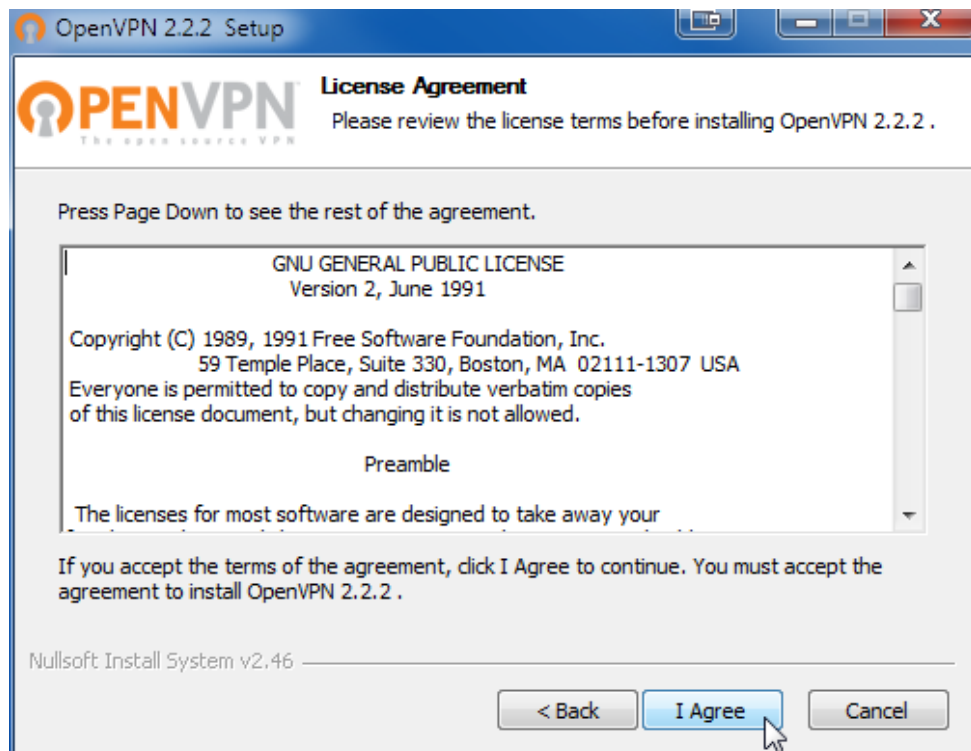
1. Remove previously installed versions of the OpenVPN client, because installing the new version over an existing one may cause unforeseen difficulties in setting up the VPN tunnel.
2. The installation of the OpenVPN client under Windows 7 requires administrator rights. Open the context menu of `openvpnngui.exe` by clicking the right mouse button. Choose the Execute as Administrator menu item.
3. Accept all defaults during the installation.
4. After the installation of the clients copy the OpenVPN configuration file `.ovpn` into the config subdirectory in the directory you installed the OpenVPN client to.

Installing the OpenVPN client on a Windows PC

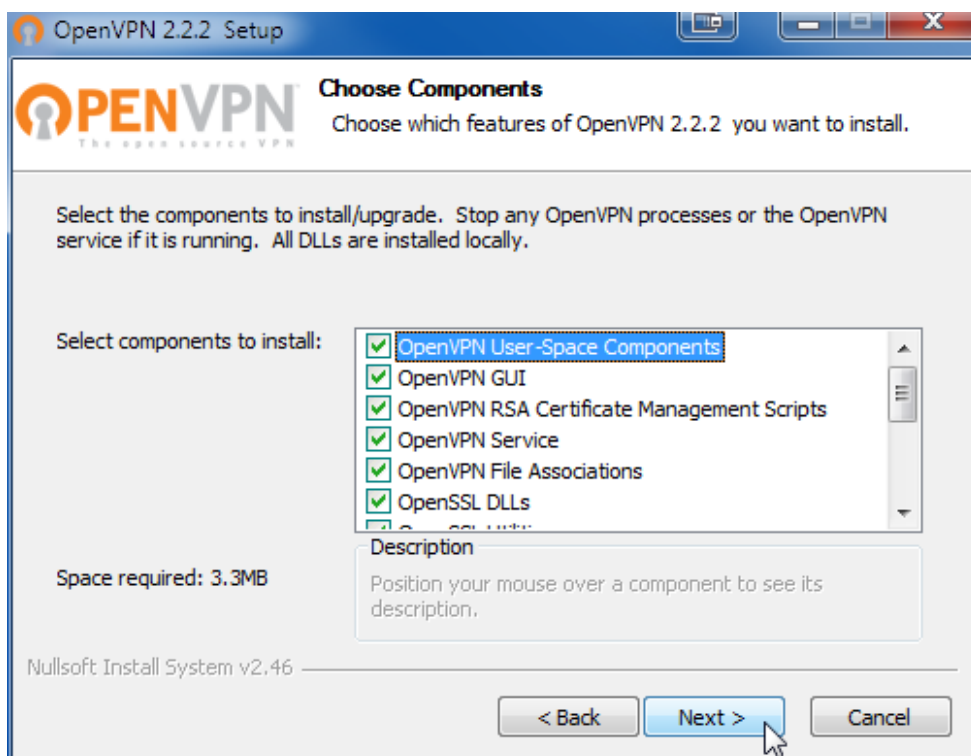
Open the folder where you stored the file `openvpnngui.exe` and start the OpenVPN Setup Wizard which will guide you through the installation process.



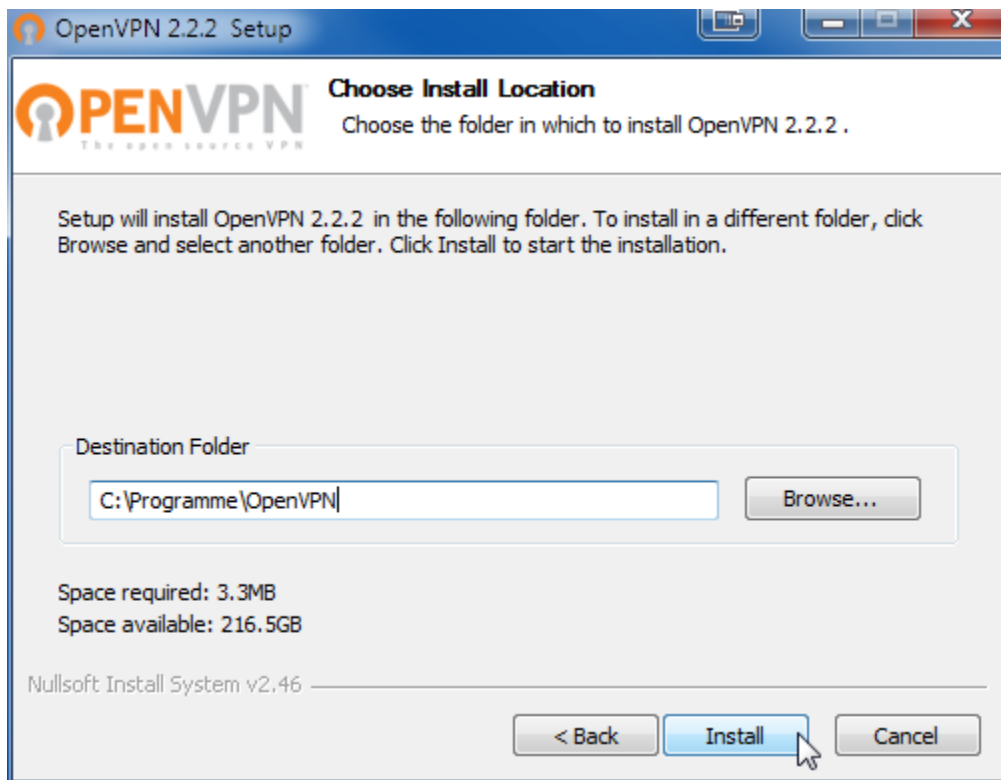
OpenVPN Setup – Step 1 Click on the Next button.



OpenVPN Setup – Step 2
Accept the license agreement by clicking
on the I Agree button.



OpenVPN Setup – Step 3
Choose the components to install.
It is best to take accept the suggested components.
Click on the Next button.



OpenVPN Setup – Step 4

Accept the suggested target directory or enter a new directory by clicking on the Browse button.

Click on the Install button to start the installation.

After the installation of the client copy the IOT2IOTHUB OpenVPN configuration file .ovpn into the config subdirectory in the directory you installed the OpenVPN client to.

This PC > Windows (C:) > Program Files (x86) > OpenVPN > config				
Name		Date modified	Type	Size
is	README	16/01/2018 11:10	Text Document	1 KB
	SAMPLE	1/09/2018 2:15 PM	OVPN File	6 KB

OpenVPN – Save configuration file .ovpn

This completes installation and configuration of OpenVPN on a Windows computer