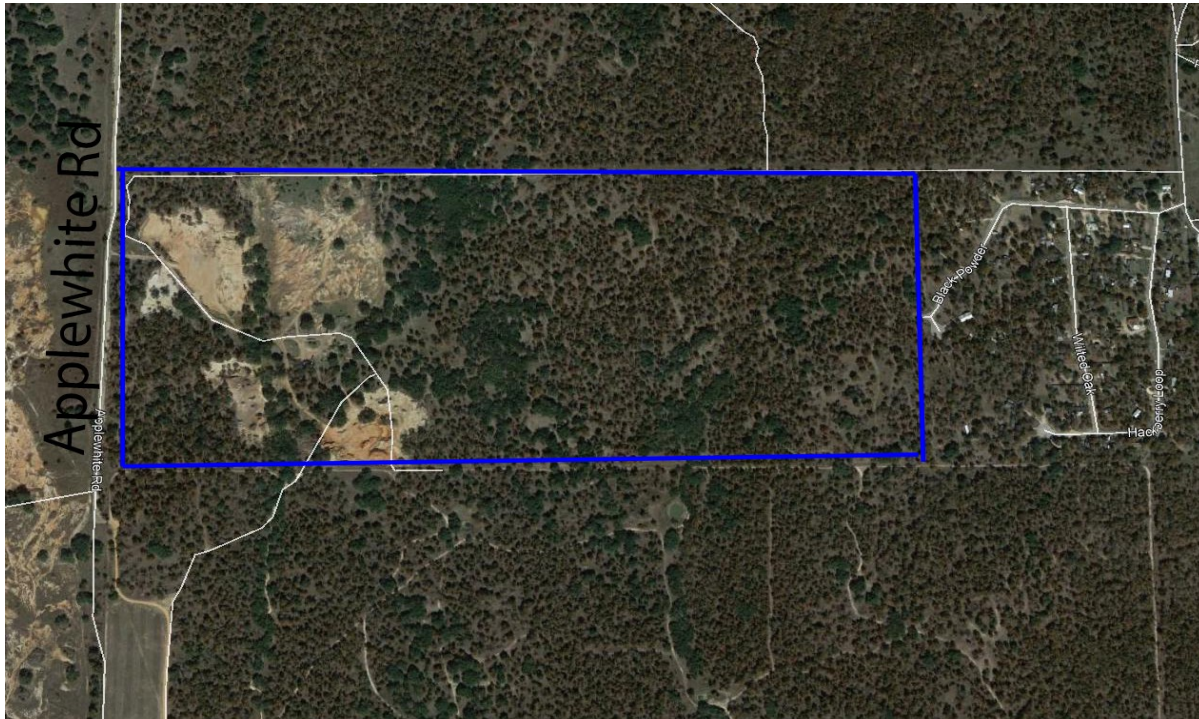


+/- 226 Acres

Applewhite Rd, Bexar County



Location: Past paved portion of Applewhite Rd.

Zoning: outside city limits

Land Size: +/- 226 Acres

Frontage: +/- 2,000' Applewhite Rd.

Comments: Located on the southern portion of Bexar County.

Area is known for its sand aggregate and material reserves.

+/- 32 acres have been partially excavated. Located by Bexar County line. Small portion in the 100 yr. flood plain. On Eastside of property, Black Powder Rd stubs out onto property line. 12" SAWS water line stubbed out on Black Powder entryway.

In Opportunity Zone. Call for info and link. Tax incentives.

Residential, industrial, recreational, commercial & ag use.

Price: \$1,938,000

Chuck Christian, Broker

210-316-0588

chuck@buyselltx.net

Ben Foster, agent

210-872-2868

benfoster@buyselltx.net

Office

900 NE Loop 410 #D302

San Antonio, TX 78209

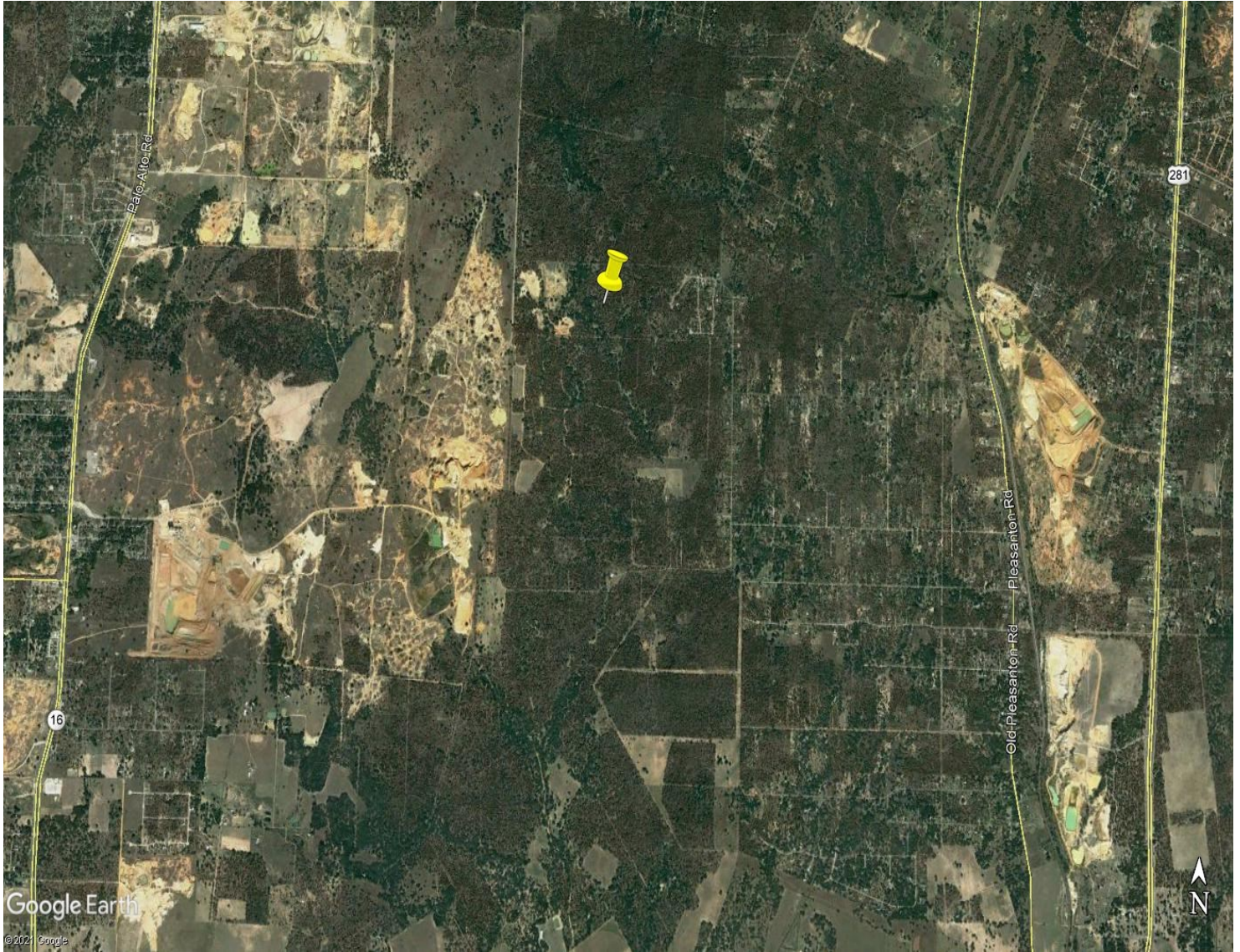
210-348-9900

WWW.BUYSELLTX.COM



*The above information was received from sources deemed to be reliable; however, no warranty can be implied by New Market Real Estate, LLC. as to the accuracy or correctness thereof. This offering is subject to verification, changes in price or terms, and withdrawal from the market.

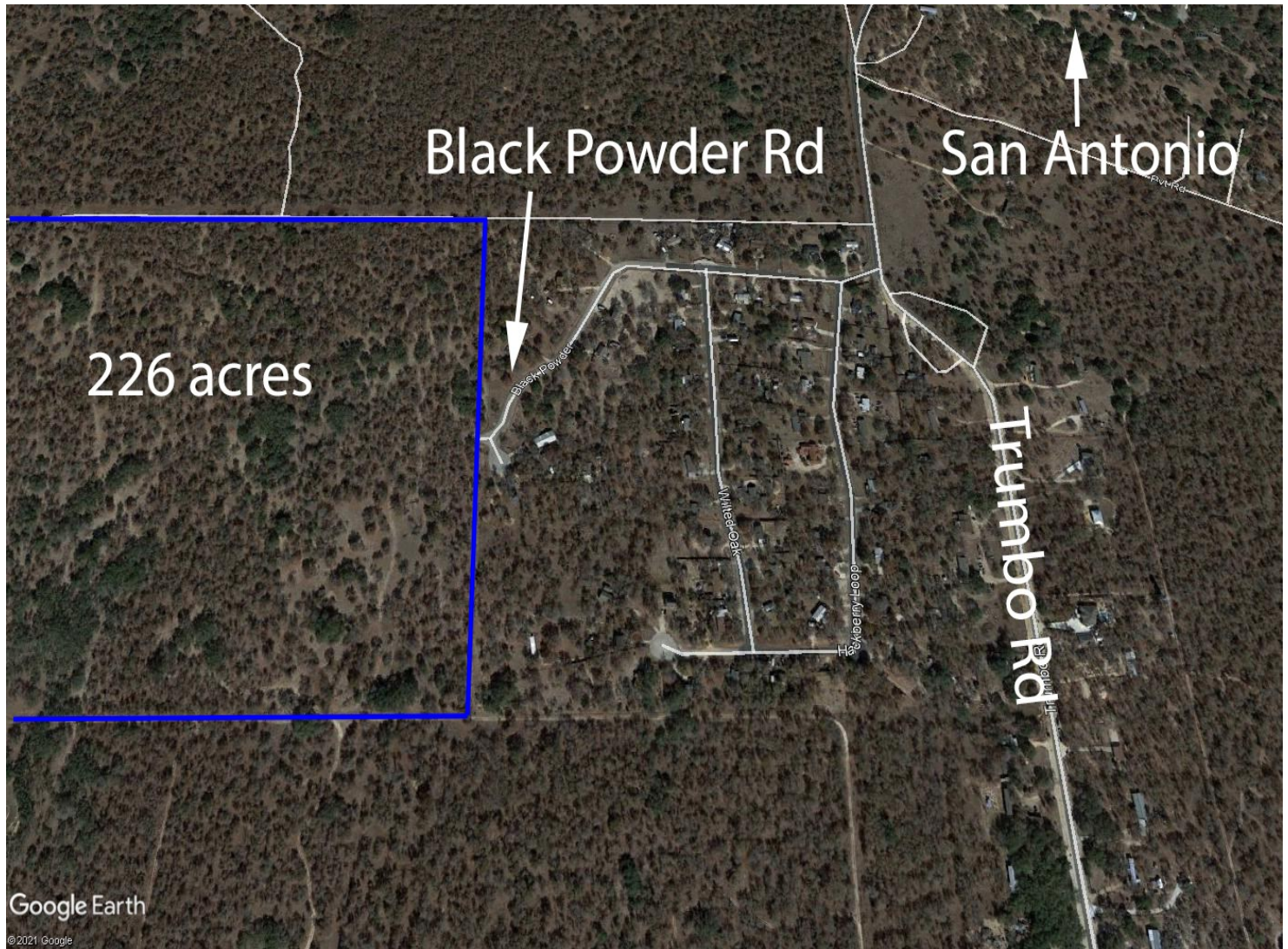
+/- 226 Acres Applewhite Rd, Bexar County



*The above information was received from sources deemed to be reliable; however, no warranty can be implied by New Market Real Estate, LLC. as to the accuracy or correctness thereof. This offering is subject to verification, changes in price or terms, and withdrawal from the market.

+/- 226 Acres

Applewhite Rd, Bexar County



*The above information was received from sources deemed to be reliable; however, no warranty can be implied by New Market Real Estate, LLC. as to the accuracy or correctness thereof. This offering is subject to verification, changes in price or terms, and withdrawal from the market.

+/- 226 Acres Applewhite Rd, Bexar County



*The above information was received from sources deemed to be reliable; however, no warranty can be implied by New Market Real Estate, LLC. as to the accuracy or correctness thereof. This offering is subject to verification, changes in price or terms, and withdrawal from the market.

+/- 226 Acres
Applewhite Rd, Bexar County



*The above information was received from sources deemed to be reliable; however, no warranty can be implied by New Market Real Estate, LLC. as to the accuracy or correctness thereof. This offering is subject to verification, changes in price or terms, and withdrawal from the market.