

2.7 ACRES
2644 ACKERMAN
KIRBY (SAN ANTONIO), TX 78219



Zoning: C-2 (commercial Kirby)

Land Size: 2.7 Acres

Location: Outside Loop 410

Frontage: +/- 400' Ackerman & +/- 290' Wexford

Legal: CB 5098A Blk 2 Lot 1

Comments: Flat, good road frontage, utilities on site. Multiple sewer connections in back of property. In Kirby city limits. City is easy to deal with and open to the possibility of commercial, multi family or residential. Platted, with 4 curb cuts. 6" sewer connection, 2,000 gallon grease trap, and commercial water meter.

Asking: \$365,000



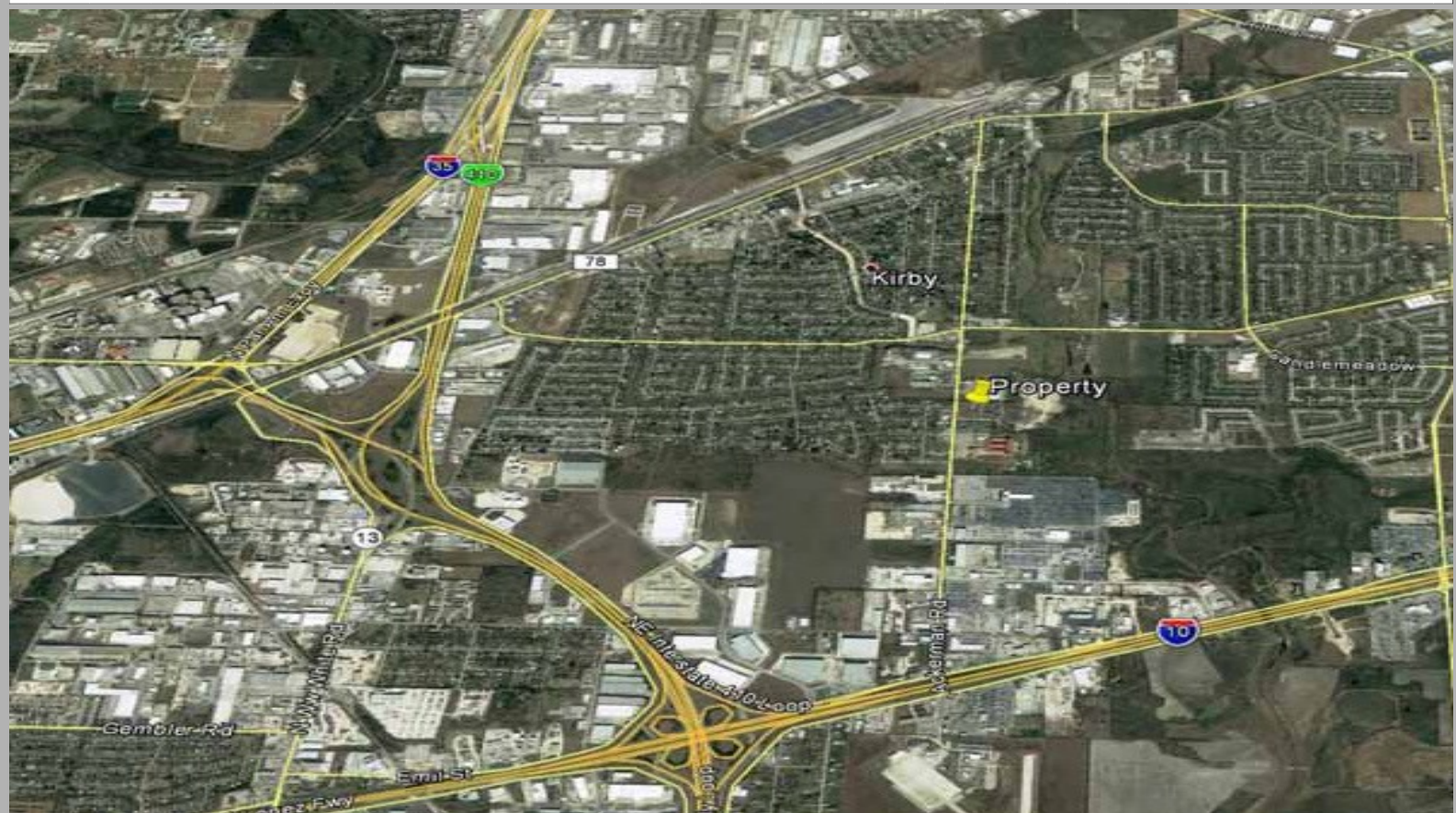
NEWMARKET

COMMERCIAL REAL ESTATE SERVICES

New Market Commercial
Real Estate Services
900 NE Loop 410, D302
San Antonio, TX 78209
Chuck Christian
210-316-0588
www.buysell.com
chuck@buyselltx.net

*The above information was received from sources deemed to be reliable; however, no warranty can be implied by New Market Real Estate, LLC. as to the accuracy or correctness thereof. This offering is subject to verification, changes in price or terms, and withdrawal from the

**2.7 ACRES
2644 ACKERMAN
KIRBY (SAN ANTONIO), TX 78219**



*The above information was received from sources deemed to be reliable; however, no warranty can be implied by New Market Real Estate, LLC. as to the accuracy or correctness thereof. This offering is subject to verification, changes in price or terms, and withdrawal from the