

+/- .73 Acres

W. Commerce, San Antonio, TX



Location: Just west of the CBD.

Zoning: I-1 and C-2 (Owners will allow property to be rezoned during feasibility period)

Land Size: +/- .85 Acres

Frontage: +/- 334' W Commerce, +/- 167' Las Moras
And +/- 167' South Alazan St.

Comments: Half a city block. Close to CBD. Several new commercial and residential projects in immediate area. Mass transit line, buses every 15 min. Fast redevelopment area.
Call for pricing

Chuck Christian, Broker
210-316-0588
chuck@buyselltx.net

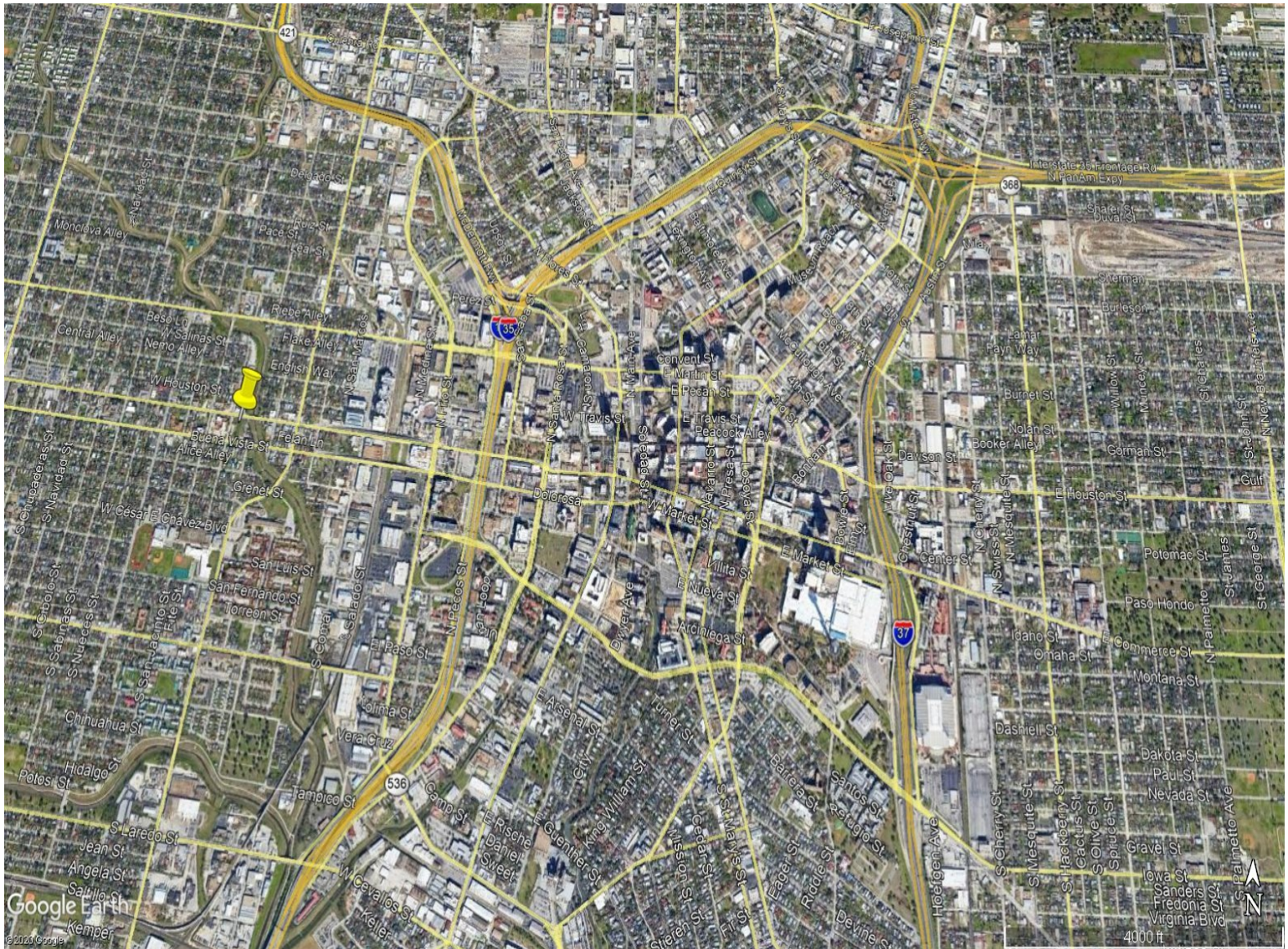
Office
900 NE Loop 410 #D302
San Antonio, TX 78209
210-348-9900
WWW.BUYSELLTX.COM



*The above information was received from sources deemed to be reliable; however, no warranty can be implied by New Market Real Estate, LLC. as to the accuracy or correctness thereof. This offering is subject to verification, changes in price or terms, and withdrawal from the market.

+/- .73 Acres

W. Commerce, San Antonio, TX



*The above information was received from sources deemed to be reliable; however, no warranty can be implied by New Market Real Estate, LLC. as to the accuracy or correctness thereof. This offering is subject to verification, changes in price or terms, and withdrawal from the market.