

Ploog Engineering Co., Inc.

814 N. Indiana Ave.
Crown Point, IN 46307 USA
219-663-2854

Owner / Operator Manual for W600 Aggregate Washer

AASHTO T11/ASTM C117 & ASTM D1140,



- 15 lb Capacity
- Universal Right or Left Hand
- 5 Way Tilting
- Stainless Steel Drum
- Direct Drive Gear Motor
- Stainless Steel Water Tube for Continuous Flow
- 115V 50/60Hz is standard
- Optional 220V 50/60Hz available

Please read these instructions thoroughly to become familiar with the operation of the machine, before attempting to run it.

Ploog Engineering Co., Inc.
814 N. Indiana Ave.
Crown Point, IN 46307, USA

**Instructions for Aggregate Washer W600-7
(starting with serial no. W600-709191305)**

Applications

The Ploog Aggregate Washer enables testing in accordance with AASHTO T11/ASTM C117, Materials Finer than 75- μ m (No. 200) Sieve in Mineral Aggregates by Washing, or ASTM D1140, Amount of Material in Soils Finer Than No. 200 (75- μ m) Sieve. These tests wash a sample of the aggregate or soil in water and allow the overflow water to fall through a 75- μ m sieve. The loss of material that passes through the sieve is calculated as a mass percent of the original sample. This washing procedure is more efficient than dry sieving.

Aggregates are automatically washed to remove clay and other fines passing a #200 sieve. Inconsistencies and the high cost of manual methods are eliminated. The inclined, motorized, stainless steel drum rotates to agitate the sample until the water overflow from the lip of the drum is clear. The drum is driven by a 1/12 hp, 115 Volt, 50/60 Hz, 1 Amp gear motor. (For 220 Volt facilities, an optional 220 Volt, 50/60 Hz, gear motor is available.) The drum tilts and locks below horizontal to flush out the washed sample. A permanent water connection with a 1/4 fpt valve is provided.

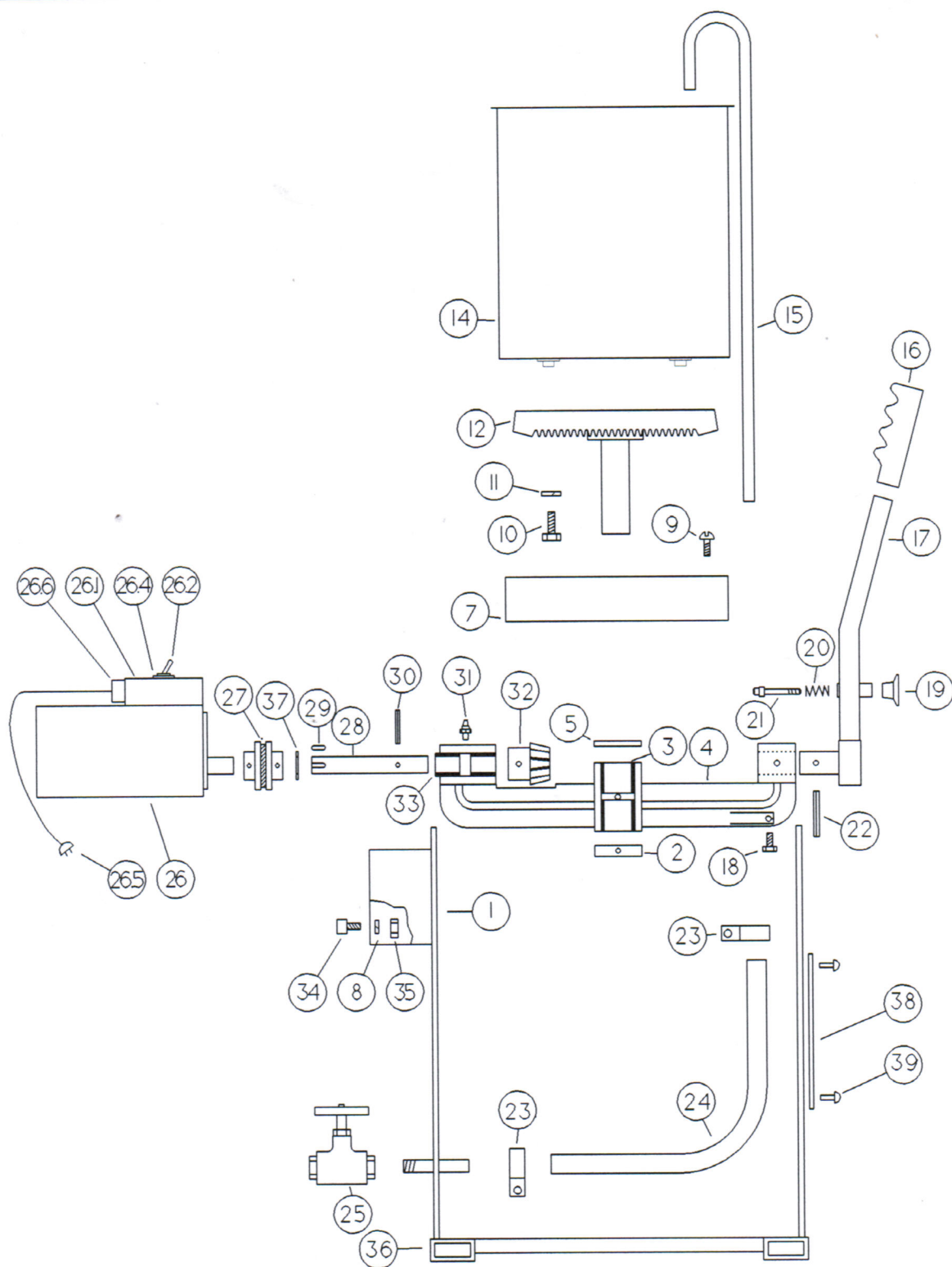
Overall dimensions are 30" x 22" x 26" with the drum in the upright position. Shipping weight is 100 lbs.

A 12" #200 sieve, and a 12" brass pan with drain are recommended, but are not included, for catching the overflow.

Recommended Maintenance

Lubricate the two grease fittings with a grease gun weekly (red Mobilith SHC100, or equivalent). Grease should be coming out of the bearing ends. Also, some grease should be kept on the gears.

The gearmotor needs no attention; it is permanently packed with grease.



Gravel Washer			
Scale: NTS		Cat.# W600-7	Drawn by: RGF
Date: 3/99			Revised: 5/2/2019
Ploog Engineering Co. Inc			
Crown Point, In. 46307			
			Drawing Number
			PA 100

PLOOG ENGINEERING CO.,INC.

CROWN POINT,IN.46307 USA

W600-7 PARTS LIST - ITEM 1500P0000

Always give complete Serial No. when ordering parts

<u>Ref.#</u>	<u>PART NO.</u>	<u>DESCRIPTION</u>	<u>NO. PCS</u>
1	1500P0001	Frame	1
2	1500P0015	Collar	1
3	1500P0016	Bushing	2
4	1500P0002	Yoke Assembly w/all bushings	1
5	1500P0017	Washer	1
7	1500P0003	Guard	1
8	1500P0018	Lockwasher	4
9	1500P0019	Bolt	4
10	1500P0020	Hex-Capscrew	4
11	1500P0021	Lock Washer	4
12	1500P0004	Large Gear Assembly	1
14	1500P0005	Bucket	1
15	1500P0006	Flow-Tube	1
16	1500P0022	Grip	1
17	1500P0007	Handle Assy.	1
18	1500P0023	Hex Capscrew	1
19	1500P0024	Knob	1
20	1500P0025	Spring	1
21	1500P0008	Shotpin	1
22	1500P0026	Rollpin	1
23	1500P0027	Hose Clamp	2
24	1500P0028	Hose	1
25	1500P0029	Valve	1
26	1500P0079	Gear Motor Assembly	1
26.1	1500P0079.1	Conduit Box	1
26.2	1500P0009.2	Toggle Switch	1
26.3	1500P0079.3	Capacitor	1
26.4	1500P0009.4	Legend-plate	1
26.5	1500P0009.5	Cord	1
26.6	1500P0009.6	Cord-grip	1
27	1500P0030	Coupling Assy.	1
28	1500P0010	Shaft	1
29	1500P0011	Woodruff Key	1
30	1500P0031	Rollpin	1
31	1500P0032	Greasefitting	2
32	1500P0012	Small Gear	1
33	1500P0033	Bushing	2
34	1500P0034	Socket Head Capscrew	4
35	1500P0035	Hex Nut	4
36	1500P0036	End Caps	4
37	1500P0037	Nylon washer	1
38	1500P0038	Nameplate	1
39	1500P0039	Nameplate rivets	4
	1500P0050	Gear Grease (1 Pint)	