

Salon Centric – Safety Program Administration

Safety Consulting, EHS Augmentation – CalOSHA Case Study

Challenge

Salon Centric is a growing distributor of L'Oréal and other hair and beauty care products. They have distribution facilities throughout the nation. Because of their relationship with L'Oréal, Salon Centric has a robust safety policy which has resulted in their facilities being among the safest in the world. They apply their safety policy to both internal personnel and anyone working in one of their facilities, including during construction. They have a goal to avoid any sort of negative publicity, and they would take it just as hard if a contractor was injured in one of their facilities as one of their own personnel. When they undertook the construction of a larger distribution facility in Arvin California, they found themselves with two problems that they couldn't solve. The first was that their EHS officer was already managing their safety program at two operating facilities and didn't have enough time to oversee a construction project. The second problem was that the Arvin location is far away from service providers so they couldn't find someone local to provide help. Salon Centric needed help.

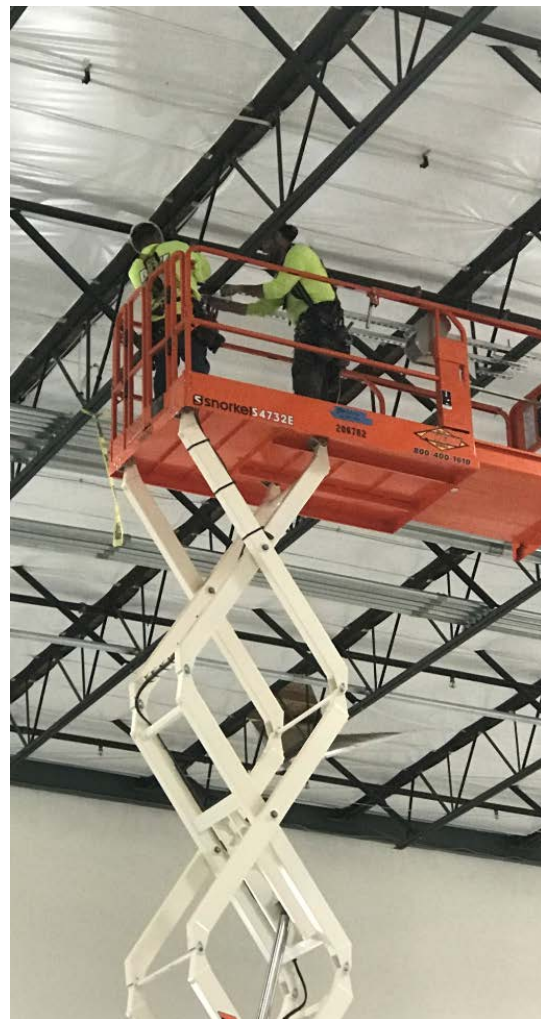
Solution

Salon Centric turned to John Mark Project Management to initially consult on setting up a 3rd party administered project. JMPM is a Cal OSHA 510 Certified Safety Consultant. Additionally Jack Kozakar has acted as a Safety Officer while a Lieutenant in the US Navy, as a Journeyman Engineer, and as a 3rd party consultant. This broad experience allowed Jack to provide immediate help.

Salon Centric also looked to JMPM to source a 3rd party project administrator to supplement their full time EHS officer. JMPM took on the assignment and immediately took the various elements of the existing Salon Centric Safety Program and used them to create a check list of safety reporting that condensed all of their programs into a single document. JMPM also undertook administration of the project as if they were undertaking a military post. The culture of "Safety first – no excuses" created an environment where contractors realized that working unsafely would result in loss of work if not loss of a job.

Results

JMPM succeeded in managing the construction of Salon Centric's State of the art Distribution Project without a single injury. JMPM utilized a daily permit process whereby the contractors had to provide a plan of dangerous activities and then JMPM inspected the way that the contractors were mitigating risk several times a day. JMPM reported on over 50 safety incidents, including incidents of men working aloft without proper gear or precautions, men working without proper personal protective gear, men working in spider infested areas without precaution, men not taking precautions from falling or tripping, and men eating and/or drinking in their work environments.



Project Profile

Square Footage:	476,000 SF
Project Duration:	13 months
Financial Savings:	up to \$10,000,000

Services Provided

- Strategic Planning
- Project Visioning
- Scope Analysis
- Program Set-up
- Training
- Team Selection
- Safety Program Administration
- Contractor Safety Reporting
- Environmental, Health and Safety Officer Augmentation
- Safety Inspections
- Project Management

For more information, contact

Jack Kozakar
+ 1 213 215 3605
jack@johnmarkre.com

