

Richland County Soil Conservation District

SUMMER 2024

~From the Desk of the District Conservationist, Jon Quast~



As we're heading toward summer, enjoying the warm sunshine and longer days I'd like to focus on bringing our conservation message to the public. First, who is the Natural Resources Conservation Service, i.e. NRCS? We are USDA's primary private lands conservation agency who work voluntarily with producers and communities to find the best solutions to meet their unique conservation and business goals. Second, what is NRCS's conservation message and how does it impact me?

Our message is simple, "we deliver conservation solutions so agricultural producers can protect natural resources and feed a growing world." For more than 80 years, we have helped people make investments in their operations and local communities to keep working lands working, boost rural economies, increase the competitiveness of American agriculture, and improve the quality of our air, water, soil, and habitat. However, the public's awareness of what our agency does has had its challenges and we aim to correct it.

One way we're going to focus on the future is through outreach events such as partnering with Richland Soil Conservation District to put on a geology tour of Richland County or ND NRCS as a whole being represented at the North Dakota State Fair this summer.



Another way is to show the types of conservation activities that are available and may be beneficial to your operation whether it be small scale urban agriculture, a large row crop enterprise, or a family livestock operation. There is something for everyone and I encourage all of you to watch the Conservation at Work series where you'll learn about the benefits of conservation practices directly from the farmers, ranchers, and forestland owners applying them. Currently there are 78 short videos with nearly 100,000 views. You can watch all of these videos searching Conservation at Work video series or by visiting the following website: <https://www.farmers.gov/conservation/conservation-at-work>



NRCS offers voluntary programs to eligible landowners and agricultural producers to provide financial and technical assistance to help manage natural resources in a sustainable manner. Through these programs the agency approves contracts to provide financial assistance to help plan and implement conservation practices that address natural resource concerns or opportunities to help save energy, improve soil, water, plant, air, animal and related resources on agricultural lands and non-industrial private forest land. Producers can learn more or apply for a program by contacting your local Service Center.

Contact the Richland County NRCS office by stopping in, by phone: 701-642-5997, ext. 3 or email: Jonathan.quast@usda.gov

USDA Natural Resources Conservation Service
U.S. DEPARTMENT OF AGRICULTURE



USDA is an equal opportunity provider, employer, and lender.

**Make & Paint Rain Barrel Workshop
will be held at Crooked Lane Farms, Colfax
on June 11th & 18th from 6-8 pm.**

This years class has filled up fast! Thank you to everyone that continues to make this a successful workshop! If you couldn't get signed up in time this year, check in next spring to sign up.

The event is sponsored by the Richland Soil Conservation District, Wilkin County SWCD, and Crooked Lane Farms.



Pollinator Night

August 28, 2025 from 6-8 PM

Location: Crooked Lane Farms.

Watch for more information to follow on
our Facebook Page and Website:
richlandscd.com



LADIES NIGHT 2024

By Billie Jo Hinders, District Clerk



"Hats Off to Conservation" was the theme for this year's Ladies Night. A variety of hats were worn by the ladies for an evening of information education and motivational fun.

Ladies Night was started in 1996 to educate women in Richland and Wilkin counties about conservation programs and services available through the districts with hopes that they would become more involved in conserving their land. Ladies Night has evolved to include all women, urban and rural in its program.

The Mistress of Ceremonies, Robbie Daniels, did a great job keeping everyone engaged throughout the night.



Our conservation education was Rain Gardens, given by Esther McGinnis, NDSU Associate Professor. Her presentation emphasized the importance of rain gardens by discussing plant selection, placement of the garden, and rain barrels.

The night's entertainer, Noah Sonie, who has been described as one of Minnesota's premier performers, had the audience in awe with his magical and mind-blowing mentalism skills.

Door prizes and raffle prizes were won by many. A \$50 donation was made to Bio-Girls, which supports girls in building their self-esteem. Thanks for another successful, fun, learning event! See you all again next year!



Notes from the Tree Cooler by Keith Kinneberg

In the last newsletter I asked a simple question and that was “where was the rain this past summer?” I now ask the question “where is the dry weather lately?” Tree planting has slowed down considerably and trying to find a dry spot has been non-existent. With barely any snow this winter, we were hoping for an early start to putting trees in, but mother nature had other plans. If you received trees this past spring either by us planting them for you or you are planting on your own, please remember that they are like babies, and you need to nurture them along to help them grow into great looking adults. The winter has been busy with tree orders and planning for the 2025 cost share programs. We are now taking applications for the OHF cost share program and have a deadline coming up by July 1st to apply. This would be for the 2025 spring plantings. Please contact the office for more information. Just a reminder also that with the costs increases for us purchasing the trees from the nurseries mean we must increase our costs for the services also. We try to keep those increases to a minimum so we can keep those services available to you at the lowest possible rate. I want to remind you also that we do provide a roto-tilling service and small acreage seeding of grass. One final note and that is this fall when you receive the fall newsletter, we usually include the tree handplant order form. Please try and get those orders in early and don't put it off until February. The tree supplies dwindle fast, and we may not be able to order the trees that you want. Also, on the form notice the increase on prices. We will do our best to get the trees you want.

With the early dry spring we had and the terrible winds, a lot of dirt was blowing. Maybe it's time for more shelterbelts and cover crops to keep that precious Richland Soil where it needs to be. We are here to help you with both NRCS and SCD programs.

Have a great, safe and relaxing summer and enjoy as much family time as possible.



SUMMER 2024 PRICE LIST

Grass Seeding:

\$25.00 an acre– with minimum charge of \$300

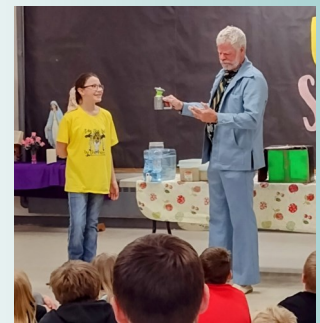
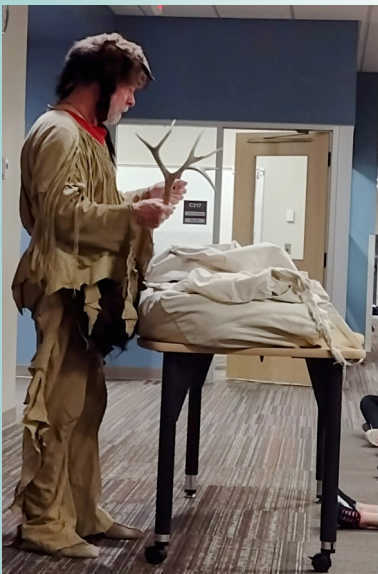
Rototilling:

\$75.00 per hour-with minimum charge of \$250 (Tilling will be used for tree planting contracts and grass seeding areas. Will also do large garden areas if time permits. Other uses may be available if approved by Board of Directors.)

Tubes & Stakes: 4 foot (vented style) \$4.50 each, \$6.00 w/stake, \$1.50 for stake

Stewardship Week 2024

Tom Gibson Tree Promotion Program visited with all Richland County Schools throughout the week of April 16th. This is the last year that we get to have the privilege of Tom Gibson teaching our students about history and conservation in a fun and interactive setting. He has left an impression on many people's lives since he has been a free-lance environmental educator/entertainer since 1986. We would like to thank Tom for his efforts and involvement in education and hope he enjoys retirement.



319 Antelope Creek Watershed News

By Jennifer Klostreich



Mother nature always seems to even things out, very little snow this winter, more spring and early summer rains. What will the summer bring? Dry hot weather or will we remain cooler and wet. One thing is for sure no two growing seasons are ever the same. So, what are we up to in our watershed project, I continue to water sample on the Wild Rice, Antelope Creek North, and South Branch. This allows the District to continue to administer a EPA 319 grant since 2006. This year we will also have a few more programs that we are promoting. Continuing from last year the *Red River Basin Wildlife and Water Quality Enhancement Pilot Program*, this program can help with small areas that are not productive and can be seeded back to grass for wildlife habitat for either a 5 or 10 year period. The annual rental rate, for 2024 in Richland County it is \$92.10/acre and 60% cost of the grass seed. An addition to this program this year will be cover crops, that can be planted for just one year. If you have prevent plant (PP) or want to follow a production crop with cover crops this might be a great opportunity. The cost share would be 60% of the cost of the cover crop seed.

We will also be partnering with the *Red River Basin Commission on a Regional Conservation Partnership Program (RCPP)* project that was accepted over the winter for North Dakota and five counties in Minnesota. This project will be contracted through the Trusted Advisor Partnership (TAP). The TAP program are your local independent certified crop advisors or (CCAs) that have taken the extra step to become certified as a TAP advisor. Check with your local CCA that you work with to see if they are also a TAP advisor since this program will grow over the next 5 years.

I also continue to work with rural homeowners on projects on their farmstead, such as Septic System Repair or Replacement if your septic is not working correctly or was installed improperly years ago this is a great program to help you get it updated. There are a few criteria for this program so call to see if you are eligible. Jen Klostreich 701-642-5997 ext 3. Have a great summer!



REDUCE INPUT COSTS

Quit fighting with unproductive acres, saline soils, or smaller hard to farm areas.

ADDRESS PROBLEM ACRES

WET AND SALINE PRONE

60%
COST
SHARE

UP TO
\$90
AN ACRE
RENTAL RATES



HOW IT WORKS

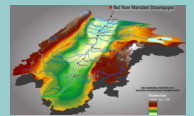
Richland County is offering cost-share assistance and rental payments for establishing vegetation on wet and saline prone areas while maintaining your base acres. Take the first step towards a more profitable future and contact your local Soil Conservation District office today - free onsite consultations available. Jennifer Klostreich @ 701-642-5997 ext. 3.

Geology Tour

Date: August 13, 2024 Transportation available via bus.

Presenters: Dr. David Hopkins, Soil Geographic Science and Keith Anderson, retired NRCS Soil Scientist

Watch our website (richlandscd.com) and Facebook page for more information. You can also call the office to RSVP at 701-642-5997 ext. 3.



2024 Third Annual Photography Contest

Focus on Native Trees, Shrubs with Wildlife

This year our photo contest features trees and shrubs throughout the seasons. Pictures of trees and shrubs from all 4 seasons will be able to be submitted. We are looking for photos that show new budding and flowering trees and melting snow in the spring and full green canopies in the sunshine in the summer. Maybe you could even feature newly planted saplings! Bonus points are allotted if you can capture wildlife in the photos as well. If they are in the fall and winter, try to show the fall colors and the blankets of snow on the trees and shrubs, or the frost.



You may submit entries to billie.hinders@nd.nacdnet.net until **September 30, 2024**.

Richland County Soil Conservation District
1687 Bypass Rd.
Wahpeton, ND 58075

NON-PROFIT ORG.
U.S. POSTAGE PAID
WAHPETON, ND 58075
PERMIT NO. 146

Return Service Requested

All programs and services are offered on a non-discriminatory basis, without regard to race, color, national origin, religion, sex, age or handicap.

Ways to Find Us:

Website: www.richlandscd.com

Facebook:
<https://www.facebook.com/richlandndscd>

Emails:
jen.klostreich@nd.nacdnet.net
keith.kinneberg@nd.nacdnet.net
billie.hinders@nd.nacdnet.net

Phone: 701-642-5997 ext. 3

OFFICE STAFF:

Jennifer Klostreich- **Watershed Coordinator/
District Manager**

Keith Kinneberg- **District Technician**

Billie Jo Hinders- **District Clerk**

Jon Quast- **NRCS District Conservationist**

Tanner Tougas- **NRCS Biologist**

Amy Gnoinsky- **NRCS Business Tool
Specialist**

Dianne Kriz- **NRCS Contractor**

Brock Pearson- **NRCS Soil Conservationist**

Riley Breuer- **NRCS Soil Conservationist**

Jason Nelson- **NRCS Wetland Specialist**

OFFICE HOURS:

8am - 4:30pm Monday- Friday
701-642-5997 Ext. 3

TENTATIVE BOARD MTG SCHEDULE

July 9th

August 13th

September 10th

November 12th