

Original, affordable artwork from fantastic contemporary artists. Regular events in store!
Free consultations, worldwide delivery.

**Upstairs at Putney Exchange Shopping
Centre, SW15 1TW**

www.BobCatGallery.co.uk



Alexandra Robb

Alex is an artist and illustrator living in West London. She has had a lifelong interest in natural history and ecology and has chosen the natural world as the subject of her work.

Alex undertakes commissions in both watercolour and pen and ink.

She is also a keen writer and has written and illustrated two children's books.



Alison G. Saunders

In my artistic journey, colour emerges as the primary medium through which I express emotions, capturing the nuanced depths of my own sentiments and echoing the sentiments of those who view my work. Each hue becomes a language of emotion, a palette that reflects the kaleidoscope of feelings, moods, and experiences that colour our lives.

Central to my artistic expression are the circles that populate my compositions, each one a tangible embodiment of a hug. These circles, ranging from broken to solid, from expansive to intimate, serve as visual embraces, offering solace, warmth, and connection. Some are adorned with the luminous touch of real gold leaf, transforming them into golden hugs, symbols of enduring affection and compassion. Through my artwork, I seek to remind us all of the universal need for embrace, the reassurance that we are deserving of love and connection.



Anarkali Checkrahamatoula

Anarkali is a French born London based artist, working in oil, pastel or ink pen. She has recently started working with different printing techniques, incorporating inks or paints to the prints.

Much of her work has a cross cultural narrative based on her extensive travels and her familial links to India. Sketchbooks and travel diaries are an integral part of her art process.



Anne Sweet

Anne is a mixed media artist based in London, who loves to experiment with different styles and mediums, giving her a broad portfolio including pastels, acrylics, ink and printing techniques. Anne creates abstract works, portraits, still lifes and various mixed media pieces on canvas. Anne is a very versatile artist not afraid to try new and different things.

Anne has exhibited at Battersea Arts Centre and at Rosie Q's Art Cafe in Wimbledon, as well as regularly showing with BobCat Gallery, and has painted numerous commissions.



Annie Mitra

Annie Mitra is a contemporary and figurative artist, who works mainly in acrylics.

Her paintings take a close look at nature and objects around us and although often quiet in their presence, are powerful and engaging to the viewer.

Annie has written & illustrated several children's books and her work has been acknowledged by HRH Queen Camilla.



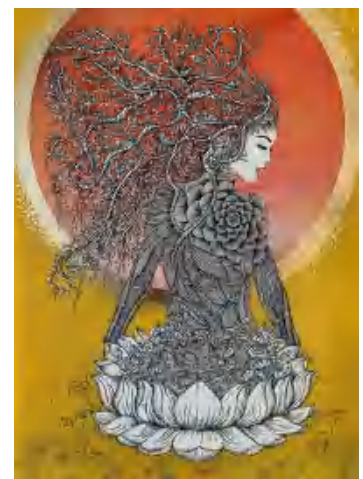
Ashima Kumar

Ashima's work is a dynamic fusion of fine art & graphic design, redefining the boundaries of contemporary visual expression. Inspired by the intricate beauty of the natural world & infused with Asian cultural influences, her work seamlessly merges the natural and the abstract, creating visually arresting and thought-provoking compositions.

Through expressive strokes and meticulous detail, Ashima captures the essence of her subjects, inviting viewers into a world where nature and the human psyche intertwine. Her exploration of form, color, and texture transcends traditional boundaries, creating immersive narratives that evoke emotion and contemplation.

Rooted in a deep connection to the natural world, Ashima's artistic process is a reflection of her personal journey. She skillfully deconstructs patterns and forms observed in nature, integrating elements from Indian, Persian, and Japanese art into her contemporary representations. This fusion of cultures creates a unique visual language that invites viewers to reconnect with their environment and contemplate their place within it.

Beyond the surface beauty, Ashima's art delves into profound questions of spirituality and human psychology. By exploring the depths of consciousness, she offers a visual meditation on the interconnectedness of all things, encouraging introspection and contemplation.



Bels Watson

My work is immersed in a semi abstract painterly language, characterized by a strong interest and passion for colour. I paint to create happiness through colour and emotion, and every painting tells a story.

I have exhibited with the Farnham Art Society, Fulham Art Society, the Wimbledon Art Fair, The Hurlingham Club, Cannizaro House Wimbledon and the Frame Gallery in Hampshire.

I went to The University of Creative Arts for my Foundation and The University of Arts and Education to study Art Therapy. I am a regular painter at Heatherley Art School in Chelsea and I paint from a studio at home in Fulham.

My work has evolved from representational to abstract over the years. My passion has always been colour. I paint through my emotions, using an infinity of colours. I allow exploration and intuition to guide me. I hope to create joy through colour.

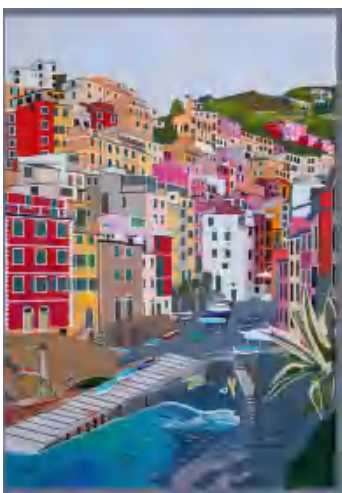


Brian Parker

I am a visual artist based in Essex. Although I trained as a scientist and hold a PhD in chemical engineering, I have had an involvement in the visual arts for over 30 years. In 2008 I enrolled on an Access to Art and Design course and discovered a deep need to paint.

As I painted I noticed that I see outlines and edges rather than volumes and that I have a very strong sense of pattern. My personal style of looking and depicting is evolving to incorporate these influences, together with a powerful sense of colour and a strong desire to simplify. My approach to a painting is to include the absolute minimum of information and detail necessary to convey my personal view of the composition and to do so with the minimum palette of flat colours.

I am a visual artist and my aim is for my work to stimulate the visual sense by creating beautiful images and to leave the viewer with a feeling of pleased satisfaction. I am much more interested in the aesthetic produced by the work than I am in its thematic content, which ranges from figurative to the purely abstract.



Camilla Leppard

Camilla Leppard is a self taught cyanotype artist and photographer. For her, photography has always been a magic medium, to be able to capture a moment, a memory. Shortlisted for the RA Summer Exhibition in 2024, Camilla is also a member of Surrey Artists Open Studios.

Cyanotype photography is a camera-less technique that involves placing an object on paper coated with a solution of iron salts, before exposing it to UV light and washing with water to create beautiful white images on a deep Prussian blue background. It is a way of creating subtle and beautiful photograms of flowers and plants using the sun. Preserving the image of a flower or plant and creating a memory. Inspired by the plants and flowers from her garden and the natural world around her, she creates prints, each one original and every time different according to the sun at that moment. She loves the different shadows and details that this form of art can create.



Candice Wu

Candice Wu is a glass artist, designer and photographer based in West Sussex, UK. She graduated with a B.Design (Visual Communications) from UTS Australia, after which she worked in the photographic industry. In 2010, she did a taster course in glass blowing and instantly fell in love with this mesmerising medium. For her, glassblowing is the perfect confluence of art and science, as well as a meditative practice that touches on the divine. Each blown work embodies her emotions and state of mind in that present moment, frozen in time.

Whether through experimentation or learning about the world at large, curiosity and a thirst for knowledge is the basis of Candice art practice. She explores transpersonal relationships, perception and illusion through patterns, transparency, hidden meanings, and the play of light and shadow. A penchant for lamps and lighting is the impetus behind her preoccupation of creating illuminated sculptures.



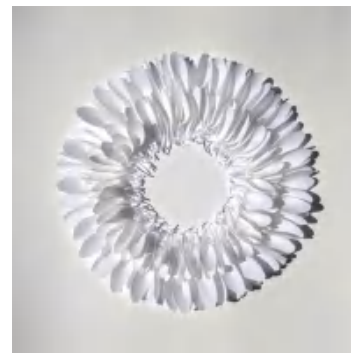
Carole Bury

Carole Bury designs and crafts paper textiles, using embroidery and constructional techniques. She produces work which has a beauty, depth and quietness.

Her inspiration comes directly from the endless drawings made in gardens and landscapes. Working in landscapes, she is presented with rhythms, pathways and marks, which invade the work slowly and unobtrusively.

Carole lives and works from a small village high up in the Cotswold hills. Walking through the fields and woods, is guaranteed to reveal geological treasures, fossils and rich landscapes.

She is a member of ArtCan, Pure Arts Group, and the Cheltenham Group of Artists. Her work has been included in ING Discerning Eye and RWA Open in Bristol. Carole studied art at Cheltenham College of Art and Fine Art Embroidery at Manchester Polytechnic.



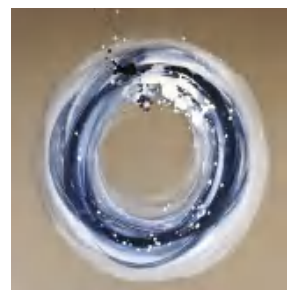
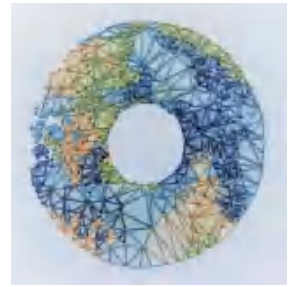
Caroline Banks

Caroline Banks is an Anglo-French artist now based at Collage Arts in Wood Green, London. Graduating in Mixed Media Textiles, her career has included art and design including fashion and interiors. In 2001 she moved to India, remaining in Asia till the end of 2007 when she returned to the UK. After a long break from exhibiting, she began showing her work once more in 2014 and is now fully focused on her art career.

She works with galleries and art consultancies as well as exhibiting at art fairs including The Other Art Fair both in the UK and the USA and the Affordable Art Fair in London. Much of her work is commissioned by both private individuals and corporations including the Berkeley Group. Caroline publishes a weekly blog through her website and is a member of the ArtCan advisory committee.

The energy and memory of gesture, the sense of something vitally important yet forever intangible, the transference of energy from one form to another in a cycle of death and rebirth, these are all elements of Banks' research and exploration. Her work, while abstract, is firmly grounded in observational drawing, the starting point for all subsequent mark-making. Influences are many and various, including archaeology, the Tao, Transcendental Meditation, quantum mechanics, astronomy and performance.

The chosen materials of gesso, ink and sometimes metal gilding, hold elemental and personal associations, adding another layer to her expressive and gestural mark-making. The calligraphic qualities of brush with ink result in paintings which, whilst full of movement, are also contemplative and timeless, meriting slow and repeated viewing.

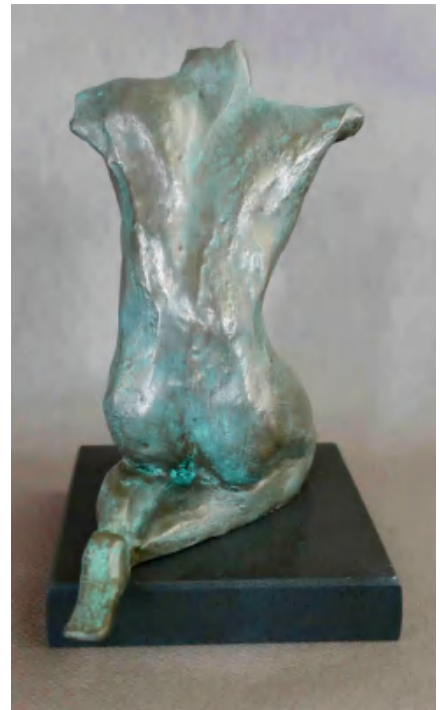
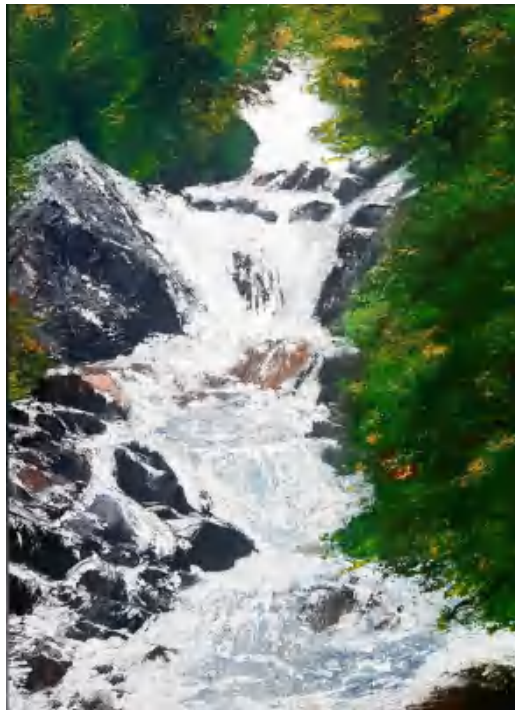


Caroline Wheaton

Caroline Wheaton is a self-taught, British artist and sculptor based in London and Chamonix. She paints mainly in acrylic and ink. She sculpts using stone, cast metals, plaster-based materials and resins.

Her painting practice reflects the mountain environment in which she lives. Landscapes and mountain sport dominate her work as she captures the physicality of her surrounds and the people who enjoy this extreme terrain.

This physicality and her fascination with anatomy and physiology is explored more deeply in her sculpture, which centres on all things human. How we are put together, what makes us tick, how we adapt to our wider environment, how we portray ourselves... past and present. Caroline has exhibited widely in the UK and France and in group shows elsewhere in Europe and the US.



Catarina Diaz

Catarina has solidified her position in the art world, garnering multiple awards and recognition from the President of Portugal for her exceptional talent. Her work has been showcased on a global scale, from digital installations and exhibitions to museums and art fairs. Notably, her pieces have graced prestigious venues such as the Saatchi Gallery & the Carrousel du Louvre in Paris. Her art has also been featured in a variety of media, including TV shows, art reviews, podcasts & publications like The Flux Review, The World of Interiors, House & Garden & Vogue.

BBC art critic Maeve Doyle has described Catarina's work as "very transcendent pieces mixing realism with naturalism and spirituality." At the heart of Catarina's artistic process is collaboration. Working with other artists, designers, filmmakers, and composers on various projects, she creates minimalist collages that inspire viewers to search for a deeper meaning & embrace the beauty of imperfection, duality, & transcendent existence.

Catarina's art is a reflection of her deeply personal experiences & memories. Her past lives revisited by her present self, particularly her young childhood in Africa, serve as a rich source of inspiration. These experiences have not only shaped her art but also serve as a cathartic tool, providing relief from the pressures of the world. Her art is a window into her emotional depth and personal significance, inviting viewers to connect on a deeper level.

This storytelling alludes to the possibility of nature restoring tranquillity to the chaos of the world, framing issues related to the rescue of feminine power and identity and humanity in general.



Catherine Sweet

I'm a pint-sized visual artist from London who loves animals, horror films, good food, heavy metal and my wonderful husband. I created BobCat Gallery to sell not only my own work, but to showcase beautiful, affordable and original artwork on a small scale, and to give emerging artists a positive selling experience.

A self-taught artist living and working in London, I primarily use acrylic, oils and found materials on canvas, usually creating small scale abstract pieces that people can easily find space for in their homes. I favours bright colours and plenty of texture, finding most of my inspiration in the natural world and in my favourite music.

My practice has adapted in recent years due to deteriorating motor function - I have Hypermobile Ehlers-Danlos Syndrome, so difficulty gripping paint brushes has led to more experimentation with palette knives, stencils and spray paints, plus air-drying clay, collage and stitching.

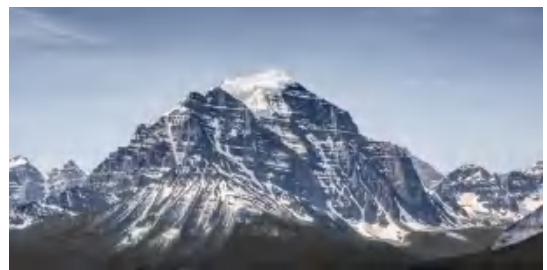


Christopher Sweet

Christopher is an urban, landscape and wildlife photographer. From a young age, Chris has been interested in photography as a way to express himself, and to capture the moments that most people miss, or take for granted.

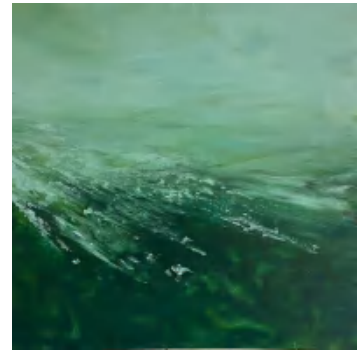
Chris has no formal training in photography, but has a deep-seated love of being behind the lens. He enjoys experimenting with different disciplines, and has developed a diverse set of skills that lend themselves to urban, landscape and wildlife photography.

Chris has lived in a variety of small towns and villages around the south east and west of England, and grew up with nature on his doorstep. A move to London in 2001 allowed him to embrace the hustle and bustle of urban life and delve into the world of street and urban photography, however he still loves immersing himself in the natural world.



Debbie Tearle

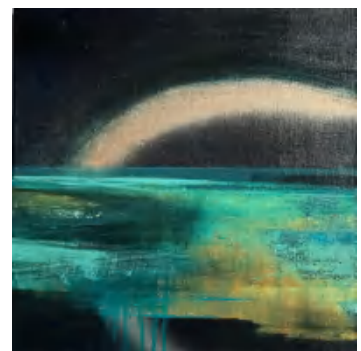
Debbie is a painter living in Surrey, UK. She creates abstract and semi abstract artworks using watercolour and acrylic inks or oils and cold wax medium. Her experience of experimentation with a variety of techniques enables her to be flexible and select the appropriate medium and tools for expressing a specific vision or idea. Within her range of work, she enjoys developing textural layers and exciting marks within her pieces, but also enjoys creating fluid, ethereal images.



The landscape is a constant source of inspiration. Her work is an expression of experiences and observations, the relationship between nature and the individual. Debbie often uses materials gathered on her walks in the landscape which she uses in the process of creating an artwork. Recently she has begun exploring ways to incorporate natural inks and earth pigments into her work.



Debbie has exhibited in Surrey and in London in group shows, art fairs and galleries. She is a member of ArtCan, recently one of four curators for their Fiesta! exhibition. She regularly curates the 'In My Mind's Eye' exhibition at West Horsley Place.



Despina Symeou

Despina is a Painter and Printmaker who lives and works in London. After the study of art forms focusing on fine art, printmaking and photography, Despina specialized in Jewellery Design, gaining a B.A.Hons Degree from Middlesex University. In recent years she has returned to the two dimensional formats that had originally fired her imagination, predominantly in etching.



The human form has been her preferred starting point for most of her projects, and an eye for the interesting and sometimes unexpected elements add to the narrative as the work progresses.

Despina began showing her figurative work in 2010 with her solo show Skin Shapes. Since then she has exhibited her work in and around London with the Printmakers Council, biannually shows work at The Affordable Art Fair (UK), and as a member of ArtCan, she collaborates with international artist groups which enables her work to reach a wider audience.



In 2018 Despina was shortlisted artist for The Royal Academy Summer Exhibition. Many of her paintings and prints are in private collections worldwide and her etchings are held in the Victoria & Albert Collection Fund and the Scarborough Museum Trust.

Despina was the 2020 Prizewinner for Island2Island at the Velorose Gallery, Barbican, London.



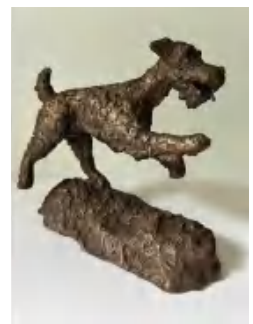
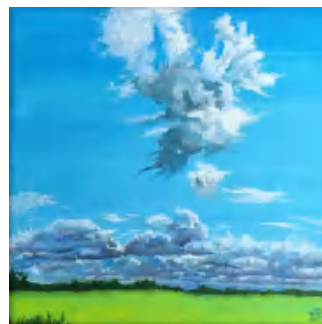
Diana Burch

Diana explore the fragility of the earth and of the individual through drawing and painting which informs developments into sculpture and installation. Physical locations are ever-changing environments, a metaphor for cause and effect in emotional landscapes.

Influenced by personally significant places where memory plays a significant part, views are altered by a glimpse of light or a fleeting shadow. Conditions shape cloud formations and cause water to form trickles or torrents – or to disappear.

Diana is inspired by the idea that, no matter how ancient the land, it is constantly being renewed by the layering of seasons and human interactions. Often her process is a negotiation between herself and the materials. She uses traditional methods to make drawings and paintings as well as using found objects from the site to apply ink or paint, layering light, form and movement.

Diana's work represents times of stillness in places that are special to her, spent in that active but restful state of observing and responding to the moment.



Di Phelps-Lister

In our increasingly complex and busy world, Di's work tries to give the viewer time and space to reconnect with the world around us.

Her work is an instinctive reflection of the landscape in various parts of the country and are personal responses to, and memories of, places she has visited.

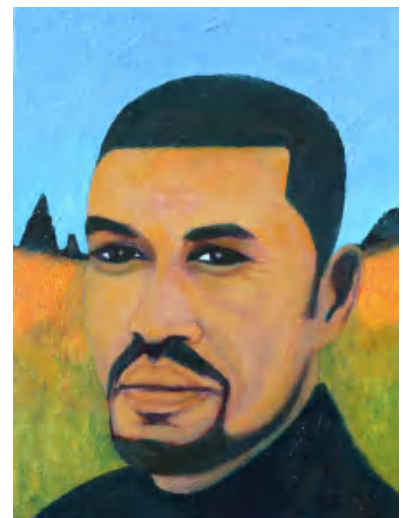


Eugene Power

Eugene Power studied painting at Falmouth School of Art and University of East London, where he did his masters degree. He has a PGCE in Art & Design in Further Education, and for the past 30 years has taught fine art in Adult Education and Further Education colleges.

Over the years he has participated in many group shows and worked in collaboration with artist groups, such as the Euro 8 Group, Irish Artists in Britain, and with the photographer, Antonio Nodar, on Portrait to Self-Portrait, sponsored by the Nando and Else Peretti Foundation. He has work in private collections in UK, Europe, South Africa and US.

From a beginning as an abstract painter he has evolved a figurative style that harnesses the strong expressive colour of his earlier abstract work. His recent paintings explore the portrait image as an expressive vehicle. He is currently developing a series of 'fantasy still lifes' concerned with climate change and the illogical world of the subconscious mind. Other interests include photography and travel.



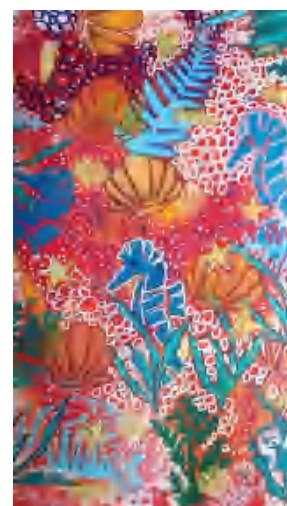
Felicity Ruth Prazak

I'm a visual artist that loves exploring different techniques and media, currently exploring stencils. Art is my passion, my life blood. It gives me strength and insight to see the world. Capturing the landscape or scene before me, I am given a chance to infuse it with life, forego the realism & blend into virtual reality as I see it - each painting is a record of that moment in time.

I want to show the beauty of everything. My engagement as an artist with my subject matter takes on a life of its own while the painting/art piece is executed. The push and pull of the brush stroke and the eye continually cast over the subject; the connection is electrifying.

This relationship between myself and the subject is paramount to my capturing and recording what I can, before it is lost or changed. Striving to give the work justice can start with a satisfaction that comes from just seeing different colour paint on the surface. Working into the piece, I might need to draw and re-draw the lines so that they don't lie. The re-drawing is part of the piece and nothing is rubbed out. Indeed, like all the mistakes we make in our own lives they become part of our make-up. Part of who we are.

I often begin with a watercolour wash and then draw the scene with a gel pen. The fluid ink, unlike a pencil can not be erased. In fact, I rarely think of this as a mistake but a process. I want the viewer to know what I can tell them about it, through my artwork. I also run workshops & community projects to help participants to feel valued, to tap into their creativity and enhance their well being, and recognize their contribution.

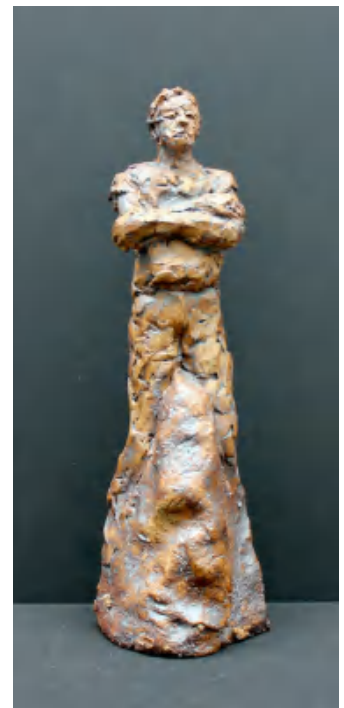
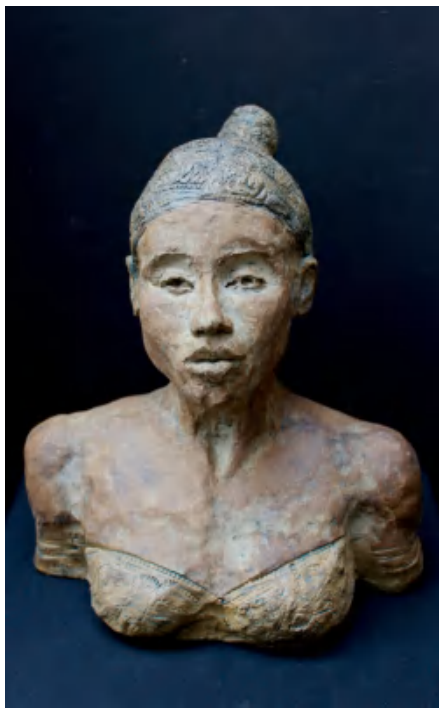


Gillian Brett

Gillian Brett is a Chiswick based artist who works from life to create expressive and sometimes other worldly sculptures as a reminder of our shared humanity.

With a classical training in sculpture, and a regular at Putney Art School, Gillian chooses not to be a slave to reproducing reality but focuses on expressive, creative sculptures. Her works are realised in ceramic, porcelain, bronze, resin, plaster and jesmonite.

Gillian teaches at Chiswick Art School and is happy to work to commission.



Isabel Wooler

I am a figurative artist, specially interested in the play of light on natural scenes, people and landscapes.

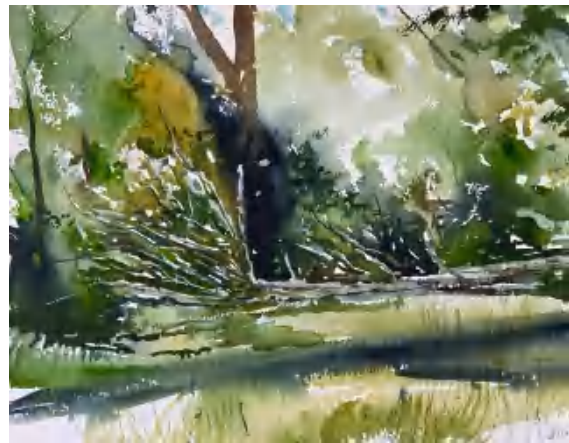
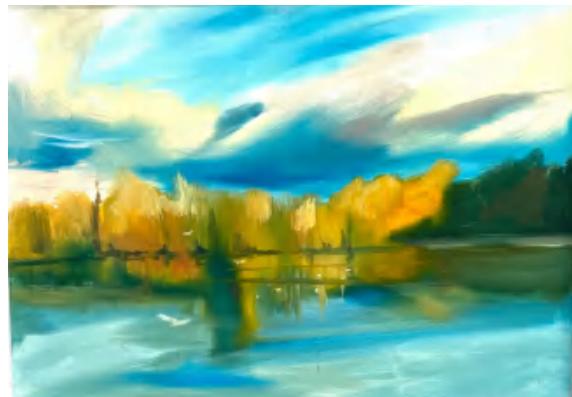
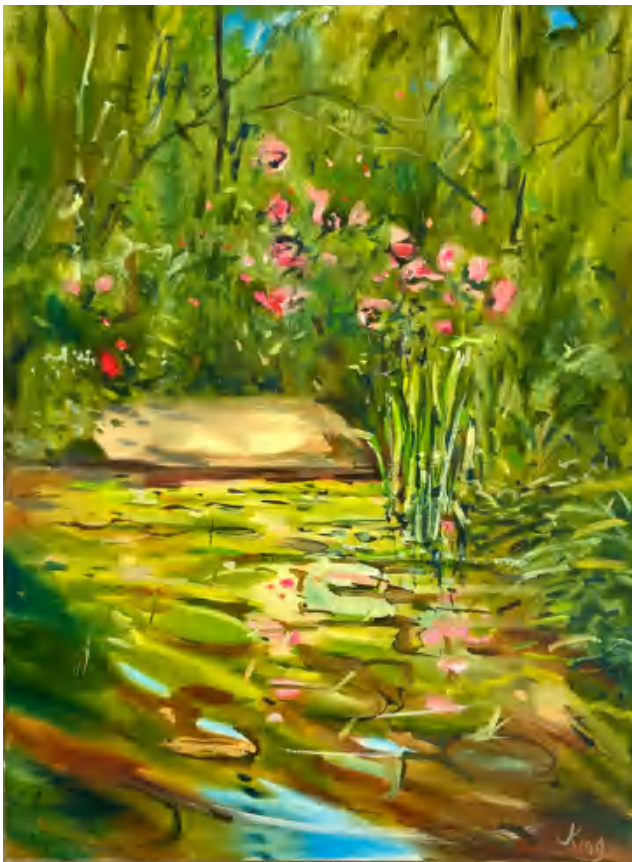
The Atlantic light of my native Cantabrian coast is an inspiration for many of my beach paintings and, latterly, silk screen prints.



John King

John did a fine art sculpture degree at the infamous St. Martins School of Art under the illustrious tutelage of Sir Anthony Caro and Philip King PPRA. He is a contemporary of Sir Richard Long and Gilbert and George. After a brief spell as a studio assistant in a stained glass studio he pursued a career in art and design education alongside his professional art practice. He has exhibited widely in the UK and overseas.

These works were partly inspired by Sir Jacob Epstein who also lived near Epping Forest and whose pleine air paintings of the locality inspired him. John's paintings start on location and are then completed in his nearby studio in Hackney Wick. They are spontaneous, expressive semi-abstract images which capture his excitement. John is also a virtuoso watercolour painter.



Jill Meager

Jill's focus as an artist is on vulnerability, beauty and loss. Raised in rural Scotland, she has always been close to wildlife and wilderness and wants to show the natural world in all its finery, its poignancy and its breathtaking brilliance. Through her portraits, she demonstrate what is at stake if we lose all this through careless human activity.



Jill works across all media and the most important aspect of her drawing is to place a single portrait on the surface, no background, no distraction, just the close-up image looking you in the eye.

Jill shows her work with BobCat Gallery, with The Ashburn Gallery in Devon and with The Darryl Nantais Gallery in Cambridgeshire and in Stirling. She is also a member of ArtCan.



Jill has been shortlisted for the Royal Academy Summer Exhibition, for the V&A Inspired By exhibition, has illustrated a Michael Morpurgo Short Story, and she designs Christmas Cards for two charities; Farms for City Children and InterAct Stroke Support.



Judith North

I am a painter working mainly in oil, making abstract paintings... drawing on memories from my subconscious rather than directly representing physical objects or scenes. I paint intuitively & use the painting process itself to bring forth my ideas, inviting the viewer to engage with the work through imagination.



My paintings act as windows through to illusory 'mindscape'. There are hints of arranged objects or landscapes whose elements overlap to create spaces where colour, form & line act both independently & in harmony to construct places that invite the viewer to navigate, but remain intangible and irrational.



My paintings are created using thin layers of paint, overpainting & obliterating as I work, resulting in a visible history within each piece. In my process, I draw a parallel between the process of creating & of thought that we use when we strive to recall our own memories. Just as the history of my paintings can be seen, our own memories are shaped by the layers of experiences that build over time.

Born in Bristol, I now live and work in London. I studied Fine Art at the Sir John Cass School of Art, London Metropolitan University having originally studied Mathematics & Art History at London University. I was a co-founder & director of One Paved Court, an artist run space in SW London, 2017 - 2020.



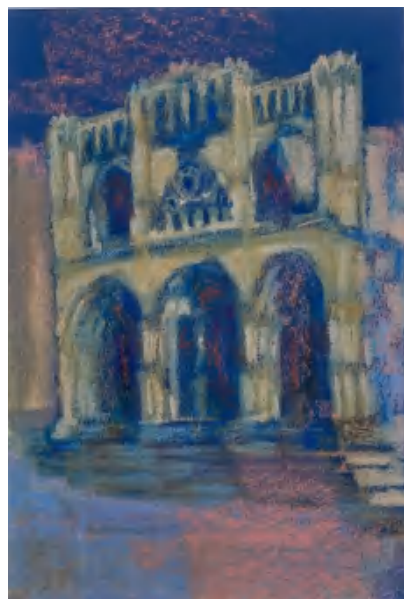
Judy Century

Judy creates vibrant, contemporary paintings inspired by the natural world. She enjoys capturing the essence of flowers or landscapes, stylising them, and making them her own with expressive marks and patterns. Judy plays with bold backgrounds, dramatic marks and scale, to create a contrast with the delicate nature of her subject matters. The results are energetic, colourful, statement pieces which celebrate nature whilst also creating decorative pieces to liven up interior spaces.



Julia Sukhanova

I'm currently completing Fine Art Diploma at PSAD. I have always been interested in drawing and painting but only decided to seriously pursue career in arts during COVID lockdowns. My areas of interest are portrait, lifedrawing, still life and landscapes, so basically everything around me, as long as there's light. I am in pursuit of light in every shape and colour, day and night.



Julie Proctor

My art is a representation of fun.

Art to make you smile.

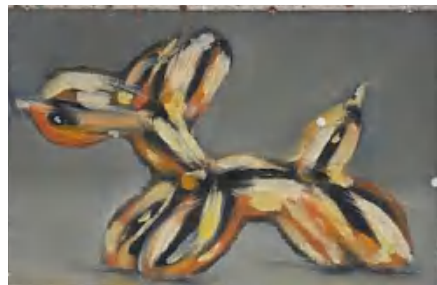
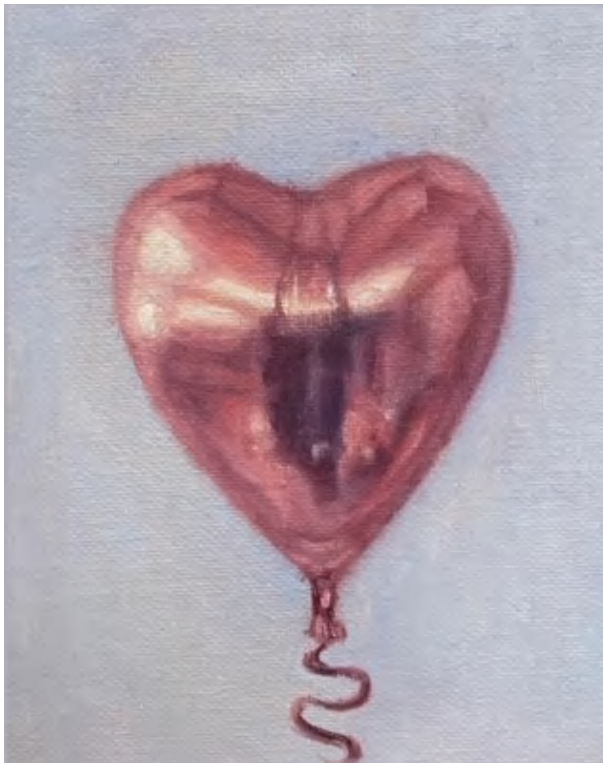
Working in oils and influenced by over 20 years working in the event industry as a makeup artist, body artist, face painter and airbrush tattooist.

I paint treasures from the past that can still bring joy in the present. Objects of play, which have stood the test of time and can trigger thoughts, emotions, situations and sensations.

Self-taught during lockdown, I now paint almost every day.

A Clown Egg Artist, of which, there can only ever be one at one time and I am very honoured to be the one!

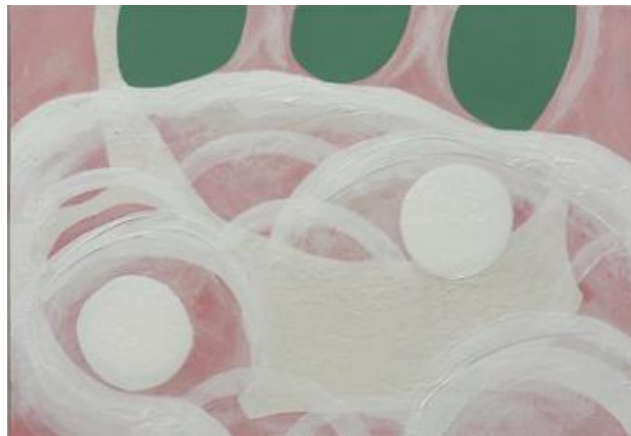
Still painting faces!



Kate Marsden

Kate Marsden's paintings, drawings, prints and textile pieces are the result of years of experimentation alongside her more graphic, illustrative design-based work.

Kate paints everyday items and objects, and is increasingly inspired by thoughts, emotions and childhood, combining figurative and abstract imagery.

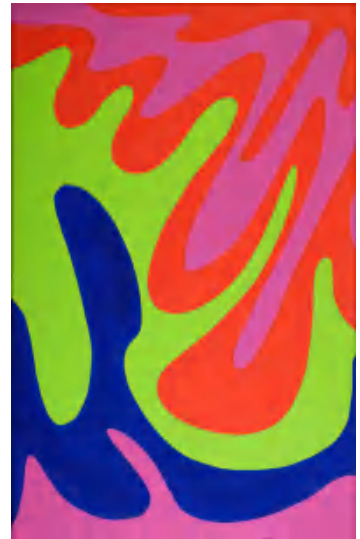


Kika Pierides

I'm an artist from London who uses various art forms to understand and express my experiences.

My work focuses on the creative process itself rather than the final product. I draw inspiration from my surroundings and personal insights, emphasizing themes like intuition, memory, and spontaneity.

I often use unplanned or random techniques to create abstract visual art. This approach helps me interpret the world around me and continue growing as a person.



Kira Phoenix K'inan

Kira's work brings together fine art and craft through works on paper, inimitable glass sculptures, ephemeral installations, and multi-exposure photography. Her love of art and colour began at an early age. She grew up in a vibrant community of artists on Lamma Island and would spend her weekends exploring the island where she developed a close connection to nature. She spent her summers travelling throughout Southeast Asia, America and the UK.

In 2012, Kira took a once in a lifetime trip where she travelled on her own to Hong Kong, Bali, Singapore, and Thailand. During this time, she created a series of watercolour works on paper. Upon returning to the UK, she developed a technique of translating her two-dimensional works on paper into three-dimensional glass sculptures known as the Relief Glass Drawing technique. This labour-intensive, hands-on process allowed Kira to experiment with surface textures by carving into plaster batts and combining different glass colours for a vivid outcome that responds to the natural light by creating shadows that dance on the walls or shift their tone depending on the type of light they sit in.

Today Kira's collections are known for their rich colour palette, dynamic lines that intertwist into one another, and works that are in constant visual flux.



Laura Fishman

Laura earned her BFA in Painting in her native United States from the State University of New York. It was here she studied with abstract expressionist Joop Sanders, friend and apprentice of Willem de Kooning, and the founder of the American Abstract Expressionism group. She also studied with Hudson River Valley artist Alex Martin, where her love of landscape painting was nurtured. The influence of her education can be seen throughout her works, with her use of bold colour and intuitive style.



Laura continued her studies earning an AAS degree in Textile Design at the Fashion Institute of Technology, New York, and earned her MA Fine Art at Middlesex University, London. Laura lives and works in London, is a certified GOLDEN Artist Materials Educator and is Art Curator at Stephens House & Gardens, Finchley.



Since her early devotion to painting, Laura has been motivated by a love of nature and a fascination with paint as a material. She uses colour, texture and movement, balancing intention along with chance to create a dynamic surface. She gravitates toward the abstract in art because it allows her the freedom to interpret the world she sees through her own creative lens.

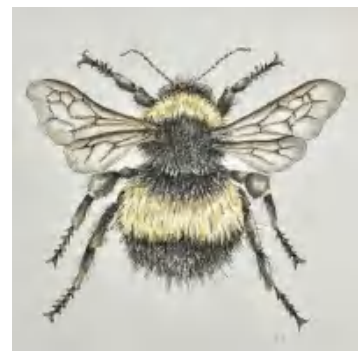


Laura Gompertz

Laura draws inspiration from ordinary things that are often overlooked but have hidden meanings to be unlocked. She encourages viewers to focus attention by showing the subject in a sparse, uncluttered space.

By sharing her vision she leads the viewer to a fresh appreciation of the world, as well as offering an invitation to consider the potential artistic value in things that might otherwise be dismissed.

Painting and drawing have long been Laura's main preoccupation. She originally trained in Theatre Design (BA Hons) at Nottingham Trent University after a childhood obsessed with theatre. Her work has included set and costume designs for Alan Ayckbourn world premieres and productions across the UK. She has also founded an award winning interior design business. Working in three dimensional design has contributed to her feeling for form, space and colour.



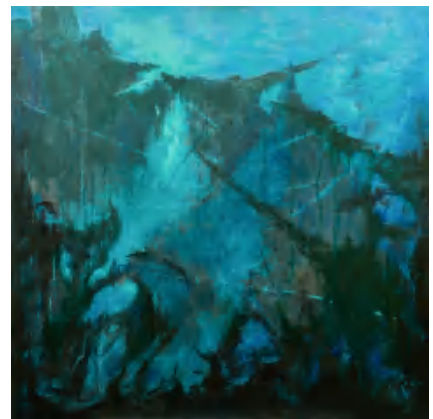
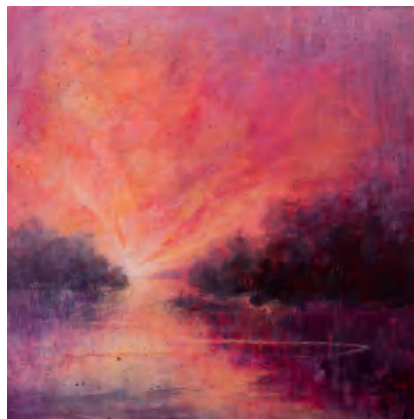
Laura Parker

Laura Parker is a self-taught, London-based artist. Laura is inspired by the natural world - from dramatic underwater views, to expansive landscapes, intimate still lifes and abstract works. She is a member of ArtCan and Richmond Art Society.

Art is a strand of Laura's life that has developed as she has grown older. For many years, art was something she loved and studied, gaining a degree in History of Art & Architecture at 45, but it had never occurred to her to try to create her own work.

At fifty, she began painting the landscape, and colourful still lifes. Then she used her scuba-diving experiences to depict the underwater world, producing images of marine life and of rusting wrecks. The natural world, and in particular water (above it, below it, and reflections in it), are a constant stimulus to her work.

Laura works in acrylics, oils and mixed media. She uses bold, contrasting colours, collage and energetic marks to guide the eye around a canvas. She builds up layers intuitively, to create artworks which feel dynamic and arresting, and where a history is inscribed on the surface itself.



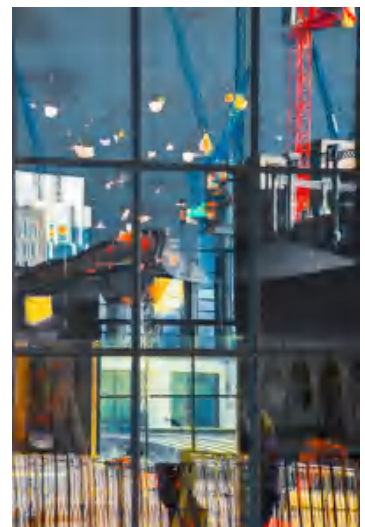
Linda Chapman

After graduating in photography, Linda pursued a photographic career for some years before deciding to leave the commercial world behind and follow her own creative journey.

Out of her photographic ideas, Linda began to think in a more three dimensional way, with a desire to build. This took her back to her childhood, when she would hunt around the house for materials to build with. Making things is about fine detail, which Linda loves, along with miniature things - building miniature things sometimes, other times miniature scenes.

“The idea of creating your own little world fascinates me. I have also never been very good at describing something in words. So the idea of creating my own mini visual 3D version of something I’ve seen or thought of took off!

Originally I liked the idea of memory boxes, and enjoyed the work of Joseph Cornell. Today, however, I’d say that my work is slightly more abstract. Sometimes a scene, sometimes just a statement. Not all of them are in boxes as I really enjoy the challenge of finding something very different to house my work in! The materials I use are mainly hand built by me, sometimes even combining one of my photographic works as a background.”



Liz Whiteman-Smith

Liz is a London based screen printer. She makes prints to make people smile, enjoying seeing the reaction people give when looking at her playful dinosaurs or colourful blue footed boobies.

As a Londoner, she is proud of the history and heritage in plain sight around every corner and the constant evolution and dynamism of the new that mixes, merges and develops this great city every single day. Her series of London screen prints celebrates this juxtaposition of old and new that makes her home city so unique.

An elected member of the Southbank Printmakers Gallery. She has work in the Victoria and Albert museum archives. Her work has been exhibited in the ING Discerning Eye Exhibition and the Royal Academy of Arts Summer Exhibition.



Lucia Hardy

Lucia Hardy is an artist from Harold Wood, painting expressive and dynamic birds, wildlife and wild British landscapes.

Born and raised in London to an eclectic Italian, Irish and Lithuanian family, Lucia is inspired by nature's strength, resilience and the struggle to balance darkness and joy in life.

Painting in textural acrylics, in a contemporary, semi-abstract style, Lucia's work is dynamic, vibrant and full of emotional energy.

Lucia has shown her work with Roy's Art Fair at The Oxo Tower Bargehouse and Truman Brewery, works with the George Farnham Gallery in Suffolk, has and participates in local arts groups including the Brentwood Art Trail and is a member of the Colchester Art Society.

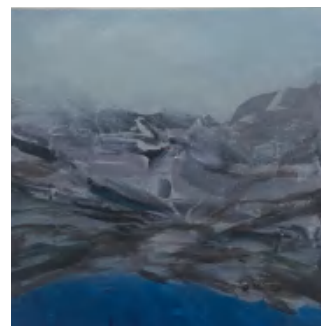
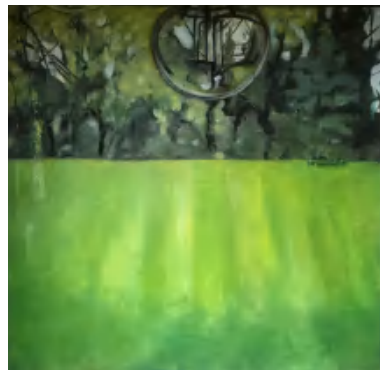


Lucy Gow

I am drawn to the landscape, and enjoy its vastness. I love nothing better than the rolls and folds of the land and a big sky; a response to the family picnics in the Glens of Antrim, and my father's wise words of how the ant has no idea of its place in the world. Similarly, I like to reflect as I stand in a field that I am standing on what has gone before. My work pulls these strands together and presents something that appears superficial, but has these hidden stories.

My practice revolves around the landscape, but not the whole vista, only parts of the view – those appealing bits that offer an opportunity to incorporate imagination and different perspectives I do not, or rarely, set out knowing what the outcome is likely to be, and the direction often changes, especially when working on several pieces at once.

I like to try to capture my response to the landscape, and surroundings, trying to convey that sense of history, layer upon layer. The mark making, or rubbing out, blending and textural marks or spaces create energetic vibrant pieces with personal resonances. The intention, such as it exists, is to allow a sense of freedom, getting lost, and a reminder of how we fit into the narrative. Our small place on the planet.



Lucy Gow

Poland-born artist and art historian Lydia Bauman lives and works in London. Deeply moved by the fragility of the environment, her mixed media paintings harness the beauty and timelessness of the natural world; she believes that her use of unconventional materials such as plaster, resin, beeswax, sand and gold leaf help convey the materiality of nature more effectively than traditional oils or acrylics on canvas.

The resulting works are displayed worldwide and feature in numerous corporate collections. Saatchi and Saatchi, Warner Bros, United Airlines, Deutsche bank, the Dorchester, Gordon Ramsey are among her corporate collectors. Lydia had upwards of 30 solo shows in London and abroad.



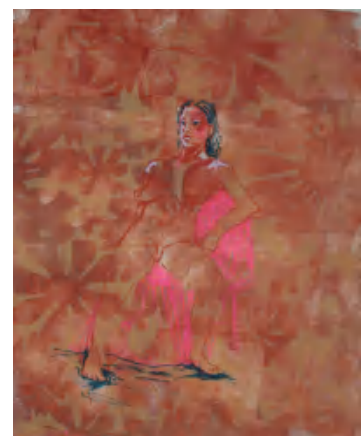
Marie Connery

Marie's work explores spaces, objects, and figuration; the intimacies of her life - the emotional connection to those closest to her. The traces of experience and the residue of what's left behind in memories.

She balances the use architectural spaces, objects, and figuration as a metaphor for comfort and security, memories often shifting between memory or the feeling you may have just woken up from a dream.

Colour is a predominant element in her paintings, prints and drawings. The depiction of light and space is a vital aspect of the work. Intuitive choices of colour, composition and printed elements has the capacity to express emotion. Shadows are created, the figures appear ephemeral, some real and imagined.

Initially using drawing and photography to gather 'moments' in her life to build and inform the work. Illusionary forms are created through thin layers of colour, pattern and texture, rubbing back, revealing and reworking. The play between an unrealisable multi-layered truth.

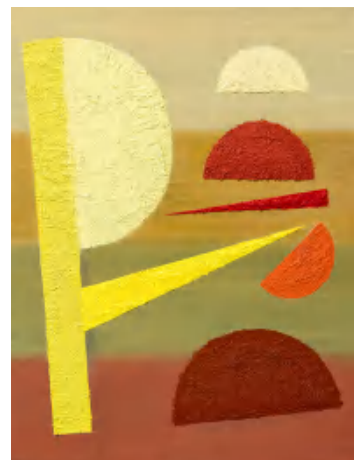
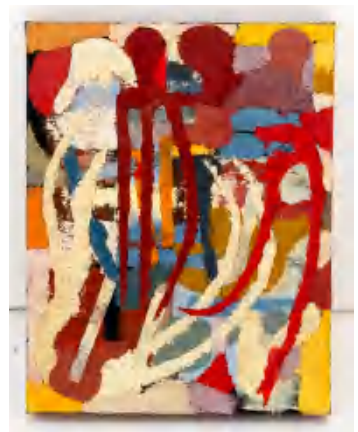


Miguel Sopena

Miguel Sopena is an artist and photographer originally from Valencia, Spain, but now based in Croydon, South London.

Miguel became an artist after completing his doctorate in theoretical Physics at Sussex University in Southern England. He combined writing his thesis with a part-time Foundation programme in Art and Design at Brighton City College, then completed a portraiture diploma at the Heatherley School of Fine Art in London.

Miguel's current practice encompasses abstraction as well as figuration, exploring themes of memory, identity, and the passage of time, and with a focus on composition, colour, and the expressive possibilities of the materials he works with.



Morgane Pairain

Morgane is a contemporary abstract painter based in the UK (Carshalton, South London), where she has lived most of her adult life. She mostly takes her inspiration from her upbringing in France, where she was born, Morocco where she spent her teenage years, and her travels around the world.



Morgane primarily works in acrylic but does also use oils at times. Her process uses her intuition and emotions to let the picture take form, allowing the medium to transform and interact with her.



The final product is the result of what she feels is an intimate relationship between medium and creator, which she uses to bring the viewers along with her on a discovery of feelings and moods, exploring the nature and compatibility of different forms, shapes and colours, and reflecting on life's wonders and struggles.



Natalia Egyed

Art has always been a fundamental part of my existence, beginning with the vibrant world of arts and crafts. As I grew, this creative impulse evolved, and recently, it has found a new home on canvas, expressed through acrylics.

My work is an exploration of the intangible, an endeavour to personify feelings and capture the essence of moods in a quasi-realistic style, where strong colours play just as much part as subtle expressions to convey a specific emotional resonance.

In every piece, I strive to create a dialogue between the seen and the felt, the bold and the delicate.

It is my hope that through my work, viewers can find a piece of their own emotional landscape reflected back at them, sparking a moment of recognition and connection.



Paul Hannon

Paul is a painter and printmaker based in London. Woodcuts and linocuts are his artistic heartland, deriving inspiration from the techniques of Edvard Munch and some German Expressionists.

Instead of printing large blocks of solid colour, Paul takes the reductive techniques of woodcuts and linocuts to the limit, often producing what are fine line drawings, teeming with movement and pace. Many of his images border on abstraction. He keeps his edition sizes quite small, each one typically limited to a run of 25.

His recent oil paintings are dominated by a series of large semi-abstract landscapes. He has exhibited at the Woolwich Contemporary Print Fair, the London Festival of Print, the Horsebridge Gallery in Whitstable, and the Barbican Library in London. Paul is also a member of the Printmakers Council, Barnes Artists and East London Printmakers.

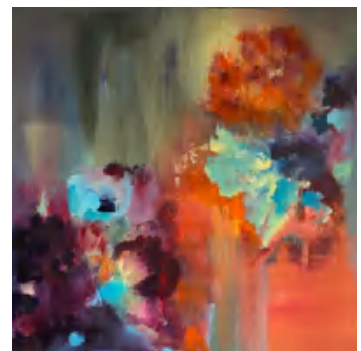


Pauline Maddocks

Hertfordshire based artist Pauline Maddocks gained a BA HONS from St Martin's London in Fashion and Textile design, after which she enjoyed an extensive career in the fashion industry both as a designer and then buyer with an international fashion retail company.

Upon moving to the Chiltern Hills she has rekindled her love of painting and now paints the natural world in an abstract manner.

She has exhibited and sold at several contemporary art fairs as well as galleries in London and the Home Counties. These include The Broadway Gallery Letchworth, The Boomer Gallery and The Brick Lane Gallery in London and local open studios. She currently has a selection of her work on permanent exhibition with The Little Van Gogh Company.



Rebecca Shillingford

I've been using crystal energy in my daily life since I was a teenager, using the energy to clear and cleanse my space. I started putting small crystals into pieces of art, helping me to cleanse space whilst having something beautiful to look at.

Overall I aim to create something for your space that is both soothing and invigorating, fostering a positive and rejuvenating energy for you and your home to enjoy.



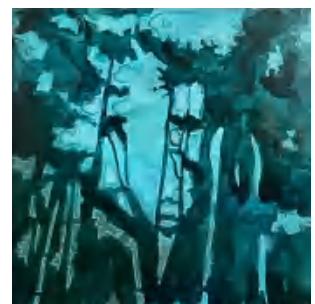
Rebecca Tucker

Rebecca is a Lancashire born/London based painter, with a BA in Fine Art from Reading University 1996. She is an active member of ArtCan.

Her paintings are the result of a visual 'discussion' between abstract and more representational methods of depicting subjects. Rebecca is keen to play with the viewers perception of subject and space in her paintings and then pull that preconceived idea back to the appreciation of what are essentially abstract marks on a two dimensional surface.

Abstraction has been a fundamental part of Rebecca's practice since her Fine Art Degree. Using landscape and the natural world as a starting point, the subject then fully or partially gives way to the pure joy of paint, drawn lines and marks on a surface. And once a painting is complete there then begins a collaborative interaction with the viewer, allowing them the freedom to bring their own experiences, emotions and memories to their reading of the work. She works towards abandoning the sense that abstraction and figuration are mutually exclusive. The paintings can depict a notionally 'real' space, whilst also functioning, on closer inspection, as autonomous, non-referential, abstract and emotional objects.

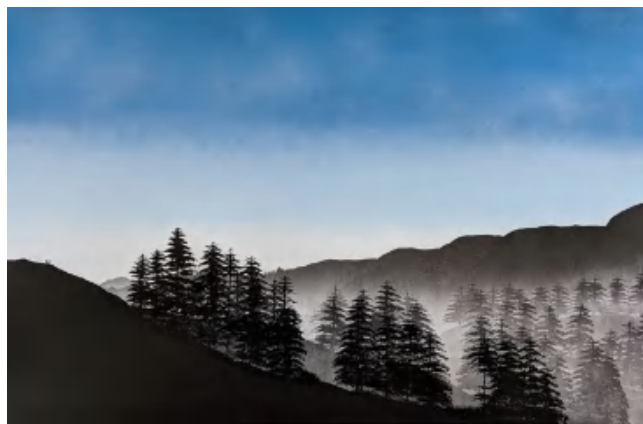
Working primarily with water-based materials allows the use of water itself as part of the process, painting layers and then fully or partially washing them away, taking advantage of the 'happy accidents' that occur, bringing an element of experimentation into every painting. She enjoys the use of adding a graphic line to create silhouettes, redacting negative space, playing with foreground/background, or focusing so closely on something that it becomes essentially abstract.



Robert Owen Bloomfield

Robert's art combines ideas of his two favourite artists (Rothko and Gormley) by placing figures in stark and sometimes harsh landscapes with unyielding horizons. His favourite material is spray paint: "I often used spray paint as a teen when out creating guerrilla art with friends in London. The idea of using street material in a more traditional way appeals to me."

Robert prefers working with the cool tones of grey and black as it leaves more to the viewer's imagination. The art he creates comes from endless introspection, and a variety of inspiration. His work is thoughtful, and presented in an accessible way for a wide audience. In his own words: "Everyone should have an original painting in their home."



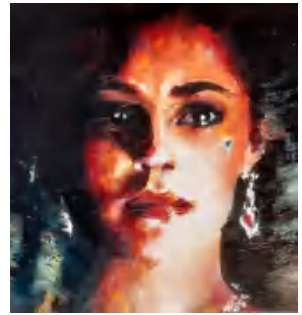
Robyn Forbes

I am a London based artist, specialising mainly in screen printing. I studied at Wimbledon and Chelsea School of Art in the 1990s and more recently discovered screen printing at Putney School of Art. I produce art inspired by my favourite places, attempting to capture the mood and feel of a place through my work.



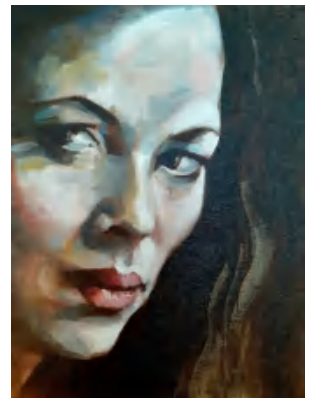
Sal Jones

Sal is a contemporary figurative painter working in oils. Her paintings are about the human condition, our weaknesses and strengths, our emotional turmoil and contradictions; portrayed through the depiction of fictional subjects influenced by film and popular culture. Narratives are not necessarily explicit, inviting the viewer to invent and connect with the subjects.



Sal has a BA Hons in Fine Art and a PGCE in Art & Design. She is a freelance Artist, Museum educator and exam board Assessment Associate. Sal has exhibited widely in London and the UK, in selected and solo shows. Works are held in private collections in the UK and internationally.

“My oil paintings are figurative, expressive and take the form of portraiture, although I consider them a different take on the genre. I use photographic source imagery as starting points for paintings, collecting and manipulating and finally selecting those that resonate with me on some level. I use the paint to draw directly on the canvas then build up layers from washes to more gestural mark making, often combining brushwork with palette knife. I invent colour palettes and marks that are emotive to the subject, experimenting with textures and techniques and using different tools to apply the paint.



I work on both large and small scales; the size and surface I am working on also dictate the processes used; it is an intuitive approach, both fascinating and challenging in equal amounts. I find painting a visual way to comment on contemporary life. The sources I select reference the cross-over between the fictional and the real in a society where the two appear to have become ever-more confused.”



Sarah Levin

Sarah Levin is a London based artist working in fluid acrylics, creating fantasy botanicals and flowerscapes.

Her work involves layering fluid paint and allowing the surface tension to help in the creation of organic shapes. Using non-traditional tools such as skewers and ball chains, her distinctive stripey grasses and flowers are formed on the canvas.

Levin enjoys painting in her garden studio and is happiest when creating her colourful fantasy gardens.



Sarah Simons-Gooding

Most of my work is based around pattern and order to try and make sense of the muddle that is often real life. The little individual pieces are an ongoing art diary reflecting memories, feelings and observations, drawn from a state of mind rather than a specific location or reality. I then collate the individual squares together to create something which is hopefully more than the sum of its parts and a bigger story is revealed.

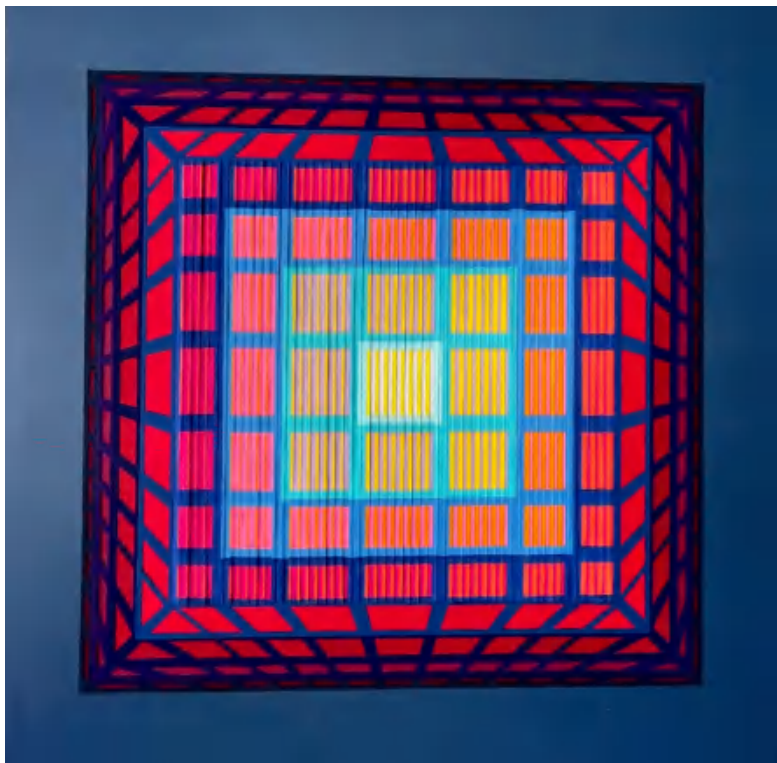
My background was in graphic design in which I achieved a 1st class degree and worked for many years within this field. I started working as an artist after having children and it has taken me into a new and exciting direction which I am thoroughly enjoying.



Sena Shah

Sena works with felt fabric to create a mix of geometric and abstract ideas blended by colour to give optical/kinetic/ lenticular art.

His work is influenced by forms and structure found in nature and architecture. He has sold out at the Affordable Art fairs and The Other Art Fair.



Simon Bailey

I'm Simon Bailey, born & still living in South London. After completing my A-Levels in Art, Design, & Graphical Communication, I took a 20-year break. However, my passion for art reignited after a suggestion from a neurologist to take up painting as a way to help me relax to try to alleviate the pain from daily migraines.

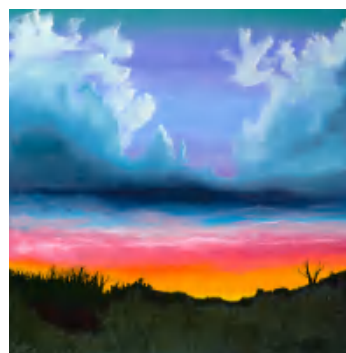
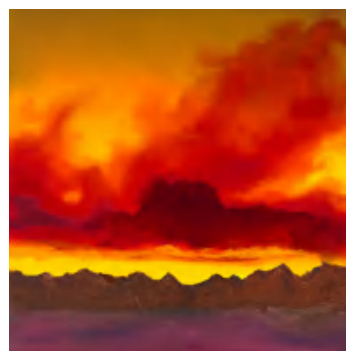
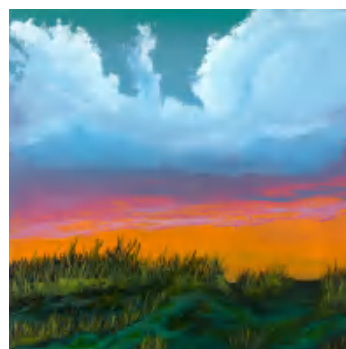
I now I find myself painting daily, using oils & focusing primarily on landscapes involving trees & clouds. Fellow artists have dubbed me as the 'Cloud Man', which makes me laugh but is spot on. If I could paint a different cloud every day, I'd be very happy.

What always fascinates me when painting a new piece, is the way some people can see something completely different from what I had intended. I love hearing people's reactions and the insights they share, as it adds a layer of depth and wonder to my work.

I have dyslexia, which I actually consider an advantage in my art, as it helps me think outside the box. I will take a photo as a point of reference but my work naturally evolves in an intuitive way.

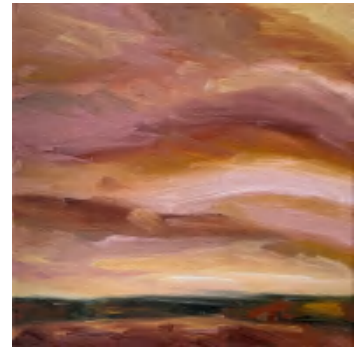
I was thrilled to be shortlisted for the RA Summer Exhibition in 2022. I have also taken part in group art shows and art fairs in and around London, Sussex and Kent.

The journey of rediscovering my artistic passion has been really life changing, I am so grateful and feel very lucky to be able to paint every day.



Suzanne Winn

I am a landscape artist living in rural Hampshire. My work is driven by the incredible feeling of energy & freedom I experience when I am within the landscape. Connection with nature is vital to my wellbeing. I am never happier than when I am in a wild place, soaking up the feeling of plugging into nature's abundant energy & life force.



Skies are where I love to lose myself - they are ever-changing & they endlessly fill me with wonder & joy. Nature can soothe, uplift, calm & energise me. Connection with nature feeds & restores my soul.

I draw out in the fields using charcoals & pastels. I work quickly, aiming to capture the feeling of the moment. I draw for the joy of it & to stay attuned to the ever-changing landscape. Back in the studio, I typically paint expressively with oils, using bold brushstrokes & dynamic marks. Recently, I have also been experimenting with watercolours. My aim is to capture how it felt to be in these moments of connection with the landscape around me.



In this time of climate crisis, I believe that reconnection with nature is vital. I believe strongly in the power of nature to heal & restore us physically & mentally, and in the importance of establishing harmony & equilibrium between us and our natural world. I hope my work may inspire others to connect with nature - to notice it's beauty & feel it's power. Ultimately, I hope my work can help us to see, appreciate, value & protect our wild places, so we can preserve them for our own wellbeing, & for future generations.

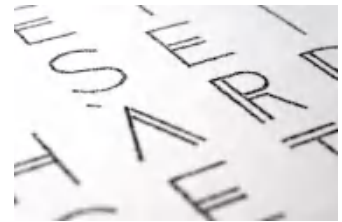


Taya De La Cruz

Taya De La Cruz uses detailed, minuscule handwriting as a way of methodically distilling chaos into order. She invites the viewer to move closer to the work and further explore the narrative behind it. The concept of the written word is expanded and redefined by its intention, which is not necessarily legibility, but being seen as a whole.



Taya's work is thematically centered around the human brain, and how we respond to life's challenging events. She is particularly inspired by the psychology of overcoming hardship, and elite performance. She focuses on finding light in the dark; difficult circumstances are made approachable and even beautiful. Her art encourages introspection, with the intention of large scale change, starting with each individual.



Taya's artistic approach serves as an antidote to the modern expectations of pace, achievement and results. Each labour intensive piece visually articulates the considerable amount of time taken to create it, and reinforces the message of slowing down and being present.

Taya recently created a new technique of painting, using medical-grade syringes and needles, which allow her to work with paint on a microscopic level.

Taya is a half-Spanish, half-Indian Londoner who was raised in sleepy southern Spain and educated in Gibraltar. She trained as an actress, and found her way into visual art organically.



Tracey Davidson

My current work is heavily influenced by my recent travels in India. I am particularly inspired by the sacred cows and the vibrant colours, shapes and textures of the beautiful flowers, especially the endangered orchids of India. I have been exploring the combination of painting with embroidered detailing to add texture and depth.

