

Original, affordable artwork from fantastic contemporary artists. Regular events in store!
Free consultations, worldwide delivery.

**Upstairs at Putney Exchange Shopping
Centre, SW15 1TW**

www.BobCatGallery.co.uk



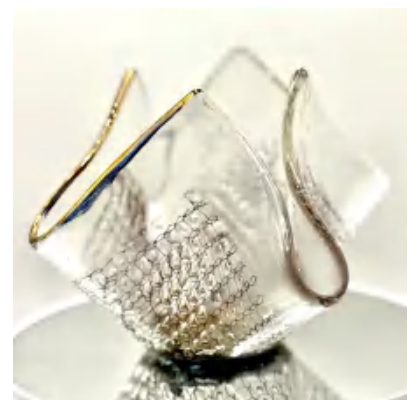
Agata Henderson

As both a garden designer and glass artist, my practice is inspired by the forms and patterns of the natural world. I work across fused glass, stained glass, and mosaic, each medium offering a different way to explore the interplay between structure, light, and organic form.

I am particularly drawn to the unexpected nature of glass fusing, where each kiln firing brings unplanned but welcome transformations, echoing the spontaneity of nature. My stained glass pieces are created using the traditional lead came technique, but with a contemporary sensibility. Many take the form of freestanding works that depict landscapes and plant life, allowing the subject to exist in space much like a living organism.

Light is central to my work. Glass only reveals its full character when illuminated, shifting in mood and intensity as conditions change. Through this dynamic relationship with light, my pieces invite viewers to experience familiar natural elements in new and surprising ways.

I often incorporate reclaimed materials into my work, giving new life to objects with history and character. The stands for my figurative pieces are crafted from reclaimed oak, while my mosaics frequently feature leftover fragments from my stained glass practice, selected for their distinctive textures. I also use unique pieces of broken Vietnamese pottery, which add depth, colour, and unexpected dimension to my work.



Anarkali Checkrahamatoula

Anarkali is a French born London based artist, working in oil, pastel or ink pen. She has recently started working with different printing techniques, incorporating inks or paints to the prints.

Much of her work has a cross cultural narrative based on her extensive travels and her familial links to India. Sketchbooks and travel diaries are an integral part of her art process.



Annabelle Volpi

I am a self-taught French emerging artist who has recently embarked on an inspiring journey of creativity, healing and spirituality after dedicating 26 years to the corporate world. Drawn to vibrant colours, movement, and self-expression, I use my intuition to guide my artistic process, with music as my muse to enter a state of creative flow.

Last year, I graduated as a holistic creative art therapies practitioner, integrating my passion for painting as a therapeutic medium to express my inner self. Through my work, I aim to infuse joy and vitality into my creations, fostering a sense of freedom and exploration in my art.

My work has recently been exhibited in venues in London, as well as in Venice at the palazzo D'abruzzo. One of my paintings has been featured in the "Boomer" art gallery brochure.



Anne Sweet

Anne is a mixed media artist based in London, who loves to experiment with different styles and mediums, giving her a broad portfolio including pastels, acrylics, ink and printing techniques.

Anne creates abstract works, portraits, still lifes and various mixed media pieces on canvas. Anne is a very versatile artist not afraid to try new and different things.

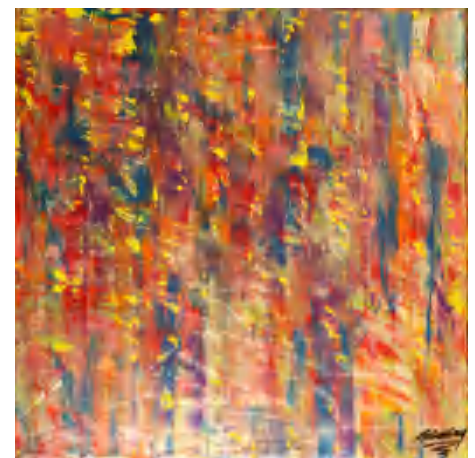
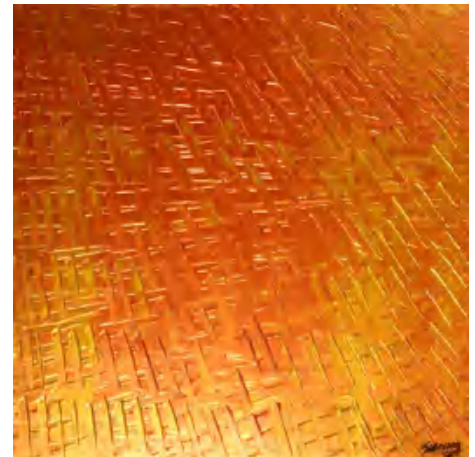
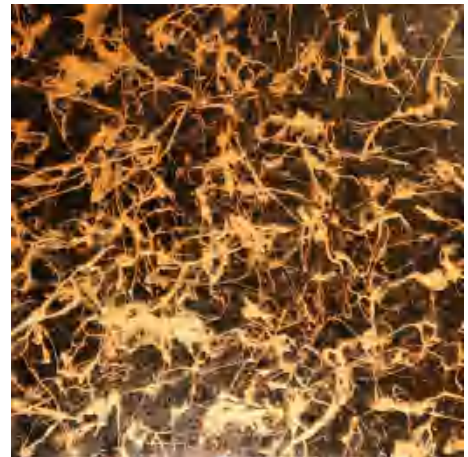
Anne has exhibited at Battersea Arts Centre and at Rosie Q's Art Cafe in Wimbledon, as well as regularly showing with BobCat Gallery, and has painted numerous commissions.



Art Siberian

Art Siberian is a contemporary abstract painter whose work explores the balance between chaos and calm. Born in Siberia and now based in the UK, he draws inspiration from the vast northern landscapes and the rhythm of urban life in Europe. His paintings combine expressive movement with layered texture, inviting viewers to feel rather than analyze.

Influenced by artists like Jackson Pollock and Gerhard Richter, Art focuses on emotion, depth, and spontaneity – creating pieces that feel alive and personal. Like Pollock, he rarely names his paintings, allowing art lovers to decide what they wish to call them, depending on what they see. Each person discovers something different in his work – a reflection of their own mood, memory, or imagination.



Carole Bury

Carole Bury designs and crafts paper textiles, using embroidery and constructional techniques. Working in landscapes, she is presented with rhythms, pathways and marks, which invade the work slowly and unobtrusively. Walking through fields and woods in the Cotswolds where she lives, guarantees geological treasures, fossils and rich landscapes. Folded and pleated intimate pieces contain hidden marks and stories of journeys and walks; offering meditation, stillness, and the potential for quiet contemplation.



Bewick Swans make their hazardous migratory journeys every winter, from Siberia to the south-west of England. Carole drew and researched the Bewicks in the field, and these studies developed into a series of intricate Paper Feather works, intended to be spiritual, meditative, providing rest, security and a safe focus for anchoring thoughts. Carole's processes use drawing, folding, stitching and gilding and refer directly to the rich history of embroidery.



Carole is a member of IAPMA, the International association of paper makers and artists. And exhibits in the UK and Europe with them and the ArtCan Organisation. As a Fellow of the Royal Society of Arts, Carole has exhibited, spoken and demonstrated at the RSA in central London. In 2025 her work was represented at the RWA in Bristol and ING Discerning Eye. Carole studied at Cheltenham College of Art and Fine Art Embroidery at Manchester Polytechnic.



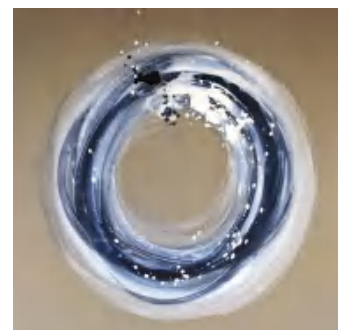
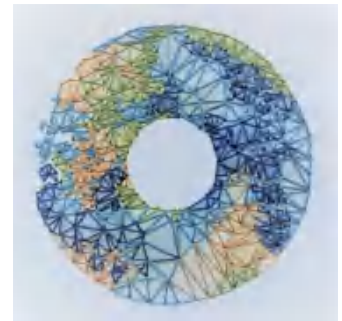
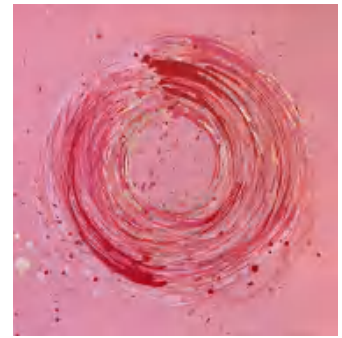
Caroline Banks

Caroline Banks is an Anglo-French artist now based at Collage Arts in Wood Green, London. Graduating in Mixed Media Textiles, her career has included art and design including fashion and interiors. In 2001 she moved to India, remaining in Asia till the end of 2007 when she returned to the UK. After a long break from exhibiting, she began showing her work once more in 2014 and is now fully focused on her art career.

She works with galleries and art consultancies as well as exhibiting at art fairs including The Other Art Fair both in the UK and the USA and the Affordable Art Fair in London. Much of her work is commissioned by both private individuals and corporations including the Berkeley Group. Caroline publishes a weekly blog through her website and is a member of the ArtCan advisory committee.

The energy and memory of gesture, the sense of something vitally important yet forever intangible, the transference of energy from one form to another in a cycle of death and rebirth, these are all elements of Banks' research and exploration. Her work, while abstract, is firmly grounded in observational drawing, the starting point for all subsequent markmaking. Influences are many and various, including archaeology, the Tao, Transcendental Meditation, quantum mechanics, astronomy and performance.

The chosen materials of gesso, ink and sometimes metal gilding, hold elemental and personal associations, adding another layer to her expressive and gestural mark-making. The calligraphic qualities of brush with ink result in paintings which, whilst full of movement, are also contemplative and timeless, meriting slow and repeated viewing.

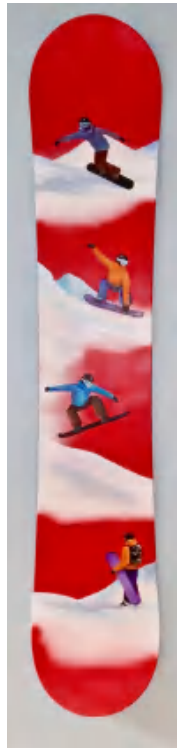
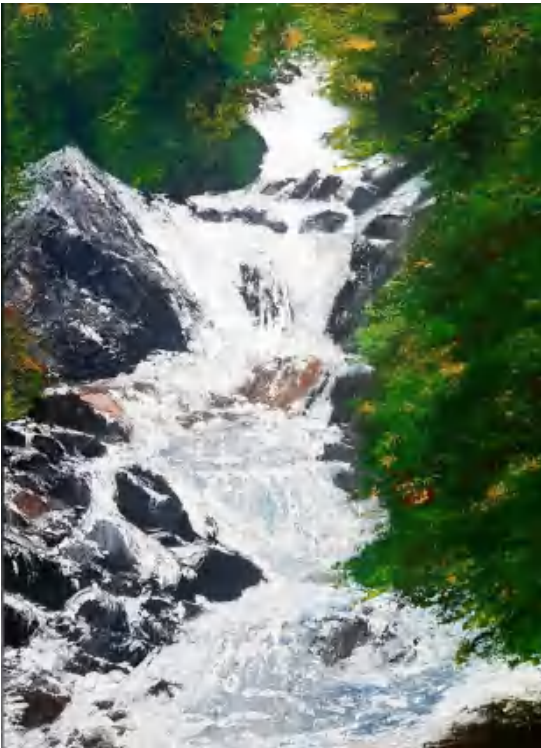


Caroline Wheaton

Caroline Wheaton is a self-taught, British artist and sculptor based in London and Chamonix. She paints mainly in acrylic and ink. She sculpts using stone, cast metals, plaster-based materials and resins.

Her painting practice reflects the mountain environment in which she lives. Landscapes and mountain sport dominate her work as she captures the physicality of her surrounds and the people who enjoy this extreme terrain.

This physicality and her fascination with anatomy and physiology is explored more deeply in her sculpture, which centres on all things human. How we are put together, what makes us tick, how we adapt to our wider environment, how we portray ourselves... past and present. Caroline has exhibited widely in the UK and France and in group shows elsewhere in Europe and the US.



Catherine Sweet

A self-taught artist living and working in London, I primarily use acrylic, oils and found materials on canvas. I favour bright colours and plenty of texture, finding most of my inspiration in the natural world and in my favourite music. My latest series of abstracts explore our cultural relationships with colour and emotion.

My practice has adapted in recent years due to deteriorating motor function - I have Hypermobile Ehlers-Danlos Syndrome, so difficulty gripping paint brushes has led to more experimentation with palette knives, stencils and spray paints, plus air-drying clay, collage and stitching.



Christopher Sweet

Christopher is an urban, landscape and wildlife photographer. From a young age, Chris has been interested in photography as a way to express himself, and to capture the moments that most people miss, or take for granted.

Chris has no formal training in photography, but has a deep-seated love of being behind the lens. He enjoys experimenting with different disciplines, and has developed a diverse set of skills that lend themselves to urban, landscape and wildlife photography.

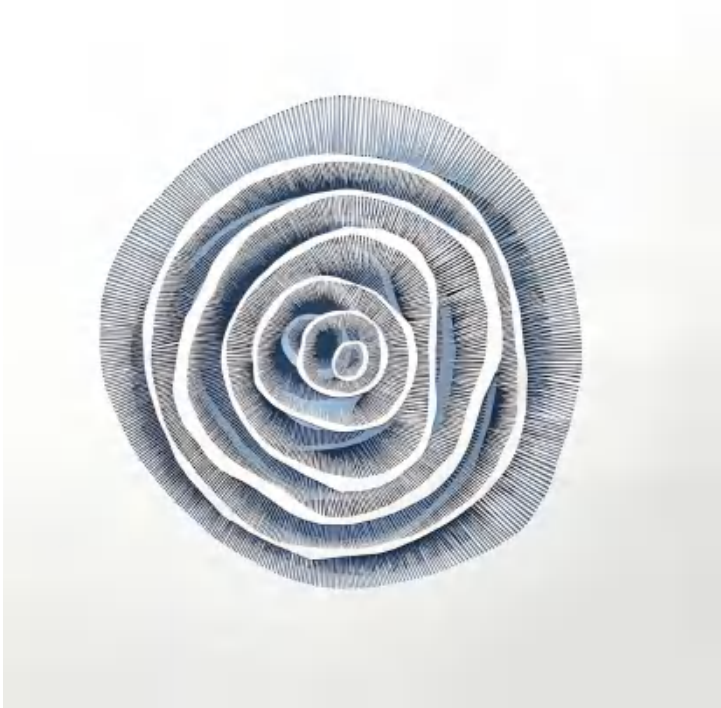
Chris has lived in a variety of small towns and villages around the south east and west of England, and grew up with nature on his doorstep. A move to London in 2001 allowed him to embrace the hustle and bustle of urban life and delve into the world of street and urban photography, however he still loves immersing himself in the natural world.



Clare Pentlow

Clare creates her artwork through the exploration of paper, constantly refining and looking for perfection whilst embracing the versatile qualities of strength and fragility. Through precision hand cutting and folding, her pieces evolve over time through methodical repetitive motions - building layer upon layer resulting in highly textured mesmerising pieces of art inspired by patterns in nature.

Clare's work has been exhibited across the UK, winning several awards, and she also runs paper art workshops introducing participants to different ways of working with paper. She thrives working with people challenging them creatively, helping them on a journey exploring the potential of themselves and the materials.



Deborah Buxton

As a ceramic artist, I work with the form of the shoe - an object deeply entwined with femininity, power, and performance - to confront and reimagine the ways women's bodies and identities are shaped by societal expectations. My work challenges misogyny and objectification, but also embraces the complex, layered joy of being a woman in today's world.

Much of my perspective has been shaped by my career in a male-dominated environment. Navigating those spaces, I became hyper-aware of how femininity is perceived, contained, or dismissed - often reduced to appearance, novelty, or threat. These experiences have fuelled my desire to question power structures through clay, a material that, like many women, is often underestimated for its strength and endurance.

In my ceramic shoes, I exaggerate proportions, rupture surfaces, and create forms that are both alluring and unsettling. These are shoes no one could wear comfortably - deliberately so. They speak to the burdens and contradictions placed on women: to be desirable but not assertive, graceful yet unyielding, visible but silent. The ceramic medium - with its fragile appearance and fired durability - captures that tension perfectly.

At the same time, my work is grounded in play, curiosity, and a deep appreciation for the absurdities of gender performance. I find joy in being a woman in this complex, contradictory society - especially when I can bend, break, and reshape the narratives that have long defined us. Humour, defiance, and beauty live side-by-side in my sculptures.

These ceramic shoes are not accessories; they are acts of resistance, celebration, and reflection. They are reminders that femininity is not a weakness to be corrected but a force to be reckoned with - powerful, complicated, and absolutely worth honouring.

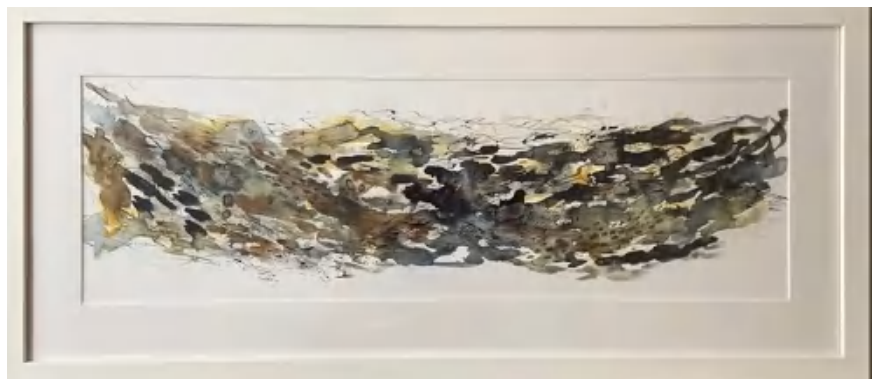


Debbie Tearle

Debbie is a painter living in Surrey, UK. She creates abstract and semi abstract artworks using watercolour and acrylic inks or oils and cold wax medium. Her experience of experimentation with a variety of techniques enables her to be flexible and select the appropriate medium and tools for expressing a specific vision or idea. Within her range of work, she enjoys developing textural layers and exciting marks within her pieces, but also enjoys creating fluid, ethereal images.

The landscape is a constant source of inspiration. Her work is an expression of experiences and observations, the relationship between nature and the individual. Debbie often uses materials gathered on her walks in the landscape which she uses in the process of creating an artwork. Recently she has begun exploring ways to incorporate natural inks and earth pigments into her work.

Debbie has exhibited in Surrey and in London in group shows, art fairs and galleries. She is a member of ArtCan. She regularly curates the 'In My Mind's Eye' exhibition at West Horsley Place.



Despina Symeou

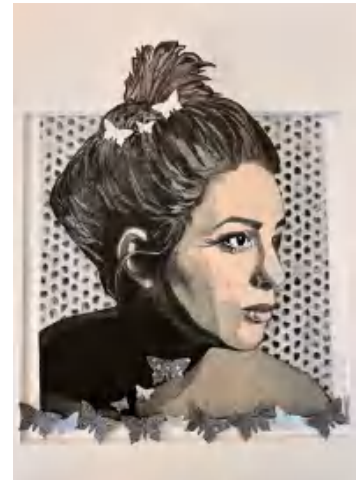
Despina is a painter and printmaker who lives and works in London. After the study of art forms focusing on fine art, printmaking and photography, Despina specialized in Jewellery Design, gaining a B.A.Hons Degree from Middlesex University. In recent years she has returned to the two dimensional formats that had originally fired her imagination, predominantly in etching.

The human form has been her preferred starting point for most of her projects, and an eye for the interesting and sometimes unexpected elements add to the narrative as the work progresses.

Despina began showing her figurative work in 2010 with her solo show Skin Shapes. Since then she has exhibited her work in and around London with the Printmakers Council, biannually shows work at The Affordable Art Fair (UK), and as a member of ArtCan, she collaborates with international artist groups which enables her work to reach a wider audience.

In 2018 Despina was shortlisted artist for The Royal Academy Summer Exhibition. Many of her paintings and prints are in private collections worldwide and her etchings are held in the Victoria & Albert Collection Fund and the Scarborough Museum Trust.

Despina was the 2020 Prizewinner for Island2Island at the Velorose Gallery, Barbican, London.



Diana Burch

Diana explore the fragility of the earth and of the individual through drawing and painting which informs developments into sculpture and installation. Physical locations are ever-changing environments, a metaphor for cause and effect in emotional landscapes.

Influenced by personally significant places where memory plays a significant part, views are altered by a glimpse of light or a fleeting shadow. Conditions shape cloud formations and cause water to form trickles or torrents – or to disappear.

Diana is inspired by the idea that, no matter how ancient the land, it is constantly being renewed by the layering of seasons and human interactions. Often her process is a negotiation between herself and the materials. She uses traditional methods to make drawings and paintings as well as using found objects from the site to apply ink or paint, layering light, form and movement.

Diana's work represents times of stillness in places that are special to her, spent in that active but restful state of observing and responding to the moment.



Di Phelps-Lister

In our increasingly complex and busy world, Di's work tries to give the viewer time and space to reconnect with the world around us. Her work is an instinctive reflection of the landscape in various parts of the country and are personal responses to, and memories of, places she has visited.



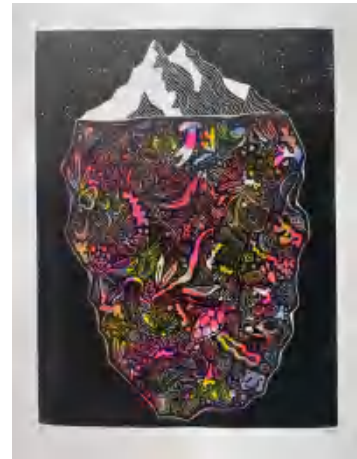
Elizabeth Hall

Elizabeth Hall is a London-based printmaker whose work draws inspiration from the beauty of nature. With a focus on marine life, botanicals, and organic forms, Liz brings her subjects to life in a playful and colourful style.

Through the medium of printmaking, she aims to convey the magic and wonder of nature. Liz's work serves as both a celebration of nature's wonders and a reminder of its vulnerability. Her intricate designs invite viewers to reconnect with the natural world, encouraging a sense of awe and appreciation for the delicate beauty that often goes unnoticed. Liz hopes to inspire others to reflect on the impact we have on the planet and to foster a deeper respect for its preservation.

With a background in digital design, Liz has rediscovered her love for fine art by immersing herself in the traditional craft of linocut printing. This approach, which contrasts with the precision of her digital work, allows her to embrace the unique imperfections that emerge during the printing process. Liz appreciates the unpredictable nature of printmaking, where each print reveals holds the potential for happy accidents that add character to her work— something that's often missing from the digital world she spends her days in.

A member of the London print collective Pressing Plates and North London's Running Jump studio, Liz has recently exhibited at the Cave Gallery in London, Water Street Gallery, and the Fox Yard Studio in Suffolk.



Isabel Pearce

Isabel is an abstract contemporary artist, working with acrylics.

She has studied at the Art Academy in London and West Dean College of art. She uses a variety of techniques to create vibrant landscapes and vivid floral interpretations. Her unique approach to the surface of the canvas produces truly uplifting artworks.

She has been commissioned by Cambridge University to produce a series of nine paintings. These are displayed in the biomedical campus. Her work is displayed in private collections and offices in central London. Two works are currently on loan to Newnham College, Cambridge.



Jaco Nel

I am a London based artist with a background in Horticulture, Garden Design and Landscape Architecture.

I create work in various mediums including graphite, watercolour, screen printing and etching. I have in the past also created and exhibited various works in ceramics (stoneware and porcelain).

I have a lifelong interest in plants, gardens and the public realm. I also teach Botanical Art and Garden Design at a local art school.



Jane Schofield

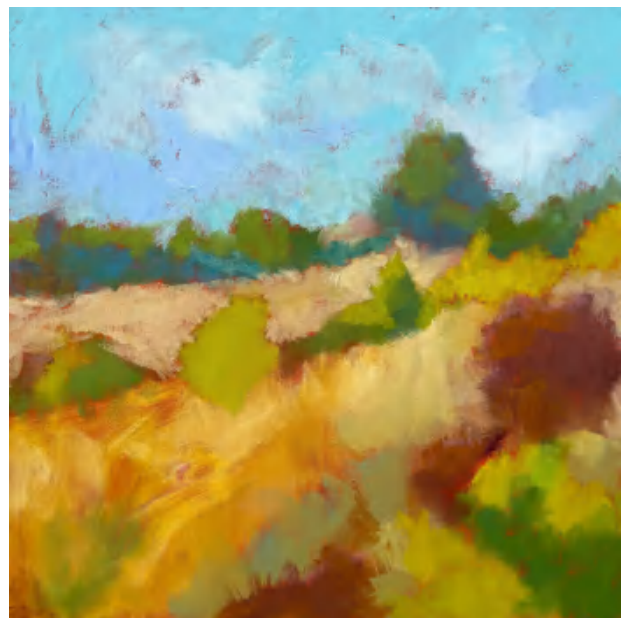
Jane Schofield is an artist who loves to experiment. She incorporates texture, metal leaf and spray effects into her work. She has collected over a thousand reference photos of trees in all shapes and sizes - they are the inspiration for her tree paintings and work on maps. Multiple layers are used to create depth and she loves interesting colour combinations.



Jane Schofield

Jessica Dunn was born in London in 1963. Daughter of actress Priscilla Morgan and comedy actor Clive Dunn. She grew up in an artistic environment and was inspired from an early age by her father who was a keen amateur portrait artist.

After her art foundation at Kingston Polytechnic, she continued drawing, painting and printmaking, before moving to Portugal to work for a design company. She has remained in the Algarve, painting in her studio and exhibiting in group and solo shows throughout Portugal, the UK and Italy.



Jill Meager

Jill's focus as an artist is on vulnerability, beauty and loss. Raised in rural Scotland, she has always been close to wildlife and wilderness and wants to show the natural world in all its finery, its poignancy and its breathtaking brilliance. Through her portraits, she demonstrate what is at stake if we lose all this through careless human activity.

Jill works across all media and the most important aspect of her drawing is to place a single portrait on the surface, no background, no distraction, just the close-up image looking you in the eye.

Jill shows her work with BobCat Gallery, The Ashburn Gallery in Devon and with The Darryl Nantais Gallery in Cambridgeshire and in Stirling. She is also a member of ArtCan.

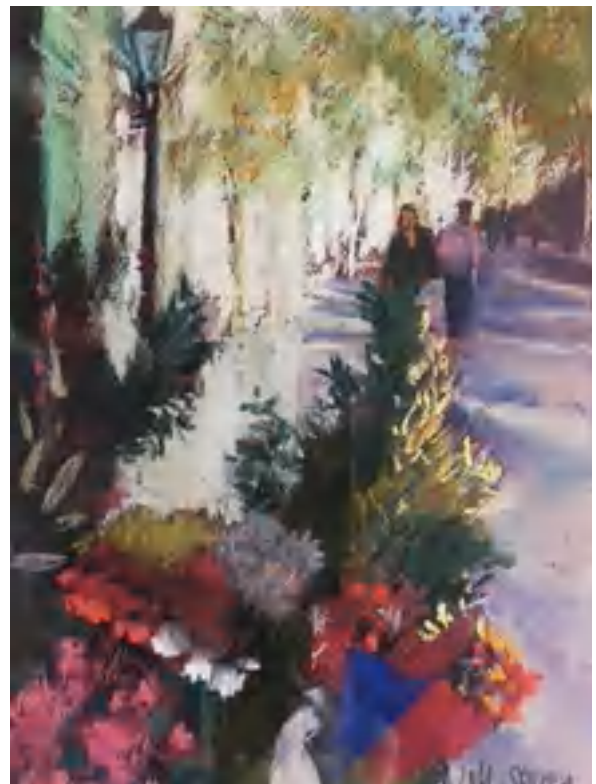
Jill has been shortlisted for the Royal Academy Summer Exhibition, for the V&A Inspired By exhibition, has illustrated a Michael Morpurgo Short Story, and she designs Christmas Cards for two charities; Farms for City Children and InterAct Stroke Support.



Jill Storey

Jill is a Twickenham artist who enjoys working outside, mixing media and the changing mood of the seasons.

Many of her colourful, lively paintings result from travel to new destinations, but she continues to be inspired by her local parks, gardens and the riverside.



Judy Century

Judy creates vibrant, contemporary paintings inspired by the natural world. She enjoys capturing the essence of flowers or landscapes, stylising them, and making them her own with expressive marks and patterns.

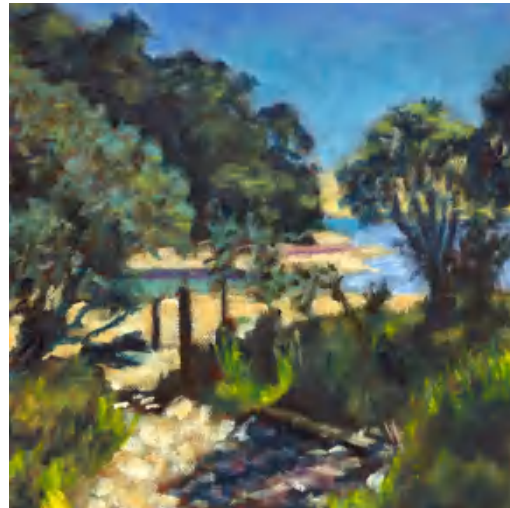
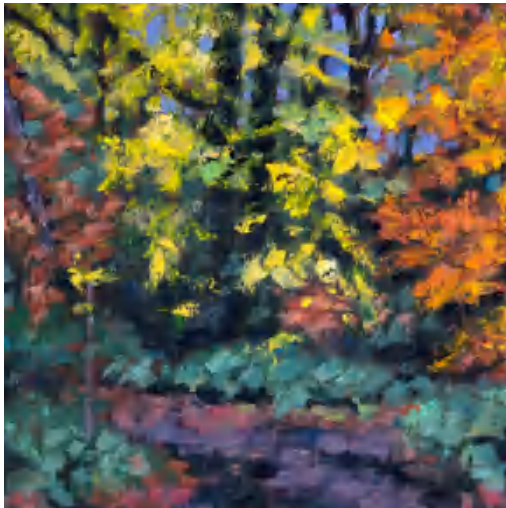
Judy plays with bold backgrounds, dramatic marks and scale, to create a contrast with the delicate nature of her subject matters. The results are energetic, colourful, statement pieces which celebrate nature whilst also creating decorative pieces to liven up interior spaces.



Julian Churcher

I'm a South-West London based landscape oil painter, inspired by creation. My first art prize was a box of oil pastels for a travel advertising poster at school. (Also my last, come to think of it.)

I've learned from enthusiastic and encouraging teachers at school, the great painters of history, and every other artist who has allowed me to 'look over their shoulder'. I'm happy to take commissions.



Kate Enters

Kate Enters is a Hertfordshire based figurative painter who explores the aesthetic inspired by contemporary issues and images. Her paintings depict a recognisable snapshot of daily life, occasionally conveying a bittersweet moment. There is often a social commentary running through her work but it is up to the audience to fill in the bigger picture or remember a personal experience that the visual she shares may evoke. Kate does not wish to dictate or manipulate a viewer's perception of what she paints. It is a shared experience in that way.



Kira Phoenix K'inan

Kira's work brings together fine art and craft through works on paper, inimitable glass sculptures, ephemeral installations, and multiexposure photography. Her love of art and colour began at an early age. She grew up in a vibrant community of artists on Lamma Island and would spend her weekends exploring the island where she developed a close connection to nature. She spent her summers travelling throughout Southeast Asia, America and the UK.



In 2012, Kira took a once in a lifetime trip where she travelled on her own to Hong Kong, Bali, Singapore, and Thailand. During this time, she created a series of watercolour works on paper. Upon returning to the UK, she developed a technique of translating her two-dimensional works on paper into three dimensional glass sculptures known as the Relief Glass Drawing technique. This labourintensive, hands-on process allowed Kira to experiment with surface textures by carving into plaster batts and combining different glass colours for a vivid outcome that responds to the natural light by creating shadows that dance on the walls or shift their tone depending on the type of light they sit in.



Today Kira's collections are known for their rich colour palette, dynamic lines that intertwist into one another, and works that are in constant visual flux.



Laura Fishman

Laura earned her BFA in Painting in her native United States from the State University of New York. It was here she studied with abstract expressionist Joop Sanders, friend and apprentice of Willem de Kooning, and the founder of the American Abstract Expressionism group. She also studied with Hudson River Valley artist Alex Martin, where her love of landscape painting was nurtured. The influence of her education can be seen throughout her works, with her use of bold colour and intuitive style.

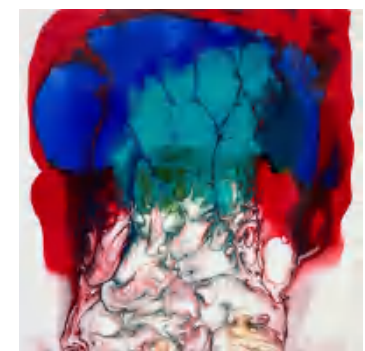


Laura continued her studies earning an AAS degree in Textile Design at the Fashion Institute of Technology, New York, and earned her MA Fine Art at Middlesex University, London. Laura lives and works in London, is a certified GOLDEN Artist Materials Educator and is Art Curator at Stephens House & Gardens, Finchley.



Since her early devotion to painting, Laura has been motivated by a love of nature and a fascination with paint as a material.

She uses colour, texture and movement, balancing intention along with chance to create a dynamic surface. She gravitates toward the abstract in art because it allows her the freedom to interpret the world she sees through her own creative lens.



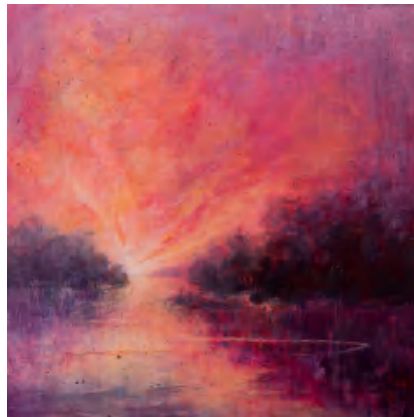
Laura Parker

Laura Parker is a self-taught, London-based artist. Laura is inspired by the natural world - from dramatic underwater views, to expansive landscapes, intimate still lifes and abstract works. She is a member of ArtCan and Richmond Art Society.

Art is a strand of Laura's life that has developed as she has grown older. For many years, art was something she loved and studied, gaining a degree in History of Art & Architecture at 45, but it had never occurred to her to try to create her own work.

At fifty, she began painting the landscape, and colourful still lifes. Then she used her scuba-diving experiences to depict the underwater world, producing images of marine life and of rusting wrecks. The natural world, and in particular water (above it, below it, and reflections in it), are a constant stimulus to her work.

Laura works in acrylics, oils and mixed media. She uses bold, contrasting colours, collage and energetic marks to guide the eye around a canvas. She builds up layers intuitively, to create artworks which feel dynamic and arresting, and where a history is inscribed on the surface itself.



Leigh Ferris

Leigh Ferris is a contemporary British artist exploring the connections between the human body and the cosmos.

Drawing on her background as a specialist nurse in organ donation, her work examines what it means to exist as both matter and consciousness – transforming anatomical and celestial forms into abstract, luminous compositions.

Leigh is working towards her solo exhibition, 'You Look Like the Universe From Here', opening at South Hill Park Arts Centre in June 2026. She continues to develop her practice through new commissions.

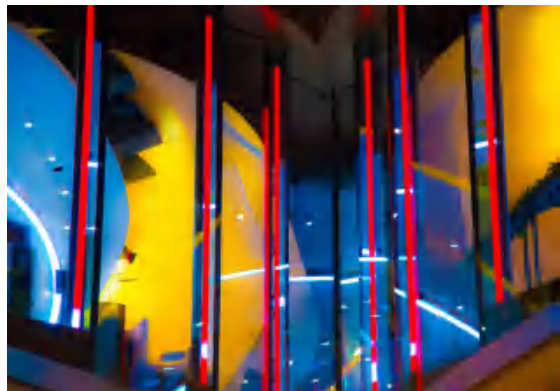


Linda Chapman

After graduating in photography, Linda pursued a photographic career for some years before deciding to leave the commercial world behind and follow her own creative journey.

Linda says: “My love of photography had started long ago with my fascination with light and the natural elements of photography. So more recently I decided to go back to my roots and once again explore the magic of natural light.

I capture natural light at it's most playful, through glass mainly when lots of refraction is happening. I am particularly drawn to architecture and often wonder around the urban streets for hours seeking those precious moments of light! Art has a great ability to change how an area can feel and how you see it. I hope I can bring you a unique perspective on city life, which will only be with natural elements, no filters or manipulation.”



Lucia Hardy

Lucia Hardy is an artist from Harold Wood, painting expressive and dynamic birds, wildlife and wild British landscapes.

Born and raised in London to an eclectic Italian, Irish and Lithuanian family, Lucia is inspired by nature's strength, resilience and the struggle to balance darkness and joy in life.

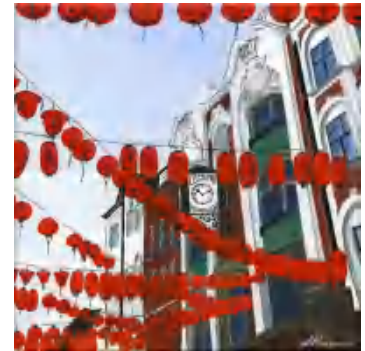
Painting in textural acrylics, in a contemporary, semi-abstract style, Lucia's work is dynamic, vibrant and full of emotional energy.

Lucia has shown her work with Roy's Art Fair at The Oxo Tower Bargehouse and Truman Brewery, works with the George Farnham Gallery in Suffolk, has and participates in local arts groups including the Brentwood Art Trail and is a member of the Colchester Art Society.



Lucy Pickford

I've painted since she was about 8 years old, and I haven't stopped. Having originally trained in both Landscape Architecture and Art History, I draw on my experiences to bring an alternative perspective to the landscapes I paint.



The landscape architecture has never quite left me and I still look at the world through its streetscapes and thresholds, looking at the combination of human design and nature in everything. I predominantly work in acrylics and watercolour but have recently expanded into cyanotypes, producing prints, hangings and lampshades, exploring similar themes through new mediums.

My Japan series was exhibited at Hoxton 253 in July 2019 and more recently my London Grows show was at Batsford Books and Gallery in November 2023.



I've exhibited in several group shows since 2020 both online and offline, with regular pieces in BobCat Gallery's Putney location. In 2021, I curated the 'Crossing the Liminal' group show for ArtCan at Hampstead Garden Gallery in and had my work featured on the screens of Flannels Oxford Street store as part of the W1 Curates #LightItBlue initiative.

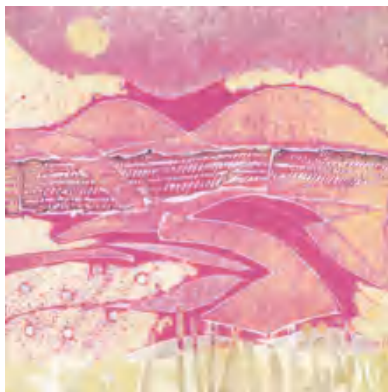
I'm a proud member of ArtCan, a contemporary arts organisation and was interviewed by Gita Joshi as part of her Curator's Salon artist interviews.



Maggie Penton

Maggie comes from a background of drawing and painting and enjoys exploring a variety of styles and media, now working mainly in oils. From this she has developed a passion for printmaking where those techniques of layering, glazing and texture with the excitement of colour combinations and experimentation inform her printing practice often combining the two.

Inspired by the natural world, Maggie uses collected and recycled materials to create her collagraph plates which she frequently combines with other printing techniques to develop her unique monoprints. Through these complementary combinations she explores themes around the natural world.



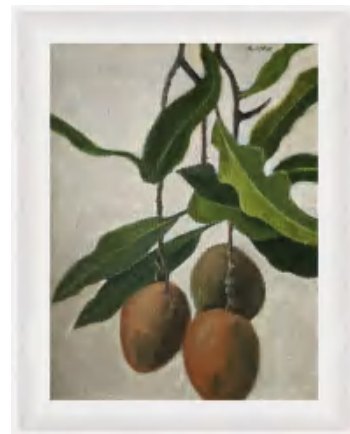
Mary Adam

Mary Adam was born and grew up in Ireland. She studied Medicine at University College Cork and worked two years in England before marrying and moving to the Caribbean.

Despite turning to painting relatively late in life, Mary has been actively exhibiting her work for several decades. Her first solo show took place at Horizons Gallery in Trinidad in 2004, since then she has had several solo shows and participated in a number of group exhibitions.

In 2011, she completed the BA Hons Painting at the Open College of the Arts and currently is working from her London-based studio.

In her work she often explores forms and motifs from nature and daily life and combines them to create multifaceted compositions. Drawing and painting are her core areas of interest, as she continues to examine the properties of light and colour through figuration and abstraction.



Matthew Sewell

Matthew is fascinated by the process of extracting the essence from a scene, abstracting it slightly from reality to enhance its impact. Mainly painted on location initially, sometimes reworked in the studio, at the moment he works en plein air mostly in water borne media; watercolour, pen and ink, acrylic, water soluble pencil etc., with oils more studio based. The greater part of his work are landscapes, though he also paints portraits and still-life occasionally.

He comes from an artistic family, with his father, sister and nephew all having produced work for sale on a regular basis. He has painted all his life, but seriously and consistently for the last 28 years, and has paintings in a number of private collections as well as some in restaurants. For the last 45 years he has been involved in restaurant and retail design, but is now spending more time painting.

He is part of a local group that aims to meet and paint every Saturday morning, usually outdoors but indoors during the winter so the watercolour can dry! This discipline helps keep skills current and improving, whatever the subject matter.



Melanie Cambridge

Melanie Cambridge is a landscape painter based in South London. Born in Stockport in 1963, Melanie spent her childhood in Cheshire. She loved art from an early age but at school was not encouraged. Only at age 30 did Melanie make the leap into painting full-time after being made redundant from her London job.

Her love of the outdoors is a key influence on her work and choice of subjects. Seascapes remain integral to her work, especially the beaches of West Wittering and the Solent. Each summer Melanie heads off for a week of immersive outdoor painting, often to Cornwall, to gather inspiration for her next collection.



Melanie Coote

Melanie is a London-based artist working in the medium of printmaking and painting to explore abstractions of forms and structures found in nature and the built environment.

Her printmaking includes monoprint, collagraph, screenprint and cyanotype (a photographic printing process, often referred to as sun printing) and she works with hand cut stencils, photo stencils & found materials such as mesh, packaging & fallen leaves. A common theme running throughout the botanical work is that of leaf structure and shape - from the delicate intricacy of close ups of leaf veins to the bolder more graphic shapes of silhouetted outlines.



Michelle Margetts

I became an artist in my fifties, having previously worked in mathematical research, as a garden designer and in finance. A common link to many of my careers – and now a key influence on my art – has been a love of patterns and strong geometric shapes, especially as they appear in the natural environment. I also love travelling and have been fortunate to visit many continents over the years. These experiences influence my painting and I try to convey a sense of 'being in the place' when I create my pieces.

My work is characterised by many different textures and layers contrasting with strong solid shapes. I love colour and my art is often bright, incorporating vivid and warm colours. My pieces are mainly abstract, as I aim to evoke the spirit of places I've visited through the colours and textures I see.

I hope you enjoy my art as much as I love creating it.



Peter Bourne

In 2017, Peter visited New Zealand for the first time, and his experience there was the initial inspiration for his series 'New Zealand Topography', two years in the making. As the series grew, it also explored the limits of composition.

Bespoke Obeche frames, specially designed for this series, are an indivisible and intrinsic part of each painting. The blue border between each painting and the frame represents the limitless Southern sky above New Zealand's tumultuous scenery.



Rebecca Tucker

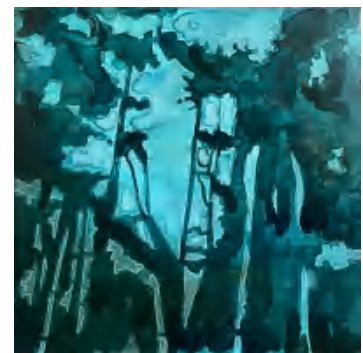
Rebecca is a Lancashire born/London based painter, with a BA in Fine Art from Reading University 1996. She is an active member of ArtCan.

Her paintings are the result of a visual 'discussion' between abstract and more representational methods of depicting subjects. Rebecca is keen to play with the viewers perception of subject and space in her paintings and then pull that preconceived idea back to the appreciation of what are essentially abstract marks on a two dimensional surface.

Abstraction has been a fundamental part of Rebecca's practice since her Fine Art Degree. Using landscape and the natural world as a starting point, the subject then fully or partially gives way to the pure joy of paint, drawn lines and marks on a surface. And once a painting is complete there then begins a collaborative interaction with the viewer, allowing them the freedom to bring their own experiences, emotions and memories to their reading of the work.

She works towards abandoning the sense that abstraction and figuration are mutually exclusive. The paintings can depict a notionally 'real' space, whilst also functioning, on closer inspection, as autonomous, non-referential, abstract and emotional objects.

Working primarily with water-based materials allows the use of water itself as part of the process, painting layers and then fully or partially washing them away, taking advantage of the 'happy accidents' that occur, bringing an element of experimentation into every painting. She enjoys the use of adding a graphic line to create silhouettes, redacting negative space, playing with foreground/background, or focusing so closely on something that it becomes essentially abstract.



Robyn Dansie

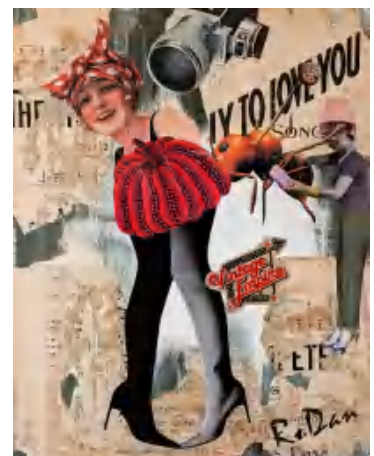
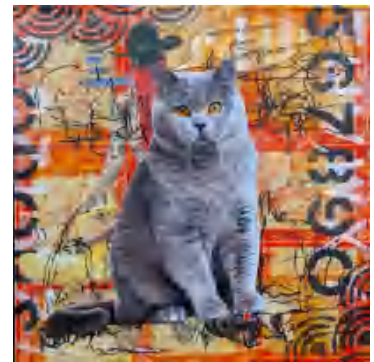
I am an Australian artist, living and working in my studio in London. My work includes painting, collage, mixed media, drawing and installations.

I have always had the desire to re-create newness from worn, tired, or familiar objects or symbols. I attribute this to a respect for my surroundings and an ever-present and long-held belief that nothing should go to waste or be discarded simply because it has exhausted its initial purpose for being.

Consequently, I pursue the goal of re-purposing materials and images to create unique, and sometimes confronting, works that reveal totally new concepts about objects, images or even a social beliefs. Where other people see commercial advertisements promoting the latest products, photos of picturesque landscapes, family portraits, useless ephemera items, even commercial documentation long past its use-by date or just simple, everyday trivial items, I see the makings of an art piece, capable of completely re-imagining the viewer's understanding of the objects.

I enjoy working with different elements and piecing them together to create some kind of logic and order. There is a fundamental pleasure in connecting a few images together to make something that did not previously exist.

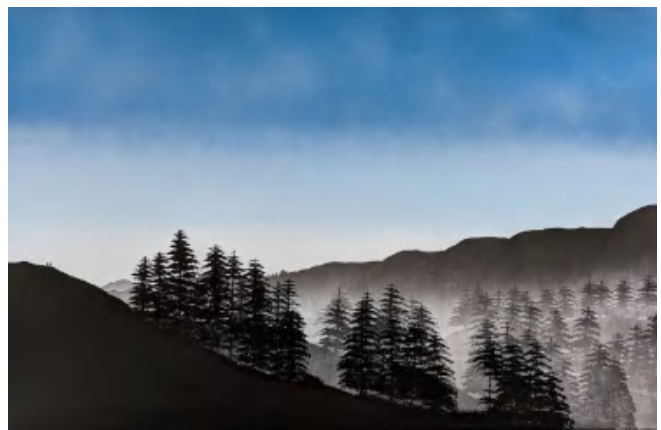
There is a landfill of ideas out there and a universe of nonsense that needs sorting.



Robert Owen Bloomfield

Robert's art combines ideas of his two favourite artists (Rothko and Gormley) by placing figures in stark and sometimes harsh landscapes with unyielding horizons. His favourite material is spray paint: "I often used spray paint as a teen when out creating guerrilla art with friends in London. The idea of using street material in a more traditional way appeals to me."

Robert prefers working with the cool tones of grey and black as it leaves more to the viewer's imagination. The art he creates comes from endless introspection, and a variety of inspiration. His work is thoughtful, and presented in an accessible way for a wide audience. In his own words: "Everyone should have an original painting in their home."



Roy Thomas

I am a self taught artist, working mostly in oils. I have been painting for over 50 years and at 75 I still paint every day.



Rowan Vuglar

At 72 years old I have held over 60 one man and group exhibitions. My work is always evolving, I love experimenting, but my work is also consistent as my own style has been well established. I hope you enjoy my journey.



Sal Jones

Sal is a contemporary figurative painter working in oils. Her paintings are about the human condition, our weaknesses and strengths, our emotional turmoil and contradictions; portrayed through the depiction of fictional subjects influenced by film and popular culture. Narratives are not necessarily explicit, inviting the viewer to invent and connect with the subjects.

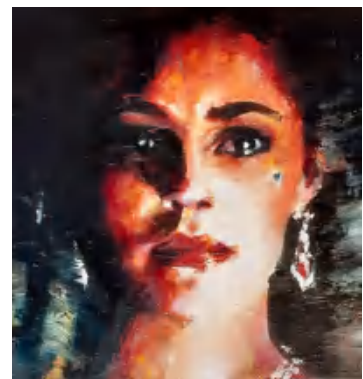


Sal has a BA Hons in Fine Art and a PGCE in Art & Design. She is a freelance Artist, Museum educator and exam board Assessment Associate. Sal has exhibited widely in London and the UK, in selected and solo shows. Works are held in private collections in the UK and internationally.

“My oil paintings are figurative, expressive and take the form of portraiture, although I consider them a different take on the genre. I use photographic source imagery as starting points for paintings, collecting and manipulating and finally selecting those that resonate with me on some level. I use the paint to draw directly on the canvas then build up layers from washes to more gestural mark making, often combining brushwork with palette knife. I invent colour palettes and marks that are emotive to the subject, experimenting with textures and techniques and using different tools to apply the paint.



I work on both large and small scales; the size and surface I am working on also dictate the processes used; it is an intuitive approach, both fascinating and challenging in equal amounts. I find painting a visual way to comment on contemporary life. The sources I select reference the cross-over between the fictional and the real in a society where the two appear to have become ever-more confused.”



Shannon Norman

My journey as an artist began in the isolating times of the pandemic, where I sought self-expression. With no training, I bought some paints and a paintbrush and allowed my passion to flourish at a time when the world stood still.

I found inspiration in the intricacies of nature - its colours, textures and patterns. My love of animals in particular can be seen throughout my work. As a self-taught artist, my story is a testament to the power of perseverance and self discovery.

Join me in celebrating the power of art and nature. I hope my art serves as a reminder that even during the most challenging times, beauty and inspiration can be found in the world around us.



Taya De La Cruz

Taya De La Cruz uses detailed, minuscule handwriting as a way of methodically distilling chaos into order. She invites the viewer to move closer to the work and further explore the narrative behind it. The concept of the written word is expanded and redefined by its intention, which is not necessarily legibility, but being seen as a whole.



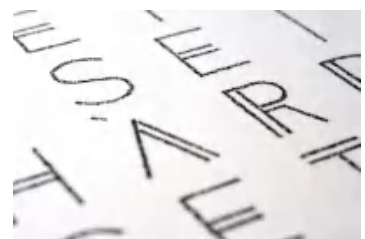
Taya's work is thematically centered around the human brain, and how we respond to life's challenging events. She is particularly inspired by the psychology of overcoming hardship, and elite performance. She focuses on finding light in the dark; difficult circumstances are made approachable and even beautiful. Her art encourages introspection, with the intention of large scale change, starting with each individual.



Taya's artistic approach serves as an antidote to the modern expectations of pace, achievement and results. Each labour intensive piece visually articulates the considerable amount of time taken to create it, and reinforces the message of slowing down and being present.

Taya recently created a new technique of painting, using medical-grade syringes and needles, which allow her to work with paint on a microscopic level.

Taya is a half-Spanish, half-Indian Londoner who was raised in sleepy southern Spain and educated in Gibraltar. She trained as an actress, and found her way into visual art organically.



www.BobCatGallery.co.uk

