

# Home data report

## 7005 Peters Path, Colleyville, Texas 76034, United States



**Total Area: 5890 sq. ft**

1st Floor: 4172 sq. ft, 2nd Floor: 1718 sq. ft

Excluded: Undefined 17 sq. ft, Patio 502 sq. ft, Covered porch 209 sq. ft, Fireplace 13 sq. ft, Attic 1248 sq. ft, Open to below 369 sq. ft, Walls: 376 sq. ft

### Property summary



Home data report

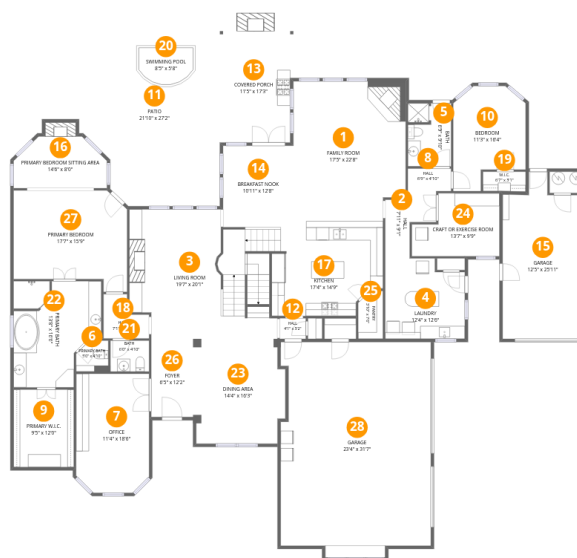
**7005 Peters Path, Colleyville, Texas 76034, United States**

 **1**  
Half baths

 **2**  
Garages

# Home data report

## 7005 Peters Path, Colleyville, Texas 76034, United States



### Room dimensions

Floor 1

Total:4172sqft

Excluded: 741sqft

#		Dimensions	sqft	Counted as living area
1	Family Room	17'5" x 22'8"	368 sq. ft	Yes
2	Hall	7'11" x 9'1"	49 sq. ft	Yes
3	Living Room	19'7" x 20'1"	371 sq. ft	Yes
4	Laundry	12'4" x 12'6"	145 sq. ft	Yes
5	Bath	6'9" x 9'10"	64 sq. ft	Yes
6	Primary Bath	5'0" x 4'10"	22 sq. ft	Yes
7	Office	11'4" x 18'6"	203 sq. ft	Yes
8	Hall	6'9" x 4'10"	29 sq. ft	Yes
9	Primary W.I.C.	9'5" x 12'0"	113 sq. ft	Yes
10	Bedroom	11'3" x 16'4"	152 sq. ft	Yes

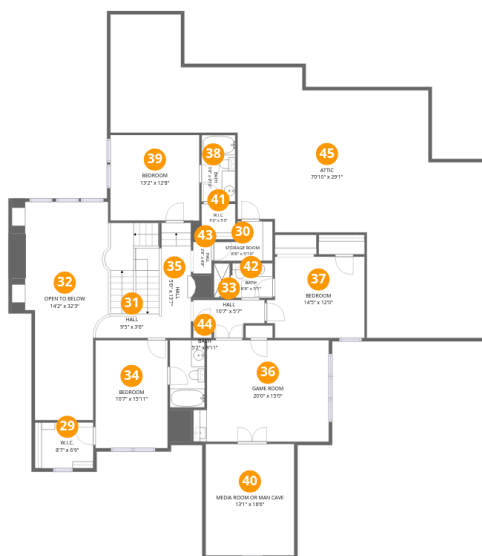
## Home data report

**7005 Peters Path, Colleyville, Texas 76034, United States**

#		Dimensions	sqft	Counted as living area
11	Patio	21'10" x 27'2"	544 sq. ft	No
12	Hall	4'1" x 3'2"	13 sq. ft	Yes
13	Covered Porch	11'5" x 17'3"	209 sq. ft	No
14	Breakfast Nook	10'11" x 12'8"	138 sq. ft	Yes
15	Garage	12'5" x 25'11"	287 sq. ft	Yes
16	Primary Bedroom Sitting Area	14'6" x 8'0"	112 sq. ft	Yes
17	Kitchen	17'4" x 14'9"	260 sq. ft	Yes
18	Hall	7'1" x 6'11"	38 sq. ft	Yes
19	W.I.C.	6'7" x 3'1"	20 sq. ft	Yes
20	Swimming Pool	8'5" x 5'8"	43 sq. ft	No
21	Bath	6'0" x 4'10"	29 sq. ft	Yes
22	Primary Bath	13'8" x 16'6"	193 sq. ft	Yes
23	Dining Area	14'4" x 16'3"	221 sq. ft	Yes
24	Craft Or Exercise Room	13'7" x 9'9"	113 sq. ft	Yes
25	Pantry	3'10" x 7'6"	27 sq. ft	Yes
26	Foyer	6'5" x 12'2"	79 sq. ft	Yes
27	Primary Bedroom	17'7" x 15'9"	246 sq. ft	Yes
28	Garage	23'4" x 31'7"	744 sq. ft	Yes

Home data report

7005 Peters Path, Colleyville, Texas 76034, United States



Room dimensions

Floor 2

Total:1718sqft

Excluded: 1617sqft

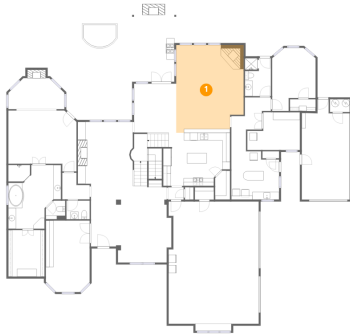
#		Dimensions	sqft	Counted as living area
29	W.I.C.	8'7" x 6'9"	59 sq. ft	Yes
30	Storage Room	8'8" x 5'10"	40 sq. ft	Yes
31	Hall	9'5" x 3'6"	136 sq. ft	Yes
32	Open To Below	14'2" x 32'3"	369 sq. ft	No
33	Hall	10'7" x 5'7"	46 sq. ft	Yes
34	Bedroom	10'7" x 15'11"	170 sq. ft	Yes
35	Hall	5'0" x 13'7"	88 sq. ft	Yes
36	Game Room	20'0" x 15'0"	279 sq. ft	Yes
37	Bedroom	14'5" x 12'0"	163 sq. ft	Yes
38	Bath	5'0" x 9'10"	49 sq. ft	Yes

Home data report

7005 Peters Path, Colleyville, Texas 76034, United States

#		Dimensions	sqft	Counted as living area
39	Bedroom	13'2" x 12'8"	169 sq. ft	Yes
40	Media Room Or Man Cave	13'1" x 16'6"	215 sq. ft	Yes
41	W.I.C.	5'0" x 5'3"	26 sq. ft	Yes
42	Bath	8'8" x 5'1"	44 sq. ft	Yes
43	Hall	2'8" x 4'8"	13 sq. ft	Yes
44	Bath	5'2" x 9'11"	51 sq. ft	Yes
45	Attic	70'10" x 29'1"	1248 sq. ft	No

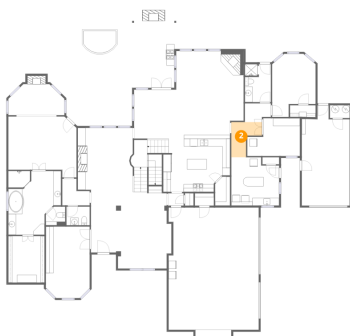
## 1 Floor 1 - Family Room



Dimensions: 17'5" x 22'8"  
Area: 368 sq. ft  
Counted as living area: Yes

Heated: Yes  
Finished: Yes  
Enclosed: Yes  
Contiguous: Yes  
Permitted: Yes  
Wet space: No  
Addition: No  
Conversion: No

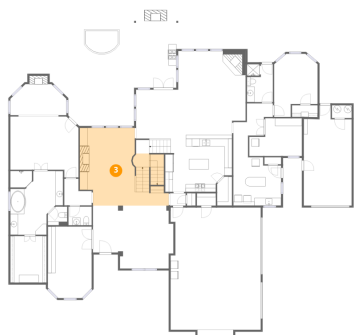
## 2 Floor 1 - Hall



Dimensions: 7'11" x 9'1"  
Area: 49 sq. ft  
Counted as living area: Yes

Heated: Yes  
Finished: Yes  
Enclosed: Yes  
Contiguous: Yes  
Permitted: Yes  
Wet space: No  
Addition: No  
Conversion: No

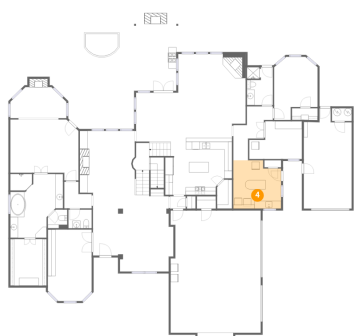
### 3 Floor 1 - Living Room



Dimensions: 19'7" x 20'1"  
Area: 371 sq. ft  
Counted as living area: Yes

Heated: Yes  
Finished: Yes  
Enclosed: Yes  
Contiguous: Yes  
Permitted: Yes  
Wet space: No  
Addition: No  
Conversion: No

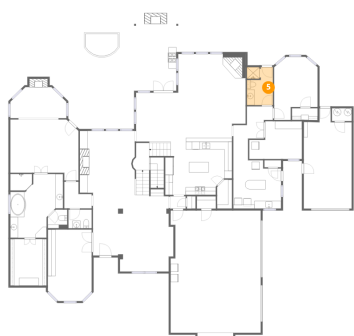
### 4 Floor 1 - Laundry



Dimensions: 12'4" x 12'6"  
Area: 145 sq. ft  
Counted as living area: Yes

Heated: Yes  
Finished: Yes  
Enclosed: Yes  
Contiguous: Yes  
Permitted: Yes  
Wet space: No  
Addition: No  
Conversion: No

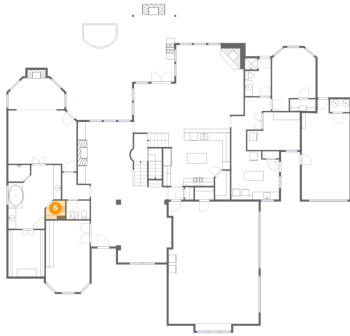
### 5 Floor 1 - Bath



Dimensions: 6'9" x 9'10"  
Area: 64 sq. ft  
Counted as living area: Yes

Heated: Yes  
Finished: Yes  
Enclosed: Yes  
Contiguous: Yes  
Permitted: Yes  
Wet space: Yes  
Addition: No  
Conversion: No

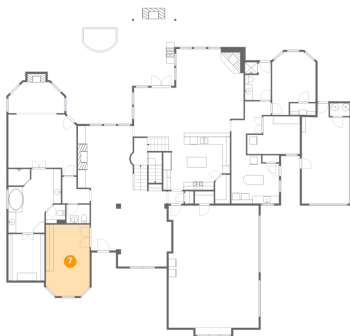
## 6 Floor 1 - Primary Bath



Dimensions: 5'0" x 4'10"  
Area: 22 sq. ft  
Counted as living area: Yes

Heated: Yes  
Finished: Yes  
Enclosed: Yes  
Contiguous: Yes  
Permitted: Yes  
Wet space: Yes  
Addition: No  
Conversion: No

## 7 Floor 1 - Office



Dimensions: 11'4" x 18'6"  
Area: 203 sq. ft  
Counted as living area: Yes

Heated: Yes  
Finished: Yes  
Enclosed: Yes  
Contiguous: Yes  
Permitted: Yes  
Wet space: No  
Addition: No  
Conversion: No

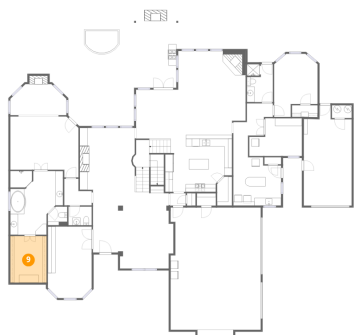
## 8 Floor 1 - Hall



Dimensions: 6'9" x 4'10"  
Area: 29 sq. ft  
Counted as living area: Yes

Heated: Yes  
Finished: Yes  
Enclosed: Yes  
Contiguous: Yes  
Permitted: Yes  
Wet space: No  
Addition: No  
Conversion: No

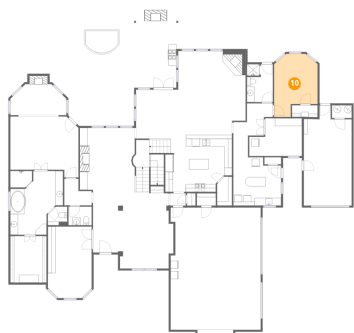
### 9 Floor 1 - Primary W.I.C.



Dimensions: 9'5" x 12'0"  
Area: 113 sq. ft  
Counted as living area: Yes

Heated: Yes  
Finished: Yes  
Enclosed: Yes  
Contiguous: Yes  
Permitted: Yes  
Wet space: No  
Addition: No  
Conversion: No

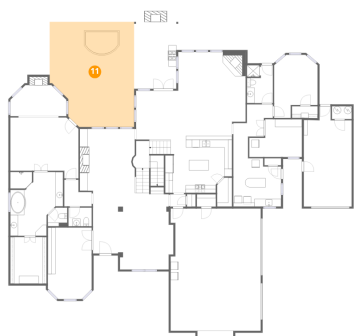
### 10 Floor 1 - Bedroom



Dimensions: 11'3" x 16'4"  
Area: 152 sq. ft  
Counted as living area: Yes

Heated: Yes  
Finished: Yes  
Enclosed: Yes  
Contiguous: Yes  
Permitted: Yes  
Wet space: No  
Addition: No  
Conversion: No

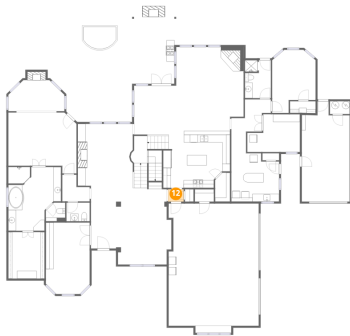
### 11 Floor 1 - Patio



Dimensions: 21'10" x 27'2"  
Area: 544 sq. ft  
Counted as living area: No

Heated: No  
Finished: No  
Enclosed: No  
Contiguous: Yes  
Permitted: Yes  
Wet space: No  
Addition: No  
Conversion: No

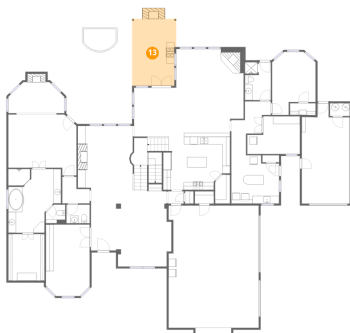
## 12 Floor 1 - Hall



Dimensions: 4'1" x 3'2"  
Area: 13 sq. ft  
Counted as living area: Yes

Heated: Yes  
Finished: Yes  
Enclosed: Yes  
Contiguous: Yes  
Permitted: Yes  
Wet space: No  
Addition: No  
Conversion: No

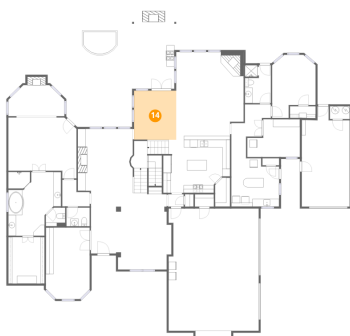
## 13 Floor 1 - Covered Porch



Dimensions: 11'5" x 17'3"  
Area: 209 sq. ft  
Counted as living area: No

Heated: No  
Finished: No  
Enclosed: No  
Contiguous: Yes  
Permitted: Yes  
Wet space: No  
Addition: No  
Conversion: No

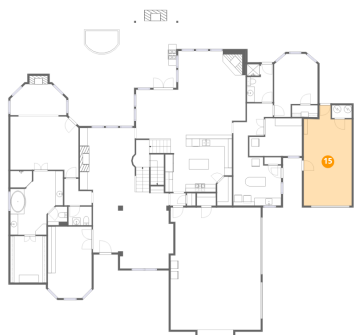
## 14 Floor 1 - Breakfast Nook



Dimensions: 10'11" x 12'8"  
Area: 138 sq. ft  
Counted as living area: Yes

Heated: Yes  
Finished: Yes  
Enclosed: Yes  
Contiguous: Yes  
Permitted: Yes  
Wet space: No  
Addition: No  
Conversion: No

### 15 Floor 1 - Garage



Dimensions: 12'5" x 25'11"

Area: 287 sq. ft

Counted as living area: No

Heated: No

Finished: Yes

Enclosed: Yes

Contiguous: Yes

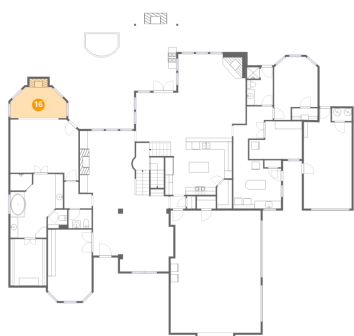
Permitted: Yes

Wet space: No

Addition: No

Conversion: No

### 16 Floor 1 - Primary Bedroom Sitting Area



Dimensions: 14'6" x 8'0"

Area: 112 sq. ft

Counted as living area: Yes

Heated: Yes

Finished: Yes

Enclosed: Yes

Contiguous: Yes

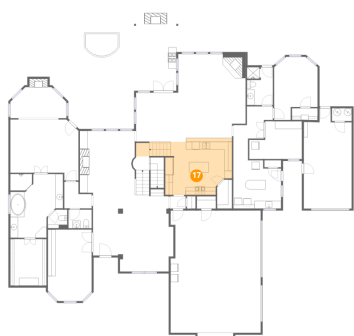
Permitted: Yes

Wet space: No

Addition: No

Conversion: No

### 17 Floor 1 - Kitchen



Dimensions: 17'4" x 14'9"

Area: 260 sq. ft

Counted as living area: Yes

Heated: Yes

Finished: Yes

Enclosed: Yes

Contiguous: Yes

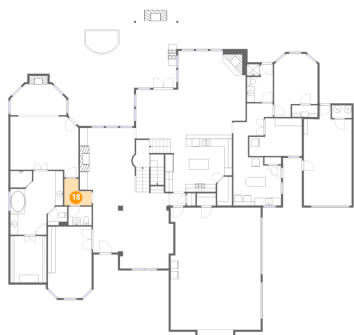
Permitted: Yes

Wet space: No

Addition: No

Conversion: No

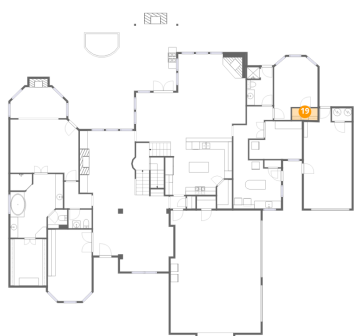
### 18 Floor 1 - Hall



Dimensions: 7'1" x 6'11"  
Area: 38 sq. ft  
Counted as living area: Yes

Heated: Yes  
Finished: Yes  
Enclosed: Yes  
Contiguous: Yes  
Permitted: Yes  
Wet space: No  
Addition: No  
Conversion: No

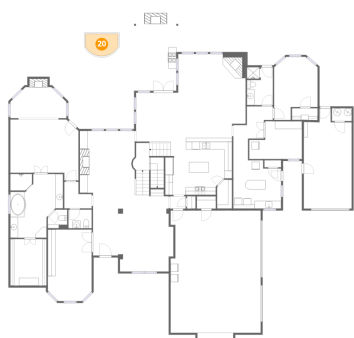
### 19 Floor 1 - W.I.C.



Dimensions: 6'7" x 3'1"  
Area: 20 sq. ft  
Counted as living area: Yes

Heated: Yes  
Finished: Yes  
Enclosed: Yes  
Contiguous: Yes  
Permitted: Yes  
Wet space: No  
Addition: No  
Conversion: No

### 20 Floor 1 - Swimming Pool



Dimensions: 8'5" x 5'8"  
Area: 43 sq. ft  
Counted as living area: No

Heated: No  
Finished: No  
Enclosed: No  
Contiguous: Yes  
Permitted: No  
Wet space: No  
Addition: No  
Conversion: No

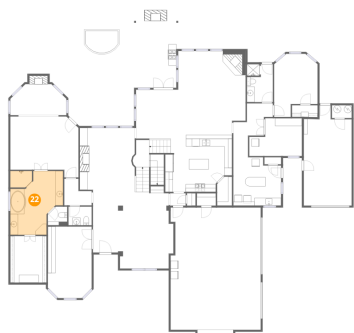
### 21 Floor 1 - Bath



Dimensions: 6'0" x 4'10"  
Area: 29 sq. ft  
Counted as living area: Yes

Heated: Yes  
Finished: Yes  
Enclosed: Yes  
Contiguous: Yes  
Permitted: Yes  
Wet space: Yes  
Addition: No  
Conversion: No

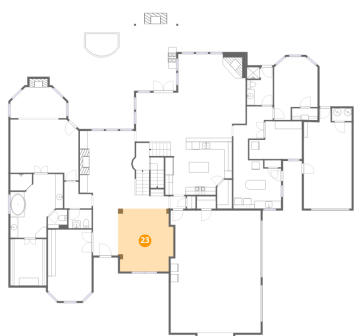
### 22 Floor 1 - Primary Bath



Dimensions: 13'8" x 16'6"  
Area: 193 sq. ft  
Counted as living area: Yes

Heated: Yes  
Finished: Yes  
Enclosed: Yes  
Contiguous: Yes  
Permitted: Yes  
Wet space: Yes  
Addition: No  
Conversion: No

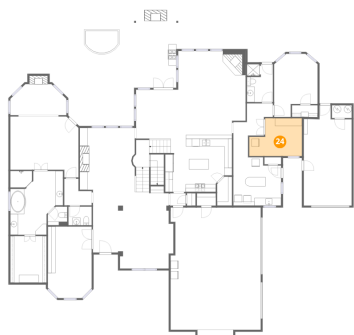
### 23 Floor 1 - Dining Area



Dimensions: 14'4" x 16'3"  
Area: 221 sq. ft  
Counted as living area: Yes

Heated: Yes  
Finished: Yes  
Enclosed: Yes  
Contiguous: Yes  
Permitted: Yes  
Wet space: No  
Addition: No  
Conversion: No

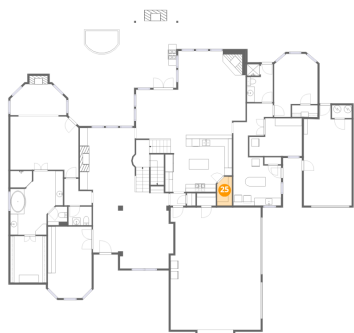
### 24 Floor 1 - Craft Or Exercise Room



Dimensions: 13'7" x 9'9"  
Area: 113 sq. ft  
Counted as living area: Yes

Heated: Yes  
Finished: Yes  
Enclosed: Yes  
Contiguous: Yes  
Permitted: Yes  
Wet space: No  
Addition: No  
Conversion: No

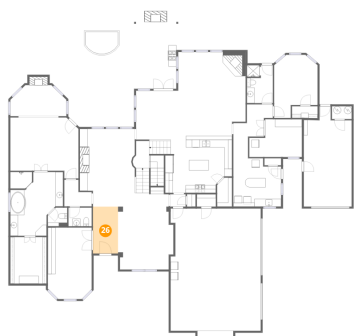
### 25 Floor 1 - Pantry



Dimensions: 3'10" x 7'6"  
Area: 27 sq. ft  
Counted as living area: Yes

Heated: Yes  
Finished: Yes  
Enclosed: Yes  
Contiguous: Yes  
Permitted: Yes  
Wet space: No  
Addition: No  
Conversion: No

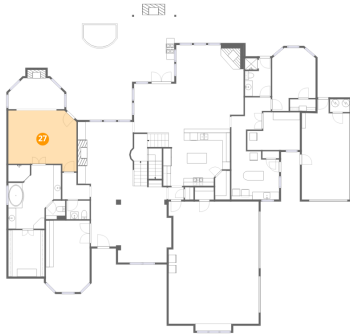
### 26 Floor 1 - Foyer



Dimensions: 6'5" x 12'2"  
Area: 79 sq. ft  
Counted as living area: Yes

Heated: Yes  
Finished: Yes  
Enclosed: Yes  
Contiguous: Yes  
Permitted: Yes  
Wet space: No  
Addition: No  
Conversion: No

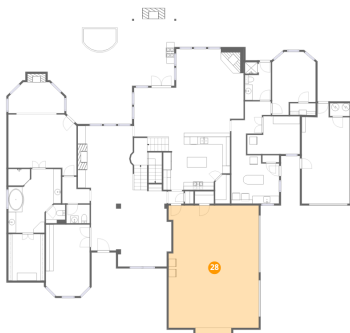
### 27 Floor 1 - Primary Bedroom



Dimensions: 17'7" x 15'9"  
Area: 246 sq. ft  
Counted as living area: Yes

Heated: Yes  
Finished: Yes  
Enclosed: Yes  
Contiguous: Yes  
Permitted: Yes  
Wet space: No  
Addition: No  
Conversion: No

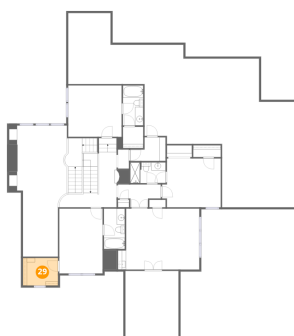
### 28 Floor 1 - Garage



Dimensions: 23'4" x 31'7"  
Area: 744 sq. ft  
Counted as living area: No

Heated: No  
Finished: Yes  
Enclosed: Yes  
Contiguous: Yes  
Permitted: Yes  
Wet space: No  
Addition: No  
Conversion: No

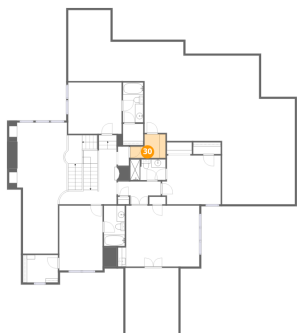
### 29 Floor 2 - W.I.C.



Dimensions: 8'7" x 6'9"  
Area: 59 sq. ft  
Counted as living area: Yes

Heated: Yes  
Finished: Yes  
Enclosed: Yes  
Contiguous: Yes  
Permitted: Yes  
Wet space: No  
Addition: No  
Conversion: No

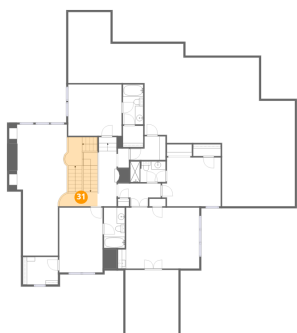
### 30 Floor 2 - Storage Room



Dimensions: 8'8" x 5'10"  
Area: 40 sq. ft  
Counted as living area: Yes

Heated: Yes  
Finished: Yes  
Enclosed: Yes  
Contiguous: Yes  
Permitted: Yes  
Wet space: No  
Addition: No  
Conversion: No

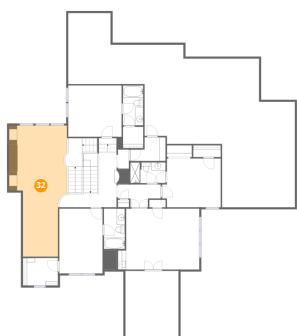
### 31 Floor 2 - Hall



Dimensions: 9'5" x 3'6"  
Area: 136 sq. ft  
Counted as living area: Yes

Heated: Yes  
Finished: Yes  
Enclosed: Yes  
Contiguous: Yes  
Permitted: Yes  
Wet space: No  
Addition: No  
Conversion: No

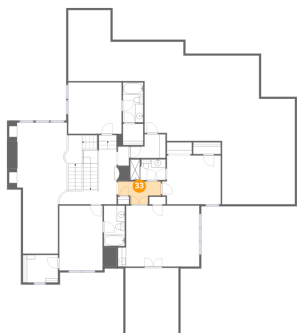
### 32 Floor 2 - Open To Below



Dimensions: 14'2" x 32'3"  
Area: 369 sq. ft  
Counted as living area: No

Heated: No  
Finished: No  
Enclosed: No  
Contiguous: Yes  
Permitted: No  
Wet space: No  
Addition: No  
Conversion: No

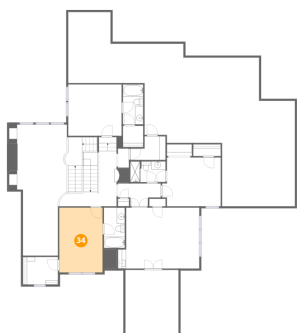
**33** Floor 2 - Hall



Dimensions: 10'7" x 5'7"  
Area: 46 sq. ft  
Counted as living area: Yes

Heated: Yes  
Finished: Yes  
Enclosed: Yes  
Contiguous: Yes  
Permitted: Yes  
Wet space: No  
Addition: No  
Conversion: No

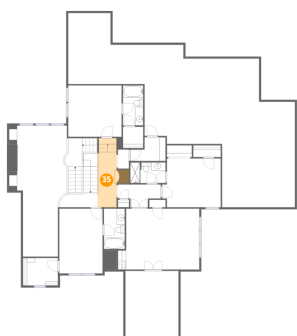
**34** Floor 2 - Bedroom



Dimensions: 10'7" x 15'11"  
Area: 170 sq. ft  
Counted as living area: Yes

Heated: Yes  
Finished: Yes  
Enclosed: Yes  
Contiguous: Yes  
Permitted: Yes  
Wet space: No  
Addition: No  
Conversion: No

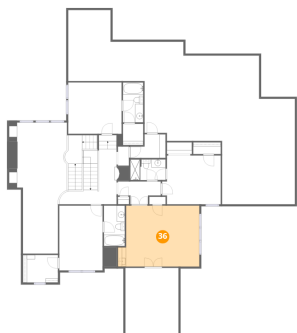
**35** Floor 2 - Hall



Dimensions: 5'0" x 13'7"  
Area: 88 sq. ft  
Counted as living area: Yes

Heated: Yes  
Finished: Yes  
Enclosed: Yes  
Contiguous: Yes  
Permitted: Yes  
Wet space: No  
Addition: No  
Conversion: No

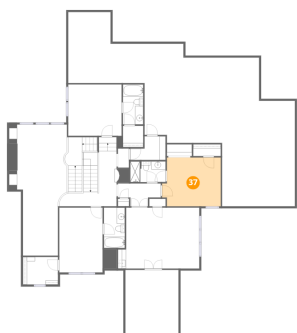
### 36 Floor 2 - Game Room



Dimensions: 20'0" x 15'0"  
Area: 279 sq. ft  
Counted as living area: Yes

Heated: Yes  
Finished: Yes  
Enclosed: Yes  
Contiguous: Yes  
Permitted: Yes  
Wet space: No  
Addition: No  
Conversion: No

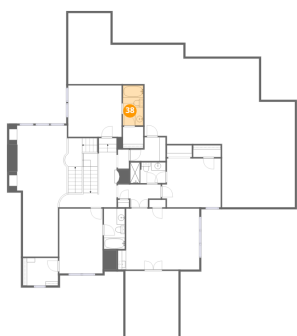
### 37 Floor 2 - Bedroom



Dimensions: 14'5" x 12'0"  
Area: 163 sq. ft  
Counted as living area: Yes

Heated: Yes  
Finished: Yes  
Enclosed: Yes  
Contiguous: Yes  
Permitted: Yes  
Wet space: No  
Addition: No  
Conversion: No

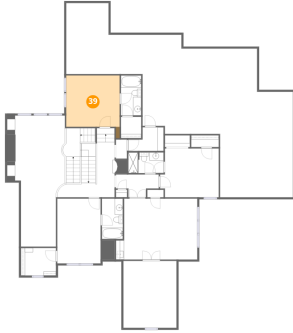
### 38 Floor 2 - Bath



Dimensions: 5'0" x 9'10"  
Area: 49 sq. ft  
Counted as living area: Yes

Heated: Yes  
Finished: Yes  
Enclosed: Yes  
Contiguous: Yes  
Permitted: Yes  
Wet space: Yes  
Addition: No  
Conversion: No

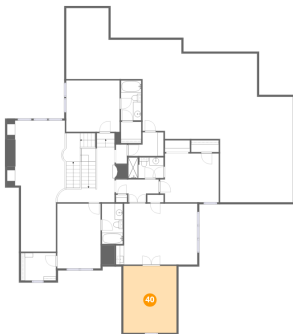
### 39 Floor 2 - Bedroom



Dimensions: 13'2" x 12'8"  
Area: 169 sq. ft  
Counted as living area: Yes

Heated: Yes  
Finished: Yes  
Enclosed: Yes  
Contiguous: Yes  
Permitted: Yes  
Wet space: No  
Addition: No  
Conversion: No

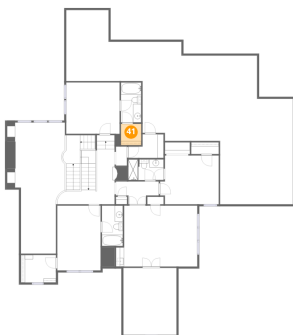
### 40 Floor 2 - Media Room Or Man Cave



Dimensions: 13'1" x 16'6"  
Area: 215 sq. ft  
Counted as living area: Yes

Heated: Yes  
Finished: Yes  
Enclosed: Yes  
Contiguous: Yes  
Permitted: Yes  
Wet space: No  
Addition: No  
Conversion: No

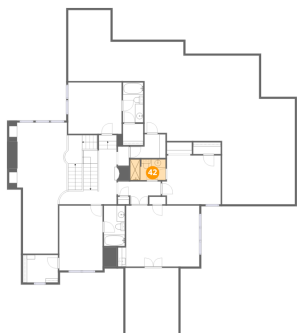
### 41 Floor 2 - W.I.C.



Dimensions: 5'0" x 5'3"  
Area: 26 sq. ft  
Counted as living area: Yes

Heated: Yes  
Finished: Yes  
Enclosed: Yes  
Contiguous: Yes  
Permitted: Yes  
Wet space: No  
Addition: No  
Conversion: No

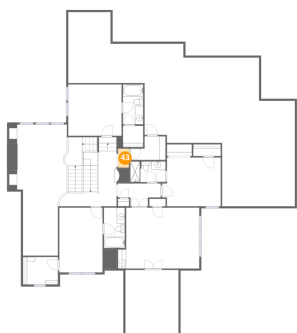
**42** Floor 2 - Bath



Dimensions: 8'8" x 5'1"  
Area: 44 sq. ft  
Counted as living area: Yes

Heated: Yes  
Finished: Yes  
Enclosed: Yes  
Contiguous: Yes  
Permitted: Yes  
Wet space: Yes  
Addition: No  
Conversion: No

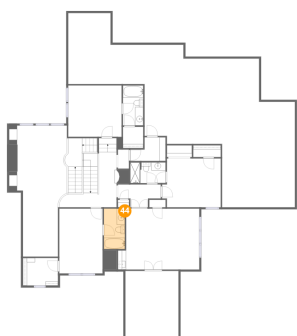
**43** Floor 2 - Hall



Dimensions: 2'8" x 4'8"  
Area: 13 sq. ft  
Counted as living area: Yes

Heated: Yes  
Finished: Yes  
Enclosed: Yes  
Contiguous: Yes  
Permitted: Yes  
Wet space: No  
Addition: No  
Conversion: No

**44** Floor 2 - Bath

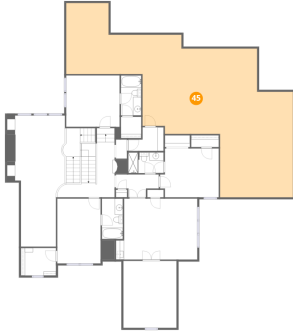


Dimensions: 5'2" x 9'11"  
Area: 51 sq. ft  
Counted as living area: Yes

Heated: Yes  
Finished: Yes  
Enclosed: Yes  
Contiguous: Yes  
Permitted: Yes  
Wet space: Yes  
Addition: No  
Conversion: No

**45** Floor 2 - Attic

---



**Dimensions:** 70'10" x 29'1"  
**Area:** 1248 sq. ft  
**Counted as living area:** No

**Heated:** No  
**Finished:** No  
**Enclosed:** Yes  
**Contiguous:** Yes  
**Permitted:** Yes  
**Wet space:** No  
**Addition:** No  
**Conversion:** No