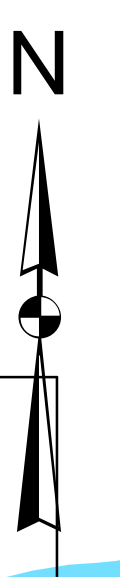
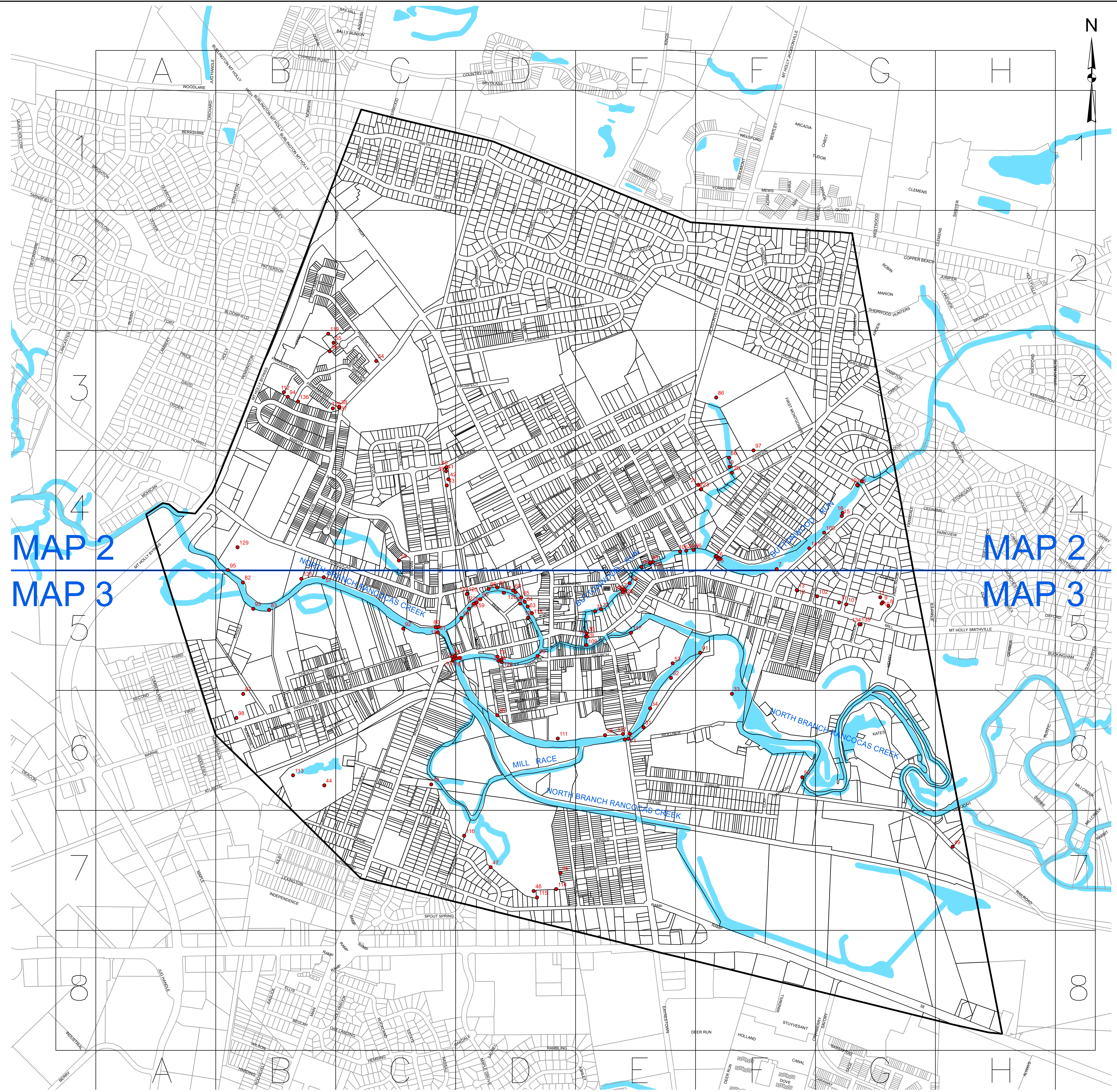



MOUNT HOLLY TOWNSHIP STORMWATER MANAGEMENT PLAN OUTFALL PIPE MAP



MAP 2
MAP 3

MAP 2
MAP 3

NOTES:
1. THIS MAP WAS DEVELOPED USING DIGITAL DATA FROM THE BURLINGTON COUNTY GEOGRAPHIC INFORMATION SYSTEM. THIS MAP IS A SECONDARY PRODUCT AND HAS NOT BEEN VERIFIED BY THE COUNTY OF BURLINGTON. IT IS NOT AUTHORIZED BY THE COUNTY.

APPROVED _____ DATE _____	REVISIONS	DATE	BY	 RICHARD A. ALAIMO ASSOCIATES <i>Consulting Engineers</i> 200 High Street Mount Holly, N.J. 2 Market Street Paterson, N.J.	STORMWATER MANAGEMENT PLAN MOUNT HOLLY TOWNSHIP	CLIENT MOUNT HOLLY TOWNSHIP	DATE APRIL 2021	MAP 1
Richard A. Alaimo - P.E. N.J. PROFESSIONAL ENGINEER LICENCE NO. 13195	Added Padstock Outfalls 10/20 CFC				PROJECT LOCATION MOUNT HOLLY TOWNSHIP BURLINGTON COUNTY NEW JERSEY	PROJECT NO. M-050-007-000	CREATED BY MAC	CHECKED BY R.A.A.

SCALE: 1" = 500'