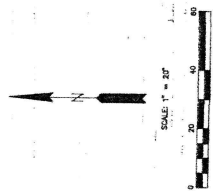
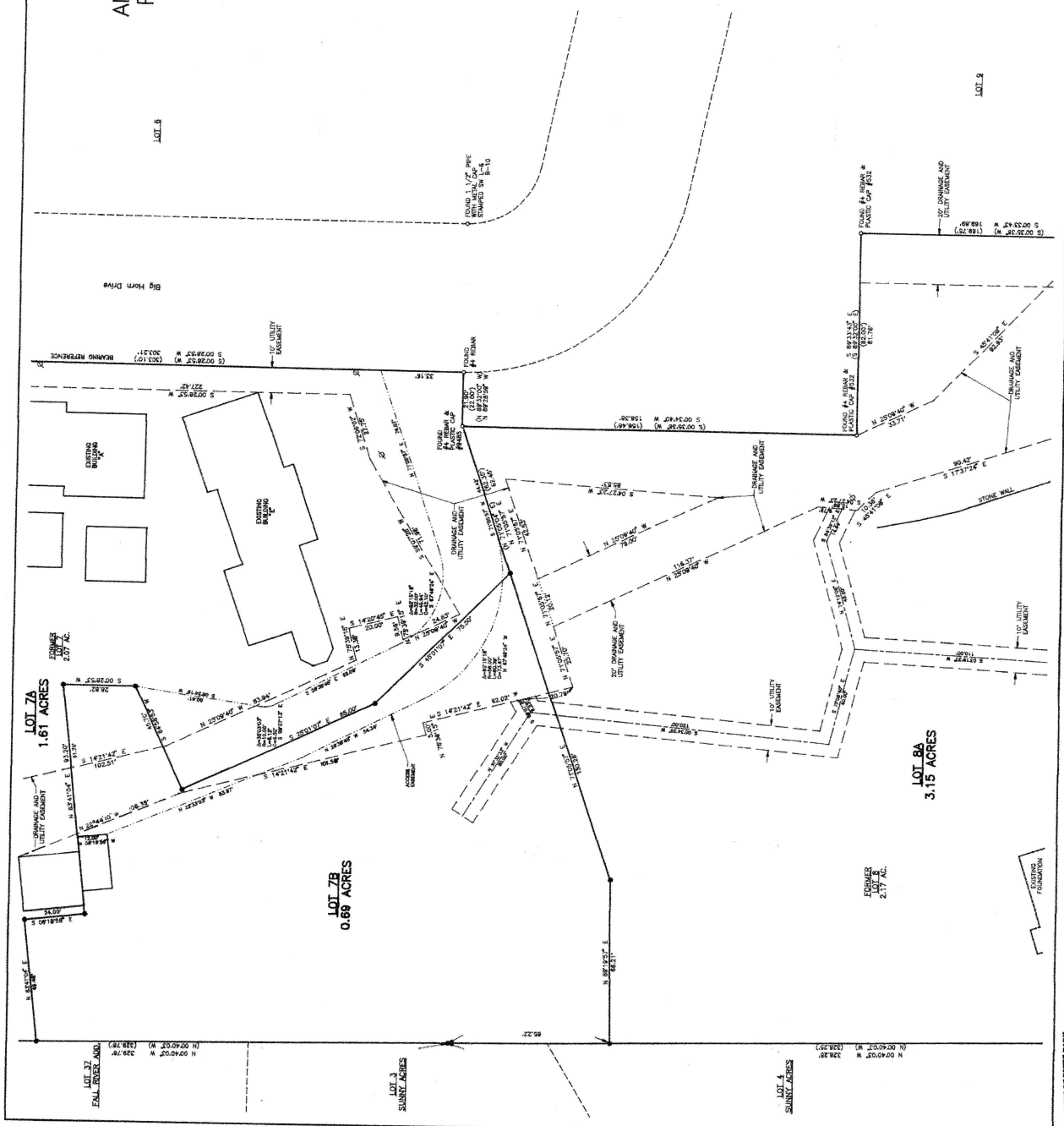




# AMENDED PLAT

OF A PORTION OF LOTS 7, 8, 24,  
AND 25, BLOCK 10, SECOND AMENDED  
PLAT OF THE TOWN OF ESTES PARK,  
LOCATED IN THE NW 1/4 OF SECTION 25, T5N, R73W  
OF THE 6th P.M., LARIMER COUNTY, COLORADO



PREPARED BY:  
P.O. BOX 100  
ESTES PARK, CO. 80517  
(970) 586-1088

LOT 7A  
1.61 ACRES

LOT 7B  
0.69 ACRES

LOT 7A  
3.15 ACRES

LOT 7C  
FALL-ROCK ADD.  
1.00 ACRES

LOT 7D  
SUNNY ACRES

LOT 7E  
SUNNY ACRES

LOT 7F  
2.17 AC.

TOWN OF ESTES PARK  
P.O. BOX 100  
ESTES PARK, CO. 80517  
SHEET 2 OF 2