

Health Risk Appraisal System (HRA-II)



HRA uses the bio-electrical induction technology and the human body impedance measuring technology. During the test, it sends 1.3V voltage at the 6 contact points. The system will test and analyze 220 impedance values of 15 functional body areas of the body's 9 major systems. The collected impedance value will be compared with the standard sample database and issue a test report. The test report will be interpreted by a doctor or trained professional.

HRA is both FDA and CE certified. The system has been widely used. More than 500 facilities has installed HRA including hospitals, physical examination centers, preventive treatment centers, health management centers, medical institute, medical universities, etc.

The results of the conventional physical examination can only tell us whether we are ill or not, while our HRA device will not only tell us whether we are ill or not, but also remind us which disease risks our body is susceptible to and how serious the risks are. Then we can make early intervention to prevent and avoid the disease at an early stage, and avoid the disease pathological changes to occur.





Examination Process

A. Clean both hands and feet sensors by applying 75% medical alcohol

C. The examinee place both hands and feet at the center of the sensor ,the operator paste the disposable-soluble sensors on the forehead, make sure sensor are away from hair and eyebrow



B. Remove mobile phone and all other metal articles; no sweat or stains are allowed on the forehead, hands and feet

D. The examination lasts five minutes, during the process, the examinee is not allowed to move hands and feet and should always keep sufficient contact with the sensors plate

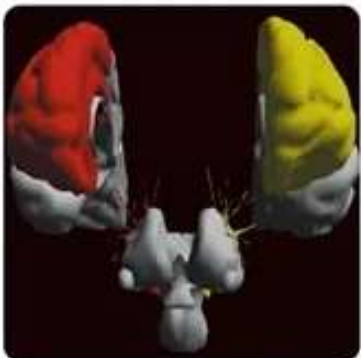
Key Features

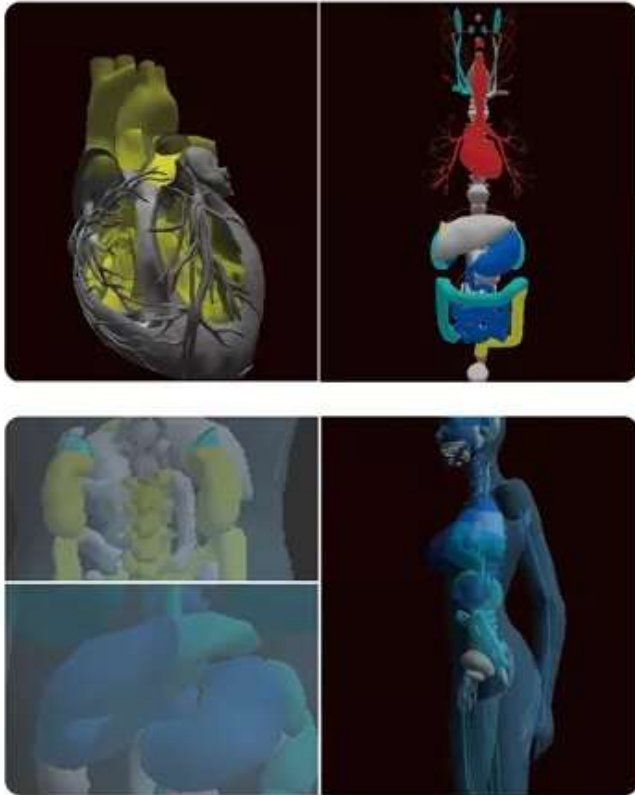
- Bioelectrical Induction / Bioelectrical Impedance Measuring / Chronoamperometry Analysis Technology
- Safe, Non-Invasive and No Radiation
- Fast and Accurate (report available in 5 minutes)
- Easy understanding and operation
- 5 minutes and 38 seconds whole body scanning & clinical conformity rate reaches up to 96%
- Functional diagnosis of 220 biochemical indexes in 9 human body systems
- Early intervention to prevent and avoid diseases at an early stage
- Assessment over All Systems and Organs
- Disease Screening and Health Solution
- Do Not Need Empty Stomach
- Do Not Need to Draw Blood
- Harmless and Repeatable



Health Parameters

- Early-stage Respiratory System Parameter
- Early-stage Digestive System Parameter
- Immune System Status
- Cell Variant Status
- Early-stage Urogenital System
- Early-stage Cardiovascular System Parameter
- Early-stage Motor System Parameter
- Early-stage Endocrine System Parameter
- Early-stage Nervous System Parameter'
- Early-stage Irritability Parameter
- Early-stage Infection Parameter
- Early-stage Internal Environment and Basic Metabolism Parameter
- Early-stage Oxidative Stress Parameter
- Early-stage Ent (Ear, Nose and Throat) System Parameter
- Early-stage Integumentary System Parameter





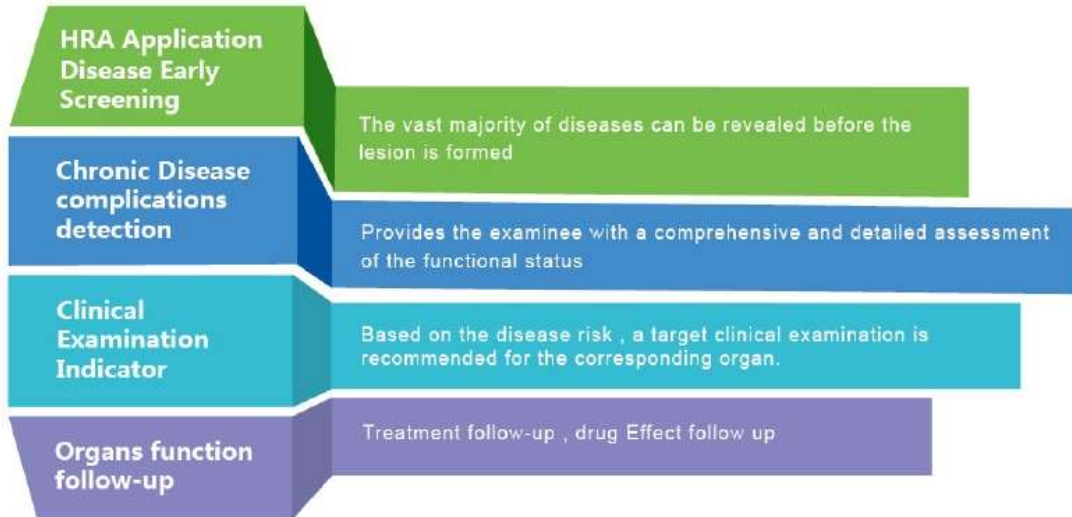
60% disease mortality can be avoided through changing lifestyle. Early disease screening and early disease intervention are the most effective protection of healthy living.

The Difference from others Conventional Equipments

HRA	Conventional Examination
<ul style="list-style-type: none"> HRA system is able to deliver a full analytical report on the detailed functioning of the complete body with organs and systems. 	<ul style="list-style-type: none"> Only detects existed critical symptoms, which cannot help the doctor to find the real pathogeny.
<ul style="list-style-type: none"> All disorders in the organs and systems are highlighted, suggesting sensitivity to possible future pathologies and actions to be taken even before external symptoms have yet appeared. 	<ul style="list-style-type: none"> Only indicates critical diseases, and perhaps possible symptoms that are generated, with organ hyperfunction and miopragia
<ul style="list-style-type: none"> The body parameters (neurotransmitter, hormone levels, pH, etc.) provided by HRA system are substantial data for the doctor to take immediate corrective preventions. 	<ul style="list-style-type: none"> With conventional examination's incomprehensive measurements results, doctor cannot track the physiological status for an accurate.
<ul style="list-style-type: none"> HRA generates reconstituted color 3D images in its unique easy-to-read way, and delivers analysis of the risks related to the current condition of human body. 	<ul style="list-style-type: none"> Only printing out the measurements results as a set of hard-to-read raw data and graphics which require significant time of a trained person for the analysis.



System Application



Who is using



1. For Inpatient Application	1. Sport Rehabilitation	1. Community Service Center
2. For Outpatients in Hospitals	2. The nuclear Industry	2. Large-scale Enterprise
3. For Group Physical Examination Projects	3. Astronaut	3. Health Management Center
4. For Personalized Customized Medical Examination	4. Athlete Training Center	4. Nursing Institution for the Aged
	5. Athlete Health Assessment	5. Insurance Company
		6. Pharmaceutical/health products company

