




Invest Today. Thrive Tomorrow.



EduVitality

 +515-664-6549

 www.voleskyconsulting.com

 kristy@voleskyconsulting.com





Table of Contents.

Purpose	03
What is EduVitality?	03
The Gap Between Education and Community	04
Pillar 1: Learning-Powered Communities	05
Pillar 2: Connected & Creative Economies	06
Pillar 3: Culture, Belonging & Place	07
What is the Cost of Doing Nothing?	08
Communities Can't Wait - It's Time to Act!.....	09
Opportunity: A Call to Action	11
What's Next? Simple Steps for Local Impact	12
How EduVitality Helps Your Community	13
EduVitality Assessment	14

EduVitality

Purpose

EduVitality is built on the urgent reality that education and communities are inextricably linked—and without prioritizing their alignment, both suffer. The disconnect between the two is damaging: when communities struggle, schools and businesses falter, and when schools fail to thrive, communities stagnate. This is not just a challenge for education or communities alone—it’s a challenge for everyone. We must act now to bridge this divide.

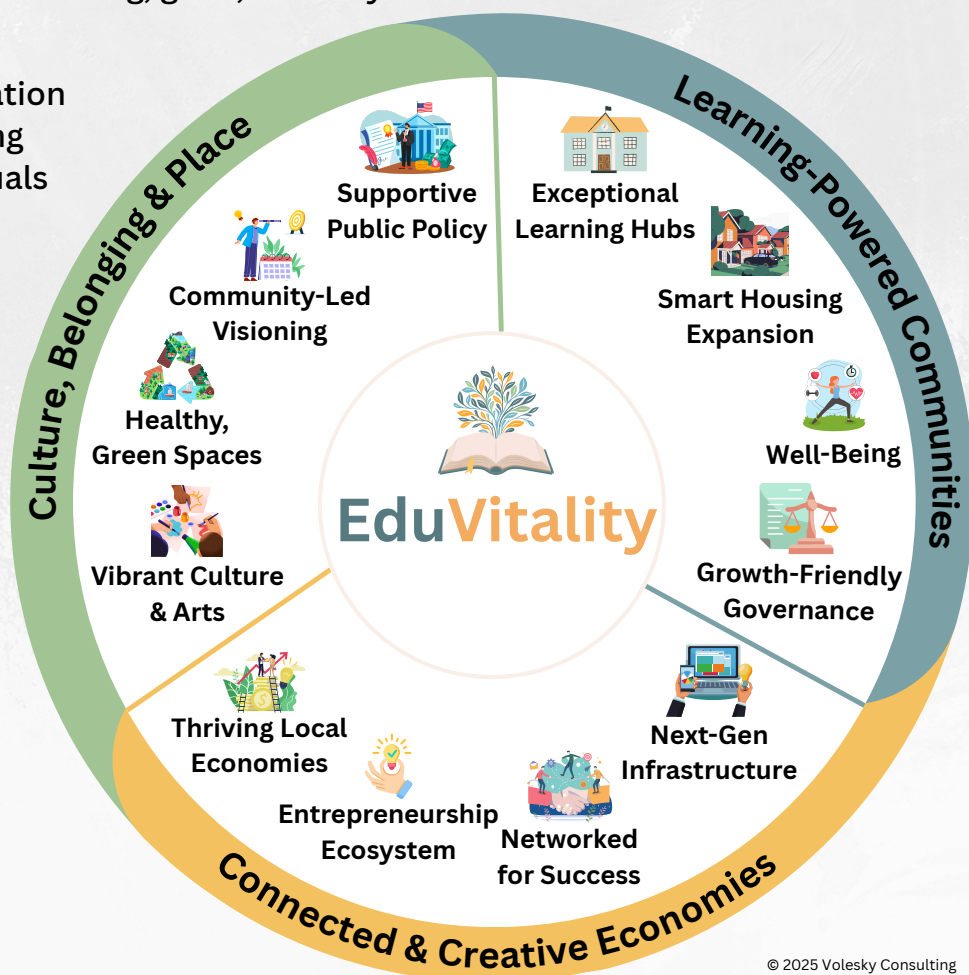
This playbook provides a framework to help communities realign their educational goals with local needs, ensuring that both education systems and communities grow together, creating vibrant, sustainable environments for generations to come.

What is EduVitality?

EduVitality is a framework for transforming communities through bold, future-focused action. EduVitality helps communities align education and shared purpose—building places where people belong, grow, and stay.

EduVitality empowers communities to bridge education with collective goals, fostering environments where individuals not only thrive but also feel deeply connected.

Through strategic partnerships, local values are aligned with educational initiatives, blurring the lines of where and how learning occurs. This creates vibrant communities where people are engaged and invested in long-term growth.



© 2025 Volesky Consulting

The Gap Between Education and Community

Current Gaps:

- **Inconsistent Contributions to Schools:** Community donations to schools and colleges often come in the form of one-time, disconnected gifts that don't align with long-term educational needs or community goals. Instead of fostering strategic growth, these efforts can lack sustainability and miss opportunities to address deeper challenges.
- **Short-Sighted Service Projects:** Volunteer or service projects are often well-intentioned but can be disconnected from actual community needs. For example, projects may focus on quick fixes without addressing root causes or engaging students in meaningful ways that lead to lasting impact. Many of these projects lack sustainability and end shortly after they begin.
- **Failure to Connect with Talented Youth:** Many communities struggle to retain or bring back local talent after graduation. Without intentional strategies to connect students to career opportunities or local development initiatives, talent often leaves and doesn't return, diminishing the community's future potential.
- **Lack of Community Pride in Education:** Students may not see the connection between their educational journey and the future of their community. Without fostering a sense of belonging or pride in local culture, it's difficult to inspire students to invest in their community or remain engaged after graduation.
- **Lack of Investment in Student Opportunities:** Too often, communities fail to recognize the potential for students to become future business leaders or entrepreneurs. Without showcasing the possibilities for local innovation and leadership, many students leave seeking opportunities elsewhere, while the community misses out on their talents.



What if education could be a key driver for community transformation?



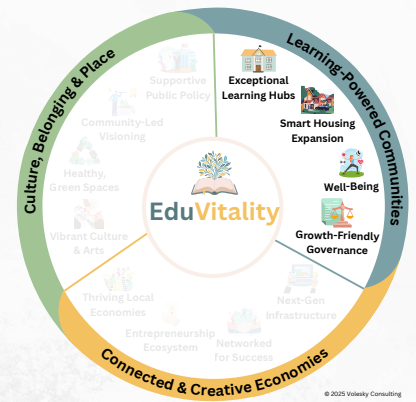
What if local goals and education could work in tandem to create thriving communities?

We can connect the power of education to the collective vision of a community!

In this playbook, we explore three interconnected pillars that can help communities overcome these challenges and create thriving, sustainable environments.

Learning-Powered Communities

Where education becomes a launchpad—not a bottleneck—for opportunity.



✓ **Exceptional Learning Hubs:**



Schools, colleges, and learning centers are positioned as engines of innovation, not institutions stuck in the past.

Value: Communities need agile, responsive systems that prepare youth for the real world—not just test scores.

✓ **Smart Housing Expansion:**



Affordable, stable housing tied to school access and educational equity, create opportunities for community growth.

Value: Without housing expansion, communities cannot grow. Housing policy is educational policy, and both are critical for building sustainable, thriving communities.

✓ **Well-Being:**



A holistic focus on physical and mental health, community access to quality health care, and a safe, healthy environment—including clean water, air, and public infrastructure.

Value: Without access to local health care and a healthy environment, people struggle to thrive and begin looking to other communities that better support their well-being.

✓ **Growth-Friendly Governance:**

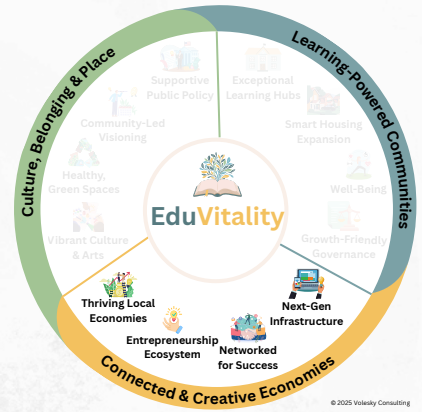


Local policies that make it easier—not harder—for innovation, equity, and sustainability to flourish.

Value: Outdated regulations and fragmented systems block progress when we need bold, united action.

Connected & Creative Economies

Local strength, driven by local talent, with room for everyone to contribute.



✓ **Thriving Local Economies:**



Economic ecosystems that harness the potential of skilled, homegrown talent.

Value: When local graduates leave for opportunity elsewhere, communities lose their future.

✓ **Entrepreneurship Ecosystem:**



Support structures—funding, mentorship, space—that help local innovators launch and scale.

Value: Entrepreneurs drive job creation, creativity, and local resilience—but only when they are empowered.

✓ **Networked for Success:**



Intentional cross-sector partnerships that share knowledge, networks, and opportunity.

Value: Disconnected efforts limit impact. Strong social capital and collaboration accelerate progress by linking people, ideas, and resources.

✓ **Next-Gen Infrastructure:**

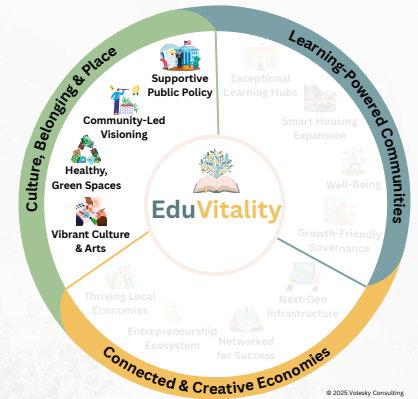


Modern access to broadband, mobility, and technology for every resident.

Value: Without reliable infrastructure—digital, physical, and operational—schools, businesses, and communities cannot thrive. It underpins access, equity, and long-term success in every sector.

Culture, Belonging & Place

The heart and soul of a community—and the glue that holds it together.



✓ **Vibrant Culture & Arts:**



Creative expression through murals, music, festivals, and shared local histories that reflect community identity.

Value: Culture builds pride, connection, and investment in the community. It's how communities remain vibrant and deeply rooted.

✓ **Healthy, Green Spaces:**



Parks, public spaces, and community areas designed with youth and families at the center, offering beautiful, accessible places for recreation, connection, and healthy living.

Value: These spaces foster community engagement, promote environmental sustainability, and enhance the quality of life.

✓ **Community-Led Visioning:**



Planning that actively includes youth voices and resident leadership, ensuring collaborative decision-making, rather than top-down directives.

Value: When people shape their community, they stay in it, invest in it, and grow with it. By involving youth and residents in the planning process, we ensure a sense of ownership and long-term commitment.

✓ **Supportive Public Policy:**



Public funding that reflects local priorities and unlocks grassroots innovation.

Value: If we don't fund what we value, we lose it.

What is the Cost of Doing Nothing?

The cost of inaction in aligning education and community is not just a missed opportunity—it's a future that becomes more difficult to recover. Communities and schools are intrinsically linked, and when one suffers, the other does as well. If we continue to neglect the intersection between education and community, we risk destabilizing both, making it harder to rebuild once that foundation starts to crumble. The cost of doing nothing is a burden that grows over time and ultimately robs our communities of the resources and potential they need to thrive.

The Ripple Effect of Inaction

When education and community are left to operate in silos, the effects are far-reaching and touch every part of a community's life. Consider how these disconnected systems can result in:

- **Talent Drain:** Without education systems aligned to local needs, talented youth and skilled workers often leave in search of opportunity elsewhere. Communities lose their brightest minds and most motivated individuals, making it harder for businesses to thrive.
- **Business Decline:** Businesses struggle to succeed without access to a talented, local workforce. As opportunities dwindle and the local economy weakens, businesses may relocate or shut down, taking away jobs and stability. When communities fail to support both existing employers and emerging entrepreneurs, they miss critical chances to fuel innovation and long-term growth.
- **Community Fragmentation:** When residents don't see their needs being met by schools, colleges, and local systems, frustration grows. People feel disconnected and undervalued, leading to apathy and disengagement, which can further undermine community vitality.
- **Educational Struggles:** Schools and colleges—cornerstones of a thriving community—suffer when there's a lack of support, alignment, and resources. As student engagement declines and enrollment drops, maintaining quality education becomes harder. Without a strong connection to community needs, some institutions risk closure altogether.



Communities Can't Wait - It's Time to Act!

These abstract issues translate into tangible, real-world consequences. Take a look at some scenarios that show the true cost of doing nothing. Do any of these common examples sound familiar to you?

Fading, Not Gone: Rural Communities at a Crossroads



In a rural community, the local school's enrollment has been declining for years. Businesses can't find qualified workers, and young people leave for urban areas in search of better opportunities. As school funding drops, closure becomes a real possibility—deepening the talent drain.

Without strong education pathways or investment in local youth, the town becomes less appealing to entrepreneurs and new residents. Families must travel farther for basic services like healthcare, deterring others from moving in. Vacant buildings accumulate, green spaces fall into disrepair, and the heart of the community begins to fade. With fewer families choosing to stay, the town faces a slow erosion—economically, socially, and culturally.

But decline isn't the only path forward. With intentional investment in youth, education, and entrepreneurship, this rural town can revive itself. Local schools can once again become community hubs, businesses can find the talent they need to grow, and new families can see this place as full of possibility.

Stuck and Searching: Reconnecting Community Purpose



In a mid-sized city, disconnected efforts between schools and local organizations result in an isolated youth population. Students don't have the support they need to stay engaged with schoolwork, and local businesses fail to offer internship or apprenticeship opportunities, limiting pathways to success. As a result, youth feel disconnected and disheartened, and the cycle of disengagement becomes harder to break.

Over time, the city struggles to attract new businesses and investment because it lacks the educated, motivated workforce that companies seek. Empty storefronts and vacant lots begin to take over the downtown, and green spaces once intended for community engagement turn into unused areas. Entrepreneurs looking to start businesses are discouraged by the lack of infrastructure, both physical and educational, that would help their ventures thrive.

However, when education, workforce, and civic partners come together with a shared vision, this city can become a place of transformation. With aligned strategies and purposeful collaboration, it can create clear pathways for youth, vibrant opportunities for entrepreneurs, and renewed pride in public spaces.

Continued: Tipping Point: What's at Stake When We Don't Act

Urban Potential, Paused by Design



In a diverse urban neighborhood with a rich cultural history, schools and local businesses struggle to connect in meaningful ways. Although the area has much potential, the disconnect between educational systems and economic

development has limited opportunities for students and young professionals. Without strong partnerships, local youth often find it difficult to access pathways that lead to sustainable careers. Meanwhile, businesses looking to grow or open in the area find it challenging to recruit local talent, leading to slower economic progress.

Vacant storefronts and underutilized spaces become a visual reminder of missed opportunities for investment and development. Local parks and community areas, once the heart of neighborhood engagement, are left underfunded and not as vibrant as they could be, leading to a loss of community pride and connection. The energy of the neighborhood, while still present, is stifled by these unmet needs.

However, the opportunity remains for transformation. With a renewed focus on linking education, economic growth, and community engagement, this neighborhood can thrive once again. By aligning local schools, businesses, and residents around shared goals, it can become a place where entrepreneurs find fertile ground, vacant buildings become spaces for innovation, and public spaces flourish as centers of community life.

Suburbia's Blind Spot: A Generational Risk



In a growing suburban community, new housing developments and thriving businesses give the appearance of long-term stability. But beneath the surface, cracks begin to form. While families move in, there's little intentional investment in connecting students to the local economy or community life.

Young people see their town as a place to grow up—not a place to stay. Schools and colleges offer quality academics, but without clear pathways to local careers, leadership, or entrepreneurship, students look elsewhere for a future. Meanwhile, community leaders assume the growth will last—until workforce shortages emerge, civic engagement declines, and businesses struggle to find local talent. What was once seen as a “family-friendly” community becomes one that fails to retain its next generation—risking a future built on past success rather than present strategy.

Yet, with proactive strategies, this suburb can secure its future. By elevating student voice, expanding collaborative learning initiatives alongside educational institutions, and creating inclusive pathways to success, the community can shift from reactive to resilient—one that attracts talent, fosters belonging, and grows from within.

Opportunity: A Call to Action

The time to act is **now**. Communities that are **proactive** in aligning education with local goals will have a **competitive advantage**, attracting talent, businesses, and investment. Communities that **fail** to act **will struggle** to maintain relevance, losing both human capital and economic potential. **By investing in education and community collaboration today, we can avoid the painful consequences of inaction tomorrow.** Now is the moment to take the necessary steps to build a community where education and local values thrive together.

Act Now:

Communities aligning education with local goals will thrive, attracting talent, businesses, and investment.

Fail to Act:

Those that neglect to align education with community goals will struggle, losing human capital and economic potential.

Invest Today:

By prioritizing education and community integration, we can avoid the painful consequences of inaction tomorrow.

Build for Tomorrow:

Now is the time to build a community where education and local values thrive together.

What's Next? Simple Steps for Local Impact.

1

Assess Your Community's Needs

Start by using the **EduVitality Assessment** to identify gaps in your community's current approach. With 12 focused questions—one for each component of the EduVitality framework—you'll gain insight into areas that need immediate attention. This tool will help you understand where to focus your efforts for the greatest impact. The assessment is found at the end of this playbook or on **voleskyconsulting.com**.

2

Engage Stakeholders

Collaboration is key! Bring together local schools, colleges, businesses, community leaders, and residents to discuss the vision for your community. Be sure to include student voices in the conversation—after all, they are the future of your community. Consider how each group can contribute to shared goals.

3

Prioritize Key Pillars

Choose 1-2 pillars from the EduVitality framework that you believe will have the greatest impact on your community's future. Whether it's focusing on "Learning-Powered Communities" or fostering "Connected & Creative Economies," these pillars will serve as the foundation for future action.

4

Develop a Strategic Plan

Work with partners to create a roadmap for aligning education, business, and community efforts. This plan should be clear, actionable, and tailored to your community's specific needs. Keep it focused on short-term wins as well as long-term goals.

5

Take Bold Action

Begin with small but impactful steps. Whether it's forming a local task force, creating new partnerships, or launching pilot programs, ensure your community's leaders are taking action toward the shared vision. Celebrate every step forward, no matter how small.



How EduVitality Helps Your Community.

(and Why You Need a Partner)



Achieving lasting impact takes more than good intentions. It requires alignment, capacity, and the right guide to move from talk to transformation. That's where EduVitality—and **Volesky Consulting**—comes in.

Volesky Consulting helps communities:

- ✓ **Bridge the gap between education and business** by translating goals, language, and strategies to create aligned, high-impact solutions.
- ✓ **Align schools, businesses, and community leaders** around a shared vision to drive meaningful, measurable progress.
- ✓ **Access innovative partnership models** and real-world strategies that turn ideas into sustainable systems.
- ✓ **Move from planning to action—faster** with expert guidance from Kristy Volesky, whose 20+ years of experience across local, state, and national systems in both education and business fuels breakthrough outcomes.

**What once felt out of reach becomes possible
and sustainable with the right support.**



Ready to Move from Ideas to Action?

You have seen what is possible—and what is at stake. Whether your next step is a conversation, a community meeting, or a formal planning process, don't let this moment pass. Progress doesn't require perfection—it starts with **intention**.



Action grows where alignment lives.



Let's build that alignment together.

Let's Connect.



If you're ready to move forward—or just want to explore what this could look like for your school, college, community, or organization—I would love to hear from you.

Kristy Volesky
voleskyconsulting.com
kristy@voleskyconsulting.com

EduVitality Assessment

Directions:

As a team, rate each area by selecting where your community currently stands.

- **Thriving** - This area is strong and contributing to positive outcomes.
- **Surviving** - Making progress but needs strengthening.
- **Struggling** - This area is holding your community back.



Learning-Powered Communities

Where education becomes a launchpad—not a bottleneck—for opportunity.

1. Exceptional Learning Hubs

Are your schools and colleges fostering innovation and modern instructional models, or relying on outdated approaches?

- Thriving ● Surviving ● Struggling

2. Smart Housing Expansion

Can families access affordable, stable housing near high-quality schools, or are opportunities increasingly out of reach?

- Thriving ● Surviving ● Struggling

3. Well-Being

Are you investing in community-wide well-being—including health care access and a healthy environment—or contributing to the conditions that push people away?

- Thriving ● Surviving ● Struggling

4. Growth-Friendly Governance

Are local policies fostering sustainable growth and innovation, or creating roadblocks to progress?

- Thriving ● Surviving ● Struggling

Connected & Creative Economies

Local strength, driven by local talent, with room for everyone to contribute.

5. Thriving Local Economies

Are you nurturing homegrown talent and retaining it, or watching it leave for opportunities elsewhere?



Thriving



Surviving



Struggling

6. Entrepreneurship Ecosystem

Do local entrepreneurs have the support they need to grow and thrive, or is innovation being stifled?



Thriving



Surviving



Struggling

7. Networked for Success

Are you building partnerships that connect education, business, and community, or operating in silos?



Thriving



Surviving



Struggling

8. Next-Gen Infrastructure

Is your community equipped with strong internet, devices, and infrastructure to support education, jobs, and daily life—or are tech gaps holding you back?



Thriving



Surviving



Struggling

Culture, Belonging & Place

The heart and soul of a community—and the glue that holds it together.

9. Vibrant Culture & Arts

Is your community investing in creative expression—through murals, music, festivals—or allowing the cultural heartbeat to fade?



Thriving



Surviving



Struggling

10. Healthy, Green Spaces

Are your public spaces designed to nurture connection and well-being, or falling into neglect?

● Thriving
 ● Surviving
 ● Struggling

11. Community-Led Visioning

Are young people and residents shaping the community's future, or being left out and pushed away?

● Thriving
 ● Surviving
 ● Struggling

12. Supportive Public Policy

Are funding decisions aligned with local priorities, or reinforcing outdated systems?

● Thriving
 ● Surviving
 ● Struggling

Now What? Turning Insight into Action.

If your community scored “Struggling” or “Surviving” in multiple areas, don’t be discouraged—awareness is the first step toward meaningful change. **Every thriving community began with a choice: to see the gaps clearly and do something about them.**

These results aren’t a judgment—they’re a starting point. They help you identify where focus is needed most and where small steps can lead to big transformation.

Let’s Build What Comes Next.

Congratulations on completing your assessment. You have taken an important step toward aligning education, economy, and community well-being. Now it's time to move forward with intention.

Whether your goals involve rethinking partnerships, investing in local talent, or creating systems that better serve your people, Volesky Consulting is here to help you turn insight into action.

Volesky Consulting offers:

- Customized strategic planning.
- Community goal-setting and alignment with education.
- Collaborative implementation support.
- Tailored workshops and presentations.



Reach out today to schedule a consultation and start building the future your community deserves.
kristy@voleskyconsulting.com