

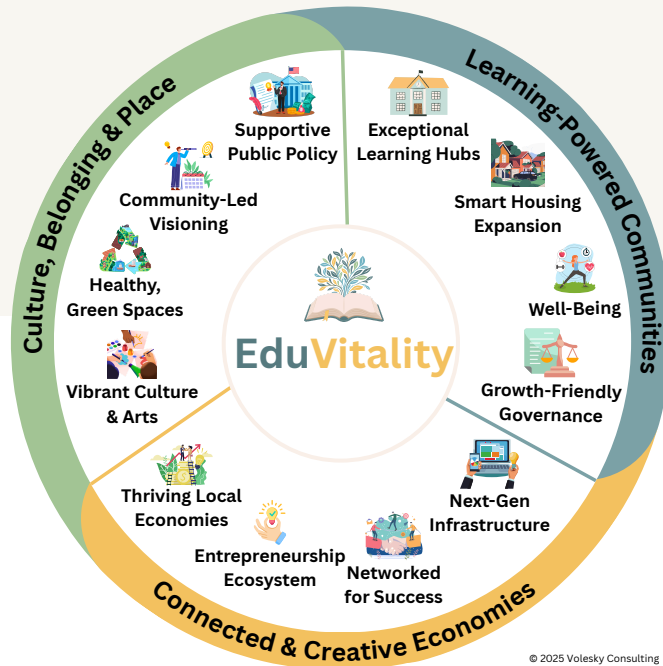
EduVitality

Self-Assessment Tool



Invest Today. Thrive Tomorrow.

INTRODUCTION



Welcome to the EduVitality Community Assessment! This tool is designed to help you evaluate the current state of your community's educational, economic, and cultural systems. It highlights key areas that drive growth, innovation, and community engagement.

By answering these simple questions, you will gain a snapshot of where your community stands in relation to the goals of EduVitality—creating vibrant, thriving communities that are connected to education and built for long-term success.

If you haven't already, review the EduVitality Playbook, found on the [Volesky Consulting website](https://www.voleskyconsulting.com), to understand the full scope of the framework and how these components connect. The playbook will provide a deeper understanding of the vision behind each category and help you align this assessment with your community's unique needs and goals.

Once you complete this assessment, you'll have a clearer picture of your community's strengths and areas that need improvement. From there, the next step is to take action—engage with stakeholders, create an action plan, and start moving your community forward.

EduVitality Assessment

Directions:

As a team, rate each area by selecting where your community currently stands.

- **Thriving** - This area is strong and contributing to positive outcomes.
- **Surviving** - Making progress but needs strengthening.
- **Struggling** - This area is holding your community back.



Learning-Powered Communities

Where education becomes a launchpad—not a bottleneck—for opportunity.

1. Exceptional Learning Hubs

Are your schools and colleges fostering innovation and modern instructional models, or relying on outdated approaches?

- Thriving ● Surviving ● Struggling

2. Smart Housing Expansion

Can families access affordable, stable housing near high-quality schools, or are opportunities increasingly out of reach?

- Thriving ● Surviving ● Struggling

3. Well-Being

Are you investing in community-wide well-being—including health care access and a healthy environment—or contributing to the conditions that push people away?

- Thriving ● Surviving ● Struggling

4. Growth-Friendly Governance

Are local policies fostering sustainable growth and innovation, or creating roadblocks to progress?

- Thriving ● Surviving ● Struggling

Connected & Creative Economies

Local strength, driven by local talent, with room for everyone to contribute.

5. Thriving Local Economies

Are you nurturing homegrown talent and retaining it, or watching it leave for opportunities elsewhere?



Thriving



Surviving



Struggling

6. Entrepreneurship Ecosystem

Do local entrepreneurs have the support they need to grow and thrive, or is innovation being stifled?



Thriving



Surviving



Struggling

7. Networked for Success

Are you building partnerships that connect education, business, and community, or operating in silos?



Thriving



Surviving



Struggling

8. Next-Gen Infrastructure

Is your community equipped with strong internet, devices, and infrastructure to support education, jobs, and daily life—or are tech gaps holding you back?



Thriving



Surviving



Struggling

Culture, Belonging & Place

The heart and soul of a community—and the glue that holds it together.

9. Vibrant Culture & Arts

Is your community investing in creative expression—through murals, music, festivals—or allowing the cultural heartbeat to fade?



Thriving



Surviving



Struggling

10. Healthy, Green Spaces

Are your public spaces designed to nurture connection and well-being, or falling into neglect?



Thriving



Surviving






Struggling

EduVitality Assessment




11. Community-Led Visioning

Are young people and residents shaping the community's future, or being left out and pushed away?

 Thriving  Surviving  Struggling

12. Supportive Public Policy

Are funding decisions aligned with local priorities, or reinforcing outdated systems?

 Thriving  Surviving  Struggling

Now What? Turning Insight into Action.

If your community scored “Struggling” or “Surviving” in multiple areas, don’t be discouraged—awareness is the first step toward meaningful change. **Every thriving community began with a choice: to see the gaps clearly and do something about them.**

These results aren’t a judgment—they’re a starting point. They help you identify where focus is needed most and where small steps can lead to big transformation.

Let’s Build What Comes Next.

Congratulations on completing your assessment. You have taken an important step toward aligning education, economy, and community well-being. Now it's time to move forward with intention.

Whether your goals involve rethinking partnerships, investing in local talent, or creating systems that better serve your people, Volesky Consulting is here to help you turn insight into action.

Volesky Consulting offers:

- Customized strategic planning.
- Community goal-setting and alignment with education.
- Collaborative implementation support.
- Tailored workshops and presentations.

With 20+ years of experience working with schools, colleges, businesses, and community partners, I know how to help communities move from stuck to thriving. Let’s chart a path forward together—one rooted in shared vision and lasting impact.



Reach out today to schedule a consultation and start building the future your community deserves.

kristy@voleskyconsulting.com

voleskyconsulting.com