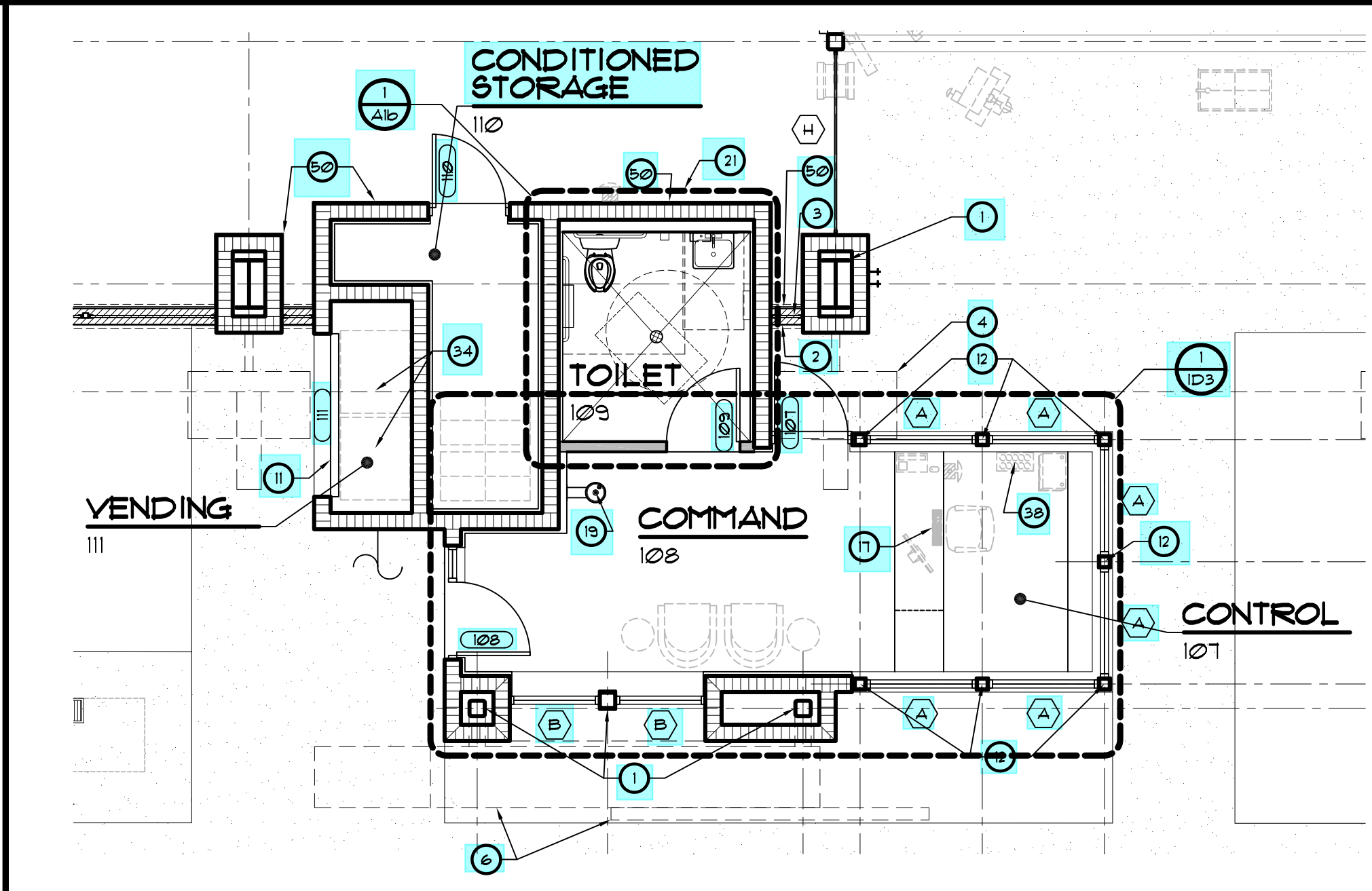


SAMPLE



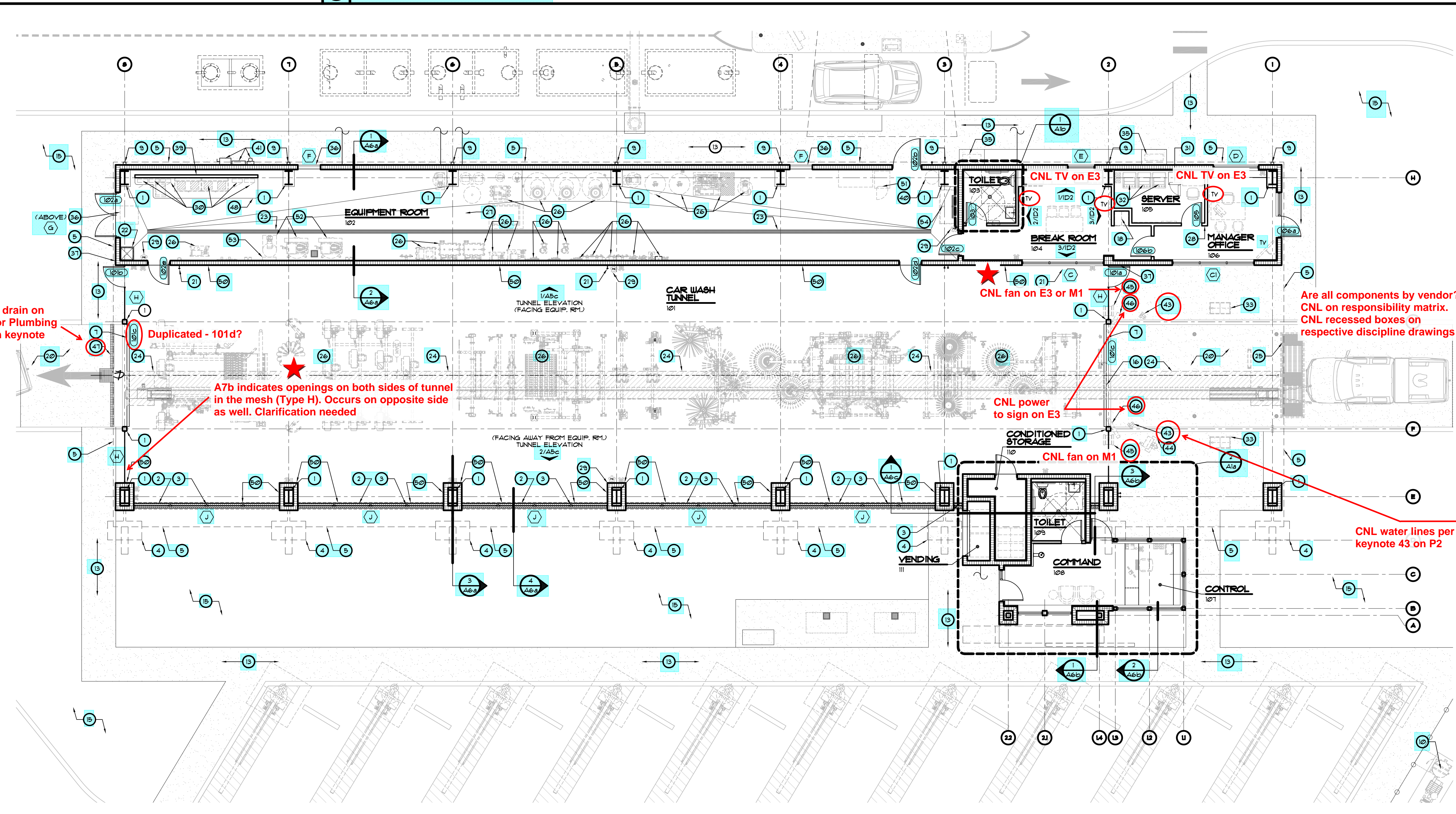
2 FLOOR PLAN - KNUCKLE
SCALE: 1/8" = 1'-0"

- ### GENERAL NOTES
1. PRE-TREAT SOILS AGAINST SUB-TERRANEAN TERMITES PER SECTION 1916 OF THE FLORIDA BUILDING CODE. A CERTIFICATE OF COMPLIANCE SHALL BE ISSUED TO THE BUILDING DEPARTMENT BY THE LICENSED PEST CONTROL COMPANY THAT CONTAINS THE FOLLOWING STATEMENT "THE BUILDING HAS RECEIVED A COMPLETE TREATMENT FOR THE PREVENTION OF SUB-TERRANEAN TERMITES TREATMENT IS IN ACCORDANCE WITH THE RULES AND LAWS ESTABLISHED BY THE FLORIDA DEPARTMENT OF AGRICULTURE AND CONSUMER SERVICES"
 2. CAULK OR SEAL TO LIMIT INFILTRATION FOR ALL EXTERIOR JOINTS AROUND WINDOWS, DOOR FRAMES, OPENINGS FOR ELECTRICAL AND PLUMBING AND ALL OTHER PENETRATIONS OF THE BUILDING ENVELOPE.
 3. REFER TO FINISH SCHEDULE FOR ALL FINISHES - TYPICAL
 4. ALL GLAZING (GLASS) SUBJECT TO HUMAN IMPACT OR IN A HAZARDOUS LOCATION SHALL BE SAFETY GLAZED (TEMPERED) PER THE REQUIREMENTS OF THE FLORIDA BUILDING CODE.
 5. ALL SIGNAGE SHALL BE IN ACCORDANCE WITH THE FLORIDA BUILDING CODE.
 6. GENERAL CONTRACTOR TO VERIFY ALL DOOR FRAME WIDTHS, COORDINATE WITH WALL THICKNESS
 7. PRIOR TO START OF FRAMING, GENERAL CONTRACTOR SHALL VERIFY ALL FRAMING REQUIREMENTS FOR MECHANICAL EQUIPMENT, TECHNICAL CHASES, PLENUM CABINETS AND OTHER CONSTRUCTION ELEMENTS WITHIN THIS BUILDING NOT SPECIFICALLY DETAILED IN THESE CONSTRUCTION DOCUMENTS.
 8. ALL CONDUITS SHALL BE CONCEALED FROM PUBLIC VIEW - RUN CONDUITS INSIDE OF TUBE STEEL AND CORNERS OF WIDE FLANGE - TYPICAL
 9. CONTRACTOR SHALL ALSO REFERENCE OWNER PROVIDED LOW VOLTAGE PLANS FOR DATA DROPS AND ADDITIONAL LOW VOLTAGE INFORMATION.
 10. CONTRACTOR SHALL ALSO REFERENCE OWNER PROVIDED SECURITY ACCESS, CCTV AND CAMERA PLANS FOR ADDITIONAL INFORMATION.
 11. G.C. TO PROVIDE RUBBER BLOCKS UNDERNEATH ALL EQUIPMENT LOCATED IN EQUIPMENT ROOM

- ### WALL LEGEND
- DOOR SYSTEM - REFER TO DOOR SCHEDULE
 - WINDOW SYSTEM - REFER TO WINDOW SCHEDULE
 - 3-5/8" MTL STUD FRAMING WITH 1/2" GUSB EACH SIDE
 - 8" x 8" x 16" CMU STACKED BOND - PAINTED, AS SCHEDULED, SEE STRUCTURAL FOR REINFORCEMENT REQUIREMENTS
 - 8" x 8" x 16" CMU STACKED BOND WITH 1" RIGID INSULATION, 1 x 4 Furring STRIPS, 1/2" GUSB WHERE SHOWN ON PLANS - PAINTED, AS SCHEDULED, SEE STRUCTURAL FOR REINFORCEMENT REQUIREMENTS

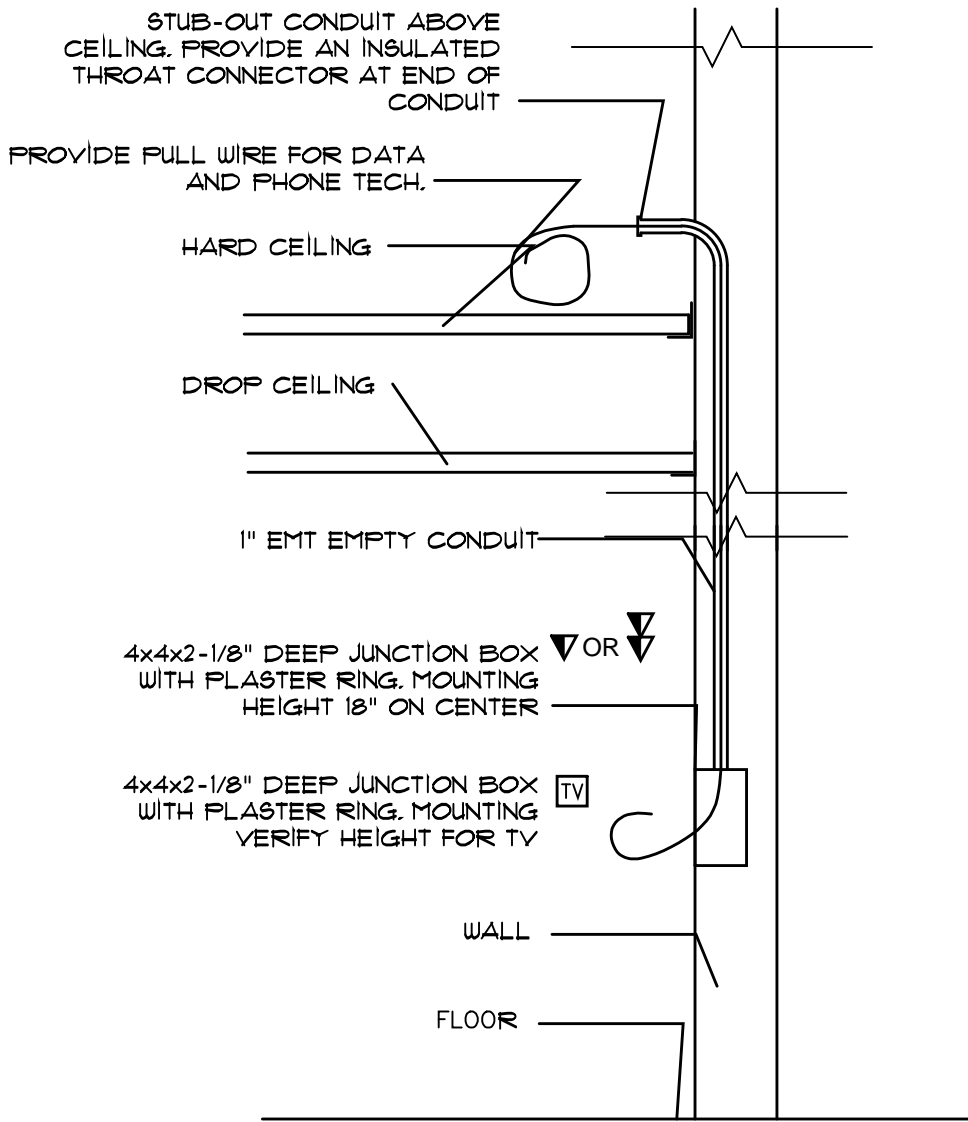
- ### KEYED NOTES
1. PRE-ENGINEERED STRUCTURAL FRAME - TYPICAL - REFER TO STRUCTURAL DRAWINGS - CONTRACTOR TO SUBMIT SIGNED AND SEALED SHOP DRAWINGS FOR APPROVAL
 2. 8" x 8" x 16" CMU STACKED BOND LOW WALL - PAINTED, AS SCHEDULED, SEE STRUCTURAL FOR REINFORCEMENT REQUIREMENTS
 3. MANICHOLO'S MESH SCREEN DESIGN - GALVANIZED STEEL POWDER COATED WITH CUSTOM FABRICATED STEEL PAINTED TUBE FRAME AS SHOWN - BY OTHERS
 4. SQUARE PANEL ELEMENT ABOVE, PRE-PAINTED STEEL SHEET (60" x 60") x 1/4" THICK, 1/4" STEEL SUPPORT BRACKET - SEE DETAIL 4/A6C IR - 2/A6C
 5. ROOF OVERHANG ABOVE
 6. CURVED MESH SCREEN / STEEL TUBE FRAME AND BUILDING SIGNAGE ABOVE - BY VENDOR, MESH OF MANICHOLO'S OR SIMILAR, ROUND HOLE DIA. TO BE DETERMINED WITH BACK LIGHTING WITH 3 1/2" SPACING ØØ32 GA - CLEAR ANODIZED FINISHED ALUMINUM, TYPE 5052-H32 SHEET WITH CUSTOM FABRICATED ALUMINUM SUBFRAME, FASTENED TO STEEL FRAME PER STRUCTURAL DRAWINGS, SEPARATE ALL DISSIMILAR METALS WITH NEOPRENE TO AVOID GALVANIC CORROSION.
 7. FACE-MOUNTED, MANUAL, NON-INSULATED OVERHEAD GALV. STEEL ROLL-DOWN SERVICE BASIS OF DESIGN OVERHEAD DOOR MODEL 10, F-265 SLAB, STANDARD WHITE FINISH - SEE DOOR SCHEDULE - CUT RAILING TO ALLOW FOR DOOR TO FULLY CLOSE, COIL DOOR FRAME SHALL BE PRIME AND PAINTED PER SPEC.
 8. MASONRY CONTROL JOINT - SEE STRUCTURAL DRAWINGS
 9. ROOF DOWNSPOUT TO CONNECT TO UNDERGROUND STORMWATER SYSTEM - SEE ARCHITECTURAL SITE PLAN AND CIVIL DRAWINGS
 10. VACUUM SYSTEM MOTORS - REFER TO ELECTRICAL AND CARWASH EQUIPMENT VENDOR
 11. 6'-8" WIDE 7'-6" height AWW A7a (7'-4")
 12. HSS COLUMN (SEE STRUCTURAL DRAWINGS) WITH CLEAR ANODIZED ALUMINUM BREAK METAL COVER - SEE WINDOW DETAILS
 13. CONCRETE WALK - SEE ARCHITECTURAL SITE PLAN
 14. METAL GUARD RAIL
 15. LANDSCAPE AREA - SEE LANDSCAPE DRAWINGS
 16. INTERRUPT CONVEYOR RAILING WHERE OVERHEAD DOOR INTERSECTS TO ALLOW FOR CONTINUOUS CLOSURE
 17. P.O.S. - BY OWNER, PROVIDE DATA TO LOCATION - SEE ELECTRICAL DRAWINGS
 18. METAL LOCKERS - LYON FIVE TIER 15" WIDE x 15" DEEP x 66" TALL, DOVE GRAY COLOR, Z-BASE AND METAL TRIM FOR BUILT-IN INSTALLATION - BY OWNER
 19. ADA HI-LOW ELECTRIC WATER COOLER - SEE SHEET 6/1D3
 20. CONCRETE DRIVEWAY WITH EPOXY COATING FINISH - SEE CIVIL PLANS
 21. HOSE BIB - SEE PLUMBING PLANS
 22. MOP SINK - SEE PLUMBING DRAWINGS
 23. TRENCH DRAIN WITH METAL GRATING - SEE PLUMBING DRAWINGS
 24. CONVEYOR TRENCH - SEE STRUCTURAL DRAWINGS
 25. CORRELATOR PIT - SEE STRUCTURAL DRAWINGS
 26. CAR WASH EQUIPMENT - BY VENDOR
 27. TRASH PIT - SEE STRUCTURAL DRAWINGS
 28. METAL STUD PARTITION
 29. WALL MOUNTED FIRE EXTINGUISHER (PROVIDE CATO PLASTIC EXTERIOR CABINET - MODEL CHFC-10 WHERE SHOWN INSIDE OF TUNNEL)
 30. ELECTRICAL EQUIPMENT - SEE ELECTRICAL DRAWINGS
 31. SAFE - BY OWNER
 32. SERVER RACK - BY OWNER
 33. BUG PREP SINK (BY VENDOR), PROVIDE LIQUID SOLUTION CONNECTION BACK TO EQUIPMENT ROOM PUMP, PLUMBING CONNECTIONS W/ SHUTOFF VALVES IN RECESSED FLOOR BOX SET FLUSH WITH TOP OF SLAB - PROVIDE DRAIN TO CONVEYOR TRENCH - PROVIDE POWER FOR ELECTRONIC PLUMBING VALVES IN RECESSED FLOOR BOX SET FLUSH WITH TOP OF SLAB - PROVIDE RECESSED J-BOX W/ TRAFFIC RATED COVER
 34. VENDING MACHINES - BY OWNER (PROVIDE FLAT SLAB UNDERNEATH MACHINES - SLOPE REMAINING SLAB TOWARDS GATE TO EXTERIOR)
 35. CONDENSING UNIT - SEE MECHANICAL DRAWINGS
 36. WALL MOUNTED LOUVERED VENT - SEE EXTERIOR ELEVATIONS AND MECHANICAL PLANS
 37. GATE HOLD OPEN - BY GATE MANUFACTURER
 38. UNDERGROUND CONDUITS TO SERVER - SEE ELECTRICAL DRAWINGS
 39. PROVIDE UNISTRUT SYSTEM TO ALLOW ELECTRICAL EQUIPMENT INSTALLATION WITHOUT CONFLICTING WITH PREMANUFACTURED BUILDING BRACING - TYPICAL
 40. ELECTRICAL WATER HEATER - SEE PLUMBING DWGS.
 41. ELECTRICAL SERVICE - SEE ELECTRICAL DRAWINGS
 42. HIGH PRESSURE HOSE BIB - SEE PLUMBING PLANS
 43. (2) HIGH PRESSURE WATER LINES WITH SHUT OFF TO FUTURE WATER NOZZLES - PROVIDE A RECESSED FLOOR BOX FLUSH WITH TOP OF SLAB.
 44. POWER TO PEDESTAL - SEE ELECTRICAL DRAWINGS
 45. FAN ABOVE WITH POWER - SEE ELECTRICAL DRAWINGS
 46. SIGN WITH POWER - SEE ELECTRICAL DRAWINGS
 47. TRENCH DRAIN AT TUNNEL EXIT - PROVIDE DRAINAGE TO MAIN CONVEYOR TRENCH - SEE STRUCTURAL AND PLUMBING DRAWINGS
 48. 18'-0" W x 3'-0" D x 6" H CONCRETE EQUIPMENT PAD - PROVIDE 12" RADIUS CORNERS
 49. PRE-ENGINEERED CABLE X-BRACING BY PRE-ENGINEERED METAL BUILDING VENDOR
 50. VINYL WALL PANELS ON TUNNEL SIDE OF COLUMNS AND LOW WALL
 51. FUTURE LAUNDRY "DRYER" LOCATION - PROVIDE POWER, VENT & PLUMBING REQUIRED
 52. (3) AIR COMPRESSORS - SUPPLIED/INSTALLED BY GC - ALL CONNECTIONS TO BE INSTALLED BY EQUIPMENT VENDOR (ELECTRICAL, PLUMBING, VENTING TO BE INSTALLED BY GC - IF REQUIRED) PROVIDE (1) FLOOR SINK BETWEEN UNITS - SEE PLUMBING FOR FLOOR SINKS
 53. AIR LINE DRYER (ABOVE COMPRESSORS) - PROVIDE AN 20AMP BREAKER AND 120V OUTLET - INSTALLED/PROVIDED BY GC
 54. UNIMAC WASHING MACHINE W/ FLOOR SINK - (SUPPLIED & INSTALLED - BY OTHERS) - SUPPLY AND DRAIN LINES TO BE INSTALLED BY GC

Abbreviations
AVW = At Variance With
CNL = Could Not Locate
IR = Incorrect Reference



1 FLOOR PLAN
SCALE: 1/8" = 1'-0"

0.030 SQ. FT.



TYPICAL COMMUNICATION
OUTLET DETAIL
NOT TO SCALE

Missing EF-1A, 1B, AHU-2, AHU-3

HVAC EQUIPMENT DISCONNECT AND FEEDER SCHEDULE							
UNIT ID	DESCRIPTION	WIRE AND CONDUIT SIZES	BUS FUSED DISCONNECT	VOLT	PH	MCA	MOCP
CU-1	CONDENSING UNIT	2 #6 AND 1 #10 E.G. IN 1"	60/2/50/3R	208	1		50
AHU-1	AIR HANDLING UNIT	2 #4 AND 1 #10 E.G. IN 1"	60/2/60	208	1		60
EF-2	EXHAUST FAN	2 #10 AND 1 #10 E.G. IN 1/2" INTERLOCK WITH THERMOSTAT	1P 1P RATED DISCONNECT	120	1		15
EF-3	CIRCULATION FAN (1/3HP)	2 #12 AND 1 #12 E.G. IN 1/2" INTERLOCK WITH ON/OFF SWITCH					
EUH	ELECTRICAL WATER HEATER	2 #2 AND 1 #2 E.G. IN 1/2"	30/2/NF/3R	277	1		20

- ELECTRICAL HVAC EQUIPMENT NOTES:
- CONTRACTOR TO FIELD VERIFY EQUIPMENT REQUIREMENTS WITH MECHANICAL AND PLUMBING CONTRACTOR AND OWNER.
 - PROVIDE FUSE PER EQUIPMENT NAME PLATE.

Future dryer per A1a. Keynote 51 indicates to provide power

Missing TV per A1a

Missing TV per A1a

Missing power to hand dryer (Ref A1b)

Missing fan per A1a (Keynote 45)

Missing power to sign per A1a (Keynote 46)

REFER TO SHEETS
E5.1 THRU E5.4, E9.1 THRU E9.7
AND E11.1 THRU E11.3
FOR ADDITIONAL ELECTRICAL
REQUIREMENTS AND WORK

KEYED NOTES

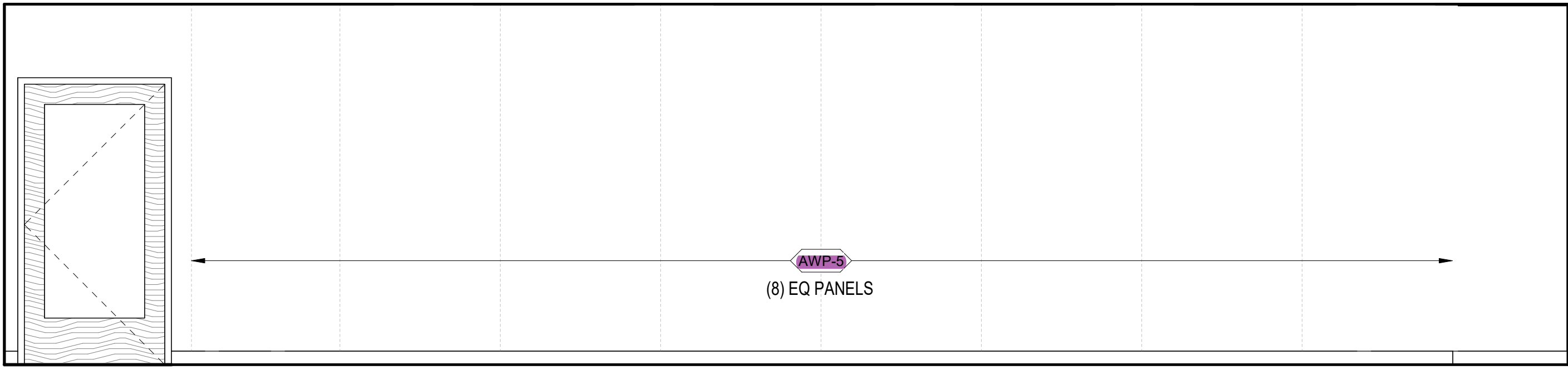
- NOTES:
- PROVIDE A 30"x8"x3/4" THICK PHONE BOARD FOR COMMUNICATION SYSTEM REQUIREMENTS. PAINT WITH 2 COATS OF FIRE RESISTANT PAINT. EXTEND #4 TO BUILDING GROUND SYSTEM. COORDINATE EXACT LOCATION WITH OWNER.
 - EXTEND (2)- 3" SCHEDULE 40 PVC TELEPHONE AND CABLE TV CONDUITS WITH NYLON FULL CORDS FOR USE BY TELEPHONE AND CABLE TV SERVICE PROVIDERS. BURY THE CONDUITS AT 30" BELOW FINISHED GRADE TO THE TOP OF CONDUITS. STUB-OUT THE TELEPHONE CONDUITS AT THE PROPERTY LINE AS DIRECTED BY SERVICE PROVIDERS.
 - PROVIDE A UP GFI GENERAL RECEPTACLE IN EQUIPMENT ROOM. COORDINATE FINAL LOCATION WITH OWNER.
 - COORDINATE FINAL PANELS AND EQUIPMENT LOCATIONS WITH CAR WASHER EQUIPMENT INSTALLER, G.C. AND OWNER. PROVIDE EQUIPMENT CLEARANCE PER NEC.
 - BUILDING MAIN SERVICE PANEL. REFER TO RISER DIAGRAM ON SHEET E-4 FOR REQUIREMENTS. COORDINATE EXACT LOCATION WITH OWNER.
 - PROVIDE A DISCONNECT AND FINAL CONNECTION TO HVAC CONDENSING OR AIR HANDLING UNIT. REFER TO HVAC FEEDER AND DISCONNECT SCHEDULE ON THIS SHEET FOR REQUIREMENTS. COORDINATE EXACT LOCATION WITH MECHANICAL CONTRACTOR.
 - PROVIDE A DISCONNECT AND FINAL CONNECTION TO HVAC EXHAUST FAN. INTERLOCK EXHAUST FAN WITH THERMOSTAT. REFER TO HVAC FEEDER AND DISCONNECT SCHEDULE ON THIS SHEET FOR REQUIREMENTS. COORDINATE EXACT LOCATION AND REQUIREMENTS WITH MECHANICAL CONTRACTOR.
 - LOCATE A MICROWAVE OUTLET IN UPPER CABINET MILLWORK AS DIRECTED BY ARCHITECT AS REQUIRED FOR THE BUILT-IN MICROWAVE. COORDINATE WITH G.C. AND MILLWORK INSTALLER.
 - PROVIDE A RECEPTACLE FOR UNDER COUNTER REFRIGERATOR. COORDINATE WITH G.C. AND MILLWORK INSTALLER.
 - PROVIDE A RECEPTACLE AND DATA OUTLET FOR A MONITOR. COORDINATE WITH G.C. AND OWNER.
 - PROVIDE FINAL CONNECTION TO THE ELECTRIC WATER COOLER. PROVIDE A RECEPTACLE CORD AND CAP AS REQUIRED.
 - PROVIDE A DISCONNECT AND FINAL CONNECTION TO THE ELECTRIC WATER HEATER. REFER TO FEEDER AND DISCONNECT SCHEDULE ON THIS SHEET FOR REQUIREMENTS. COORDINATE EXACT LOCATION WITH PLUMBING CONTRACTOR.
 - PROVIDE A DISCONNECT 30/3/NF/3R AND FINAL CONNECTION TO TOP WASHER EXTRACTOR. COORDINATE EXACT LOCATION WITH EQUIPMENT INSTALLER AND OWNER. PROVIDE DISCONNECT CLEARANCE PER NEC.
 - PROVIDE A DISCONNECT AND FINAL CONNECTION TO CIRCULATION FAN. FAN TO BE CONTROLLED MANUALLY WITH ON/OFF SWITCH. COORDINATE EXACT SWITCH AND FAN LOCATION AND REQUIREMENTS WITH OWNER AND MECHANICAL CONTRACTOR AND DRAWINGS.
 - PROVIDE FINAL CONNECTION TO HAND DRYER. COORDINATE EXACT LOCATION AND REQUIREMENTS WITH OWNER.
 - PROVIDE A RECEPTACLE FOR CHEMICAL DISPENSER. COORDINATE EXACT LOCATION AND REQUIREMENTS WITH OWNER.

GENERAL NOTES

- COORDINATE EXACT DEVICES AND EQUIPMENT LOCATIONS WITH G.C. AND OWNER.
- REFER TO SHOP DRAWINGS FOR EQUIPMENT LOCATION AND ADDITIONAL REQUIREMENTS.

Abbreviations
AVW = At Variance With
CNL = Could Not Locate
IR = Incorrect Reference

SAMPLE



INTERIOR ELEVATION NOTES

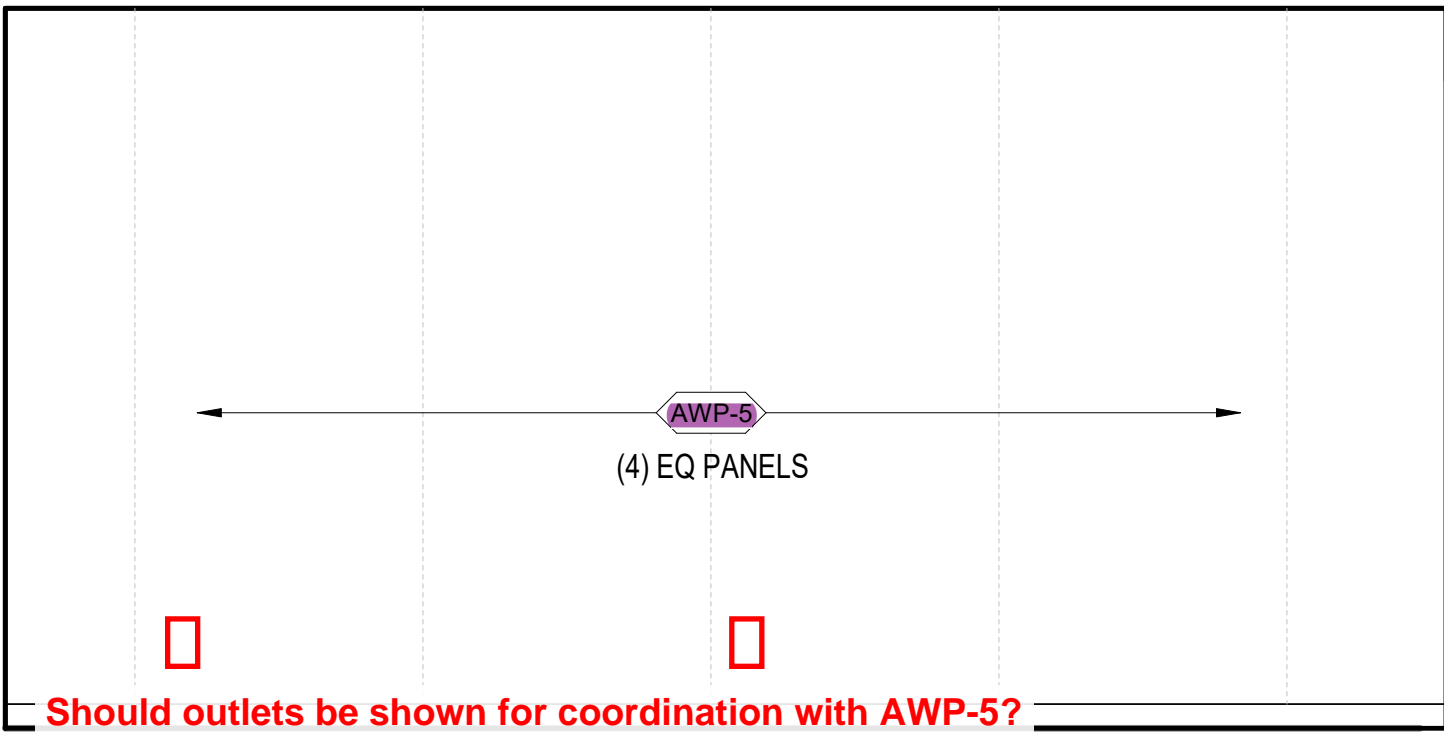
1. REFER TO SPECIFICATION SECTION 09 0600 FOR ADDITIONAL FINISH INFORMATION.
2. REFER TO SPECIFICATION SECTION 01 1013 FOR ALL INTERIOR FINISH SELECTIONS.
3. ALL BASE AND WALL CASEWORK TO BE **PNT-5** UNLESS NOTED OTHERWISE.
4. ALL COUNTERTOPS TO BE **SSM-5** UNLESS NOTED OTHERWISE.
5. REF. SHEET TA-413 FOR TYPICAL NURSE STATION MATERIALS AND DESIGN.
6. REF. SHEET TA-414 FOR TYPICAL RECEPTION DESK MATERIALS AND DESIGN.
7. REF. SHEET TA-415 FOR TYPICAL SCHEDULING DESK MATERIALS AND DESIGN.
8. ALL WALL BASE TO BE **WVB-5** UNLESS NOTED OTHERWISE.
9. ALL WALL FINISHES TO BE **PNT-1**, UNLESS NOTED OTHERWISE.

KEYED NOTES

NUMBER	DESCRIPTION
A2.08	REF. PLUMBING DRAWINGS FOR SPECS.

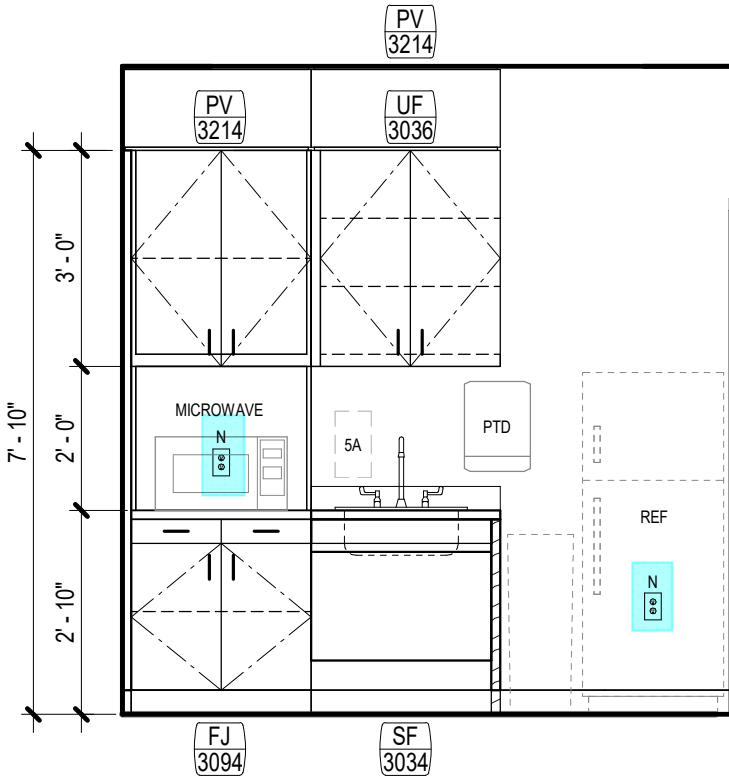
17 SCHEDULING - WEST

SCALE: 3/8" = 1'-0"



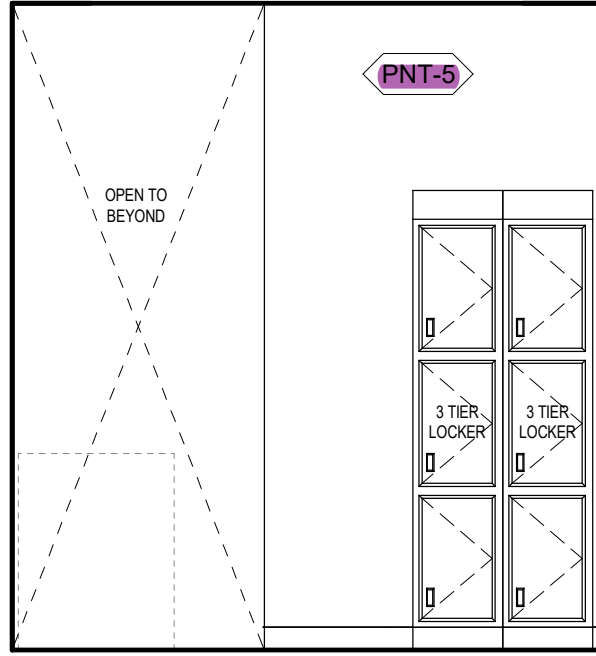
16 WAITING - WEST

SCALE: 3/8" = 1'-0"



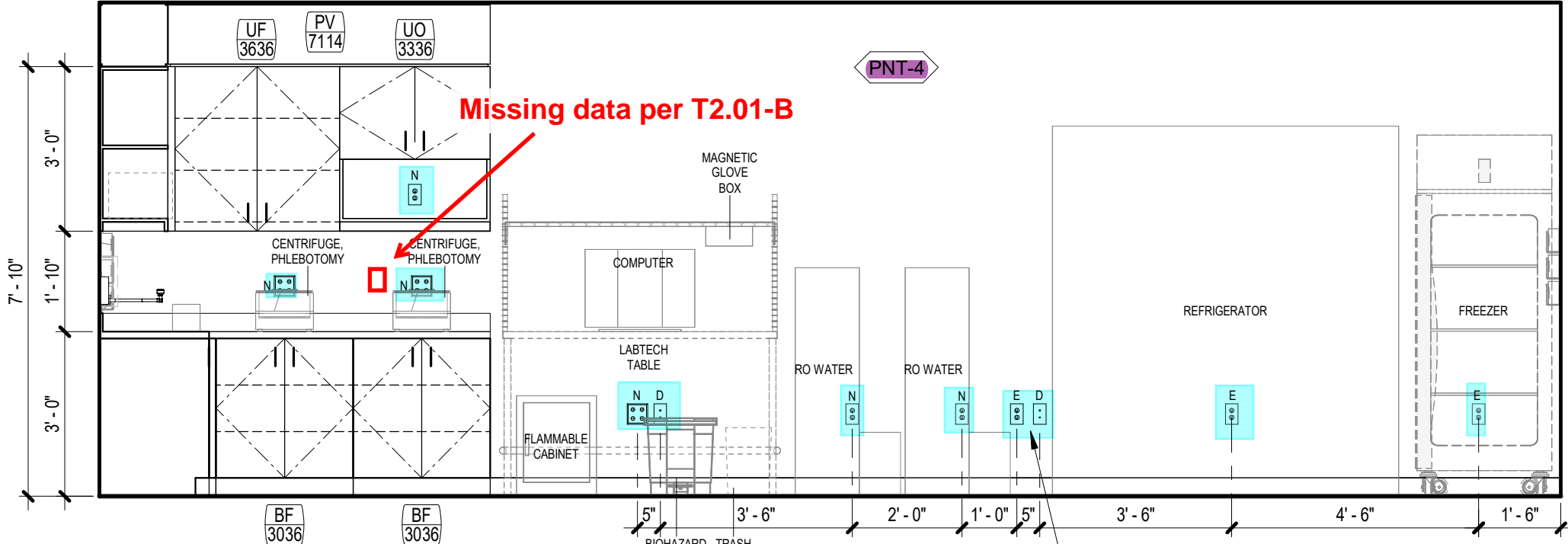
15 LAB - STAFF BREAK

SCALE: 3/8" = 1'-0"



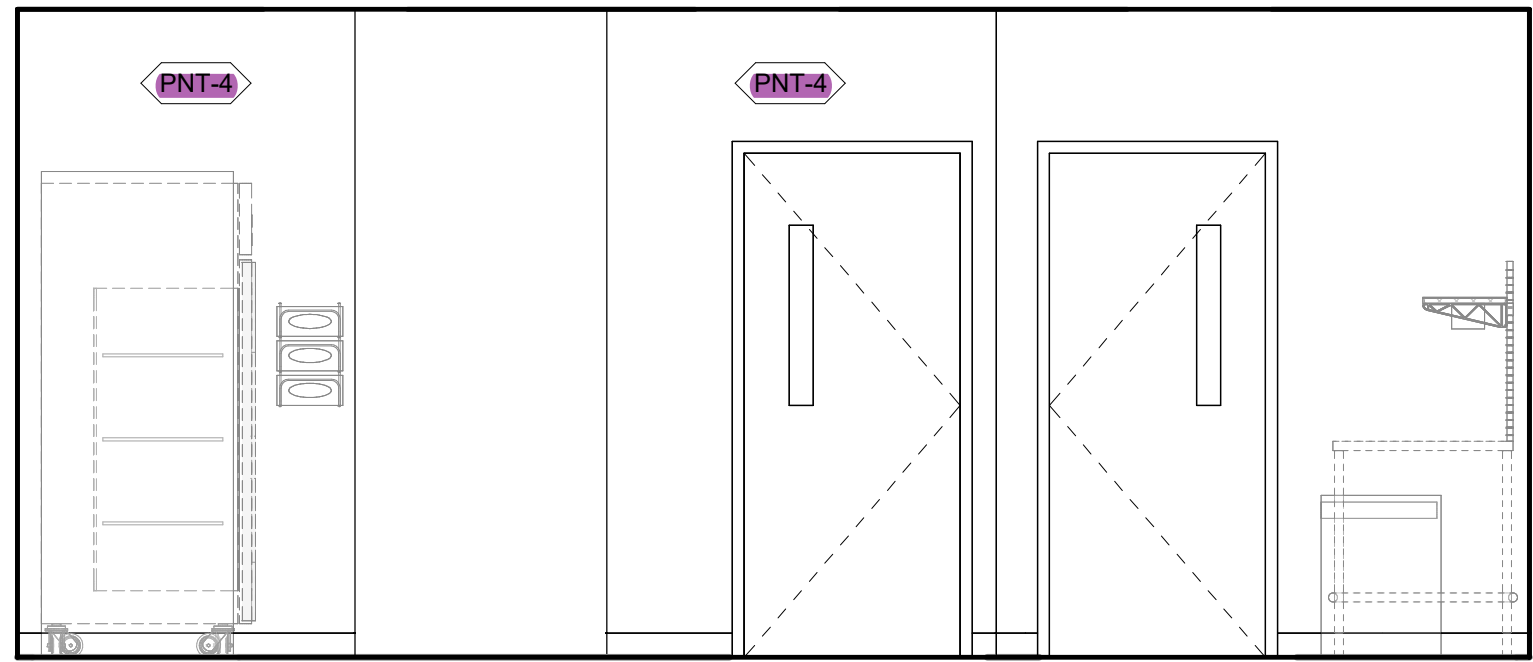
14 LAB - STORAGE

SCALE: 3/8" = 1'-0"



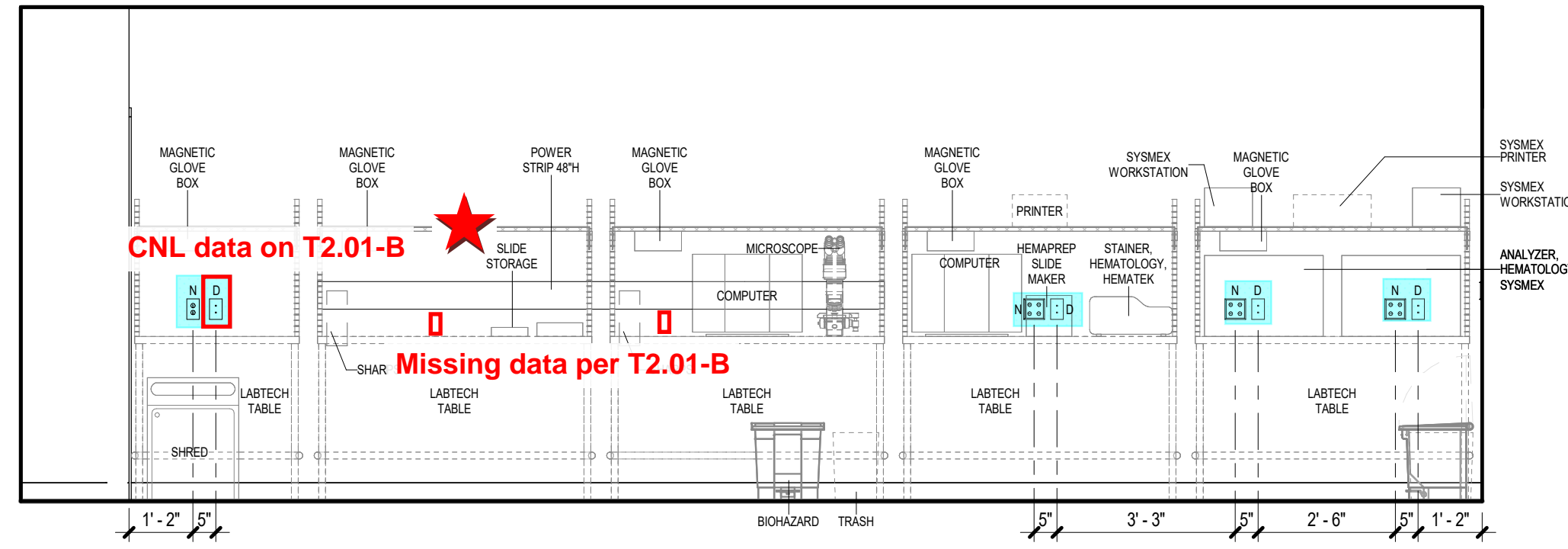
13 LAB - CLINICAL LAB - EAST

SCALE: 3/8" = 1'-0"



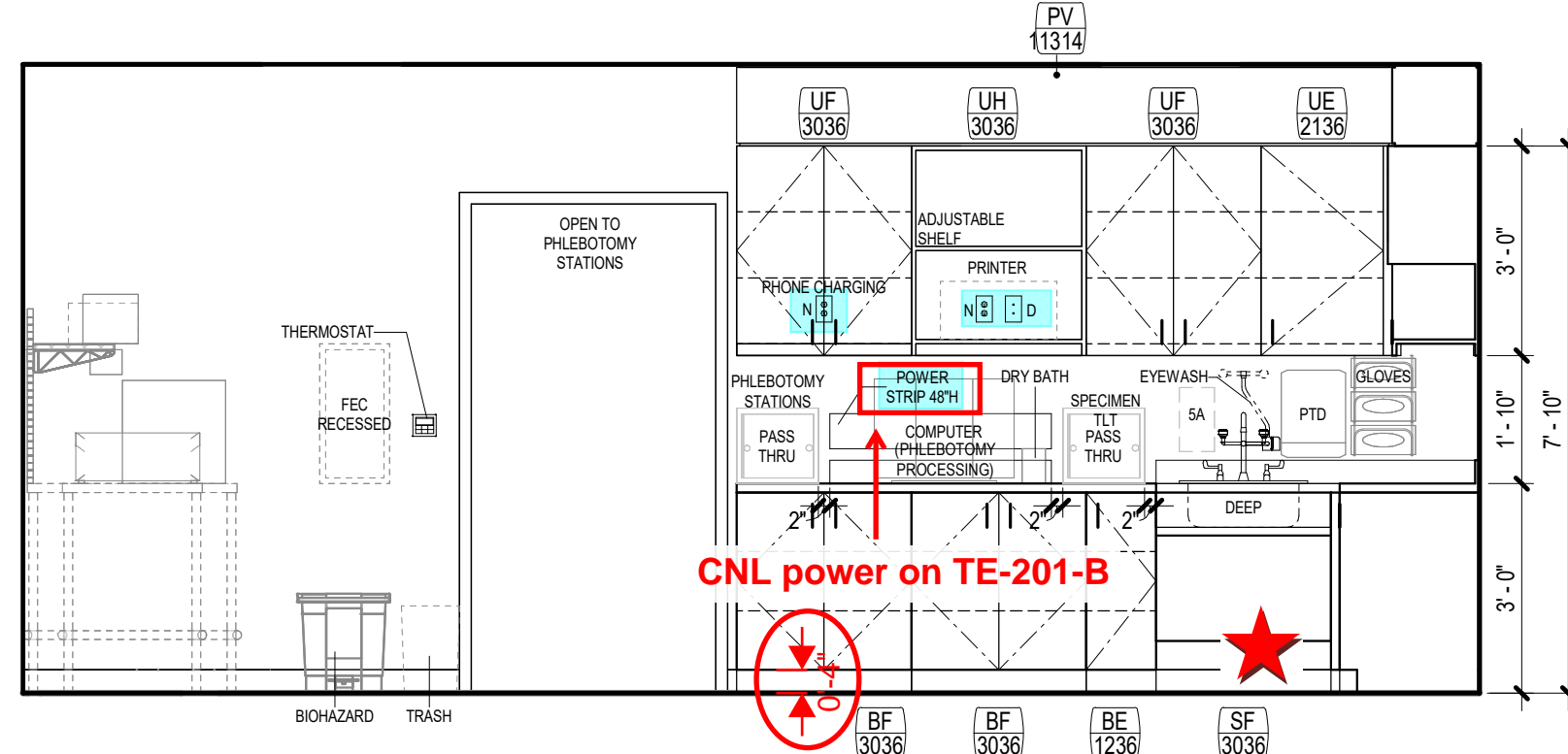
12 LAB - CLINICAL LAB - SOUTH

SCALE: 3/8" = 1'-0"



11 LAB - CLINICAL LAB - WEST

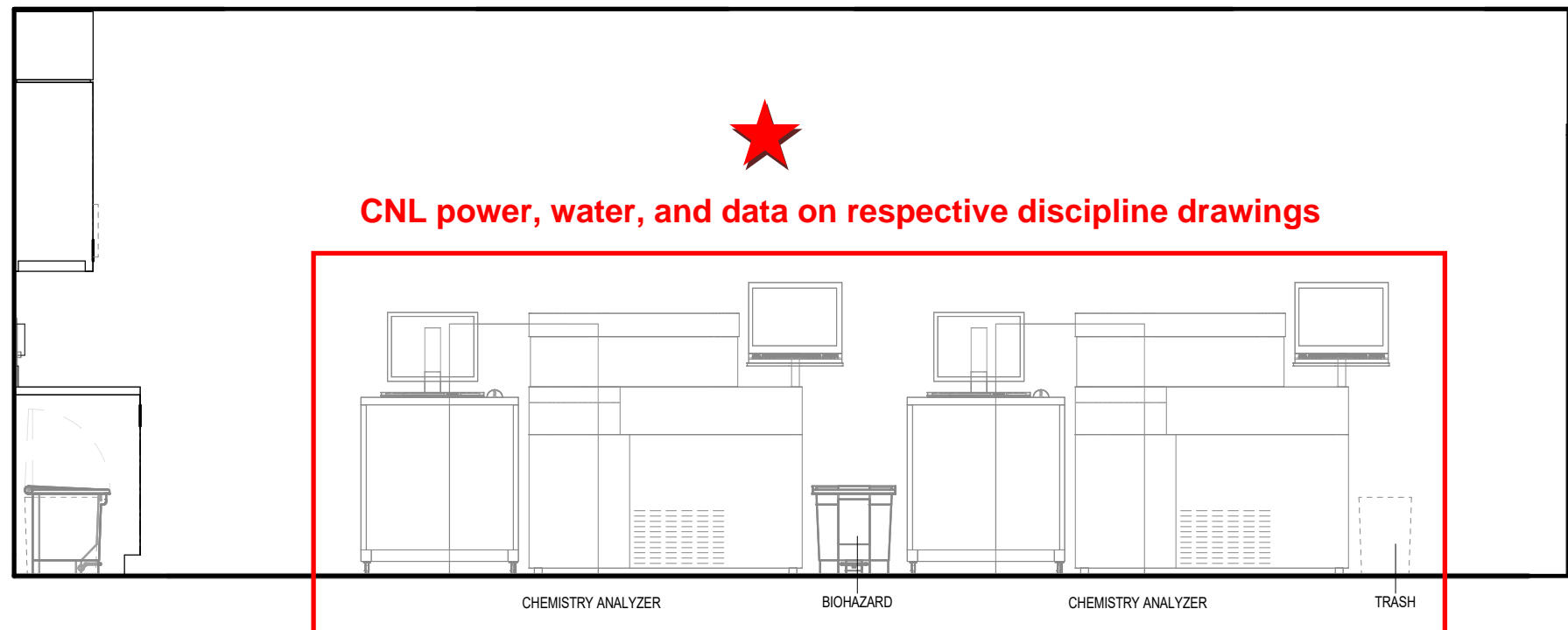
SCALE: 3/8" = 1'-0"



10 LAB - CLINICAL LAB - NORTH

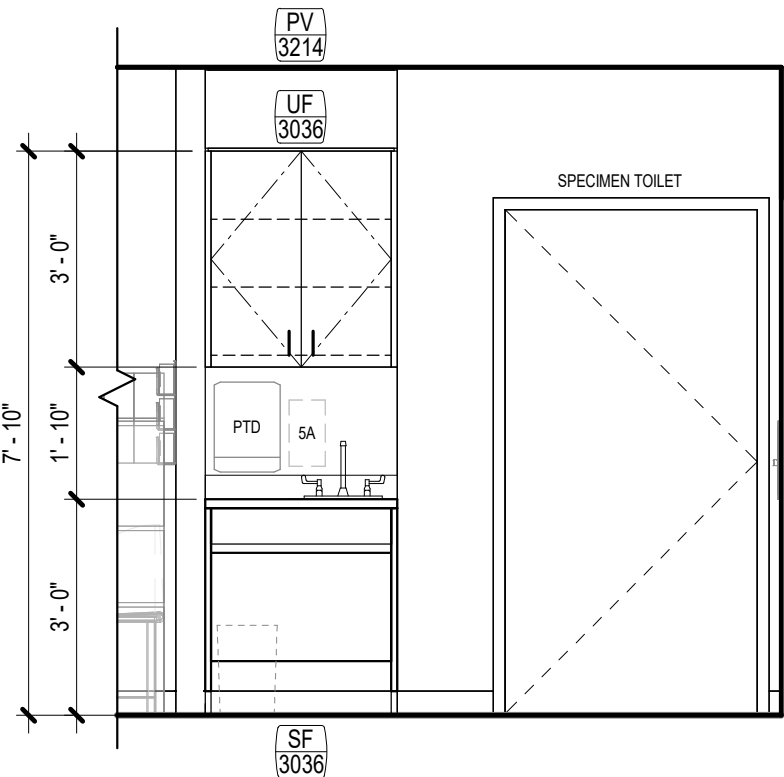
SCALE: 3/8" = 1'-0"

Room to receive 6" flash cove; should millwork base/toe-kick be at 6"?



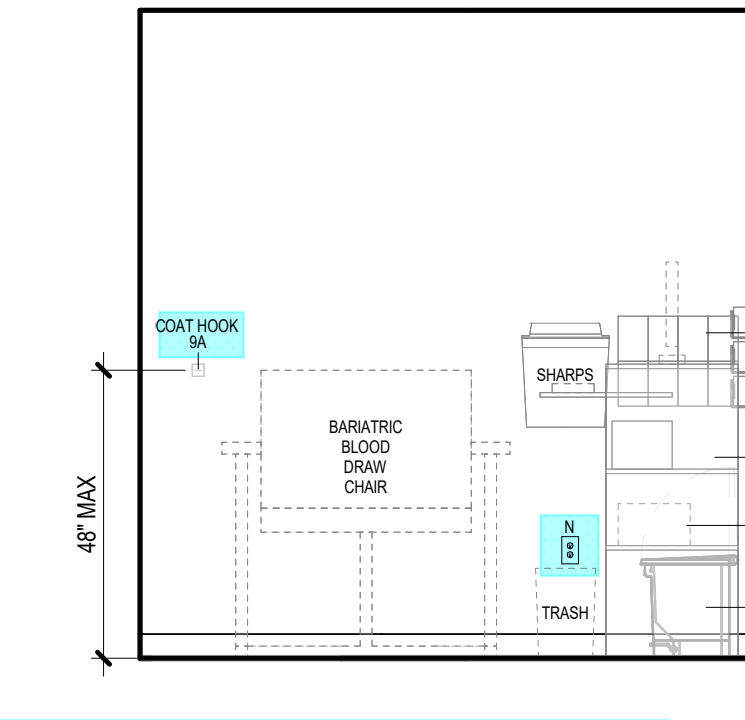
9 LAB - CLINICAL LAB - ANALYZER

SCALE: 3/8" = 1'-0"



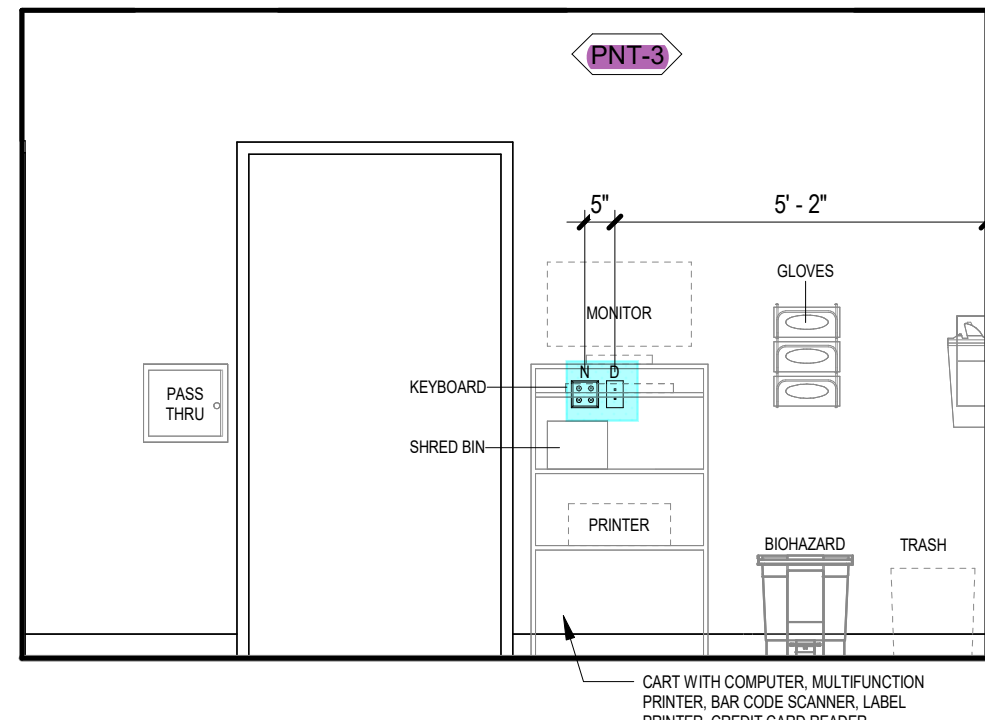
8 LAB - PHLEBOTOMY STATIONS - HANDWASH

SCALE: 3/8" = 1'-0"



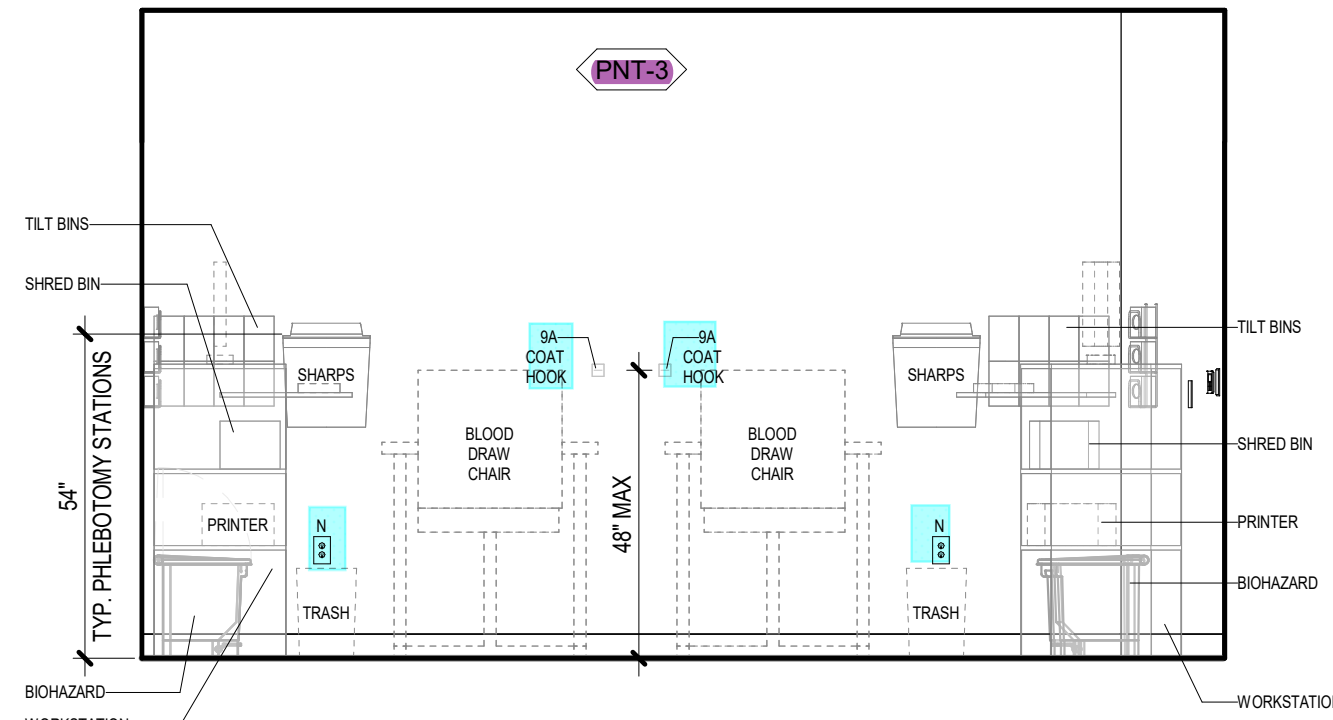
7 LAB - PHLEBOTOMY STATIONS - EAST

SCALE: 3/8" = 1'-0"



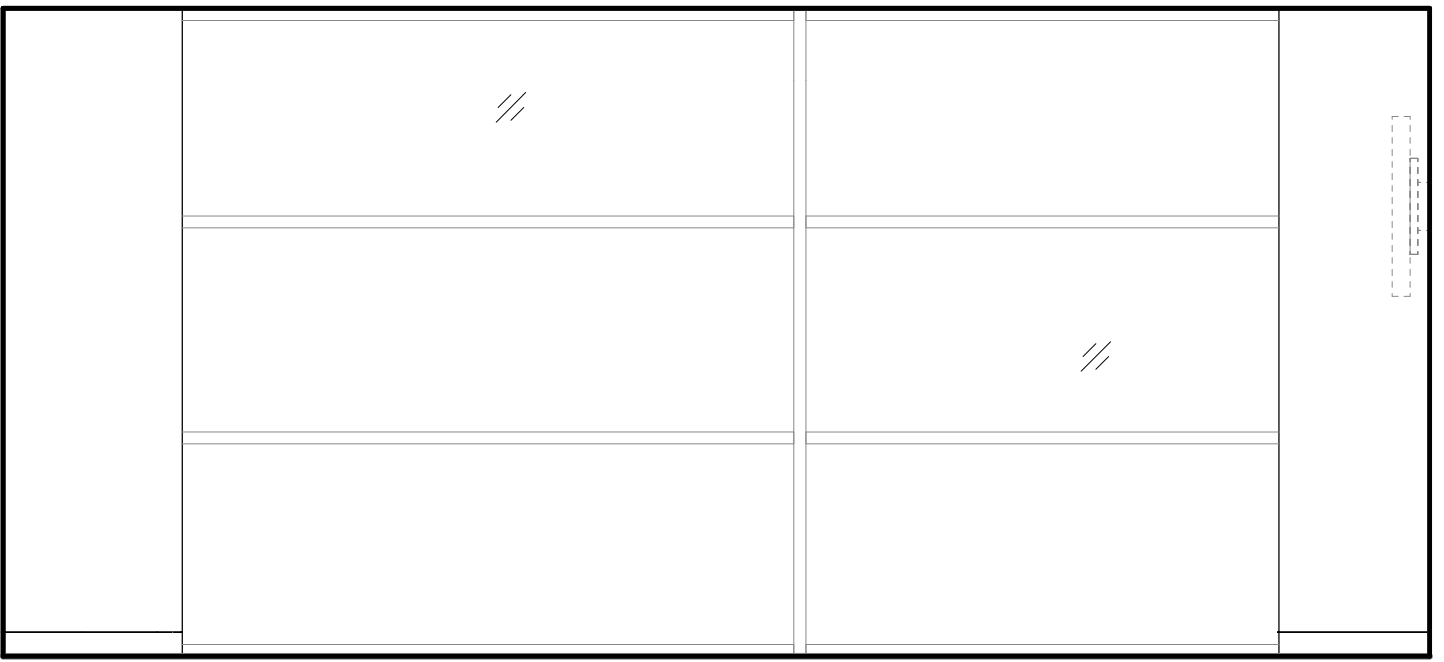
6 LAB - PHLEBOTOMY STATIONS - SOUTH

SCALE: 3/8" = 1'-0"



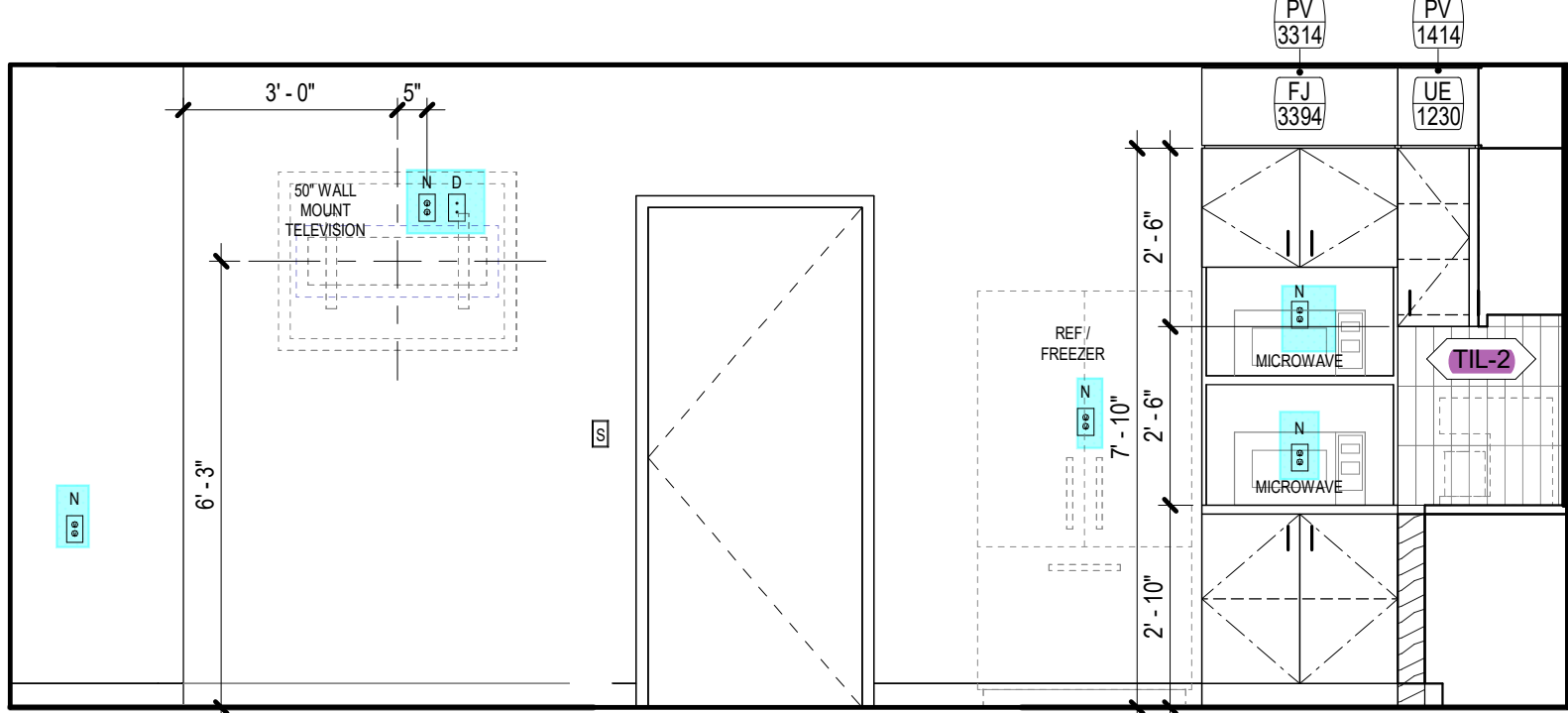
5 LAB - PHLEBOTOMY STATIONS - WEST

SCALE: 3/8" = 1'-0"



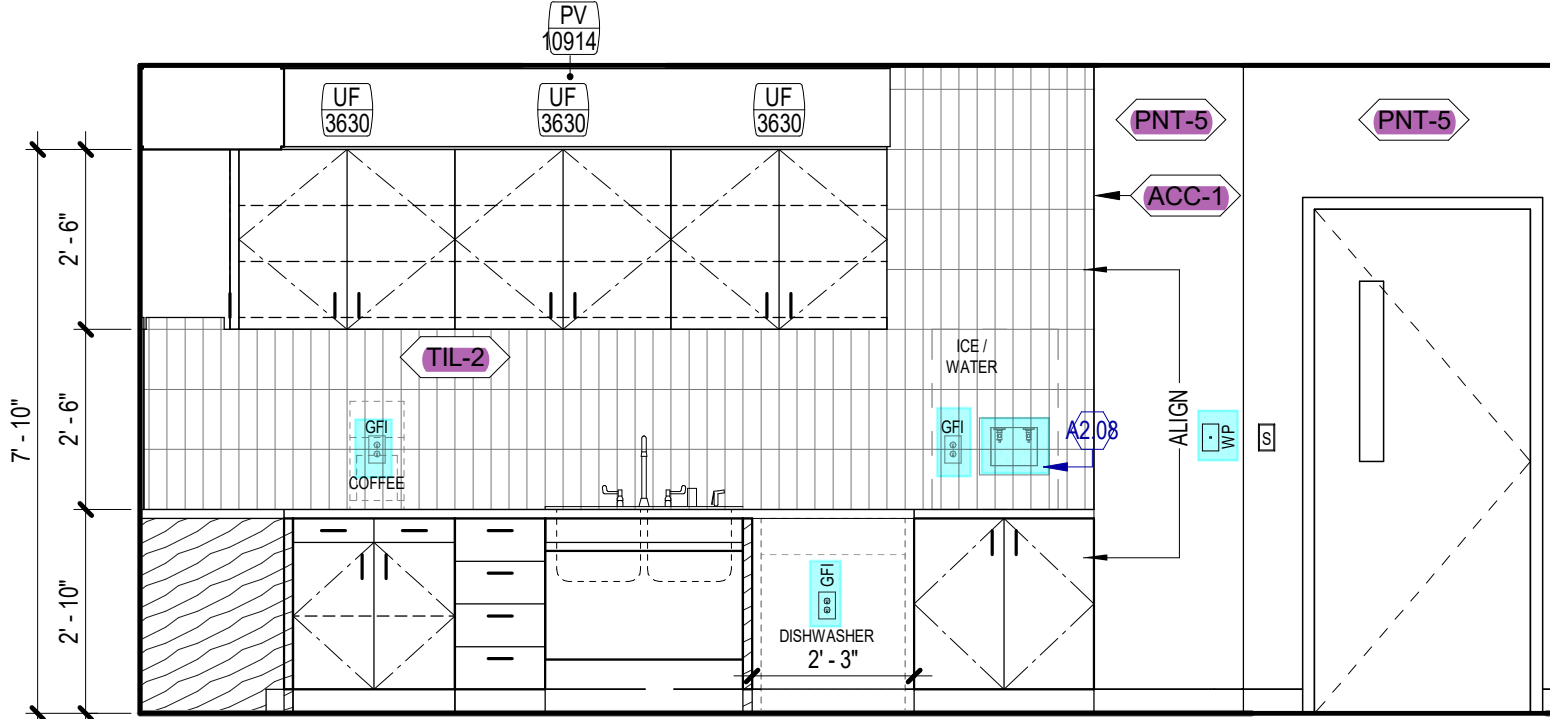
4 STAFF LOUNGE, LEVEL 01 - SOUTH

SCALE: 3/8" = 1'-0"



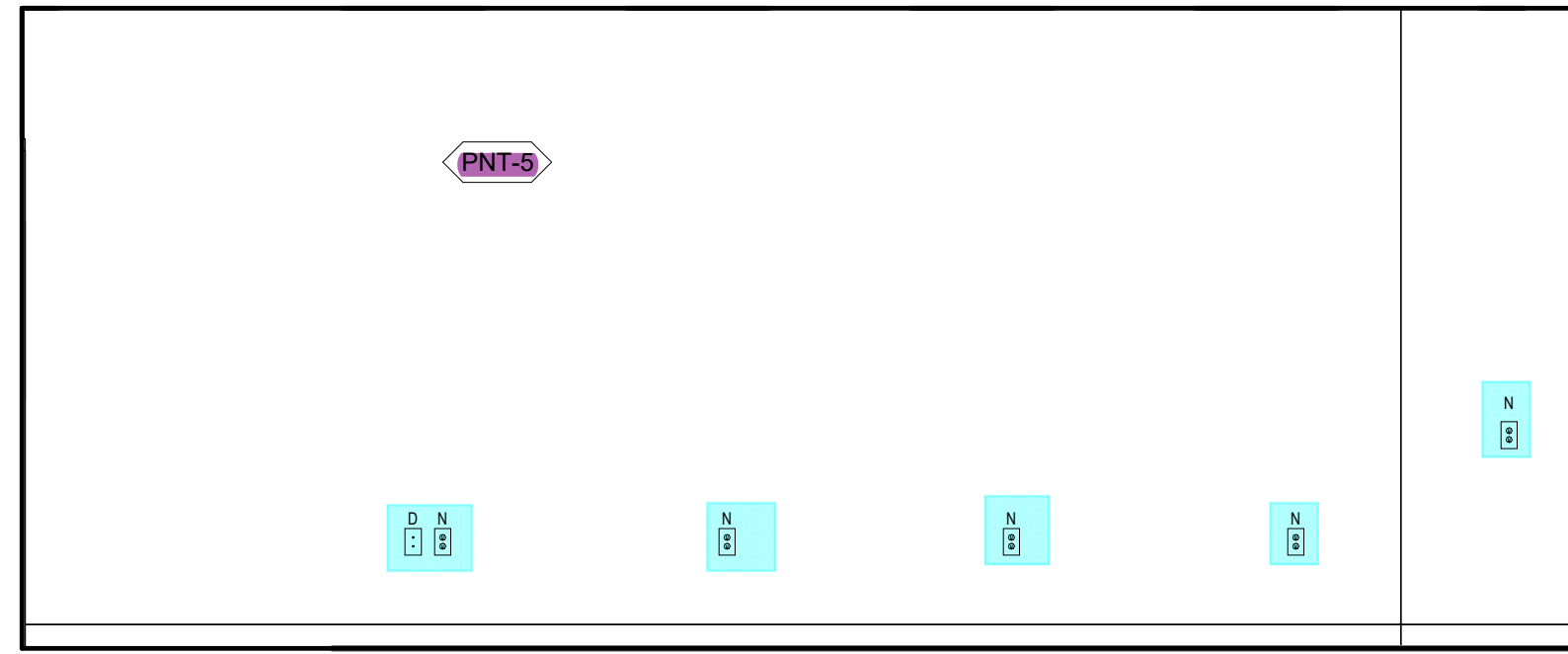
3 STAFF LOUNGE, LEVEL 01 - WEST

SCALE: 3/8" = 1'-0"



2 STAFF LOUNGE, LEVEL 01 - NORTH

SCALE: 3/8" = 1'-0"

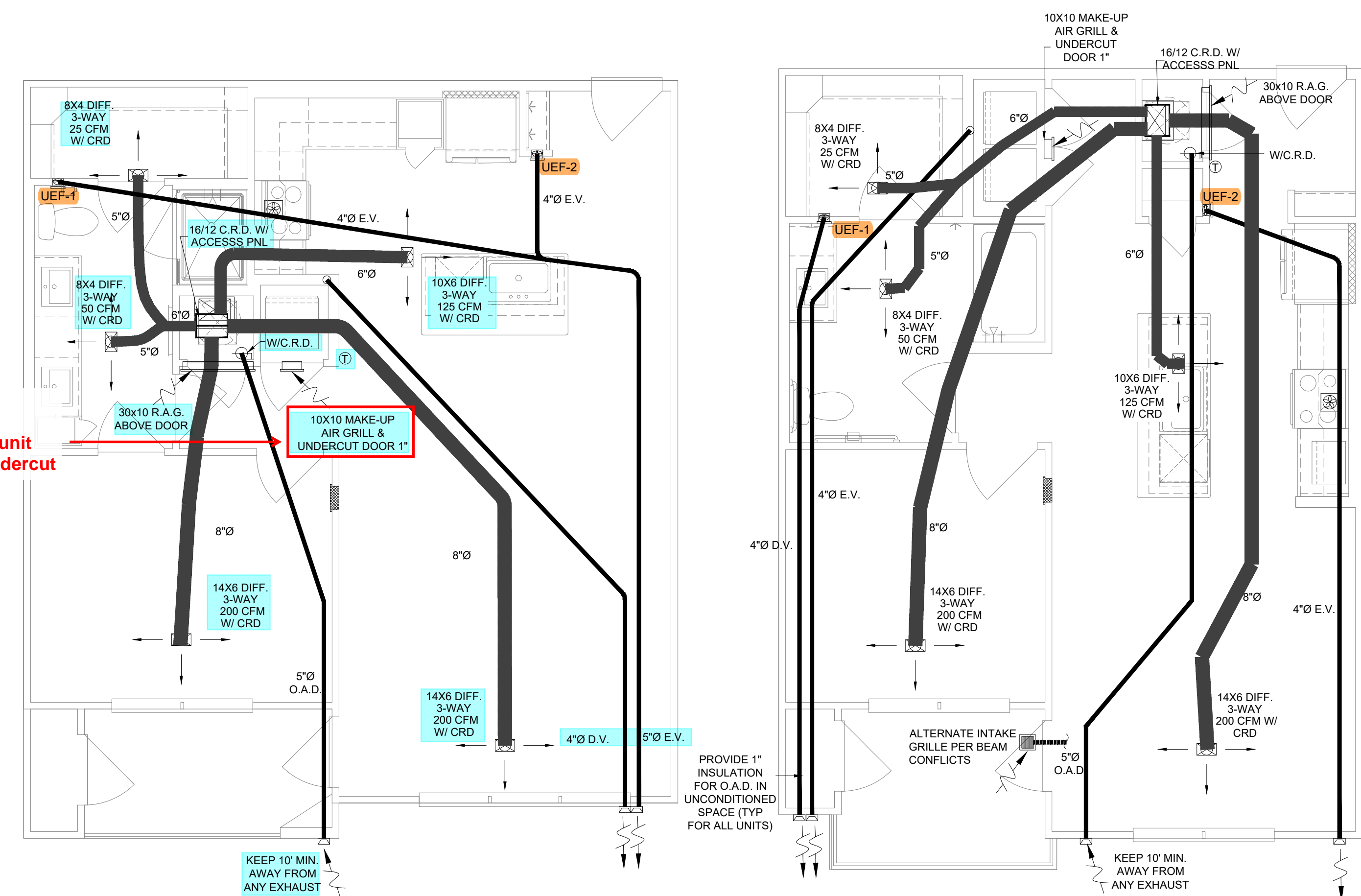


1 STAFF LOUNGE, LEVEL 01 - EAST

SCALE: 3/8" = 1'-0"

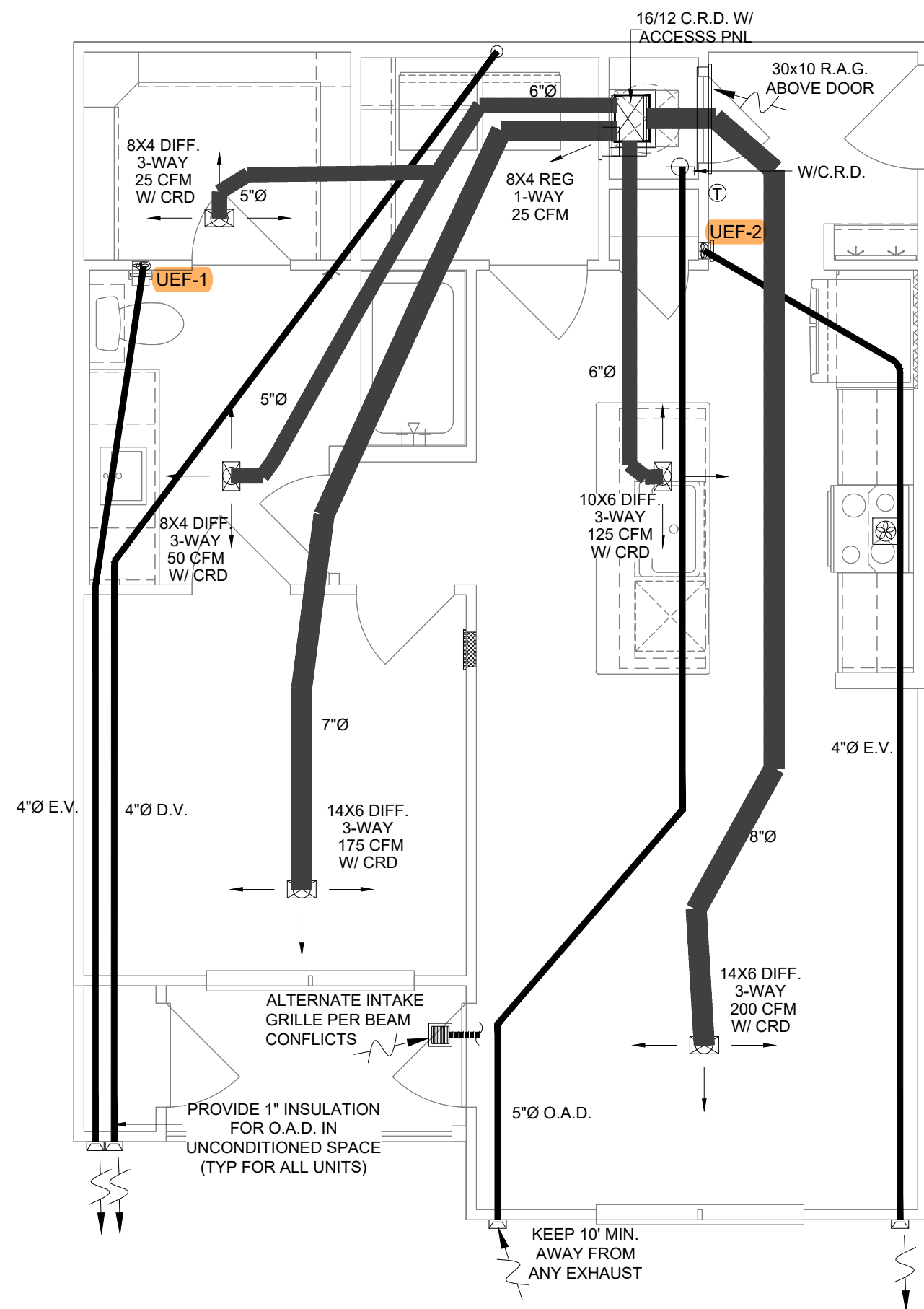
SAMPLE

Abbreviations
AVW = At Variance With
CNL = Could Not Locate
IR = Incorrect Reference



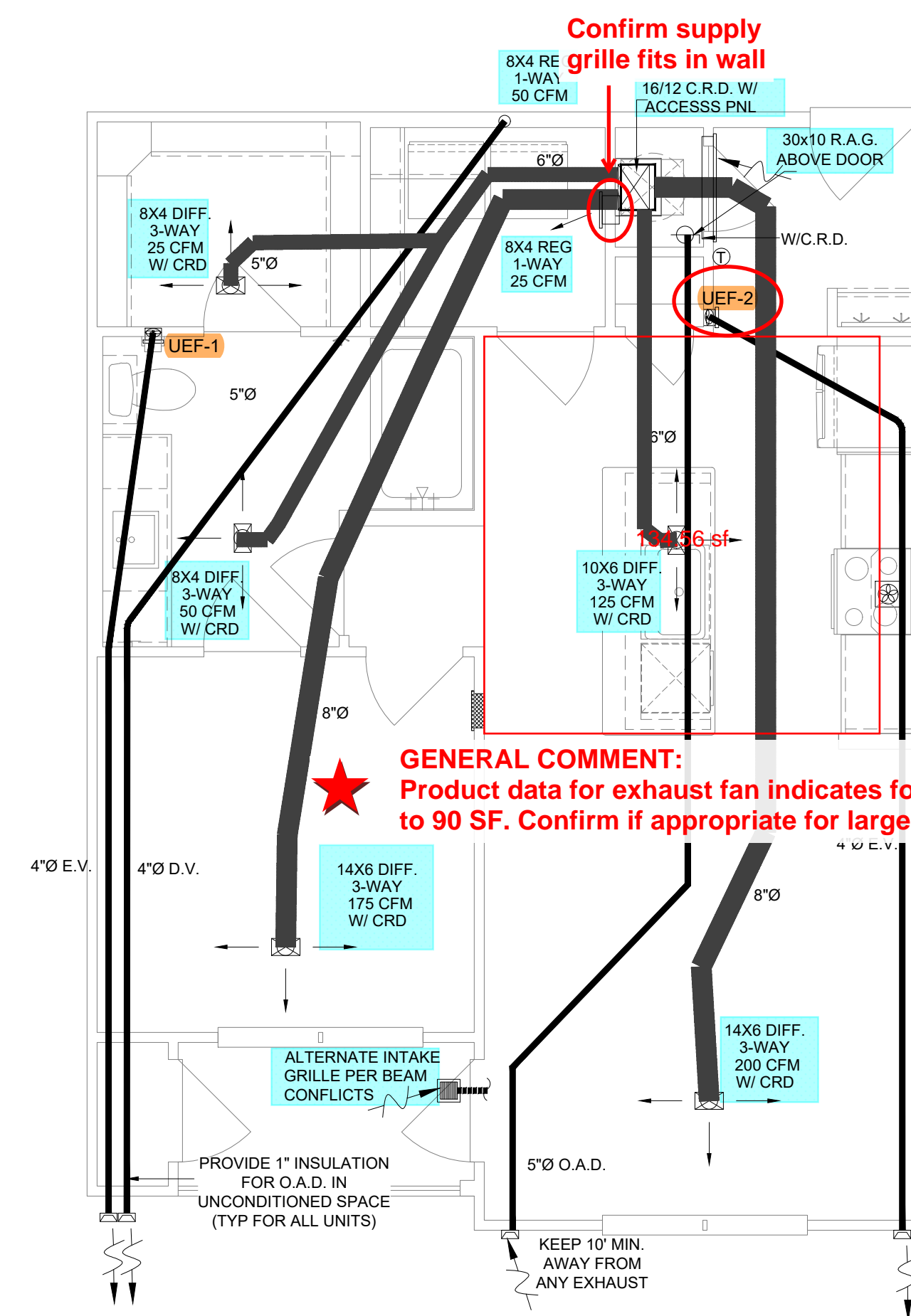
6 UNIT A4 FLOOR PLAN

5 UNIT A3 HC FLOOR PLAN



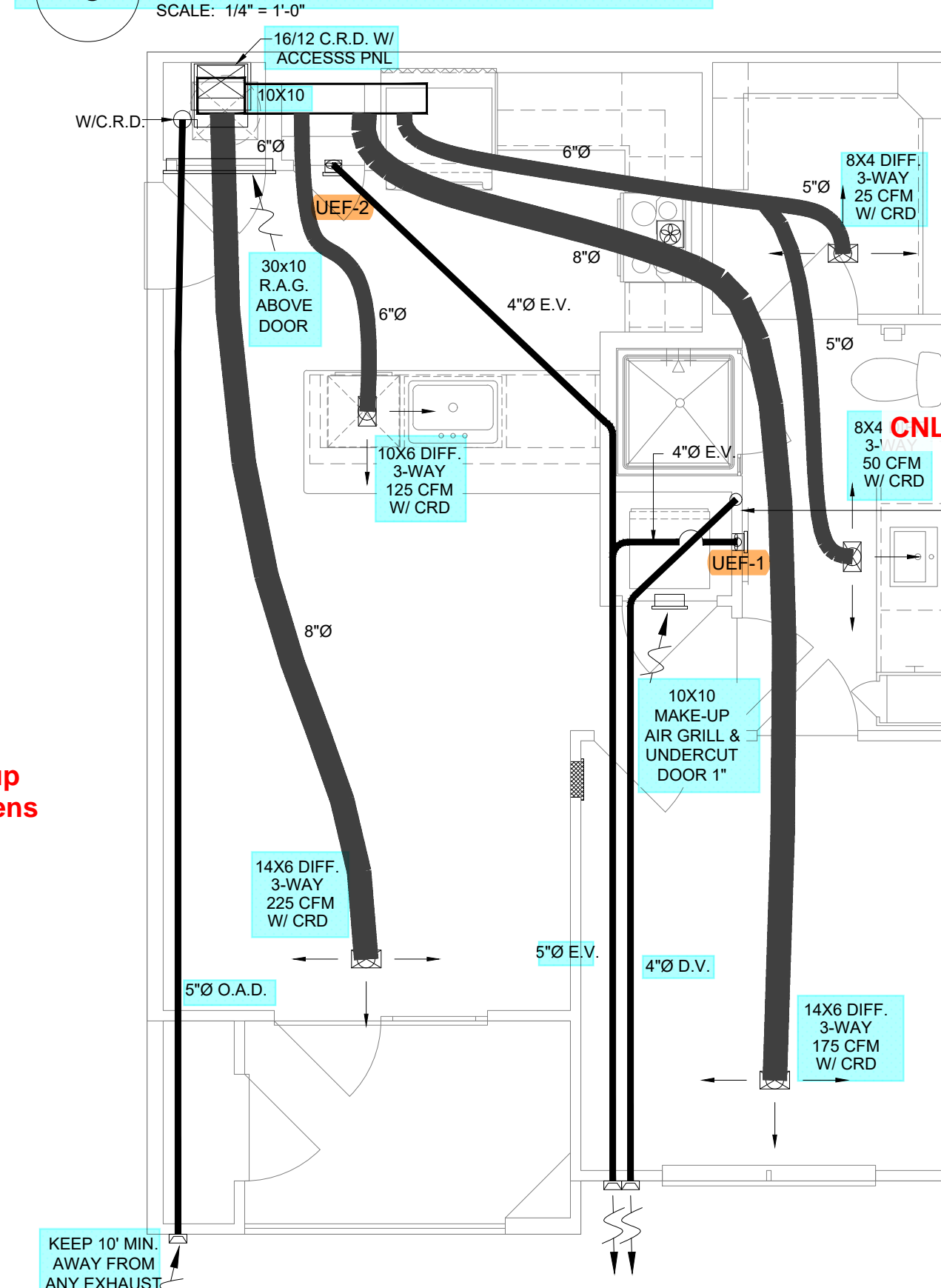
4 UNIT A 3B FLOOR PLAN

SCALE: 1/4" = 1'-0"



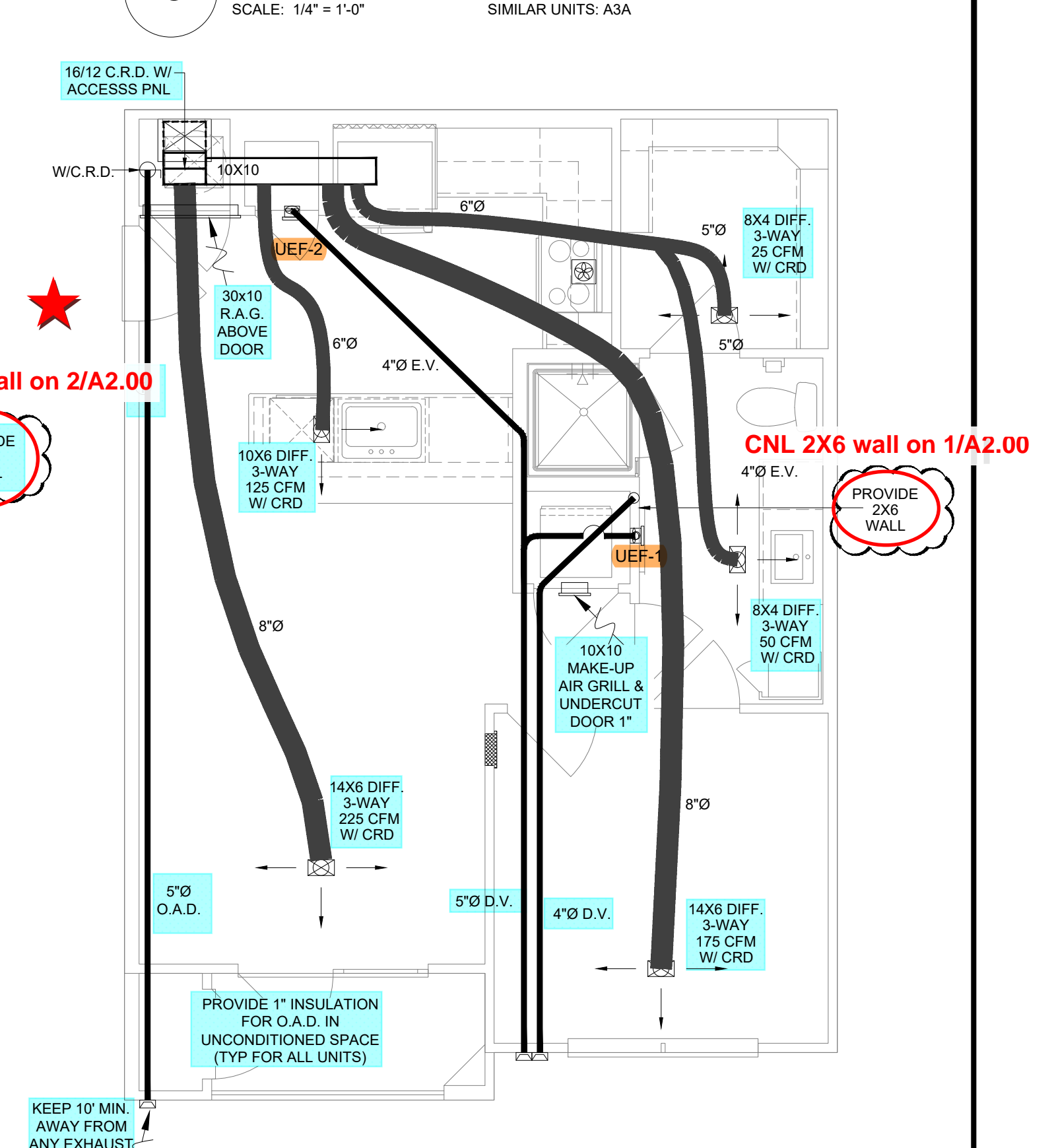
3 UNIT A3 FLOOR PLAN

SCALE: 1/4" = 1'-0" SIMILAR UNITS: A3A



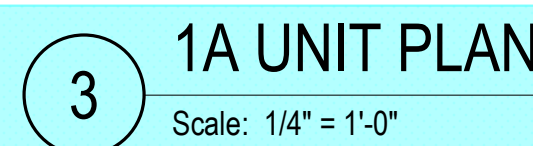
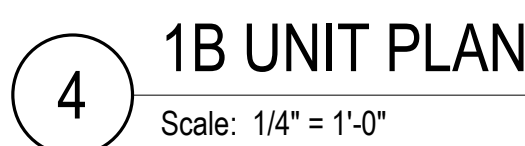
2 UNIT A2 FLOOR PLAN

SCALE: 1/4" = 1'-0"



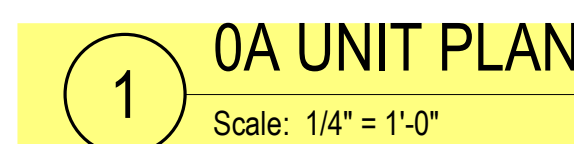
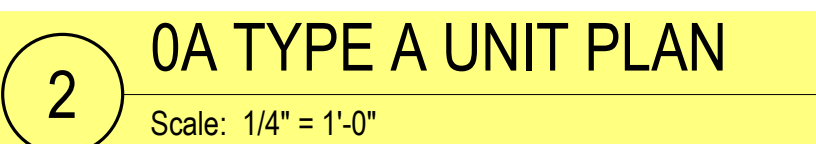
1 UNIT A1 FLOOR PLAN

SCALE: 1/4" = 1'-0"

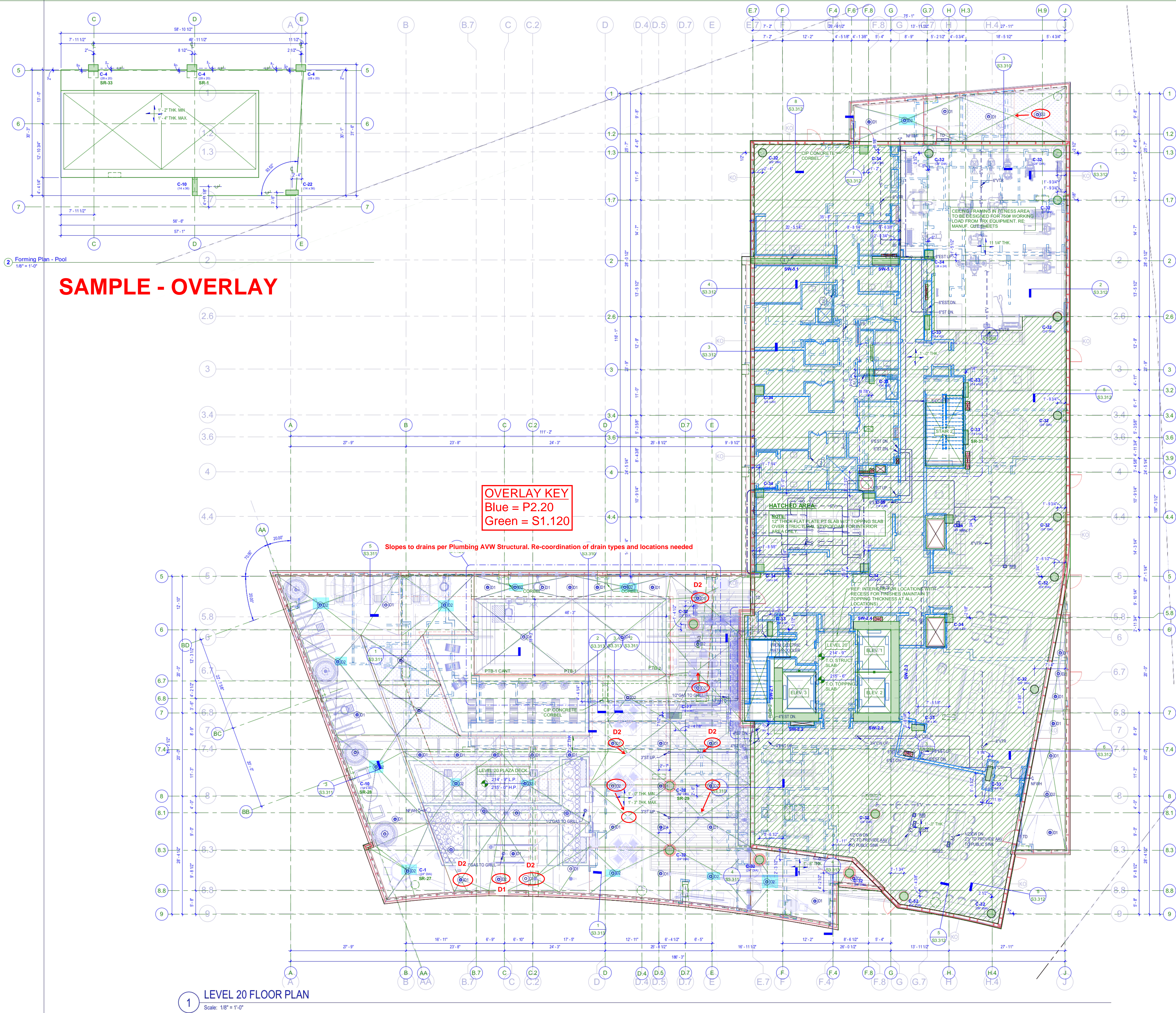


- ## GENERAL NOTES
1. LOCATION OF SMOKE ALARMS SHALL BE NO LESS THAN 36" FROM A BATHROOM DOOR, SUFFLY AIR REGISTRATION, OR TIP OF A CEILING FAN BLADE, AND SHALL BE NO LESS THAN 12" FROM ANY FIXED COOKING APPLIANCE, WHERE WALL MOUNTED. TOP OF DEVICE SHALL BE NO GREATER THAN 12" FROM CEILING. COORDINATE LOCATION WITH SOFFITS AND CROWN MOLDING (WHERE PRESENT).
 2. SMOKE AND CO ALARMS SHALL BE WIRED TO AN UNSWITCHED LIGHTING AND RECEPTACLE CIRCUIT. ALARM DEVICES WITHIN A DWELLING UNIT SHALL BE PROVIDED WITH AUXILIARY CONTACTS AND WIRING SUCH THAT SO THAT UPON THE ACTIVATION OF ANY ALARM IN THE DWELLING UNIT, ALL SMOKE AND CO ALARMS WITHIN THE DWELLING UNIT SHALL SIGNAL AN ALARM.
 3. REFER TO "ELECTRICAL DEVICES (DWELLING UNIT KITCHEN) DETAIL, INCLUDED IN THESE DRAWINGS FOR DIMENSIONAL INFORMATION OF DEVICES AT CORNERS (WHERE APPLICABLE).
 4. ALL 120V, 15- AND 20-AMP RECEPTABLES IN DWELLING UNITS SHALL BE LISTED TAPPE-RESISTANT TYPE.
 5. OUTLET BOXES INSTALLED FOR CEILING FANS SHALL BE UL-LISTED "FOR USE WITH CEILING FANS".
 6. REFER TO MECHANICAL EQUIPMENT CONNECTION SCHEDULE FOR APPLICABLE CIRCUIT REQUIREMENTS.
 7. PRIOR TO HIRING IN-CONTRACTOR SHALL:
 - COORDINATE EXIST REQUIREMENTS OF ALL EQUIPMENT AND APPLIANCES FURNISHED BY OTHERS.
 - COORDINATE LIGHTING FIXTURE LOCATIONS WITH ARCHITECTURAL/INTERIORS DRAWINGS.
 8. SEVERAL DWELLING UNIT CIRCUITS AND EQUIPMENTS ARE REQUIRED TO BE A/F-I AND/OR G/F-I. PROVIDE DETAIL TO INDICATE AND PROVIDE TAPPE-RESISTANT FOR MORE INFORMATION.
 9. CONTRACTOR SHALL ENSURE ALL WALL MOUNTED RECEPTABLES LOCATED AT EACH WINDOW ARE COORDINATE FOR EACH UNIT AND MUST NOT VIOLATE THE PROJECT PRIOR TO POURING IN WITH THE ARCHITECT. THIS IS TO ENSURE NO UNIT TYPE ONE OFF CONDITIONS WHERE ANY OF THE UNITS WERE UPGRADED TO GET A FULL, HEIGHT WINDOW THAT WOULD TRIGGER A FLOOR BOX OUTLET TO MAINTAIN REQUIRED NEC 210.8 SPACING. NOTIFY THE ENGINEER IF ANY DISCREPANCIES WERE TO OCCUR. ROUGH-IN, CONCRETE POURS, FLOORING INSTALLATIONS, ETC.
 10. CONTRACTOR SHALL COORDINATE CLOSELY WITH MECHANICAL AND PLUMBING CONTRACTORS TO ENSURE PROPER OUTLET PLACEMENT ARE BEING INSTALLED FOR LAUNDRY CONNECTIONS WITHOUT CONFLICTS OF OTHER TRADES AND ALSO BEING INSTALLED PER MANUFACTURER BEING FURNISHED.
 11. FOR DWELG UNITS DESIGNATED TO HAVE ACCESSIBLE/MILE FEATURES (S/F OF DWELLINGS): LONG UNITS SHALL BE INSTALLED THAT NO TOP LATCH OR BRACKET IS GREATER THAN 48" AFF.
 - A TOGGLE SWITCH SHALL BE FIELD-INSTALLED AND WIRED FOR THE RANGE HOOD/LIGHT SWITCH. THIS SWITCH SHALL BE INSTALLED ABOVE COUNTERTOP WHERE REQUIRED, REACHES.
 12. FOR DWELLING UNITS DESIGNATED TO HAVE COMMUNICATION FEATURES (2/F OF DWELLINGS) FOR SENSING (IMPAIRED HEARING OR VISION):
 - FURNISH AND INSTALL AN EDWARDS (OR EQUAL) "DOORBELL" SYSTEM (CAT# 700-5), CONSISTING OF A LOW-VOLTAGE TRANSFORMER, PUSHBUTTON AND HORN/STROBE.
 - PROVIDE PUSHBUTTON WITH OPERATE CATH #14-10 OUTSIDE OF ENTRY DOOR.
 - TRANSFORMER CONCEALED WITHIN CLOTHES CLOSET, AND HORN/STROBE WITHIN LIVING ROOM.
 - EACH FIRE ALARM SYSTEM ADJACENT APPLIANCE SHALL BE EQUIPPED WITH A VISUAL DEVICE.
 - A FIRE ALARM VISUAL DEVICE SHALL BE INSTALLED IN EACH BATHROOM.
 - REFER TO DETAIL, INCLUDED IN THESE DRAWINGS FOR WIRING DIAGRAM OF SMOKE ALARMS AND FIRE ALARM DEVICES.

ELECTRICAL UNIT ABBREVIATIONS	
1	NEMA 5-20R FOR CLOTHES WASHER. CIRCUIT SHALL BE 2#12, #10G.
2	NEMA 14-30R FOR CLOTHES DRYER. CIRCUIT SHALL BE 3#10, #10G.
3	NEMA 14-50R FOR RANGE / OVEN. CIRCUIT SHALL BE 3#6, #10G.
4	NEMA 5-20R FOR MICROWAVE / EXHAUST HOOD. CIRCUIT SHALL BE 2#12, #12G. LOCATE RECEPTACLE IN CABINETY ABOVE.
5	NEMA 5-20R FOR SPLIT-WIRED DUPLEX. WITHIN BASE CABINET, FOR SINK DISPOSAL, DISHWASHER CONNECTIONS. RECEPTACLE SHALL BE ACCESSIBLE AND LOCATED IN CABINETY ADJACENT TO DISHWASHER. DISHWASHER CORD LENGTH SHALL NOT EXCEED 6'-6".
6	DISCONNECT SWITCH FOR AIR-HANDLING UNIT. REFER TO DWELLING MECHANICAL SCHEDULE FOR MORE INFORMATION.
7	INSTALL RECEPTACLE NO MORE THAN 1'2" BELOW COUNTERTOP. PROVIDED THAT THE COUNTERTOP EXTENDS NO MORE THAN 6" BEYOND ITS SUPPORT BASE.
8	CONTRACTOR TO FURNISH AND INSTALL A STRUCTURED MECHANICAL SMOG (IN CASE DWELLING UNIT). COORDINATE EXACT LOCATION AND TYPE WITH TELECOM CONSULTANT.
9	PROVIDE A CEILING FAN RATED JUNCTION BOX.
10	DISCONNECT SWITCH FOR ELECTRIC WATER HEATER REFER TO 'DWELLING MECHANICAL SCHEDULE' FOR MORE INFORMATION.
11	NEMA 5-20R FOR MICROWAVE (AN ANSHIC UNIT); CIRCUIT SHALL BE 2#12, #12G.
12	NEMA 5-20R FOR HOOD. CIRCUIT SHALL BE 2#12, #12G. LOCATE RECEPTACLE IN CABINETY ABOVE. REFER TO MECHANICAL DETAILS (E.G. WALL TYPE RANGE HOOD DETAIL).
13	PROVIDE JUNCTION BOX FOR POWER TO OUTSIDE AIR FAN (OAF). SPEED CONTROLLER AND RELAY PROVIDED BY DESIGN. OAF SHALL BE PROVIDED WITH MOTOR RATED DISCONNECT SWITCH AS PART OF THE MECHANICAL SUBMITTAL. CONTRACTOR SHALL COORDINATE AND INSTALL DISCONNECT TO MEET NEC WORKING CLEARANCE REQUIREMENTS. CONNECT TO THE NEAREST LIGHTING & RECEPTACLE CIRCUIT. VERIFY ALL REQUIREMENTS WITH THE MECHANICAL CONTRACTOR PRIOR TO INSTALLATION.
14	CONTRACTOR SHALL REFER TO SHEET E-03, DETAIL 7 FOR ADDITIONAL INFORMATION REGARDING TYPICAL (E.G. HIGH AND LOW), BLOCKING, ETC. CONFORM WITH OWNERSHIP REGARDING TYPICAL DETAIL REFERENCED IS LATEST PER LATEST OWNERSHIP STANDARDS.



ELECTRICAL UNITS ABBREVIATIONS	
DR	ELECTRIC DRYER
DW	DISHWASHER
GD	GARBAGE DISPOSAL
GD/DW	GARBAGE DISPOSAL / DISHWASHER
ER	ELECTRIC RANGE
HD	HOOD
MW	MICROWAVE
MWHD	MICROWAVE / HOOD
PDS	PNEUMATIC DISPOSAL SWITCH
RF	REFRIGERATOR
SMC	STRUCTURED MEDIA CABINET
WM	WASHING MACHINE



SAMPLE - OVERLAY

OVERLAY KEY
Blue = P2.20
Green = S1.120

GENERAL NOTES: APPLIES TO THIS SHEET

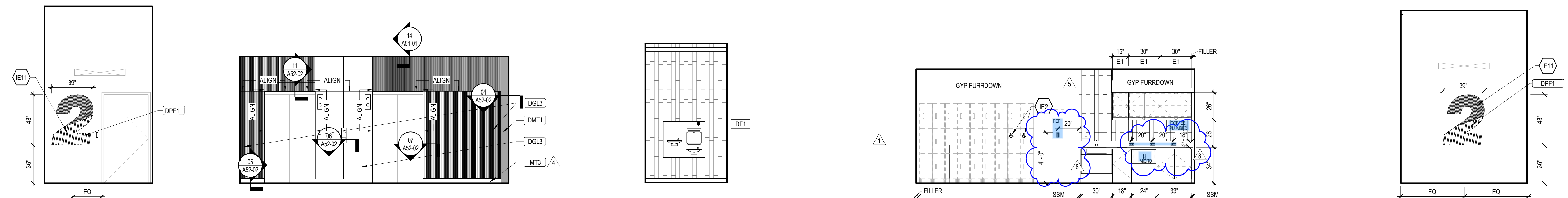
1. NOISE IS AN UNAVOIDABLE BY-PRODUCT OF PLUMBING WITHIN BUILDINGS. FOR A LUXURY PROJECT SUCH AS PLUMBING NOISE COULD BE A SOURCE OF EMBARRASS AND ANNOYANCE IF NOT PROPERLY CONTROLLED. AN EXPERIENCED BY TENANTS. ITS POTENTIAL FOR ANNOYANCE EXCEEDS THAT OF OTHER NOISE SOURCES WHICH INTRUDE AT MUCH HIGHER SOUND LEVELS. WE RECOMMEND FOLLOWING NOISE CONTROL GUIDELINES:
 - A. STANTARY AND STORM VERTICAL RISER PIPE SUPPORTED WITH RISER CLAMPS SHOULD HAVE NORMAL LIFT-THICK NEOPRENE PAD OR FELT. THE RISER CLAMPS AND STRUCTURE OR USE CUSH-AC-LAMP NOTED ABOVE. ALLOW SUFFICIENT CLEARANCE AROUND PIPE TO PREVENT VIBR "SHORT CIRCUITS" TO THE SLAB. PACK SPACE PIPE AND SLAB WITH APPROVED FIRE RATED AND SEAL WITH A NON-HARDENING CAULK.
 - B. WHERE STORM RISER PIPING IS LOCATED IN UNITS, RECOMMENDED TREATMENTS ARE AS FOLLOWS:
 1. DO NOT ALLOW THE PIPING TO MAKE CONTACT WITH THE STUDS OR THE BOARD.
 2. AT POTENTIAL HARD CONTACT POINTS PLACE A PIECE OF ARMAFLEX INSULATION BETWEEN THE PIPE AND CONTACT POINT.
 - C. PLUMBING PIPING LOCATED IN PARTITIONS ADJACENT TO BEDROOMS SHOULD:
 1. BE SIZED SUCH THAT THE PIPING MAKE CONTACT WITH ANY INTERNAL FRAM MATERIALS OR GYPSUM BOARD.
 2. RUN ON THE BATHROOM SIDE OF THE PARTITION CAVITY. DO NOT ALLOW TO BRIDGE TO THE ADJACENT STUD.
 3. BE WRAPPED WITH 1/2" THICK ARMAFLEX INSULATION COMPLETELY FILL SPACE AROUND THE PIPING.
 - D. HORIZONTAL PIPE RUNS GREATER THAN 20' SHOULD BE STORM DRAIN PIPING ON LEVELS SHOULD BE WRAPPED WITH AN ACOUSTICAL INSULATION. THIS ONLY APPLIES TO STORM OR SANITARY LOCATED OVER SENSITIVE OCCUPIED SPACE. BEDROOMS AND LIVING ROOMS. ACOUSTICAL TREATMENT SHOULD BE EQUIVALENT TO MIN. EARTHWOOL 100% NPS 6" 2" THICKNESS 0.57 OUTER JACKET PIPE INSULATION NETWELL. A THE VINNAPLEX (VP1-100) NOISE BARRIER.
 1. FULLY INSULATED CAVITIES DO NOT PIPE WRAP AND THE PIPE JUNT YOU SPRAY FOAM.
 - E. SANITARY PIPING AT SENSITIVE OCCUPIED SPACE NON-STACKING UNITS MUST BE WRAPPED FOR 4-5 FEET AFTER THE DROP WITH AN ACOUSTICAL INSULATION. 100% NPS 6" 2" THICKNESS 0.57 PSF OUTER JACKET PIPE INSULATION. OR NETWELL NETLAG. OR VP-100 ARE ACCEPTABLE ALTERNATIVES.

1 LEVEL 20 FLOOR PLAN
Scale: 1/8" = 1'-0"

1 Forming Plan - Level 20
1/8" = 1'-0"

FORMING PLAN NOTES:

1. CONTRACTOR TO CROSS REFERENCE AND/OR VERIFY ALL DIMENSIONS, ELEVATIONS, RECESSES, DEPRESSIONS, CURB SIZES, LOCATIONS, WALL ELEVATIONS, GUARDRAILS, FINISHES, OPENINGS AND SLAB PENETRATIONS SIZES, LOCATIONS WITH ARCHITECTURAL DRAWINGS AND NOTIFY ARCHITECT AND ENGINEER OF ANY DISCREPANCIES PRIOR TO CONSTRUCTION.
2. REFER TO ARCHITECTURAL SLAB DIMENSIONAL CONTROL PLAN FOR ALL SLAB EDGE AND OPENING DIMENSIONS NOT SHOWN TYPICAL.
3. TOP OF CONCRETE (TOC) = SEE PLAN.
4. SLAB THICKNESS = SEE PLAN.
5. CONCRETE STRENGTH = REFER TO GENERAL NOTES.
6. C-X DENOTES CIP CONCRETE COLUMN. FOR COLUMN SCHEDULE SEE SHEET SERIES 58.001.
7. SW-X DENOTES CIP CONCRETE SHEAR WALL. FOR SHEAR WALL ELEVATIONS SEE SHEET SERIES 58.200.
8. SR-X DENOTES STUD RAILS. FOR STUD RAIL SCHEDULE AND DETAILS SEE SHEET 58.120.
9. BASEMENT WALL CONCRETE TO RECEIVE HYDROPHOBIC WATERPROOFING ADMIXTURE. SEE: GENERAL NOTES FOR MORE INFORMATION.



33 1VT02 - STAIR 2 - N
1/4" = 1'-0"

32 2OB80 - ELEVATOR LOBBY - E
1/4" = 1'-0"

31 2OB21 - FAMILY WAITING - N1
1/4" = 1'-0"

30 2OB32 - STF LOUNGE - N
1/4" = 1'-0"

28 2VT01 - STAIR 1 - W
1/4" = 1'-0"



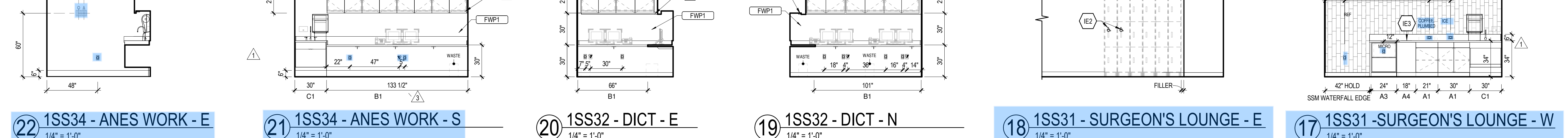
27 1SS14 - LOCKER - W
1/4" = 1'-0"

26 1SS14 - LOCKER - N
1/4" = 1'-0"

25 1SS13 - STAFF LOUNGE - N
1/4" = 1'-0"

24 1SS11 - SOILED WORK - W
1/4" = 1'-0"

23 1SS35 - CLEAN WORK - N
1/4" = 1'-0"



22 1SS34 - ANES WORK - E
1/4" = 1'-0"

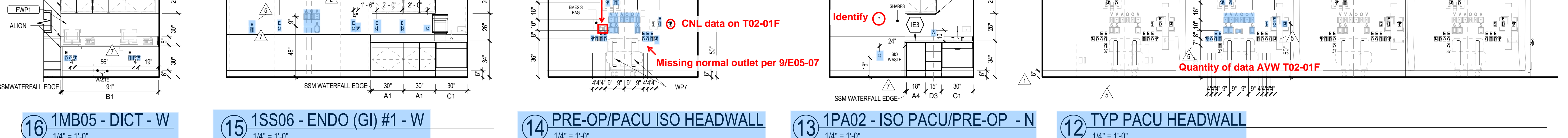
21 1SS34 - ANES WORK - S
1/4" = 1'-0"

20 1SS32 - DICT - E
1/4" = 1'-0"

19 1SS32 - DICT - N
1/4" = 1'-0"

18 1SS31 - SURGEON'S LOUNGE - E
1/4" = 1'-0"

17 1SS31 - SURGEON'S LOUNGE - W
1/4" = 1'-0"



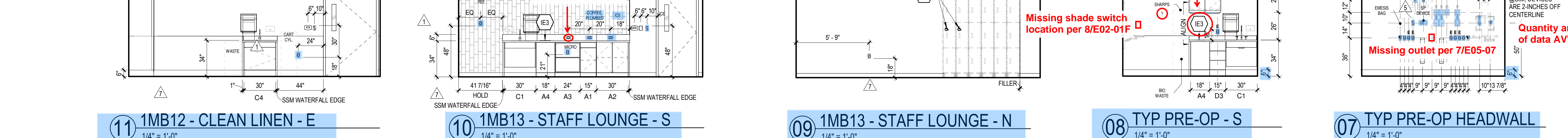
16 1MB05 - DICT - W
1/4" = 1'-0"

15 1SS06 - ENDO (GI) #1 - W
1/4" = 1'-0"

14 PRE-OP/PACU ISO HEADWALL
1/4" = 1'-0"

13 1PA02 - ISO PACU/PRE-OP - N
1/4" = 1'-0"

12 TYP PACU HEADWALL
1/4" = 1'-0"



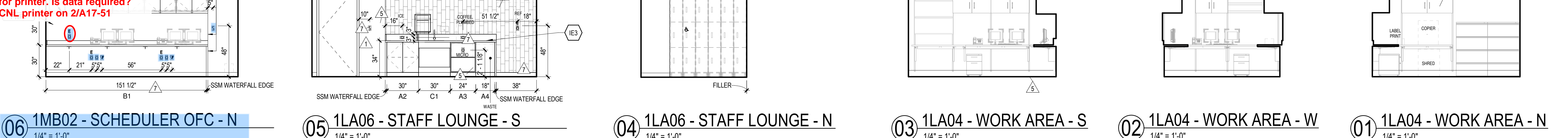
11 1MB12 - CLEAN LINEN - E
1/4" = 1'-0"

10 1MB13 - STAFF LOUNGE - S
1/4" = 1'-0"

09 1MB13 - STAFF LOUNGE - N
1/4" = 1'-0"

08 TYP PRE-OP - S
1/4" = 1'-0"

07 TYP PRE-OP HEADWALL
1/4" = 1'-0"



06 1MB02 - SCHEDULER OFC - N
1/4" = 1'-0"

05 1LA06 - STAFF LOUNGE - S
1/4" = 1'-0"

04 1LA06 - STAFF LOUNGE - N
1/4" = 1'-0"

03 1LA04 - WORK AREA - S
1/4" = 1'-0"

02 1LA04 - WORK AREA - W
1/4" = 1'-0"

01 1LA04 - WORK AREA - N
1/4" = 1'-0"

INTERIOR ELEVATION GENERAL NOTES

1. SEE ELECTRICAL FOR ELECTRICAL OUTLET, DATA OUTLET, AND JUNCTION BOX SPECIFICATIONS. OUTLETS ARE SHOWN HERE FOR PLACEMENT COORDINATION ONLY.

2. REFER TO A18 SERIES FOR DEVICE DIMENSIONAL CONTROL PLANS.

INTERIOR ELEVATION LEGEND

ATTANIA OWNER FURNISHED EQUIPMENT DESIGNATION. REFER TO OWNER EQUIPMENT MANUAL FOR SPECIFICATION. REFER TO A-17 SERIES FOR AN ABBREVIATED SCHEDULE.

TAT1 TOILET ACCESSORY. REFER TO A43-01 FOR LEGEND.

OWNER FURNISHED ITEM/EQUIPMENT

CONTRACTOR FURNISHED ITEM/EQUIPMENT

XXX FINISH MATERIAL TAG

MISC. EQUIPMENT MOUNTING HEIGHTS

MARKER BOARD AND TACK BOARD

COAT RACK AND SHELF

CONTROL

VAC

VAC SL

TO OPERATION

ELAPSED TIME CLOCK

FILM ILLUMINATOR

FILM ILLUMINATOR

SHARPS CONTAINER

OTOSCOPE

SPHYGMOMANOMETER

<<< Indicates Sheet Keynote on Plan

IE2 PROVIDE ADA DECAL (10% OF LOCKERS)

IE3 PROVIDE 12" STAINLESS STEEL GROMMET

IE5 UNDERCABINET LIGHTING

IE11 ETCHED 3"FORM DIRECT GLUED TO FULL HEIGHT CUSTOM GRAPHIC WALL. PROTECTION. ETCHES TO BE 1/4" DEEP AND 1" WIDE. ARCHITECT TO PROVIDE CAD DRAWINGS OF 3"FORM TO GENERAL CONTRACTOR FOR FABRICATION.

IE12 PROVIDE SCHLUTER SCHIENE AND ALIGN WITH EDGE OF BACKSLASH