



The Jane Doe
FOUNDATION
EMPOWER. EDUCATE. HEAL.



EMOTIONAL

Manipulation TACTICS



Recognize.
Understand.
Protect your
peace. ♥

You are not
overreacting.
You are
protecting
yourself.



Knowledge is power.
Awareness is freedom. ♥



EXPLORING EMOTIONAL MANIPULATION TACTICS



01

Emotional manipulation is a tactic used by some individuals to control or manipulate others through the use of emotions such as guilt, fear, or shame. It can be a destructive and harmful behavior that can have serious consequences on the emotional well-being of the individuals being manipulated.

02

For example, one common form of emotional manipulation is gaslighting, where the manipulator tries to make the victim doubt their own feelings, thoughts, and reality. This can lead to the victim feeling confused, anxious, and even questioning their own sanity. Gaslighting is often used as a way to gain control over someone and make them more dependent on the manipulator.

03

Emotional manipulation can occur in various relationships, including romantic relationships, friendships, family dynamics, and even in the workplace. It is important to recognize the signs of emotional manipulation and set boundaries to protect yourself from being manipulated.

04

If you suspect that you are being emotionally manipulated, it is important to seek support from trusted friends, family members, or a mental health professional. Remember that you deserve to be treated with respect and should not tolerate any form of manipulation in your relationships.

05

Lastly, emotional manipulation is a harmful behavior that can have serious consequences on one's emotional well-being. It is important to recognize the signs of manipulation and seek support to protect yourself from being manipulated. Remember that you deserve healthy and respectful relationships.

GASLIGHTING



Gaslighting is a subtle yet harmful form of psychological manipulation that can deeply affect a person's sense of reality, self-worth, and mental well-being. The term "gaslighting" originates from a play and its subsequent film adaptation called "Gas Light," in which a husband manipulates his wife into doubting her perceptions and sanity. This behavior is now commonly used to describe situations where one person attempts to control another by making them question their own thoughts, feelings, and experiences.

EXAMPLE 1:

Minimizing or Invalidating Feelings: Imagine a scenario where a person expresses their hurt feelings to their partner after they made a hurtful comment. Instead of acknowledging the impact of their words, the partner responds with phrases like, "You're too sensitive," "You're overreacting," or "I was just joking; you're being dramatic." This dismissal of the other person's emotions invalidates their feelings and can make them doubt the validity of their hurt.



EXAMPLE 2:

Shifting Blame and Denying Reality: In this scenario, a co-worker sabotages a team project, leading to its failure. When confronted about their actions, the co-worker denies any wrongdoing and shifts the blame onto the person who called them out. They might say things like, "You must have misunderstood," "I never said that," or "You're just trying to make me look bad." By distorting the truth and turning the blame back on the victim, the gaslighter avoids accountability and confuses the victim, making them question their memory and judgment.



If you recognize any signs of gaslighting in your relationships or interactions, it is essential to set boundaries, seek support from trusted individuals, and consider speaking to a mental health professional.

Passive-Aggressive Behavior



Passive-aggressive behavior is a common yet damaging form of communication that can create confusion, frustration, and discord in relationships. Unlike overt aggression, which is direct and confrontational, passive-aggressive behavior is characterized by indirect resistance, avoidance, and subtle forms of hostility. This elusive form of communication can be challenging to detect but can significantly negatively impact interpersonal dynamics.

EXAMPLE ONE: THE SILENT TREATMENT

Imagine a scenario where a friend is upset with you but refuses to express their feelings openly. Instead of addressing the issue directly, they give you the silent treatment—ignoring your calls and messages and avoiding attempts to engage in conversation. You can sense their disapproval and resentment despite their silence, leaving you feeling confused and dismissed.

EXAMPLE TWO: BACKHANDED COMPLIMENTS

In this scenario, a co-worker continuously undermines your achievements and abilities through subtle, backhanded compliments. For example, they might say, "You did a good job on the presentation, considering how nervous you usually get," or "You're pretty smart for someone who didn't go to an Ivy League school." These seemingly positive remarks carry an underlying tone of criticism and diminish your accomplishments while masking their true intentions.

Passive-aggressive behavior can manifest in various forms, including procrastination, intentional inefficiency, sarcasm, and disguised hostility.

Blaming



Blame is a complex and often destructive interpersonal dynamic that can strain relationships, erode trust, and hinder personal growth. At its core, blaming involves assigning responsibility for negative outcomes or circumstances to others rather than taking ownership of one's actions or decisions. This subtle yet influential behavior can have far-reaching consequences, both in individual interactions and broader social contexts.

EXAMPLE ONE: RELATIONSHIP BLAME GAME

In a romantic relationship, partners might engage in a persistent cycle of blame where each party deflects responsibility for issues or conflicts onto the other. For instance, one partner might blame the other for their unhappiness, arguing that their partner's behavior or choices cause their dissatisfaction. This blaming behavior can create a toxic dynamic of defensiveness, resentment, and emotional distance, making it difficult to address underlying issues and find productive solutions.

EXAMPLE TWO: WORKPLACE BLAME CULTURE

In a workplace setting, a culture of blame can emerge when leaders or team members consistently point fingers and shift responsibility for mistakes, errors, or failures onto others. Instead of fostering a collaborative and supportive environment where individuals take accountability for their actions, a blame culture can create fear, mistrust, and a culture of scapegoating. This can stifle innovation, teamwork, and open communication, ultimately impeding organizational growth and success.

Blame often serves as a defense mechanism, allowing individuals to protect their self-image, avoid feelings of guilt or shame, and preserve their sense of control in challenging situations.



The Silent Treatment



The silent treatment is a passive-aggressive behavior that involves intentionally ignoring or refusing to communicate with another person as a form of punishment or control. This tactic can be used in various relationships, from personal to professional, to express disapproval, assert power, or manipulate emotions. While it may seem like a simple act of silence, the silent treatment can have profound effects on both the individual giving and receiving it.

EXAMPLE ONE: PERSONAL RELATIONSHIPS

In a romantic partnership, one partner may resort to the silent treatment as a response to a perceived offense or disagreement. By withdrawing communication, avoiding eye contact, or giving short, non-committal responses, the silent partner exerts control over the emotional atmosphere of the relationship. This behavior can leave the other partner feeling confused, anxious, and resentful, as they struggle to understand the reasons behind the sudden withdrawal of communication.

EXAMPLE TWO: WORKPLACE DYNAMICS

In a professional setting, the silent treatment can manifest when a colleague or supervisor deliberately ignores emails, messages, or requests from a team member. This form of passive-aggressive behavior can create a toxic work environment, erode trust, and impede collaboration. The targeted individual may feel isolated, undervalued, or excluded, leading to decreased morale, productivity, and job satisfaction.

The silent treatment often stems from underlying issues such as unresolved conflicts, unexpressed emotions, or a desire for control.

Lying



Lying is a common yet complex form of deception that involves deliberately conveying false information with the intention to mislead or manipulate others. While lying may be perceived as a means to avoid punishment, protect oneself, or gain advantage, it carries significant ethical, social, and psychological implications. Understanding the nature of lying and its consequences is essential for fostering honesty, trust, and integrity in personal and professional relationships.

EXAMPLE ONE: WHITE LIES IN SOCIAL INTERACTIONS

White lies are often considered harmless fibs told to spare someone's feelings or avoid causing unnecessary harm. Individuals may resort to white lies to maintain harmony, uphold social norms, or protect relationships in social interactions. For instance, someone may compliment a friend on their new haircut to avoid hurting their feelings, even if they don't particularly like it. While seemingly innocuous, white lies can blur the line between honesty and deception, leading to confusion, mistrust, and a lack of authentic communication.

EXAMPLE TWO: DECEPTIVE PRACTICES IN BUSINESS

In the corporate world, lying and deception can have far-reaching consequences for individuals and organizations. Companies may engage in misleading advertising, false claims, or financial fraud to increase profits or gain a competitive edge. Such deceptive practices not only harm consumer trust and loyalty but also damage the organization's reputation and credibility. Moreover, lying in the workplace—such as falsifying reports or misrepresenting data—can erode team dynamics, morale, and overall productivity.



The act of lying is rooted in various motivations, including fear, insecurity, self-preservation, or a desire for personal gain.

Love Bombing



Love bombing is a term used to describe an intense and overwhelming display of affection, adoration, and attention in the early stages of a romantic relationship or friendship. While it may initially seem like a whirlwind of positive reinforcement and affection, love bombing can be a form of emotional manipulation that seeks to establish control, gain trust, and create dependency on the part of the recipient. Understanding the impact of love bombing is crucial for recognizing the signs of manipulation and maintaining healthy boundaries in relationships.

EXAMPLE ONE: SARAH AND MARK'S RELATIONSHIP

Sarah and Mark met at a social event and quickly hit it off. Mark showered Sarah with constant compliments, gifts, and attention, making her feel special and loved. Sarah was swept off her feet by Mark's gestures of affection and believed she had found her perfect partner. However, as the relationship progressed, Mark's love-bombing tactics began to shift. He became controlling, possessive, and manipulative, using withdrawal of affection and emotional blackmail to keep Sarah under his control. Sarah started feeling anxious, confused, and emotionally dependent on Mark, unable to see the manipulation hidden behind the façade of love bombing.

EXAMPLE TWO: WORKPLACE MANIPULATION

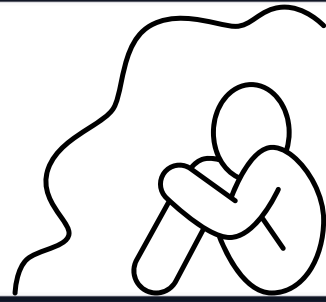
Love bombing can also take place in professional settings, where a manipulative colleague or supervisor may use excessive praise, flattery, and gestures of appreciation to gain favor, influence decisions, or maintain power dynamics. By creating a false sense of camaraderie and trust through love bombing tactics, the manipulator can exploit vulnerabilities, manipulate situations, and control outcomes to their advantage. Subordinates may feel pressured to reciprocate the positive reinforcement and may become increasingly reliant on the manipulator's approval, leading to a skewed power dynamic and potential exploitation in the workplace.



LOVE



Isolation



Isolation is a powerful tool often used in emotional manipulation to control, manipulate, and dominate individuals by cutting them off from their support systems, resources, and external perspectives. This form of manipulation can make the victim feel isolated, dependent, and vulnerable, paving the way for the manipulator to exert greater influence and control over their emotions and behaviors. Understanding the impact of isolation in manipulation is crucial for recognizing the signs and maintaining healthy boundaries in relationships.

EXAMPLE ONE: JANE AND ALEX'S RELATIONSHIP

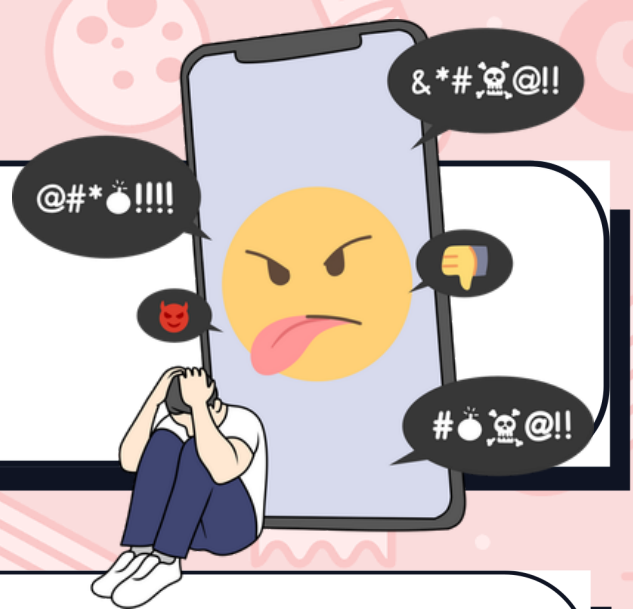
Jane and Alex were in a seemingly loving and committed relationship. However, over time, Alex started isolating Jane from her friends, family, and support network. He would discourage her from spending time with others, constantly criticizing her loved ones, and creating conflicts that led to estrangement from her social circle. Jane gradually found herself isolated, emotionally dependent on Alex, and without the external support or perspective she once had. Alex used this isolation to exert control over Jane's emotions, behaviors, and decisions, creating a sense of power imbalance and dependency in the relationship.

EXAMPLE TWO: WORKPLACE MANIPULATION

In a professional setting, manipulation through isolation can occur when a colleague or supervisor limits access to information, resources, or opportunities, cutting off individuals from crucial networks or support systems. By creating a sense of exclusivity, dependency, or secrecy, the manipulator can isolate individuals from potential allies, mentors, or alternative perspectives, making them reliant on the manipulator for access to vital resources or opportunities. This form of isolation can lead to increased vulnerability, dependency, and susceptibility to manipulation in the workplace dynamic.



Bullying



Bullying is a pervasive issue that can take on various forms, including physical, verbal, and emotional aggression. One common but often overlooked aspect of bullying is emotional manipulation, where bullies use psychological tactics to control, intimidate, and harm their victims. Emotional manipulation in bullying can have serious and lasting effects on the mental health and well-being of individuals, making it essential to recognize and address this harmful behavior effectively.

EXAMPLE ONE: SCHOOL BULLYING

Sarah, a high school student, found herself at the receiving end of emotional manipulation from a group of classmates. They used tactics like spreading false rumors about her, excluding her from social events, and turning her friends against her. By eroding Sarah's self-esteem and isolating her socially, the bullies aimed to exert control over her and assert their dominance within the social hierarchy of the school. Sarah's emotional well-being suffered as a result of the constant manipulation, leading to feelings of anxiety, loneliness, and self-doubt.

EXAMPLE TWO: INTIMATE RELATIONSHIP MANIPULATION

Emotional manipulation can also manifest in intimate relationships, where one partner seeks to control and assert power over the other through manipulative tactics. For instance, consider a scenario where Alex emotionally manipulates their partner, Casey, by using tactics like the silent treatment, gaslighting, and invalidation of Casey's emotions. By twisting facts, playing on Casey's insecurities, and creating a sense of dependency, Alex exerts control over the dynamics of the relationship, leaving Casey feeling confused, anxious, and emotionally drained.

Emotional manipulation in bullying, whether at school or in relationships, can have profound effects on the victim's mental health, self-esteem, and overall well-being.

Blackmail



Blackmail is a form of emotional manipulation that hinges on the threat of revealing sensitive or damaging information to coerce someone into complying with the blackmailer's demands. It can exert a significant psychological toll on the victim, causing fear, anxiety, guilt, and a sense of powerlessness. Understanding blackmail as a manipulative tactic is essential for recognizing the warning signs, protecting oneself, and addressing the emotional and ethical implications it carries.

EXAMPLE ONE: WORKPLACE BLACKMAIL

In a professional setting, Emily finds herself targeted by a colleague, Michael, who discovers a minor error she made in a report. Michael seizes this opportunity to emotionally manipulate Emily by threatening to report her mistake to their supervisor unless she takes on additional tasks that benefit him. Feeling cornered and anxious about the potential repercussions of the report, Emily reluctantly agrees to comply with Michael's demands, sacrificing her time, energy, and well-being to avoid the perceived threat to her reputation at work.

EXAMPLE TWO: RELATIONSHIP BLACKMAIL

Samantha's relationship with her partner, Chris, takes a troubling turn when Chris engages in emotional manipulation through blackmail. Aware of Samantha's fear of abandonment, Chris exploits this vulnerability by threatening to leave her if she does not conform to his expectations and desires. Chris uses the threat of ending the relationship as a means to control Samantha's actions, emotions, and decisions, leaving her feeling trapped, insecure, and emotionally manipulated.

Victims may experience heightened anxiety, stress, feelings of helplessness, and a loss of trust in themselves and others.

Boundary Violations



Emotional manipulation through boundary violations is a pervasive tactic used to control, intimidate, or manipulate others by infringing upon their personal space, emotions, or autonomy. This form of manipulation can cause significant distress, confusion, and feelings of powerlessness in the victim, leading to a breakdown in trust and emotional well-being. In this section, we delve into the concept of emotional manipulation through boundary violations, outline what it entails, and provide two real-life examples—one in a professional context and the other within a personal relationship.

EXAMPLE ONE: PROFESSIONAL CONTEXT

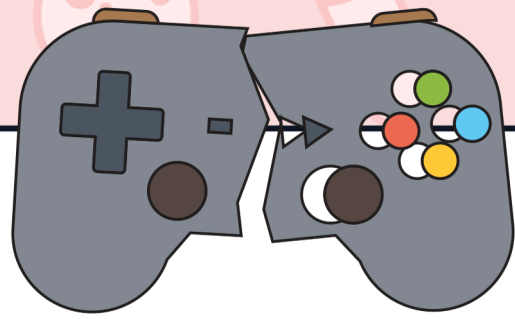
Sarah, a dedicated employee at a multinational corporation, experiences emotional manipulation through boundary violations by her supervisor, Peter. Despite Sarah clearly communicating her need for work-life balance and personal time, Peter consistently assigns her last-minute projects, disregarding her boundaries and encroaching on her personal time. Peter's relentless demands and dismissive attitude toward Sarah's boundaries create a toxic work environment, leading to increased stress, burnout, and feelings of powerlessness in Sarah.

EXAMPLE TWO: PERSONAL RELATIONSHIP

In a personal relationship, Alex faces emotional manipulation through boundary violations from their partner, Jamie. Jamie frequently belittles Alex's opinions, invalidates their feelings, and disregards their need for personal space and autonomy. By dismissing Alex's boundaries and exerting control over their emotions and decisions, Jamie engenders a sense of self-doubt, insecurity, and emotional distress in Alex, eroding the trust and intimacy within the relationship.

Victims of such manipulation may experience a range of negative emotions, including confusion, guilt, anxiety, and a diminished sense of self-worth.

Controlling Finances



Controlling finances in a relationship is a form of emotional manipulation that can have profound effects on both individuals involved. This type of manipulation involves one partner exerting control over the other's financial resources, decisions, and independence, often leading to feelings of powerlessness, insecurity, and dependency. In this section, we delve into the concept of emotional manipulation through controlling finances, explain what it entails, and provide two real-life examples to illustrate its impact on individuals and relationships.

EXAMPLE ONE: FINANCIAL CONTROL IN MARRIAGE

John and Emma are married, and John controls all the finances in their household. He manages the bank accounts, pays the bills, and monitors Emma's spending closely. Whenever Emma requests money for personal expenses or questions John's financial decisions, he becomes defensive and dismissive, making Emma feel guilty and incompetent. John's financial control restricts Emma's access to financial resources and diminishes her confidence and independence in managing her finances.

EXAMPLE TWO: FINANCIAL MANIPULATION IN DATING

Sarah and Alex have been in a relationship for several months, and Alex insists on paying for all their dates, gifts, and outings. While this may seem generous on the surface, Alex uses his financial generosity to control and manipulate Sarah's behavior and choices. Whenever Sarah expresses a desire to pay for something or contribute financially, Alex dismisses her efforts and asserts his dominance, creating a dynamic of dependence and imbalance in their relationship. Sarah feels indebted to Alex and struggles to assert her own financial independence and autonomy.

The unequal distribution of financial power can lead to resentment, distrust, and conflict within the relationship, affecting communication, intimacy, and mutual respect.

Guilt



Emotional manipulation through guilt is a powerful tactic often used by individuals to control, manipulate, or influence the behavior and emotions of others. It involves eliciting feelings of guilt in a person to compel them to act in a certain way, meet specific demands, or conform to the manipulator's expectations. In this section, we explore the concept of emotional manipulation through guilt, explain what it entails, and provide two real-life examples to illustrate its impact on individuals and relationships.

EXAMPLE ONE: FRIENDSHIP GUILT-TRIPPING

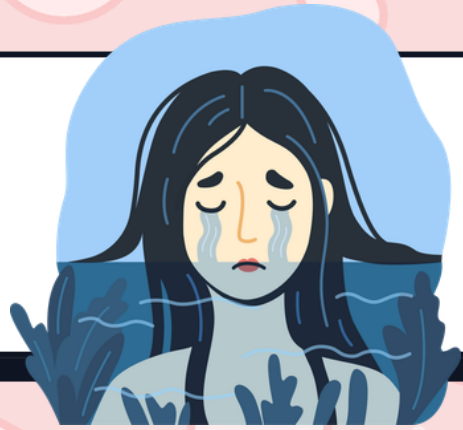
Sarah and Emma have been friends for years, and Sarah often guilt-trips Emma into doing things she doesn't want to do. For instance, when Emma declines an invitation to a social event due to prior commitments, Sarah responds with hurtful comments like, "I thought you were a true friend who would always be there for me." This emotional manipulation tactic puts Emma in a difficult position, making her feel guilty for prioritizing her own needs and boundaries over Sarah's expectations.

EXAMPLE TWO: ROMANTIC RELATIONSHIP GUILT MANIPULATION

John and Rachel are in a romantic relationship, and John uses guilt manipulation to control Rachel's behavior and choices. Whenever Rachel expresses her opinions or desires that differ from John's expectations, he responds with statements like, "I do so much for you, and this is how you repay me?" or "If you loved me, you would do what I ask." These guilt-inducing remarks create a sense of obligation and fear in Rachel, making her suppress her own needs and feelings to appease John's demands.

This pattern of manipulation can erode trust, communication, and mutual respect in relationships, leading to resentment, dependency, and emotional disconnection.

Victimhood



Emotional manipulation through victimhood is a complex and often subtle tactic used by individuals to garner sympathy, control, or power by portraying themselves as perpetual victims. This manipulative behavior involves claiming victim status to manipulate others' perceptions, justify harmful actions, or avoid accountability for one's behavior. In this section, we delve into the concept of emotional manipulation through victimhood, explain its implications, and provide two real-life examples to shed light on its impact within personal relationships and social interactions.

EXAMPLE ONE: VICTIM MENTALITY IN A WORKPLACE SETTING

Sarah works in a competitive corporate environment where her colleague, Jack, often plays the victim to avoid taking responsibility for his mistakes. Whenever a project fails or deadlines are missed, Jack blames external factors beyond his control, portrays himself as the underdog fighting against unfair circumstances, and elicits sympathy from his team and superiors. This victimhood narrative shields him from criticism, allowing Jack to evade accountability and manipulate feelings of guilt or empathy among his colleagues.

EXAMPLE TWO: VICTIM PLAYING IN A ROMANTIC RELATIONSHIP

Emily and Alex are in a romantic relationship where Emily frequently adopts a victim mentality to manipulate Alex's behavior and emotions. When conflicts arise or disagreements occur, Emily exaggerates her grievances, portrays herself as the wounded party, and uses emotional manipulation to make Alex feel guilty or responsible for her emotional well-being. This victim playing not only distorts the dynamics of their relationship but also undermines trust, communication, and mutual respect as Alex becomes increasingly burdened by Emily's manipulative behavior.

The constant portrayal of victimhood can erode trust, communication, and reciprocity within relationships, leading to a breakdown in empathy, genuine connection, and mutual understanding.

Denial



Emotional manipulation through denial is a subtle yet potent tactic employed by individuals to evade responsibility, deflect accountability, or control narratives by denying uncomfortable truths, emotions, or facts. This manipulative behavior revolves around distorting reality, gaslighting others, or minimizing the impact of one's actions to maintain power, control, or a sense of superiority. In this section, we delve into the concept of emotional manipulation through denial, elucidate its implications, and provide two real-life examples to shed light on its influence within personal relationships and social dynamics.

EXAMPLE ONE: DENIAL OF EMOTIONS IN A FRIENDSHIP

Julie and Rachel have been friends for years, but recently, Julie noticed a pattern where Rachel consistently denies or minimizes her emotions and experiences when they have disagreements. Whenever Julie expresses her feelings or concerns, Rachel dismisses them as unimportant, accuses Julie of overreacting, or shifts the blame onto Julie for being overly sensitive. By denying the validity of Julie's emotions and gaslighting her feelings, Rachel manipulates the dynamics of their friendship, invalidates Julie's experiences, and exerts control over the narrative by distorting emotional truths.

EXAMPLE TWO: DENIAL AND DEFLECTION IN A ROMANTIC RELATIONSHIP

Mark and Laura are in a romantic relationship where Mark frequently engages in emotional manipulation through denial by evading accountability for his actions and dismissing Laura's concerns. Whenever conflicts arise or disagreements occur, Mark minimizes the impact of his behavior, denies wrongdoing, and deflects criticism by distorting facts or gaslighting Laura's perceptions. This pattern of denial and deflection prevents them from addressing underlying issues, communicating effectively, or fostering mutual trust as Mark's manipulative tactics erode the foundations of their relationship and create a cycle of emotional turmoil and mistrust.

Emotional manipulation through denial is a pervasive and damaging tactic that distorts reality, undermines trust, and erodes emotional well-being within relationships and social interactions.

Humiliation



Emotional manipulation through humiliation is a toxic tactic used to exert control, belittle others, and undermine their self-worth and dignity. This insidious form of manipulation involves making someone feel embarrassed, degraded, or ashamed as a means of gaining power and control over them. In this section, we delve into the concept of emotional manipulation through humiliation, explore its effects on individuals, and provide two real-life examples to shed light on how it can manifest in relationships and social dynamics.

EXAMPLE ONE: WORKPLACE HUMILIATION

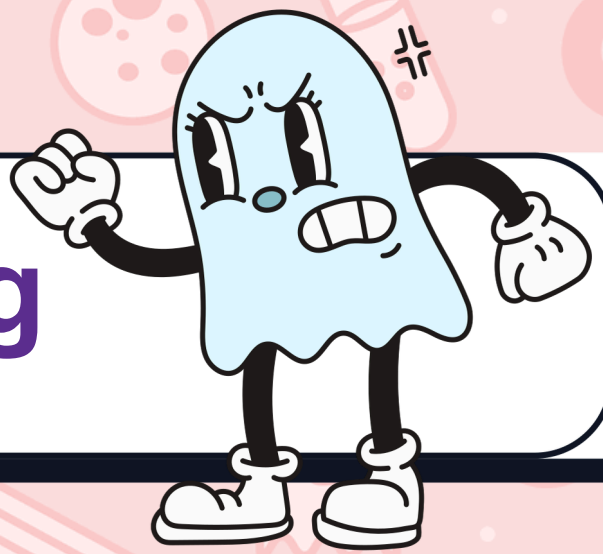
Sarah, a new company employee, is constantly humiliated by her supervisor, David. During team meetings, David frequently criticizes Sarah's ideas, dismisses her contributions, and belittles her in front of her colleagues. He makes snide remarks about her work ethic, competence, and professionalism, creating a hostile and demeaning work environment for Sarah. By using humiliation as a tool to assert his authority and control over Sarah, David undermines her confidence, erodes her self-esteem, and fosters a culture of fear and intimidation in the workplace.

EXAMPLE TWO: HUMILIATION IN A RELATIONSHIP

Emma and Jake have been in a romantic relationship for several years, but recently, Emma notices a troubling pattern where Jake consistently uses humiliation to manipulate her. During arguments, Jake resorts to name-calling, mocking Emma's appearance, intelligence, or choices, and making hurtful comments about her in front of others. By humiliating Emma, Jake exerts power and control over her emotions, erodes her self-worth, and creates a dynamic where Emma feels small, powerless, and unworthy of respect.

This cycle of emotional manipulation through humiliation damages their relationship, erodes trust, and undermines Emma's sense of autonomy and dignity.

Threatening



Emotional manipulation through threats is a coercive tactic used to instill fear, intimidate, and control others. This form of manipulation involves using explicit or implied threats of harm, punishment, or retaliation to dominate individuals and force compliance. Such behavior can cause deep psychological distress, undermine autonomy, and create an environment of fear and helplessness. In this section, we explore the concept of emotional manipulation through threats, its damaging impact on individuals, and provide two real-life examples to illustrate how it can manifest in relationships and social interactions.

EXAMPLE ONE: WORKPLACE THREATS

Jason, a manager at a large corporation, is known for his intimidating and threatening behavior toward his subordinates. Whenever an employee raises concerns or challenges his decisions, Jason uses threatening language such as, "If you don't follow my orders, you'll be fired," or "I'll make sure you never get promoted in this company." By using threats of job loss, professional sabotage, and career stagnation, Jason manipulates his employees into compliance, obedience, and silence. The atmosphere of fear and intimidation created by his threats undermines trust, collaboration, and psychological safety in the workplace, leading to anxiety, burnout, and reduced productivity among employees.

EXAMPLE TWO: THREATS IN A RELATIONSHIP

Sarah and Mark have been in a relationship for years, but lately, Sarah notices a troubling pattern where Mark uses threats to manipulate her. During arguments or disagreements, Mark resorts to threatening Sarah with physical harm, abandonment, or emotional blackmail to control her behavior or decision-making. By using threats to instill fear and compliance in Sarah, Mark exerts power and control over her emotions, choices, and autonomy, creating a climate of coercion, insecurity, and emotional abuse. Sarah's fear of the consequences of defying Mark's threats leads to a cycle of manipulation, compliance, and fear in their relationship, eroding trust, communication, and emotional well-being.

Criticism



Emotional manipulation through criticism is a common tactic manipulators use to undermine, control, and gain power over others. This manipulation involves disparaging remarks, derogatory comments, and negative feedback aimed at diminishing an individual's self-worth, confidence, and autonomy. In this section, we explore the concept of emotional manipulation through criticism, its detrimental effects on individuals, and provide two real-life examples to illustrate how it can manifest in relationships and social interactions.

EXAMPLE ONE: WORKPLACE CRITICISM

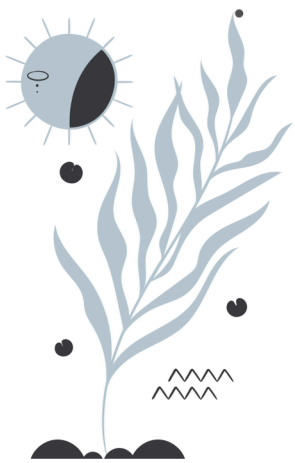
Emily works in a competitive corporate environment where her supervisor, John, often uses criticism as a means of control and manipulation. During team meetings or performance reviews, John frequently singles out Emily for her mistakes, shortcomings, or perceived inadequacies, criticizing her work, decisions, or communication style in front of colleagues. By subjecting Emily to relentless criticism and negative feedback, John undermines her confidence, credibility, and self-esteem, creating a power dynamic where Emily feels vulnerable, devalued, and powerless. The pervasive atmosphere of criticism and micromanagement cultivated by John hinders Emily's professional growth, creativity, and well-being, leading to stress, anxiety, and diminished performance at work.

EXAMPLE TWO: CRITICISM IN A RELATIONSHIP

Emma and Alex have been in a romantic relationship for years, but Emma notices a troubling pattern where Alex uses criticism to manipulate and control her. Alex frequently criticizes Emma's choices, opinions, appearance, or behavior during disagreements or conflicts, employing hurtful and derogatory language to diminish her self-worth and confidence. By weaponizing criticism as a means of control and dominance, Alex instills self-doubt, guilt, and fear in Emma, creating a toxic cycle of emotional abuse, dependency, and insecurity. Emma's fear of further criticism or rejection limits her ability to express herself authentically, assert boundaries, or prioritize her emotional well-being—perpetuating a cycle of manipulation, self-doubt, and emotional harm in their relationship.

Reflection Questions

Have I observed any signs of emotional manipulation through criticism in my relationships or social interactions?



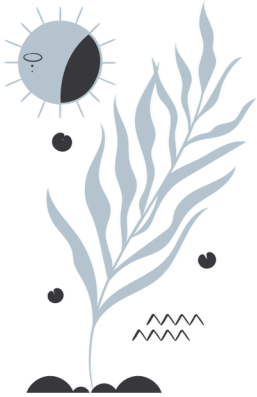
How does constant criticism affect my self-esteem, confidence, and overall well-being?

Do I find myself downplaying my feelings or needs to avoid conflict in relationships?

Reflection Questions

How confident do I feel that I can spot emotional manipulation?

What steps can I take to protect myself from emotional manipulation through criticism and prioritize my emotional well-being and self-worth in interactions with others?



Who is my support network? Who can I turn to for help?