



Citadel Floor Coating Training

August 18, 2023

Agenda



- ✓ Overview - Citadel Floor Finishing Systems
- ✓ High Performance Broadcast Systems - One Day Floors
- ✓ Surface Preparation
- ✓ Patch/Repair & Special Purpose Products
- ✓ Specialty Primers & Basecoats
- ✓ System Comparisons - Base Coat Selection
- ✓ Top Coat Selection + Top Coat Options
- ✓ Best Practices & Key to Successful Installs



Base Coat Demo

Citadel Polyurea 350

Citadel Floor Finishing Systems - Our Advantage

- Complete Systems for Residential, Commercial and Industrial Flooring Markets
- Innovative Product Assortment: Good, Better, Best
- Market Leading Technical and Customer Service Support



Key Flooring Markets Served

Healthcare

- Lobbies
- Cafeterias
- Kitchens
- Labs
- Mechanical rooms
- Restrooms
- Locker rooms
- Emergency rooms
- Hallways

Residential

- Garages
- Interior floors
- Sidewalks
- Patios
- Porches

Animal facilities

- Veterinarian clinics
- Animal hospitals
- Kennels/boarding facilities
- Shelters

Education

- Restrooms
- Kitchens
- Classrooms
- Labs
- Cafeterias
- Locker Rooms
- Mechanical Rooms
- Bleachers
- Hallways

Commercial

- Fire stations
- Kitchens
- Locker rooms
- Restrooms
- Service areas
- Storage areas
- Hallways

Retail

- Automotive showrooms
- Service bays
- Garages
- Restaurants
- Kitchens and prep
- Restrooms
- Stadium concession areas
- Breakrooms
- Locker rooms
- Retail areas

Manufacturing and industrial

- Shop floors
- Warehouse floors
- Manufacturing plants
- Breakrooms
- Loading docks
- Locker rooms
- Machine/maintenance rooms
- Restrooms

Food service

- Restrooms
- Food prep
- Kitchens
- Bar areas
- Dining areas



The Citadel Advantage



Easy and Repeatable, Fast and Durable

- ✓ Easy Application
- ✓ Consistent, Repeatable Results
- ✓ Quick Return to Service
- ✓ Robust Innovative Products



Citadel Floors – One Stop Shop



“Best in Class finishes for high performing decorative flooring in Residential, Commercial and Industrial Markets”.

- Polyurea Basecoats
- Polyaspartic Topcoats
- Urethane Topcoats
- Moisture Vapor Barriers
- Patch & Repair
- Aggregates / Anti-Slip Options
- Sundries & Accessories



The Citadel Advantage – Flooring Center of Excellence

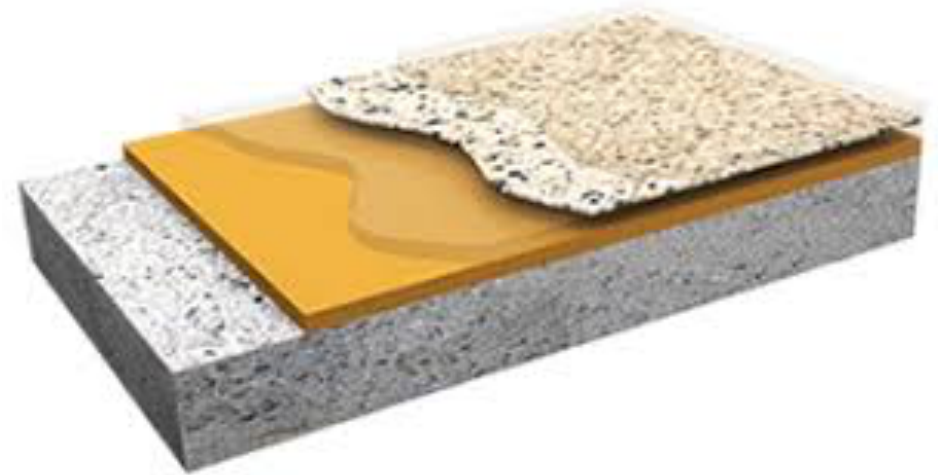
Flooring Center of Excellence integrates customer service, R&D, marketing, technical support, sample production and manufacturing in one location.

- Flooring Center Site, 110,000 sf
- 85,000 sf of Manufacturing
- 5,000 sf of R&D
- Concrete Application Lab
- Full Sample Department
- Built for the Future



Broadcast Flooring Systems

- Base coat provides adhesion to surface and receives broadcast material
- Broadcast material adds decorative effect, durability and anti-slip. Vinyl flake, colored quartz and silica quartz is commonly used.
- Top coat encapsulate the broadcast material and add durability/longevity



Citadel Flooring Installation Process



- Inspect
- Product System Selection
- Surface Preparation
- Patch and Prime
- Product System Installation



Surface Preparation & Substrate Evaluation

No single facet of a concrete coating contributes more to the **success** or **failure** of the application than the evaluation of the substrate and proper surface preparation.

Surface PREPARATION will vary depending upon the requirements of the coating system selected

- Thickness of coating
- Aesthetic value
- Project limitations

Mechanical PREPARATION is the most common method of surface PREPARATION

- Diamond Grinding
- Shot Blasting



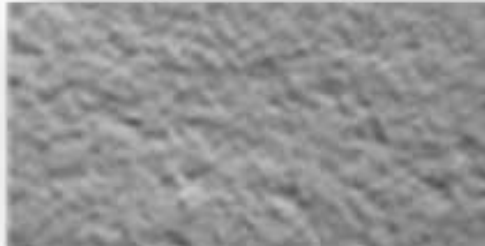
Surface Preparation

Concrete Surface Profile Specifications

CSP 2 (grinding)



CSP 3 (light shotblast)



ICRI: Nine Concrete Surface Profile (CSP) Configurations

- **CSP 1** – acid etched
- **CSP 2** – grinding
- **CSP 3** – light shot blast
- **CSP 4** – light scarification
- **CSP 5** – medium shot blast
- **CSP 6** – medium scarification
- **CSP 7** – heavy abrasive blast
- **CSP 8** – scabbled
- **CSP 9** – heavy scarification



INTERNATIONAL
CONCRETE REPAIR
INSTITUTE


CITADEL[®]
FLOOR FINISHING SYSTEMS

Concrete Surface Inspections

Moisture Testing



How to examine and prepare the concrete substrate prior to resinous flooring installation;

Moisture vapor transmission;
ASTM F2659-23 Preliminary Evaluation Using a
Non-Destructive Electronic Moisture Meter



Concrete Surface Inspections

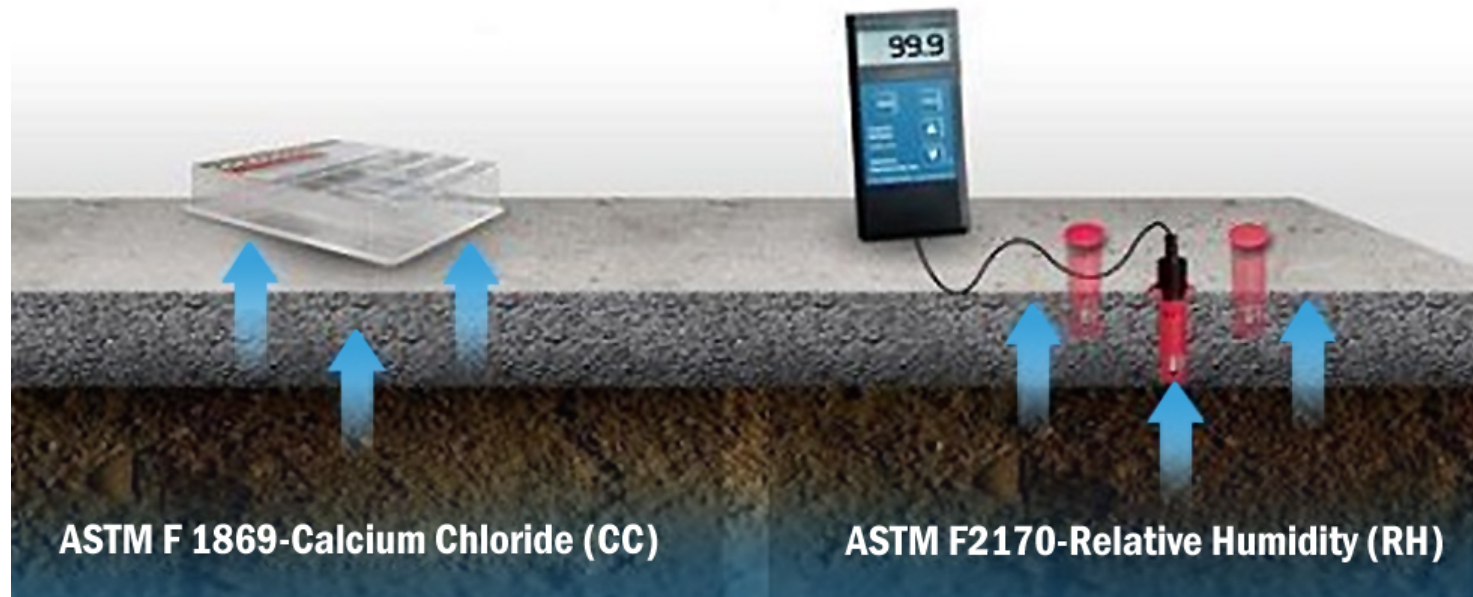
Moisture Testing



How to examine and prepare the concrete substrate prior to resinous flooring installation;

Moisture vapor transmission;
ASTM F 1869 (Calcium Chloride Testing)
ASTM F 2170 (Internal Relative Humidity Testing)

Calcium Chloride vs Relative Humidity Testing



Game Changing Products – Specialty Primers

Ultra Hydro-Stop 100% Solids Vapor Barrier

- One-coat, 100% Solids Epoxy, membrane-forming, moisture vapor control system formulated to bond to concrete with high (or excessive) relative humidity (RH)
- Designed to reduce moisture vapor emission levels from 25 lbs./1000 sq. ft./24 hours to 3lbs./1000 sq. ft./24 hours or less. With a low permeability of 0.09 perms (ASTM E96)
- Citadel UHS is an excellent moisture blocker for virtually all types of flooring, including low permeable flooring
- Ideal for commercial, industrial and institutional applications where moisture vapor control may be an issue



Game Changing Products – Specialty Primers

EP-55 Primer

Citadel® EP 55 is a two component, water-based epoxy primer designed to improve the adhesion of floor coatings over difficult to coat, or marginally prepared substrates. Substrates include, hard-troweled concrete, aluminum and various types of tiles. EP 55 primer can be top coated with most types of floor coating technologies including epoxies and polyurethanes

- Designed to improve the adhesion of floor coatings over difficult to coat, or marginally prepared substrates.
- Excellent as a primer/basecoat for warehouse line striping, zone marking
- Can be top coated after 5 hours and before 7 days
- Compatible with most flooring technologies



Game Changing Products – Patch & Repair

Fortification Formula Polyurea Crack Repair

- Easy Application – 1:1 mix, Self Leveling
- Quick Return to Service
 - Walk on / Grind in 15 minutes
- Cold Temp Cure Down to -5F
- Consistent, Dependable Results



PolyFlex 93

Polyflex-93 is a two component, 100% solids, VOC Compliant, self-leveling flexible control joint filler. It cures rapidly and consistently at temperatures ranging from 0° to 120°F. With a tack-free time of less than 25 minutes, and allows vehicle or foot traffic in one hour. Polyflex-93 can be easily coated over with a wide variety of Citadel products.

- Two component, 100% solids
- Self-leveling flexible
- For control joint filler & cracks*
- Installation temp 0° to 120° F
- Tack free in less than 25 minutes
- Countable to create a seamless floor



PolyFlex 93 – Control Joints or Cracks:



1. • Clean out Joint with diamond blade to provide a clean porous surface.



2. • Insert Backer Rod
• Must be slightly bigger than joint



3. • Overfill with PolyFlex 93
• After firm* shave with razor scraper



Game Changing Products – Patch & Repair

Self Leveling Concrete Patch Compound

- Easy Application – Add Water, Mix and Pour
- Fiber Reinforced for Durability
- Feather Edge to 4" thick* (thickness will affect recoat time)
- Quick Return to Service – Walk on in 30 minutes, Drive on in 2 hrs.



Patching & Repairing Products Ultra Hydro Stop Demo

One-Day

Grind & Seal Flooring System

- Mechanically abrade the floor by diamond grinding to achieve a final 80–120 grit finish, reference profile CSP-2 according to ICRI.
- Apply clear **RG-70** at a rate of 250 to 300 ft² per gallon
- Apply Polyurea1 HD top with UDP at a400 to 500 ft² coverage rate
- *Add Durability Plus 220 sieve Polycarbonate for additional abrasion resistance at a rate of to desired effect, suggest sample to define.



One-Day

Smooth Pigmented Flooring

- Base coat of Polyurea 350 at 250 ft² per gallon
- Pigmented **RG-70**, RG80X, or UL80
- Pigmented **RG-70**, RG80X, or UL80
- Pigmented Polyurea1 HD top with Ultra Durability Plus 220sieve Polycarbonate for additional abrasion resistance



One-Day

Silica Broadcast Flooring (Shop/Stout)



- Base coat of Polyurea 350 @ 100 to 150 ft² per gallon
- Broadcast to rejection rate is ½ lb per ft²
- Allow 2-4 hours cure time before cleaning and collecting excess
- Intermediate coat of pigmented RG80x or UL80 @ 100 ft² pr gln
- Broadcast to rejection rate is ½ lb per sq ft.
- Allow 2-4 hours cure time before collecting excess
- Grout coat of pigmented RG80x or UL80 @ 100 ft² pr gln
- *Optional but highly recommended application of clear Poly1 HD for additional abrasion & chemical resistance



One-Day Color Quartz Broadcast Flooring



- Base coat of Polyurea 350 @ 100 to 150 ft² per gallon
- Broadcast to rejection rate is ½ lb per ft²
- Allow 2-4 hours cure time before cleaning and collecting excess
- Intermediate coat of clear RG80x or UL80 @ 100 ft² pr gln
- Broadcast to rejection rate is ½ lb per sq ft.
- Allow 2-4 hours cure time before collecting excess
- Grout coat of clear RG80x or UL80 @ 100 ft² pr gln
- *Optional but highly recommended application of clear Poly1 HD for additional abrasion & chemical resistance



One-Day

Broadcast Flooring – Decorative ¼” Chip



- Base coat of Polyurea 350 at 250 ft² per gallon
- Broadcast to rejection rate is 1 lb per 6 sq ft.
- Base coat must be completely buried
- Allow 2-4 hours cure time before collecting excess
- Application of clear top coat(s) will dictate final profile

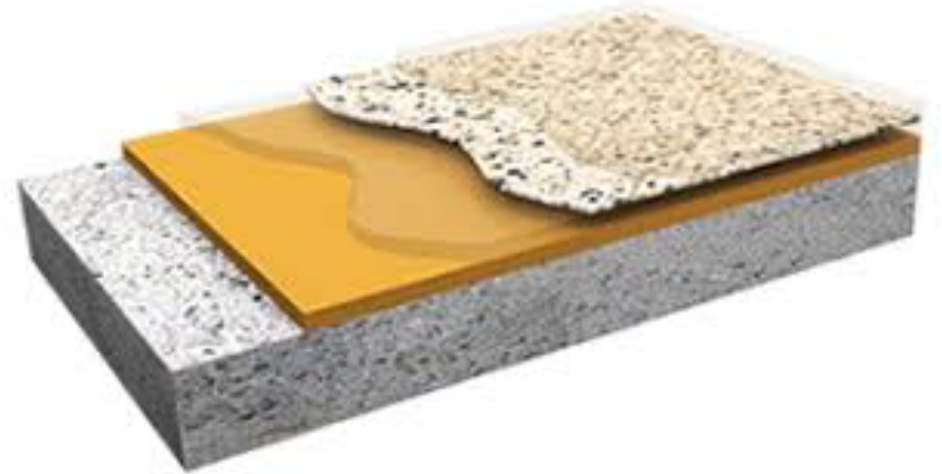


Citadel's Market Leading 1-Day Floor

"Our Legacy Flooring System"



1. Polyurea 350 basecoat
 2. Broadcast material of your choice
 3. RG-80x topcoat
- Quick return to service, saves time and reduces disruptions
 - Versatile. Provides appealing appearance across a wide range of floors.
 - Tough, durable, color stable finish that protects against the chemicals, abuse and wear.
 - Consistent Results!



Adjustable Cure Rate Technology



“Specially formulated to deliver optimal product performance over a broad temperature range. Fast Return to Service, Consistent Results & Longevity”!

Polyurea 350 Basecoat:

- Summer Blend: 70-100F
- Winter Blend: 50-70F
- Artic Blend: 0-50F

RG – 80x Polyaspartic

- Super Slow: 90F+
- Slow: 50-90F
- Fast: 0-50F



Core High Performance Base Coats



“Best in Class foundation for Residential, Commercial and Industrial Flooring”.

- Polyurea 350
- Ultra Hydro Stop



Citadel Poly350 Base Coat



- 98% Solids Aromatic Polyurea
- Self Priming - Direct to Concrete
- **Superior Bond both mechanically & chemically***
- **Flexible / 198% Elongation & Impact Resistant**
- **Low Temp Cure / Variable Cure Rate Technology**
- Excellent for Broadcast Systems – **Up to 45 min broadcast window**
- Recoat 2-4 hours
- 1:2 mix ratio (A:B)
- Applied at 250 ft² per gallon
- Available in Tan, Gray, Clear & pigmentable with universal color packs



Core High Performance Base Coats



Ultra Hydro Stop:

- Available in Gray, Tan & Clear
- Applied at 80 to 100 ft² per gallon
- 3:2 mix ratio
- 100% solids
- Able to receive broadcasted w/o reducing ability to stop moisture
- Stops up to 25 lbs. of moisture



Core - High Performance Base Coats



PLE-100: 100% Solids Epoxy

- Available in Clear and Armor Gray, Light Gray & Dunes Tan
- Applied at 80 to 100 ft² per gallon
- 2:1 mix ratio
- 30-35 minutes Pot Life
- Direct to Concrete
- Low odor 100% solids
- Tenacious adhesion
- Chemical resistant
- FAST version available soon!*



Core High Performance Top Coats



“Best in Class finishes for high performing decorative flooring in Residential, Commercial and Industrial Markets”.

- RG -70
- RG-80x
- UL-80
- ET-80
- Poly-1 HD
- Poly-3 WB
- Poly-4 XT



Citadel RG-80x Polyaspartic Top Coat



- Workhorse 80% Solids Aliphatic Polyaspartic
- UV Stable
- Chemical Resistant
- Low Temp Cure / Variable Cure Rate Technology
- 1A : 1B Mix Ratio
- 1 Coat Coverage Top Coat for Full Chip System
- 24 Hour Cure for Vehicle Traffic
 - Super Slow requires 48 hour cure for vehicle traffic



Citadel UL-80 Polyaspartic Top Coat



- Ultra Low Odor
- 80% Solids Aliphatic Polyaspartic
- UV Stable
- Chemical Resistant
- 1A : 1B Mix Ratio
- 1 Coat Coverage Top Coat for Full Chip System
- 24 Hour Cure for Vehicle Traffic



Epoxy Resinous Flooring Systems



Metallic Flooring



Are fluid-applied, self-leveling, pored in place systems to properly prepared substrates. They create a seamless, protective unique flooring that offers a metallic, marbleized, high-end floor coating that offers high abrasion & chemical resistance and is easy to clean and maintain.

Primer/Basecoat

- PLE-100 100% Solids Pigmented Epoxy
 - EP-55 Primer
 - Ultra Hydro Stop

Metallic Coat

- SLE-100 100% Solids Premium Epoxy
 - PLE-100 100% Solids Epoxy

Protective Top Coat

- Poly4 XT
- Polyurea1 HD
- Poly3 WB Gloss or Matte



Epoxy Smooth/Neat Flooring System

Used as a protective coating in warehouses, manufacturing plants, ...



- *Primer/Base coat of Ultra Hydro Stop epoxy at 100 ft² per gallon
- Pigmented PLE-100 or SLE-100 epoxy at 150 ft² per gallon
- Pigmented PLE-100 or SLE-100 epoxy at 150 ft² per gallon
- (application of one or two coats, along with thickness are dependent on clients needs and budget.)
- Pigmented Polyurea1 HD top with Ultra Durability Plus 220sieve Polycarbonate for additional abrasion resistance



SmoothEpoxy/Neat & Metallic Flooring



BENEFITS:

- Suitable for high foot traffic and light/moderate traffic
- Seamless, nonporous and easy to maintain
- Ease of maintenance
- Aesthetic improvements
- Hard and abrasion resistant
- Stain and chemical resistant
- Antimicrobial
- Gloss. Satin and matte finish available



Metallic Flooring

TYPICAL AREAS OF USE:

- **Residential projects**
- **Retail stores**
- **Automobile showrooms**
- **Restaurants & bars**
- **Hotels & casinos**
- **Art galleries & museums**

Smooth/Neat Flooring System

TYPICAL AREAS OF USE:

- **Warehouses**
- **Manufacturing areas**
- **Grow facilities**
- **Laboratories & clean rooms**
- **Automobile service areas & garages**
- **Exhibition halls**
- **Medical & educational facilities**
- **Aircraft hangars**



Epoxy Silica Broadcast Flooring:

Utility/Shop Flooring



- Base coat of PLE-100 epoxy @ 100 to 150 ft² per gallon
- Broadcast to rejection rate is ½ lb per ft²
- Once cured clean and remove excess
- Intermediate coat of pigmented PLE-100 @ 100 ft² pr gln
- Broadcast to rejection rate is ½ lb per sq ft.
- Allow to dry and cure before collecting excess
- Grout coat of pigmented PLE-100 or SLE-100 epoxies @ 100 ft² pr gln
- *Optional but highly recommended application of Poly1 HD for additional abrasion & chemical resistance



Silica Broadcast Flooring:

Utility/Shop Flooring

A seamless fluid-applied, silica reinforced resinous flooring system with increased abrasion and impact resistance. Ideal for residential and commercial projects where a functional projective coating where higher durability is needed.

BENEFITS:

- Increased slip resistance in wet areas
- High impact & abrasion resistance
- Suitable for high traffic from forklifts and vehicles
- Seamless, nonporous and easy to maintain
- Resistant to hot tire pickup
- For surfaces in need of repair and/or protection



Industrial Systems



- **Type I Products**

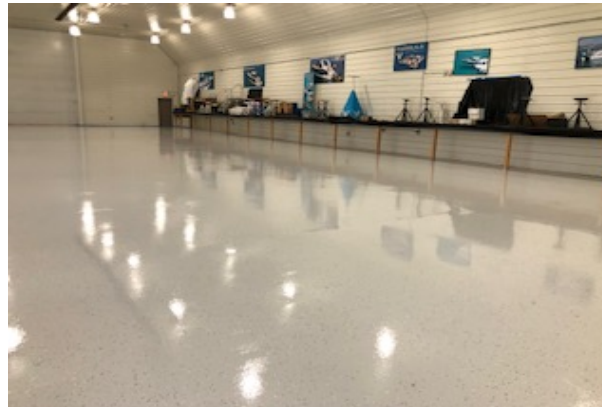
- 8000 OverKrete S/OP/V
- 8100 OverKrete Xtra S/OP/V
- 8200 OverKote S/TX/V
- 8300 OverKote Plus S
- 9600 BriteCast

Companion Products

TurboPrime Sealer / Primer
TurboKrete Concrete Patch
BlokFil Concrete Epoxy
108Clean & Etching Solution

- **Type II Products**

- 8000 OverKrete HD
- 8100 OverKrete SL
- 8200 OverKote HD
- 8300 OverKote Plus HD
- 8600 OverKrete 45/65 HD/S
- 8900 ThermaKrete Urethane Concrete
- 9000 FlorClad HD
- 4700 UltraPlex



Poly-3 WB

GOOD

Polyurea 3 WB is a High Solids (67%) premium waterborne two-part high performance urethane coating which utilizes aliphatic urethane polymer technology. It provides excellent film hardness, chemical, abrasion and UV resistance. It is available in Clear, Dunes Tan, and Light Gray and in a high gloss or matte finish.

- High solids 2K Urethane
- Good Abrasion and Excellent Chemical Resistance
- Add Ultra Durability Plus to increase abrasion resistance
- Available in Clear, Dunes Tan or Light Gray
- Available in Gloss or Matte Finish



Polyurea-1 HD

BETTER

Polyurea-1 HD is a high solids, single component Aliphatic Urethane that provides a high gloss, smooth finish with excellent abrasion and chemical resistance. Has a high gloss finish or satin by adding Ultra Durability Plus additive. Comes in clear but can be pigmented using CFFS colorants.

- High solids 1k urethane.
- Long work time
- High chemical & abrasion resistance
- Gloss or satin finish
- Clear or pigmentable
- Open to vehicle traffic in 24 hours*
- Unused material is good for 6 months*



Poly-4 XT

BEST

- Is a ready to use, easy to install high performance gloss topcoat that provides industry leading durability and return to service performance. Ideal for decorative and functional flooring applications that require protection from UV rays, abrasion, scratches and many of today's harshest chemicals. Poly-4 XT is tough and durable, at least 2X's more scratch and mar resistance when compared to moisture cured urethanes and polyaspartics.

- 1K, Easy To Use
- High Performance Gloss Topcoat
- Highly Abrasion & Scratch Resistant*
- Highly Chemical Resistant



Questions?



Top Coat Demo

Citadel RG80x Polyaspartic



New All In One Packaging of One-Day Flooring Coming Soon!



Narrow Spiral Mixer

- Product Details
 - Narrow spiral mixer for use with new All-In-One packaging
 - In stock NOW!
- Features/Benefits
 - Allows for easy power mixing with new packaging components
 - Pre-mix A and B in the individual component containers
 - Same mixer can be used for combining both components in the provided outer packaging/mixing vessel
 - Fits most standard drills
 - Easy clean-up
- Accessories Catalogue
 - One SKU to be used across all brands
 - Stocked in Brooklyn Park
 - Pricing is consistent across all brands



Types of Concrete Joints

Control Joint :

- Used for controlling shrink cracks in the first 90 days of the concretes curing.
- Used to control where a concrete slab cracks by allowing the crack to occur in the weakest point.
- Control joints are usually spaced between 15'-20' apart for slabs thicker than 7".
- Some control joints may function as expansion joints if no expansion joints were installed in the concrete. Check to determine if there is movement in the control joints. If so then the joint must be allowed to continue to move by treating it as an expansion joint.

Types of Concrete Joints

Expansion & Isolation Joints:

- Allows the concrete slabs to have areas for movement required by the expansion and contraction caused by temperature changes.
- Should be every 40'.
- Used to isolate a section or area of concrete such as around a column or pole.
- It stops a crack from continuing from one section of concrete to another.
- Common uses:
 - Concrete columns – parking garages, commercial buildings, etc.
 - Residential garages – Cold joints around perimeter of concrete slab.
- Can be filled with a sealant with a minimum of 100% tensile elongation and backer rod – 400-500% is better.

PolyFlex 93

Polyflex-93 is a two component, 100% solids, VOC Compliant, self-leveling flexible control joint filler. It cures rapidly and consistently at temperatures ranging from 0° to 120°F. With a tack-free time of less than 25 minutes, and allows vehicle or foot traffic in one hour. Polyflex-93 can be easily coated over with a wide variety of Citadel products.

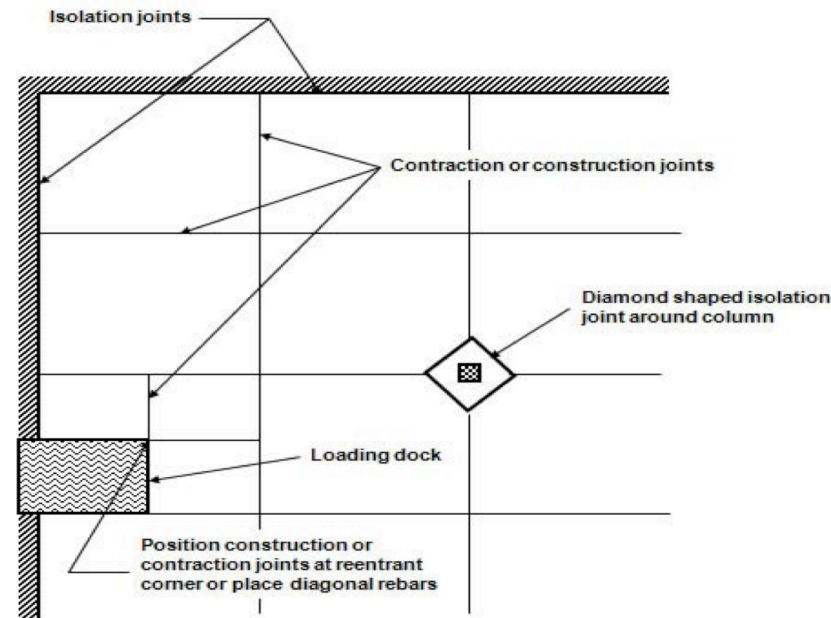
- Two component, 100% solids
- Self-leveling flexible
- For control joint filler & cracks*
- Installation temp 0° to 120° F
- Tack free in less than 25 minutes
- Countable to create a seamless floor



Types of Concrete Joints

Construction Joint:

- Is the cold joint from pour to pour.
- Can be filled and treated as a crack with FORTIFICATION, PolyFlex 93, Ultra Hydro Stop or 100% solids epoxy.



Flooring – System Comparison



Our formulated basecoat delivers better adhesion, longer durability:

- Superior substrate wetting and penetration
- Adhesion promoters that chemically bond to concrete
- Best in class impact resistance, flexibility & elongation

High Performance 1-Day Resinous Flooring Coating Systems			
Basecoat Comparison			
Performance Properties		Rust-Oleum's Polyurea Basecoat	Competitor's Polyaspartic Basecoat
Formulation	Solids	98%	Varies; 70% - 100%
Installation Application			
	Substrate Wetting	Superior	Fair
	Substrate Penetration	Superior	Fair
Installation Working Time			
	Coating application	20-25 Minutes	20-25 Minutes
	Chip application	45 Minutes	20-25 Minutes
Adhesion Performance			
	Adhesion to Marginal Substrates	Superior	Fair
	Mechanical Adhesion	Superior	Excellent
	Chemically Bonds to Concrete	Yes	No
	Tensile Strength	Superior	Fair
	Adhesion to Concrete	Superior	Fair
	Impact Resistance		
	Direct/Reverse	Superior	Fair



Flooring – System Comparison



High Performance Flooring - System Comparison		
System	Epoxy Flooring System	1-Stop, 1-Day Flooring System
Installation Time	2 - Day	1 -Day
Application Temp	50 °F - 90 °F	30 °F - 90+ °F
Color/UV Stability	Very Good - Interior Use Only	Excellent - Interior & Exterior Use
Return To Service		
Recoat	12-48 hours	2-12 hours
Foot Traffic	12-16 hours	2-4 hours
Vehicle Traffic	36-48 hours	1 - Day
Longevity - Service Life	Better	Best
Wear - Abrasion Resistance	Very Good	Excellent
Chemical Resistance	Very Good - Excellent	Excellent



Best Practices - Project Condition Report



PROJECT CONDITION SURVEY (Fill out as completely as possible)

DISTRIBUTOR INFORMATION

Distributor: _____ Date: _____
Location: _____ RO Acct Mgr: _____
Contact: _____ Telephone: _____

PROJECT INFORMATION

Project: _____ Location: _____
Contact: _____ Telephone: _____
Total Sq. Ft. _____ Cove Lin. Ft. _____ Striping Lin. Ft. _____
Description of Project _____
Have there been previous problems with the concrete or any coatings applied to the concrete?
☐ Yes ☐ No If yes, explain _____
Special colors needed? ☐ Yes ☐ No If yes, explain _____

CONCRETE SUBSTRATE

Condition: ☐ Good ☐ Exposed Aggregate ☐ Uneven and Spalled ☐ Chemical Corroded
Cracks: ☐ Yes ☐ No Vapor Barrier: ☐ Yes ☐ No ☐ Unk
Area Pitched: ☐ Yes ☐ No Drains: ☐ Yes ☐ No
Floor subjected to: ☐ Chemical ☐ Wet ☐ Scored ☐ Impacted ☐ Heavy Traffic ☐ Dragged Objects
Thickness _____ Age _____ yrs. Above 1st floor? ☐ Yes ☐ No

OPERATING ENVIRONMENT

Operating temperature of floor: _____ °F Installation Temperature _____ °F Installation Relative Humidity _____ °F

CHEMICAL EXPOSURE:

☐ Yes ☐ No (If no, skip to DAILY OPERATIONS)

Chemical	%Conc. & Temp.	Immersion	Splash/Spill	Occasional/Accidental
_____/_____		<input type="checkbox"/>	<input type="checkbox"/>	<input type="checkbox"/>
_____/_____		<input type="checkbox"/>	<input type="checkbox"/>	<input type="checkbox"/>
_____/_____		<input type="checkbox"/>	<input type="checkbox"/>	<input type="checkbox"/>

DAILY OPERATIONS:

Traffic Conditions: ☐ Foot ☐ Pallet Jacks ☐ Fork Lifts ☐ Vehicle ☐ Semi-trailer Truck
Type of Wheel: ☐ Rubber ☐ Plastic ☐ Steel ☐ Pneumatic

CLEANING PROCEDURES:

☐ Hot Water ☐ Steam ☐ Caustics-pH ☐ Acids-pH ☐ CIP Temperature _____
Frequency: ☐ Daily ☐ Weekly ☐ Monthly ☐ Other _____

SPECIAL CONSIDERATIONS:

Installation by: ☐ Rust-Oleum Applicator ☐ Customer in-house crew
Project Schedule: ☐ Weekday ☐ Weekend ☐ Nights ☐ Holiday Shutdown
Technical Support Requested ☐ Yes ☐ No
Other turn-around requirements? ☐ Yes ☐ No If yes, explain _____

PROJECT RESPONSE TIME

☐ Hot ☐ Pending ☐ Planning

PRICING (Requirements of End-User)

☐ Material Price per Foot ☐ Materials only

Report Completed by:

Name: _____ Company Name: _____

Address: _____

City: _____ State: _____ Zip: _____ Phone: _____

FAX TO: Rust-Oleum Direct Support Sales Group (847) 816-2272

EMAIL TO: protectit@rustoleum.com



Best Practices – Product Selection



Collectively, these factors establish the required product assortment for installation.

- End-use requirements; installation, return to service, appearance and long-term performance
- Project Condition Survey results
- Good, Better and Best Considerations
- Installer experience
- Crew size



Citadel Floor Finishing Systems – Product Benefits

- Easy, Consistent and Repeatable Installations
- Quick Return to Service
- Decorative Finishes bundled with Durable, Long Lasting Performance



Questions?

Thank you for Your Business!