

V4708 APARTMENTS AVAILABLE

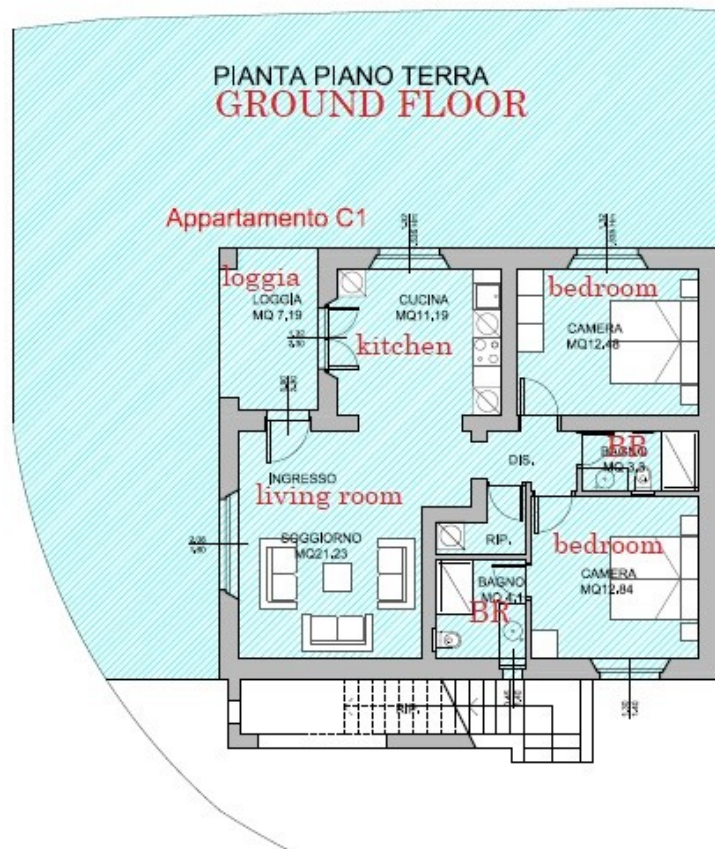
COMPLETED AND READY TO MOVE INTO -

C1 CAMPANELLA – **KITCHEN INCLUDED!**

Ground floor 83.50 sqm, 2 bedrooms, 2 bathrooms, garden 115 sqm

Living room-kitchen diner, 2 bedrooms, 2 bathrooms, hallway, loggia, storeroom.

Price: €289,000



OFF PLAN (NOT BUILT YET):

Building D:

Loggia (D1)

Ground floor 84.3 sqm, 3 bedrooms, garden 103.65 sqm

Living room-kitchen diner, 3 bedrooms, 2 bathrooms, loggia

Price: €360,000

SUPERFICI

APPARTAMENTO : MQ 84.3 (superficie utile lorda) **84 sqm**
LOGGIA : MQ 6.8 **6.8 sqm**
GIARDINO : MQ 103.66 (93.5+10.16) **103.65 sqm**

D1



GROUND FLOOR

Meridiana (D2)

First floor 84.3 sqm + loggias, 3 bedrooms, garden 42.20 sqm

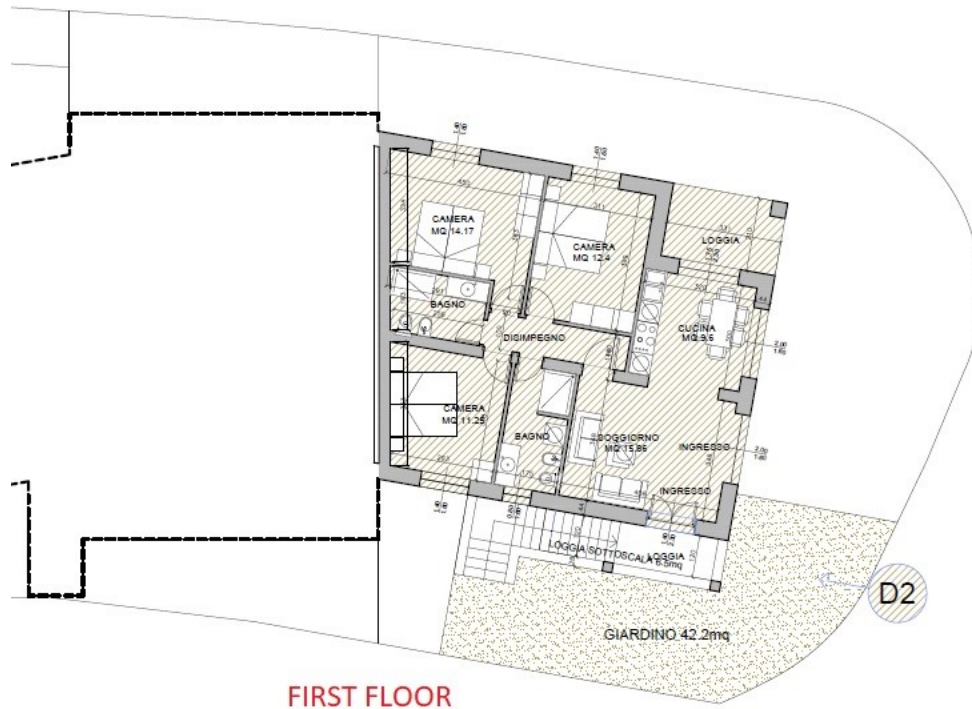
Living room-kitchen diner, 3 bedrooms, 2 bathrooms, loggias

Price: €360,000

SUPERFICI

APPARTAMENTO : MQ 84.3 (superficie utile lorda)	84.3 sqm
LOGGE : MQ 17.80 (6.80 + 4.5 + 6.50)	17.8 sqm
GIARDINO : MQ 42.2	42.2 sqm

D2



Cotto (D3)

Ground floor 73.05 sqm + loggia 13 sqm, 2 bedrooms, garden 35 sqm

Living room-kitchen diner, 2 bedrooms, 1.5 bathrooms, loggia

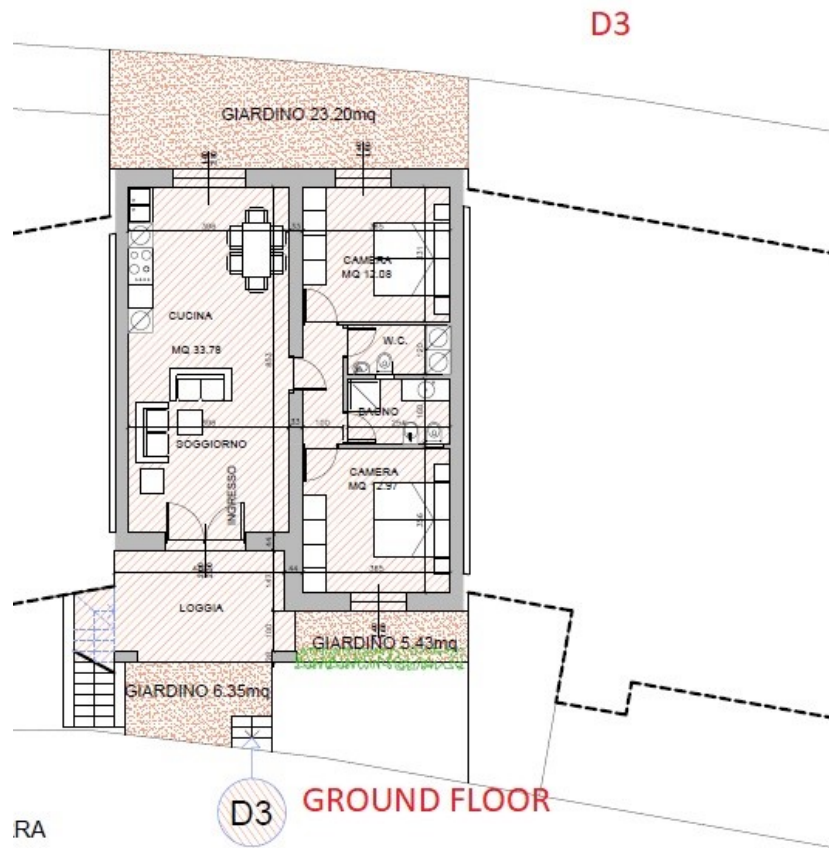
Price: €240,000

SUPERFICI

APPARTAMENTO : MQ 73.05 (superficie utile lorda)

LOGGIA : MQ 13.06

GIARDINO : MQ34.98 (23.20+6.35+5.43)



Fontana (D4)

First floor 73.05 sqm + loggia 11.5 sqm, 2 bedrooms, garden 12 sqm

Living room-kitchen diner, 2 bedrooms, 1.5 bathrooms, loggia

Price: €240,000

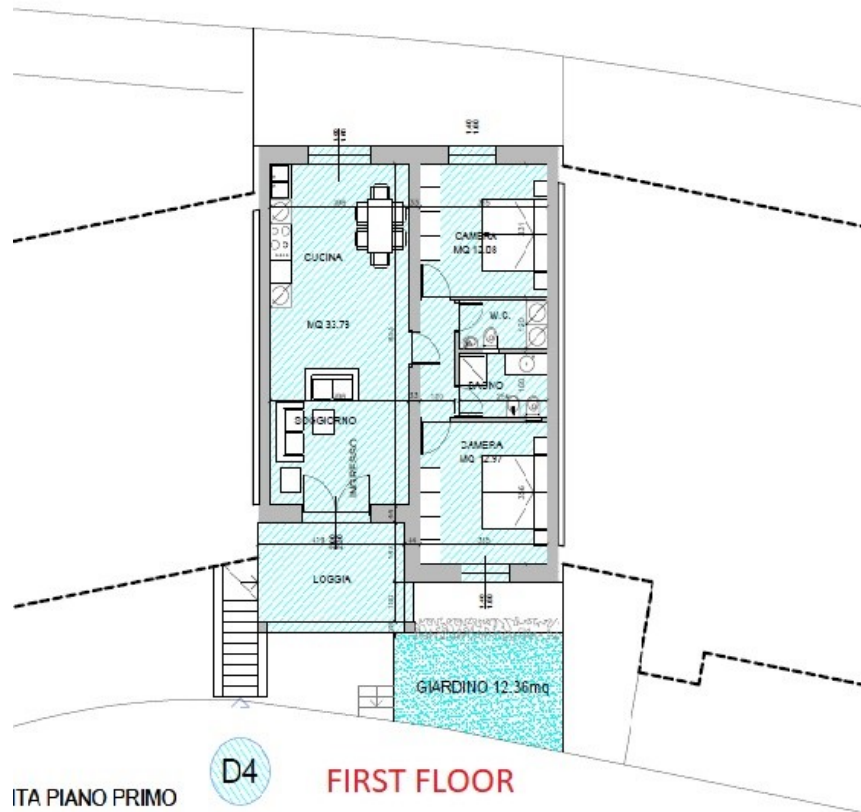
D4

SUPERFICI

APPARTAMENTO : MQ 73.05 (superficie utile lorda)

LOGGIA : MQ 11.72

GIARDINO : MQ 12.35



Archetto (D5)

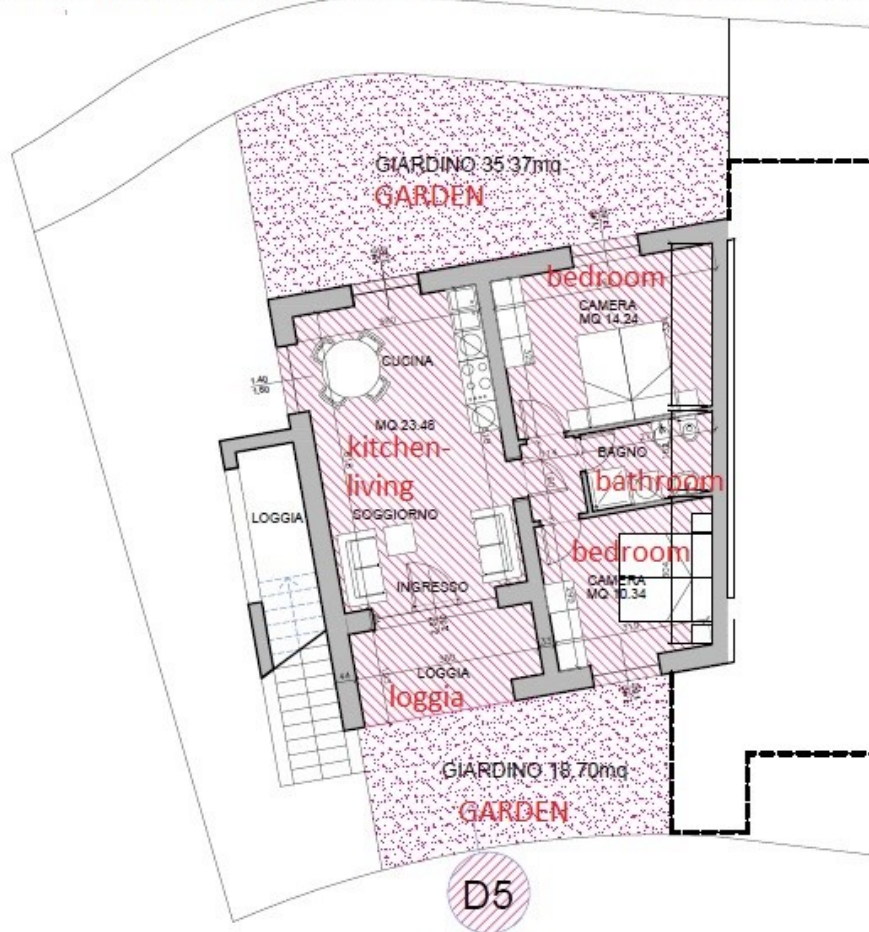
Ground floor 57 sqm + loggia 7 sqm, 2 bedrooms, garden 54 sqm

Living room-kitchen, 2 bedrooms, 1 bathroom, loggia

Price: €195,000

D5

APARTMENT 57.16 SQM, GARDEN 54.07 SQM, LOGGIA 7.04 SQM



PIANTA PIANO TERRA
GROUND FLOOR

Collonina (D6)

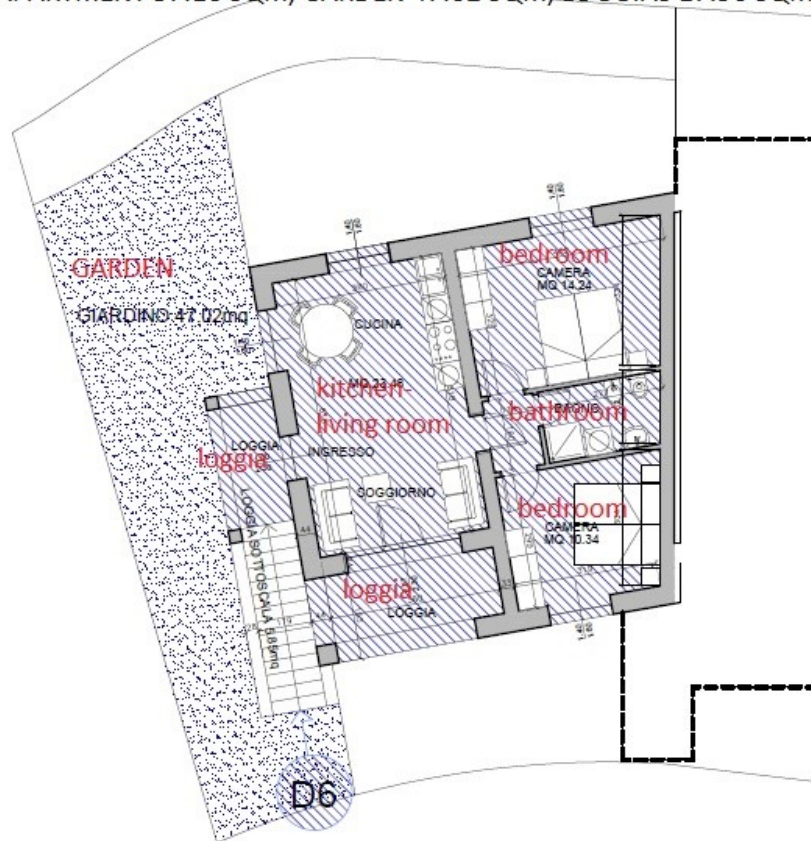
First floor 57 sqm + loggias 17.90 sqm, 2 bedrooms, garden 47 sqm

Living room-kitchen, 2 bedrooms, 1 bathroom, 3 loggias

Price: €195,000

D6

APARTMENT 57.16 SQM, GARDEN 47.02 SQM, LOGGIAS 17.90 SQM



PIANTA PIANO PRIMO

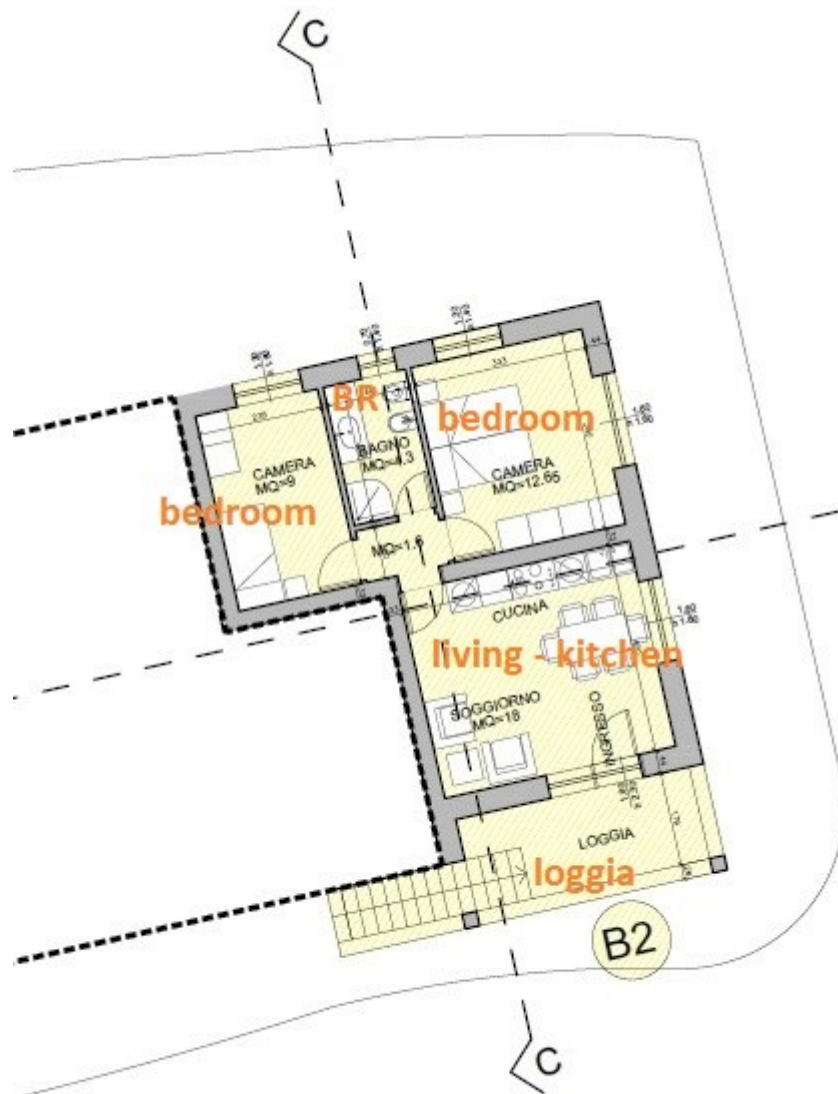
FIRST FLOOR

Balcone (B2)

First floor 48 sqm + loggia 9 sqm, optional garden available

Living room-kitchen, 2 bedrooms, 1 bathroom, loggia

Price: €169,000



PIANTA PIANO PRIMO **FIRST FLOOR**

Stemma (B3)

First floor 58 sqm, garden 10 sqm

Living room-kitchen, 2 bedrooms, 1 bathroom

Price: €169,000

