

## V4708 APARTMENTS AVAILABLE

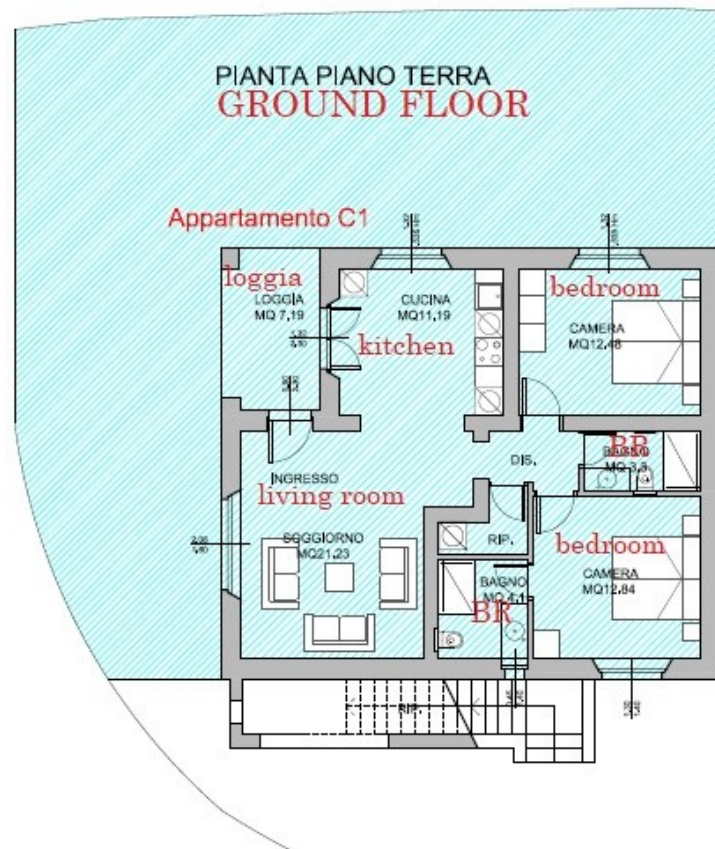
COMPLETED AND READY TO MOVE INTO -

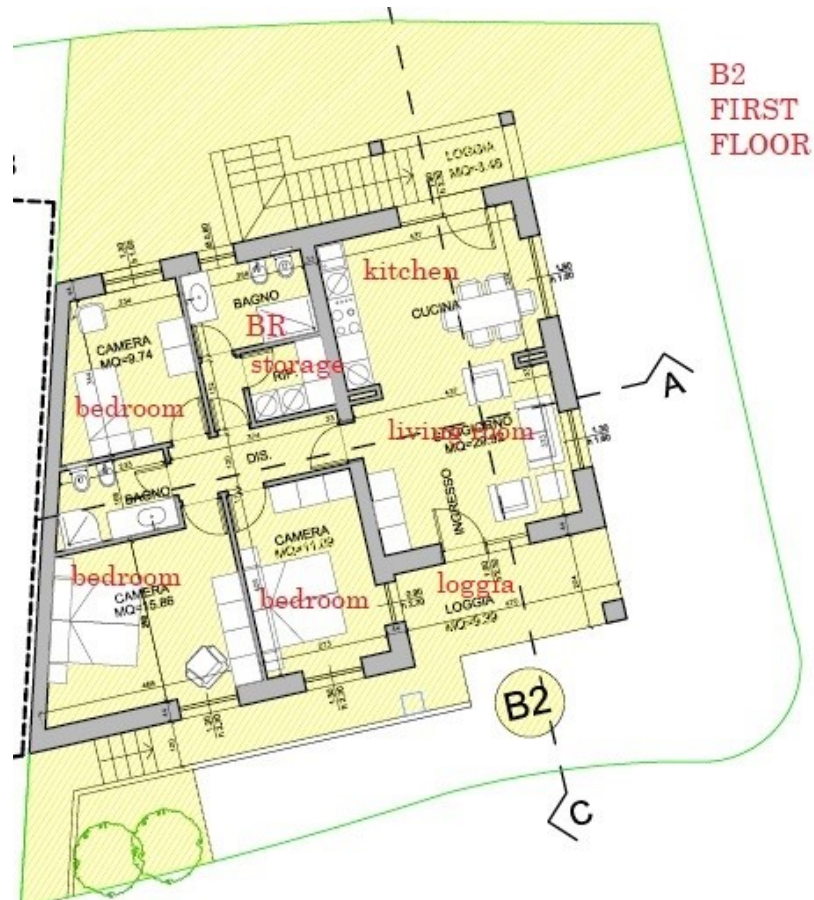
C1 CAMPANELLA – **KITCHEN INCLUDED!**

Ground floor 83.50 sqm, 2 bedrooms, 2 bathrooms, garden 115 sqm

Living room-kitchen diner, 2 bedrooms, 2 bathrooms, hallway, loggia, storeroom.

Price: €299,000

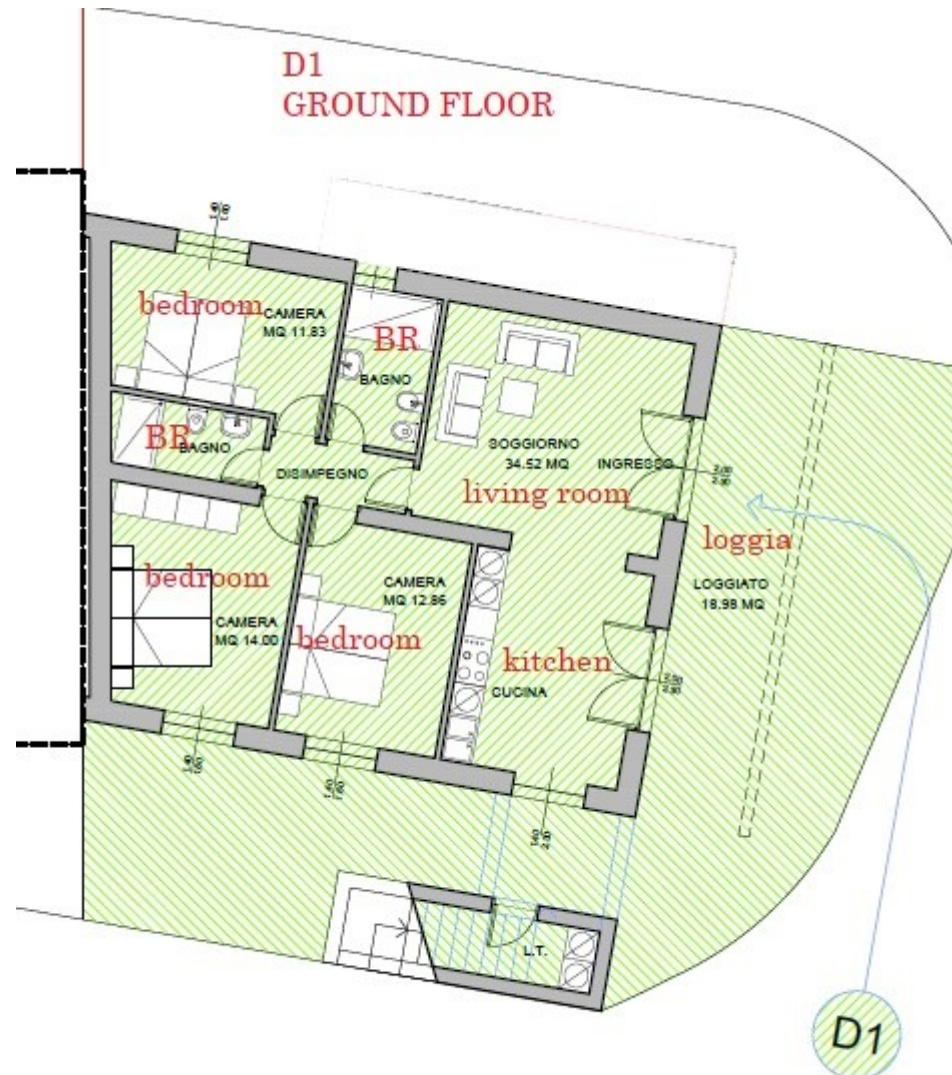




### Loggia (D1)

**Ground floor 109.50 sqm (90.5 sqm + loggias 19 sqm), 3 bedrooms, garden 63.20 sqm**

**Price: €360,000**





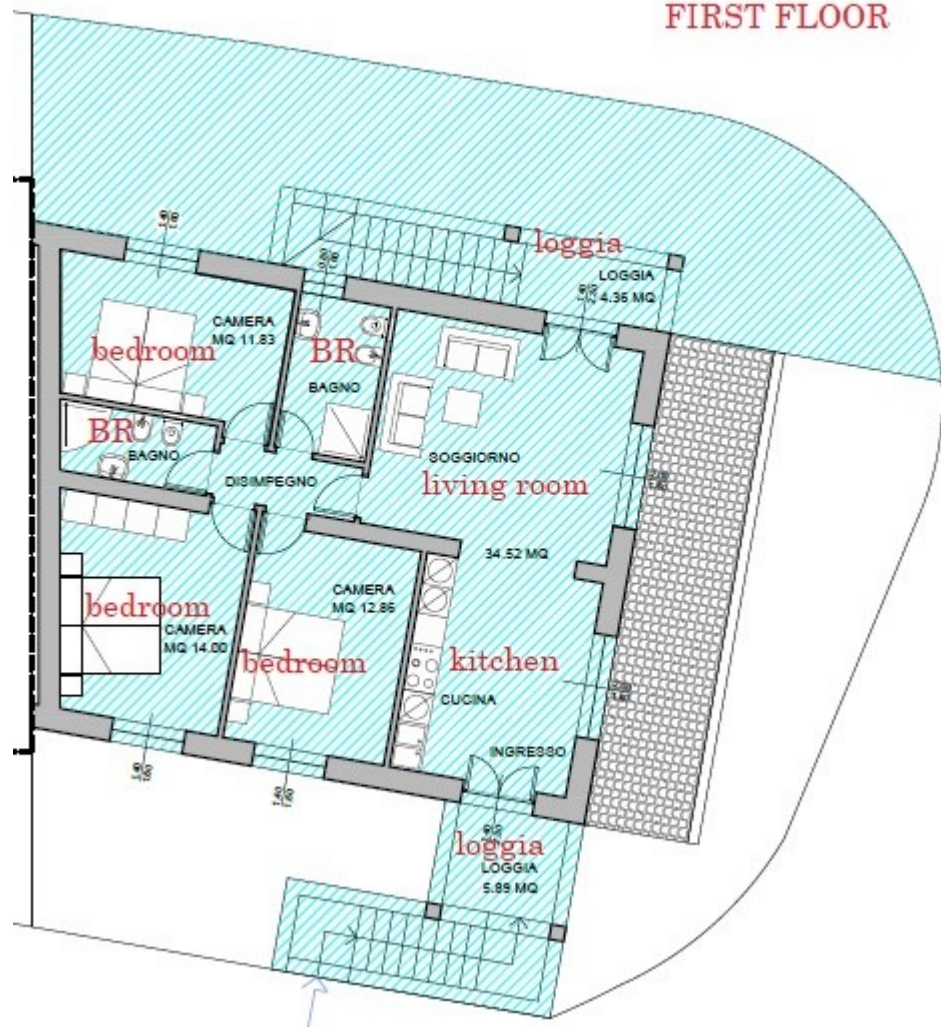
## Meridiana (D2)

First floor 100.75 sqm (90.5 sqm + loggias 10.25 sqm) 3 bedrooms, garden 56.5 sqm

Living room-kitchen diner, 3 bedrooms, 2 bathrooms, loggia

Price: €360,000

## D2 FIRST FLOOR



### Cotto (D3)

Ground floor 83 sqm (70.60) sqm + loggia 12.40 sqm, 2 bedrooms, garden 31 sqm

Living room-kitchen diner, 2 bedrooms, 1.5 bathrooms, loggia

Price: €290,000

