



SALAMANDER

E
K
R
A
N

UPVC Windows & Doors



**WE MAKE THE COMFORT OF YOUR HOME LAST:
TOASTY & WARM IN WINTER, PLEASANTLY COOL IN SUMMER**

BUILT TO LAST

*Grills Full Divided Light
Exterior Shutters*



Our Key Advantages:

• **Full Production Cycle at One Facility** allows tailoring the order to all your needs

• **Integrated Options and Accessories:** color, shape, hardware, material, glass, security level, and additional features – all customizable for your home or office

• **Lasting White:** secret SALAMANDER formula prevents your windows from color loss under any conditions

• **High Ecology Standards:** using only safe (sustainable to heat) plastic that can be fully recycled

• **Proven Expertise:** our team has received training directly from German experts; high quality standards are sustained and confirmed by European certificates:



WHY UPVC

- **Energy Efficiency:**

Better insulation allows energy bill reduction for properties of any size. Plus, no dust from outside reduces need for in-house cleaning

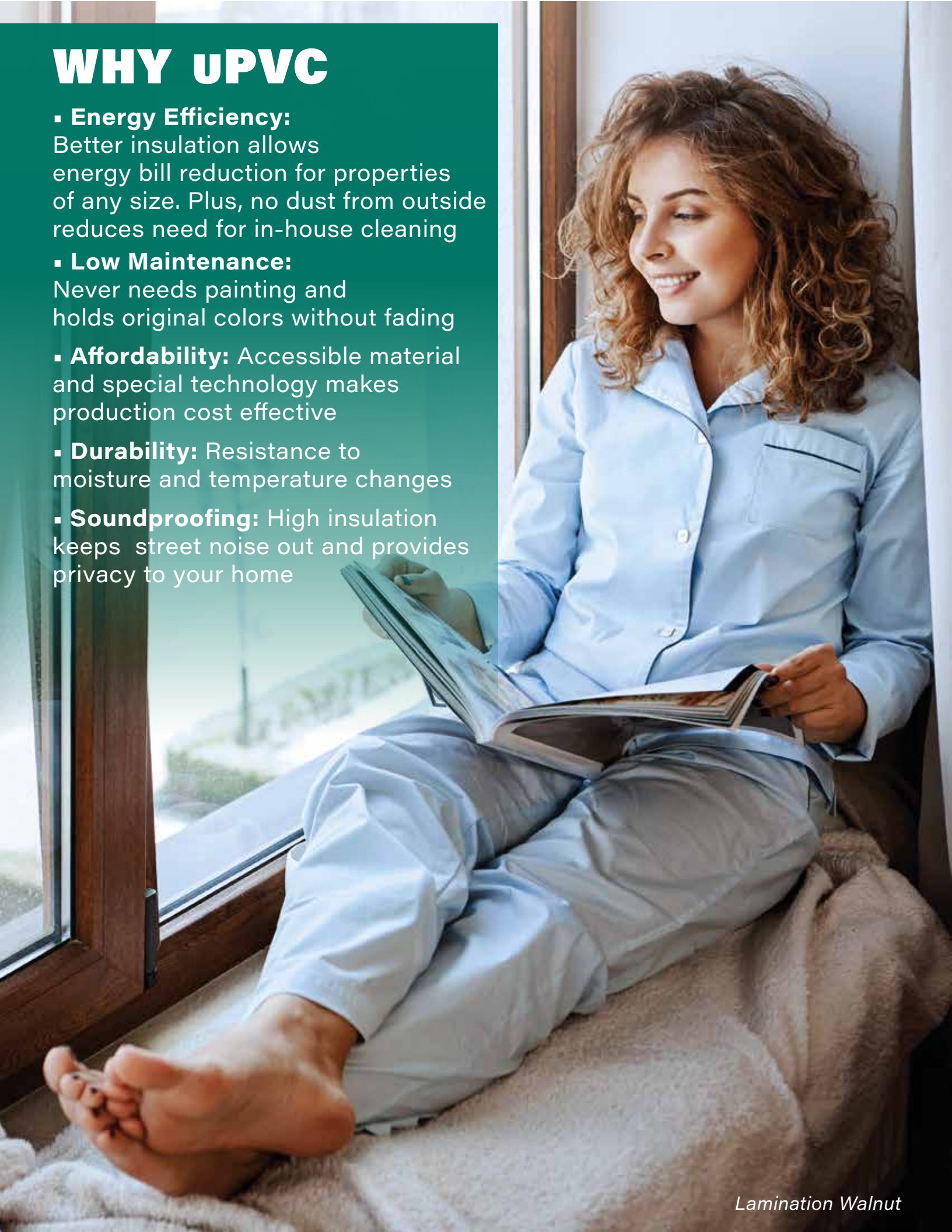
- **Low Maintenance:**

Never needs painting and holds original colors without fading

- **Affordability:** Accessible material and special technology makes production cost effective

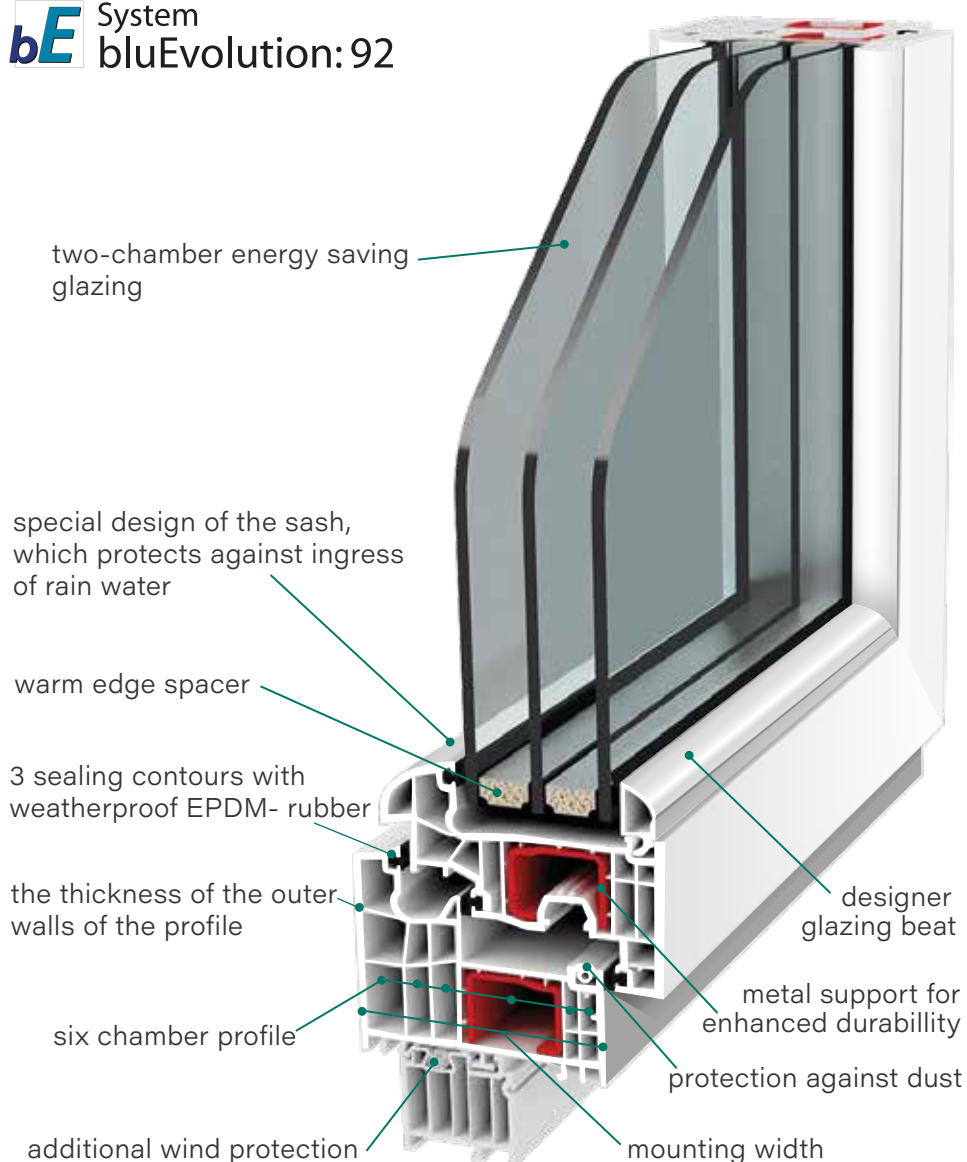
- **Durability:** Resistance to moisture and temperature changes

- **Soundproofing:** High insulation keeps street noise out and provides privacy to your home



ENERGY EFFICIENCY

bE System bluEvolution: 92



bE System bluEvolution: 73



6
maxima
system



	maxima	bluEvolution: 73	bluEvolution: 92
Frame mounting width	2.76 inch (70 mm)	2.84 inch (73 mm)	3.62 inch (92 mm)
# of chambers	5	5	6
Sealing with weatherproof EPDM-rubber	2 layers	2 layers	3 layers
Thickness of the frame outer walls	0.11 inch (2.8 mm)	0.12 inch (3.0 mm)	0.12 inch (3.0 mm)
Energy-saving glazing thickness	1.54 inch (39 mm)	1.73 inch (44 mm)	2.05 inch (52 mm)
U-factor*	0.25	0.22	0.16

*shows how much heat is lost through the unit in Btu/h.ft².°F. The lower value, the less heat is lost.

According to ENERGY STAR® requirement for the U.S., it needs to be less than 0.27.

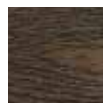
DESIGN INSPIRATION



Moran 19
Internal grills
Golden handle
Light Bronze glass



Sandy
Anthracite
Silver handle
Blue glass

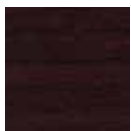


Nussbaum r9
Brown handle
Neutral glass

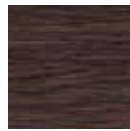


Brike Rose
Premium
Golden handle
Red Gold

Standard Exterior/Interior* Lamination** Options



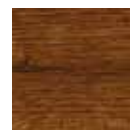
Black Cherry



Dark Oak



Walnut



Golden Oak



Grey Anthracite

Additional Exterior/Interior* Lamination** Options



Crème



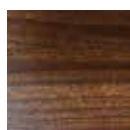
Brush Metal
Silver



Titan



Oregon 4



Macore



Autumn Red



Sea Blue



Forest Green

* you can combine any lamination for exterior and interior sides

**no staining or coloring for lasting performance

Grills

Grilles-between-the Glass



Add style to your window while making cleaning easy

Simulated divided Light



Grilles are permanently applied to the glass interior and/or exterior

Full Divided Light



Permanent exterior with internal spacer for authentic look

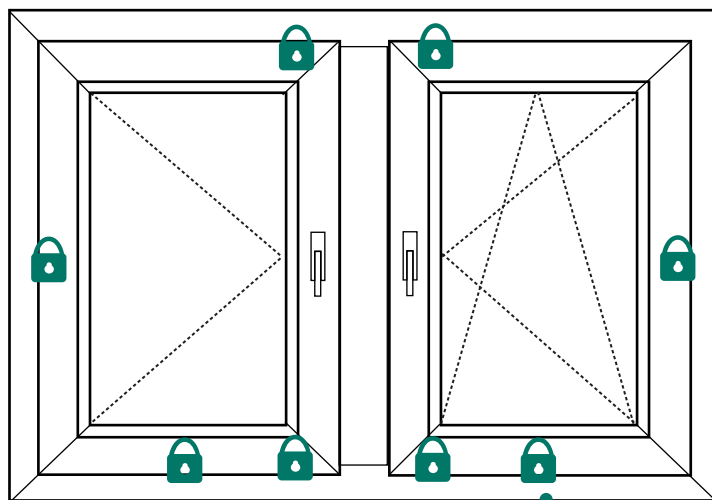
*Standard grilles width is
1.06 inch (27 mm)*

Color matches with frame lamination

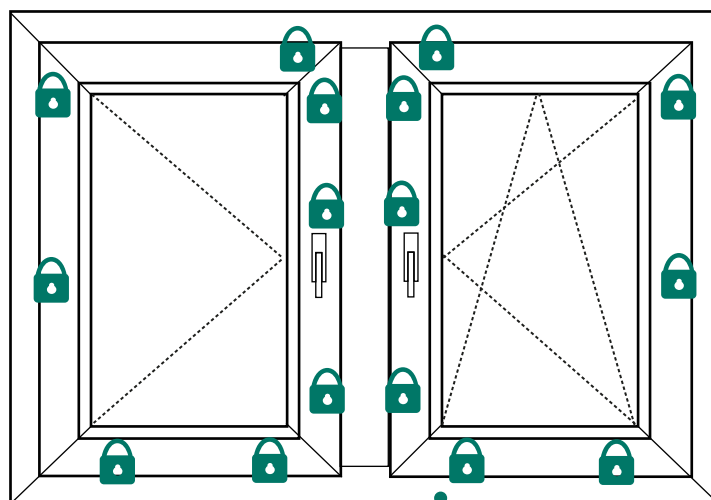


SECURITY SOLUTIONS

We offer two levels of security against intrusion attempts with our special Winkhaus hardware:



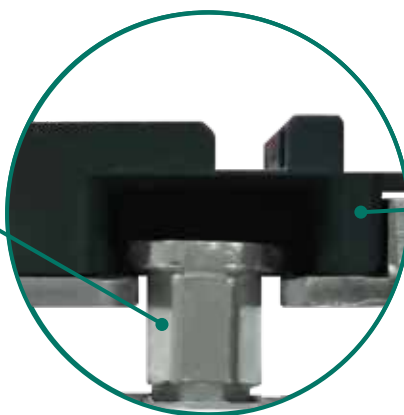
RC1



RC2



Anti-burglary mushroom latch with irregular shape nub



Stainless security latch

Secure Your Windows with Our Special Glass

☐ Tempered

- ▶ Four times stronger than regular glass
- ▶ Safe mean of escape: when crushed – breaks into small rounded chunks instead of sharp jagged shards

☐ Laminated

- ▶ Remains intact when broken due to invisible thin film, which prevents injuries and eliminate possible intrusion from outside
- ▶ Provides additional UV protection and soundproofing

☐ Triplex

- ▶ Maximum strength due to two layers of glass melted together with thin film
- ▶ Almost impossible to break, if broken: glass particles remains on film and intrusion is prevented



Childproof without Bulky Security Locks



Bottom Lock



Handle with Key



Lamination Golden Oak



Aluminum Tile Brown



FUNCTIONALITY

All our windows are equipped with top-quality German Winkhaus hardware:

- ✓ Enhanced security and durability
- ✓ Easy opening/closing
- ✓ Silent operation
- ✓ Adjustable, if necessary



Handles

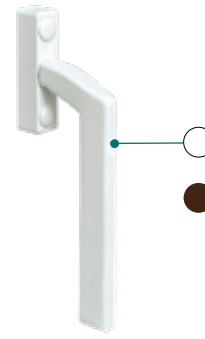
Standard



Standard with Key



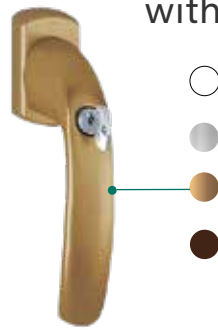
Griffolive 12 mm



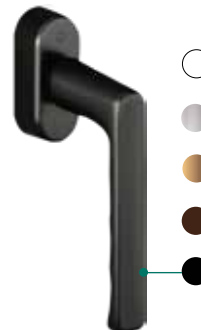
Hoppe Secustik



Hoppe Secustik with Key



Hoppe Secu Forte



- White
- Silver
- Golden
- Bronze
- Brown
- Anthracite
- Black

UPGRADE YOUR WINDOWS

In-built Vents

Interior view



Exterior view



Fresh Air without Security/Energy Loss:

an open window is an easy way to get fresh air, increasing your energy bill, and could create a risk of intrusion.

Not with our in-built vents, which:

- ✓ Increase oxygen in-house (for living room)
- ✓ Eliminate carbon dioxide (for bedroom)
- ✓ Eliminate smells and smog (for kitchen)
- ✓ Remove excess moisture (for bathroom)

while your window is safely closed.

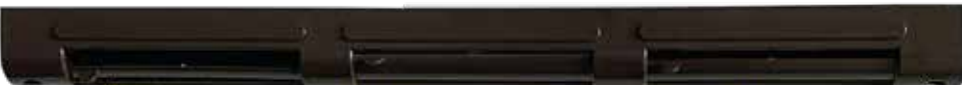
Perfect for Active Travelers:

come back to airy home without stuffiness.

Ventec



Anthracite



Brown



White

Insect Screen



Golden Oak



Golden Oak



White



Anthracite

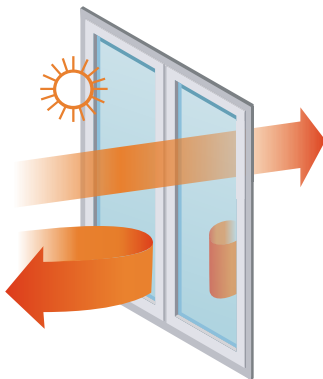


Golden Oak



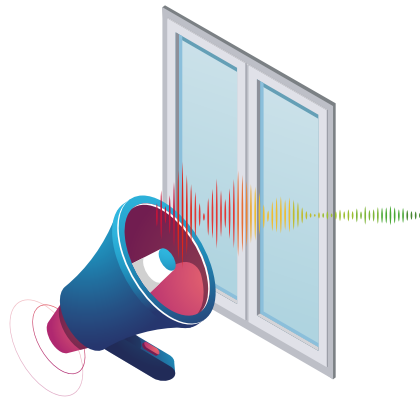
Dark Oak

Sun and UV protection



- ✓ Reflects heat in summer and retains heat during winter.
- ✓ Filter harmful UV rays and protect fabrics and furnishing from fading
- ✓ No transparency is lost

Soundproofing



Our frames are 28-32 dB soundproof, which prevents any low street noise.

With heavy traffic nearby or other loud sounds – increase soundproof to 38-40 dB with glass upgrades:

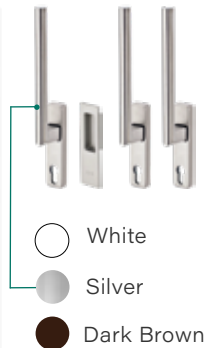
- ▶ combining glass of different thickness: such as 0.16 inch (4 mm) and 0.24 inch (6 mm)
- ▶ combining different space between glass
- ▶ add special triplex glass (two layers of glass melted together by special film)

GLIDING PATIO DOORS

- ✓ Energy efficiency, soundproof, and flexibility
- ✓ Enhanced security with special hardware and tempered glass

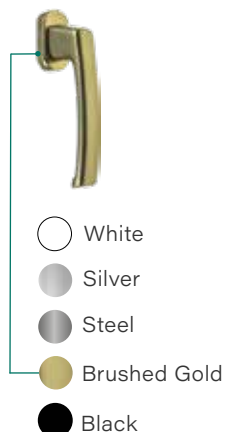
- ✓ Effortless operation and space saver
- ✓ Style and comfort with extra sunlight

HST Lift-Sliding Door



- Frame: SALAMANDER evolution Drive 5-chamber profile
- U-factor: 0.14 Btu/h ft² °F
- Soundproof: up to 48 dB
- Max width – 255.9 inch
- Max height – 106.3 inch
- Max sash width – 122.05 inch
- Hardware: MACO (Germany)
- Security level: RC2
- ▶ Lamination on image: Basalt Grey

HKS Tilt-Sliding Door

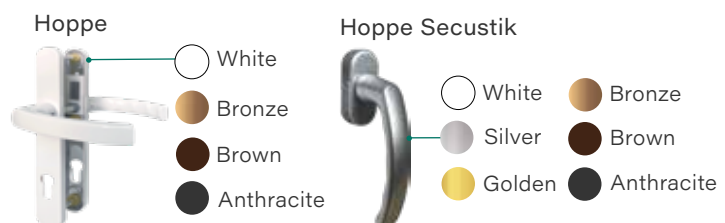


- Available in Maxima, bluEvolution 73, bluEvolution 92 systems*
- Max width – 106.3 inch
- Max height – 84.6 inch
- Max sash width: 53.15 inch
- Hardware: Winkhaus duoPort SK (Germany)
- Security level: RC1, can be upgraded to RC2
- ▶ Frame color: White

Folding Doors



- Available in bluEvolution 73 system*
- Max width – 236.2 inch
- Max height – 84.6 inch
- Max sash width – 2.8 inch, can have up to 8 sashes
- Hardware: GU (Germany)
- Security level: RC1, can be upgraded to RC2
- ▶ Lamination on image: Anthracite Grey



*check pg. 5 for details

MULTIPLE DOOR OPTIONS

Get all benefits from uPVC technology with our doors:

- ✓ Minimized energy loss for entrance doors
- ✓ Increased privacy for offices due to soundproofing
- ✓ Flexibility in design choice
- ✓ Smooth operation and easy cleaning



*Folding Doors
Frame color: White*



Exclusive Distributor in the U.S.:

Markoza, LLC

775 Bloomfield Ave Suite 1B,
Clifton, NJ 07012

Your Sales Agent:

+1 201 637 5153

We use SALAMANDER profile



Made in Germany