

SCHUMACHER LEASING PRESENTS

JS OFFICE PLAZA OFFICE COMPLEX

701 North 1st ST, Yakima, WA. 98901



BUILDING FEATURES

- ✦ Deluxe full Service Office Space
- ✦ Next To Downtown Business Core
- ✦ Convenient Free Parking
- ✦ Fixed Rates on Utilities included in NNN
- ✦ Main Street Exposure on Bus Route
- ✦ Some Tenant Improvements Available
- ✦ Long Term Lease Discounts Available

LOW LEASE RATES

Office Space Available

Low Rates & Landlord Pays Utilities
Individual Suites

Suite # 204 - 200sf \$285.00 mo.

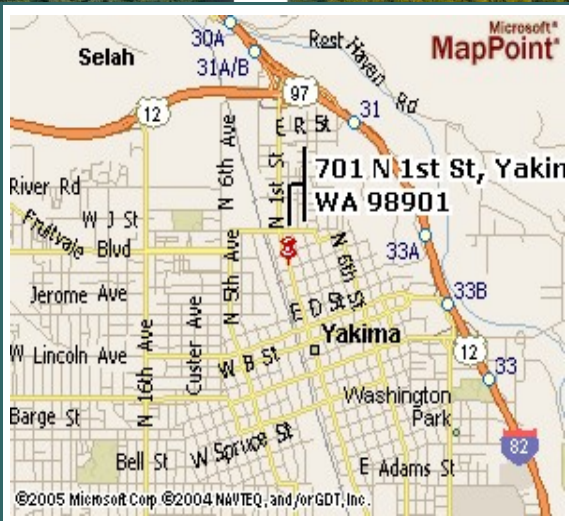
Suite # 200 - 380sf \$380.00 mo.

Suite # 100 - 720sf \$988.00 mo.

Suite's have use of Conference room



Office Suite Includes Utilities



For More Information Contact (206) 715-9000



SCHUMACHER LEASING

OFFICE SPACE – RETAIL – CONDO - SELF STORAGE

Owner Direct Properties Jim@LeasingRealestate.com

(206) 715-9000

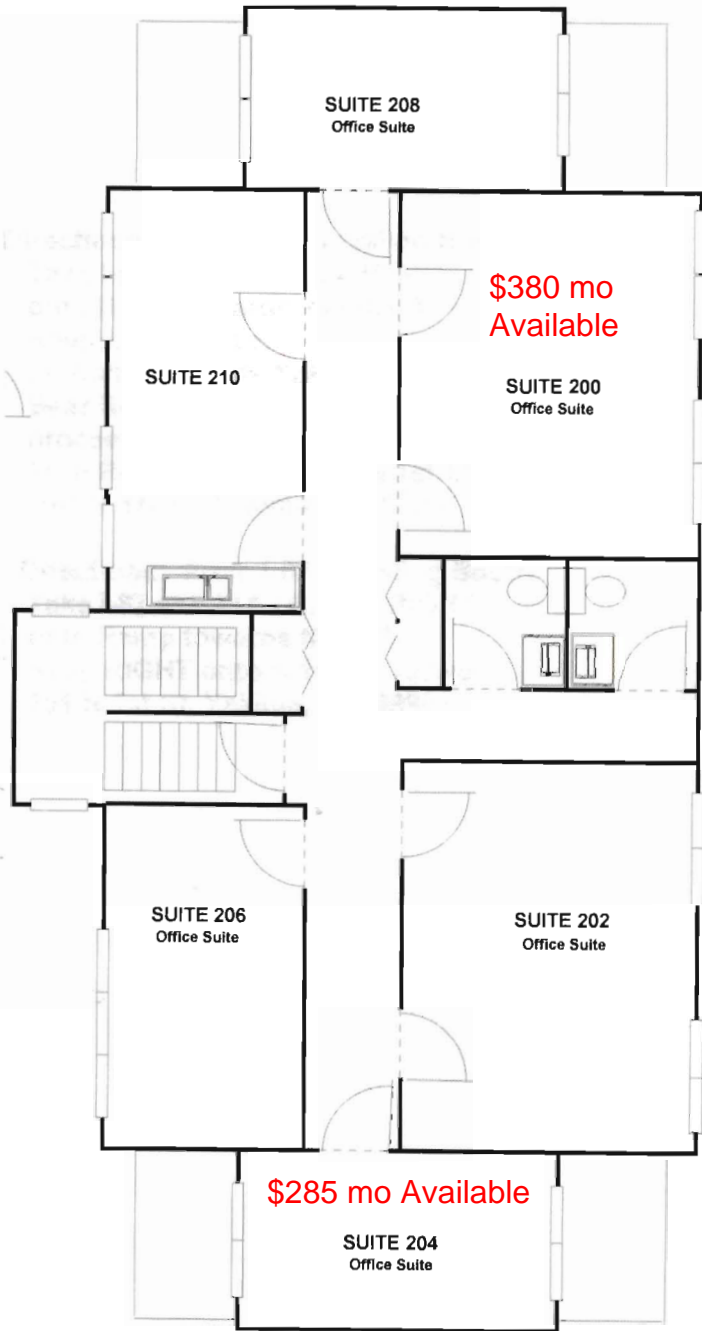
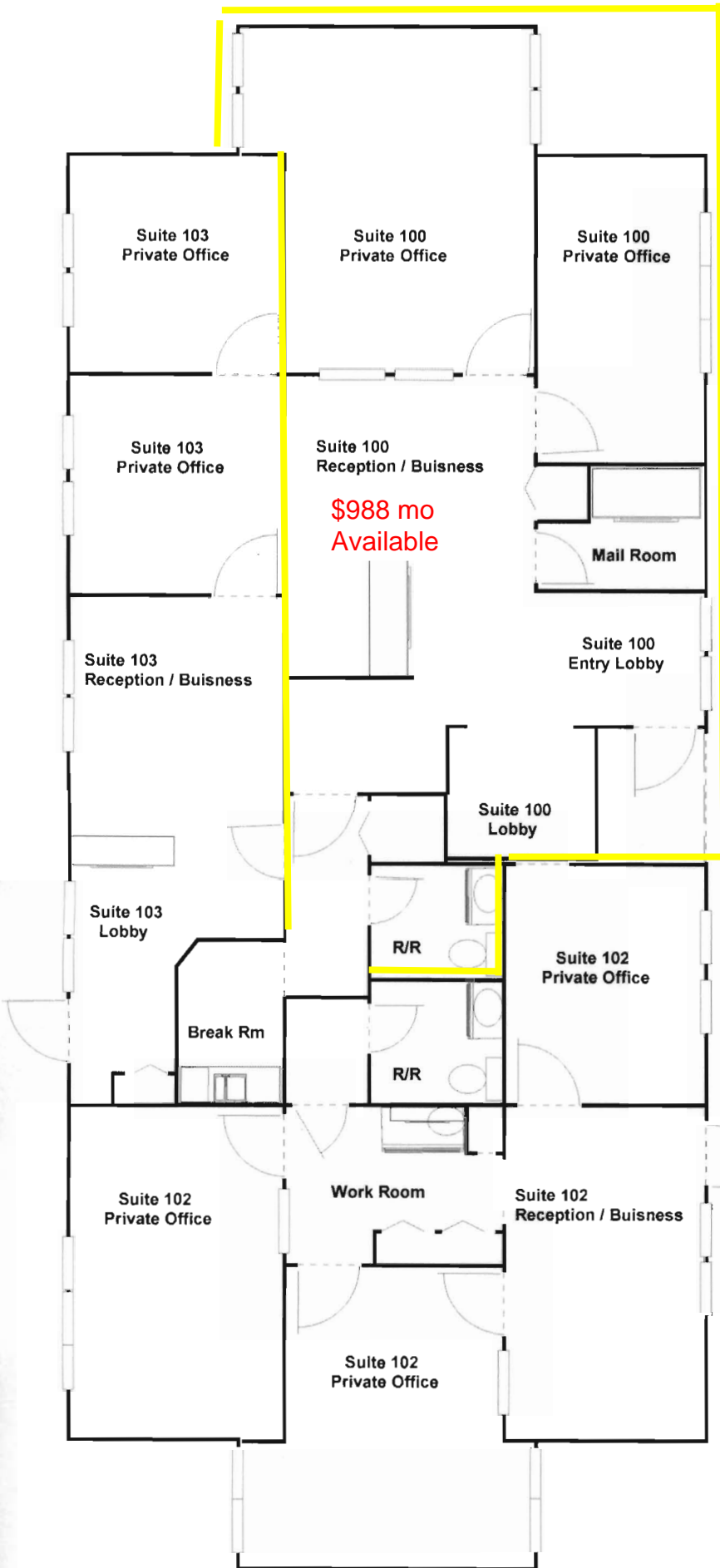
PO BOX 949. Mukilteo. WA. 98275

* The Information contained herein has been obtained from sources deemed reliable but is not guaranteed.

JS OFFICE PLAZA

701 N 1st ST.
Main Building Suite

Schumacher Leasing
509-969-0000
or 206-715-9000



JS OFFICE PLAZA SUITE 100
701 N 1st Street, Yakima WA. 98901



JS OFFICE PLAZA SUITE 100

