

Silver Lake Trail Phase 1

Trail Improvement Project Update August 2020

Introduction & Background

The Village of Perry continues to invest in the future while celebrating its past. The Silver Lake Trail Phase 1 will provide a transportation connection, linking the recent improvements at the Village of Perry Public Beach to the enhanced Main Street within the National Register Downtown Historic District. The designated connection and improved transportation elements will spur future investment, promote tourism, increase physical activity and improve public health, making the Village of Perry and the surrounding communities even better places.

Capitalizing on the natural and historic resources of the Silver Lake Outlet and the abandoned Silver Lake Railroad corridor, the trail will provide the active transportation facilities that are imperative to serve all community members and visitors. Proper accommodations for bicyclists and pedestrians, updated wayfinding signage, bike lanes, trailhead landscaping improvements and sidewalk repairs are just some of the elements included in this project.

The 2016 Silver Lake Trail Feasibility Study developed the initial concept for the trail. In November 2019, the Village of Perry selected C&S Companies to take the ideas from the study and bring them to reality with a final design. To implement the design, the Village of Perry received approximately \$1 million in federal funding administered by the New York State Department of Transportation (NYSDOT) through the Transportation Alternatives Program (TAP) grant program. With the addition of a 20% contribution by the Village, the overall project investment will be \$1.25 million.



Lake Road—Existing



Lake Road—Concept



Trail Bridge—Existing



Trail Bridge—Concept



Proposed Improvements

The Silver Lake Trail, Phase 1 Project will provide pedestrian and bicyclist connections between Perry Beach and the 'Downtown Hub', in the heart of the Village's Historic District.

Village of Perry Public Beach

The Village is currently constructing significant improvements to Perry Beach, including a structure, enhanced parking and other facilities. As part of the trail project, a new trailhead will be constructed to entice users to follow the trail to the Village.

Walker/Lake Road

The existing 20-foot roadway will be widened to provide 10-foot travel lanes and 5-foot shoulders to accommodate safe travel for both pedestrians and bicyclists traveling to and from Perry Beach to the existing Silver Lake trailhead.

Existing Off-Road Silver Lake Trail

The west trailhead will incorporate a gateway treatment to emphasize an arrival at the lake for trail users from the Village while also providing a welcoming entrance to the off-road trail for users traveling from Perry Beach. A parking lot will serve as an access to motorists and recreational fishermen. The bridge carrying the trail over the Silver Lake Outlet will receive a timber decking treatment to meet ADA standards and become more pedestrian and bicycle friendly. The east trailhead at S. Federal Street will share similar design elements and improvements as the west trailhead. Enhancements will acknowledge the rich historical significance of the region.

Connection to Downtown—S. Federal Street Pedestrian & Bicycle Route

Sidewalk improvements along S. Federal Street and ADA compliant curb ramps at trail crossings will carry pedestrians safely from the west trailhead to the 5-point intersection. Bicyclists will share the road with traffic aided by updated pavement markings and wayfinding signage.

Connection to Downtown—Lake Street Pedestrian Route

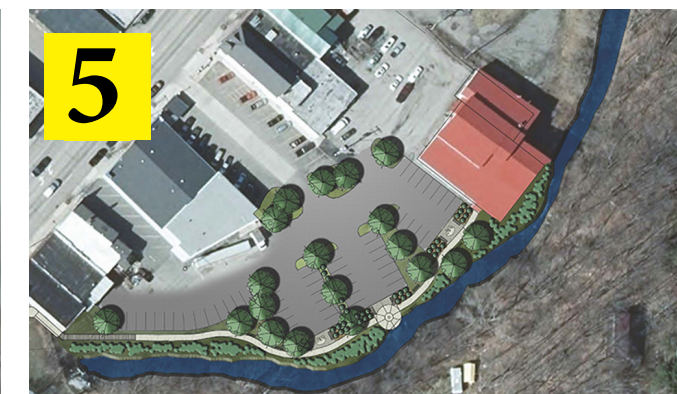
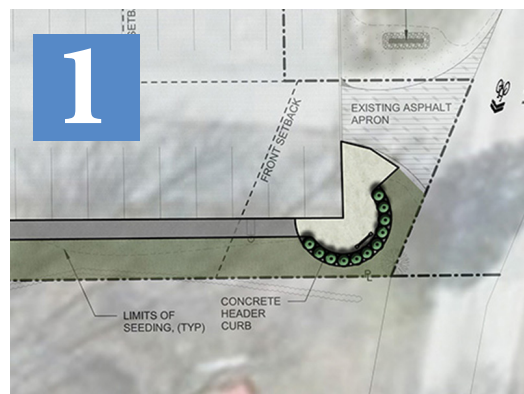
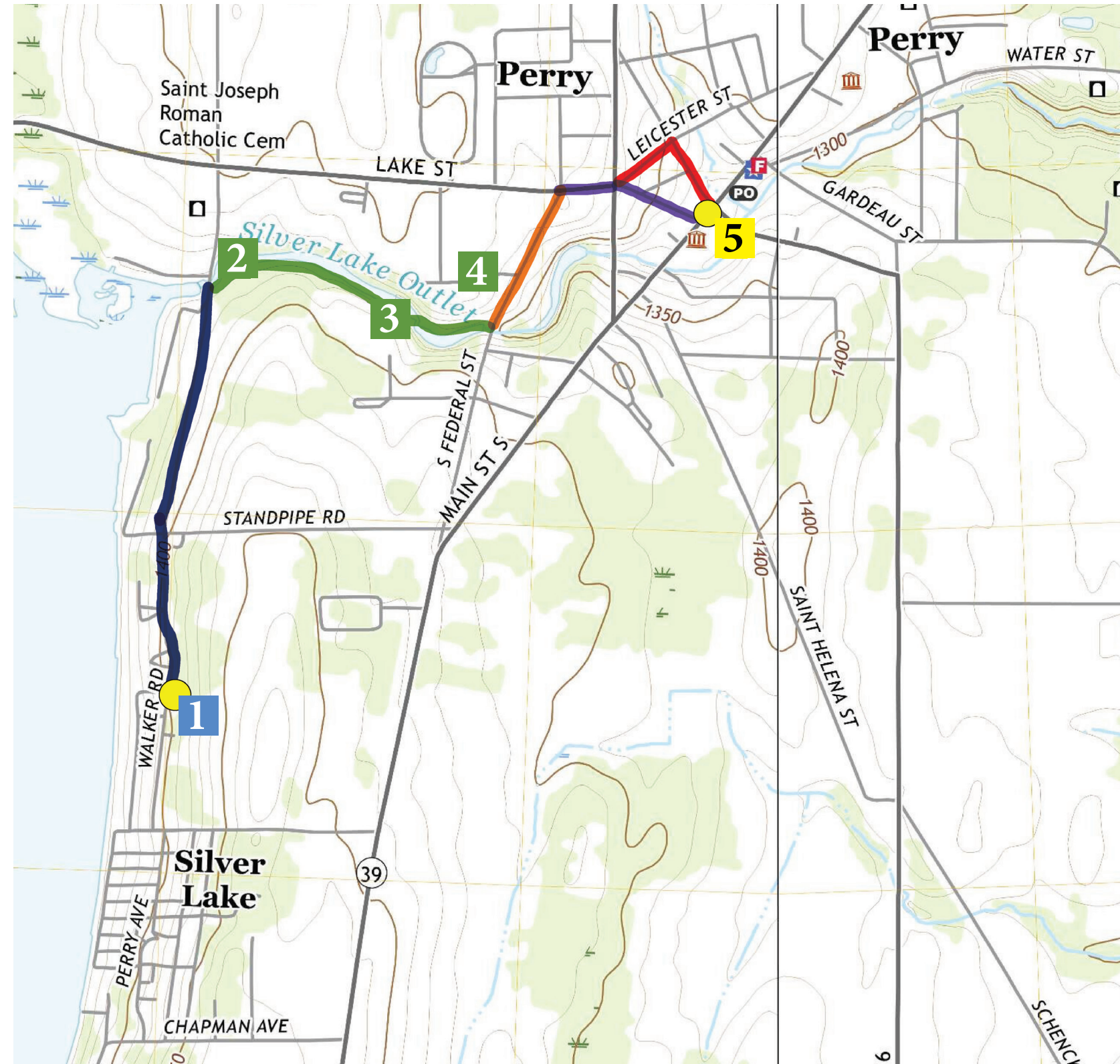
At Lake Street, the trail turns eastward to the 5-point intersection with Center Street and Leicester Street. New sidewalk will be added to the south side of Lake Street and potentially the north side, while dedicated bike lanes will be striped. The trail then diverges between the 5-point intersection and downtown with pedestrians continuing along Lake Street

Connection to Downtown—Leicester & Covington Bicycle Route

A combination of shared lanes and dedicated bike lanes will be used along Leicester Street and Covington Street for bicyclists. Existing parking patterns plan to be maintained throughout this section.

Downtown Hub

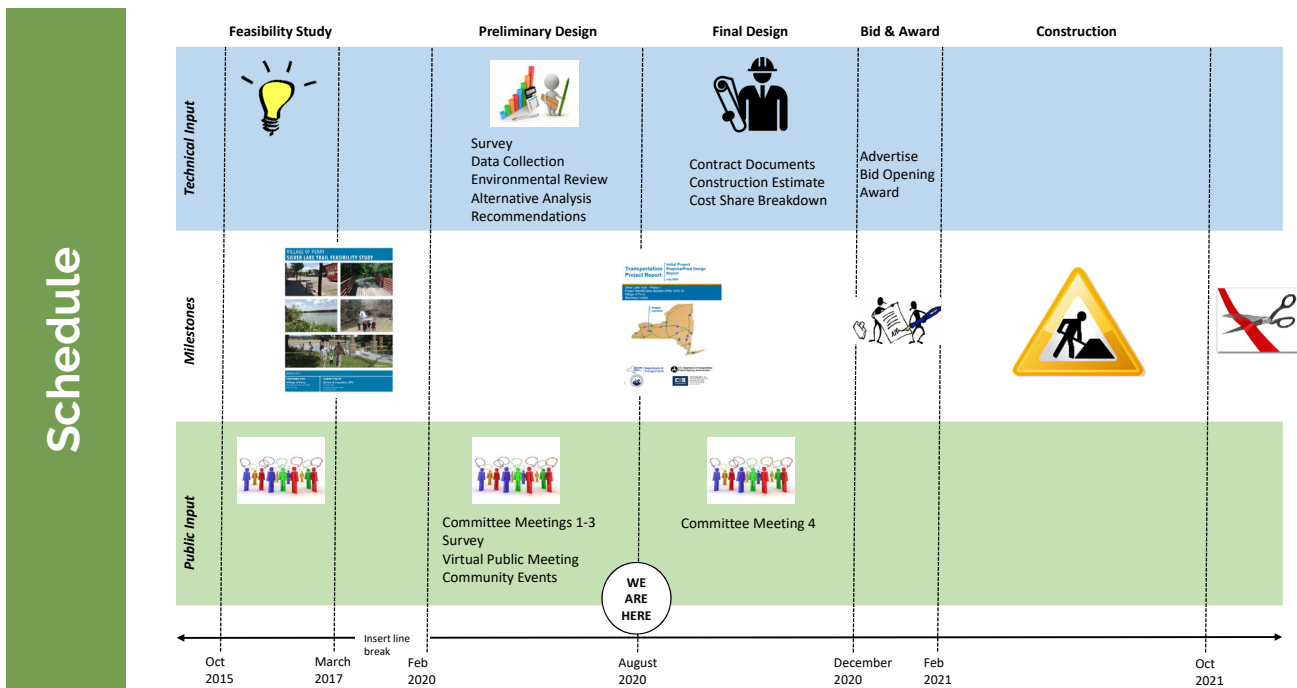
A downtown trail hub will be developed to rediscover the hidden gem of waterfront behind Main Street buildings. The ADA accessible route from Memorial Park provides a place for recreational leisure. A new landscaped seating area will incorporate a focal element to encourage visitors to engage with the creek. Enhanced parking will serve users of this portion of the trail and the future Phase 2 extension.



Design Process

The design process follows the standard procedures for Locally Administered Federal Aid (LAFAs) projects. The process is divided into two major components: preliminary design and final design. Preliminary design will include survey, collecting all available data, environmental screenings, public and stakeholder interaction, and development of a design report that summarizes the initial findings. The New York State Department of Transportation (NYSDOT) will be closely involved, especially in the environmental determination and review of the design report, and will need to authorize final design before progressing. Final design includes developing the final plans, specifications and estimate (PS&E), advertising, bidding and awarding the contract. NYSDOT will again be involved with plan review, and will need to sign off on the final PS&E and provide construction authorization before the project is advertised for bidding.

Early and regular interaction with stakeholders and the general public is important to inform which improvements will most benefit the local community and then transform those improvements into reality. There was significant public input during the study phase and that has continued into design. The design has been guided by a thirteen member Steering Committee that includes representatives from the Village, Wyoming County, towns of Perry and Castile, and community organizations. A variety of tools have been used to increase awareness about the project and solicit input from members of the public including a project website, a web-based survey in March, and a virtual public meeting in May. The project and its resources have been promoted through the Village website and social media, advertisements in the Perry Herald and Perry Shopper, and a project banner and information sheets located on the trail.



For more information:
www.cscos.com/silverlaketrail
Submit comments to:
 Silver Lake Trail email
SilverLakeTrail@cscos.com

