

TAXONOMÍA

(DASYLIRION)

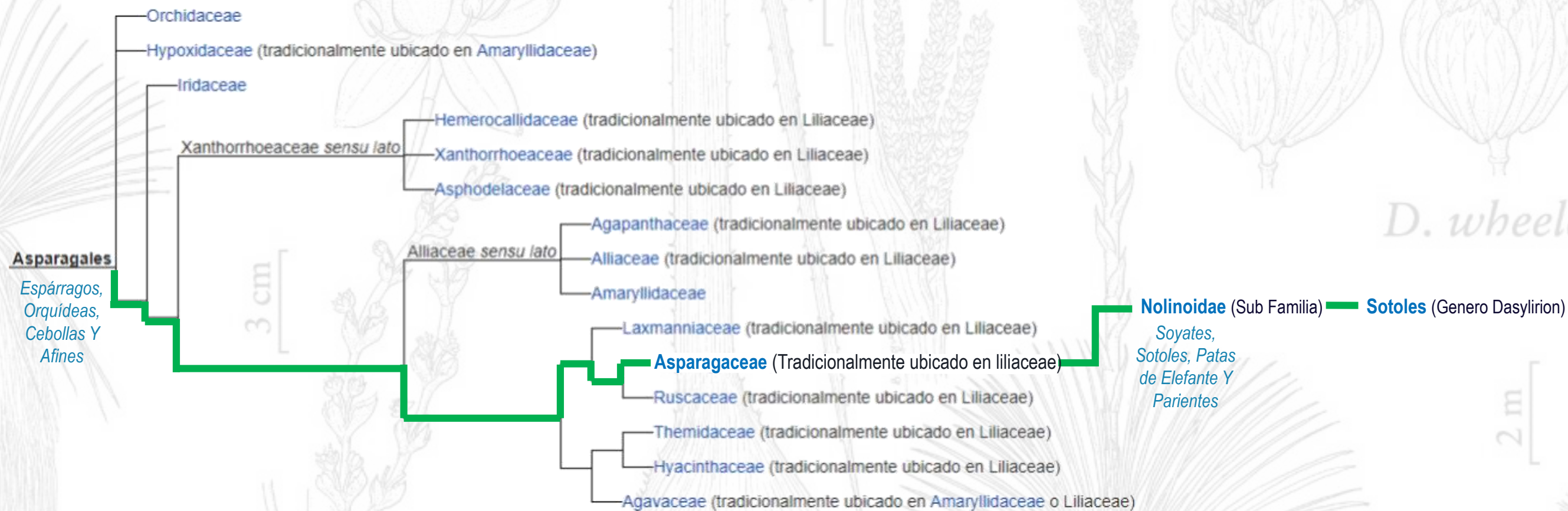
ORDEN

FAMILIA

SUB-FAMILIA

GÉNERO

ESPECIES



Sección Dasylyrion Trel.

1. *Dasylyrion acrotrichum* - Sotol Verde / Cucharilla
2. *Dasylyrion graminifolium* - Sotol de Zuccarini
3. *Dasylyrion parryanum* - Sotol
4. *Dasylyrion leiophyllum* - Sotol Brillante
5. *Dasylyrion lucidum* Rose - Sotol di Rose
6. *Dasylyrion serratifolium* - Tehuizote
7. *Dasylyrion texanum* - Sotol Texano
8. *Dasylyrion simplex* - Seréke
9. *Dasylyrion gentryi* - Sotol Sonorense

Sección Quadrangulatae Trel.

1. *Dasylyrion longissimum* – Padillo /Varachoete
2. *Dasylyrion miquihuanense* - Sotol Tamaulipeco
3. *Dasylyrion treleasei* (Bogler) – Sotol Trelease
4. *Dasylyrion quadrangulatum* - Varacohete

Sección Glaucophyllum Hochstätter.

1. *Dasylyrion berlandieri* – Sotol Berlandier
2. *Dasylyrion cedrosanum* - Sotol cenizo
3. *Dasylyrion glaucophyllum* - Sotol Hidalgo
4. *Dasylyrion occidentalis* - Sotol Occidental
5. *Dasylyrion longistylum* - Sotol SLP
6. *Dasylyrion palaciosii* - Sotolillo
7. *Dasylyrion sereke* - Sotol de la S. M. Occidental
8. *Dasylyrion Duranguensi* - Soyate
9. *Dasylyrion wheeleri* - Sotol de Desierto