

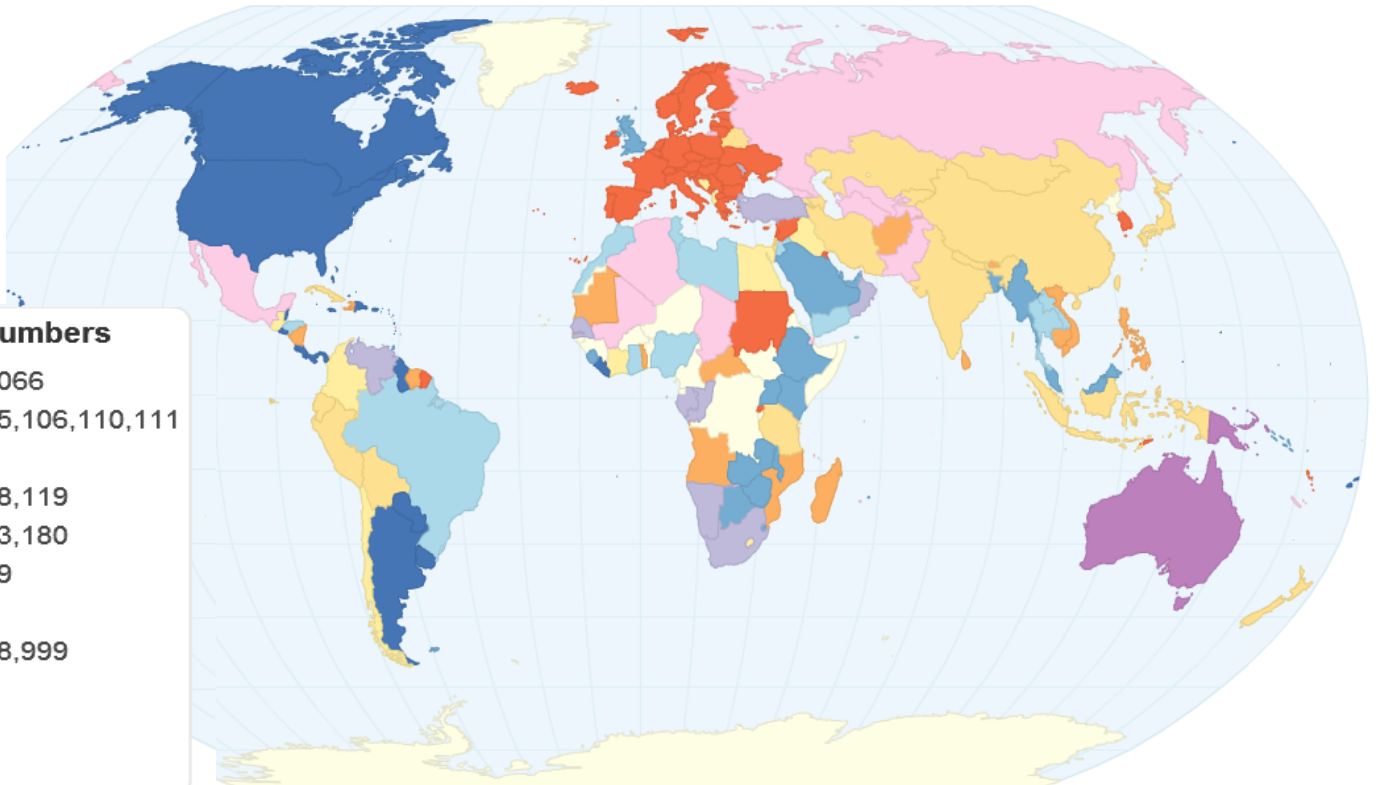
# S.A.F.E. Communications LLC

## Emergency Telephone Numbers Around the World



### Local Emergency Numbers

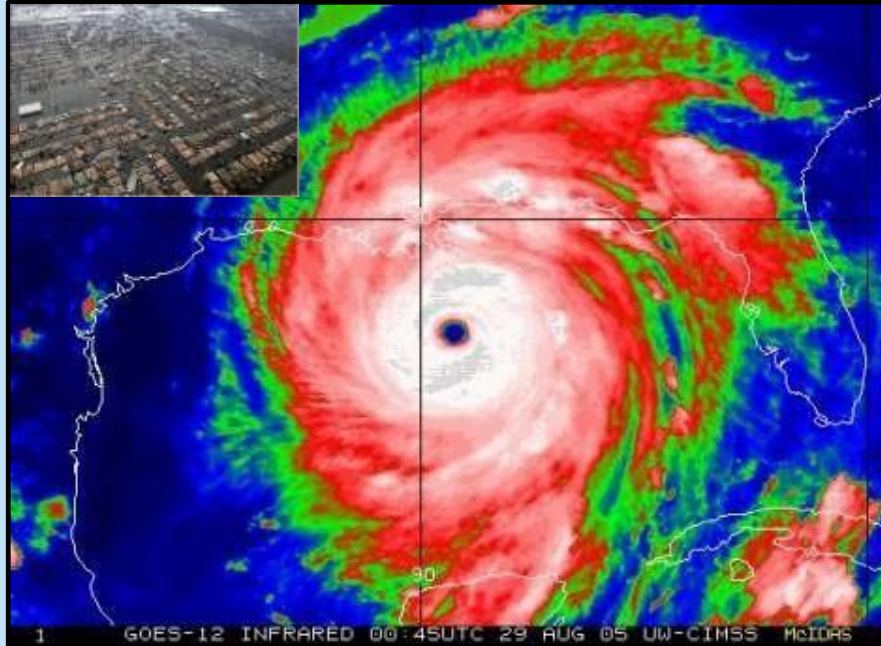
- 02,03,15,17,18,022,066
- 100,101,102,103,105,106,110,111
- 112
- 113,114,115,117,118,119
- 122,123,129,132,133,180
- 190,191,193,197,199
- 911
- 991,993,995,997,998,999
- 000 (Triple 0)
- Others
- No data



**Saving Lives Through Technology**  
**Since 2001**

# In an EMERGENCY...

## Seconds make the difference



**Katrina**





During these disasters Voice Calls Would Not Go Through

\*\*\* BUT \*\*\*

**Text Messaging Continued to Work**



**NY Towers 9/11**



**Northridge Earth Quake**



**New York Blackout**



**Oklahoma Tornado Aftermath**



# S.A.F.E. Special Features

- ❖ Works with all 180 USA carriers
- ❖ Carrier and handset agnostic
- ❖ Harvests real-time anonymized/anonymous cellular data
- ❖ No subscription required
- ❖ Geospatial targeting (geo fence)
- ❖ Class "0" Priority Messaging with Flash
- ❖ Special ring tone
- ❖ Text to speech conversion
- ❖ Concatenation
- ❖ Message tracking and verification
- ❖ Traffic routing
- ❖ Over-The-Air (OTA) Device Programming
- ❖ 24/7/365 active with auto switching backup
- ❖ Unique Advanced Weather Prediction Technology

# S.A.F E. Advantages

- ❖ Identifies and specifies a targeted, mobile phone(s) by its mobile number and real-time location
- ❖ Transmits emergency alert messages one-to-one or one-to-many utilizing a proprietary platform
- ❖ Competitors only have the ability to transmit an outgoing text (broadcasts text message alert) without receiving any knowledge of the individuals specific location, mobile phone number or the requested read receipt that is included with each text message
- ❖ Tracks and audits the movement of each mobile phone within a targeted area
- ❖ Will receive a text message acknowledgement from a victim(s) in trouble informing, central dispatch of their situation for mobilizing first responders
- ❖ Offers a broader range of location based applications services than competitors

# Benefits of Utilizing S.A.F E. *Emergency System Alert*

- ❖ Removes the dependency on commercial TV and radio broadcasters for announcing emergency events
- ❖ Provides quicker “in-house” capabilities for notifying the public in the event of an emergency
- ❖ Broadcasts alerts to a higher percentage of residence in addition to the state visitor population
- ❖ More efficiently informs, directs and delegates instructions to public
- ❖ Frees critical government professional emergency resources in order to address the highest priority tasks
- ❖ Provides an electronic audit trail for sending, receiving and readings of the emergency alerts
- ❖ Improving government legacy systems with immediate and effective public self-help emergency assistance

# ROAMING GEOFENCE

**Real Time Tracking of individual hurricanes, storms and other catastrophic acts of nature. S.A.F.E. provides evacuation directions and updates, to all people in potential danger of being effected by any of the events.**

**Reference-position Geofencing, targeting a sporting venue. Ability to direct exiting by specific rows and sections.**

**Hurricanes and Tornados  
Real Time Tracking**

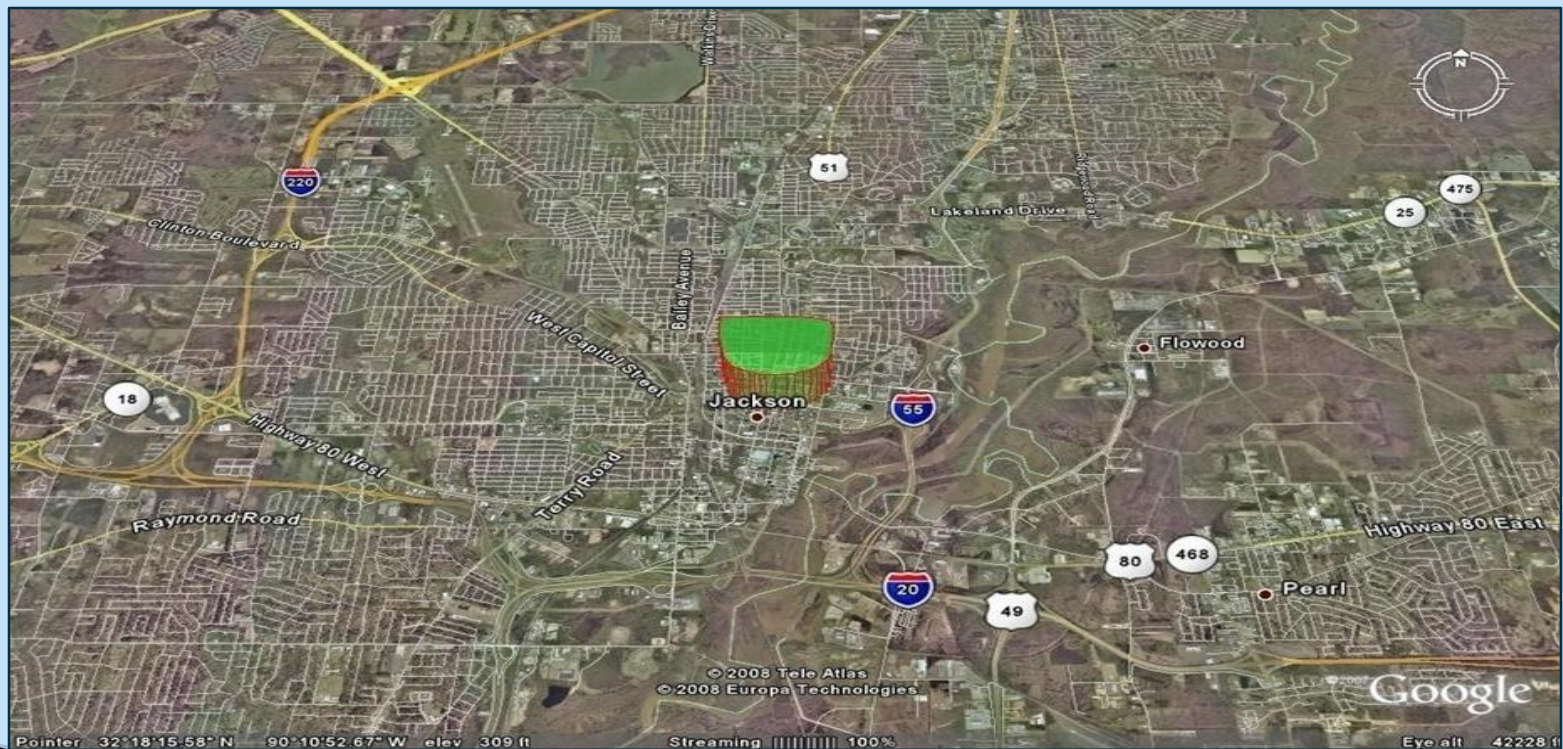




# Geo Fence Input Screen

The *Fence* can be drawn free hand with a mouse on any mapping or GIS legacy system.

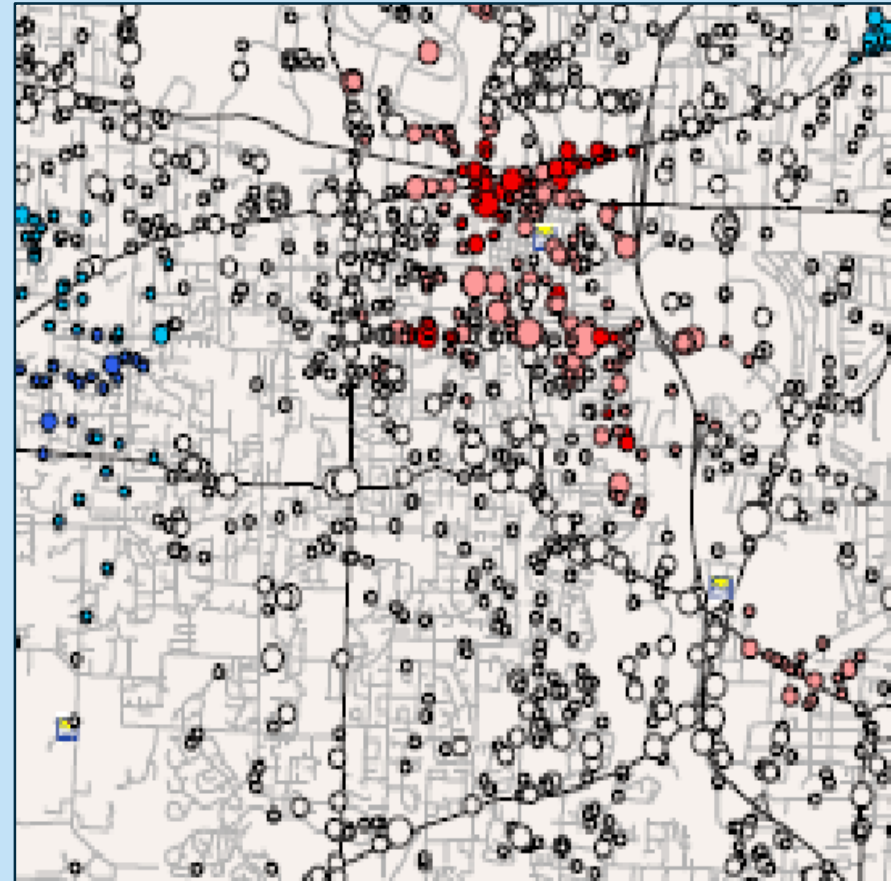
Create a unique event around a Physical Location which will Creates “A Digital Barrier”





## 911(Country Specific Emergency Number)

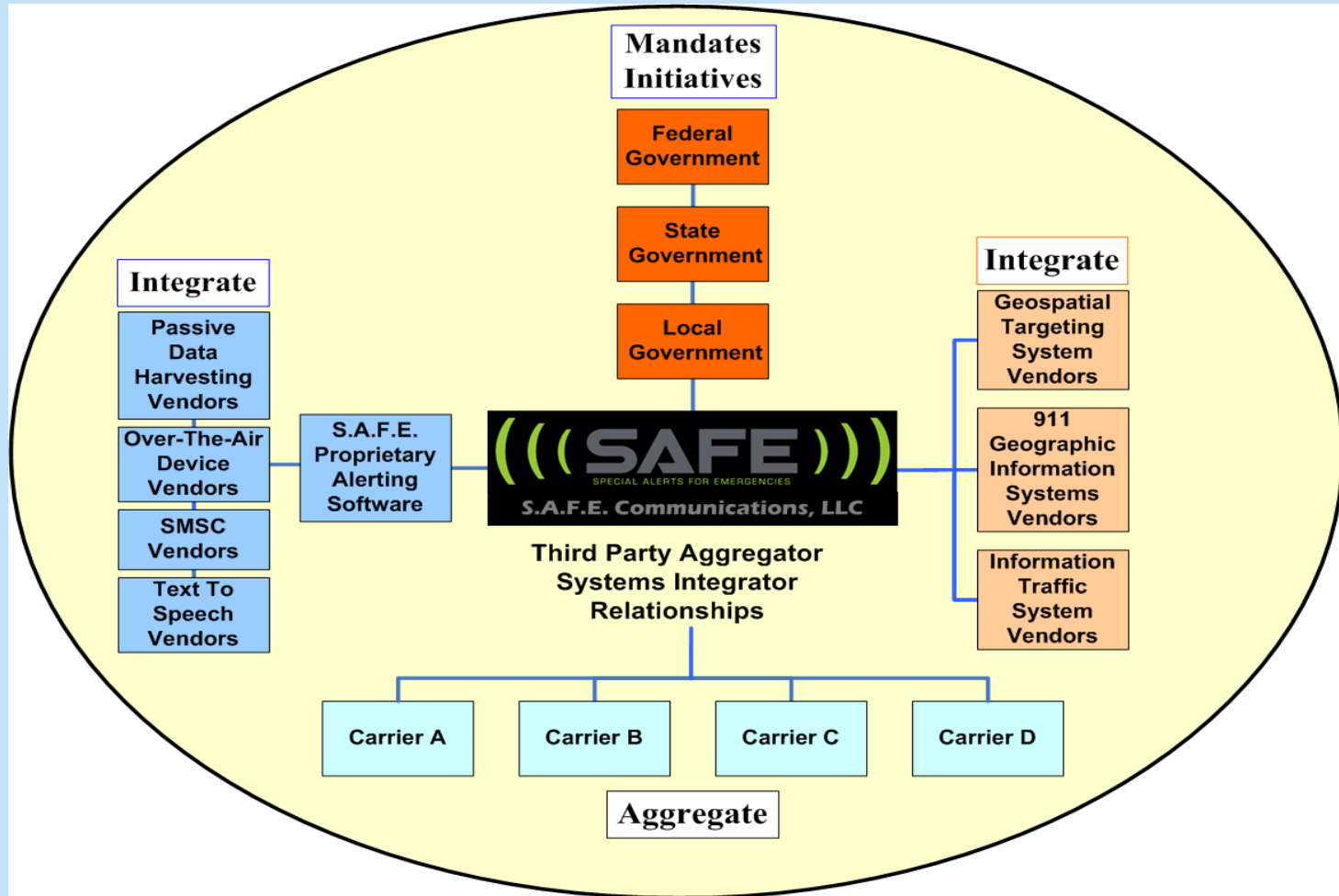
Prior to a call reaching the 911 dispatch center, the S.A.F.E. Interactive Mapping Technology, identifies the “Hotspots” locations on country specific map (Red Dots). These are Geographically displayed and require first responder attention



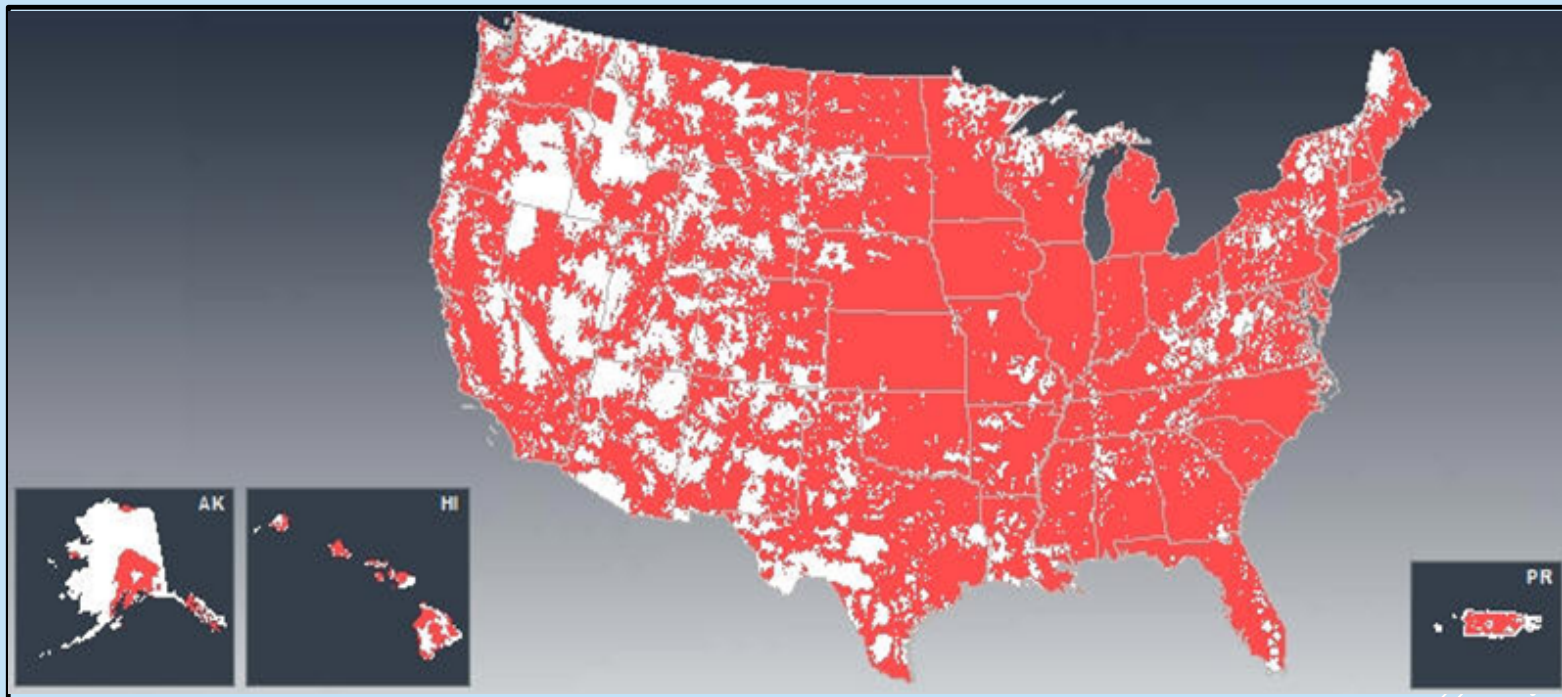
# S.A.F.E. Emergency Alerts Provide Broadcast Priority Messaging

- ❖ Border Alerts
- ❖ State or local government authorities
- ❖ Terrorist Alerts
- ❖ Weather Alerts – Unique and timely
- ❖ Individual tornado tracking with a ***roaming geo fence***
- ❖ Schools, Colleges and University Campuses
- ❖ Sporting Venues
- ❖ Blue Alerts – Ashanti Alert Act of 2018
- ❖ Violent Criminals - Kimberly's Call
- ❖ Within specified geospatial targeted areas
- ❖ Silver Alerts - Mattie's Call
- ❖ Amber Alerts - Levi's Call

# S.A.F.E. Assembles Partners and Resources



As of 2020 there are over **442.6+ Million**  
Mobile Devices in America (85+M non-smart phones)  
Covering Approximately **95%** of the Land Area



Cellular Coverage Across The USA



# During School Emergency Events

## Text Messages Can Make the Difference



- ❖ Pre programmed text message alert to teachers and staff of emergency event
- ❖ Pre programmed text message alert to inform teachers, staff of next steps to follow
- ❖ Pre programmed text message alert for evacuation routing to bus drivers, teachers
- ❖ Pre programmed text message to parents, guardians of actions to take
- ❖ Periodic, customized text message(s) during and aftermath with periodic progress updates to teachers, staff, parents, guardians

School  
Shooting



# *During BORDER Emergency Events Text Messages Can Also Make the Difference*

- ❖ Pre programmed text message alert to border security agents
- ❖ Pre programmed text message alert to inform of next steps to take
- ❖ Pre programmed text message to area residents of actions being taken
- ❖ Periodic, customized text message(s) during and after with periodic progress updates to designated areas





*Lack of Communications and Weather-Event Tools*  
*(can add to the devastating effects of an event)*



***“Snowmageddon”***

Atlanta Snow Storm of 2014

S.A.F.E. Confidential

Thank You



# S.A.F.E. ALERTS



Our Technology Sends Special **Emergency Text Alerts** to all Cell Phones Found in any Defined Venue or Country. We Protect You by Providing Real Time Information for all Catastrophic Events Which Potentially Could Affect You and Your Loved Ones!

For Additional Information Contact:

Stephen R. Winters, Managing Director

404.276.1700

Eric L. Ruud, SVP of Business Development

678.462.1777