



ANALYTICS DESIGN
CONVERGING TECHNOLOGIES

DISPLAY TECHNOLOGIES



ANALYTICS DESIGN
CONVERGING TECHNOLOGIES

Analytics Design Converging Technologies

Beyond the limits of Human imagination

An Industry 4.0 Organization

ALL RIGHTS RESERVED © 2024 ANALYTICS DESIGN CONVERGING TECHNOLOGIES - ALL RIGHTS RESERVED.





HYNITS

DISPLAY SOLUTIONS

DIGITAL SIGNAGE

INTERACTIVE FLAT PANEL DISPLAY

LCD VIDEO WALLS

EXTRA LARGE MONITORS

INTERACTIVE COFFEE TABLES

OUTDOOR LED VIDEO WALLS

OUTDOOR SIGNAGE

MOBILE & PORTABLE LED SCREENS

CUSTOM LED SCREENS

ELECTRONIC PODIUMS



ABOUT US



ENHANCE
INTELLIGENCE

Analytics Design Converging Technologies

Beyond the limits of Human imagination

Who am I ?

I am Analytics Design Converging Technologies and I represent the future of emerging technologies. I am for people who are committed to uphold quality, precision and speed when it comes to finding Design & Engineering solutions to ensure a great future. I am from Industry 4.0 to revolutionize the future.

Where do I come from ?

I am an offshoot of Industry 4.0 and have decades of meritorious involvement in the design and installation of engineering systems across big corporate and government agencies across the world.

What do I do ?

I have excelled in synergising various modern-day Engineering, Designing and Trading Services to provide holistic solutions to the corporates and facilitate productivity and optimization for both today and tomorrow.

What am I like a person?

I am uncompromising and committed to achieve perfectionism in whatever I do.

Who am I for?

I am for people who are committed to up-hold, quality, precision and speed with it comes to delivering engineering solutions that stand the test of time. I stand for humans who believe in a future where machines and humans co-exist in an intelligent and smart world.

What do I fight for?

I fight to get solutions that stand the test of time.

What makes me different ?

My capacity to take an idea from inception to success while being rooted in the ethos, expectations and sensibilities of my audience. To succeed, I use design techniques and science methodically with utmost precision to create Design & Engineering solutions that stand the test of time.

Designing concepts that transform space

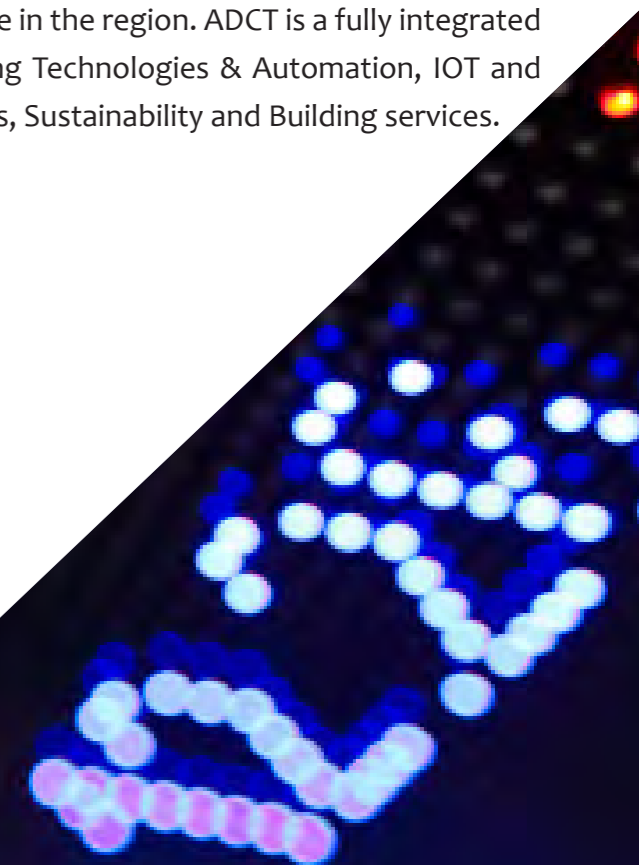
Step in to the ultimate world of engineering and technology where solutions are tailor-made to suite each of our clients. We are part of Industry 4.0, where our engineering solutions are driven by a passion to engage day to day engineering problems with emerging technologies to provide every client with simple timeless solutions with an accelerated return of investment. Analytics Design Converging Technologies caters to the global community's most discerning clientele, offering a wide array of services and products ranging from Artificial Intelligence and Robotics to Industrial Automation & Robotic process automation, Project Management and Consulting services to Sustainability & Energy Engineering and Emerging technologies. With an instinctive understanding of our client's desires, requirements and objectives, we set out to match them in every possible way. We have always stood for people who are committed to uphold quality, precision and speed when it comes to finding Design & Engineering solutions to ensure a great future. We, the people at ADCT recognize that people are our most valuable asset. Our Motto is "encourage consistent behavior that reflects our values of honesty, compassion, consideration for self and others", excellence in effort, desire for personal growth, concern for our company, society, mankind and our planet". We encourage each person to reach their potential and honor their achievement. The strategy to reach our goals is to closely work with every client to understand their requirements and provide solutions that stand the test of time.

Crafting simple timeless solutions

Analytics Design Converging Technologies has established various strategic partnerships, alliances and joint ventures with some of the most trusted names in their fields. Through innovation and by partnering with global companies to bring international expertise to the local and regional markets. Analytics design Converging Technologies is setting the standards for emerging technologies and engineering services with the aim of becoming the service provider of choice in the region. ADCT is a fully integrated company that operates through four major divisions: Emerging Technologies & Automation, IOT and Smart systems, Engineering Consultancy & Lead Design services, Sustainability and Building services.

Economic Viability

As an evolutionary process based on ever changing market scenarios, we constantly develop, maintain and communicate a business plan that is flexible, up-to-date & visionary resulting in an efficient use of available resources for current and future needs. We believe in making the best efforts within the constraints of space, time and resources. We truly believe in engineering solutions to provide all our clients with the best of a return of investment on assets and manpower



DIGITAL SIGNAGE

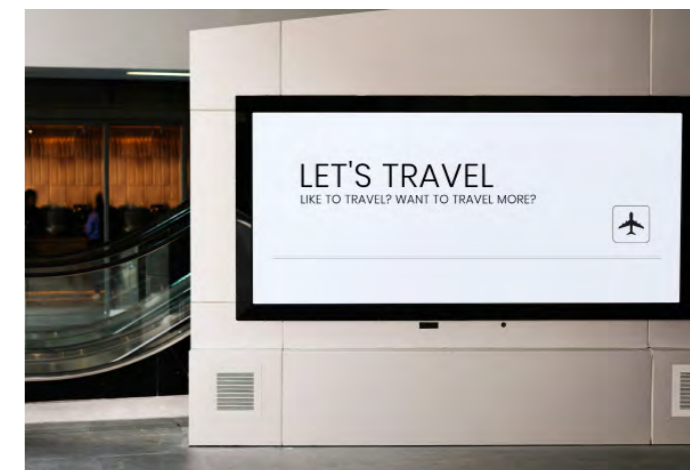
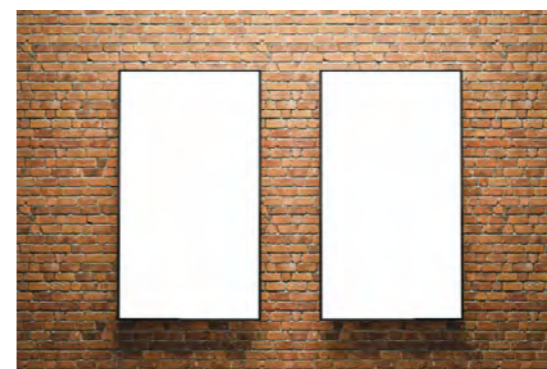
FLOOR MOUNTED DIGITAL SIGNAGE

32", 43", 49", 55", 65"



WALL MOUNTED DIGITAL SIGNAGE

32", 43", 49", 55", 65", 75", 86"



ALL IN-ONE KIOSK

32", 43", 49", 55"



BAR / STRETCHED LCD DISPLAY

19" /23.1" /24" /28" /37" /48"



DIGITAL BILLBOARD

32", 43", 49", 55"



SUPER NARROW SQUARE DISPLAY

22" /33.2"



Technical Features

OS : Android / Windows / customizable

Mounting : Wall mounted / Floor standing / All in one Kiosk / Bar stretch display

Interactive type : Touch interactive capacitive or IR (multi-touch) or non-touch

Media display : In built media player (OS)

Connections : wired Ethernet / wireless

Additional features : Boot logo customization, media content customization, support horizontal and vertical screens, partition split screen display, professional commercial function menu, boot screen, video replacement, can be equipped with multimedia information release system and other third-party software.

Applicable scenarios: financial industry, museums, hotels, enterprises and institutions, hospitals, schools, shopping malls, stations, airports, restaurants, retail stores and other commercial scenarios.

SQUARE SCREEN LCD DISPLAY

22" , 33.2"



FLOOR STANDING DIGITAL SIGNAGE

32" , 43" , 49" , 55" , 65" , 84"



PRODUCT PARAMETERS

Display	Contrast Ratio	1000:1	
	Brightness cd/m ²	500 cd/m ²	
	Aspect Ratio	1:1	
	Active Area	394.56(H)x394.56(V) / 596.16(H)x596.16(V)	
	LCD Type	a-Si TFT active matrix	
	Color Depth	8bit, 16.7 M	
	Resolution	1920x1920	
	Pixel Pitch	0.364(H) x 0.364(W)	
	Viewing Angle(U/D, L/R)	178° (H) 178° (V)	
	Processing	CPU	All Winner A83T, Octa-Core ARM Cortex ARM Cortex A7 2.0 GHz
GPU		PowerVR SGX5-11	
RAM		DDR3 1 G {Up to 2G}	
Storage		EMM C 8G/16G/32G Optional (Standard 8G)	
Network		RJ45 WIFI 3G/4G(optional), WCDMA, EVDO, CDMA GSM850/900/1800/1900MHz/21100 MHz	
Interface			1 *HDMI 1.4 output 1080P
			2*USB
			TF upto 64G
OS		Operating System	Android (USB & Standalone version is optional)
		Language	Multi-Language Supported

PRODUCT PARAMETERS

Display	Display Mode	ADS/ IPS	
	Resolution	1920 * 1080	
	BLU Type	E-LED	
	Brightness	380 Cd/m ²	
	Viewing Angle(U/D, L/R)	178 (H) / 178 (V)	
	Contrast Ratio	1200:1	
	Color Gamut	72%	
	Uniformity	75%	
	Processing	Operating System	Windows / Android
		CPU	Optional / as per system
RAM		DDR 3 4G	
Hard Disk		2.5" HDD 500 G	
Interface		2 X USB 2.0 1 X RJ45	
Optional function		WI FI (optional), Bluetooth(optional), 3G (optional), 4G(optional) VGA(optional), HDMI(optional)	
Speaker		8 ohms /5W x 2	
Magnetic circuit type		inner-magnet	
Other Features		Maximum Volume	94+3db
		Audio Mode	stereo
	Housing Material	SP CC/ AL customised with metallic lacquer "	
	Color	white/black/customized	

WALL MOUNTED DIGITAL SIGNAGE

21.5", 32", 43", 49" | 55" | 65" | 84" | 95"



FLOOR STANDING TOUCH KIOSK

32", 43", 49", 55"



PRODUCT PARAMETERS

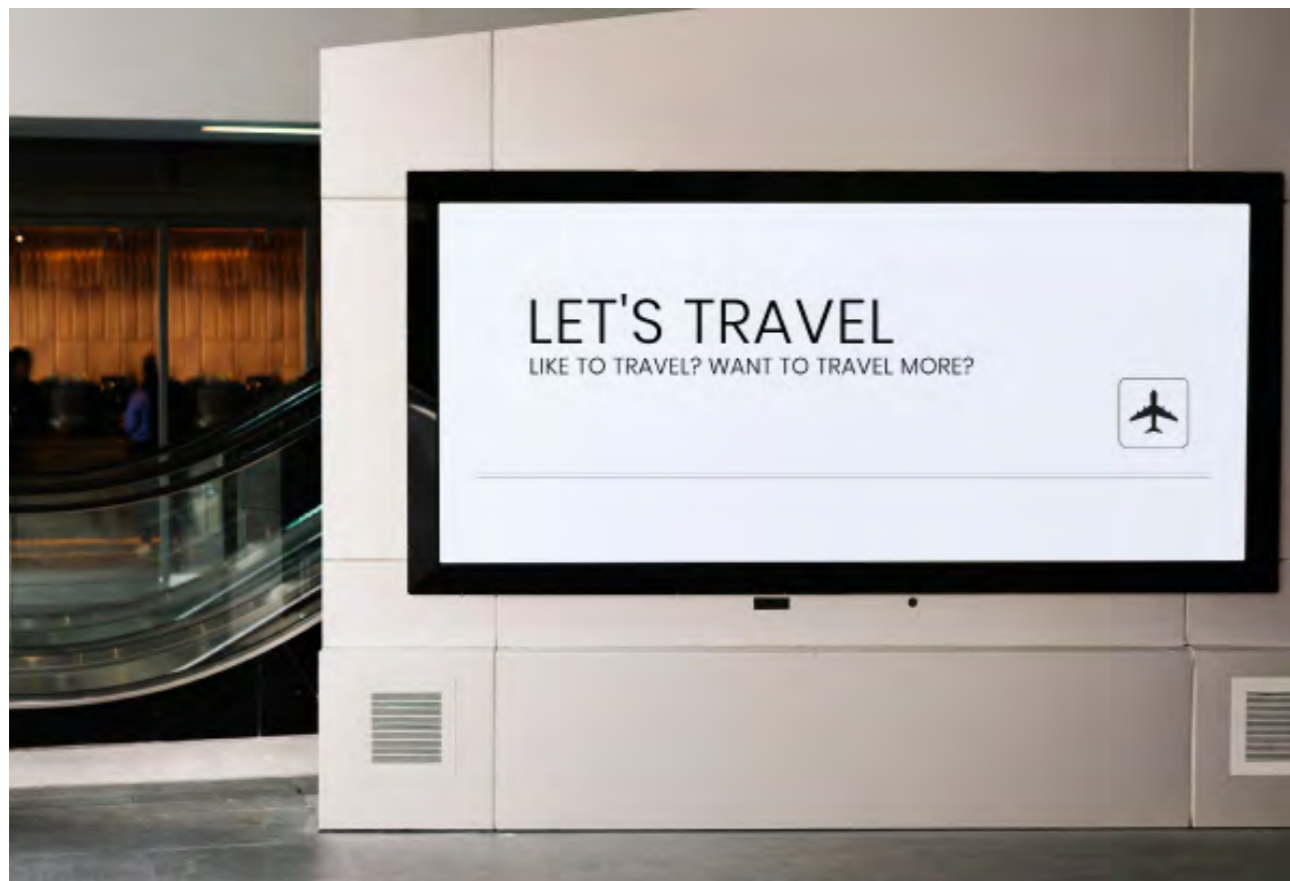
Display	Mode	ADS/ IPS	
	Resolution	1920 * 1080	
	BLU Type	E-LED	
	Brightness	380 Cd/m2	
	Viewing Angle(U/D, L/R)	178 (H) / 178 (V)	
	Contrast Ratio	1200:1	
	Color Gamut	72%	
	Uniformity	75%	
	Processing	Operating System	Windows / Android
		CPU	Optional / as per system
RAM		DDR 3 4G	
Hard Disk		2.5" HDD 500 G	
Interface		2 X USB 2.0 1 X RJ45	
Optional function		WI FI (optional), Bluetooth(optional), 3G (optional), 4G(optional) VGA(optional), HDMI(optional)	
Other Features	Speaker	8 ohms /5W x 2	
	Magnetic circuit type	inner-magnet	
	Maximum Volume	94+3db	
	Audio Mode	stereo	
	Housing Material Color	SP CC/ AL customised with metallic lacquer " white/black/customized	

PRODUCT PARAMETERS

Display	Aspect Ratio	16:9
	Response Time	5.5ms
	Resolution	1920X1080
	Contrast Ratio	1200:1
	Brightness	380cd/m'
	Display Color (Max)	16.7M
	Viewing Angle(U/D, L/R)	178° (H) / 178° (V)
	Type	IR/NANO/CAPACITIVE Touch
	Touch point	6 points (10 points optional)
	Resolution	4096x4096
Processing	Response time	Dual touch:first click:8ms,continuous: 8ms Single touch: first click: 8ms,continuous:3ms Single: highest 300 dot/s, dual touch:125 dots/s
	Cursor blink speed	
	Operating System	Windows or Android
Other Features	CPU	Optional according to the system
	Chipsets	Intel chipsets
	GPU	Integrated graphics
	RAM	2G/ 4G /8G / 16G
	Hard Disk	500G (option: SSD)
Other Features	Stereo Speaker	2 X 10 W
	Optional function	WI FI (optional) , Bluetooth (optional). 3G (optional I , 4G (optional) , VGA (optional) , HDMI (optional)

STRETCHED BAR LCD DISPLAY

19", 21", 23.1", 24", 28", 36.6", 48", 86"



DIGITAL BILLBOARD

32", 43", 49", 55"



PRODUCT PARAMETERS

Display	Active Area	As per panel size
	LCD Type	a-Si TFT active matrix
	Color Depth	8 bit, 16.7 M
	Resolution	1920x360 /1920x132 /1920x290/3840x720 /3840x600
	Pixel Pitch	0.364(H) x 0.364(W)
Viewing Angle(U/D, L/R)	178° (H) / 178° (V)	
Processing	CPU	All Winner A83T, Octa-Core ARNI Cortex A7 2.0 GHz
	GPU	PowerVR SGX544
	RAM	DDR3 1 G(Up to 2G)
	Storage	EMMC C 8G/16G/32G Optional (Standard 8G)
	Network	RJ45 WIFI 3G/4G(optional), WCDMA, EVDO, CDMA, GSM850/900/1800/1900MHz/2100MHz
Other Features	Interface	1*HDMI 1.4output 1080P
		TF upto 64G
		2*USB 2
	Sound	10 W x 2 8 Ohm speakers
	Operating System	Android
Language	Multi-Language Supported	

PRODUCT PARAMETERS

Display	Aspect Ratio	16:9	
	Response Time	5.5 ms	
	Resolution	1920 x 1080	
	Contrast Ratio	1200 : 1	
	Brightness	380 Cd/m2	
Display Color (Max)	16.7 M		
Viewing Angle(U/D, L/R)	178° (H) / 178° (V)		
Processing	OS	Windows or Android	
	CPU	Optional according to the system	
	GPU	Integrated graphics	
	RAM	2G(4G/8G/16G option)	
	ROM	8G(16G/32G/64G option)	
Hard Disk	500G (Option: SSD)		
Touch & Other	Features	Stereo Speakers, 2x10 W	
	Network	LAN(RJ45) / WIFI / Bluetooth	
	Optional Function	3G/4G I optional) /VGA (optional I/ HDMI I optional)	
	Type	IR or Capacitive multi-touch for optional	
	Touch Points	10 point multi-touch	
	Resolution	4096 X 4096	
	Response time	Dual touch:first click:8ms,continuous:8ms	
		Single touch: first click: 8ms,continuous:3ms	

INTERACTIVE FLAT PANEL DISPLAY

HYNITS 4K UHD Interactive flat-panel displays (IFPDs) are ideal for meeting rooms and collaborative spaces. They are a replacement for clunky or outdated projector technology with a higher-quality display, enhanced connectivity, and built-in software solutions. HYNITS IFPD are optimized for LOGITECH Rally Plus Video conferencing systems as they seamlessly work in tandem to enhance meetings by completely eliminating the use of laptops or PC's for video conferencing.



An illustration of an interactive flat panel

INTERACTIVE FLAT PANEL SERIES

HYNITS interactive flat panel series integrates projection, computing power, high definition Audio, 4K UHD screen, whiteboard and an HD camera for video conferencing to create a new image for interactive solutions.

HT Series

65"/75"/86"/98"

- Android 11.0 OS, 4GB(RAM) + 32GB(ROM)
- Resolution: 3840(H)*2160(V);
- Anti-glare tempered glass
- High precision Infrared 20 point touch
- Built-in Whiteboard and Wireless screen-share APP
- Built-in split screen software support dual tasks Running at the same time
- With front Type-C interface
- Built-in 6 arrays microphone (Optional)
- Reserve OPS interface or OPS is Optional



HY Series

65"/75"/86"/98"

- Android 11.0 OS, 4GB(RAM) + 32GB(ROM)
- Resolution: 3840(H)*2160(V);
- Anti-glare tempered glass
- High precision Infrared 20 point touch
- Built-in Whiteboard and Wireless screen-share APP
- Built-in split screen software support dual tasks Running at the same time
- With front Type-C interface
- Built-in 13MP Autofocus camera (Optional)
- Built-in 6 arrays microphone (Optional)
- Reserve OPS interface or OPS is Optional



HYNITS interactive flat panel HT & HY series are both optimized to work seamlessly with Microsoft Teams and Logitech Rally Plus video conferencing systems. Laptops or PC's are not required for Video conferencing / collaboration meetings.



Windows / iOS/ Masc OS / Android - compatible

6 MACHINES IN ONE
“ONE STEP FOR SMART OFFICE”

Integrating projection, electronic whiteboard, computing power, microphone and audio and video functions into one machine with multiple functions and superior performance.

WIRELESS SCREEN SHARE

Support computer, tablet, and mobile screen projection to the interactive flat panel and can support four screen projections at the same time, greatly improving presentations and interactive efficiency.



Multi-Device Screen share . Upto 5 devices at a time

Logitech Integrated,
Internal / External
camera integration

20-Point Multi touch

6-array microphones

in-built Video
conferencing
software

REMOTE VIDEO CONFERENCING
“EASILY COMMUNICATE WITH REMOTE PARTNERS”

Start a video conference, communicate like you are on the spot and collaborate as fast as lightning, compatible with a variety of video conference platforms.

Multi-platform
simultaneous screen share
Windows /Android/ MacOS / iOS devices can be
connected simultaneously for content sharing.



4K UHD Display

8-10 ms Response
speed

+/- 2mm
fine writing

Anti-Glare Panel
MOHS Level 7
brightness

4K ULTRA-CLEAR ANTI-GLARE COMMERCIAL IPS HARD SCREEN,
“PICTURE QUALITY IS BETTER”

High-quality 4K screen, the definition is 4 times that of 1080P, the picture is fine and jagged, and the color reproduction is real and accurate, showing the true color.

Smart Pen compatible (Available with the
device)



Screencast: Windows / iOS / Masc OS / Android

PRESENTATIONS & ANNOTATION
“ONE-KEY CIRCLE FOCUS AT ANY TIME”

The annotation mode can be turned on in any interface and the inspiration that flashes by can be recorded at any time, and annotations can be made while explaining and the annotation content can be saved by scanning the code.

SMART WHITEBOARD WRITING
“BRING YOU A SMOOTH GREAT INTERACTIVE EXPERIENCE”

Touch technology, equipped with infrared touch screen, 20-point sensitive touch and multi-gesture recognition.



Whiteboard

VIDEO WALL TECHNOLOGIES

HYNITS video wall is a complete display solution ideal for Network operations and control rooms, offices, hospitality and commercial markets. The combination of high definition display units coupled with the state of the art video graphics controller from HYNITS can realize any display combination as required by the user. The system can project a single-screen display, multi-screen displays and any arbitrary video wall combination display as required by the user.

Application scenarios: Network operations and control rooms (NOC's), retail outlets, security monitoring centres, conference halls, exhibition halls, Financial institutions and shopping centres.

LCD Video wall series

Display Type : LED

46"/49"/55"/65"/75"

Technical Parameters

Low maintenance cost

Flexibility and versatility

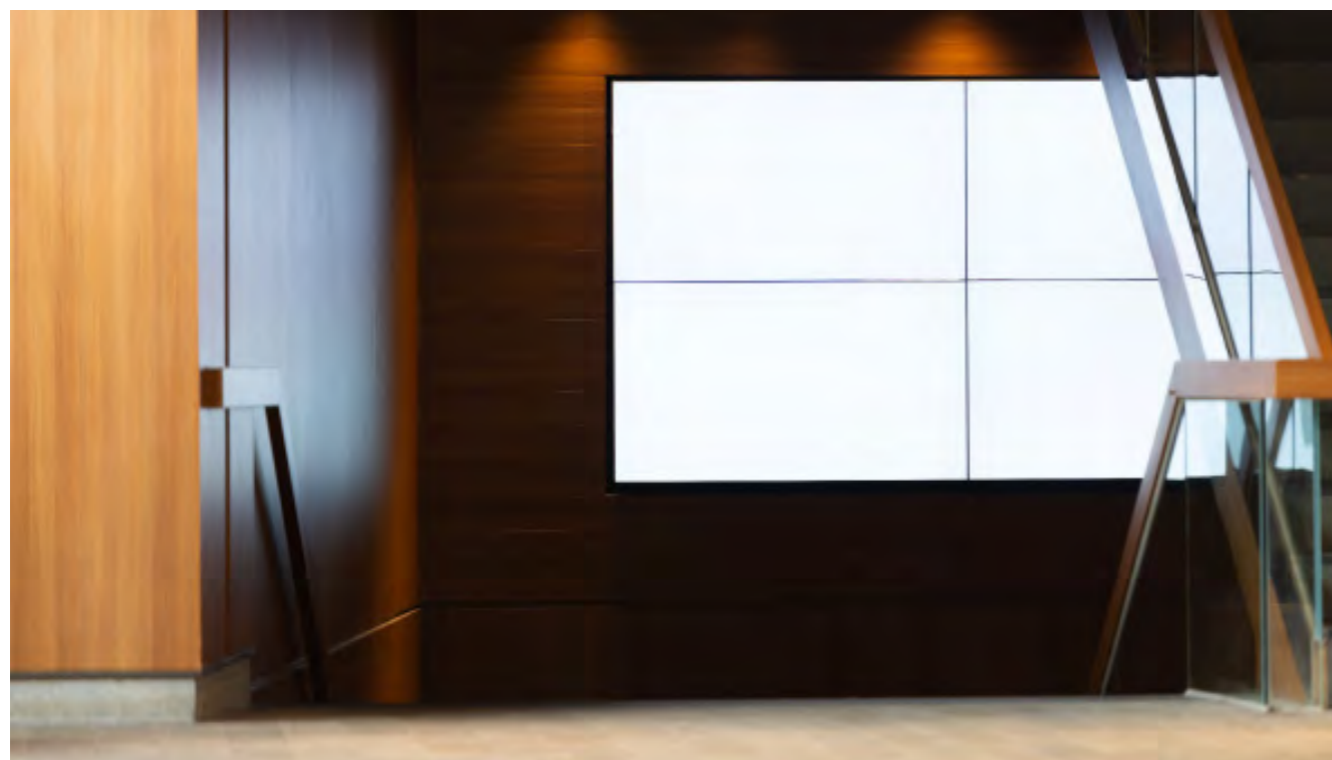
Plentiful dynamic content

Lower investment and quick ROI

Large screen with seamless bezel

Using industrial grade design LCD panel, long-life

Higher resolution display with 178 ° viewing angle



An indoor LCD 2 X 2 array 65" video wall

LCD INDOOR VIDEO WALL SERIES

Display Type : LED



Sizing and Parameters

Size	Bezel	Resolution	Brightness	Active area (mm)	Dimensions (mm)
46"	3.5 mm	1920 x 1080	500 cd/m2	1018.08 x 572.67	1022 x 576.6 x 102.9
46"	1.7 mm	1920 x 1080	500 cd/m2	1018.08 x 572.67	1022 x 576.6 x 102.9
46"	0.88 mm	1920 x 1080	500 cd/m2	1018.08 x 572.67	1022 x 576.6 x 102.9
49"	3.5 mm	1920 x 1080	500 / 700 cd/m2	1074.10 x 604.26	1078.3 x 608.4 x 97.3
55"	3.5 mm	1920 x 1080	500 / 700 cd/m2	1209.60 x 680.40	1213.7 x 684.5 x 100
55"	1.8 mm	1920 x 1080	500 / 700 cd/m2	1209.60 x 680.40	1211.4 x 682.2 x 98.1
55"	0.88 mm	1920 x 1080	500 / 700 cd/m2	1209.60 x 680.40	1211 x 681.8 x 99.2
65"	3.5 mm	3840 x 2160	500 cd/m2	1428.48 x 803.52	1432.6 x 807.6 x 115.1
75"	3.5 mm	3840 x 2160	500 cd/m2	1649.66 x 927.93	1670.9 x 965.0 x 112.0

DISPLAY - MEDIA OUTPUT

SPLIT SCREEN DISPLAY

Arbitrary combination display, full-screen display, single-screen display, image roaming, image overlay, etc. can be realized.

65" 3 X 3 array full screen display



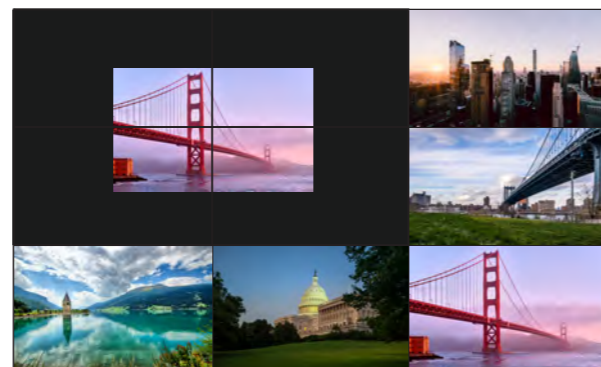
65" 3 X 3 array Multi screen display



65" 3 X 3 array Single screen display



65" 3 X 3 array Image roaming



3D NOISE REDUCTION & COLOR CORRECTION



Noise Reduction to eliminate the rough flickering noise in the image to obtain a smooth and clear image.

SPLICING MODELS - LCD Video walls

65" 3 X 3 array (Landscape)



65" 3 X 3 array (Portrait)



65" 1 X 3 array (Landscape)



65" 3 X 2 array (Landscape)



65" video wall - Arbitrary Splicing



Video wall installation

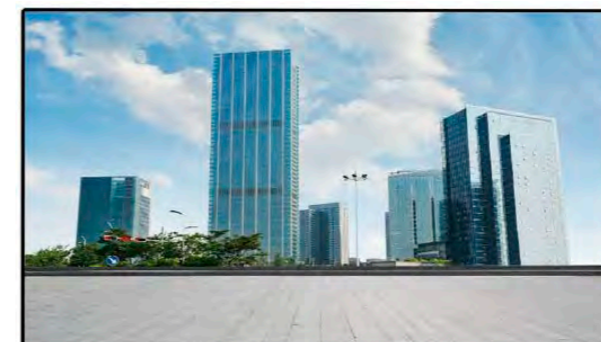


98" Monitor

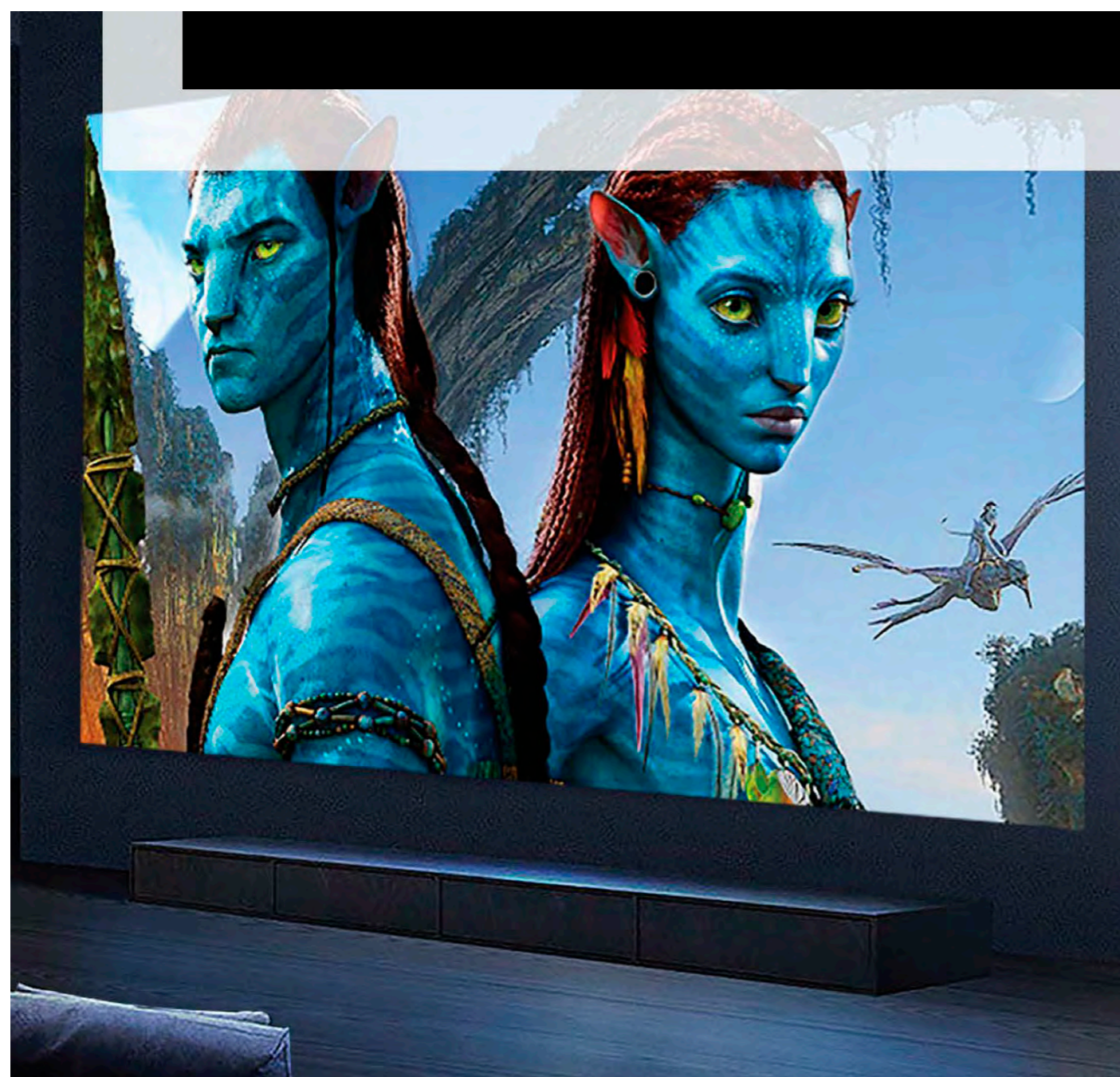
A budget friendly replacement for video walls

A Perfect alternative to a 46" or 49" 2x2 video wall solution

As the display terminal of the closed-circuit monitoring system, the monitor is an indispensable part of the monitoring system in addition to the camera. For a long time, monitors are mainly used in finance, jewellery stores, hospitals, subways, railway stations, airports, exhibition halls, commercial office buildings, leisure and entertainment venues, etc., responsible for security surveillance. Due to the development of technology, the overall cost of CCTV monitoring system has been well adjusted even for small enterprises. This video wall solution from HYNITS is designed keeping in mind the economics of owning and maintaining such a system.



- Four equal ultra narrow fame design
- Support 1 channel DP signal input, maximum support of 3840X2160@60HZ input.
- Support 1-way USB to upgrade and update firm ware.
- Industrial-grade monitoring display panel, 4K ultra Theatre-high-definition display quality.
- Support multi-screen split screen and area display.
- Super bright picture display.
- 7*24 hours of uninterrupted work throughout the day.
- Full hardware architecture, no CPU and operating System.



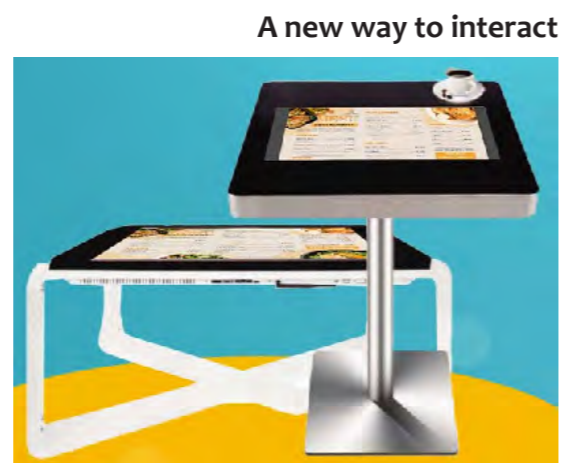
98" monitor, a perfect replacment to a 2 x 2 array 49" / 46" LCD video wall

Resolution	3840 x 2160
Aspect ratio	16: 09
Size of display	2185.85 (H) x 1214.35 (V)
Brightness	<= 500 cd/m2
Angle of view	89/89/89/89 (type)
Contrast ratio	1200 : 1
Depth of color	1.07G
Speed of response	8 ms
Service life	5000 Hrs
USB	* Firmware upgrade
Horn	8 Ohm, 5 watts x 2
Voltage	110 - 240 V, 50/60 Hz
Power	<= 560 Watts
Working Temperature	0 - 50 C
Working Humidity	5 % - 90 % RH
Accessories	Power chord, certificate of warranty
Total Machine size	2188 (L) mm x 1243 (H) mm x 102.3 mm (thickness)
Machine Gross weight	<= 75 Kg
Installation Mode	wall mounted, Hanging hole size 800 mm x 400 mm

INTERACTIVE TOUCH TABLE

Interactive Coffee Table

Full flat PCAP touch screen
 ip65 rated - water proof
 Tempered glass for protection.
 Android or PC based system (optional).



Display	Panel Size	21.5 inch / 43 inch / 55 inch
	Resolution	1920 X 1080 FHD
	Viewing Angle	H178 / V178
Touch Panel	IP Grade	Ip65
	Brightness	300~500nits
	Panel Life	N 50000 hours a
	Touch Screen	PCAP touch
	Touch points	10points
	Response Time	4~8ms
	Glass	Anti-glare mohs 7
Processing	Interface (IZO)	X USB, I X SD, I X HDMI (Support USB plug and play) VGAHDMI inputs (no plug and play)
	CPU	RK3288 / RK3399
	RAM	2GB / 4GB
	Memory	8GB/ 16GB / 32GB
	Android Version	7.1 above
	Network	Wifi / RJ45
	CPU	J1900 / i3/ i5/ i7
	RAM	4GB/8GB
	SSD	64GB / 128GB / 256GB
	O.S	Windows / Linux
Application Scenarios	Restaurants, hotels, Café's	
Interface	Gaming (multi touch screen)	
	Payment gateways	
	Food Menu	
	Food ordering	
	Reviews (options for food reviews / hotel reviews)	



LED OUTDOOR VIDEO WALLS

LED Video walls (Outdoor Video wall solutions)

Panel type	P8 or P10 Panels (End user defined / Scenario defined)
Brightness	4000 Nits and over upto 10,000 Nits
Panel sizes	256 x 256 , 960 x 960 (Varying sizes)
Pixel pitch	0.7 mm to 20 mm
Color reproduction	Ultra wide color gamut DCI-P3 standards



P8 LED Panel



An external LED video wall assembly

Product briefing

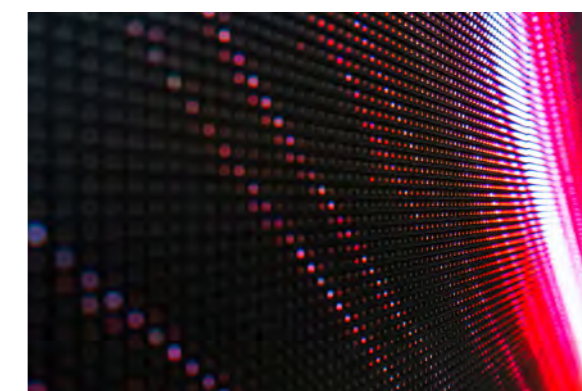
There are many benefits of using an LED outdoor panel, such as:

Energy efficiency: LED panels consume much less energy than traditional lighting sources, such as halogen or fluorescent lamps. This can help you save on your electricity bills and reduce your carbon footprint.

Durability: LED panels are resistant to shock, vibration, rain, hail, dust, and UV rays. They can last up to 50,000 hours or more, which means you don't have to worry about frequent replacements or maintenance.

Brightness: LED panels produce a bright and uniform light that can enhance the visibility and attractiveness of your outdoor space. They can also adjust their brightness according to the ambient light level, which can prevent glare and eye strain.

Variety: LED panels come in different shapes, sizes, colours, and designs. You can choose the one that suits your needs and preferences. You can also customize your LED panel with different features, such as sensors, dimmers, timers, or controllers.



a lit LED Panel

OUTDOOR SIGNAGE

32"/ 43" / 55" (65" and over - customizable) with single or dual screen

Product characteristics

Type	Outdoor digital floor mounted signage (IP65 Rated) / Customizable
Brightness	2000 Nits and over upto 10,000 Nits
Screen Sizes	32", 43" , 55" (65" and over - customizable) with single or dual screen
Body	Aluminium / user defined with IP 65 Ratings

Product Briefing

The manufacturing of the signage shell adopts stainless steel processing technology using high temperature spraying, wear resistant and anti-corrosion techniques to produce a smooth and wear resistant body.

The surface glass is tempered with MOHS GRADE 7 ratings, can also be custom made to MOHS Grade 8 or explosion-proof ratings;

Adopting self-developed patented technology, using air cooling temperature control, no blackening phenomenon under outdoor sunlight;

Use self-developed intelligent monitoring system, which can monitor the operating status of the machine (temperature, humidity, display) etc.;

This product is corrosion resistant, anti-interference with strong lightning protection system.

The equipment is dust-proof, waterproof with anti-theft features

Construction:

Shell made of stainless steel welding

Overall structure stronger and more durable

Surface sprayed with special outdoor paint



A typical 65" IP65 rated Outdoor Signage with MOHS Grade 7 ratings

Appearance	surface Full stainless steel
color	Top outdoor paint case, black border (color)
Material	Stainless steel
LCD Panel	
Size	65 Inch
Brand	BOE/LG
Resolution	3840*2160
Active area	1428.48(H) ×803.52(V)
Brightness	≥2000cd/m2
Visual angle	89°89°(H)/89°89°(V)
Contrast ratio	1200 : 1
Color depth	16.7M
Product Configure	
CPU	Quad-core Cortex-A55 Main frequency is up to 1.9G,Quad-core GPU Mail-G31
Storage	DDR3-2G (4GB optional)
Memory	EMMC 16G (16G/32G optional)
Connectivity	RJ45, supports Ethernet, Wi-Fi 802.11b/g/n protocol Supports full Netcom 4G RS-232 communication protocol.
Interfaces	USB*1 ,RJ45*1,SIM*1
Speaker	Built-in 2 * 8 Ω 10W
Light sense	Support automatic light sensing Auto-brightness adjustment
OS	Android 9.0 or more
Source	Input voltage AC 110-240V, 50/60HZ
Power	510W
Working environment	
Working temperature	-10 c - 50 c
Working humidity	5% - 90% RH
Storage temperature	-20 c - 55 c
Storage humidity	5% - 95% RH
Others accessories	Power cord, qualification certificate Warranty card, fixing screw
Dimensions (excluding base)	2150(H) * 990 (W) * 200mm (D)
Installation Mode	Floor mounted installation



65" Outdoor Signage



Mobile Touch Control Screen

Product characteristics

Operating System: Android 11

Audio System: High-power stereo subwoofer

Touch Points: 10

Display Design: Fully bonded tempered glass, no front frame

Customization: Colours customizable to requirements



Mobile Display unit

LED Screen

Resolution : 1600x900 HD

Ultra-thin (35mm), 97% colour saturation, 8-level adjustable brightness

System: Android 8.0, plug and play.

Performance: Quad-core CPU, high-performance GPU, 3G large memory, 32G storage (expandable)

Functionality: Wireless projection, multi-screen interaction, remote control operation, remote video conferencing

Installation & Convenience: User-level installation, no secondary renovation, wall mountable, one-button switch



Electric Height Adjustable Podium

23.6-inch capacitive touch display

Various interface panels for easy usage and connectivity

HDMI support, 1920x1080@60hz resolution

Materials: Steel and Aluminium construction



Electrically operated Podium

Area of application :

Auditoriums

Schools

Hotels

Available models : Single screen on podium / inbuilt PC with mic, reading light, Multimedia connectivity

: Multi screen on podium / inbuilt PC with mic, reading light, Multimedia connectivity and an additional screen on front or public display.

Fully customizable UI with Windows OS

Electrically operated height adjusting mechanism



ANALYTICS DESIGN
CONVERGING TECHNOLOGIES

Analytics Design Converging Technologies

Dubai, United Arab Emirates

Contact us : info@analyticsdesignsct.com

www.analyticsdesignsct.com

