

CAPABILITY STATEMENT



PRIME CONTRACTING
SERVICES
Self-Performing Company



Contact

Phone: (909) 578-8197
Email: pmendoza.pcs@gmail.com
Address: 11049 Maple St.
Whittier, Ca 90601
Website: primecontractingservicesinc.com



About Us

Prime Contracting Services, Inc. is an SBA 8(a) Certified Heavy and Civil Engineering construction company, established in 2015 by Pablo Mendoza. With 31 years of industry expertise, Pablo has built a reputation for delivering projects with uncompromising integrity, on time, and within budget. As a **self-performing** company, we ensure direct control over project execution, maintaining strict adherence to plans, specifications, and government regulations.

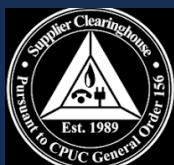
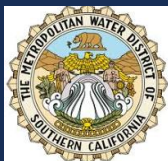


Certifications



SBA 8(a) Case
#C00tYN

DBE File #:
50662



SBE# 1489805

VON# 23002129



CBE/MBE I.D.# 093571
LSBE #: 202117 Record
#: 093570



Past Performance

\$500,000 Aggregate

Riverbed Replacement - Army Corps of Engineers

\$2 Mil

Los Angeles, CA - Successfully repaired and improved 3,500 linear feet of the right and left toes of the LA River by repaving, scarifying, applying epoxy, and pouring concrete to create new maintenance roads.

- Diverted the LA River running at a flow rate of 150 cfs in order to create a safe working environment.
- Implemented measures to work around disturbing endangered bird species.
- Accomplished simultaneous application of epoxy and cement lining along 4000 linear feet of a difficult-to-access road.

La Brea Tar Pits Pump - LACDPW

\$850,000

Los Angeles, CA - Created a cofferdam to establish a dry dock and install a self-gravity pump station. The innovative pump system utilizes the water's natural height to facilitate efficient water transfer through a series of filtered vaults until it eventually connects to the sewer line.

- Successfully established an extensive cofferdam system, utilizing 85,000 gallons of water to create an optimal working stage.
- Implemented stringent safety measures while operating in a potentially hazardous methane environment near the tar pits.
- Skillfully navigated and overcame challenges associated with working around tar deposits.

Marina Ocean Pipe - Beaches & Harbors LACDPW

\$1.1 Mil

Marina Del Rey, CA - Expertly replaced large marina-to-ocean pipes, including the removal of a 7' fiberglass Hobas pipe spanning 2400 linear feet under a busy roadway.

- Methodically created a dry working environment by damming off the marina for the seamless installation of a new, corrosion-resistant pipe.
- Skillfully managed water levels between the laguna and ocean, safeguarding hundreds of seaside homes from potential property damage.
- Demonstrated expertise in preserving water health, fostering stability for flora and fauna between the lagoon and oceanic ecosystems.

Las Flores Retaining Wall - LACDPW

\$1.6 Mil

Malibu, CA - Proficiently designed and constructed 210 feet of retaining walls, expertly incorporating 60-foot tiebacks for exceptional ground stabilization, while adhering to project budget.

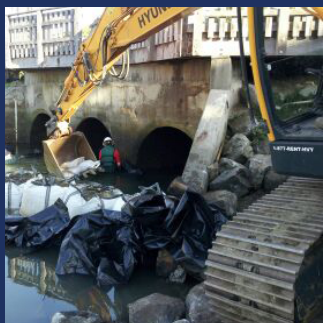
- Successfully implemented tiebacks as a key stabilization method on a complex excavation and retaining wall project, ensuring structural integrity.
- Analyzing soil conditions and selected appropriate anchoring solutions for optimal performance.
- Demonstrated expertise in preserving water health, fostering stability for flora and fauna between the lagoon and oceanic ecosystems.



NAICS Codes

- | | | | |
|----------|----------|----------|----------|
| • 221114 | • 237310 | • 238210 | • 561210 |
| • 236210 | • 237990 | • 238220 | • 562910 |
| • 236220 | • 238110 | • 238320 | |
| • 237110 | • 238120 | • 238910 | |
| • 237120 | • 238140 | • 238990 | |
| • 237130 | • 238190 | • 488490 | |

LACDPW Harbor



Conducted pipe replacement beneath a roadway. Overcame the challenge of navigating corrosive sea conditions, demonstrating adaptability.

La Brea Tar Pit Pump Station



Implemented a cofferdam to create a dry dock and install a self-gravity pump station and transfer to filtered vaults.

125 Ton Press Foundation



Constructed a robust foundation using 100 cubic yards of concrete to provide structural support for a 250,000 lbs press.

Army Corps Conduit



Expertly installed an extensive 3,000 linear feet conduit network, showcasing dedication in contributing to the initiatives of the esteemed Army Corps.

Boathouse Elevator Installation



Constructed an elevator system tailored for a boathouse. Project involved executing tasks over open ocean harbor, necessitating the use of a carefully constructed false bottom.

Riverbed Replacement



Effectively restored 3,500 linear feet of riverbed to facilitate the movement of access vehicles.

Notable Customers

Los Angeles
County
Department of
Public Works



California
Department of
Transportation



Metropolitan
Water District
of Southern
California



Naval Facilities
Engineering
Systems
Command



U.S. Army Corps
of Engineers



U.S. Air Force
Space & Missile
Systems Center



U.S. Air Force Test
Center



Sanitation Districts
of Los Angeles
County



Naval Surface
Warfare Center



Area of Expertise

- Comprehensive street construction knowledge
- Underground infrastructure: storm drain, sewer, water, fiber
- Solar projects: canopy, megawatt solar farms
- Bridge construction: ground-up, poured-in-place, prefabricated
- Retaining walls: CMU, poured-in-place, veneer
- Pile setting and beam drilling
- Extensive experience in MWD projects, aqueduct repair, and solar installations
- Water projects: Pacific Ocean and Colorado River boat landings, sludge gates
- Retrofits of freeway bridges and other freeway initiatives
- Structural expertise, particularly in concrete
- Proficient in Design-Build approach
- Channel construction expertise from ground to finish

Company Info

Prime Contracting

- Cage Code: 8VR70
- UEI: RVS6AZA8JGD7
- DUNS: 056852651
- License #: A-1012545
- DSBS: <https://certify.sba.gov/capabilities/RVS6AZA8JGD7>

Memberships

