

COMPASS



THE HOMES AT

# CRAWFORD PARK



Julia B  
Fee

Sotheby's  
INTERNATIONAL REALTY



4 Elm Hill Drive  
Rye Brook



# 4 Elm Hill Drive

## Rye Brook

---

6 BD 8 BA 5,590 SF \$3,300,000

4 Elm Hill Drive is the second home of the three lot subdivision, Homes at Crawford Park. This sophisticated 5 Bedroom modern new construction colonial home situated for privacy on the corner lot is sure to please all discerning buyers. Be greeted by the inviting front porch and then as you enter the home you will be wowed by the 10 foot ceilings, grand entry foyer, soaring floor to ceiling windows and custom designer finishes throughout. The large open family room is sure to impress. Large family bedrooms all with en-suite bathrooms, big closets, walk out lower level and open concept living areas make this home truly special. You have the ability to have an in-ground heated pool. This attractive .55 acre private landscape is located in the coveted Pine Ridge section of Rye Brook and only seconds from the beautiful Crawford Park. This home gets so much natural sunlight. Enjoy indoor/outdoor living with the impressive eat in kitchen with big sliders to the porcelain patio. Special features include white oak hardwood floors, hardi plank siding/AZEK trim, Anderson windows, granite front walkway, porcelain patio, Thermador Kitchen Appliances, spray foam insulation, high efficiency mechanicals, recessed LED lighting throughout, solid core doors, quartz countertops in kitchen, custom designer bathrooms and a walk out basement. This stylish home is the second home of the 3 home subdivision which abuts to Crawford Park. Enjoy water views. This lot is very private. Expected completion is August 2024.



# 4 Elm Hill Drive

Rye Brook

---

## EXTERIOR

- Hardie Plank Siding
- Azek Trim
- Front Walkway & Porch Porcelain
- Back Walkway & Patio Porcelain
- Asphalt Driveway
- Lawn Sprinklers - front & back
- Andersen 400 Series Windows
- 2 Car Garage
- GAF 30 Year Roof
- 6 Inch Gutters
- 20 x 40 Pool



III  
THE HOMES AT  
CRAWFORD  
PARK

## INTERIOR

- 4 Inch White Oak Floors (1st & 2nd)
- Luxury Vinyl Flooring in Basement
- Recessed Lighting Throughout (4 inch square dimmable LED)
- Solid Core Doors
- Wood Front Door
- Stair Railing; Wood & Metal
- 10 Foot Ceilings
- 60 Inch Electric Fireplace in





## Rye Brook

### KITCHEN

- Thermador Package
- Quartz Countertops
- Quartz Backsplash
- Wood Cabinetry
- Kohler 29 Inch Stainless Sink
- Butler's Pantry
- Pantry Closet



### BATHROOMS

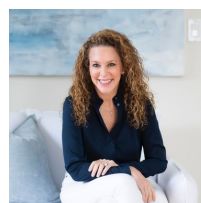
- Kohler Fixtures
- Porcelain Tiles
- Primary Bathroom has large glass shower, tub and double vanity
- Ensuite Bedrooms; 1 Tub & the rest showers



Specs can change, builder makes no warranties



**Kori Sassower**  
COMPASS  
Lic. Assoc. R.E. Broker  
M: 914.727.0169  
kori.sassower@compass.com



**Wendy Alper**  
JULIA B FEE/SOTHEBYS  
Lic. Assoc. R.E. Broker  
M: 914.806.6868  
wendy.alper@juliabfee.com