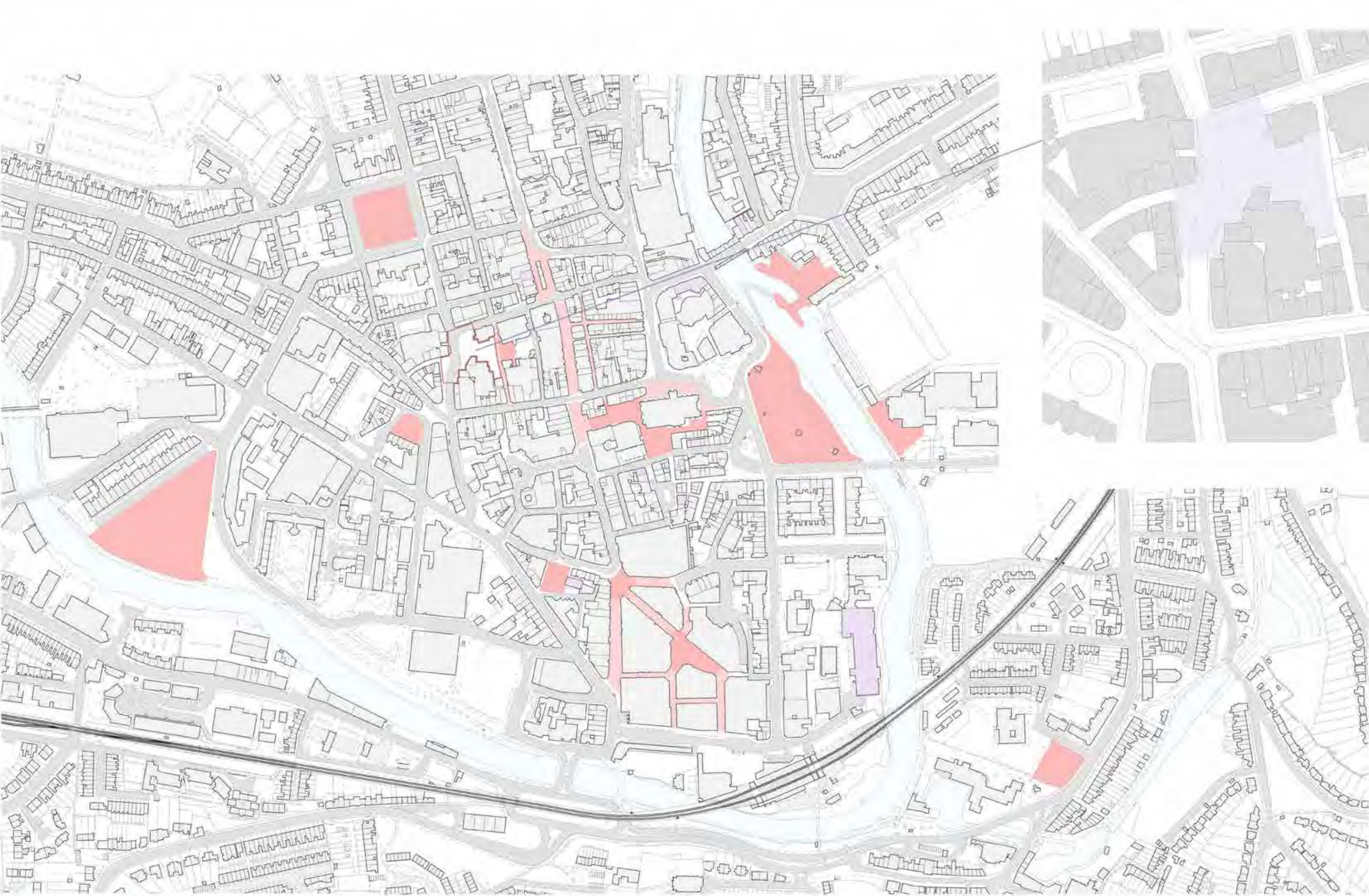
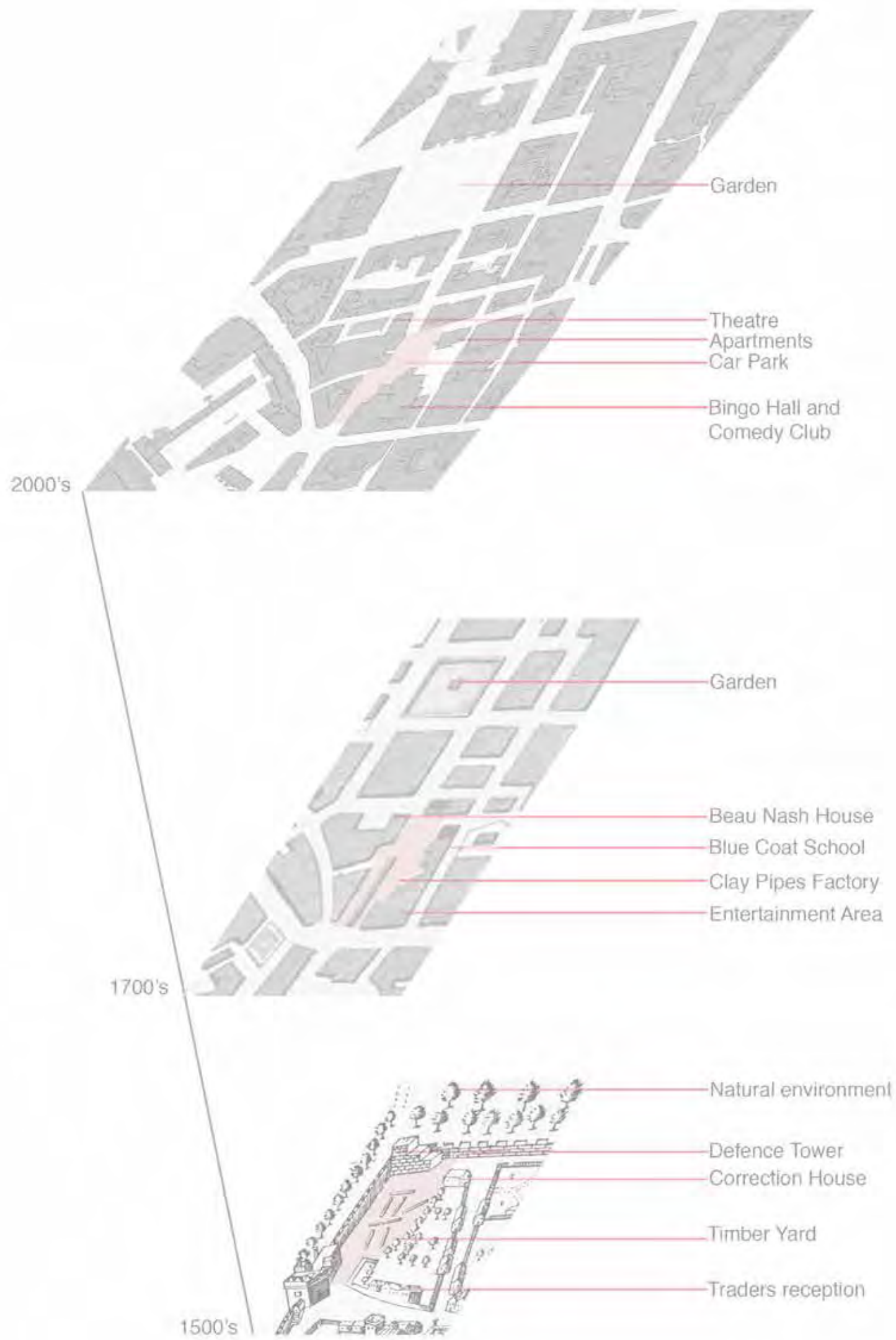


Architecture for existing









Modern and Medieval  
maps over lay  
1:500







BARTON STREET      UPPER BOROUGH      Bluecoat House      Regency Garage      Lyric Tower      Market



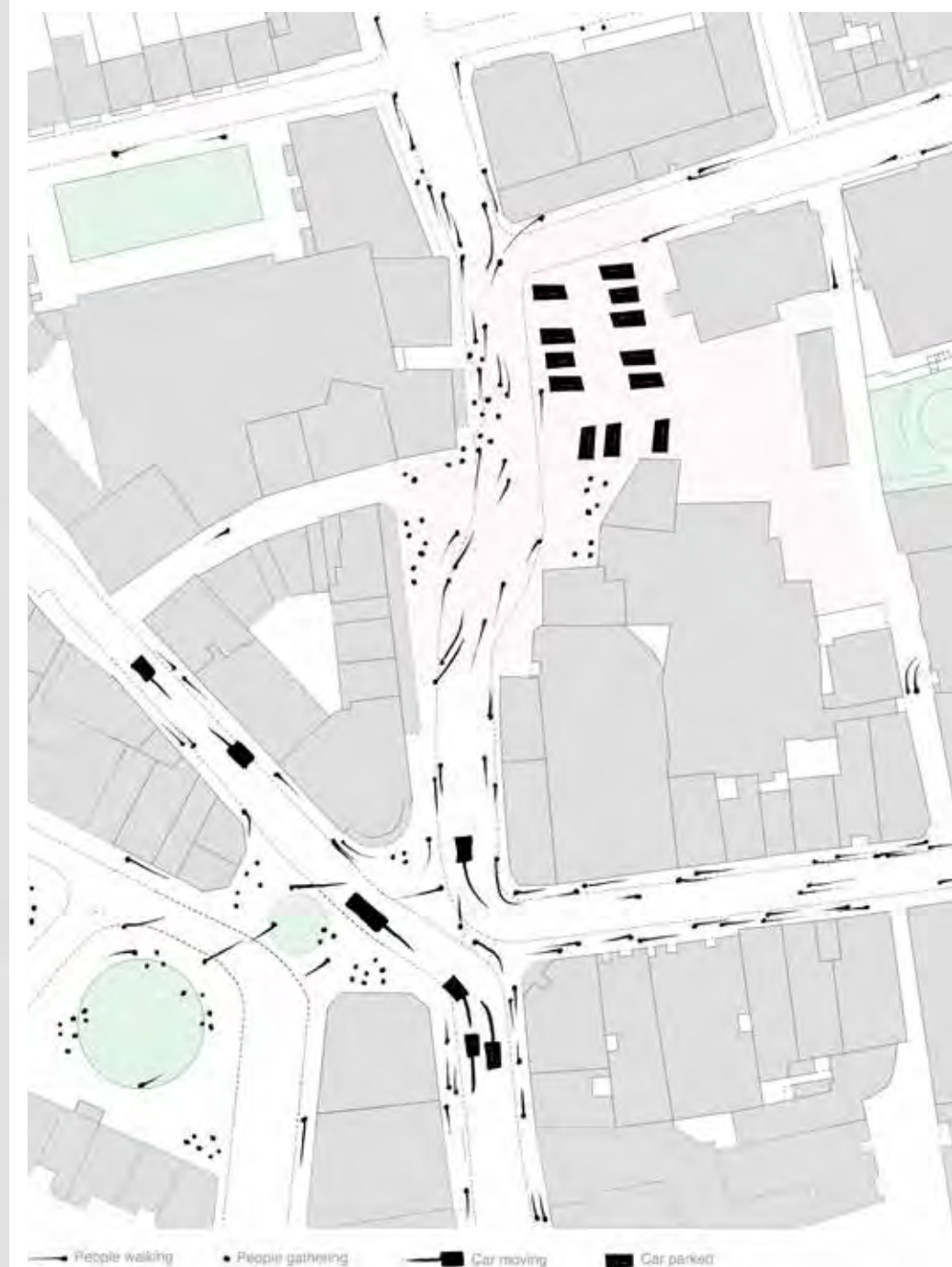
BRIDEWELL LANE

Seven Dials

SAW CLOSE

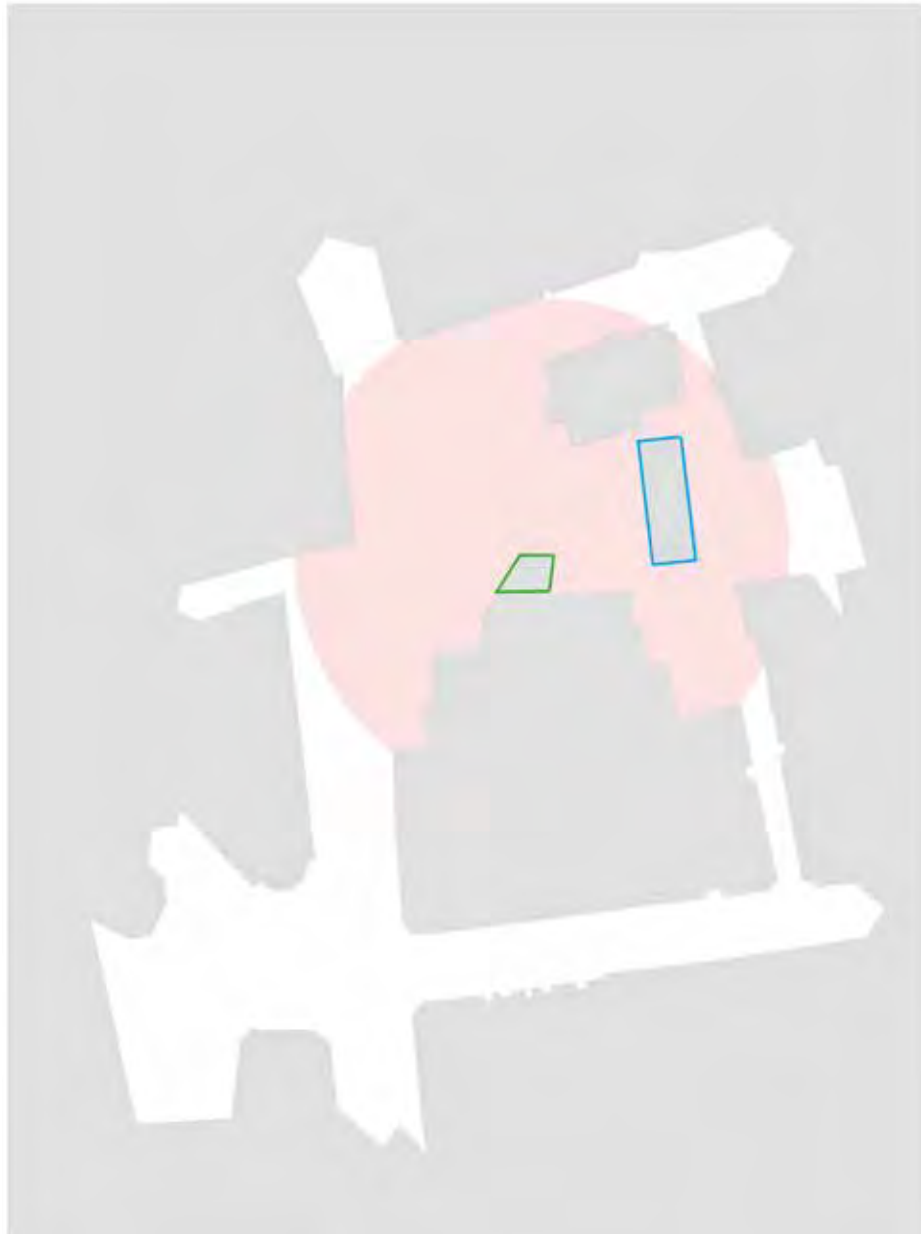


ENOMENOLOGY WITHIN THE SITE



— People walking    • People gathering    — Car moving    ■ Car parked

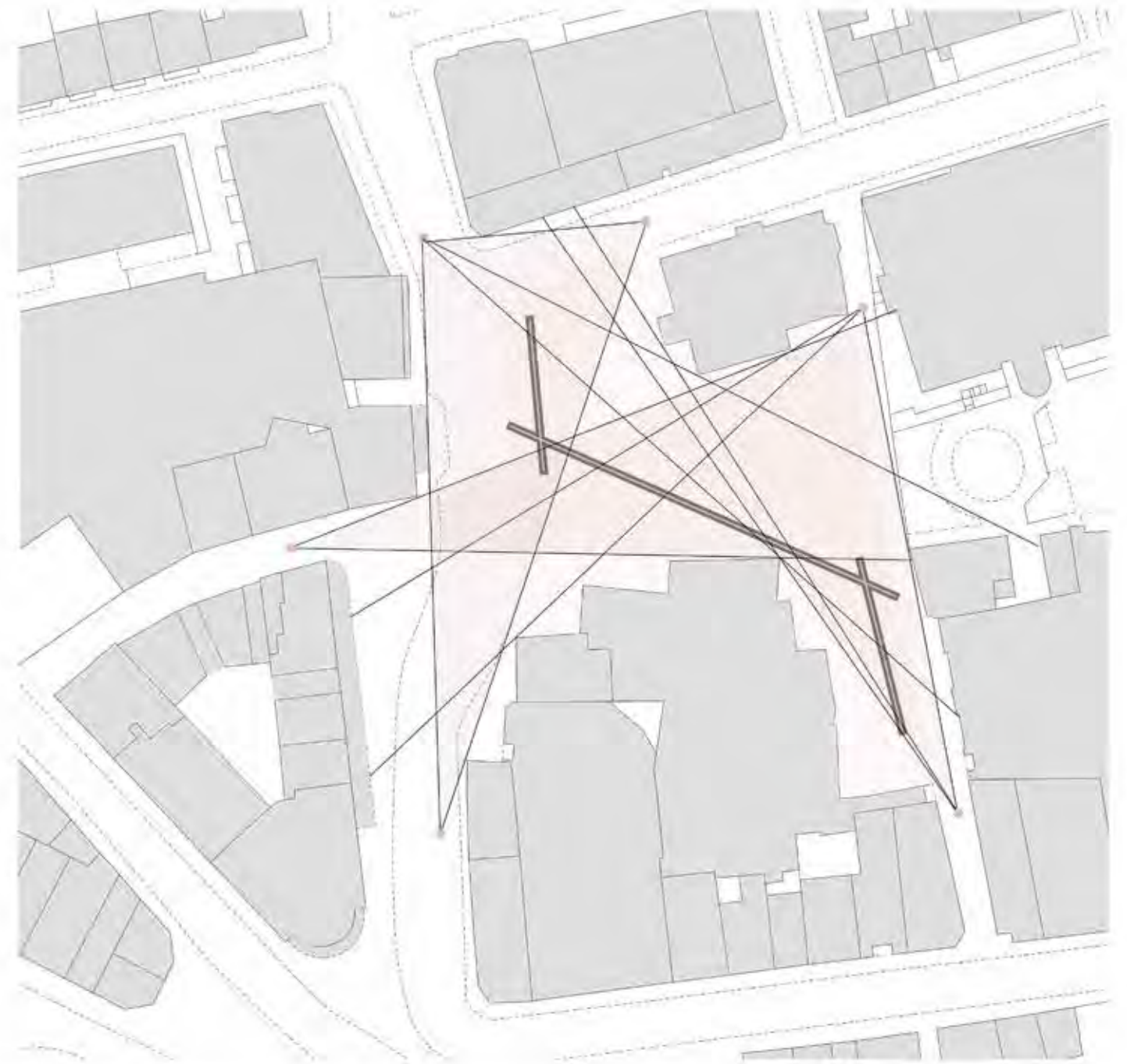




Regency garage

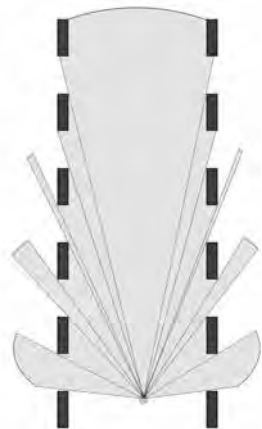
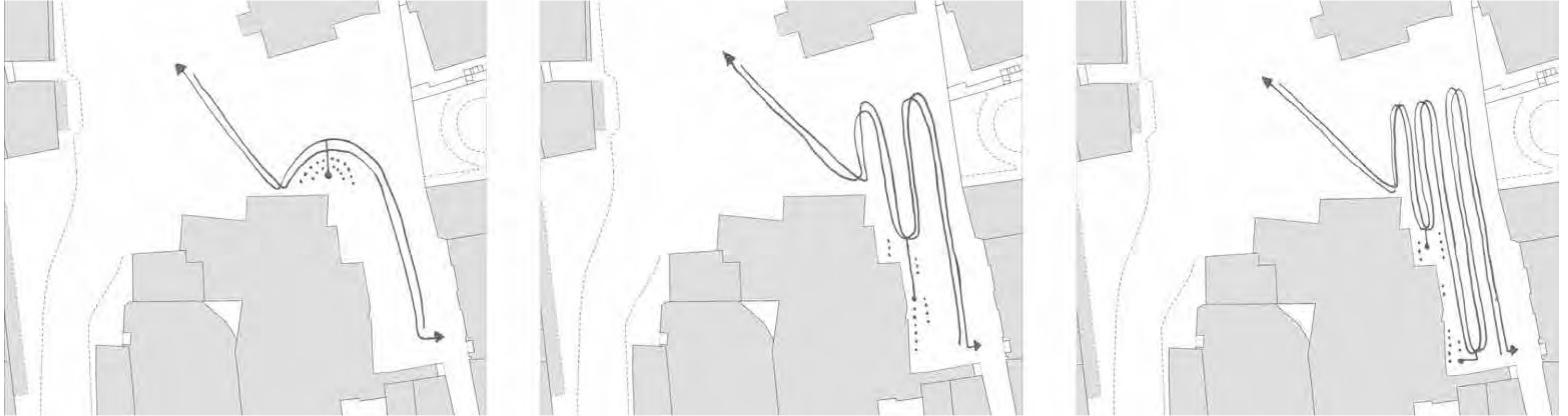


The clinic



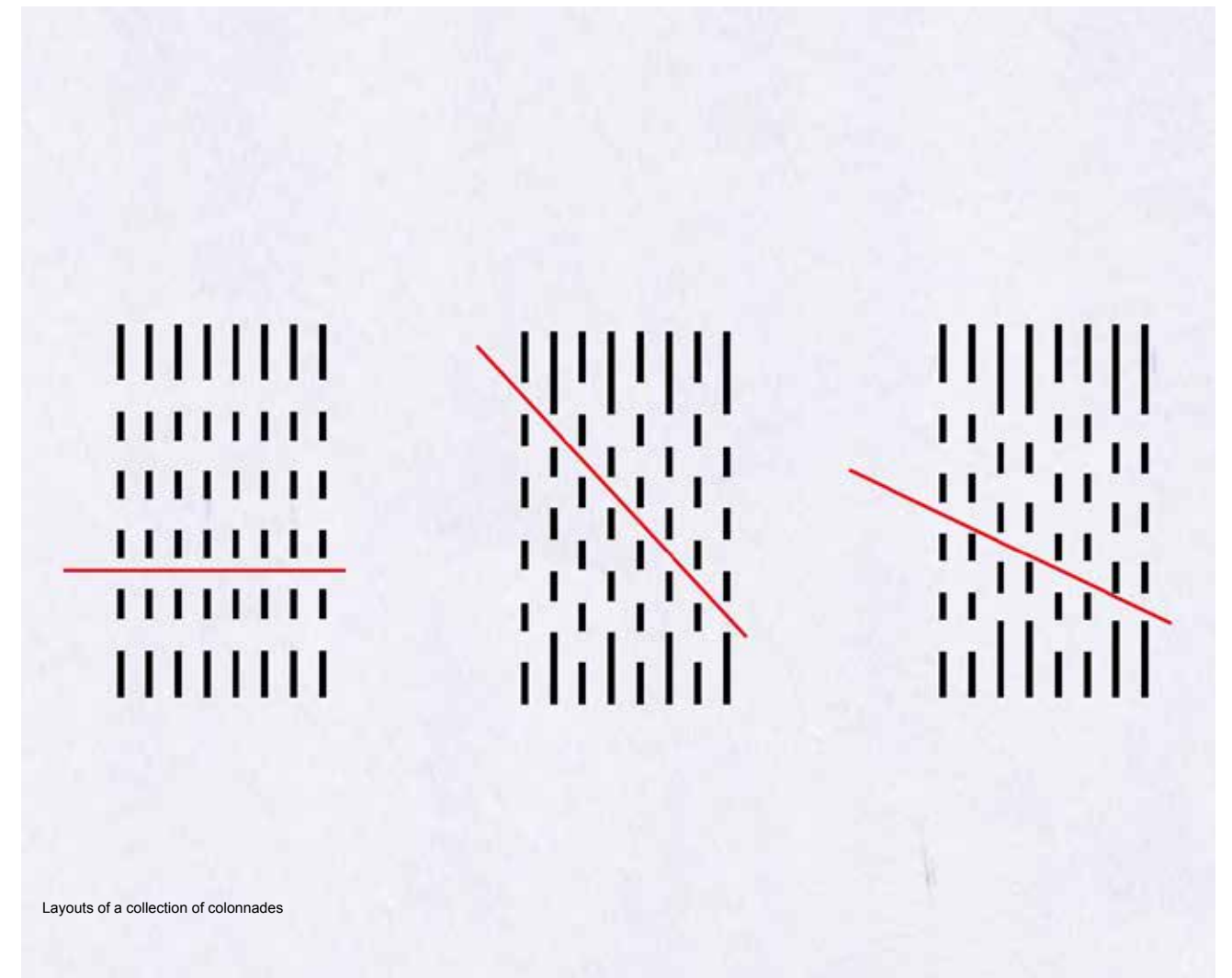
Removing The Clinic, the Regency Garage and the street widen the space and the sight range, and create a square that relate to the surrounding environment and inspire a new connection between Bridwell lane, which is the back street on the east side of the site and the north west corner of it at the tip of Saw close. This adjustment also reveal a garden located by Bridewell lane, and it connects it with Saw close.

## From Hemicycle to Colonnades



Phenomenological surrounding in a colonnade

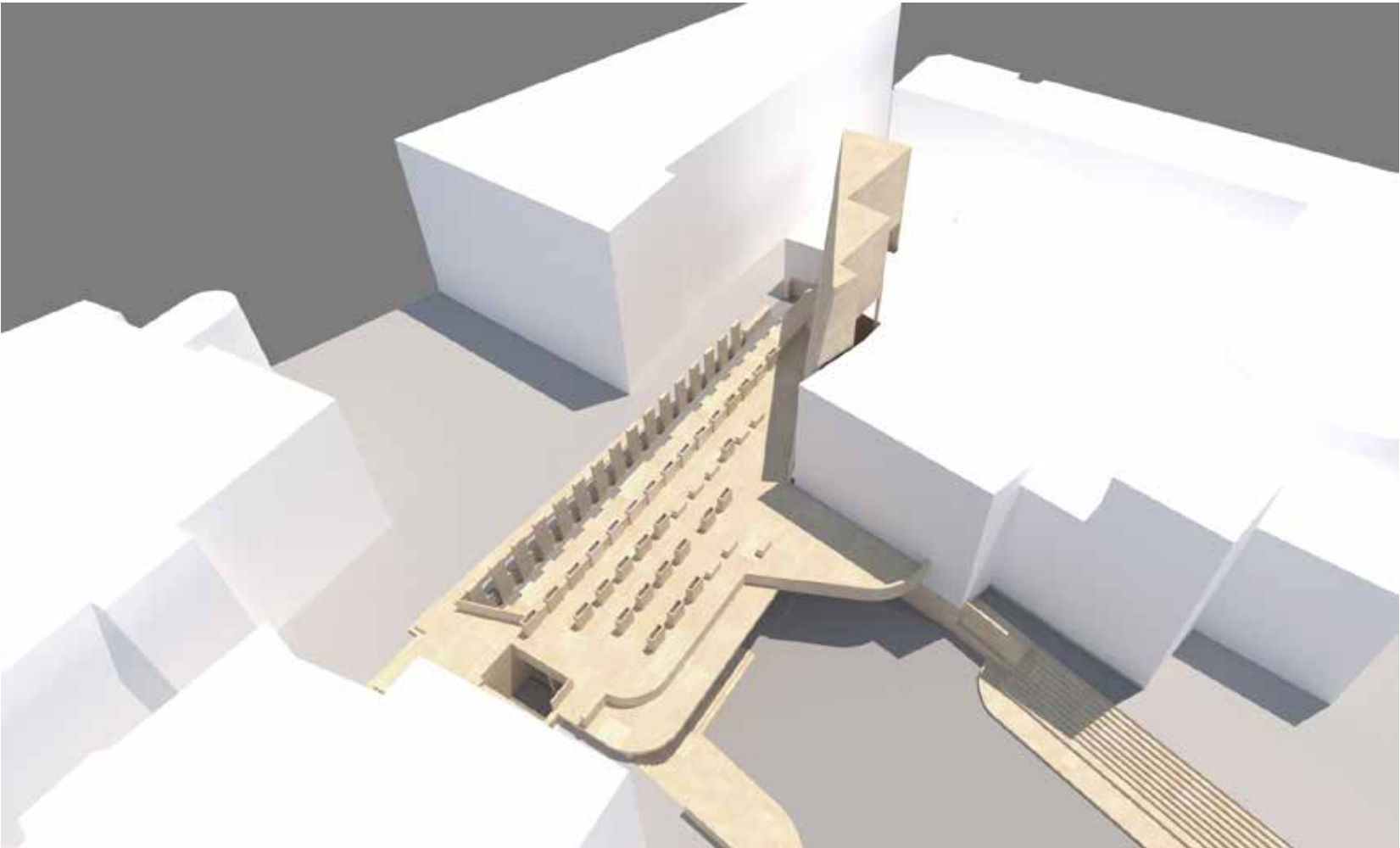
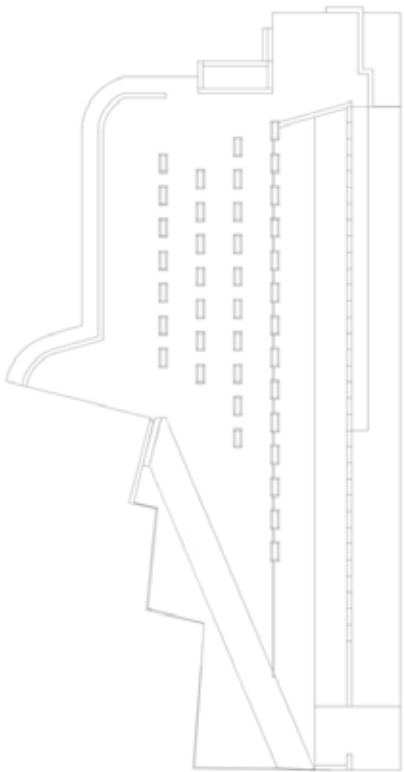
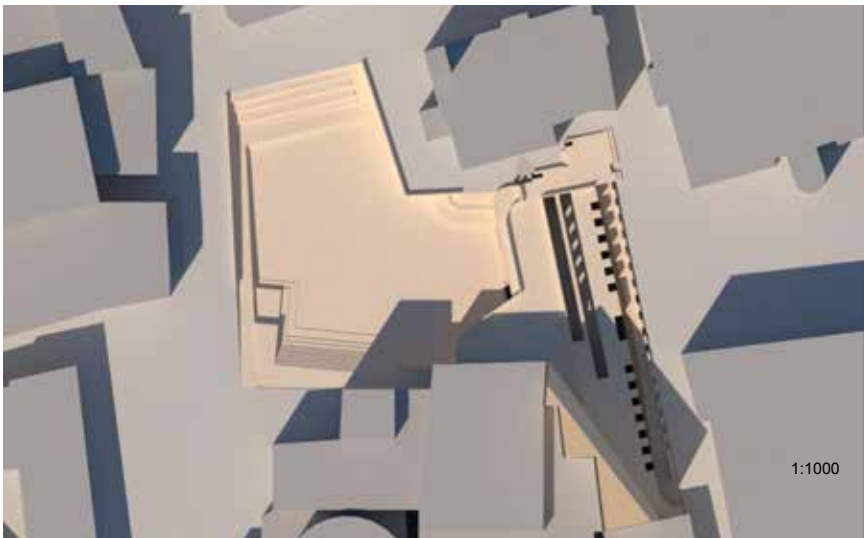
Above are two images of the colonnade at the Belvedere on the Pfingstberg palace in Germany and the hypostyle of Luxor temple in Egypt. The layout of this project is a collection of colonnades layed out in a way that resembles the hypostyle structure, creating paths for discussion, meditation and existing.

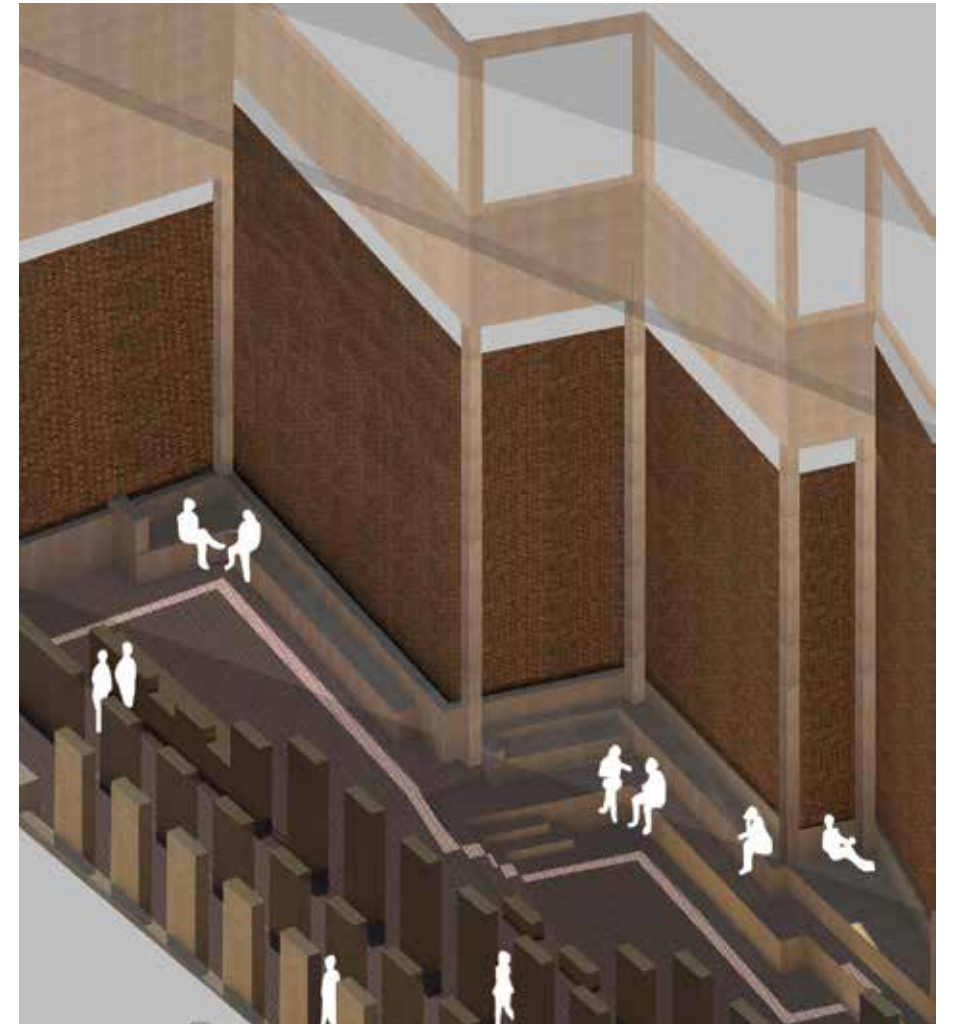
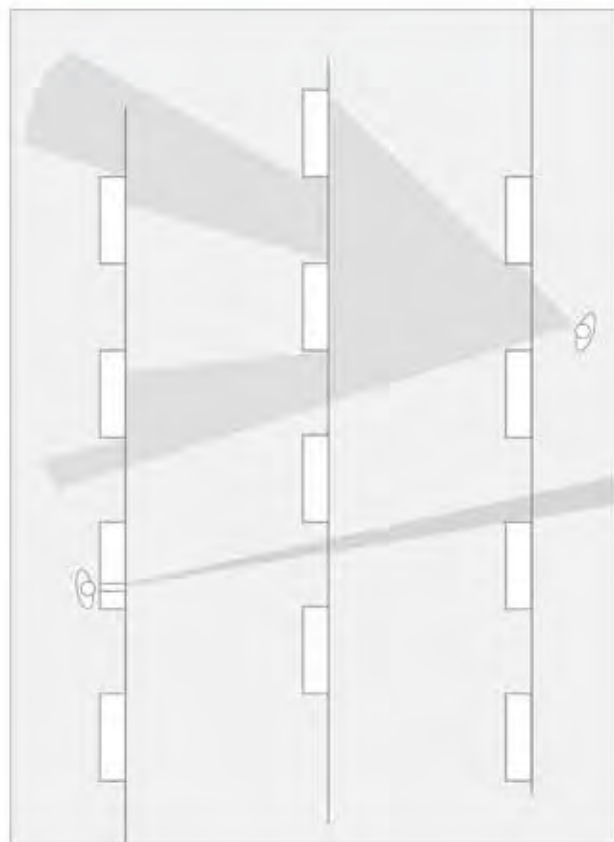
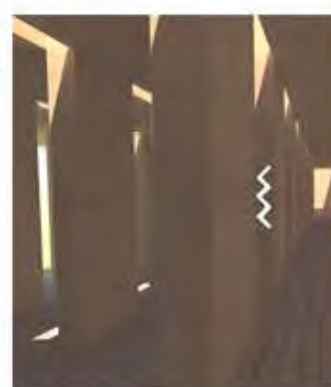
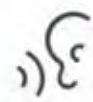
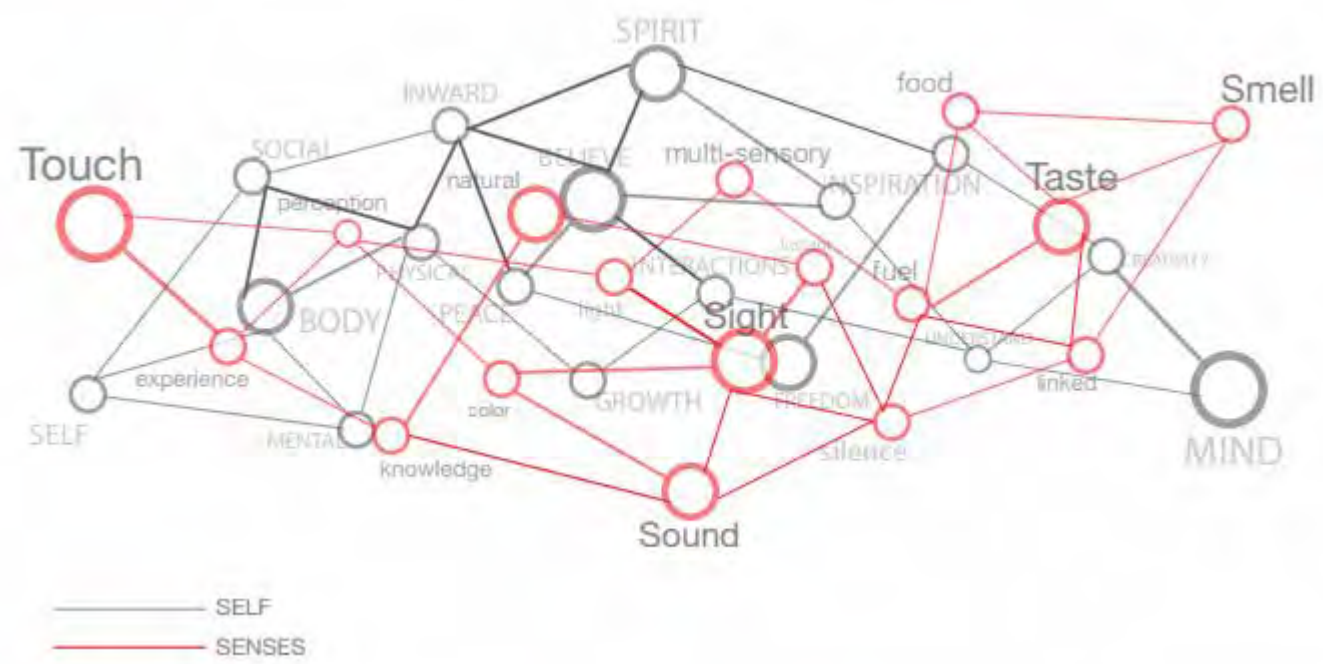


Layouts of a collection of colonnades

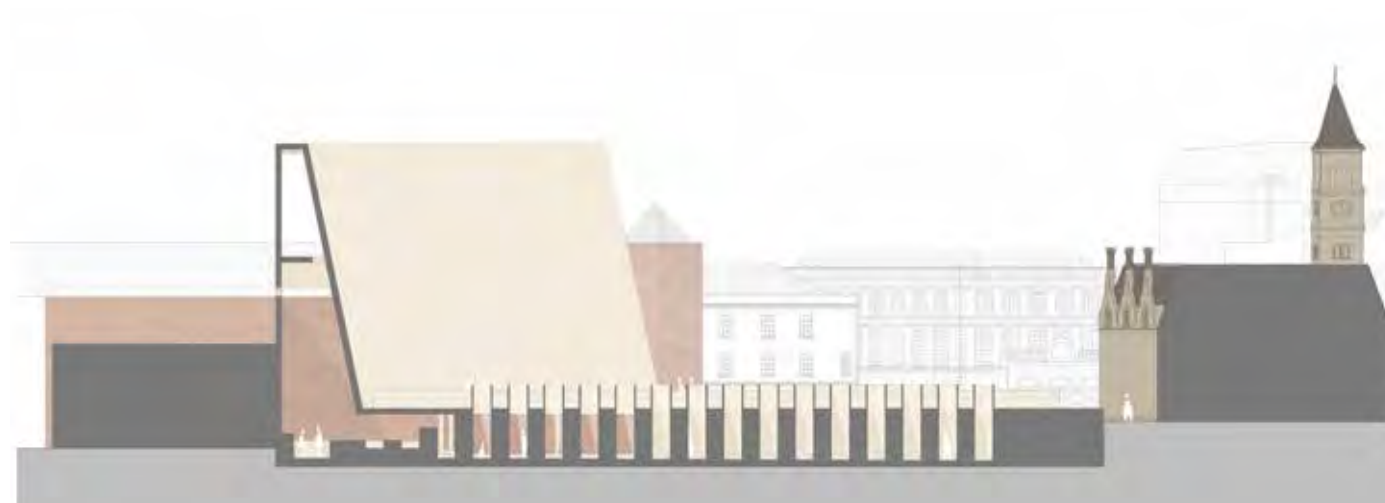
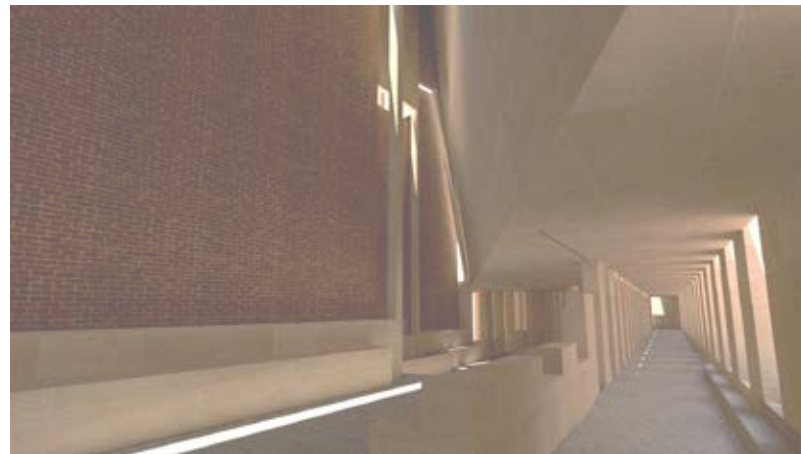
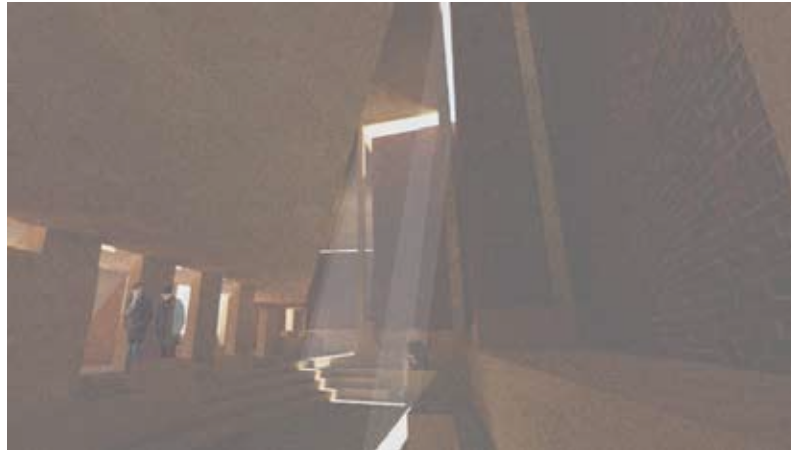


Layout Development





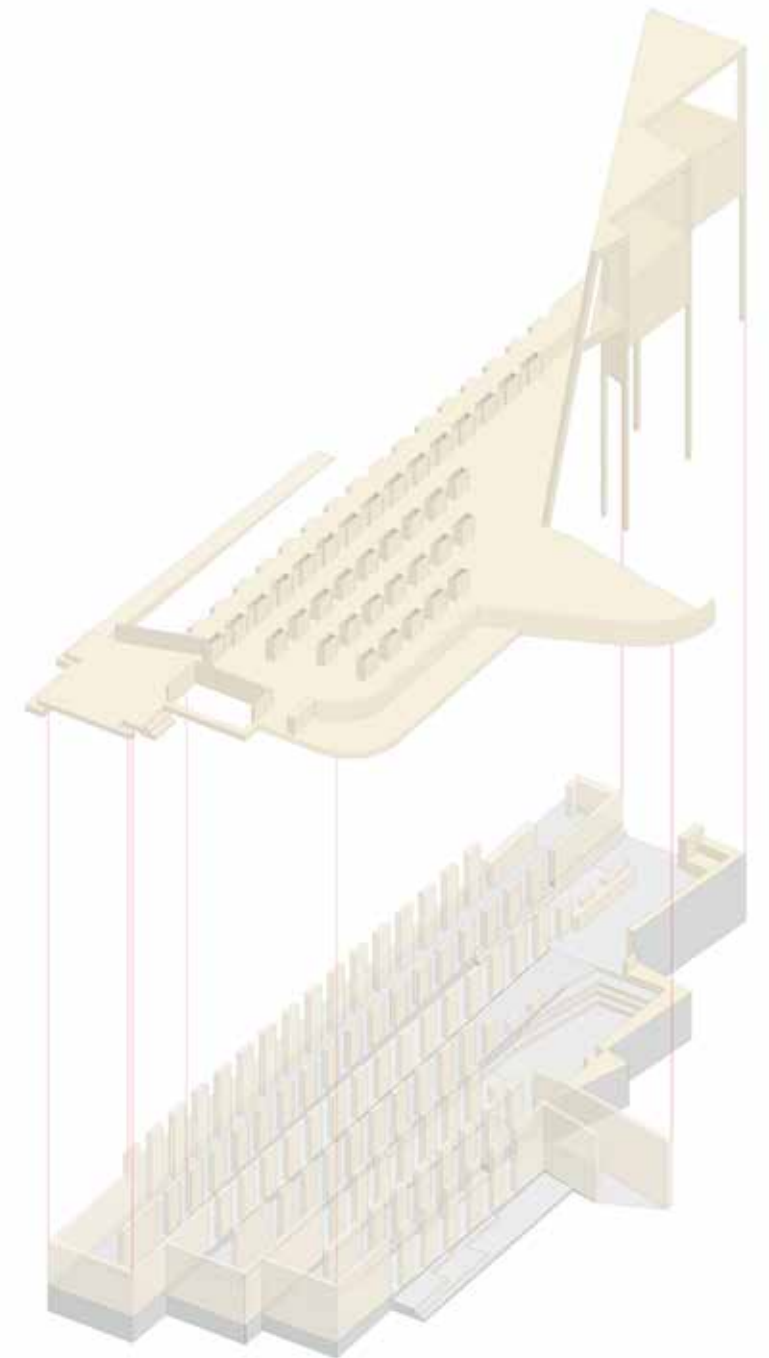


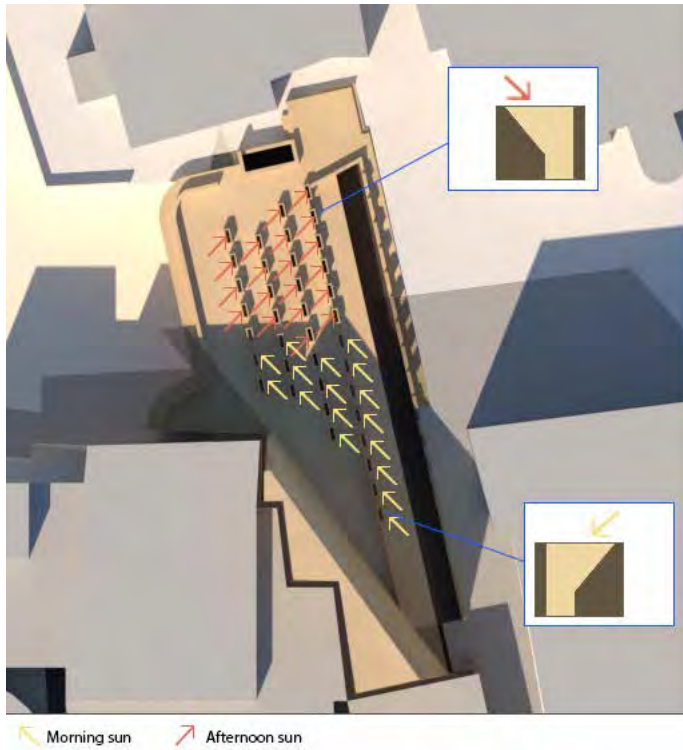


East section

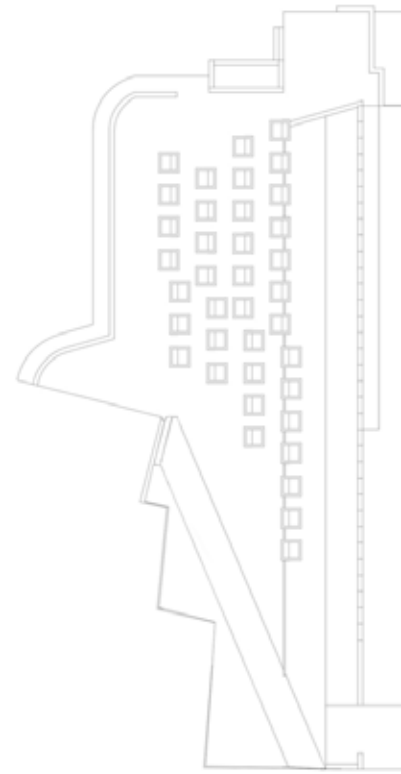
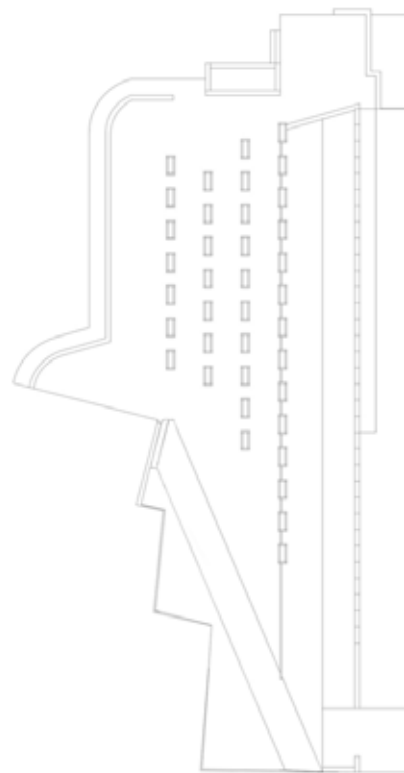
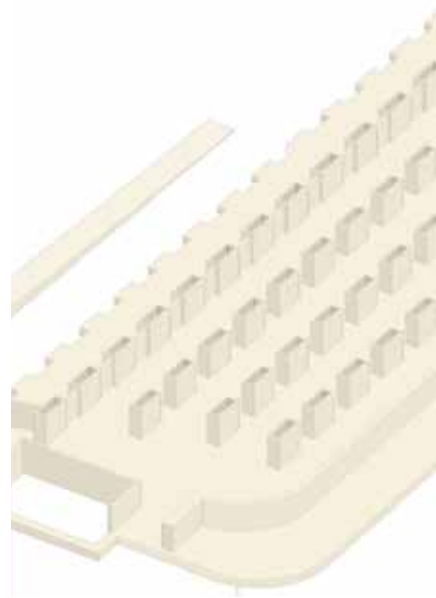
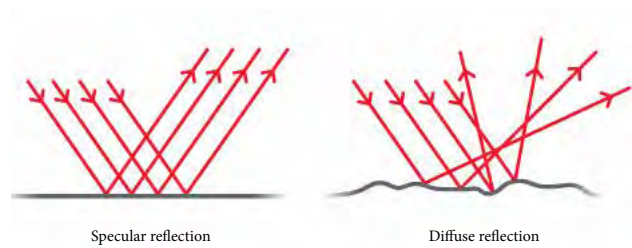


North section





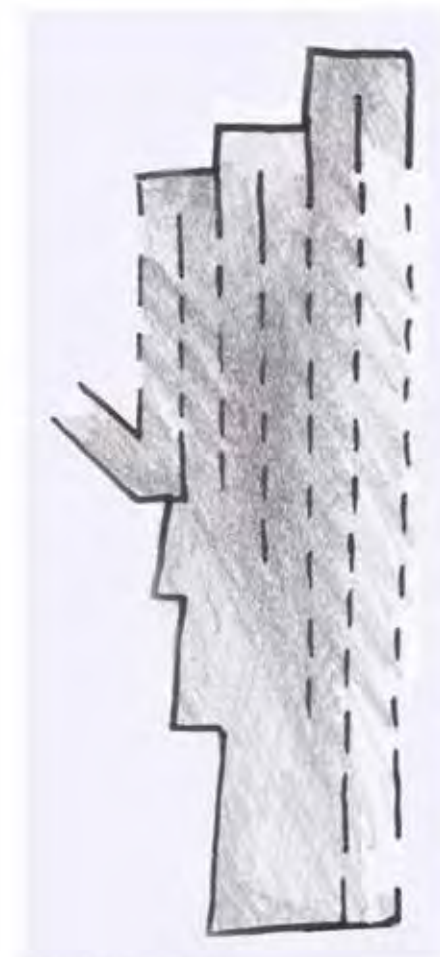
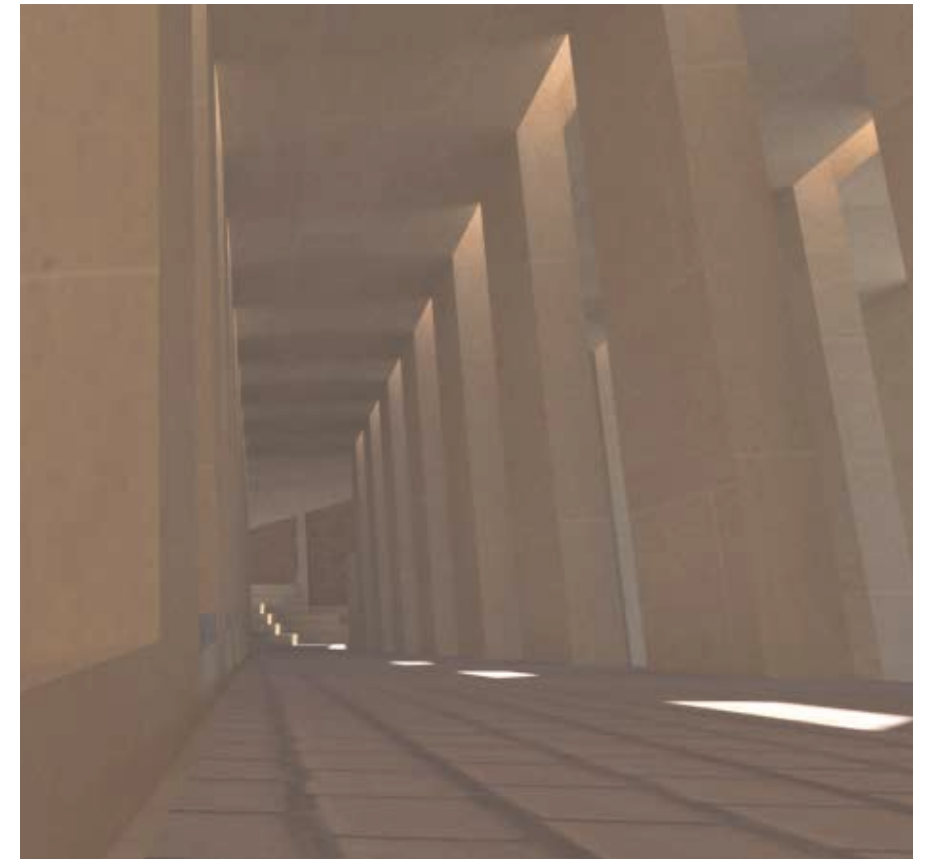
The surfaces of the chimneys from the inside are made very smooth to reflect more light inside the architecture



Roof plan before adjusting the chimneys

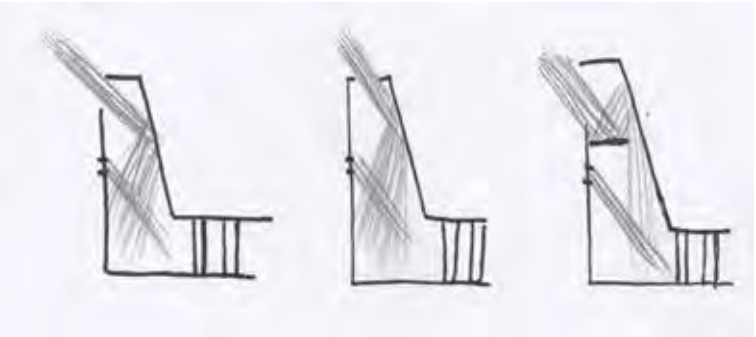
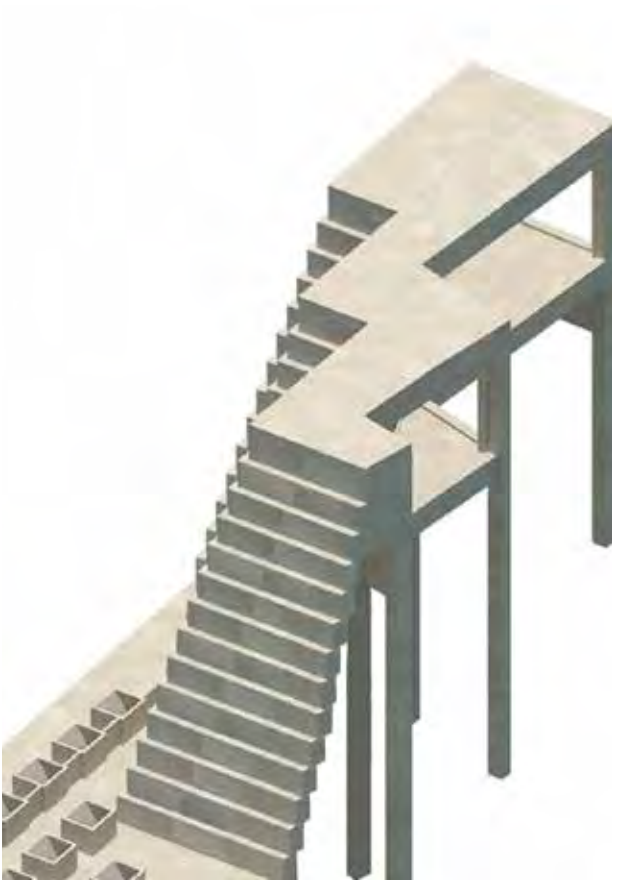
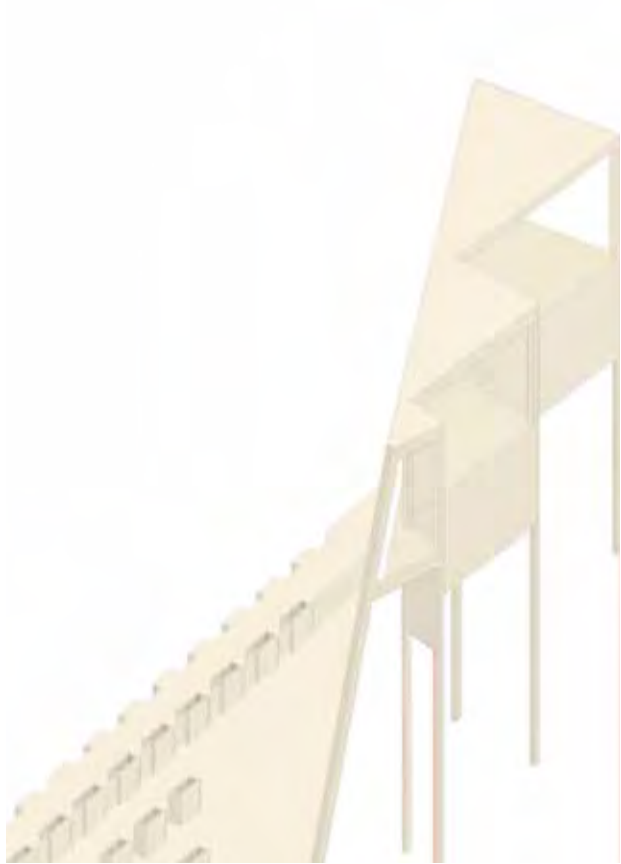
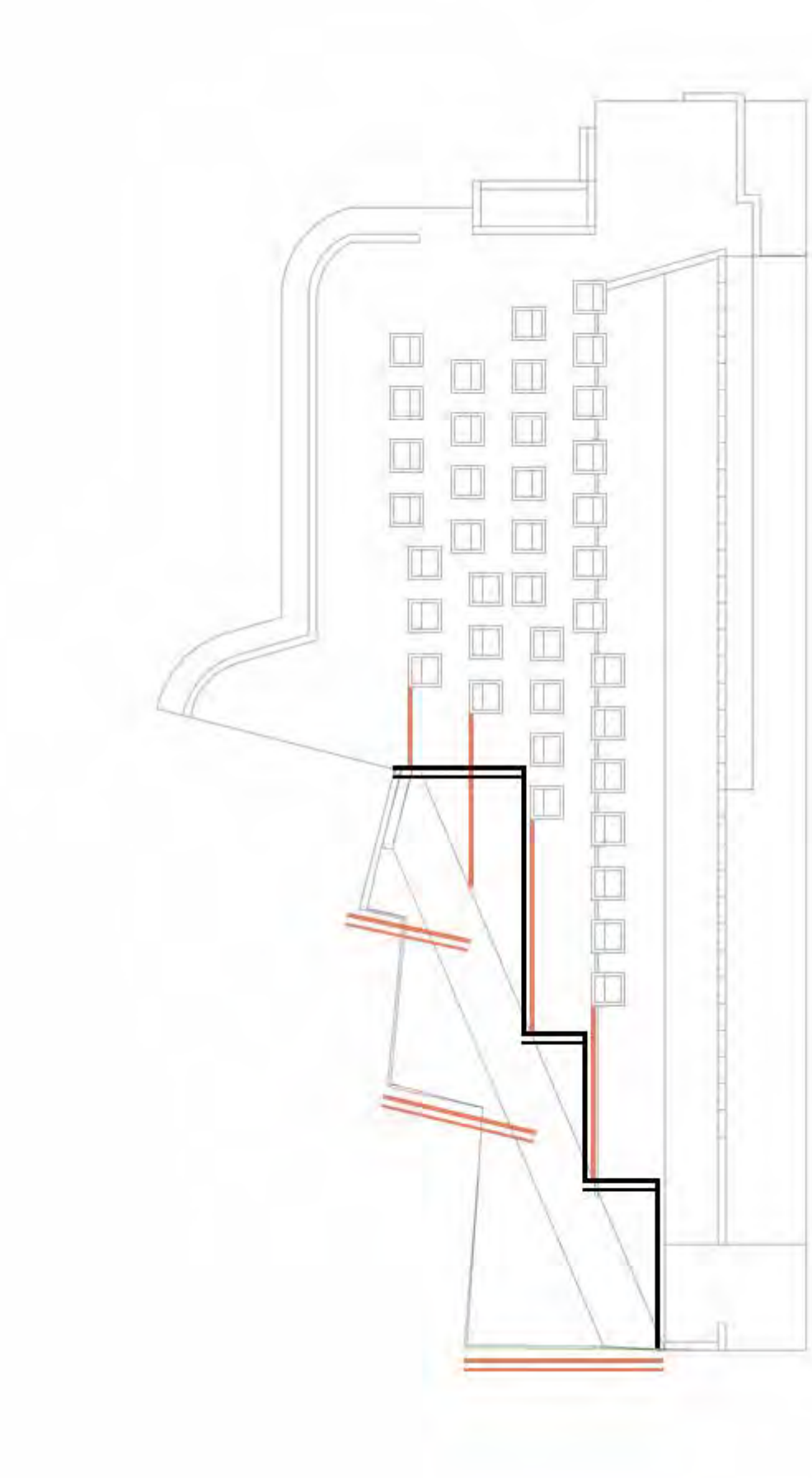
Roof plan after adjusting the chimneys

1:500



Light and shadow distribution







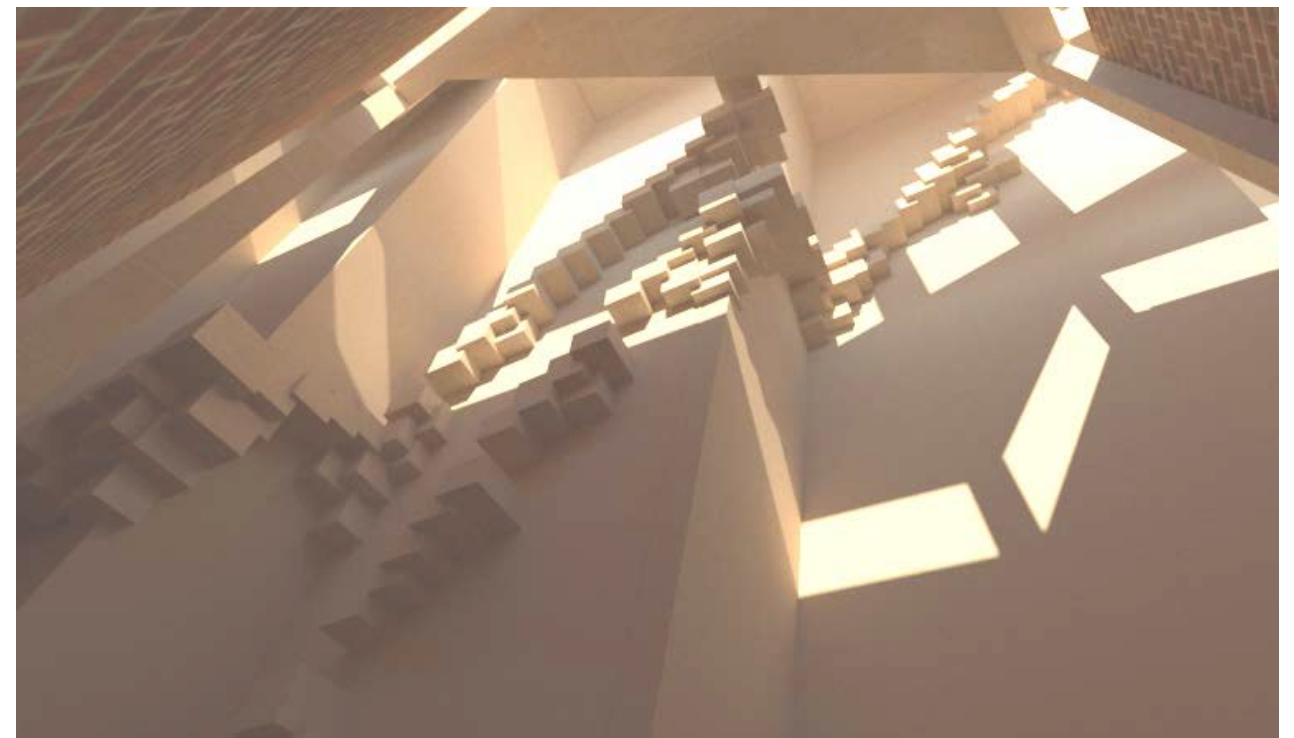
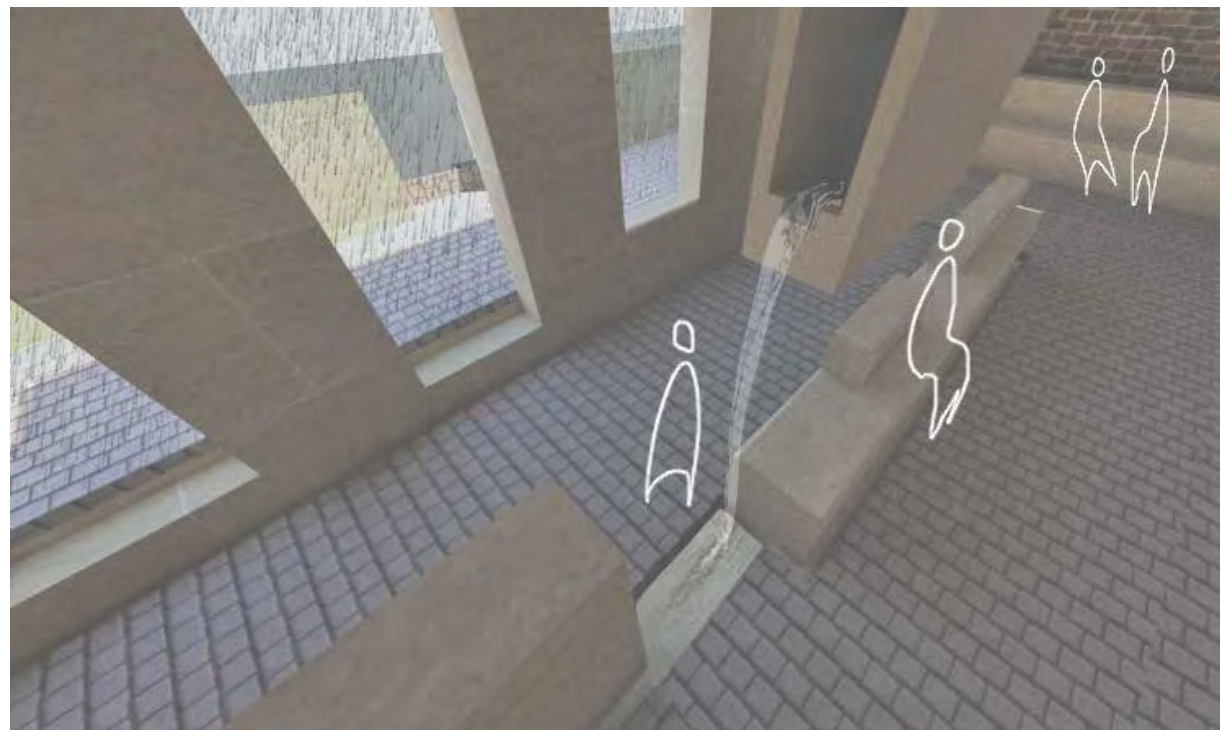
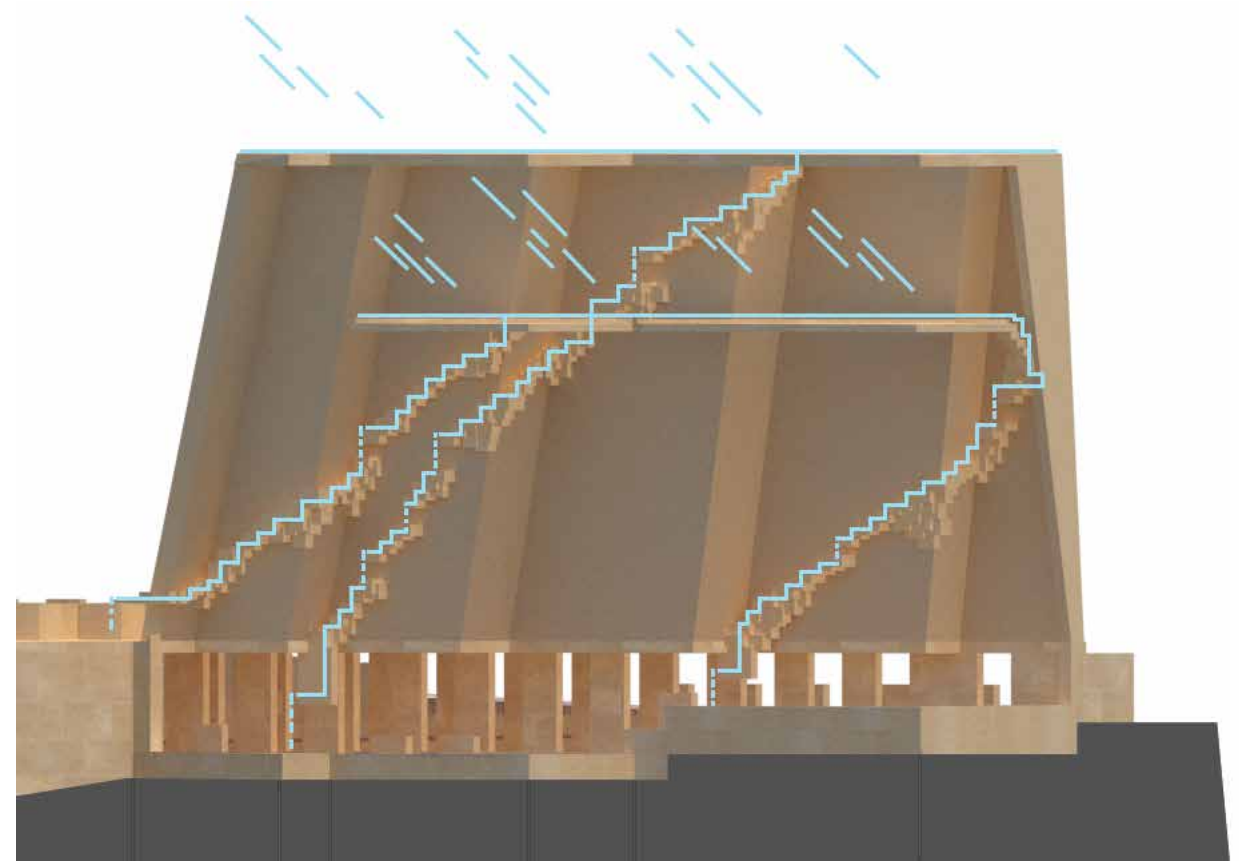
Solid stone tower wall





## TOWER ATTEMPT I

Water traveling down the tower

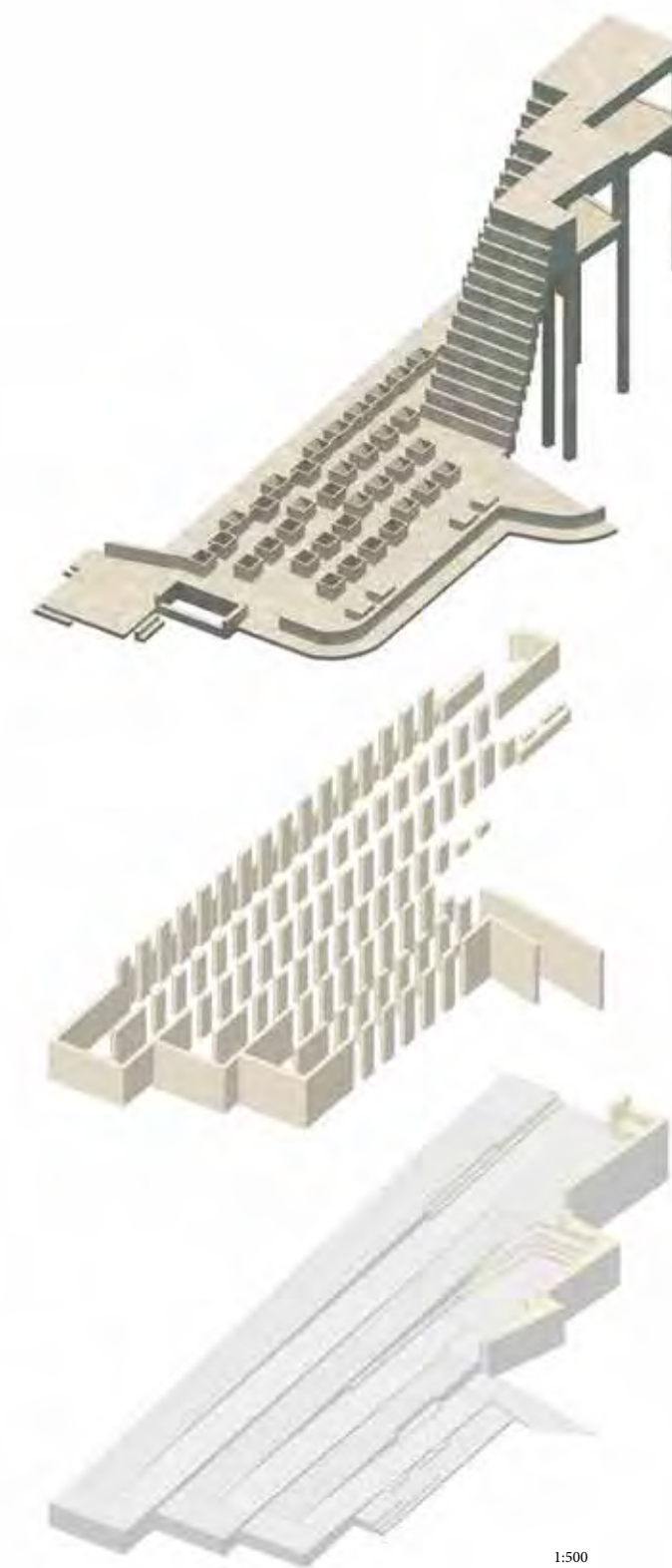




N



1:200

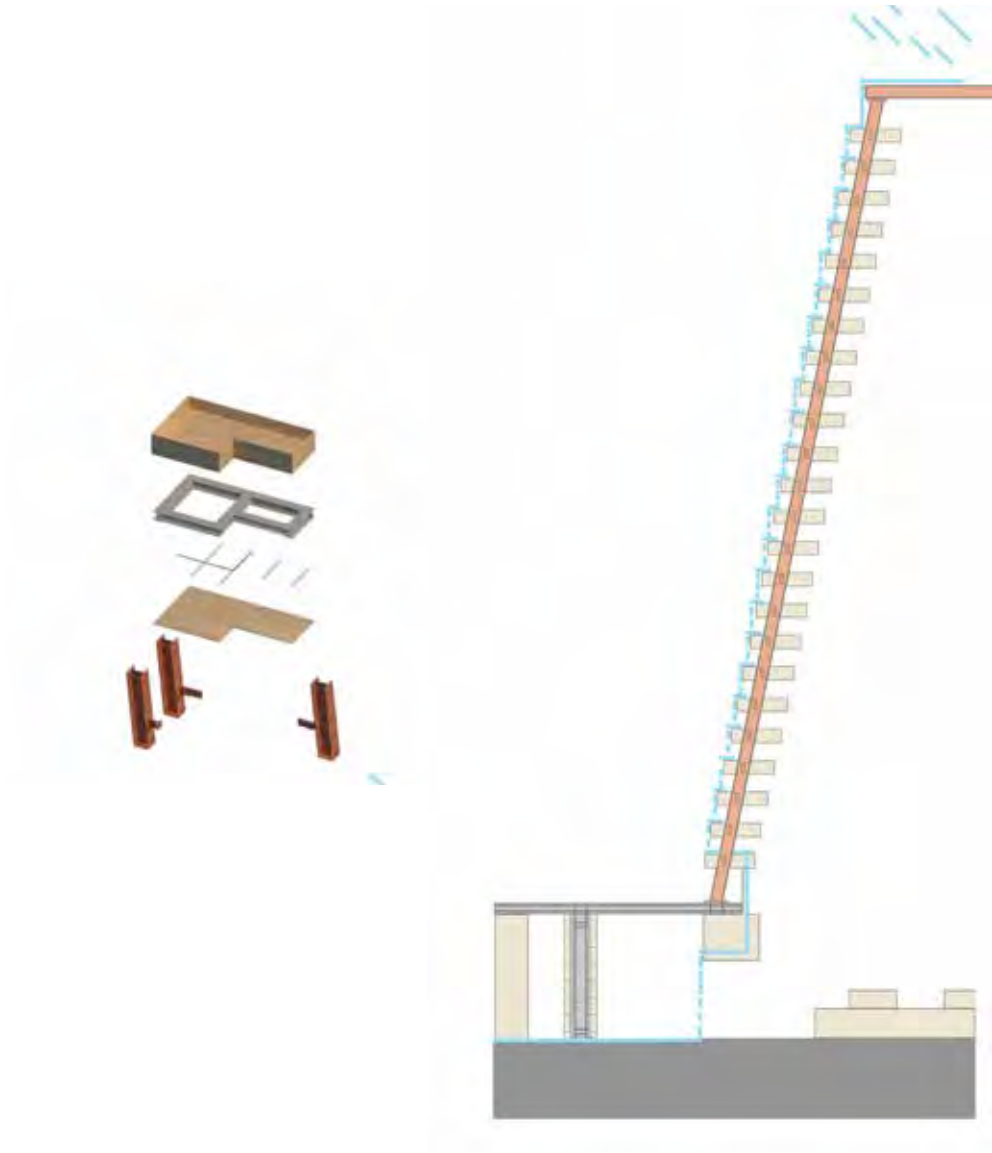
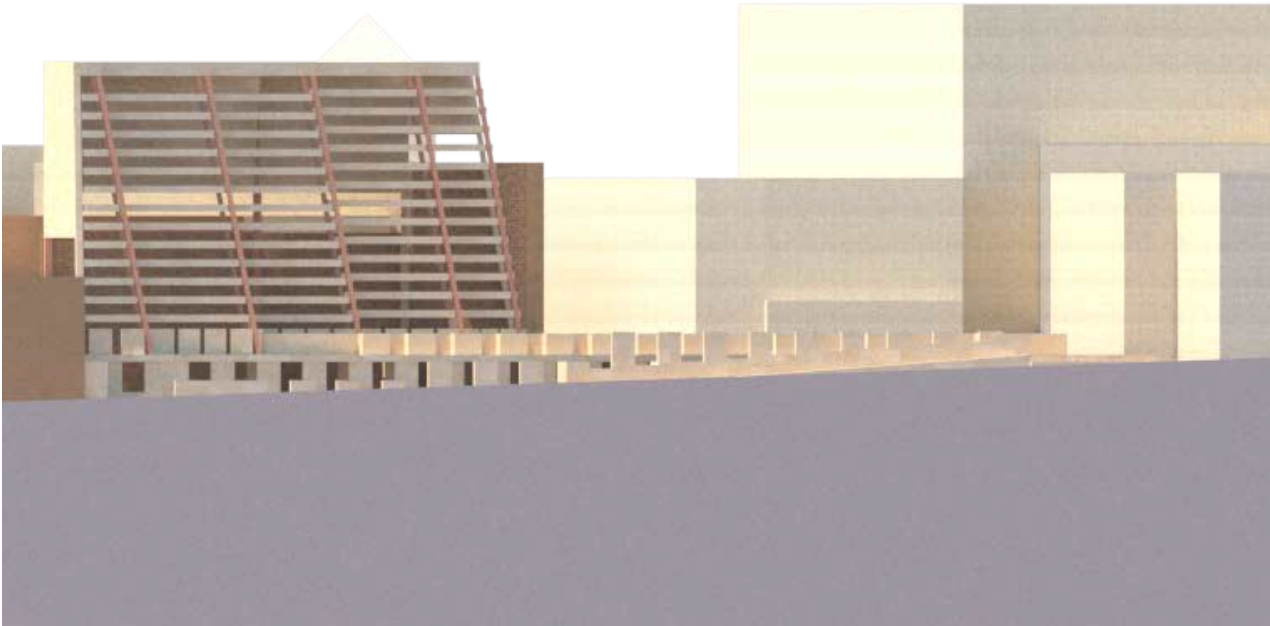


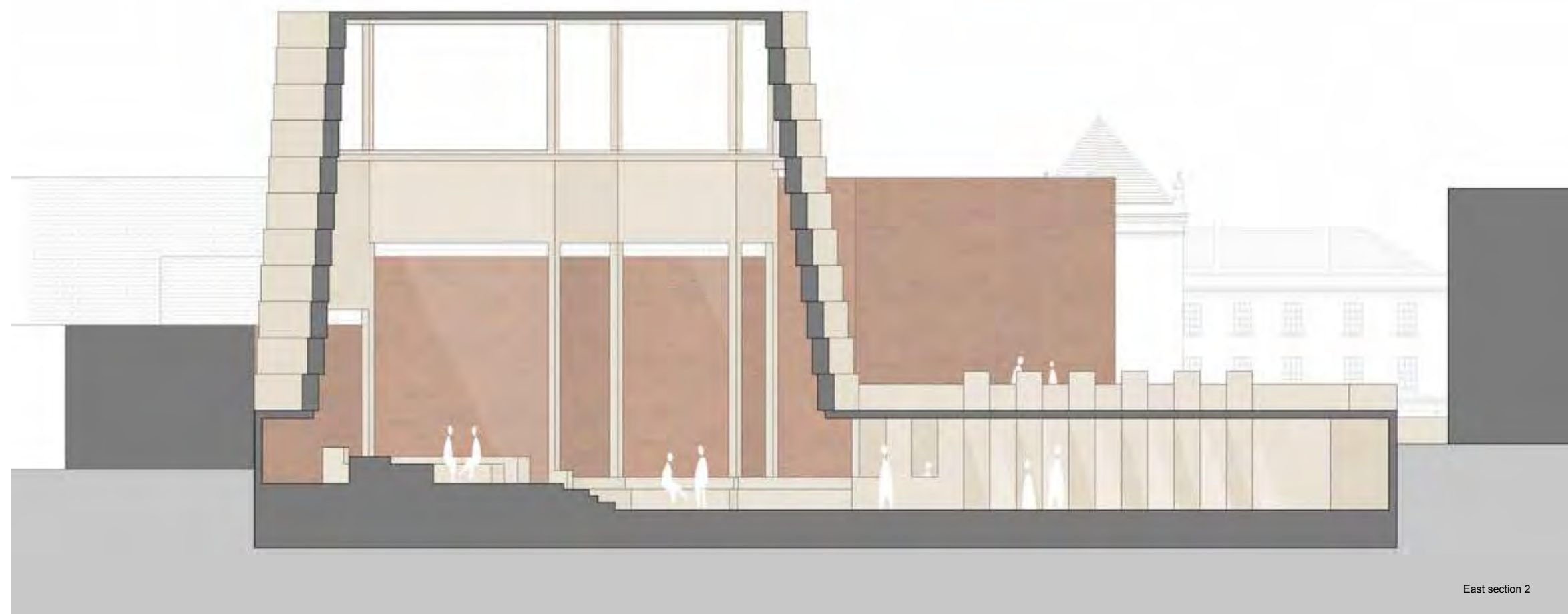
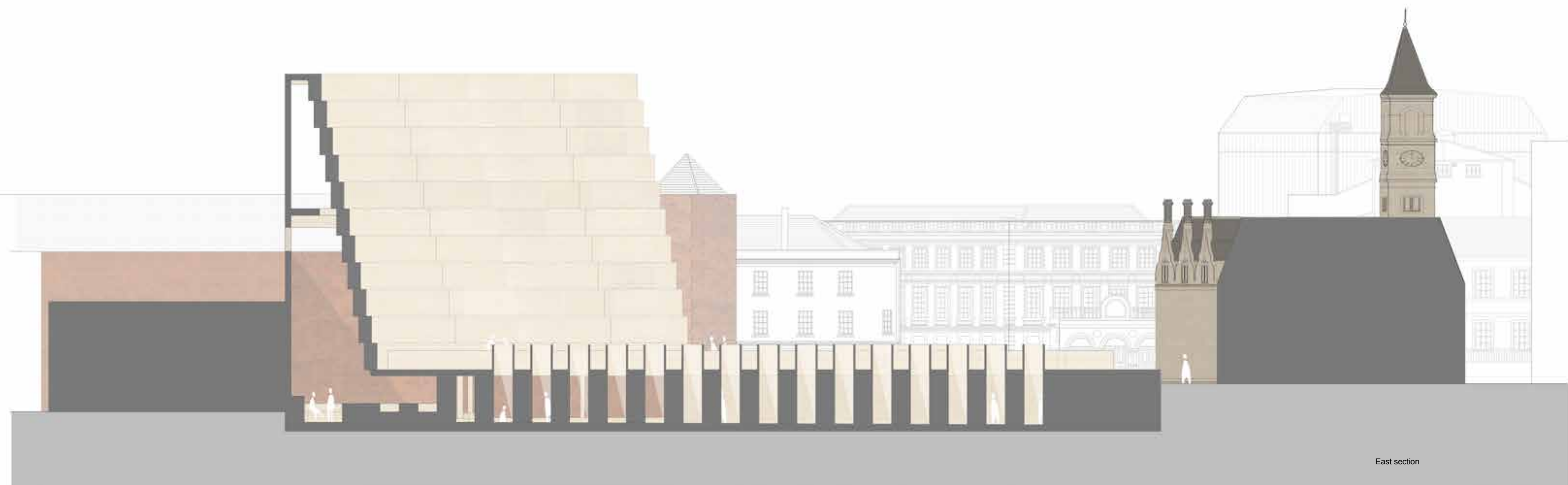
1:500



TOWER ATTEMPT II

Different light and water path  
Steal structure

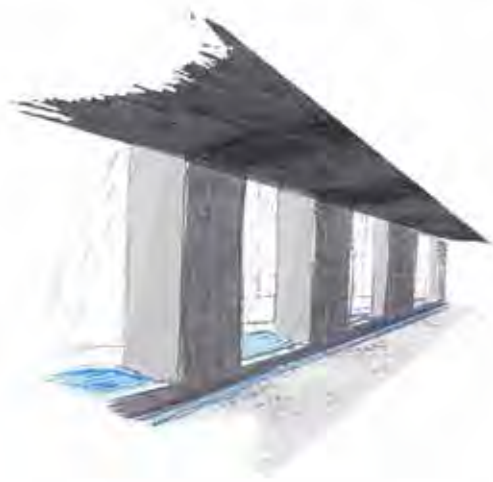








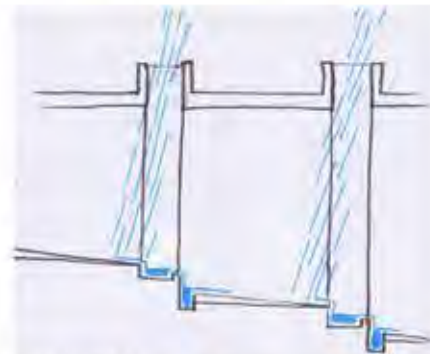




The design interacts with the natural environment by **inviting rain inside**. The rain gathers in small puddles located between the columns. Then when they fill up, **water travels down to channels** which run along the colonnades down to the garden in the square. The tower also gathers water then pour in alongside the long wall down to a **hanging channel** that moves the water down to the mentioned channels. The water running through the building also address the **sense of hearing** by its movement around the structure.



The channels surface has taps so the water would create more sound

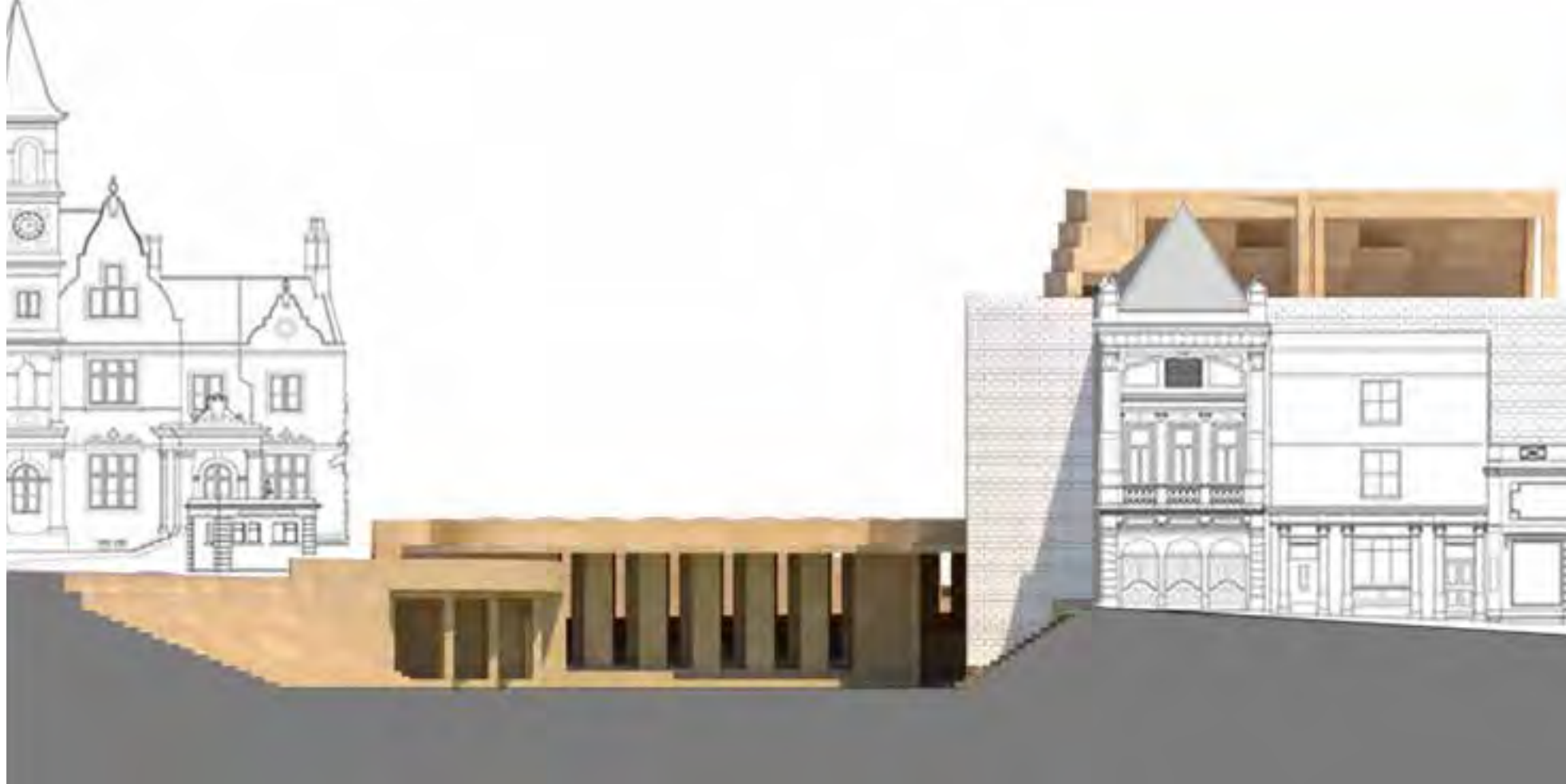


The puddles and the channels

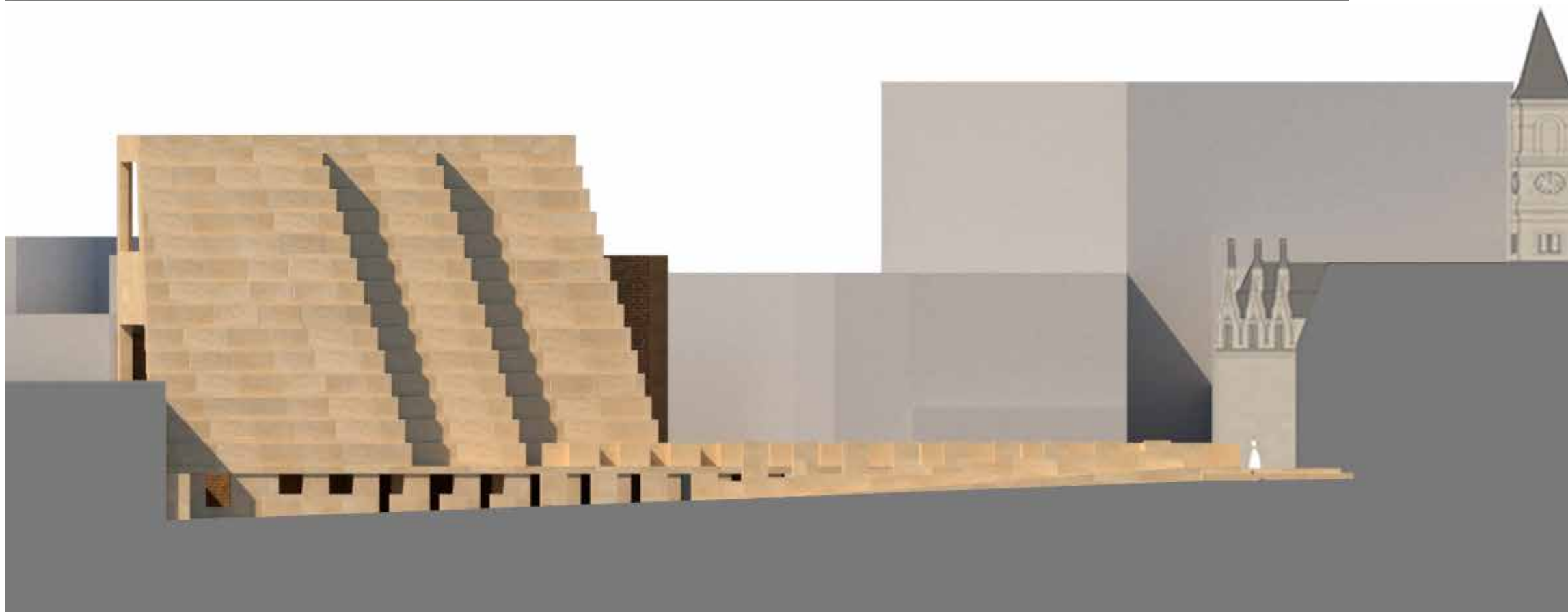


The hanging water fall of the tower





West elevation



East elevation



Book shop

