

Alastair Battson

Portfolio

Camelot Industrial Artists London, England



These models were made for a UK distributors of children's toys and bath goods. They are all sculpted from many different materials dependant on their characteristics. Mostly the characters were made from wax, Renshape or Chemiwood everything else. The sculpt was then moulded in silicon and cast in resin. The cast resin was then cleaned up and finished in custom mixed lacquer paints.

Left:- Tweenies boot alarm clock

Below:- Bob the Builder clock



Left:- Noddy bubble bath

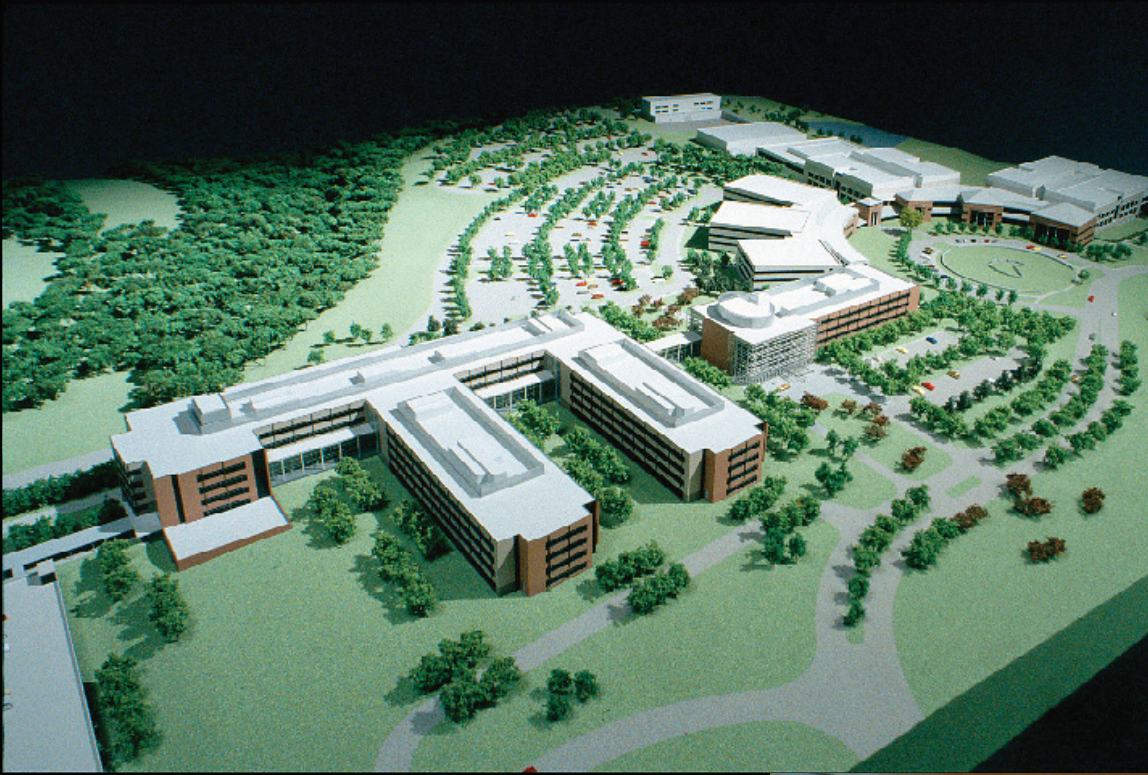


Benjamin & Marian Schuster Performing Arts Center
Dayton, OH, USA
Cesar Pelli and Associates
1/8th Scale
Laser cut acrylics, custom painting

Childrens Hospital of Philadelphia addition
Philadelphia, PA, USA
Kohn Pedersen Fox Associates
1/8th Scale
Laser cut acrylics, custom painting,
fiber optic lighting



Renée and Henry Segerstrom Concert Hall
Orange County Performing Arts Center
Costa Mesa, CA, USA
Cesar Pelli and Associates
1/4th Scale
Laser cut acrylics, custom painting.

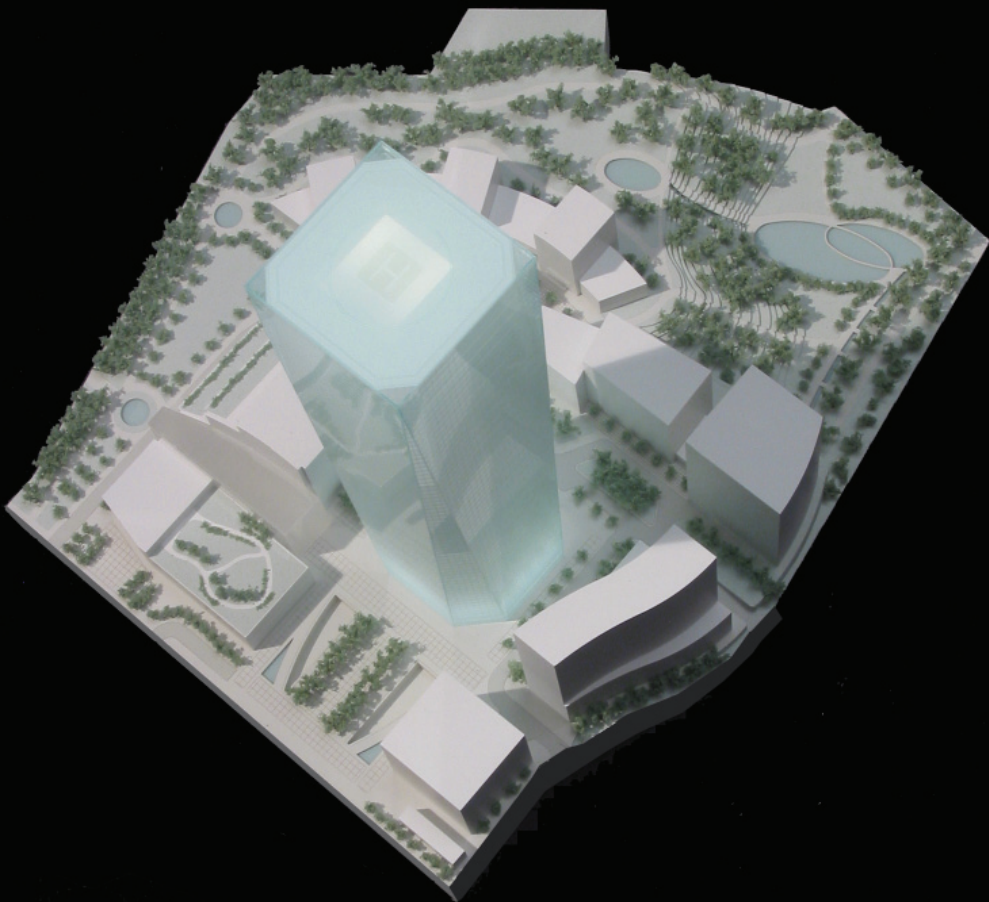


Wyeth Pharmaceuticals- Headquarters Addition
Collegeville, PA, USA
Kling Lindquist
1/16th Scale
Laser cut acrylics, custom painting, foam base

Morgan Stanley- New York Headquarters Lobby
Kohn Pedersen Fox Associates
1/2 Scale
Laser cut acrylics, custom painting,
fiber optic lighting.

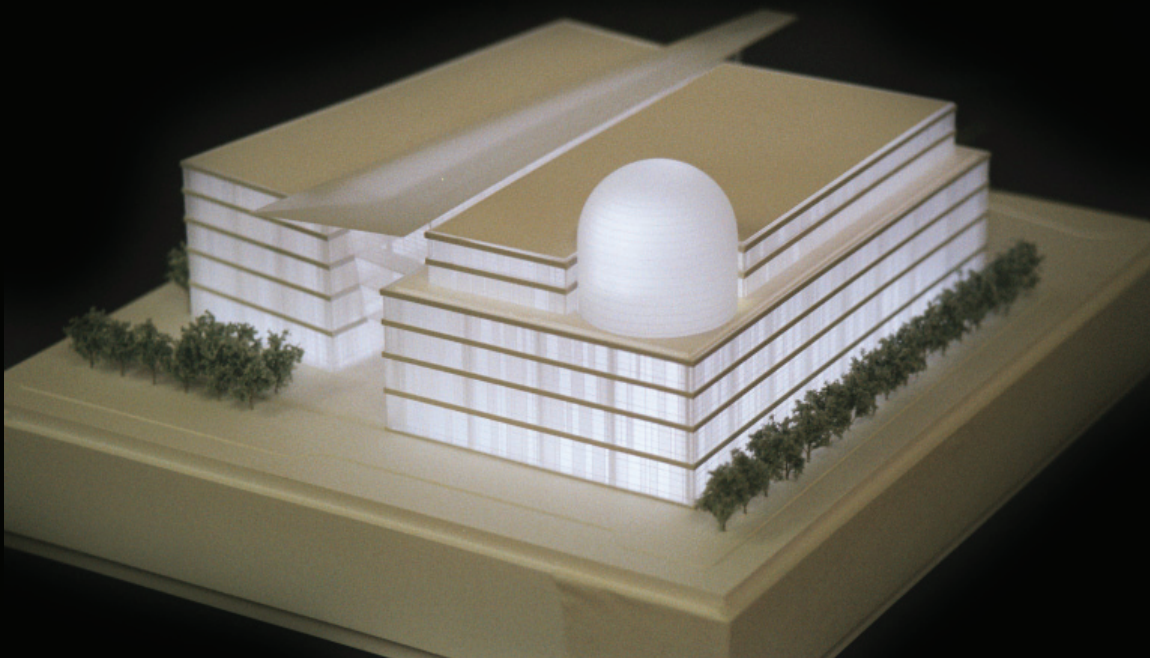


Goldman Sachs Tower- louver test
Jersey City, NJ, USA
Cesar Pelli and Associates
3"=1ft Scale
Laser cut acrylics, SLA frames, custom painting.



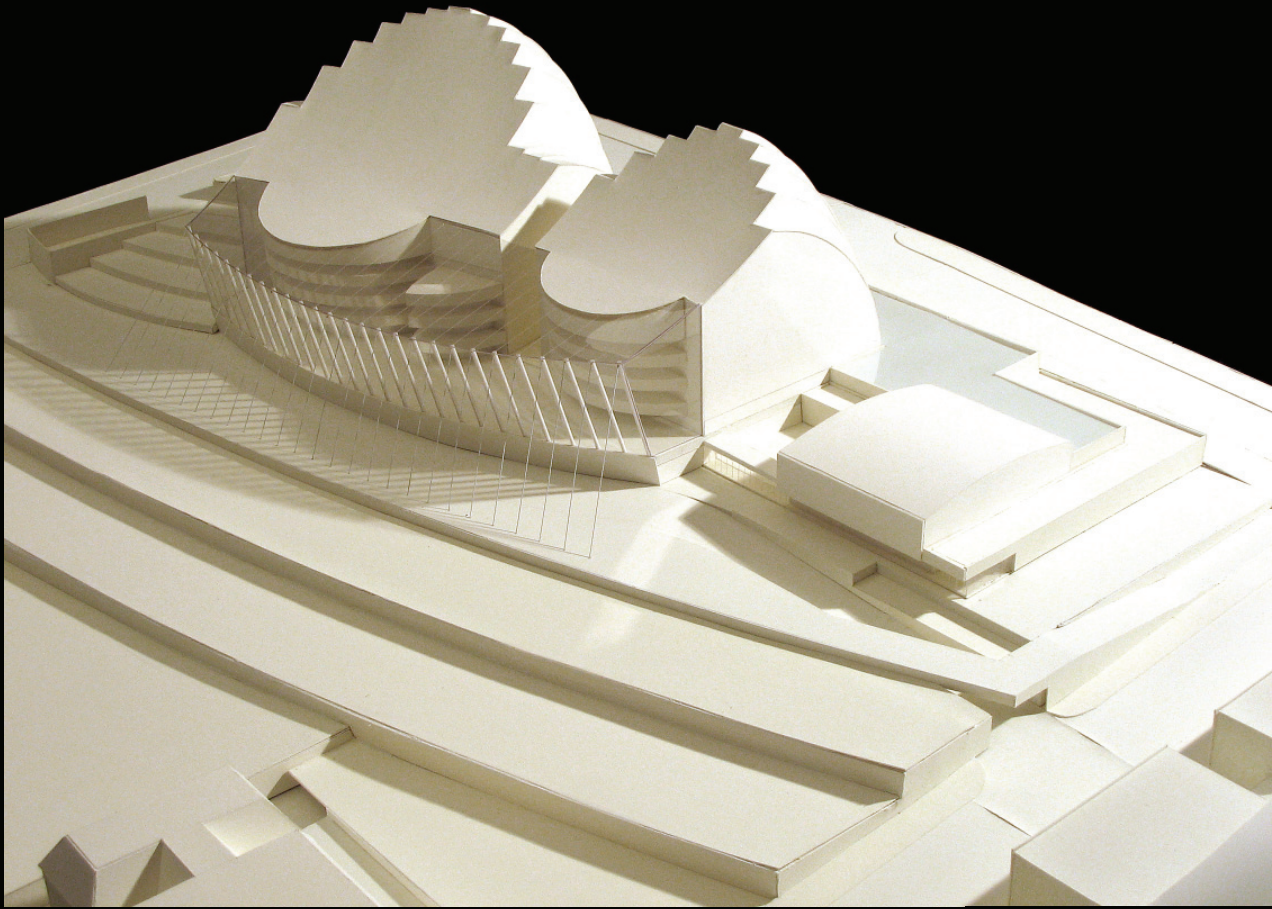
Left:-
Roppongi Hills, Tokyo, Japan
Cesar Pelli and Associates
New Haven, CT
1-1000 Scale
Acrylic, Renshape, custom paint, pinhead flock trees

Below:- Fin design study models
Below Left: Bloomberg Tower, New York City
Below Right: International Finance Centre, Hong Kong
Cesar Pelli and Associates
New Haven, CT
1-10 Scale
Foamcore, card, acrylic, basswood, custom painting,



Left:-
Minneapolis Central Library
Cesar Pelli and Associates
New Haven, CT
1-1000 Scale
Acrylic, Renshape, custom paint, pinhead flock trees

Moshe Safdie and Associates Boston, MA



Development model
Kauffman Center for the Performing Arts
Kansas City, MO, USA
1' = 1/8th" scale
White foam and strathmore.

Theater interior development model
Kauffman Center for the Performing Arts
Kansas City, MO, USA
1' = 1/4" scale
White foam and strathmore.



Theater interior development model
Kauffman Center for the Performing Arts
Kansas City, MO, USA
1' = 1/4" scale
White foam and strathmore.



Moshe Safdie and Associates Boston, MA



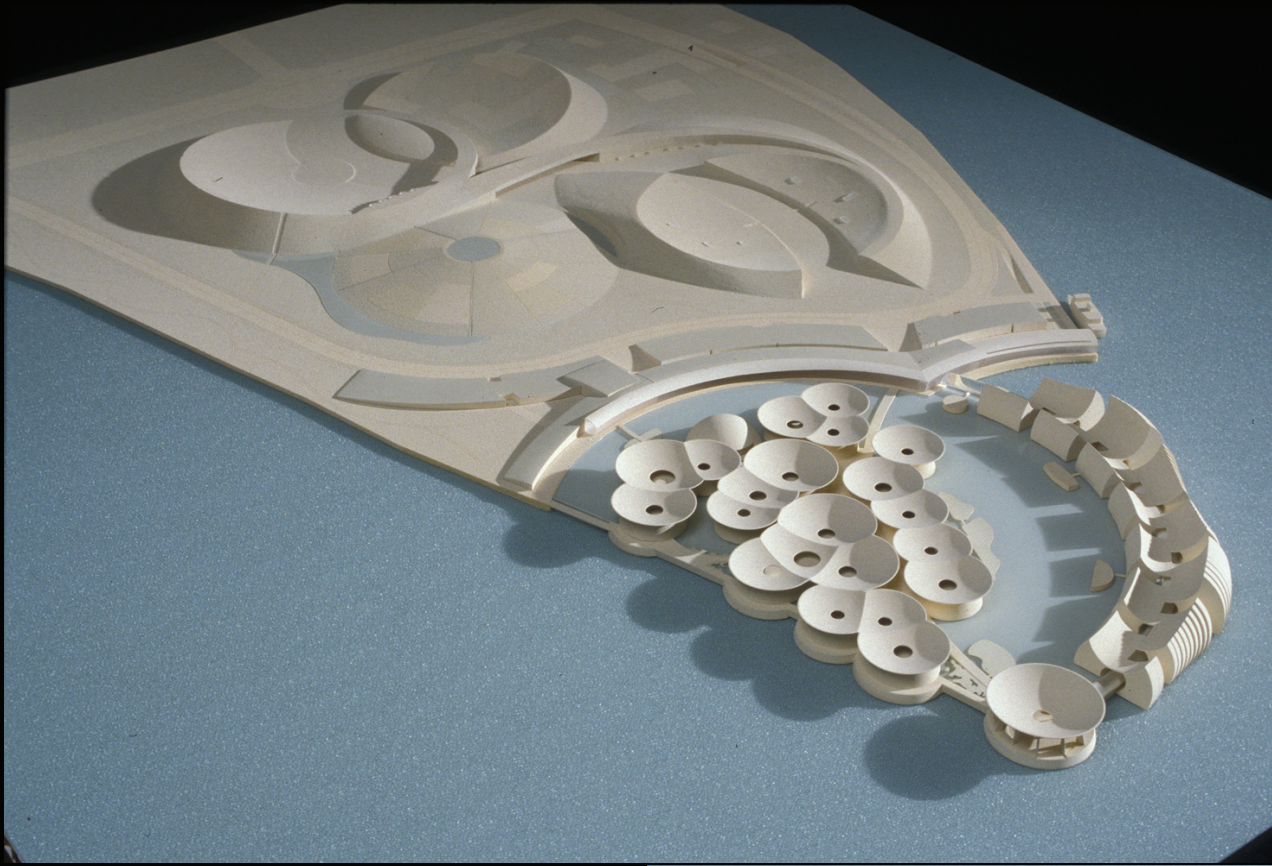
Final presentation model
Kauffman Center for the Performing Arts
Kansas City, MO, USA
1' = 1/8th" scale
Styrene, white foam and strathmore base.
Buildings are lasercut styrene and PETG.
Custom hand made trees.

Final presentation model
Kauffman Center for the Performing Arts
Kansas City, MO, USA
1' = 1/8th" scale
Styrene, white foam and strathmore base.
Buildings are lasercut styrene and PETG.
Custom hand made trees.



Final presentation model
Kauffman Center for the Performing Arts
Kansas City, MO, USA
1' = 1/8th" scale
Styrene, white foam and strathmore base.
Buildings are lasercut styrene and PETG.
Custom hand made trees.

Moshe Safdie and Associates Boston, MA



Competition model
Guangdong Science Center
China
1-500 scale
Urethane foam base, rippled acrylic water,
buildings made from vac-formed styrene,
renshape and acrylic.



Competition model
Guangdong Science Center
China
1-100 scale
Rippled acrylic water, styrene walkways,
buildings made from vac-formed styrene,
renshape and acrylic.
Lighting achieved with rope light under
model.



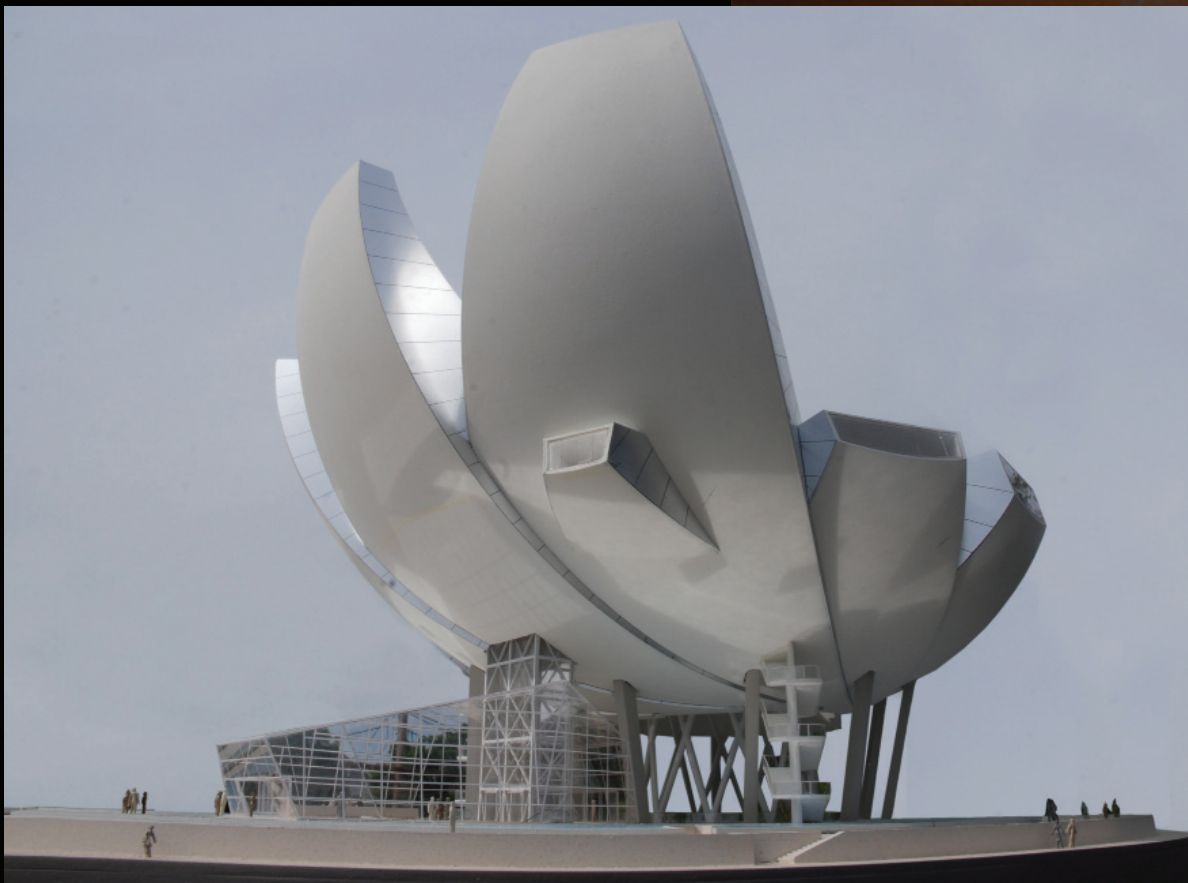
Competition model
Guangdong Science Center
China
1-100 scale
Rippled acrylic water, styrene walkways,
buildings made from vac-formed styrene,
renshape and acrylic.

Moshe Safdie and Associates Boston, MA



Final presentation model
Zahal Square
Jerusalem, Israel
1-100 scale
Bass wood and wood veneer. Custom hand made trees.

Final exhibition model
Ben Gurion Airport
Tel Aviv, Israel
1'100 scale
Vac-formed styrene, strathmore, Bass wood and wood veneer.



Final exhibition model
Marina Bay Sands Arts/Science Museum
1-200 scale
Laser cut styrene and PETG, Custom acrylic metal veneer, 3D ABS print .

Moshe Safdie and Associates Boston, MA



Final presentation model
Danube Integrated Resort
1-500 scale
Laser cut styrene and PETG, acrylic, basswood,
wood veneers, custom made trees.

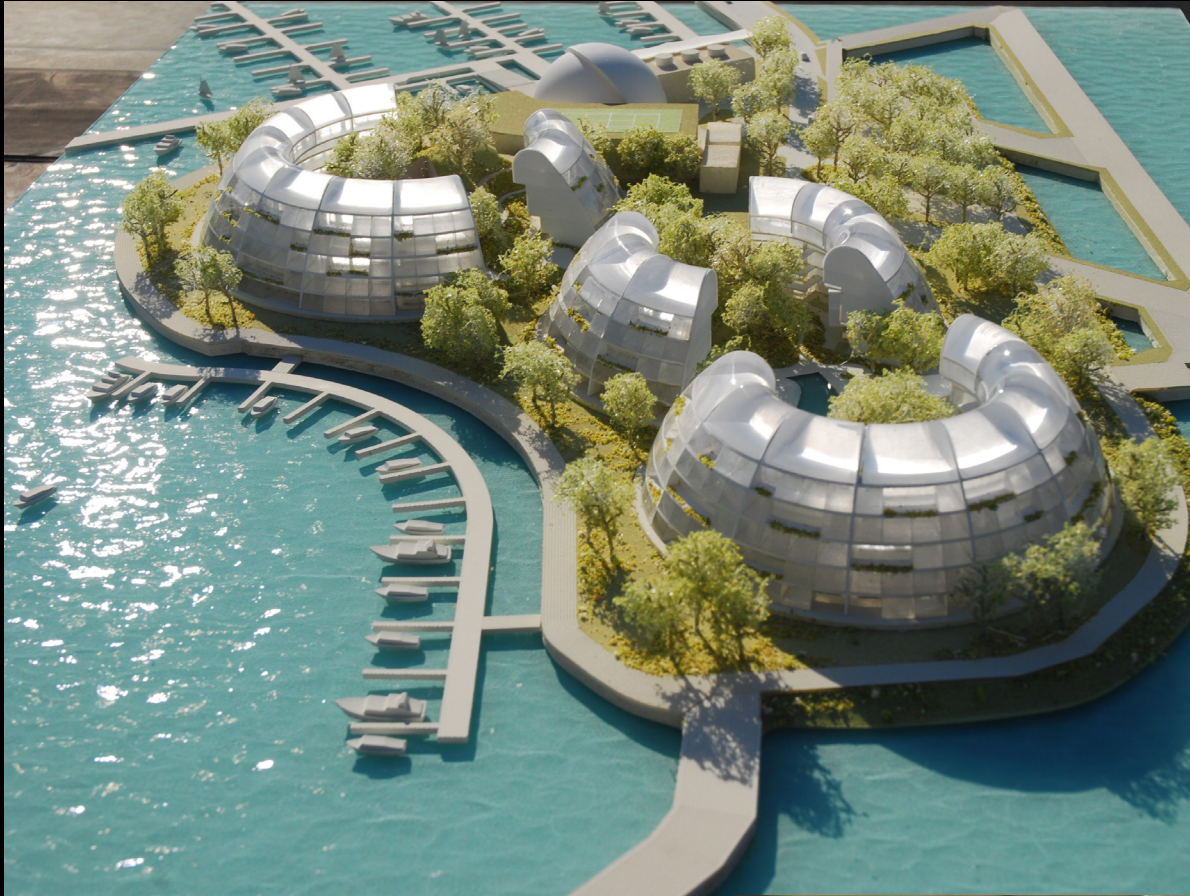
Final presentation model
Danube Integrated Resort
1-500 scale
Laser cut styrene and PETG, acrylic, basswood,
wood veneers, custom made trees.
Lighting with rope light in base.
Highlights with flashlight.



Final presentation model
Danube Integrated Resort
1-500 scale
Laser cut styrene and PETG, acrylic, basswood,
wood veneers, custom made trees.
Lighting with rope light in base.
Highlights with flashlight.



Moshe Safdie and Associates Boston, MA



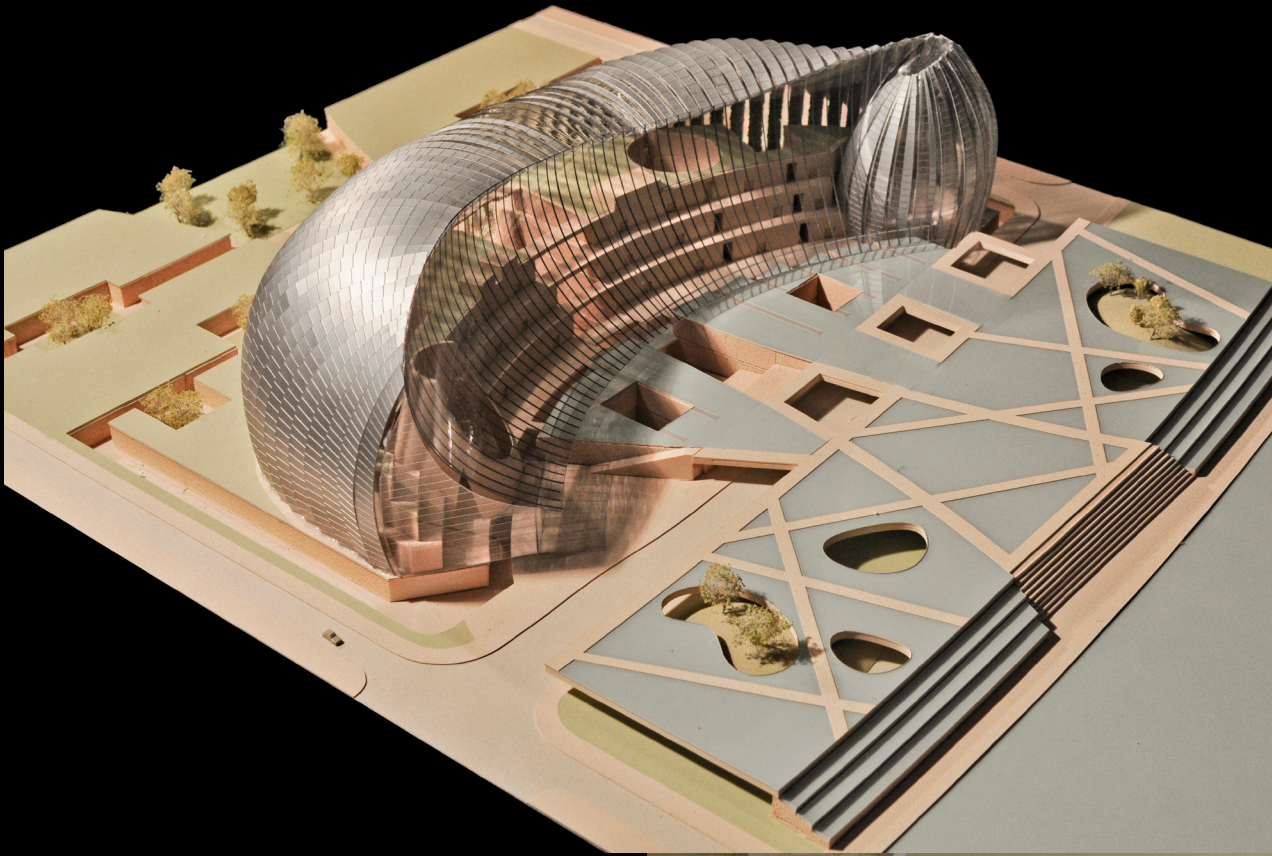
Design model
Keppel Island
Singapore
1-400 scale
Rippled backpainted base, acrylic and styrene buildings, custom hand made trees.

Study model
Residential tower
Singapore
1-20 scale
Styrene clad foamcore, lasercut PETG windows, custom hand made trees. .



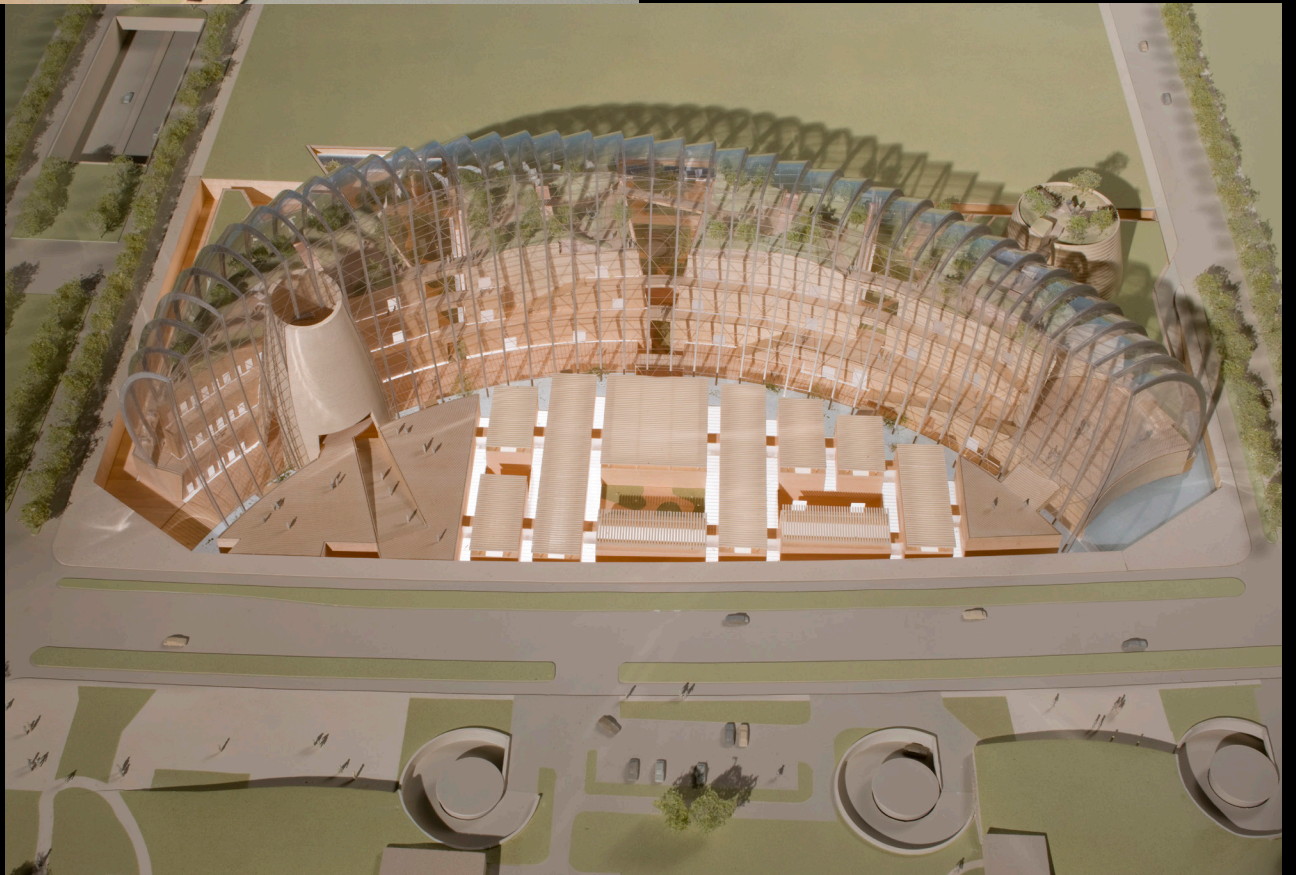
Final exhibition model
Crystal Bridges Museum of American Art
Bentonville, Arkansas, USA
1/4" = 1' scale
Laser cut styrene and PETG, vac formed roof shell with painted styrene layers and beams.
Rippled backpainted acrylic base.

Moshe Safdie and Associates Boston, MA



Concept model
National Art Museum of China
China
1-400 scale
Foam and PETG base, interior buildings -
basswood, shell - painted and clear lasercut
PETG.

Final Competition model
National Art Museum of China
China
1-200 scale
Foam, acrylic block and PETG base, interior
buildings - solid acrylic clad in basswood
veener, shell - painted and clear lasercut PETG.



Final Competition model
National Art Museum of China
China
1-200 scale
Foam, acrylic block and PETG base, interior
buildings - solid acrylic clad in basswood
veener, shell - painted and clear lasercut PETG.



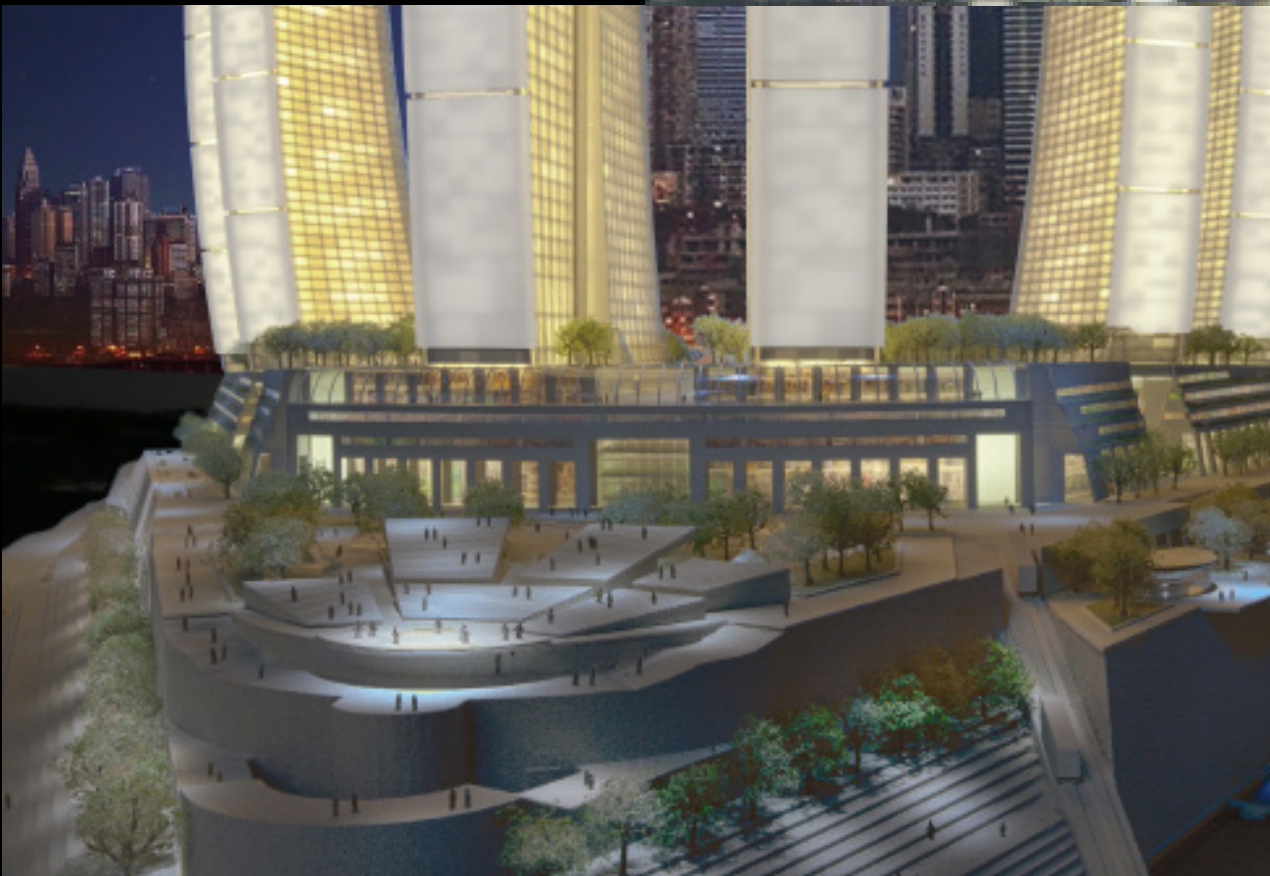
Moshe Safdie and Associates Boston, MA



Competition model
Capital Theater
Singapore
1-200 scale
Foam, acrylic and PETG base, solid massing
buildings - basswood, main building- painted
and clear lasercut PETG.



Final Competition model
Dynasty Raffles City
Chongqing, China
1-200 scale
Foam, acrylic and PETG base, solid massing
buildings - basswood, light buildings- painted
and clear lasercut PETG.



Final Competition model
Dynasty Raffles City
Chongqing, China
1-200 scale
Foam, acrylic and PETG base, solid massing
buildings - basswood, light buildings- painted
and clear lasercut PETG.

Wilson Butler Architects Boston, MA



The Carpenter Center
Richmond Center Stage
Richmond, VA, USA
Wilson Butler Architects
1/8th Scale
Foamcore, card, paper, acrylic, basswood, aluminum,
custom painting, rice lights

The Virginia Performing Arts Center
Richmond, VA, USA
Wilson Butler Architects
1/8th Scale
Foamcore, card, paper, acrylic, basswood, aluminum,
custom painting, rice lights



The Music Hall interior
The Virginia Performing Arts Center
Richmond, VA, USA
Wilson Butler Architects
1/4th Scale
Foamcore, card, paper, acrylic, basswood, aluminum,
custom painting, rice lights



Wilson Butler Architects Boston, MA



Celebrity Solstice
Royal Caribbean Cruises
Miami, FL, USA
Wilson Butler Architects
1-20 Scale
Basswood, Foamcore, acrylic, card, paper, custom painting

Celebrity Solstice
Royal Caribbean Cruises
Miami, FL, USA
Wilson Butler Architects
1-10 Scale
Basswood, Foamcore, acrylic, card, paper, custom painting



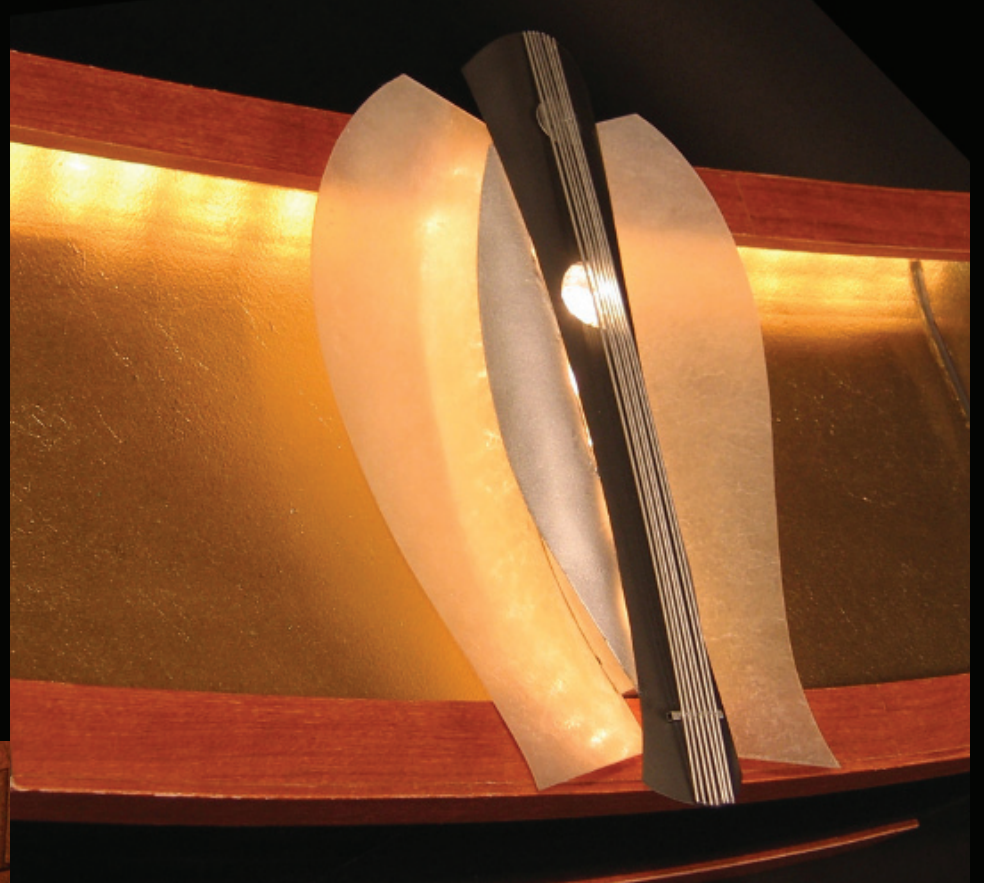
Celebrity Solstice
Royal Caribbean Cruises
Miami, FL, USA
Wilson Butler Architects
1-50 Scale
Basswood, Foamcore, acrylic, card, paper, custom painting

Wilson Butler Architects Boston, MA



Oasis of the Seas - Aquatheater, Boardwalk, Central Park.
Royal Caribbean Cruises
Miami, FL, USA
Wilson Butler Architects
1-50 Scale
Foamcore, paper, card, acrylic, basswood, custom painting

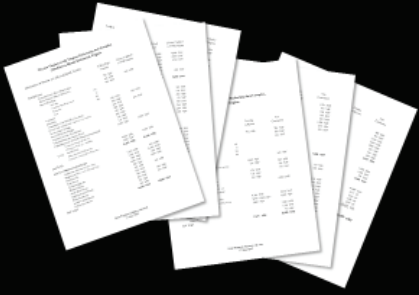
Custom ceiling light fixture
The Virginia Performing Arts Center
Richmond, VA, USA
Wilson Butler Architects
1" = 1ft Scale
Foamcore, card, paper, acrylic, basswood, aluminum, custom painting, rice lights



Oasis of the Seas - Blaze nightclub door
Royal Caribbean Cruises
Miami, FL, USA
Wilson Butler Architects
1-10 Scale
Basswood, Foamcore, acrylic, card, paper, custom painting, miniature fluorescent lighting

Case Study - Programming models

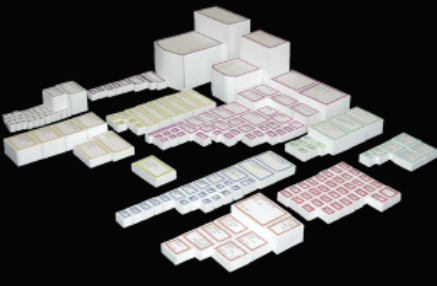
1. Establishing the Program



2. Visualizing the Spaces



3. Understanding Volumes



4. Defining Context



Programming Models - In the early stages of most projects of a large scale, master planning is considered and developed. At Wilson Butler this would involve taking the program for a space and extrapolating that into volumes. These volumes would then be made at scale and a programming model would take shape. The volumes or blocks would all be color coded and volumetric studies of the building mass would be tested on a scale site. At WBA I was increasingly responsible for much of this process, including the study of the program and conversion to blocks.

Right:- The New England Performing Art Center Site model at a presentation. This model gave the client and WBA a great sense of reality when designing. The Programming blocks alone gave the client a very real perception of what it was they were asking for.



Left:- San Francisco State University. Programming model. From conception to completed in 5 days and shipped to San Francisco for presentation. Here you see one of 4 final layout options. I worked on the programming volume conversion with one other person. I created all graphics including the base. Construction of the blocks was done by a co-worker.

Right:- Oasis of the seas programming model. This was built in Miami by myself and 3 others in 4 days for a meeting. I really helped Royal Caribbean understand the complexities of the design and operation of a ship that will be the largest ever built.



Wilson Butler Architects Boston, MA

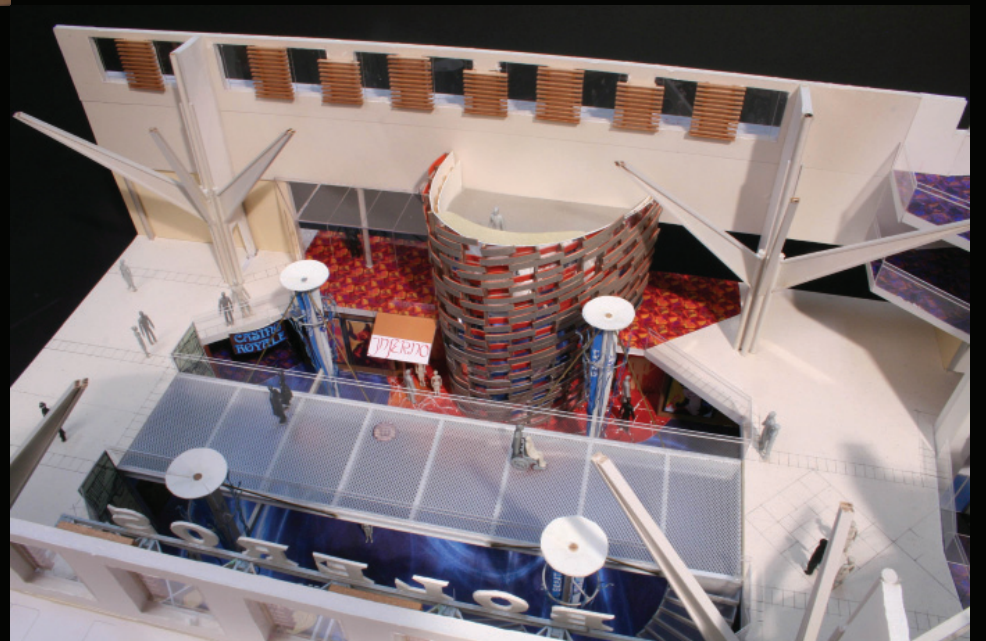
Case Study - Competition models



Left and below:- This is the culmination of a 2 week collaboration between Wilson Butler Architects, BMW Designworks and Celebrity Cruises. In January 2005 I was flown to Newbury Park CA. I was tasked with building and assisting in the design of this model. I was the main model maker on this task. It is made from Renshape and acrylic. The hull was CNC milled as were the deck plates. All the other parts were made by hand from Renshape by myself. The model was then shipped to Miami for presentation.



Right and below:- This is the culmination of a long weekend charrette in May of 2006. It was for Royal Caribbean's Oasis of the Seas. We were asked to compose a presentation that would compete with 2 other companies to win the contract to design what was called the Great Blue Way. In the end 5 people worked on this over many hours to complete what you see. Much of the look and design was made up for the model long before any drawings were created. We won the competition although the GBW as it looks here was ultimately eliminated.

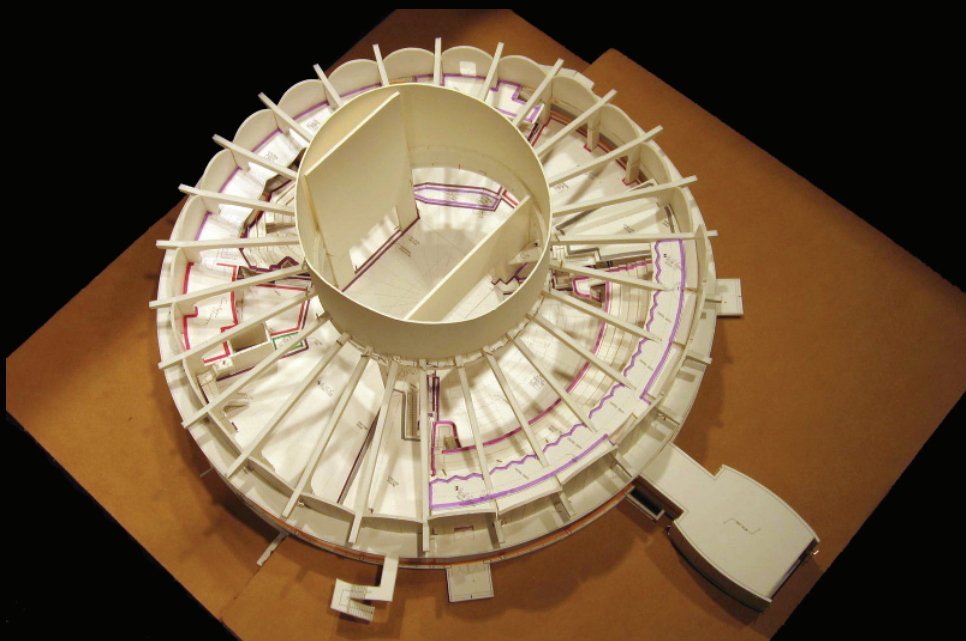
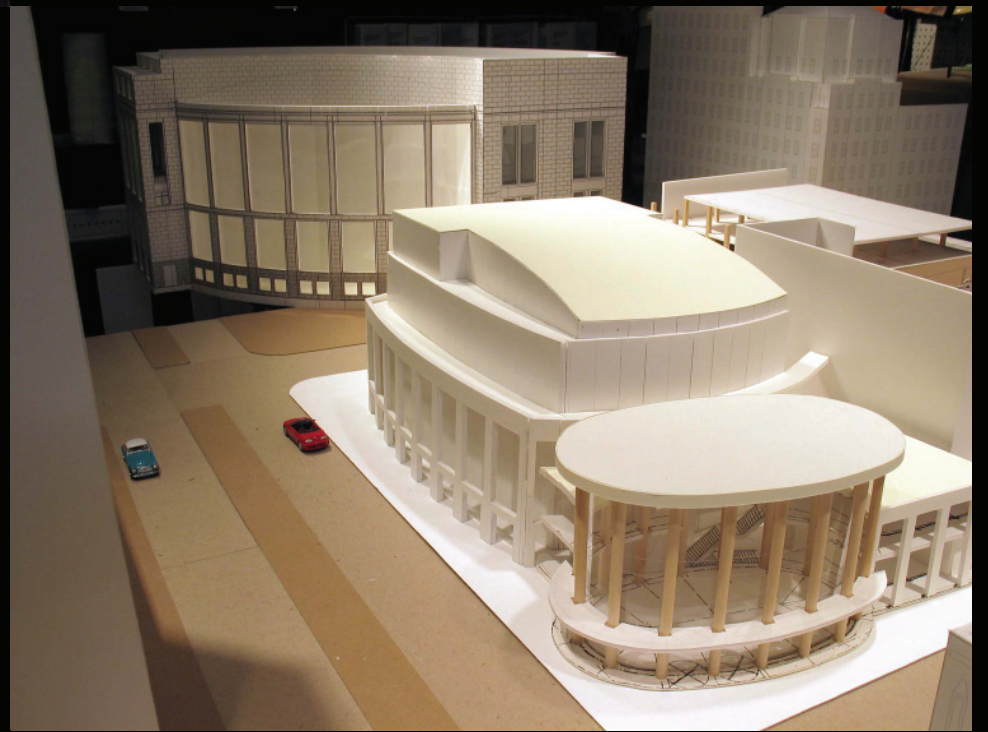


Case Study - Study models



Study Models - For many of the building designs, study models are produced at a break neck pace over and over again

Left and below:- The Virginia Performing Art Center music hall study models. To the left are 9 versions of the rotunda. This is only a few of the many that were produced over a 2 month design development period. Typically 2 or 3 were built in an 8 hour day. The models were based of drawings both computer based where possible but mainly hand sketches. There were often changes made repeatedly as the model took shape, both for design reasons and as a response to the model. Below is the base that the designs were set into to see them in context. The Music Hall connected to the rotunda went through many variations too.



Left:- In the early stages of any project a model like this would be built. The model shows the program of a building in context. In this case at Brandies University the building already existed so this model shows the layout they have now. The rooms are color coded to show different principal uses from dance, to theater, to offices. This model comes apart level by level and this would be used to visually explain to the client the current problems. We would then make patches that would overlay the floor plates, showing our suggested solutions.

Right:- This is one of many steel structure study models I made at WBA. Scott Wilson would often have me model the steel structure shown in the drawings from the ship yard. We would use the result to assess problems and to show ways to rectify issues. It also helped us understand the space we were designing within and areas of conflict.



Case Study - Full scale mock ups



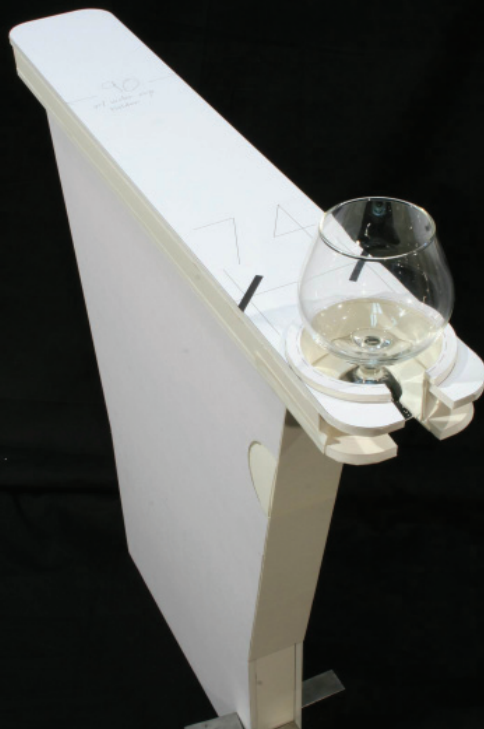
Left:-
Oasis of the Seas - Aquatheater seating
Royal Caribbean Cruises
Miami, FL, USA
Wilson Butler Architects
1-1 Scale
Plywood, Foamcore, custom painting
Chairs are a real sample



Right:-
Custom railing design
The Virginia Performing Arts Center
Richmond, VA, USA
Wilson Butler Architects
1-1 Scale
Foamcore, card, acrylic, basswood, custom painting,

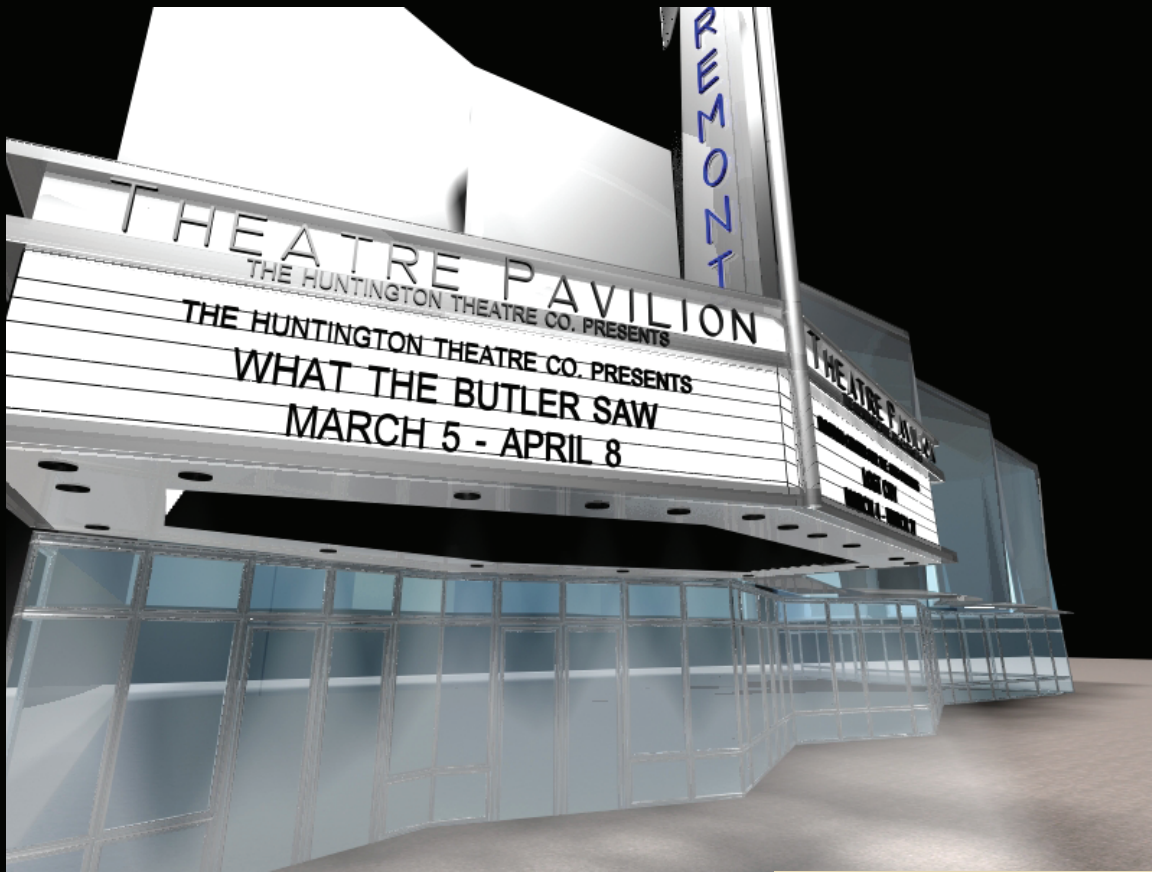


Left:-
Oasis of the Seas - Dazzles column light fixture
Royal Caribbean Cruises
Miami, FL, USA
Wilson Butler Architects
1-1 Scale
Foamcore, halogen lighting, material sample.



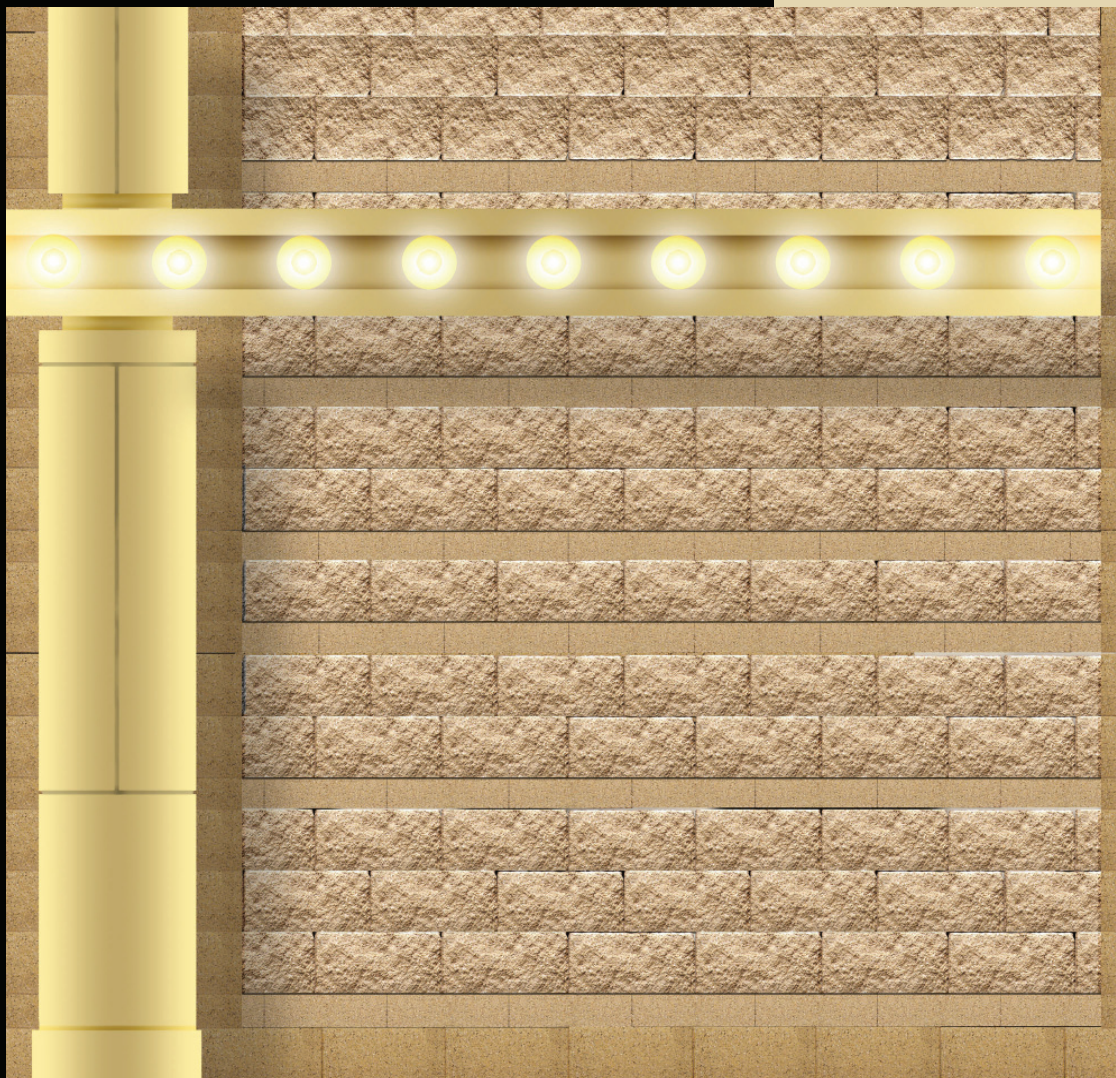
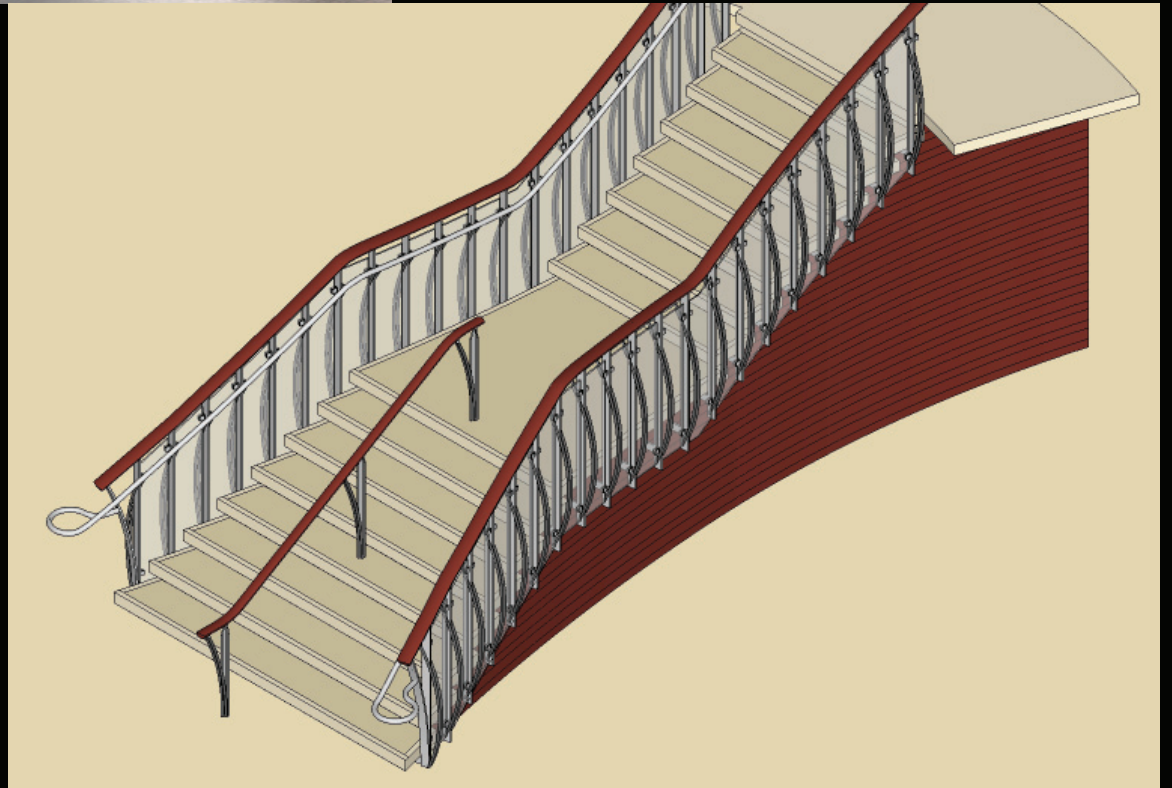
Right:-
Theater arm res with cupholder design and test
Celebrity Cruises
Miami, FL, USA
Wilson Butler Architects
1-1 Scale
Foamcore, card

Wilson Butler Architects Boston, MA



The Calderwood Pavilion
Boston, MA, USA
Wilson Butler Architects
3D Studio VIZ 2 model

Celebrity Solstice
Royal Caribbean Cruises
Miami, FL, USA
Wilson Butler Architects
Sketch up 6 model

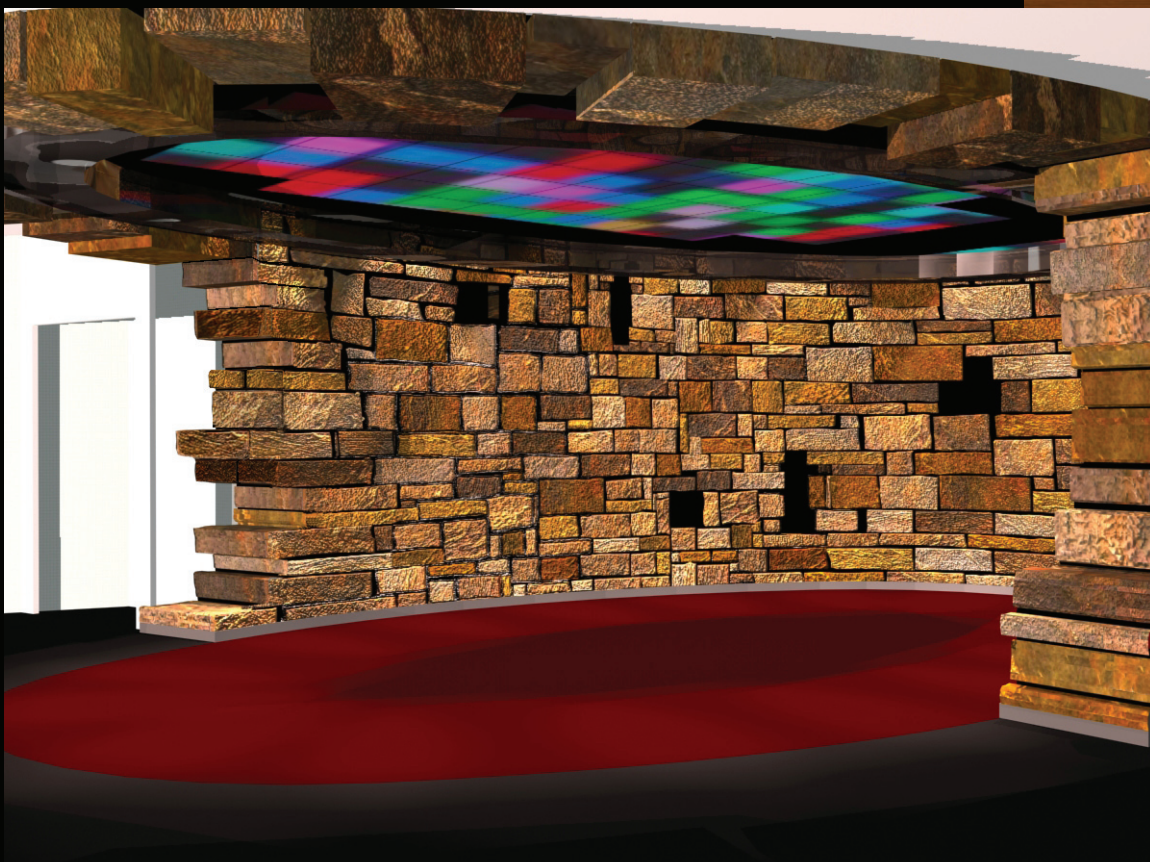
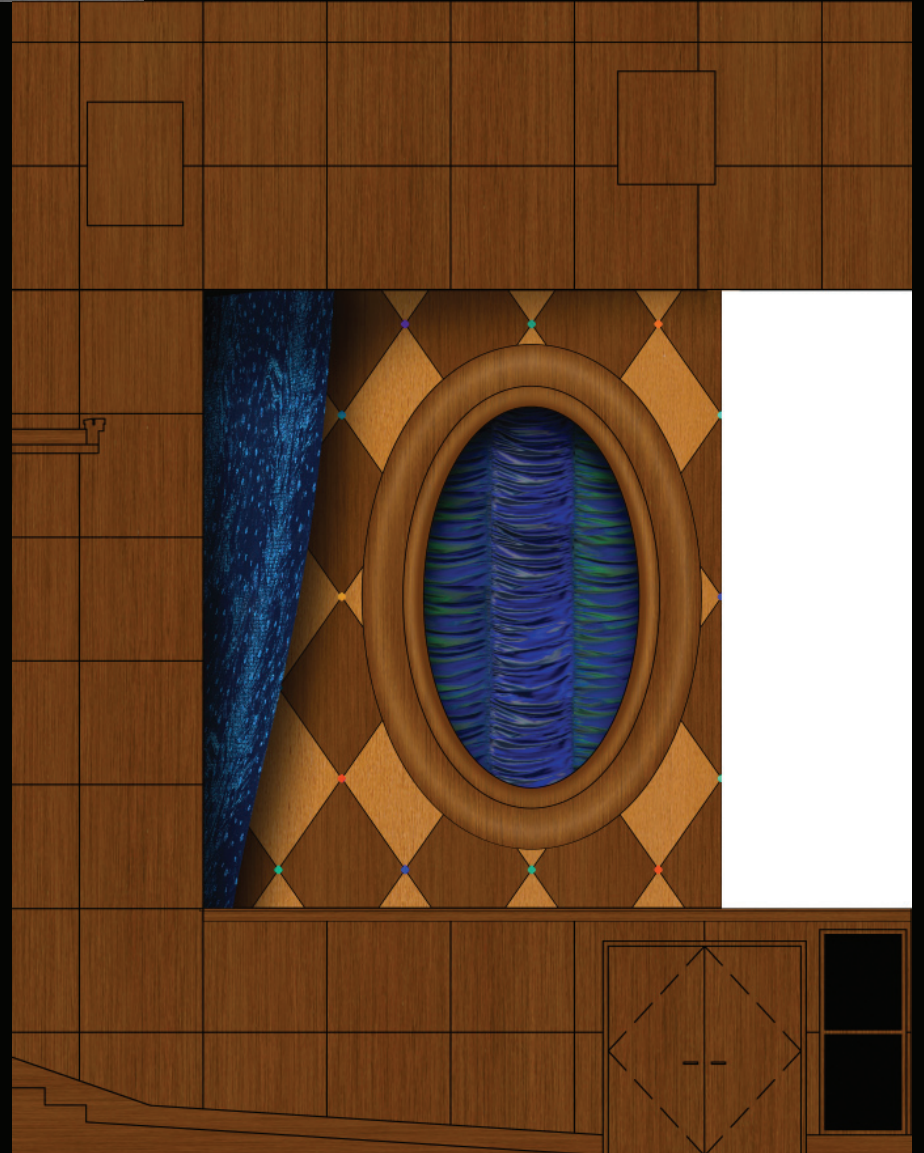


Towson University Center for the Arts
Towson, MD, USA
Wilson Butler Architects
Photoshop rendering of a wall option



Oasis of the Seas - Central Park living wall
Royal Caribbean Cruises
Miami, FL, USA
Wilson Butler Architects
Sketch up 6 model

Oasis of the Seas - Main theater
Royal Caribbean Cruises
Miami, FL, USA
Wilson Butler Architects
Photoshop rendering of Theater cheek wall



Oasis of the Seas - Blaze nightclub dance floor wall
Royal Caribbean Cruises
Miami, FL, USA
Wilson Butler Architects
3D Studio VIZ 4 model

Case Study - Presentation boards



A key part of any project is the presentation of work. Whether to a client of a current project or of past work for potential clients. At Wilson Butler Architects I was often tasked with aspects of this. Working with marketing we would plan, layout, produce, ship and set up presentation boards like these pictured.

Left: are 3 boards from a set of 8 that showcase Wilson Butler Architects best work over the previous 10 years. They were on display at The Calderwood Pavillion at the WBA 10th anniversary party.

Right: Presentation boards at the Stand Theater in Dorchester MA describing the improvements done by Wilson Butler Architects. The boards were displayed at the theater for the State of the City Address by Major Thomas Menino in January 2007.



Left: Presentation boards of the masterplan for Boston University's College of Fine Arts properties. This was the final presentation to the Dean of the University at 808 Commonwealth Ave.

PHOTOGRAPHY



At Wilson Butler Architects, over the period of the first few years, I became the principal in house photographer. The pictures that needed to be taken varied from materials samples, to lighting designs, finished projects and of course models.

Left:- I was often tasked with photographing the interiors departments boards for later reference of use in Powerpoint shows. Based on the materials in the boards I would assess the best light to photograph them in, adjust white balance settings constantly and sometimes do clean up for the final image in Photoshop.

Right:- Here I was given various glass samples. Some were acid etched, others had silk-screen designs on them. I had to photograph them all in controlled conditions under Color Kinetics lighting. I built a jig to hold the samples and the light fixture in the correct place. After many test photographs with Canon Remote Capture software and a laptop I took 20 images that were spliced together into short animations and the designs and samples were evaluated in a board meeting at Celebrity board meeting.



Left:- A small but important project at Wilson Butler Architects was the renovation of the Strand. The exterior facade of the theater was renovated in January of 2009. The marketing lady at WBA needed an image of the project for an RFI as soon as the project was completed, to save time and money I went to Upham's Corner at dusk and took 10 or more photographs including this one.

PHOTOGRAPHY

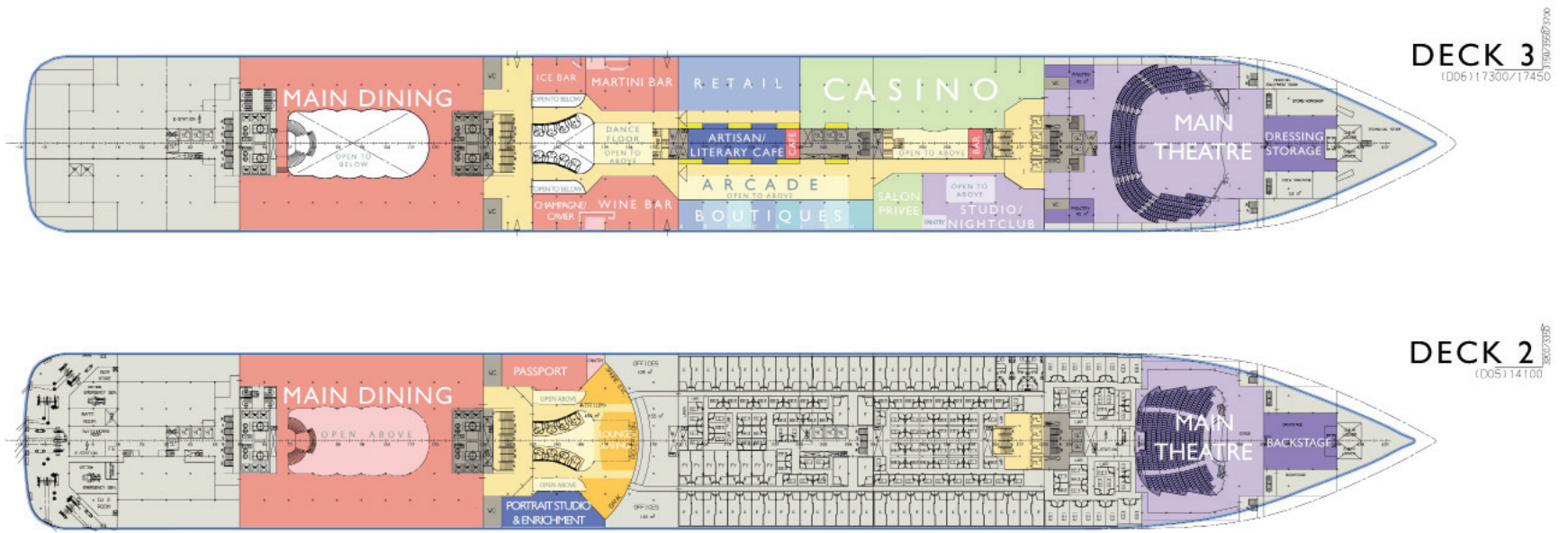
Since I was 10 I have had a manual camera. At the age of 20 i got my first SLR. It was a Pentax and I dragged it everywhere. I progressed from there to a Minolta and then to a Nikon N6006 which i still have. With the advent of digital photography I have moved on to a Nikon D80. I drag it everywhere I go much to the annoyance of my fiance. Here are come of my best images over the past 5 years.



PHOTOGRAPHY

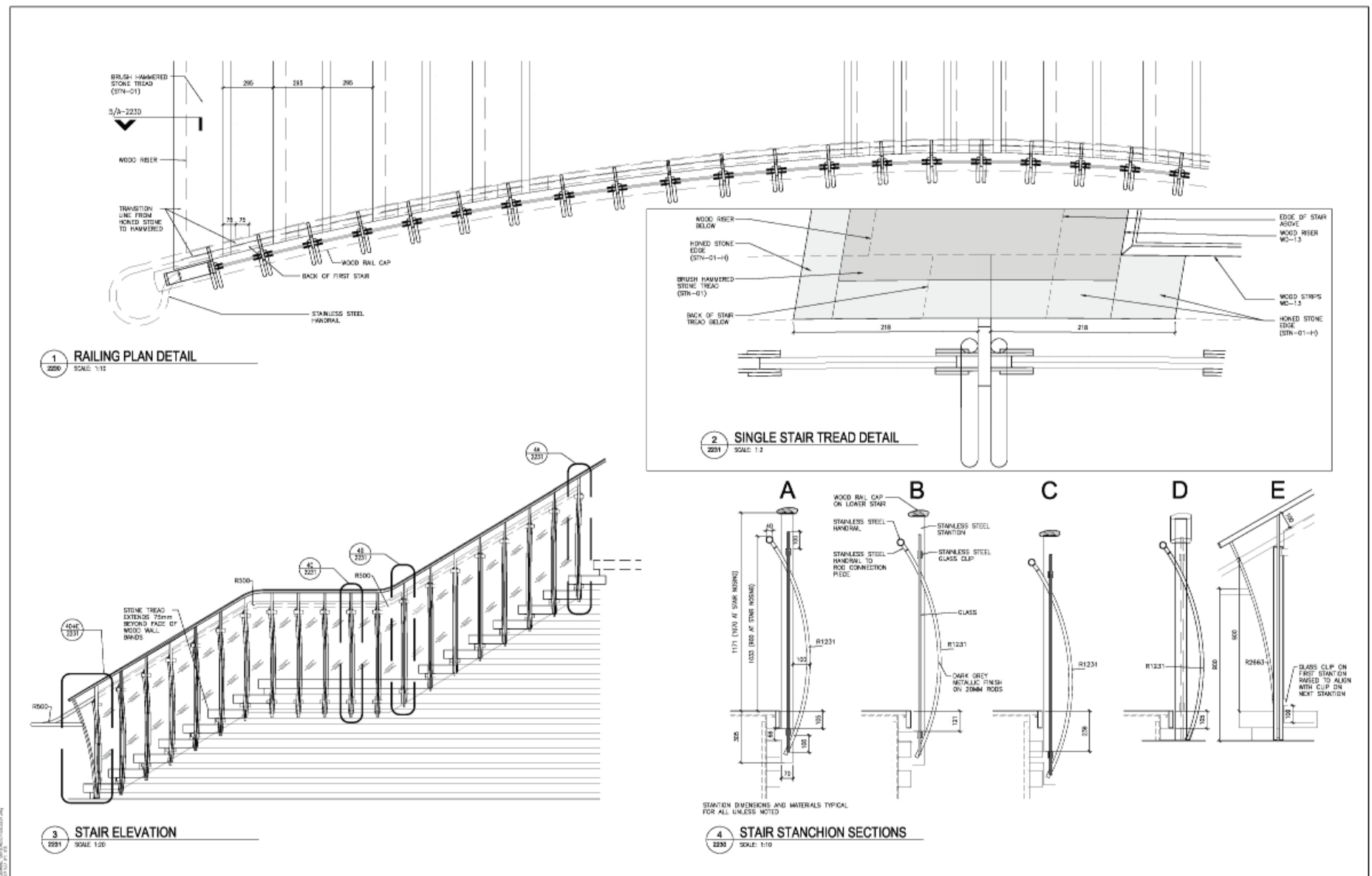


CAD drawing



CHALLENGER • GA SPACE DIAGRAM • DECKS 2 & 3

PRELIMINARY



Wilson Butler Architects
200 State Street
Boston, MA 02109
617-267-1111
617-267-1118

Celebrity **X** Cruises®

CELEBRITY SOLSTICE

GROUP 3 - GRAND FOYER
REVISIONS
WEEK 07 APR. 2008

2008 MAR 07 - VERSION D	2007 FEB 01 - VERSION G
2008 MAR 10 - VERSION A	2007 FEB 19 - VERSION H
2008 MAR 20 - VERSION B	2007 FEB 28 - VERSION I
2008 MAY 20 - VERSION C	2007 MAR 06 - VERSION J
2008 JULY 14 - VERSION D	2007 APR 06 - VERSION K
2008 SEPT 18 - VERSION E	2008 FEB 01 - VERSION L
2008 DEC 01 - VERSION F	2008 APR 07 - VERSION M

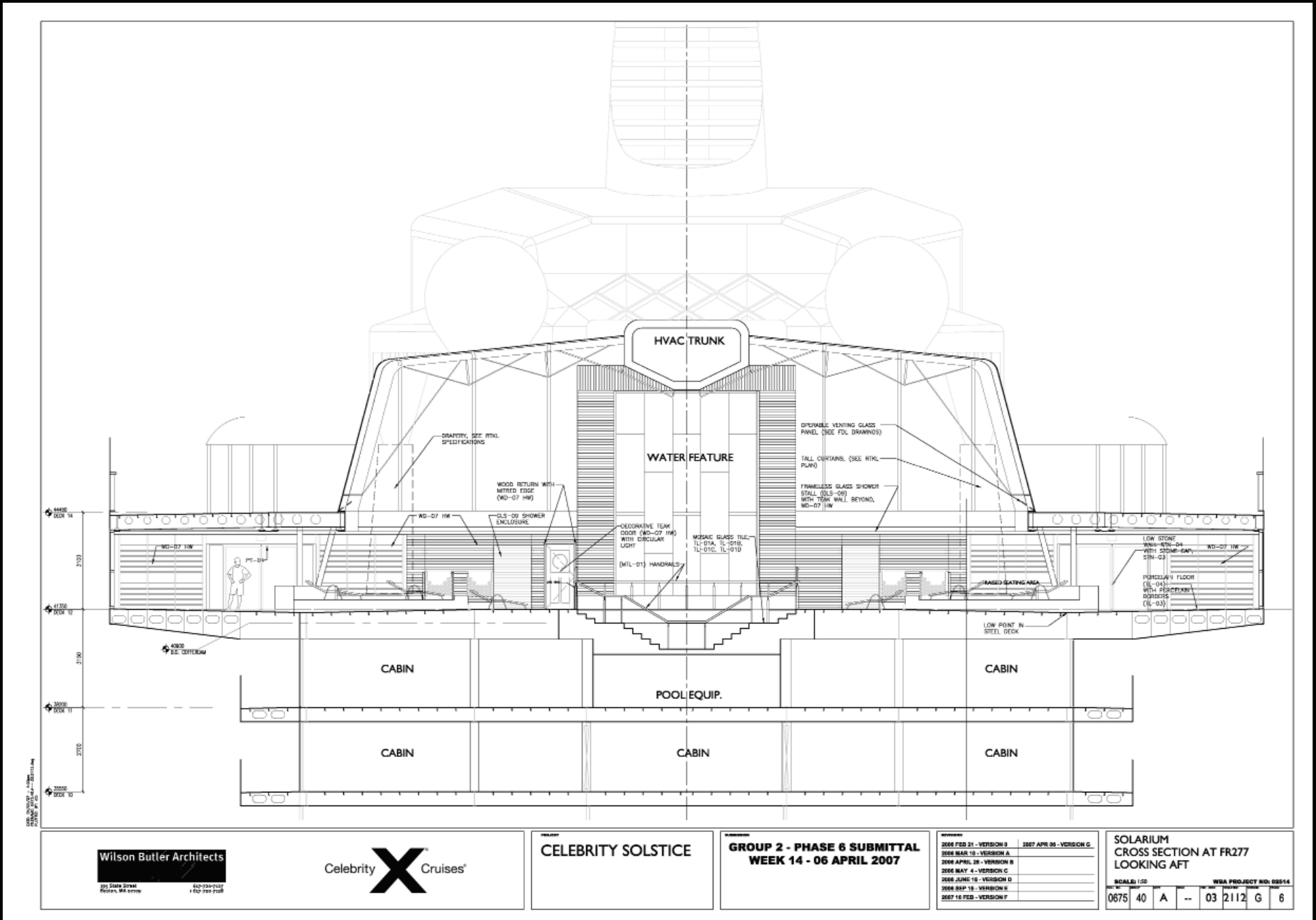
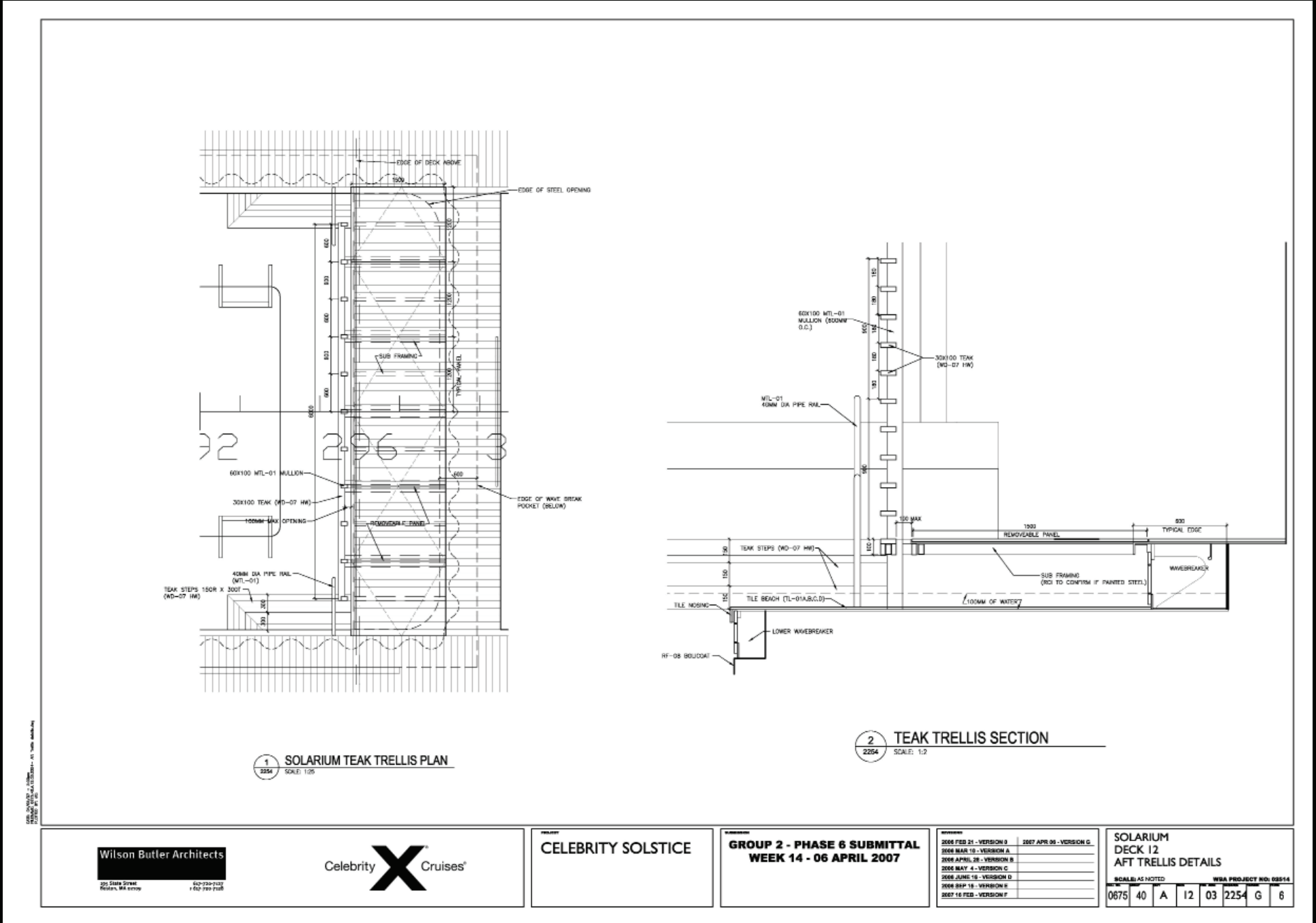
GRAND STAIR DETAILS

SCALE: 1:K

WBA PROJECT NO: 00516

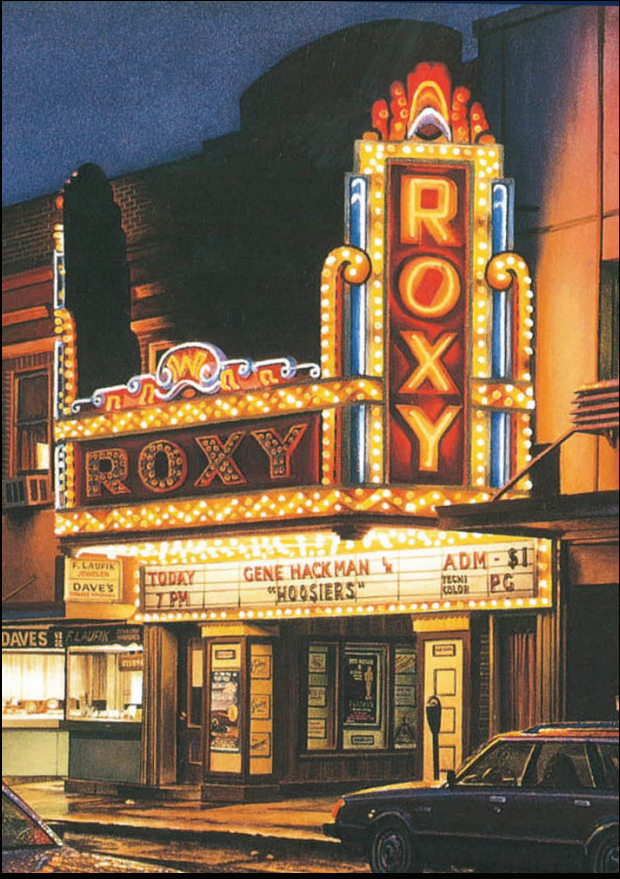
0675	40	0	-	05	2231	M	6
------	----	---	---	----	------	---	---

CAD drawing



Wilson Butler Architects Boston, MA

Case Study - 10 Anniversary Marquee



The inspiration image that I was given to base the whole design off.



The graphics I created in Illustrator and Photoshop. Once finalised these were printed, highlighted with spray paints and mounted to 1/2 inch foam board



This is the final design in place at the 10th anniversary celebration