

## Cozy Pajamas

### Materials

- 2 coordinating fat quarters (A, B)
- 1 package coordinating ¼-inch-wide single-fold bias tape
- 8 inches ¼-inch-wide elastic
- ¾ x 1½-inch piece fusible hook-and-loop tape
- Coordinating all-purpose thread
- Basic sewing supplies and equipment

### Cutting

- Use pattern templates NP1–NP3 and SP1 (pages 42 and 48). Fold fat quarters in half, right sides together. Transfer all pattern markings to fabric.

### From fabric A:

- Cut one Pajama Top Yoke Front (NP2) on fold.
- Cut two Pajama Top Yoke Backs (NP3).
- Cut two Pajama Bottoms (SP1) on fold.

### From fabric B:

- Cut one Pajama Top Front (NP1) on fold.
- Cut two Pajama Top Backs (NP1).

### Assembly

Stitch right sides together using a ¼-inch seam allowance unless otherwise specified. Refer to General Instructions (page 2) for finishing all raw edges and for the following construction techniques: Bias-Tape Bound Edges, Gathering, Double-Turned ¼-Inch Hem, Elastic Waistline Casing, Bias-Tape Hem and Fastener Application.

### Pajama Top:

1. Stitch Pajama Top Yoke Front (NP2) and Back (NP3) together at shoulder seams; press seams open.
2. Gather top edges of Pajama Top Front and Back pieces.
3. Stitch front and backs to yokes, matching center fronts and backs. Press seams toward yokes.
4. Bind neckline and armholes using bias tape.
5. Stitch side seams; press seams toward backs.
6. Bind Pajama Top hemline using bias tape.
7. Stitch a Double-Turned ¼-Inch Hem along back edges of Pajama Top.



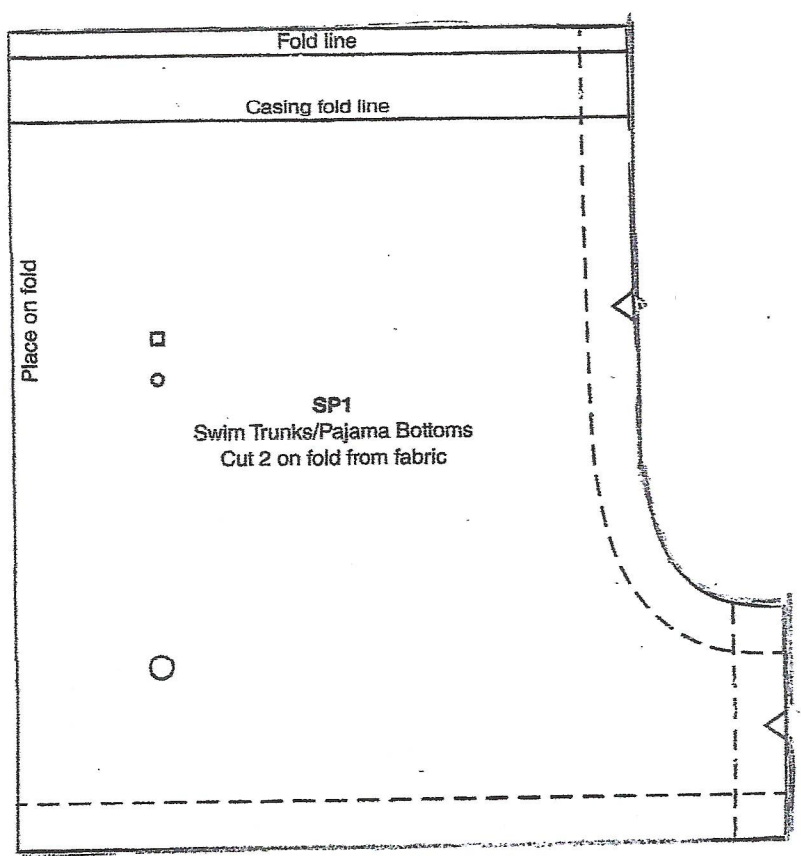
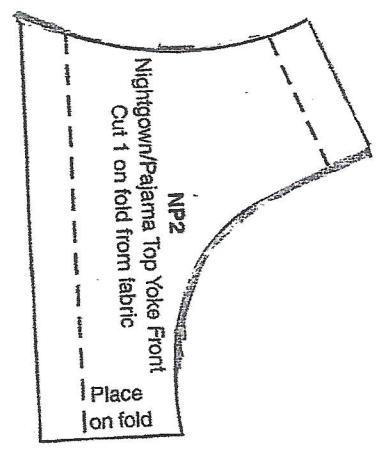
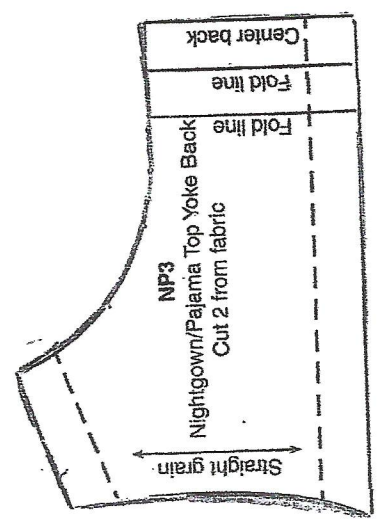
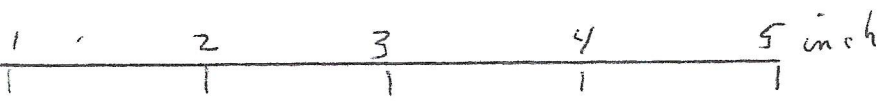
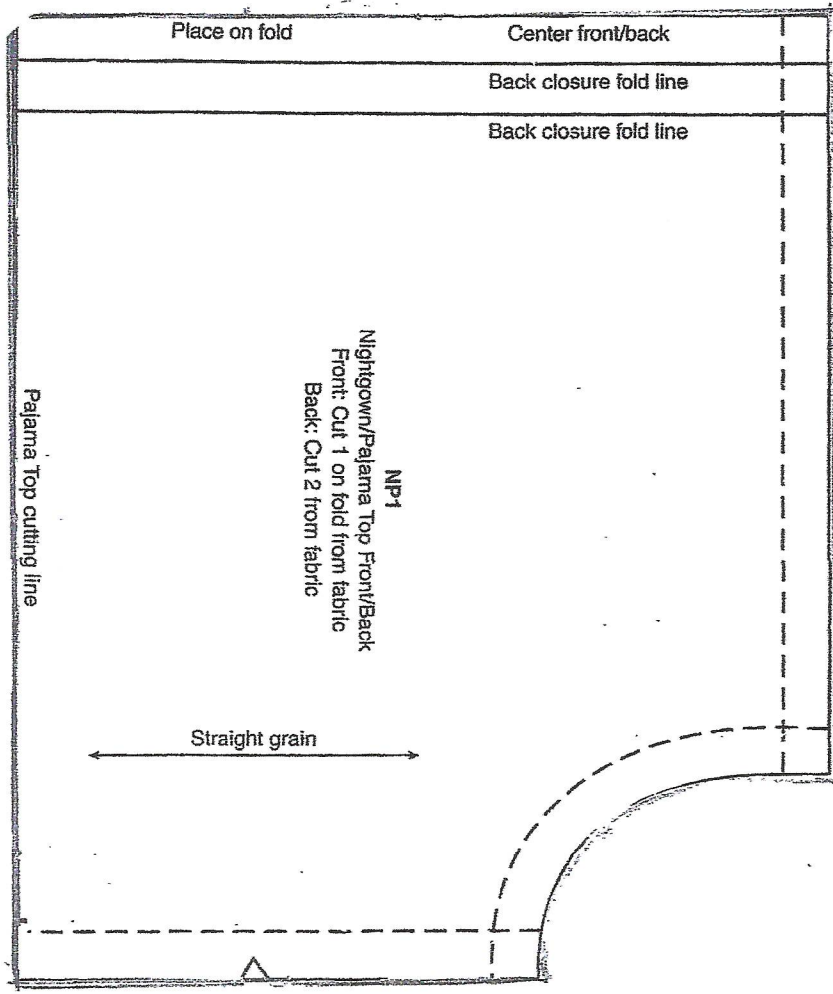
8. Apply fusible hook-and-loop tape fastener to Pajama Top Back openings.

### Pajama Bottoms

1. Stitch Bias-Tape Hem in Pajama Bottom legs.
2. Stitch center front seam of Pajama Bottoms.
3. Make an Elastic Waistline Casing and thread elastic through the casing, pinning ends of elastic even with the fabric edges.
4. Stitch center back seam.
5. Stitch inner leg seam. ■



# COZY PAJAMAS (3)



## GENERAL DIRECTIONS

Seam allowance 1/4" unless noted in the direction on the pattern

Gathering threads use the longest stitch on your machine

### NECK EDGE

follow directions for whichever application you wish to use, you will find them a separate sheet of paper

### SEWING TIPS

sew seams with small stitches

sew as much as possible in flat construction

leave the back of dresses, nightgowns, blouses open all the way down the back to the bottom of garment

use narrow strips of velcro or small squares for skirts, cape, bib when sewing the velcro on skirts, cape or bib sew around all four edges

do all sewing by machine

if using flat trim or rick rack sew down both edges

### HEMS

sleeves 1/4"

bottom edge 1/2"

### VELCRO STRIPS

Nightgowns, Dresses 2 1/4"

Blouses 1"

skirts with waistbands 3/8" x 5/8"

Bib, Cape 3/8" x 3/8"

if you have any questions feel free to call me

zoe 206 356 7947.

## GENERAL INFORMATION

### MATERIALS

1/4 to 1/3 yard per outfit

you may use med. weight cotton or cotton blend, also large cloth dinner napkins, pillowcases, light weight narrow wale corduroy, flannel

small design, plain, small checks, narrow stripes, overall spot design

pre-wash all fabric before cutting

cut out with pinking sheers if possible, if not buy a product called fray check at fabric stores and apply to seams before sewing

bias tape to match color of garment if possible, matching or clear and black transparent thread, velcro to match if possible, 1/8" and 1/4" wide elastic, when buying the elastic buy the braided kind, narrow ribbon for bonnets, narrow lace [opt.] flat trim, small narrow rick rack that is 100% polyester [opt]

### ELASTIC FOR DOLL CLOTHES

Dresses        1/8" short sleeved 4"  
                 1/8" long sleeved 3 1/2"

Sleeveless dress    1/4"        8" for neck area

Underpants        1/4"        10" for waist  
                 1/8"        6" for each leg

Pantaloon         1/4"        10" for waist  
                 1/8"        4" for each leg

skirts, pants, shorts    1/4"    10" for waist

one piece skirt    1/4"    10 1/2" for waist

bootie    1/8"    3 1/2"

bonnet with band    1/8"    4"

bonnet with out band    1/4"    8"

*Velcro*