

## RAGLAN SLEEVE BLOUSE

### PLEAT

1. With right sides together, sew along solid line to form pleat in front.

### NECK AREA

2. Follow directions for whichever application you wish to use.  
Refer to REGULAR COLLAR application directions.

### SLEEVES

3. Turn bottom edge of sleeve to wrong side  $\frac{1}{4}$ " and stitch in place for hem.
4. With right sides together sew sleeve side edges to armhole edges of the front and back blouse pieces.

### SLEEVE and UNDERARM SEAMS

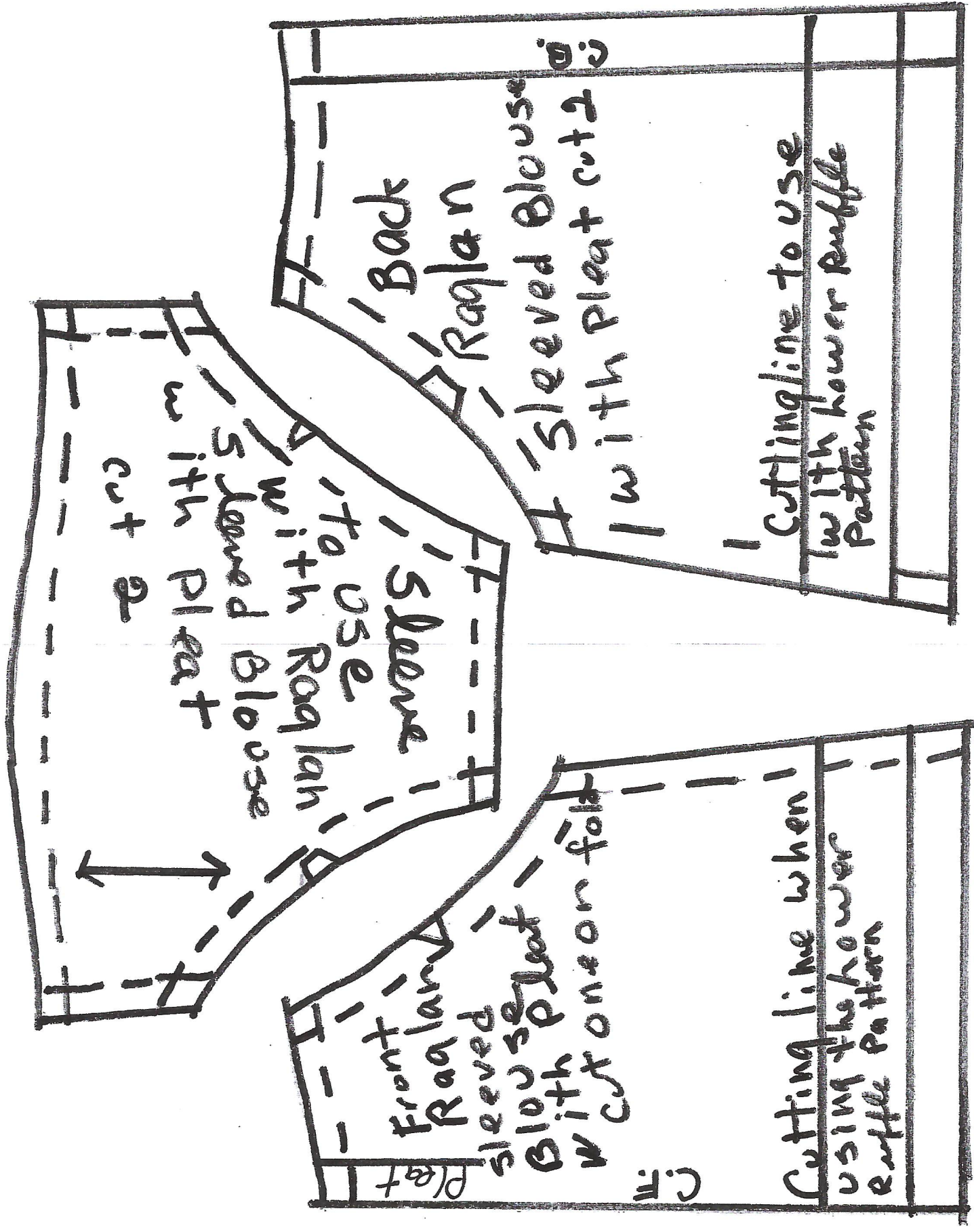
5. Right sides together, match sleeve and underarm seams.
6. Sew the side seams starting at the hem of the sleeve to the hem area of the blouse..

### HEM

7. Turn the raw edge of the bottom of the blouse to the wrong side  $\frac{1}{4}$ " then over again  $\frac{1}{4}$ " for a total  $\frac{1}{2}$ " hem.

### FINISHING

8. Lap right back over left back matching center back lines.
9. Sew a strip of Velcro down the back.



to use  
with  
Raglan  
Sleeved Blouse  
with Pleat  
cut 2

Back  
Raglan

Sleeved Blouse  
with Pleat cut 2

Cutting line to use  
with lower Ruffle  
Pattern

Front  
Raglan  
Sleeved  
Blouse  
with  
Pleat  
cut one on fold

Cutting line when  
using the lower  
ruffle pattern

C.M.

## REGULAR COLLAR

1. with right sides together sew collar sections around the outside edge, leaving neck edge open, clip curves, turn right side out press
2. pin collar to the right side to the neck edge between center back lines having raw edges even, \* turn back edges to the right side over collar along center back lines and stitch a 1/4" seam, clip curves
3. on right side stitch close to neck seam under collar catching the raw edges of collar, turn back edges to the wrong side along center back lines

## PETER PAN COLLAR

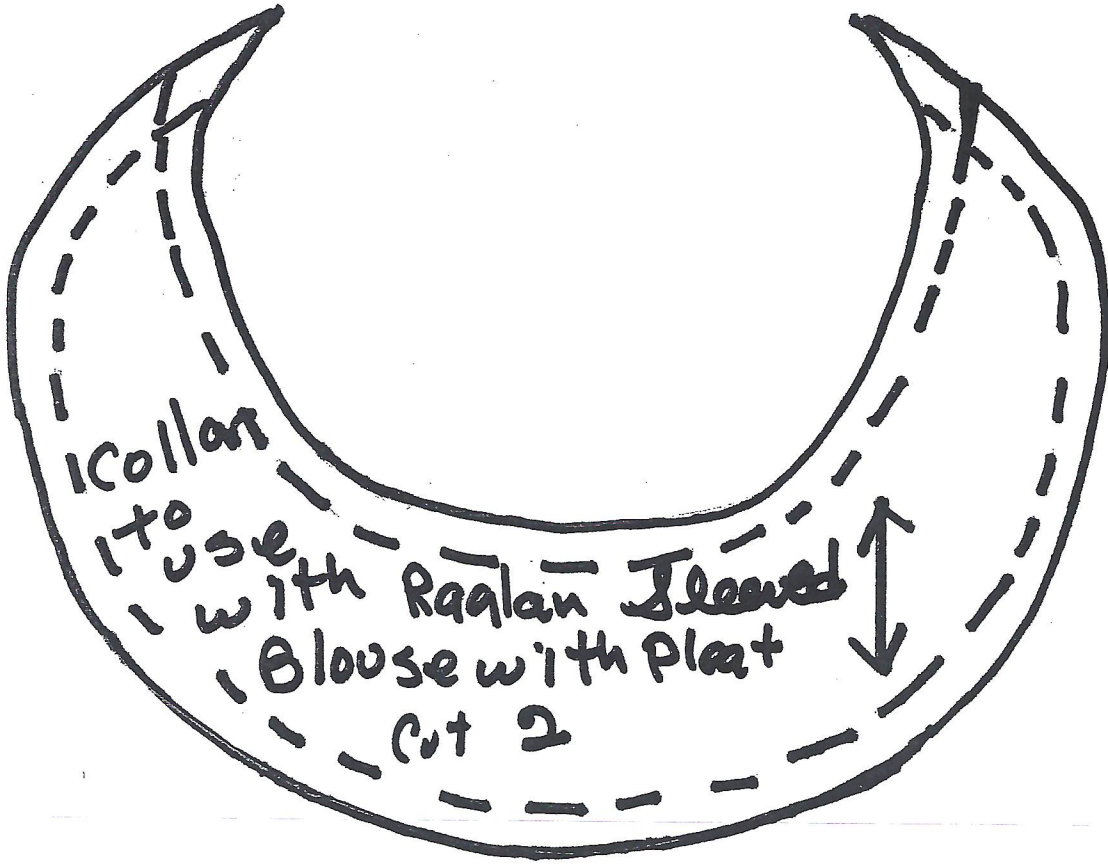
1. with two sections right sides together sew around the outer edges leaving neck edge open, repeat with other two sections, clip curves, turn collars right side out and press
2. pin collar sections to the right side to neck edge having raw edges even, matching center front of collar to center front of garment, matching center backs
3. follow step 2 from asterisk to the end of that step under regular collar
4. follow step 3 of regular collar

## DIRECTIONS FOR NECK FACING

1. WITH RIGHT SIDES TOGETHER PIN FACING TO NECK EDGE WITH BACK EDGES EVEN.
2. start sewing from the raw edge of facing 1/2" along center back line, then 1/4" along the neck edge, repeat the 1/2" sewing at the other center back line, clip neck edge
3. turn to the wrong side and sew close to the raw edge of facing between center back lines

## BIAS TAPE APPLICATION

1. turn back edges of garment to the wrong along center back lines
2. pin bias tape to the right side of garment along the neck edge turning the ends to the wrong side of garment so that it is even with the raw edges of center back., using the fold line as a guide sew thru both layers
3. turn bias tape to the wrong side of neckline and stitch thru all layers of fabric close to the folded edge



STAND UP Collar to use with Raqlan Sleeved Blouse with pleat - Cut one on fold

