

ANNA ROTHSTEIN ARCHITECTURE PORTFOLIO



INTRODUCTION

This portfolio is a selection of architecture projects created in my Bachelor at ETH Zürich between 2021-2024.

These works were chosen for their architectural expression, philosophical concept and stylistic choices. They show a broad range of skills ranging from CAD Drawings and Perspectives, to modelmaking and photography.

These Projects are a result of a collaborative process in diverse studios and were done during one semester at a time.

Through working with different people and their work ethics, communication and organisation skills were essential and thus further developed.

TIME AT ETH ZÜRICH

WHEN

Winter 2021
Summer 2022

Winter 2022
Summer 2023

Winter 2023
Summer 2024

WHO

Prof. Andrea Deplazes (Assistant Itten)
Prof. Andrea Deplazes (Assistant Bohler)

Prof. Emmanuel Christ and Christ Gantenbein
Prof. Emmanuel Christ and Christ Gantenbein

Prof. Adam Caruso
Prof. Francois Charbonnet and Patrick Heiz

CONTENT

1-2



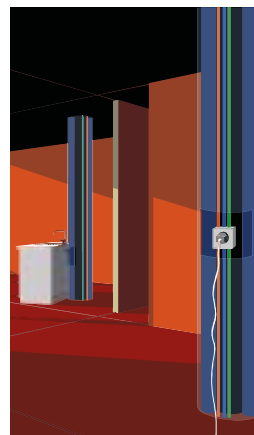
PROF. DEPLAZES

3-6



PROF. CHRIST & GANTENBEIN

5-8



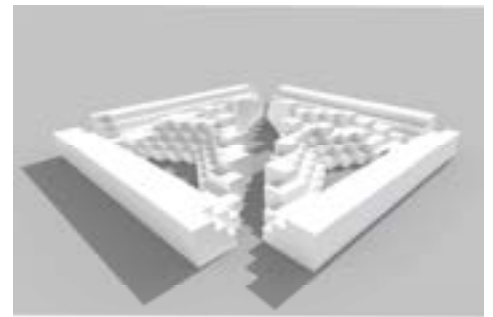
9-12



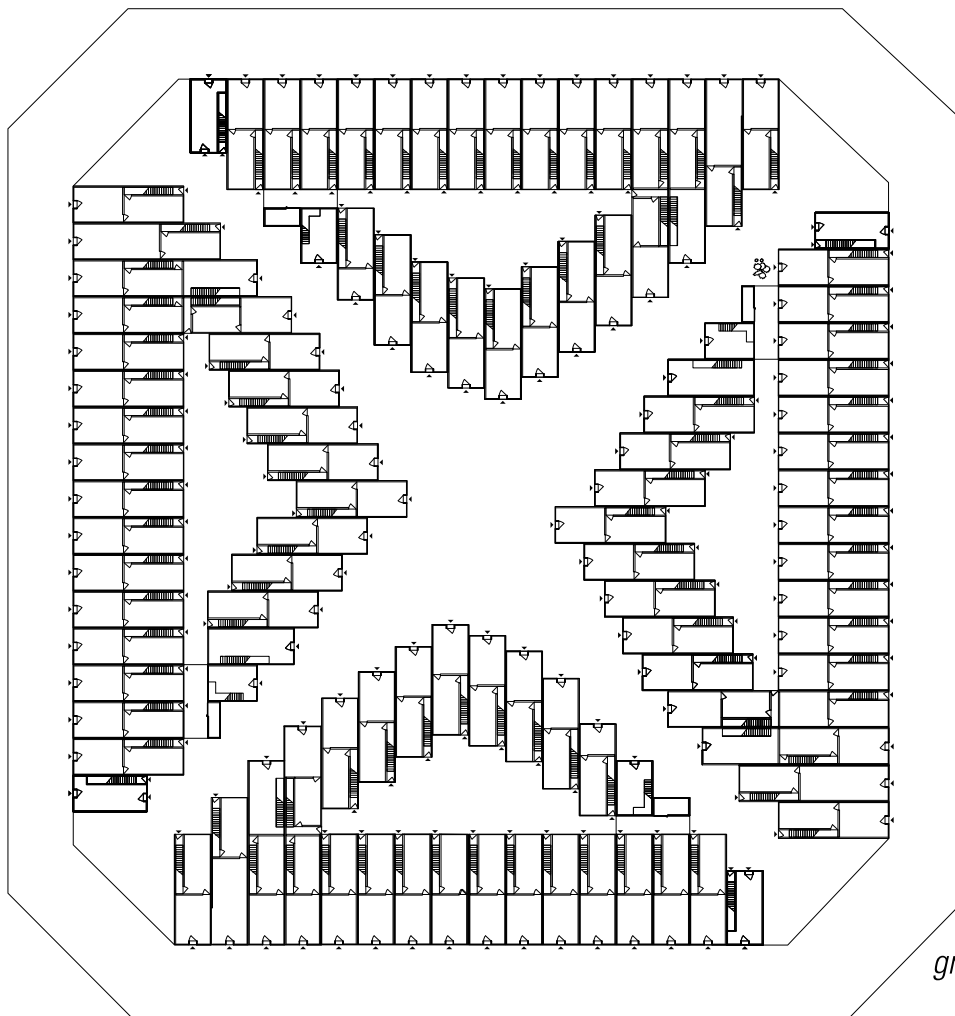
PROF. CARUSO

Ildefons Cerdà's 19th-century expansion plan for Barcelona introduced a grid layout with streets and blocks that promoted air circulation, organized infrastructure, and provided communal courtyards. In a design project, first-year students were tasked with redesigning a specific block in the Poblenou neighborhood, focusing on mixed-use spaces for work and living.

Block 76's layout includes narrow, three-story perimeter houses and multi-level central units in a cross pattern, forming public spaces and private gardens. The ground floor hosts commercial areas, enhancing street activity, while upper floors are used for private residences, accessible via workspaces or garden paths. The central units include larger apartments that maximize vertical space, supporting a balanced neighborhood design that fosters community, privacy, and functionality within Barcelona's urban landscape.

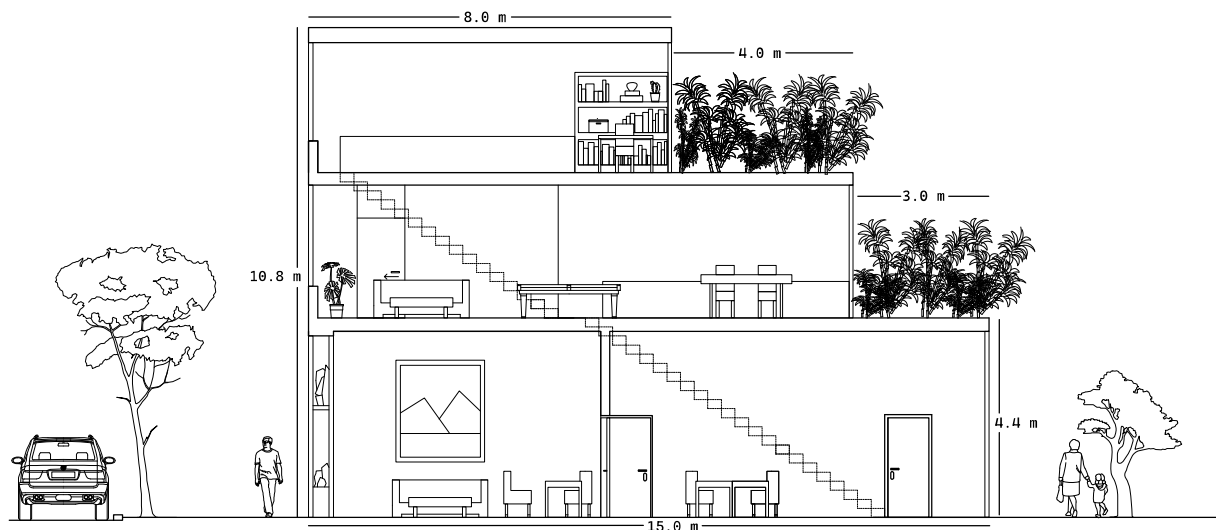


rendering of Block 76

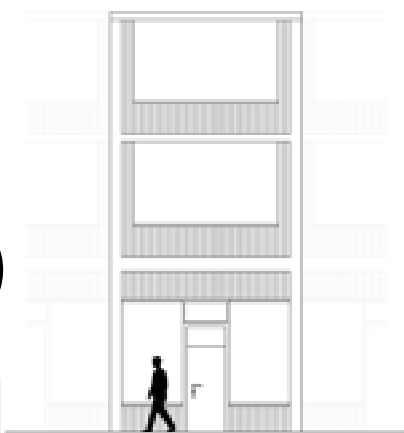


groundfloor of Block 76

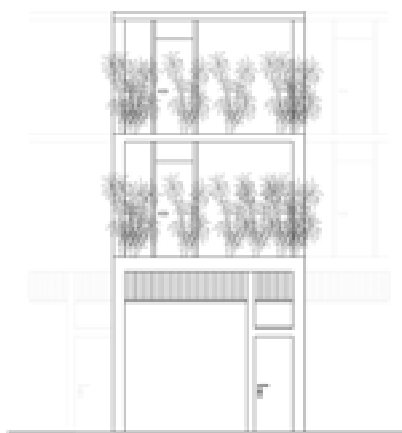
BARCELONA 2022



section perimeter unit



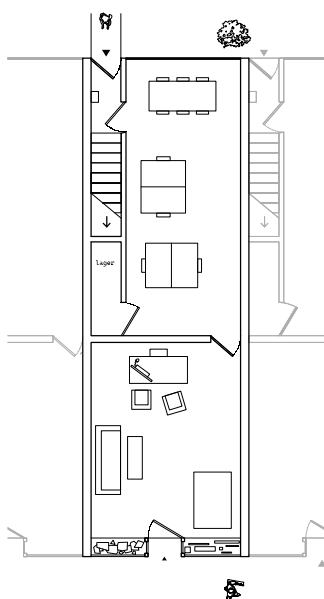
elevation street



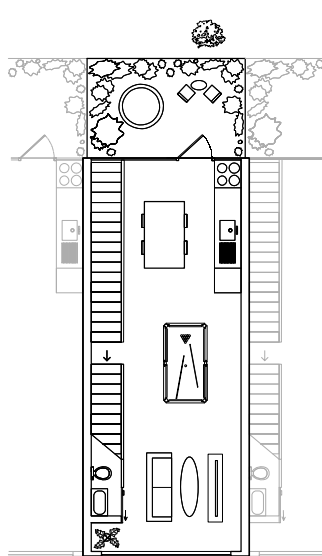
elevation garden



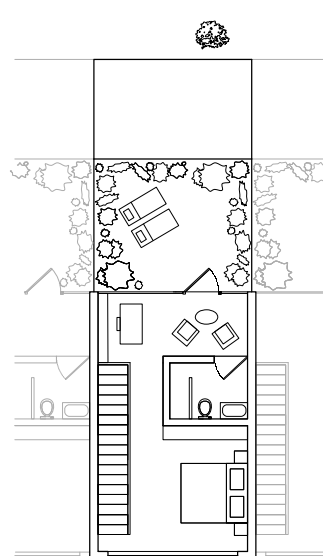
model photography



*plan ground floor
work*



*plan 2nd floor
living*



*plan 3rd floor
living*

On a field trip to Turin, Italy, we examined a social housing complex designed by Umberto Cuzzi in 1927. Traveling to the city's outskirts, we documented the area through photos, sketches, and measurements and spoke with residents to understand the neighborhood's evolution. Our research into Socialist Architecture and Italian Fascism provided insight into the socio-political motivations behind this large housing project and its current role in society.

Originally envisioned as a lively community space with amenities like a pool and kindergarten, the complex has since become a collection of somber apartments, many inherited by families over generations. Our visit underscored the gap between Cuzzi's communal vision and today's reality, highlighting the importance of reviving these spaces to foster community and belonging. Reflecting on Cuzzi's legacy, we saw the value of sustainable, inclusive housing that supports vibrant communities for future generations.

Location:
159 Via Sospello, Turin, Piedmont

In collaboration with
Cendrine Altmann

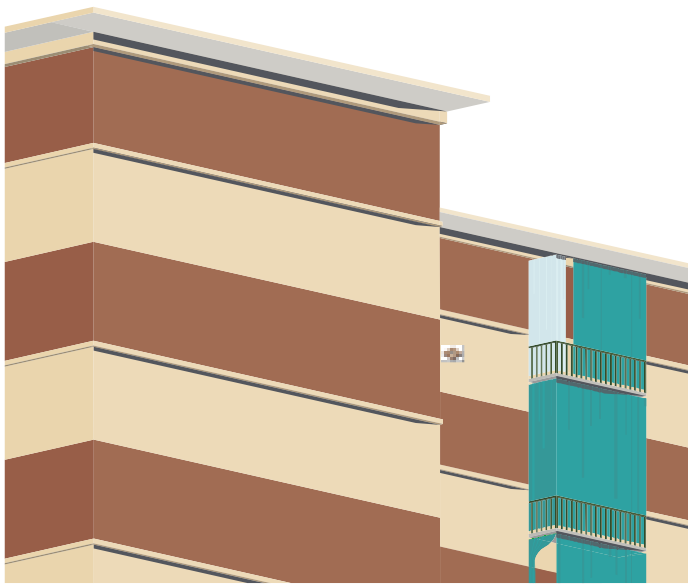


photography



section

TORINO



detail perspective



detail photography



site plan

2022

TORINO

The task given was to create a typology of a certain aspect of architecture, we were assigned to do a facade typology. In a team we compared facades of 37 building scattered across Turin. We redrew, compared and discussed different elements to create three facade typologies.

By segmenting the façade into distinct elements;

A) Profile,

B) Grid,

C) Openings,

we can perceive the building in a new light, free from distractions from other features.

In collaboration with:

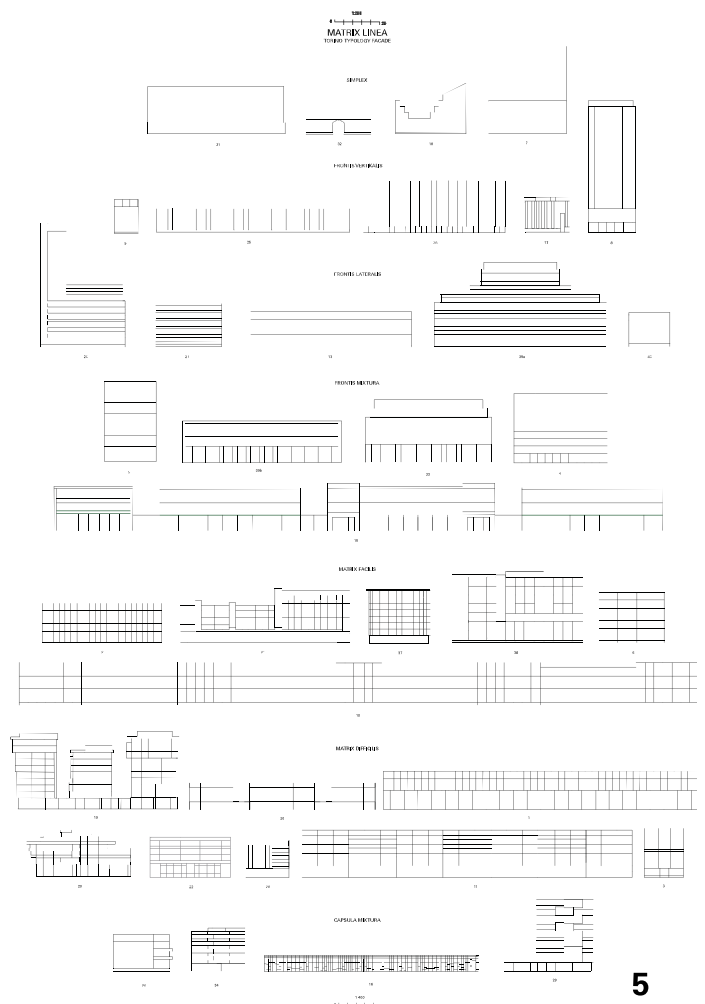
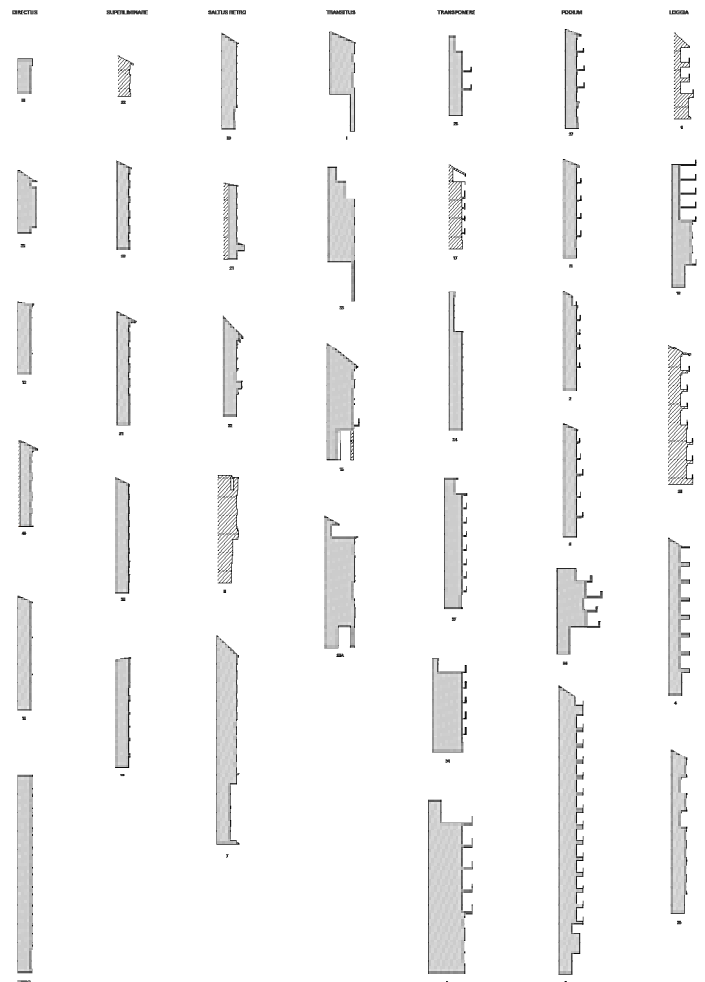
Lilianne Amlinger

Hanna Burgert

Camilla Alves Nunes Köppel

FACIES FRONTRIS

TORINO TYPOLGY FACIES

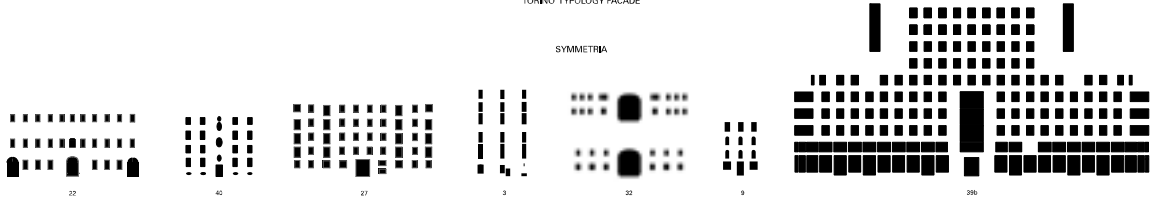


TORINO

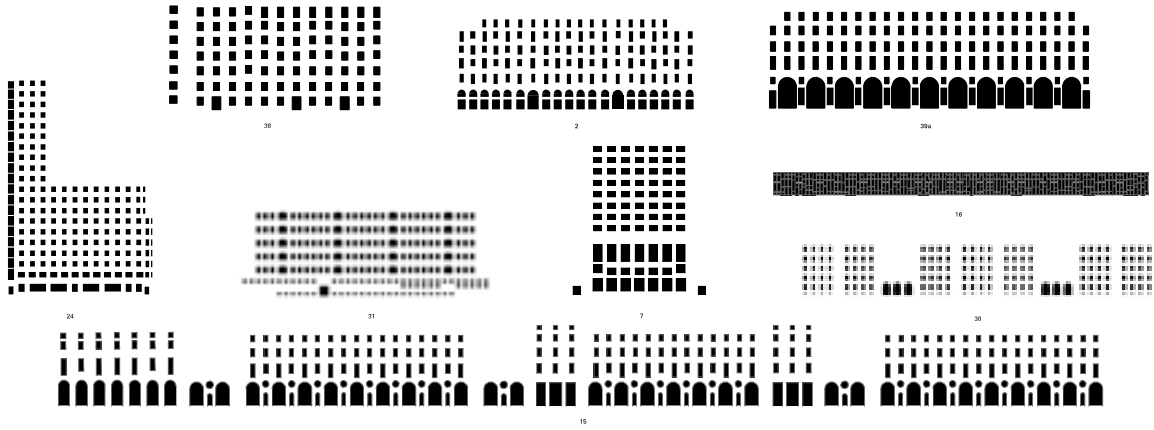
2022

ACTA CAVUM TORINO TYPOLOGY FACADE

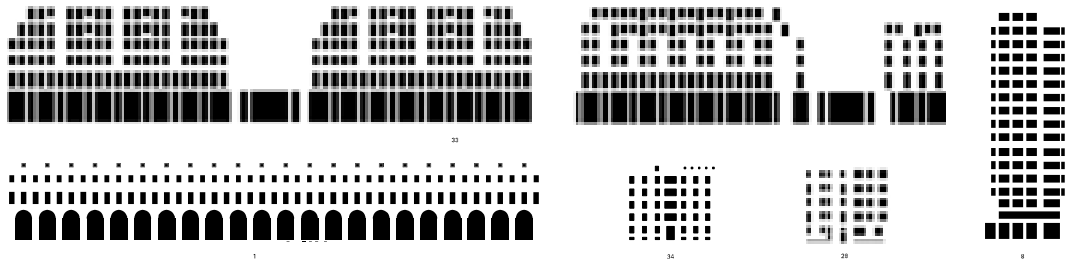
SYMMETRIA



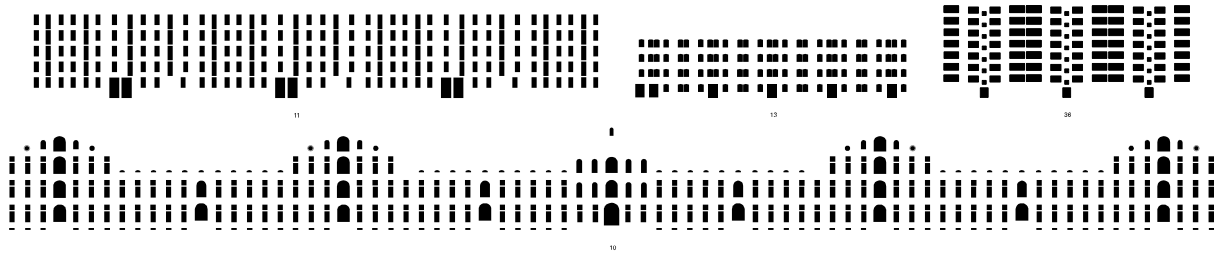
CAMPUS



CRESCERE



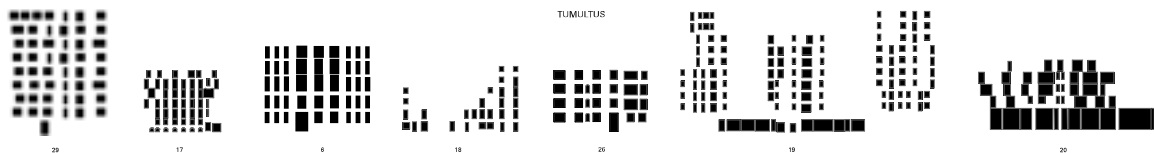
REPETITIO

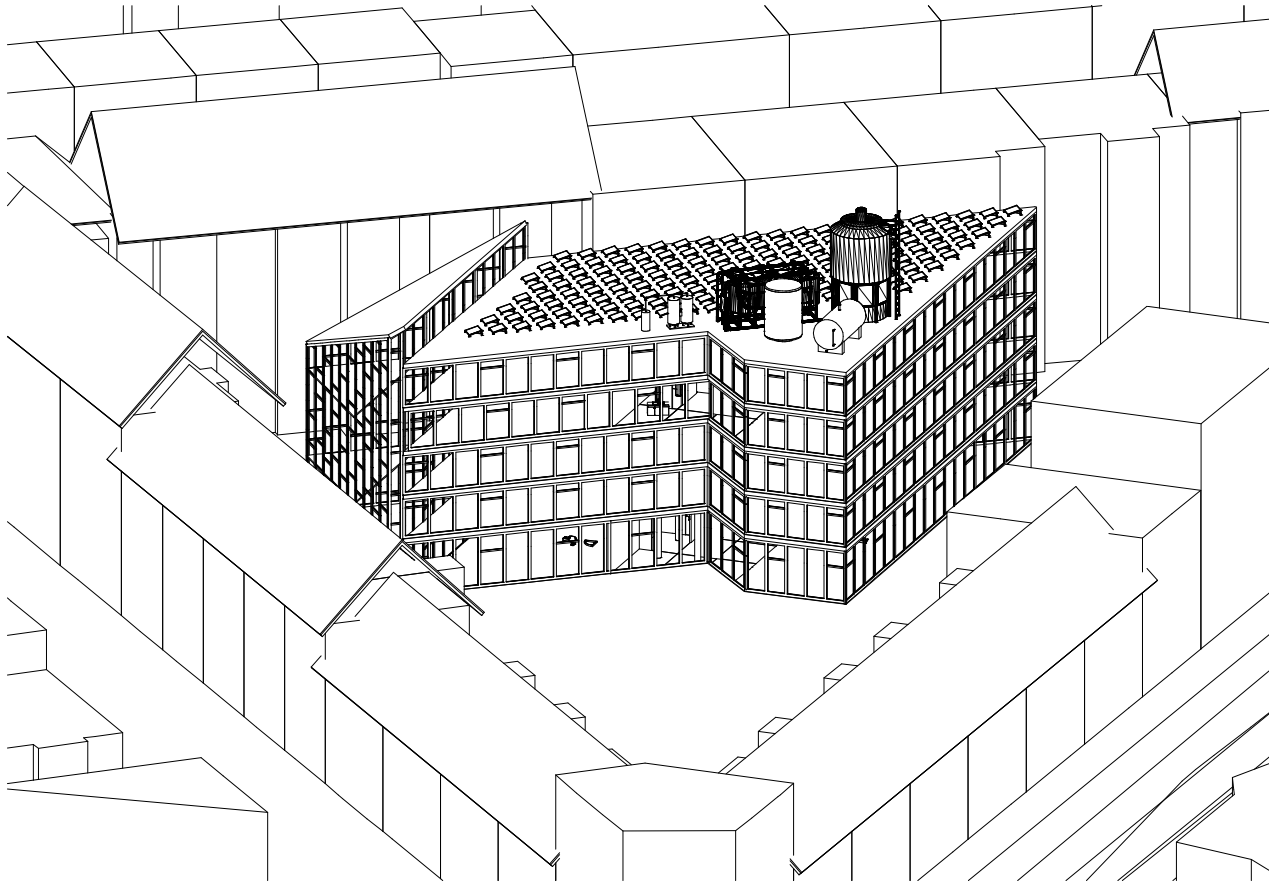


MAGNITUDO DIVERSITAS



TUMULTUS





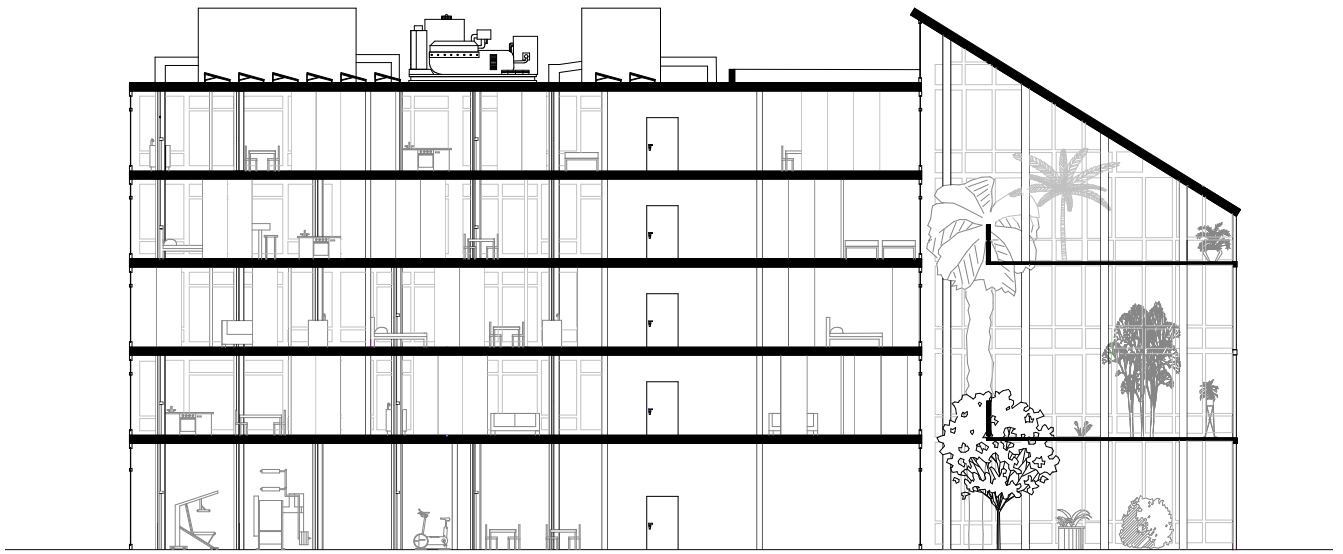
perspective and site

The project reimagined infrastructure in the urban setting of Basel's Volta Garage, preserving the five-story residential buildings and designing a flexible, triangular courtyard building. Supported by a grid of concrete columns, some of which provide utilities, residents can freely arrange their kitchens, living rooms, and bedrooms. Apartments range from 50 to 130 square meters, with wooden sliding doors enabling flexible room configurations of at least 12 square meters.

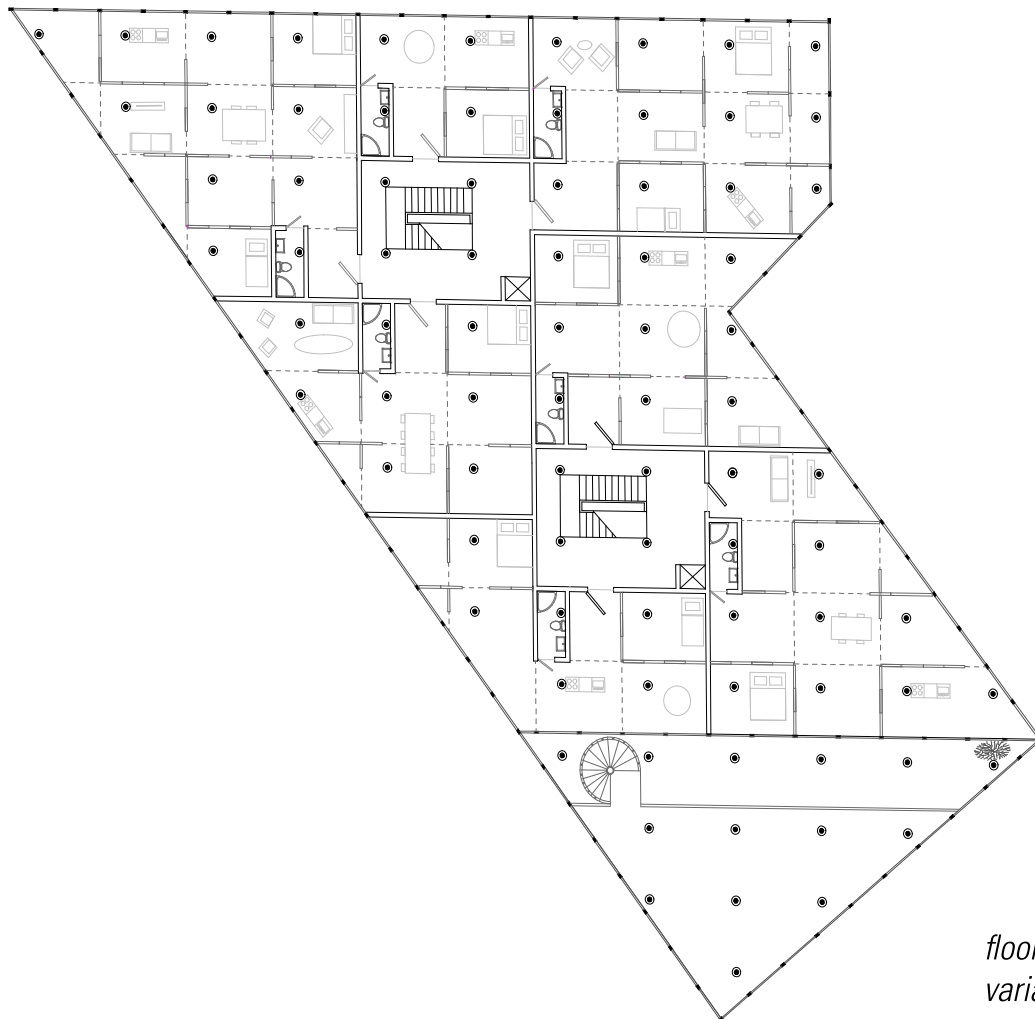
Key features include a communal ground floor with a gym, party room, atelier, kindergarten, and a greenhouse with rainwater harvesting. Photovoltaic panels contribute to sustainability. This design prioritizes adaptable, community-oriented living spaces that redefine „home“ through functional infrastructure and resident engagement.

In collaboration with Hanna Burgert.

B
A
S
E
L



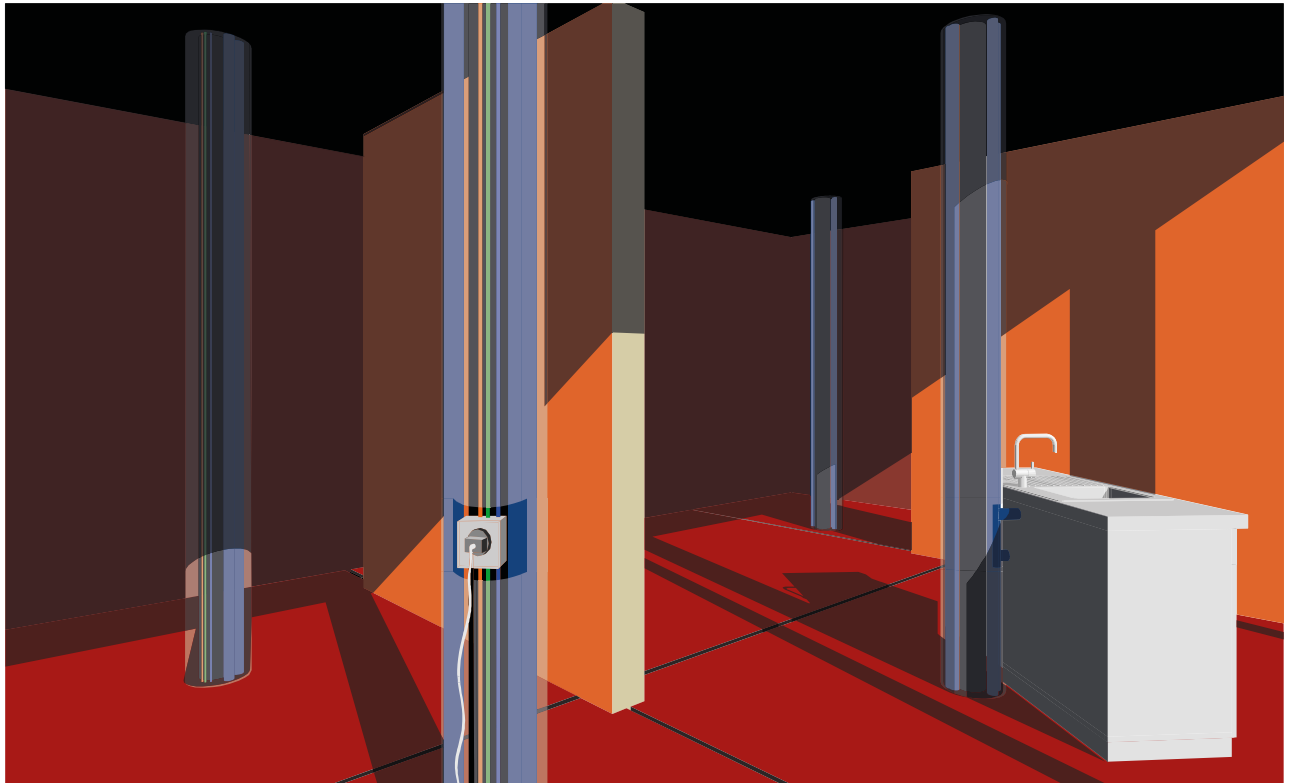
section plan



*floorplan with
variantions possible*

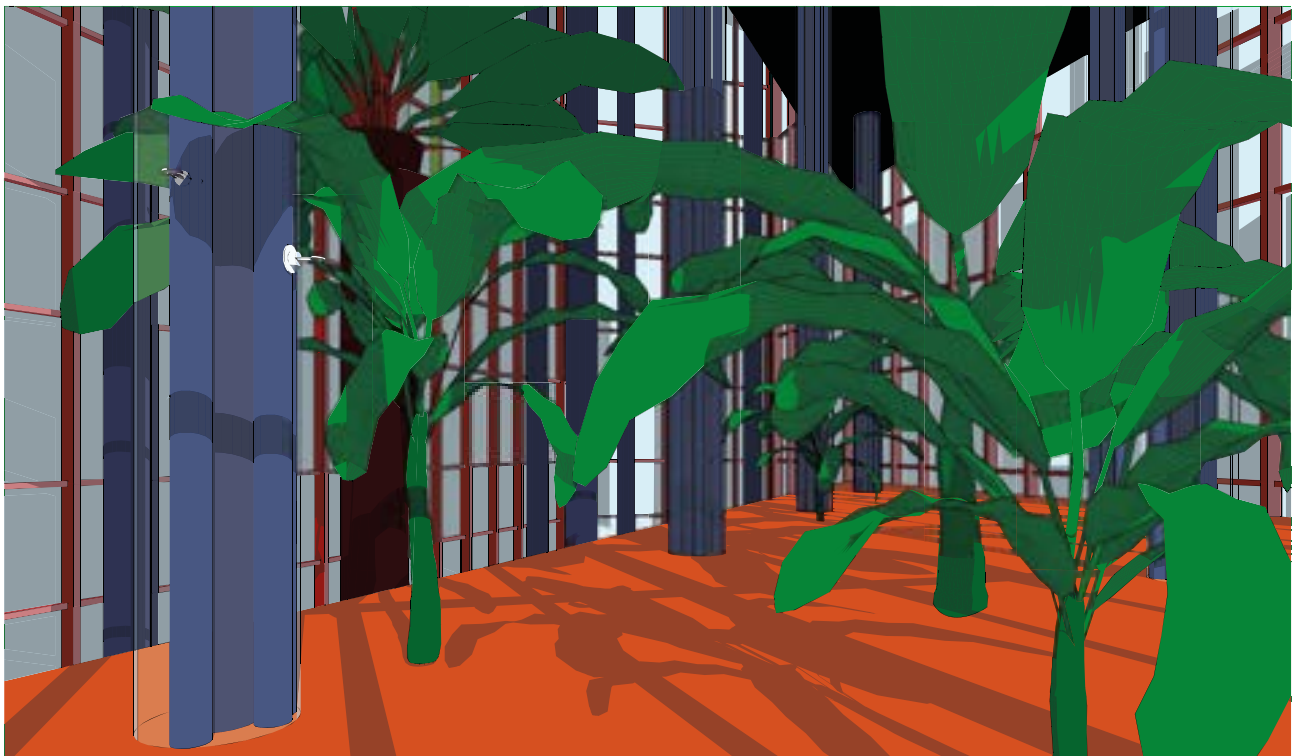
2
0
2
2

B
A
S
E
L



perspective inside

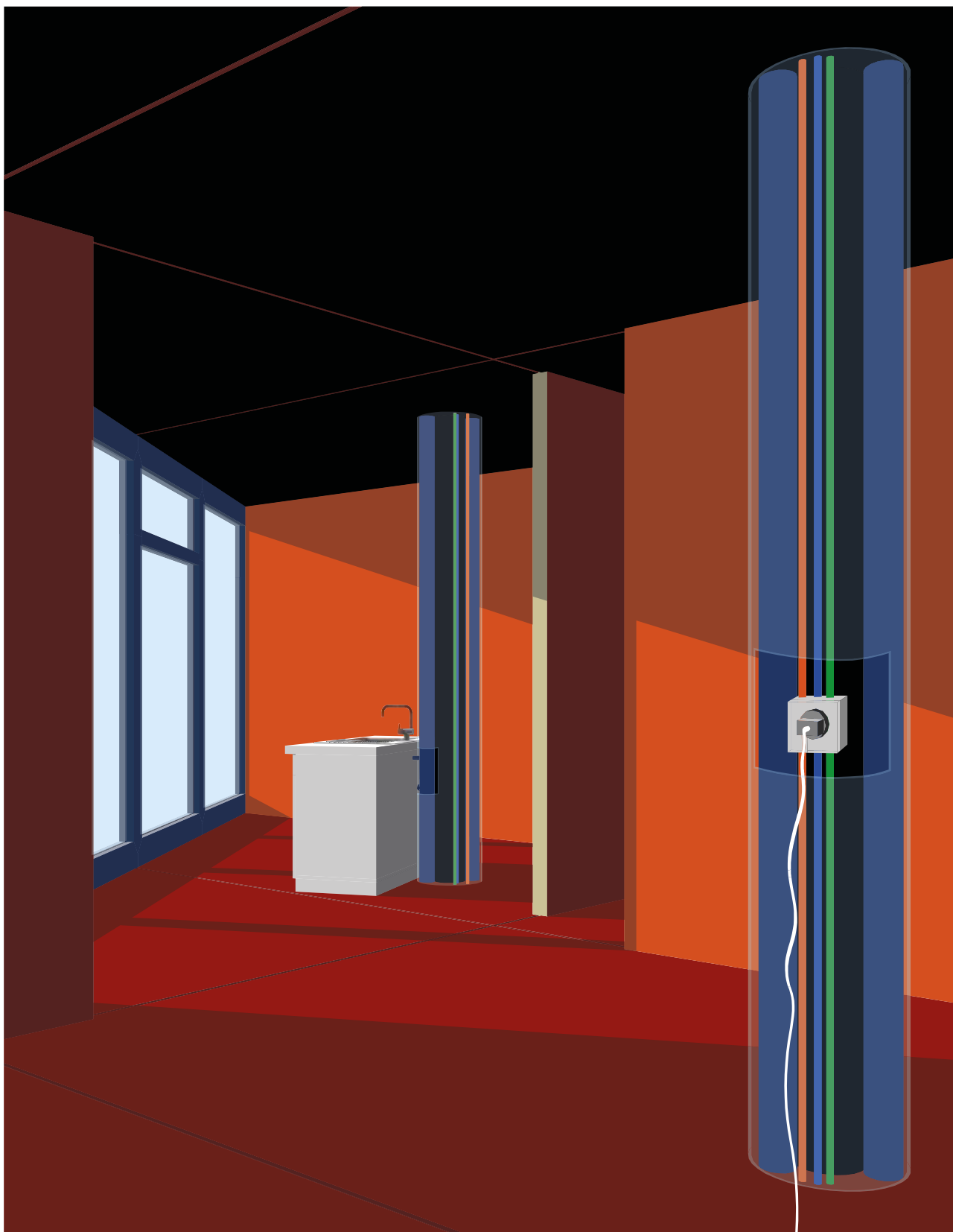
2
0
2
2



perspective greenhouse

B
A
S
E
L

2
0
2
2



perspective looking outside

ZÜRICH

The tradition of collecting objects stems from a human impulse to document time with tangible items. While museums are known for their public exhibitions, their behind-the-scenes roles of curation, preservation, and research often go unseen. At the Museum Rietberg in Zürich, Switzerland's only art museum dedicated to non-European cultures, a new interactive office exhibition has been designed to bring these activities to light.

Focusing on a 200m² underground space and rooms in the Villa WeSENDONCK, the exhibit draws inspiration from Group Material's „Democracy: Education“ to support Provenance Research and the Benin Initiative, involving visitors in the study of colonial-era artifacts. The space offers varied engagement levels—from school workshops to professional research—and includes exhibition shelves, private workspaces, and discussion areas. „Contact tables“ in the Villa enable hands-on interaction with objects during workshops.

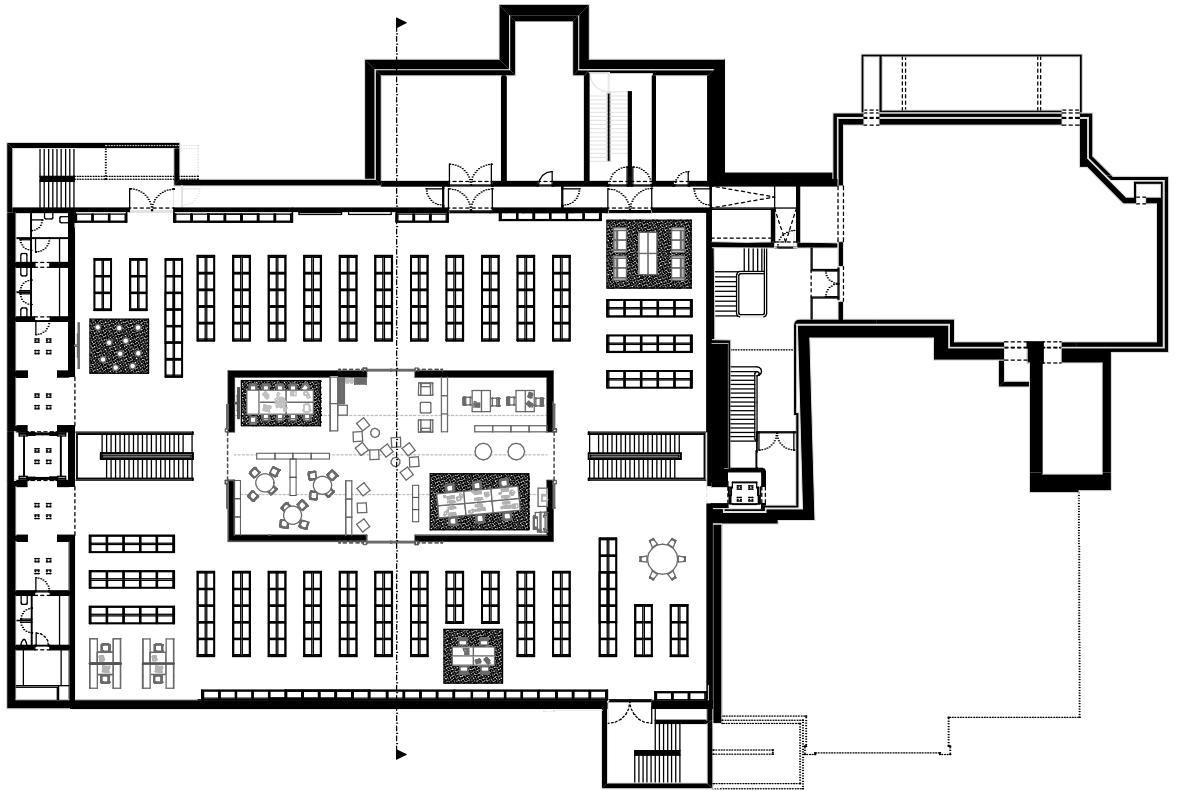
This evolving installation aims to foster dialogue on museums' societal roles, enhancing public access and appreciation of cultural heritage through active participation.

In collaboration with Camilla Alves Nunes Köppel

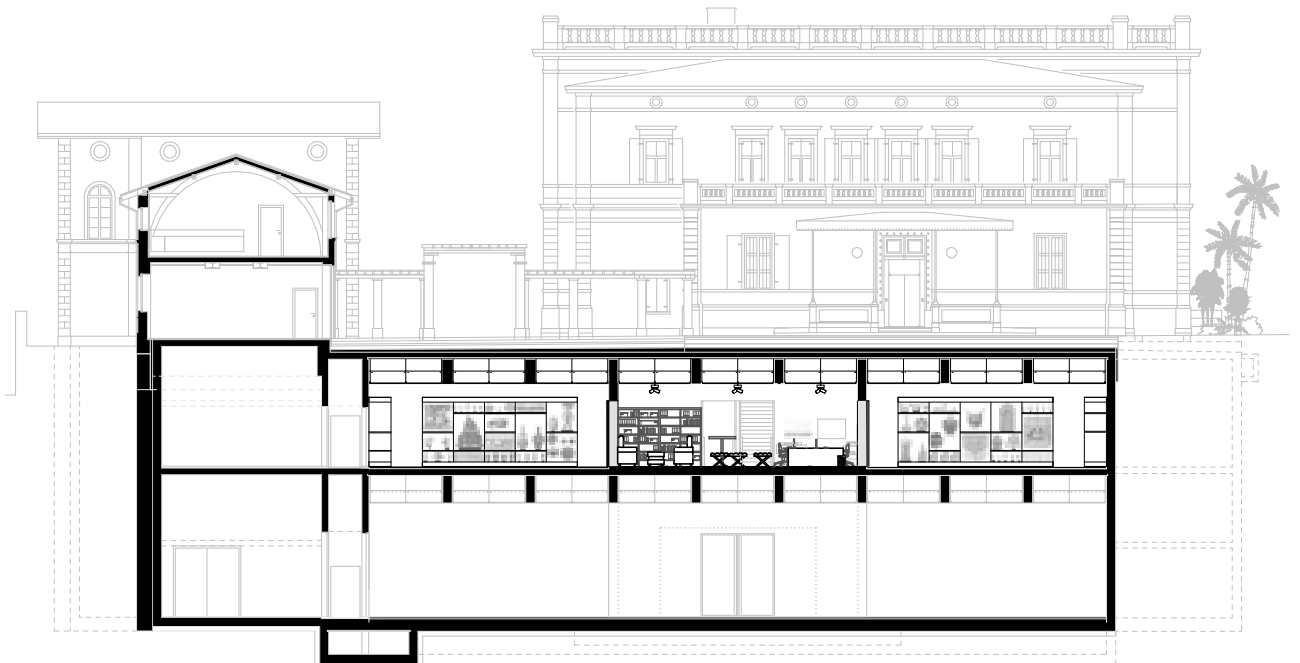


model photography

Z
U
R
I
C
H



plan first basement floor



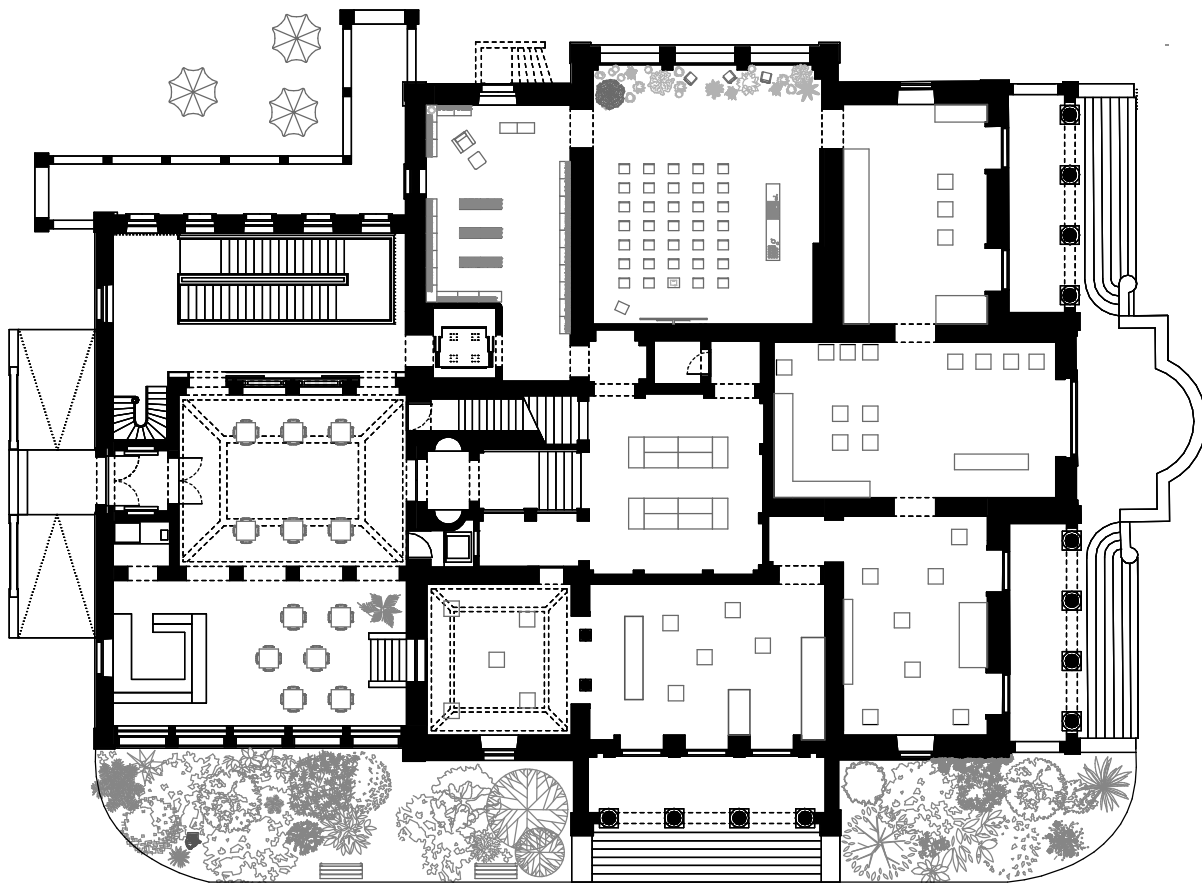
section plan



section plan detail

2
0
2
3

Z
U
R
I
C
H



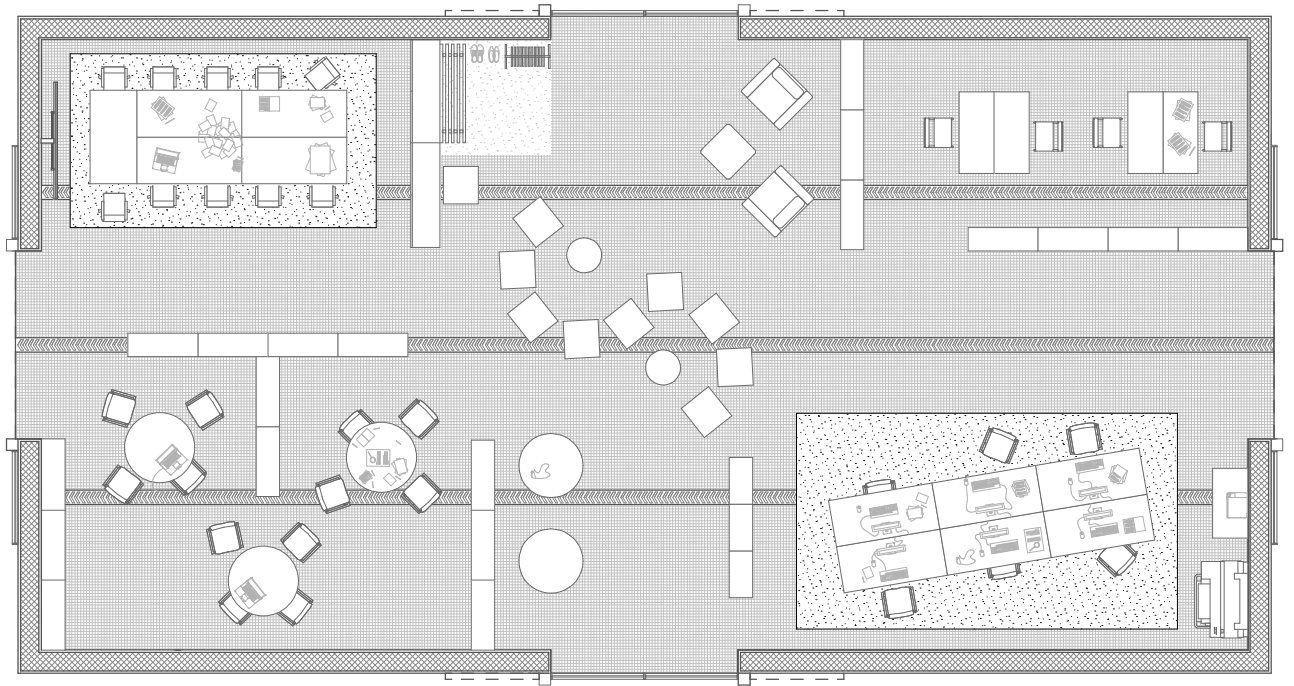
villa wesendonck floor plan

2
0
2
3



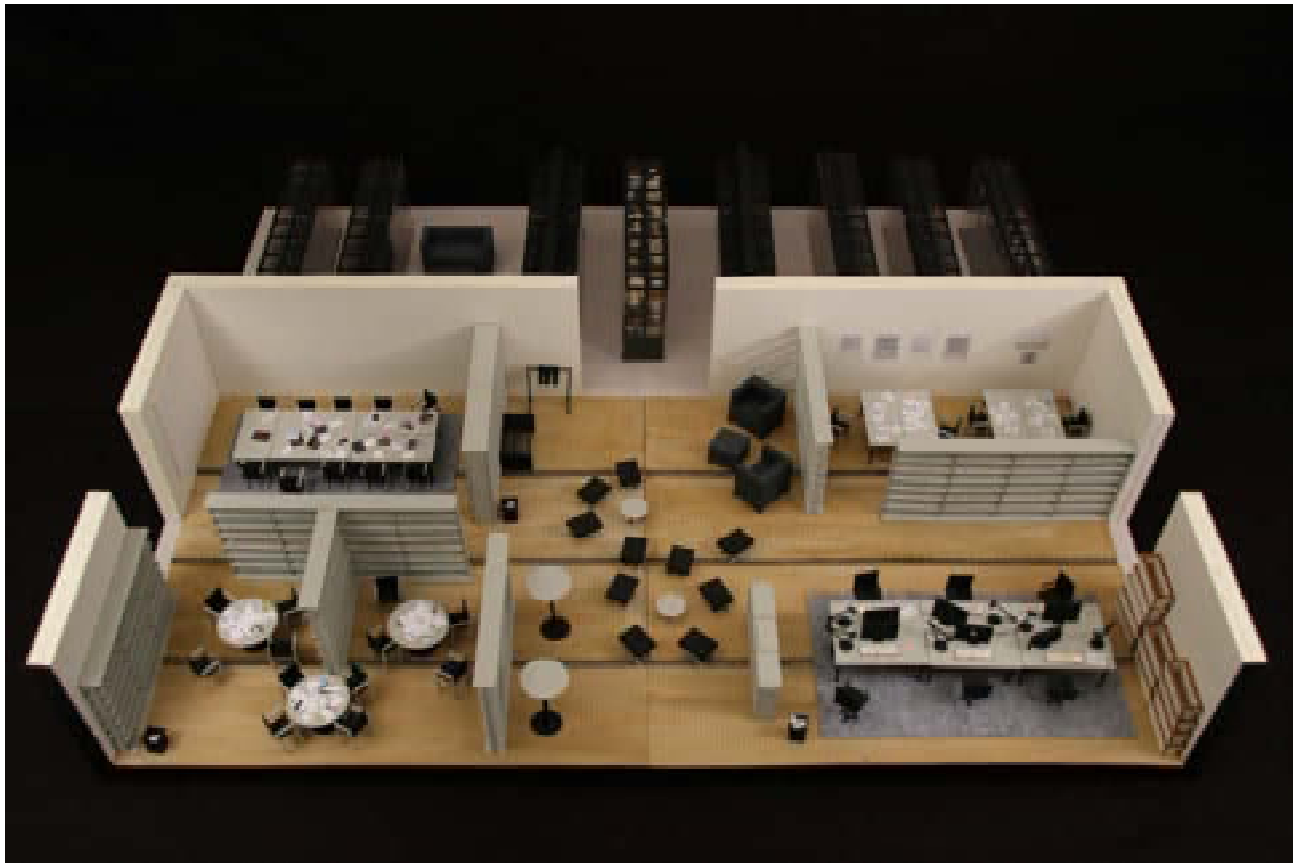
villa wesendonck perspective

Z
U
R
I
C
H



office installation floor plan

2
0
2
3



model photography

plein-air sketches

