

SPEC SHEET + MEASUREMENTS

District® Women's Perfect Tri® Long Sleeve Tunic Tee. DT132L

Product photo



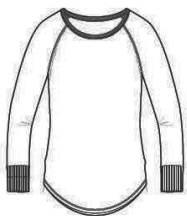
Long sleeve tunic version of our lightweight and soft crew.

- 4.5-ounce (153 GSM)
- 50/25/25 polyester/combed ring spun cotton/rayon, 32 singles
- Raw edge detail at armholes
- Coverstitch details
- 1x1 rib knit neck
- Tear-away label
- Rib knit elongated cuffs
- Longer tunic length
- Curved hem

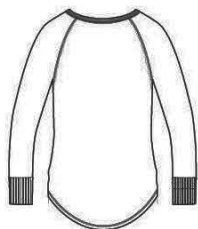
CARE INSTRUCTIONS

Machine wash cold, with like colors. Only non-chlorine bleach. Tumble dry low. Warm iron if necessary.

Sketches



front



back

SPEC SHEET + MEASUREMENTS

District® Women's Perfect Tri® Long Sleeve Tunic Tee. DT132L

PRODUCT MEASUREMENTS

	XS	S	M	L	XL	XXL	3XL	4XL
Body Length at Back	29	29 1/2	30	30 1/2	31	31 1/2	32	32 1/2
Bust	17	18	19	20 1/2	22	23 1/2	25 1/2	27 1/2
Sleeve Length	29 3/4	30 1/4	30 3/4	31 3/8	32	32 5/8	33	33 3/8

Body Length at Back: Measured from high point shoulder to finished hem at back.

Bust: Measured across the chest one inch below armhole when laid flat.

Sleeve Length: Start at center of neck and measure down shoulder, down sleeve to hem.

SIZE CHARTS

	XS	S	M	L	XL	XXL	3XL	4XL
Bust	32-34	35-36	37-38	39-41	42-44	45-47	48-51	52-55
Size	2	4/6	8/10	12/14	16/18	20/22	24/26	28/30